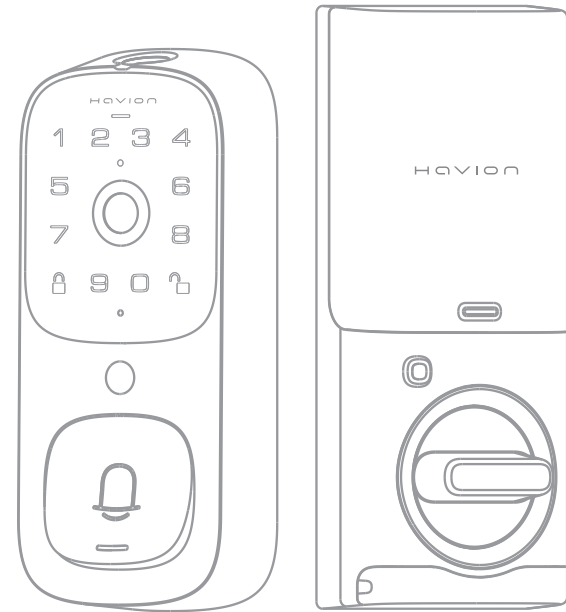


HAVION

H



Havion Battery Doorbell+Lock 3-in-1

QUICK START GUIDE

— K02 —



► Contents

P1–P4

Hardware introduction

P5–P6

Parts list

P7–P17

Installation overview

P18–P21

Programming Instructions

P22

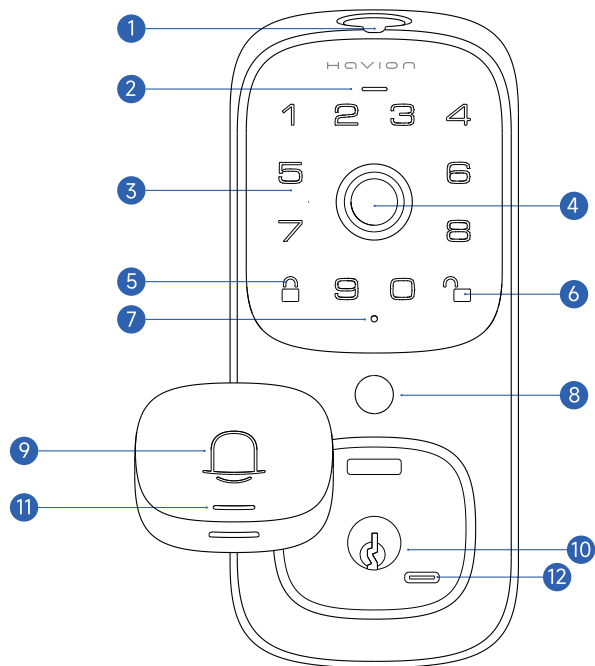
Using the App

P23–P24

Video Guide

► Overview

Model: K02



1 Fingerprint Scanner : Use to unlock the door.

2 Status Light :

- **Green** : Succeed(Door unlocked)
- **Red** : Abnormal status detected

3 Touch Keypad

4 High-Definition Camera

5 Lock Button

6 Unlock Button

7 Microphone

8 Motion Sensor

9 Doorbell Button

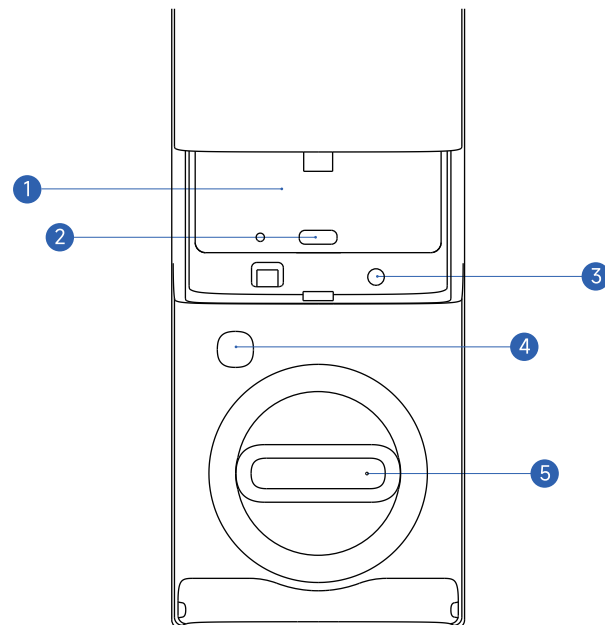
10 Lock Cylinder

11 Doorbell Light : The ring light automatically turns on when someone approaches the door.

12 USB-C Port : Charges the lock in emergency situations. To stop lock tampering, this port is solely for charging purposes and can not transfer any data.

► Blackview Security Video Smart Lock

Model: K02



1 Rechargeable Lithium Battery

2 Charging Port

3 Setting Button

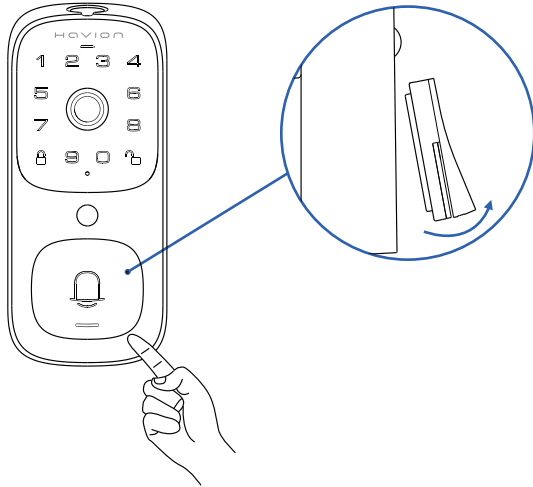
4 Lock & Unlock Button

5 Manual Lock/Unlock Knob

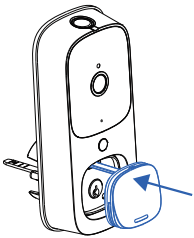
► How To Open /Close Lock Cylinder Cover

Guide of how to remove the doorbell button.

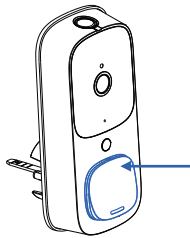
Remove:



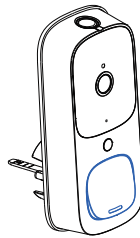
Put it back:



Align the doorbell button module with its original position and gently place it back in a vertical position.



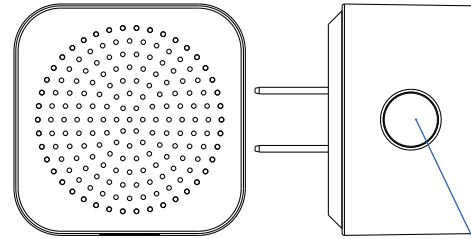
Press lightly with your thumb at the arrow location to push the upper end of the doorbell button module in.



Press the doorbell button to confirm if it has been installed properly.

► Doorbell Chime*

Model: K02

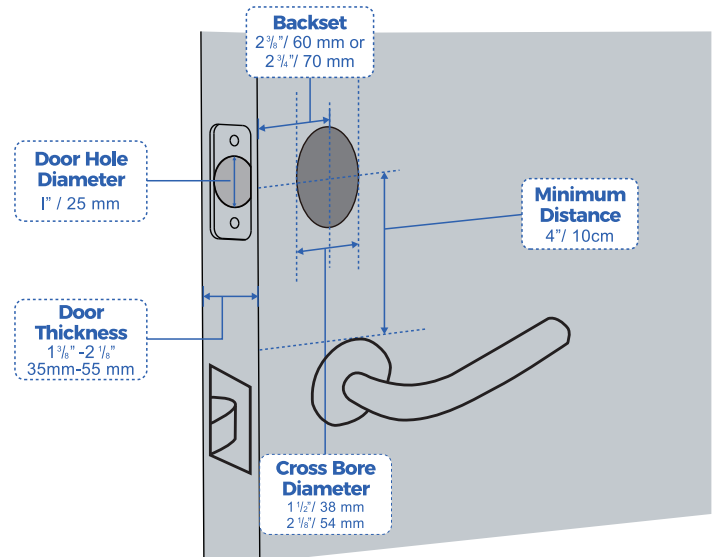


1 **Doorbell Volume Setting Button**

Chime accessory pairing guide:

1. Click to adjust the volume.
2. Double-click to change the ringtone.
3. Press and hold for 10 seconds to enter the pairing mode.

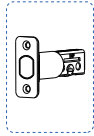
► Compatible Doors



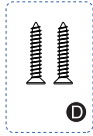
► Installing Video Smart Lock

Parts List

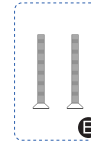
Step 1. Install Deadbolt



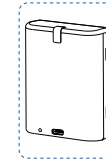
Latch



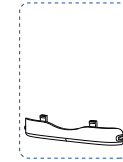
Strike Screws
(x2) 25mm



Mounting plate
Screws (x2) 30 mm

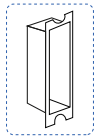


Battery

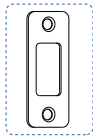


Screws cover

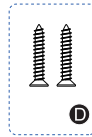
Step 2. Install Strike Plate



Strike Box



Strike Plate



Strike Screws
(x2) 25mm

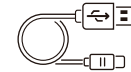
Other



Chime

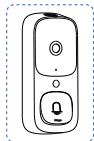


Keys (x2)

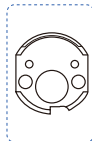


Charging cable for battery

Step 3. Install Exterior Assembly



Exterior Assemble

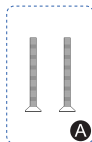


38mm spacer

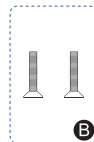
Step 4. Install Interior Assembly



Interior Assemble



Mounting plate
Screws (x2) 40 mm



Interior Assembly
Screws (x2) 25 mm



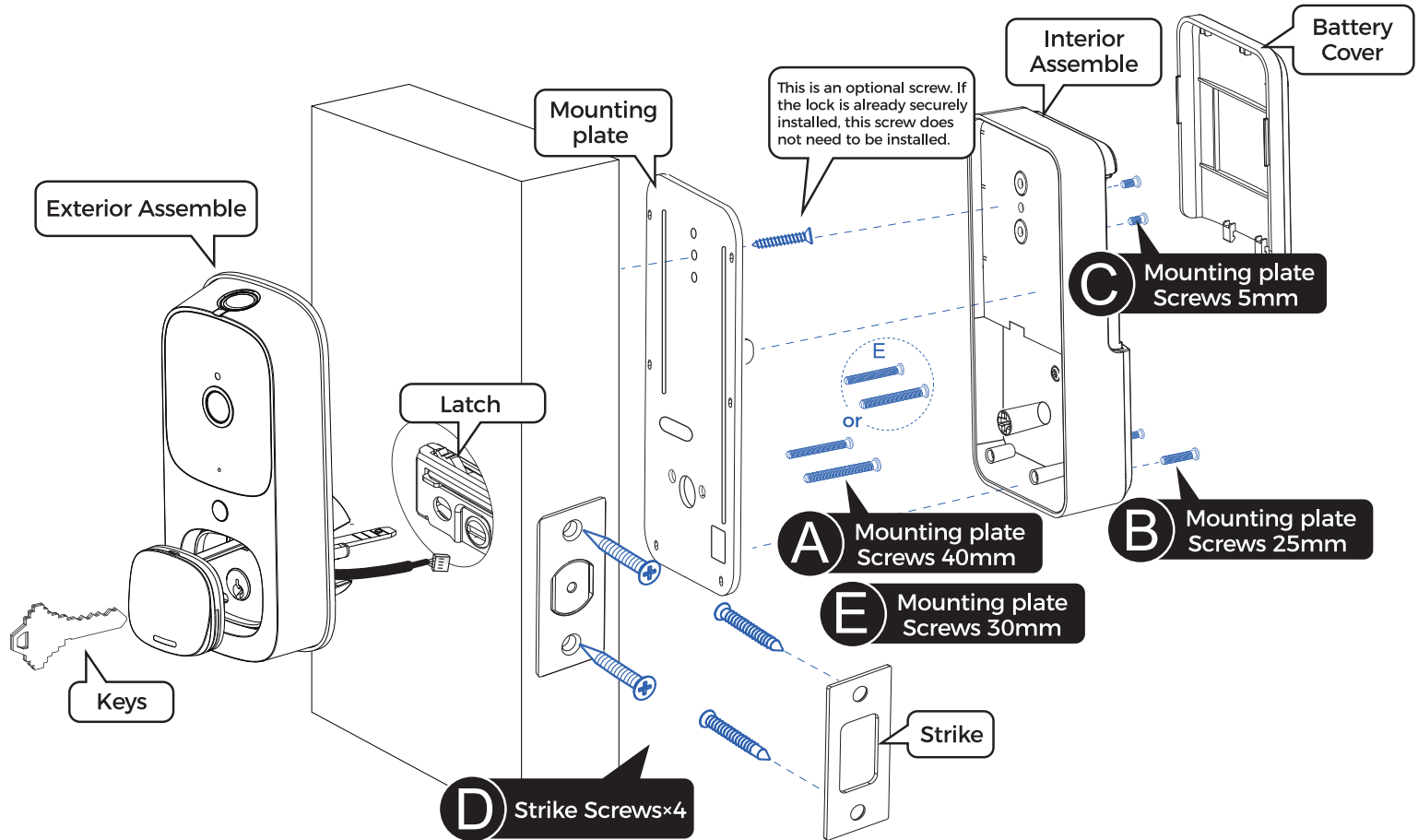
Interior Assembly
Screws (x2) 5 mm

Installation Video



Go to <https://www.havion.com> to watch the installation video.
If any questions, please email to Service@havion.com
or call US: +1(888) 241-0666

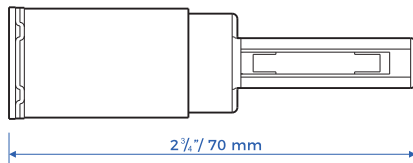
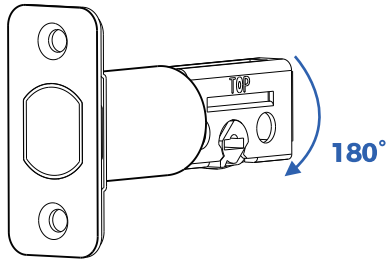
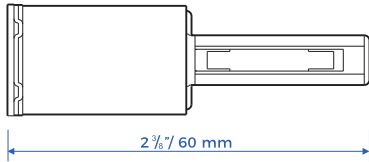
► Installation Overview



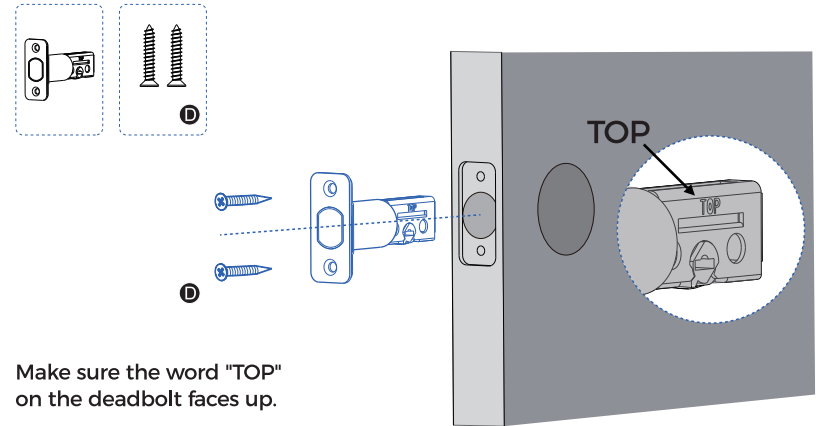
► Step 1. Install Deadbolt

1. Check your door to see if the deadbolt requires adjustment.

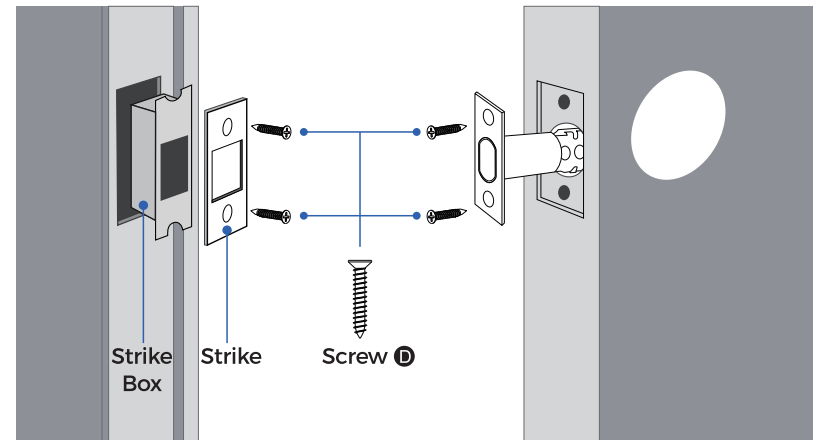
If the backset is 70mm, turn the faceplate 180° to extend the length.



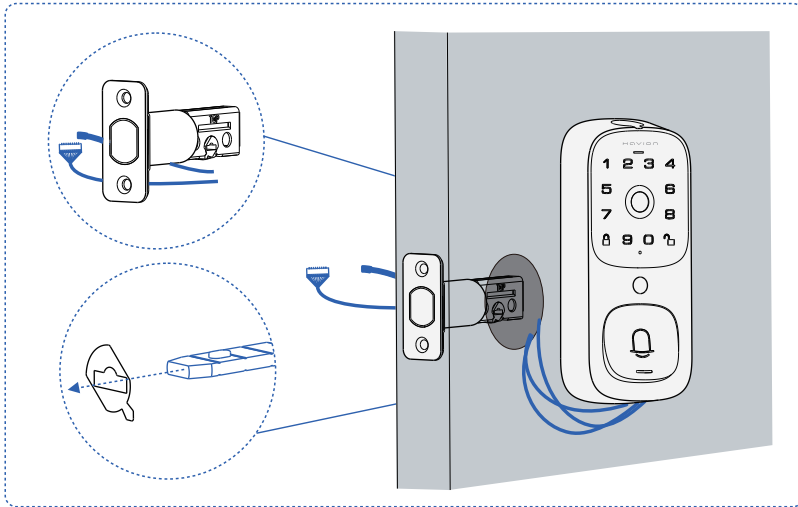
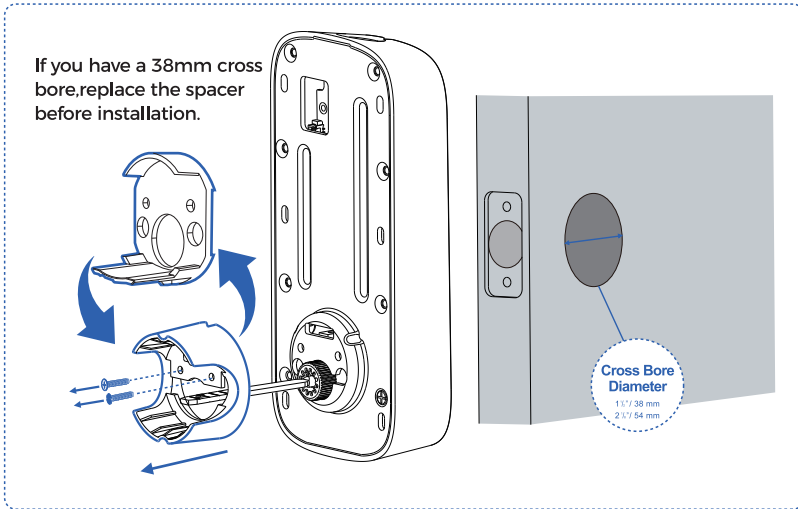
2. Insert and screw the deadbolt into the doorframe.



► Step 2. Install Strike Plate

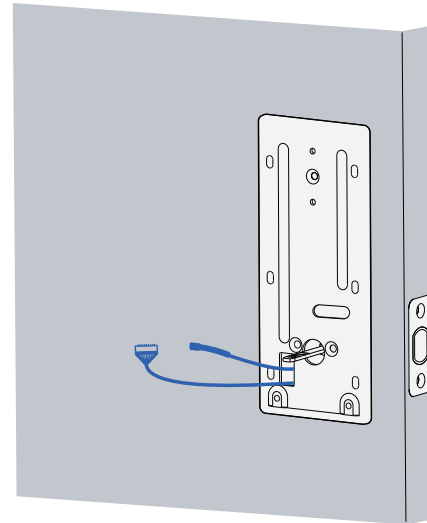
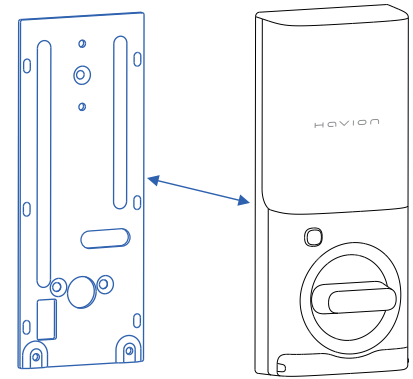


► Step 3. Install Exterior Assembly



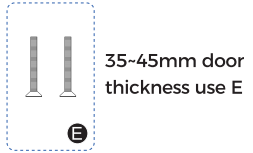
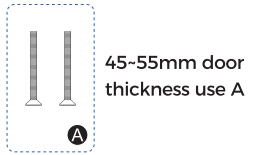
► Step 4. Install Interior Assembly

1. Detach the back cover from the interior assembly.

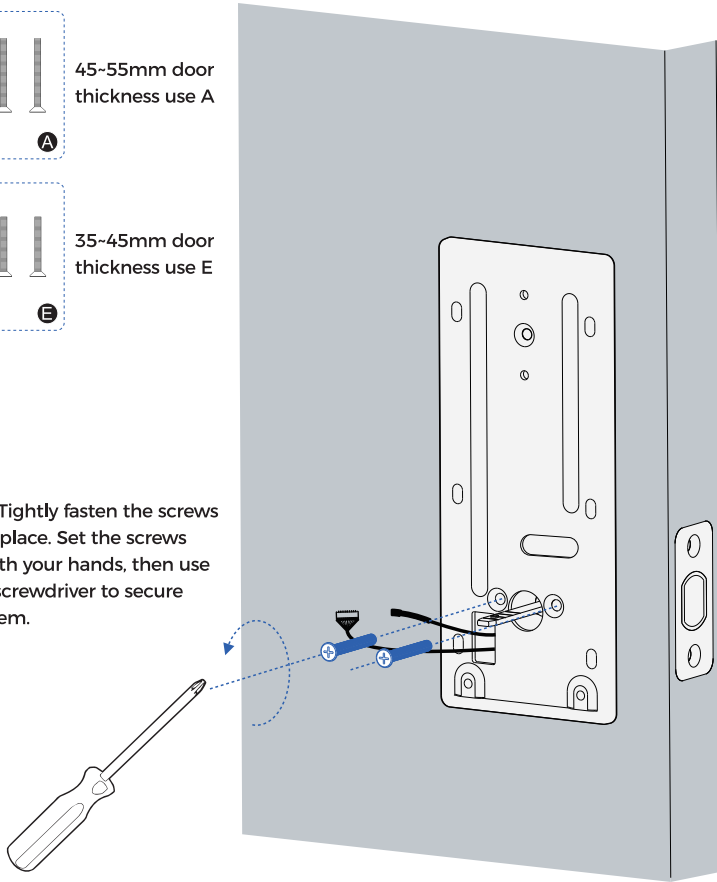


2. Run the wires through the back cover.

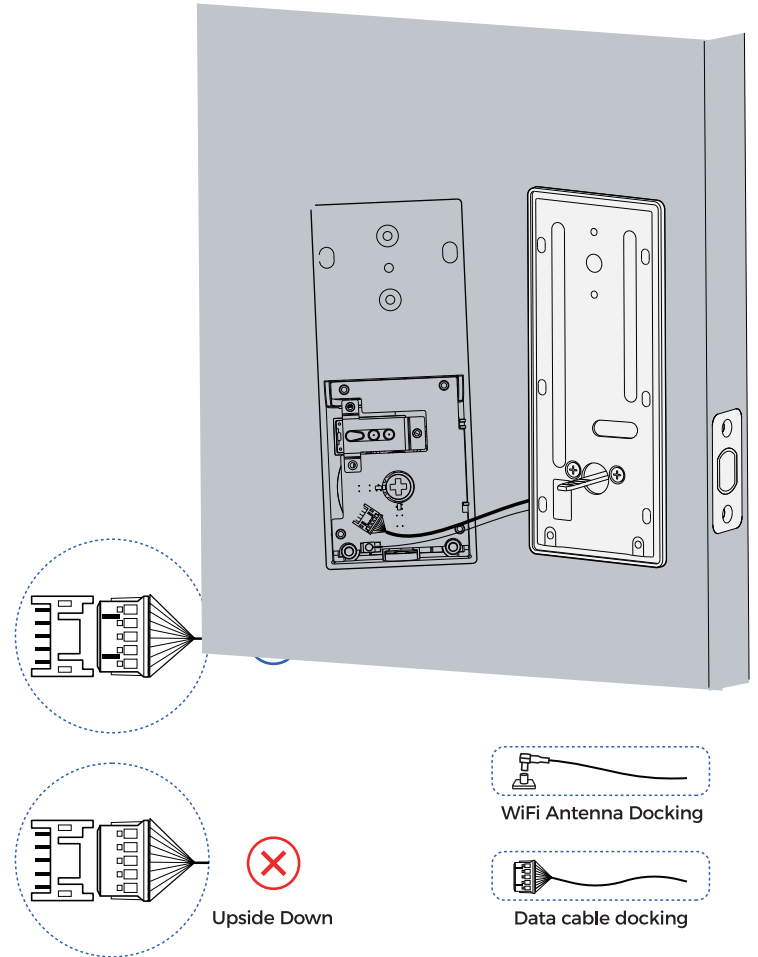
3. Secure the back cover with screws.



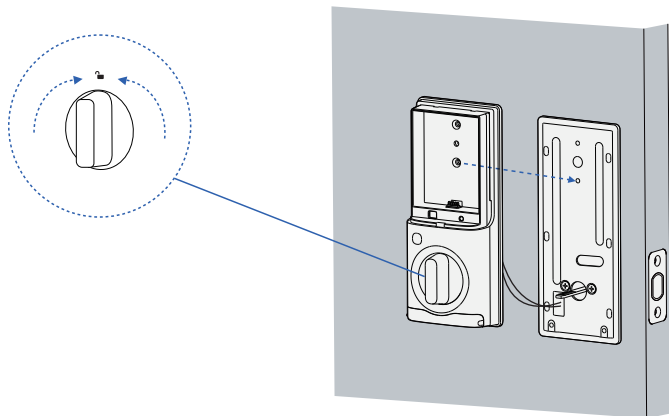
4. Tightly fasten the screws in place. Set the screws with your hands, then use a screwdriver to secure them.



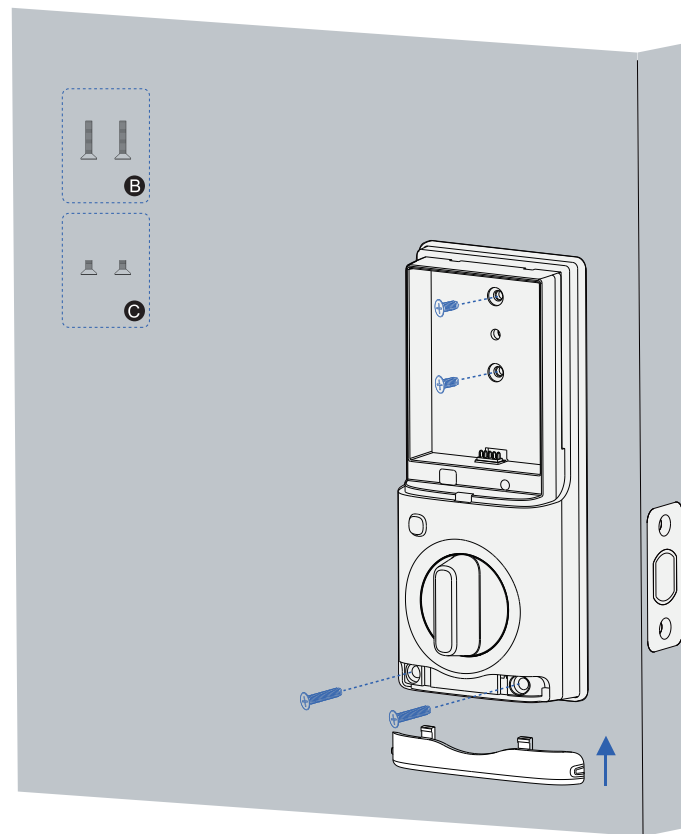
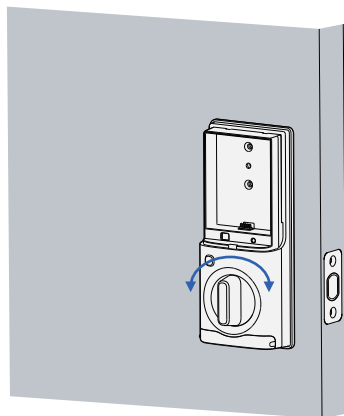
5. Wire to the interior assembly.



6. Mount the interior assembly. Make sure both wires are tucked into the cabin on the back of the interior assembly.



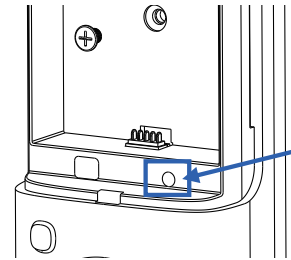
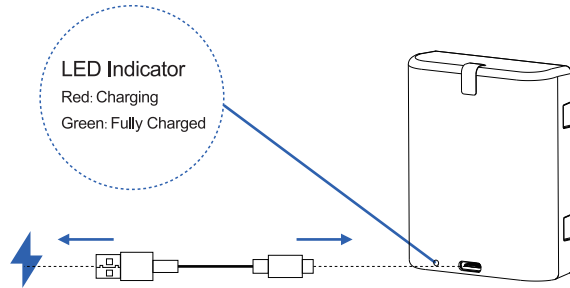
7. Check if the deadbolt retracts by turning the thumbturn.



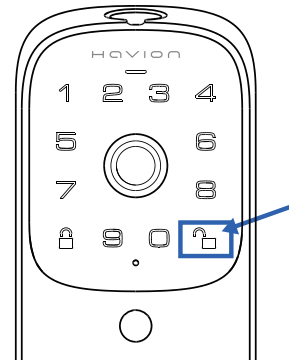
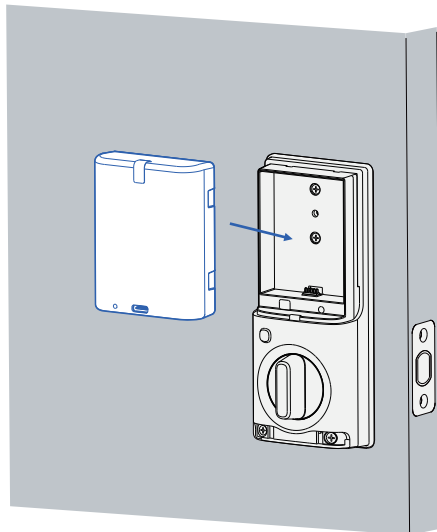
► Programming instructions

NOTE: You can also set up your lock directly in the Blackview Security App. The following steps are listed to help you complete the basic setup without a smartphone

8. Fully charge the battery before first use. It might take about 6 hours.



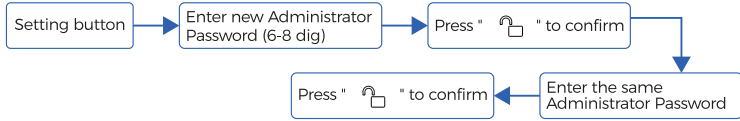
Setting Button: Press and enter administrator password to enter Setting Mode.



Unlock Button: Use as confirm button.

4. Setting Mode Function List

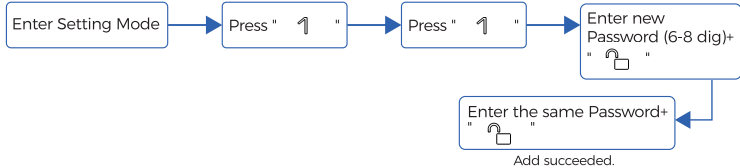
Add administrator Password



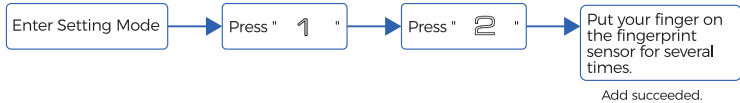
Enter Setting Mode



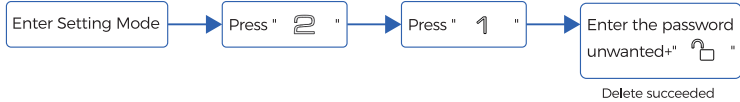
Add Password



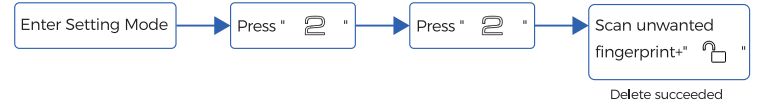
Add Fingerprint



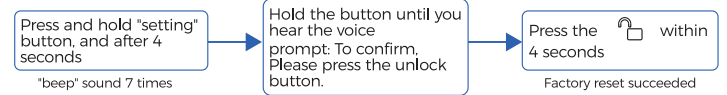
Delete Password



Delete Fingerprint



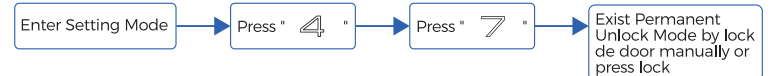
Restore Factory Settings



Vocation Mode



Permanent Unlock Mode



Automatic Detection Of Unlocking Direction



NOTE:This step only use to re-detect the opening direction. when reversed.

5. Vacation Mode

When you need to go on vacation for an extended period, you can set the door lock to vacation mode. In this mode, the door lock will disable some functions and reduce response speed to minimize power consumption and prevent the battery from draining during long periods of inactivity.

Exiting Vacation Mode:

While in vacation mode, the touch keypad will no longer be activated by touch. To exit vacation mode and activate the touch keypad, you need to press and hold the “Unlock” button for 5 seconds.

Enter Path: Setting Mode → Press [4] → Press [4]

6. Automatic Detection Of Unlocking Direction

When you find that the actions of the lock button and unlock button are opposite to the actual door lock operation (meaning that pressing the lock button performs the unlock action), this is usually due to the door lock incorrectly determining the direction of opening. You can use this function to re-detect the opening direction and restore normal operation to the door lock.

Enter Path: Setting Mode → Press [4] → Press [6]

7. Permanent Unlock Mode

Once the Permanent unlock mode is activated, the door lock will no longer automatically lock until it is manually locked or the lock button is pressed to lock it.

Note: When manually locking or pressing the lock button to lock, the system will automatically exit the constant unlock mode.

Enter Path: Setting Mode → Press [4] → Press [7]

► Download Havion App



Download the app to discover all K02 functions
If any questions, please email to Service@havion.com
or call US: +1(888) 241-0666



Guide to connecting
devices to WIFI

► Video Guide

Scan the QR code to watch the video instruction on how to perform the operation.

Program the Lock Video



K02 deadbolt lock
Installation Guide



Guide to connecting
devices to WIFI



Factory reset



emergency Power
supply



Motion sensor setup



Installation and usage
instructions for
Ding-dong machine



passcode set up



Fingerprint addition
setup



Volume control



Alexa setup and usage
demonstration



Vacation mode set up



Remote monitoring



Constantly open mode
set up



delete fingerprint and
passcode



auto lock setting
set up



Access log query and
deletion



Remote doorbell
unlocking



Door Knob Installation
Video

NOTICE

Warning

replacement of a battery with an incorrect type that can defeat a safeguard;
disposal of a battery into fire or a hot oven, or mechanically crushing or cutting
of a battery, that can result in an explosion;

leaving a battery in an extremely high temperature surrounding environment
that can result in an explosion or the leakage of flammable liquid or gas; and
a battery subjected to extremely low air pressure that may result in an exion
or the leakage of flammable liquid or gas.

CAUTION RISK OF EXPLOSION IF BATTERY IS REPLACED BY AN IINCORRECT
TYPE. DISPOSE OF USED BATTERIES ACCORDING TO THEINSTRUCTIONS

Federal Communications Commission (FCC) compliance statement:

1. This device complies with part 15 of the FCC Rules. Operation is subject to
the following two conditions:

(1) This device may not cause harmful interference, and

(2) this device must accept any interference received, including interference
that may cause undesired operation.

2. Changes or modifications not expressly approved by the party responsible for
compliance could void the user's authority to

operate the equipment.

Note: This equipment has been tested and found to comply with the limits
fClass B digital device, pursuant to part 15 of the

FCC Rules. These limits are designed to provide reasonable protection agaifer-
ence in a residential installation. This equipment generates,

uses and can radiate radio frequency energy and, if not installed and usedor-
dance with the instructions, may cause harmful interference to radio

communications. However, there is no guarantee that interference will not in a
particular installation. If this equipment does cause harmful

interference to radio or television reception, which can be determined by the
equipment off and on, the user is encouraged to try to correct the

interference by one or more of the following measures:

-Reorient or relocate the receiving antenna.

-Increase the separation between the equipment and receiver.

-Connect the equipment into an outlet on a circuit different from that to ich
the receiver is connected.

-Consult the dealer or an experienced radio/TV technician for help.

RF Exposure statement:

This equipment complies with FCC radiation exposure limits set forth ffor an
uncontrolled environment. This equipment should be installed and operated
with minimum distance of 20 cm between the radiator and your body. This
transmitter must not be co-located or operating in conjunction with any other
antenna or transmitter.

Customer Service

Service Hotline:

US: +1(888) 241-0666

Operating hours: 11:00 AM-8:00 PM EST

Official Support Email: Service@havion.com

Website: <https://www.havion.com>

Jiangsu Niu Electric Technology Co.,Ltd

No.387 Changting Road, West Taihu Science

and Technology IndustrialPark, Changzhou City,jiangsu,

PR. China

K02 说明书(英语版)

材质: 100克双胶纸, 4C印刷 骑马订

展开尺寸: 240x170mm(成型尺寸120x170mm)

PANTONE 3535 C

