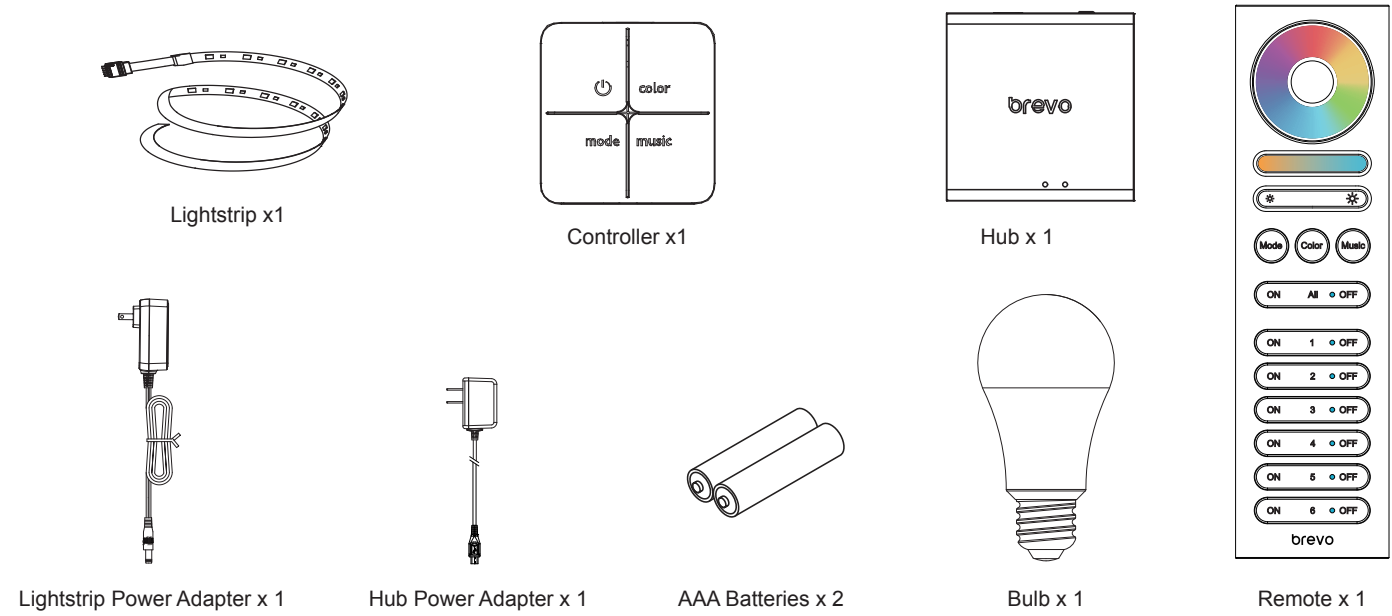


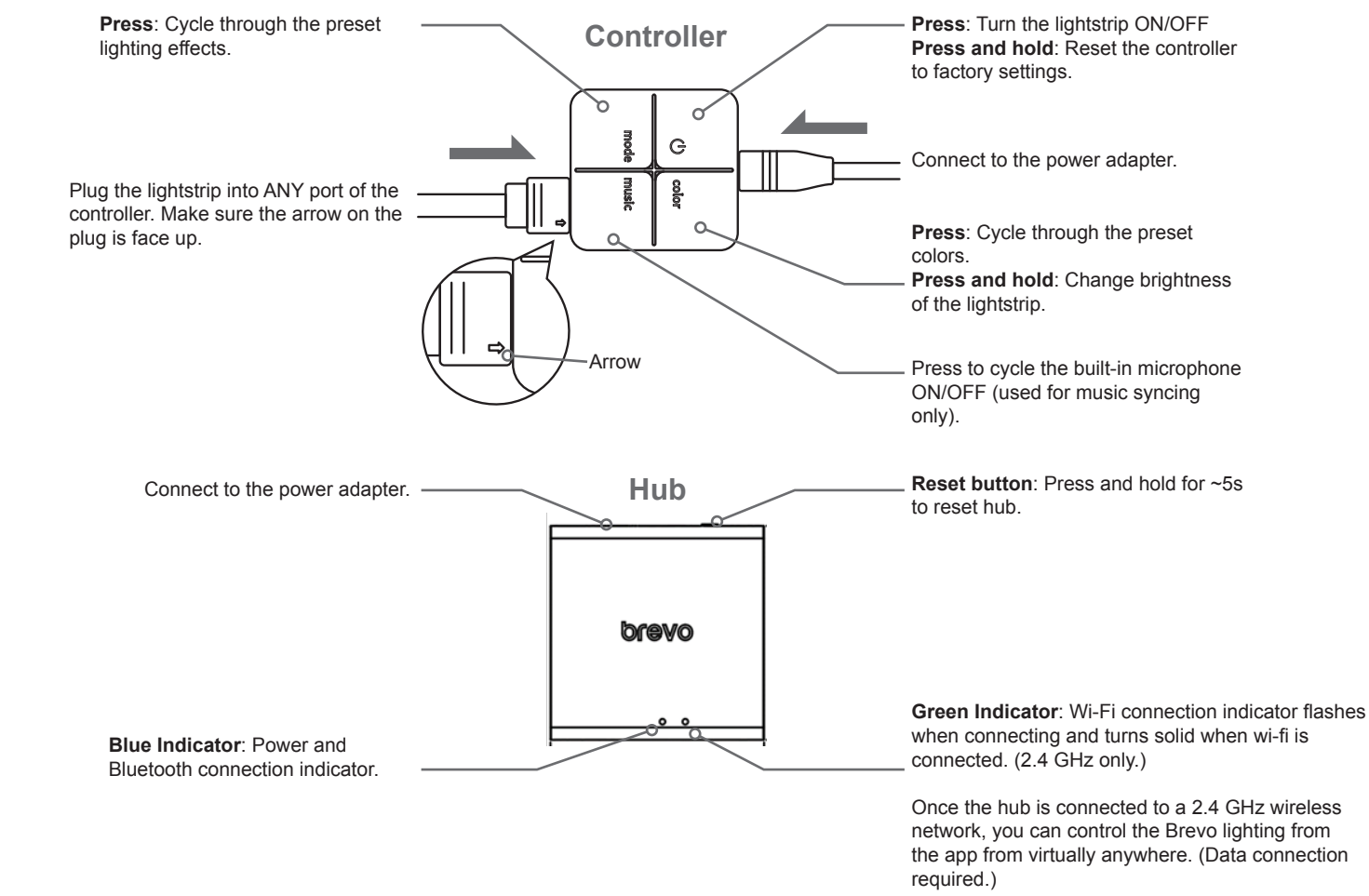
Smart Lighting Kit Quick Start Guide

Thank you for your purchase and welcome to the Brevo smart life! In this quick start guide, you'll find instructions for installation and proper use of your new smart lighting kit. For further questions not covered in this guide, please contact your place of purchase or the Brevo customer service.

What's in the Package



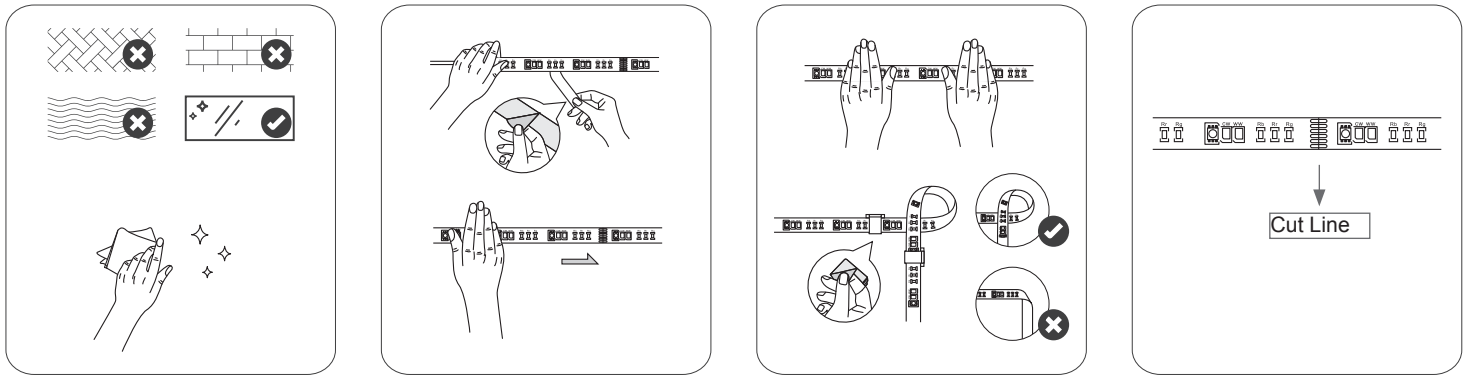
How to Connect



How to Install

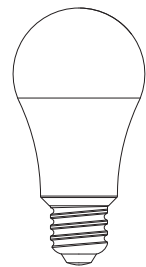
Lightstrip Installation

1. Make sure the surface is smooth, dry and clean before installing. If necessary, use a cloth to clean the surface. DO NOT install the led strip on the dusty/dirty walls or rough/textured surfaces.
2. Peel off the adhesive from the back of LED strip. Position the strip where you want to install the strip. Use your hand to press it onto the surface.
3. Carefully press the strip to ensure it's affixed firmly. Use clips to secure around corners.
4. The length of the LED strip can be shortened by cutting along the indicated **cut line** on the strip (see below). **IMPORTANT:** Only cut along the indicated cut line. Once shortened, the LED strip cannot be lengthened again.

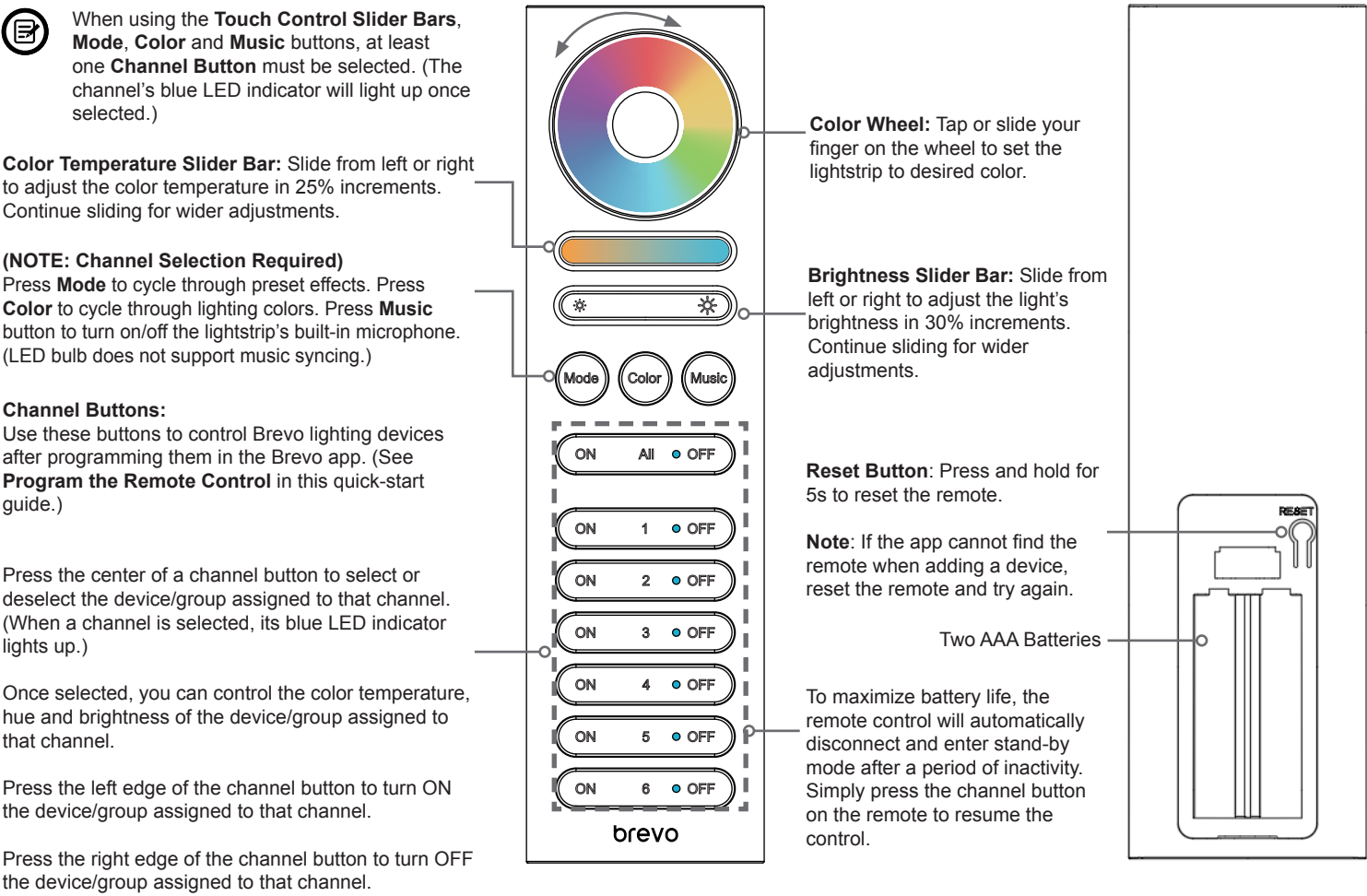


Bulb Installation

The LED bulb comes in U.S. standard E26 base and A19 shape. Search for the bulb in the Brevo app and add it as a device.




Remote Control



Brevo App


App Installation

1. You need a smartphone running iOS 10.0 (or above) or Android 6.0 (or above).
2. Download the Brevo app from App Store (iOS devices) or Google Play (Android devices).
3. Register for an account, then sign-in.

 For more instructions about how to use Brevo app, visit brevosmart.com/support or contact customer service.

Add device

1. On the Brevo app home screen, tap the “+” icon at the top-right corner.
2. Select “Add device” from the menu. All controllable Brevo smart lighting devices will be listed.
3. Tap the “+” icon one by one to add devices to the Brevo app.

 If the app cannot find the remote during this step, press any button on the remote to wake the remote. Or if the remote has already been added but is not responding, press and hold the reset button on the back of the remote for approx. 5s and try again.

Setup a Hub

1. On the Brevo app homescreen, tap the hub.
2. Follow the on-screen instructions to complete hub setup. Make sure the hub is connected to a 2.4GHz WiFi network.

Create a group

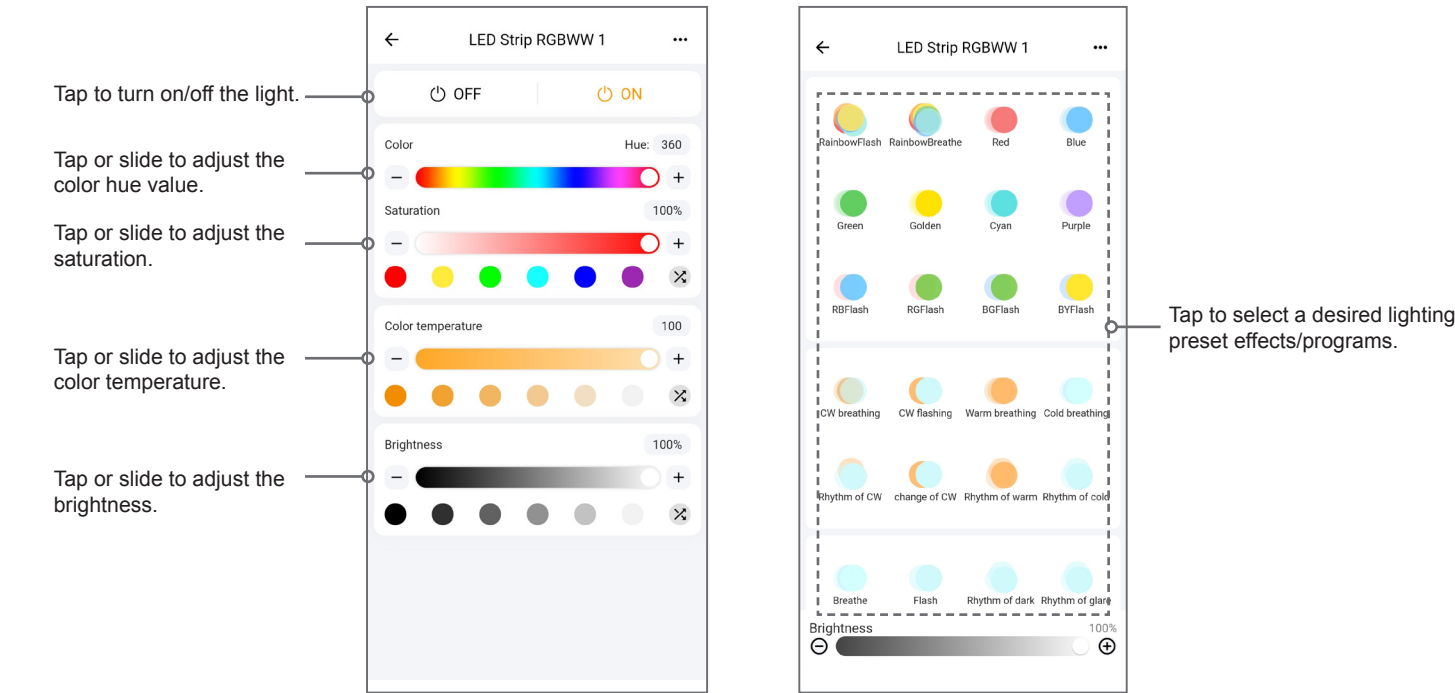
1. Go to home screen and tap the “+” icon at the top-right corner.
2. Select “Create group” on the menu, type a group name, and save.
3. On the “Not added” tab-page, tap the “+” icon to add devices.


Program the Remote Control

1. Tap the remote control on home screen of the app.
2. Tap the “Add/Program” button at the bottom of the screen.
3. Select a channel button from 1 to 6, then tap the “+” icon at the bottom.
4. Locate the device or group you wish to control and tap “+” to confirm. Then press OK button.
5. Tap “Save” at the top-right corner, then press any physical button on the remote to complete the process.
6. Repeat the above steps to assign more channels.

Control Brevo Smart Light Devices from the Brevo App

Tap the device or the group on home to open the control settings.



-  Images for illustrative purposes only. Actual images may vary.
- App content subject to change without notification.
 - App content may differ from different operating system.

One Year Limited Hardware Warranty

Your Brevo Smart Lighting Kit (“Product”) includes a One Year Limited Hardware Warranty (“Warranty”). The Warranty covers product defects in materials and workmanship under normal use. This Warranty is limited to residents of the United States and Canada only and is available only to original purchasers. This Warranty gives you specific legal rights and you may also have other rights which vary from state to state. This Warranty starts on the date of your purchase and lasts for three years (the “Warranty Period”). The Warranty Period is not extended if the Product is repaired or replaced. We may change the availability of this limited warranty at our discretion, but any changes will not be retroactive. Warranty services are provided by Brevo Warranty Pro (“WP”). If a hardware defect arises and a valid claim is received within the Warranty Period, at its option and to the extent permitted by law, WP will: (1) repair the hardware defect by using new or refurbished parts that are equivalent to new in performance and reliability; or (2) exchange the Product with a new product or a refurbished one that is substantially equivalent to the original product. This Warranty is for one replacement only of like-items and does not cover items out of production if the product is no longer made or stocked. This Warranty is not assignable or transferable. The original purchaser may call WP’s toll-free number at 1-855-229-9472 for service requests. When a product or part is exchanged, any replacement item becomes your property and the replaced item becomes WP’s property. This warranty only covers technical hardware defectiveness during the warranty period and under normal use conditions. WP does not warrant uninterrupted or error-free operation of this Product. This Warranty does not cover any damage due to: (a) transportation; (b) storage; (c) improper use; (d) failure to follow the product instructions or to perform any preventive maintenance; (e) modifications; (f) unauthorized repair; (g) normal wear and tear; (h) overclocking; or (i) external causes such as accidents, abuse, or other actions or events beyond our reasonable control.

Important: Changes or modifications to this unit not expressly approved by the party responsible for compliance could void the user’s authority to operate the equipment.

DISCLAIMER OF WARRANTY: THE REMEDIES DESCRIBED ABOVE ARE YOUR SOLE AND EXCLUSIVE REMEDIES AND OUR ENTIRE LIABILITY FOR ANY BREACH OF THIS LIMITED WARRANTY. OUR LIABILITY SHALL UNDER NO CIRCUMSTANCES EXCEED THE ACTUAL AMOUNT PAID BY YOU FOR THE DEFECTIVE PRODUCT, NOR SHALL WE UNDER ANY CIRCUMSTANCES BE LIABLE FOR ANY CONSEQUENTIAL, INCIDENTAL, SPECIAL OR PUNITIVE DAMAGES OR LOSSES, WHETHER DIRECT OR INDIRECT. SOME STATES DO NOT ALLOW THE EXCLUSION OR LIMITATION OF INCIDENTAL OR CONSEQUENTIAL DAMAGES, SO THE ABOVE LIMITATION OR EXCLUSION MAY NOT APPLY TO YOU. THE DURATION AND REMEDIES OF ALL IMPLIED WARRANTIES, INCLUDING WITHOUT LIMITATION THE WARRANTIES OF MERCHANTABILITY AND FITNESS FOR A PARTICULAR PURPOSE ARE LIMITED TO THE DURATION OF THIS EXPRESS LIMITED WARRANTY.

FCC RELATED INFORMATION:

This equipment has been tested and found to comply with the limits for a Class B digital device, pursuant to Part 15 of the FCC Rules. These limits are designed to provide reasonable protection against harmful interference in a residential installation. This equipment generates, uses, and can radiate radio frequency energy and, if not installed and used in accordance with the instructions, may cause harmful interference to radio communications.

However, there is no guarantee that interference will not occur in a particular installation. If this equipment does cause harmful interference to radio or television reception, which can be determined by turning the equipment off and on, the user is encouraged to try to correct the interference by one or more of the following measures:

- Reorient or relocate the receiving antenna.
- Increase the separation between the equipment and receiver.
- Connect the equipment into an outlet on a circuit different from that to which the receiver is connected.
- Consult the dealer or an experienced radio/TV technician for help.

This device complies with Part 15 of the FCC Rules. Operation is subject to the following two conditions: (1) this device may not cause harmful interference, and (2) this device must accept any interference received, including interference that may cause undesired operation.

For Hub

This equipment complies with FCC radiation exposure limits set forth for an uncontrolled environment. This equipment should be installed and operated with a minimum distance of 20cm between the radiator & your body. This transmitter must not be co-located or operating in conjunction with any other antenna or transmitter.

