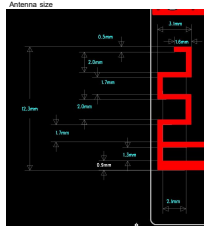


Gain Efficiency						
Frequency (MHz)	Gain (dBi)	Efficiency (%)	Gain (dBi)	Efficiency (%)	Gain (dBi)	Efficiency (%)
2400	0.65	-19.83	-0.64	0.15	-3.16	48.36%
2410	0.22	-20.6	-0.89	-0.13	-3.49	44.81%
2420	0.42	-20.99	-0.65	0.05	-3.28	46.96%
2430	0.16	-20.92	-0.78	-0.23	-3.81	44.09%
2440	-0.05	-21.05	-0.89	-0.44	-3.71	42.92%
2450	-0.09	-20.96	-0.9	-0.47	-3.73	42.39%
2460	-0.36	-21.15	-1.15	-0.76	-3.99	39.95%
2470	-0.42	-21.23	-1.2	-0.87	-4.04	39.45%
2480	-0.41	-21.22	-1.17	-0.93	-4.03	39.64%
2490	-0.95	-21.8	-1.71	-1.55	-4.6	34.71%
2500	-0.77	-21.73	-1.66	-1.46	-4.51	35.41%
2510	-0.94	-22.32	-1.85	-1.68	-4.77	33.31%
2520	-1.06	-22.76	-2.03	-1.85	-5.05	31.25%
2530	-0.9	-22.9	-2	-1.72	-5.04	31.34%
2540	-1.07	-23.28	-2.29	-1.9	-5.38	28.99%
2550	-1.23	-23.48	-2.55	-2.08	-5.72	26.80%
2560	-1.08	-23.11	-2.41	-1.91	-5.73	26.74%
2570	-1.27	-22.85	-2.67	-2.09	-6.07	24.69%
2580	-1.66	-22.51	-3.11	-2.46	-6.58	21.99%
2590	-1.63	-21.87	-2.94	-2.29	-6.63	22.25%
2600	-2.25	-21.96	-3.61	-2.98	-7.29	18.67%

manufacturer: Guangdong Kexiang Electronic Technology Co., LTD
 model: ATN_JR05
 Type: PCB Antenna



Frequency (MHz)

- 2400
- 2410
- 2420
- 2430
- 2440
- 2450
- 2460
- 2470
- 2480
- 2490
- 2500
- 2510
- 2520
- 2530
- 2540
- 2550
- 2560
- 2570
- 2580
- 2590
- 2600

Frequency (MHz)

- 2400
- 2410
- 2420
- 2430
- 2440
- 2450
- 2460
- 2470
- 2480
- 2490
- 2500
- 2510
- 2520
- 2530
- 2540
- 2550
- 2560
- 2570
- 2580
- 2590
- 2600

Frequency (MHz)

- 2400
- 2410
- 2420
- 2430
- 2440
- 2450
- 2460
- 2470
- 2480
- 2490
- 2500
- 2510
- 2520
- 2530
- 2540
- 2550
- 2560
- 2570
- 2580
- 2590
- 2600

Frequency (MHz)

- 2400
- 2410
- 2420
- 2430
- 2440
- 2450
- 2460
- 2470
- 2480
- 2490
- 2500
- 2510
- 2520
- 2530
- 2540
- 2550
- 2560
- 2570
- 2580
- 2590
- 2600

