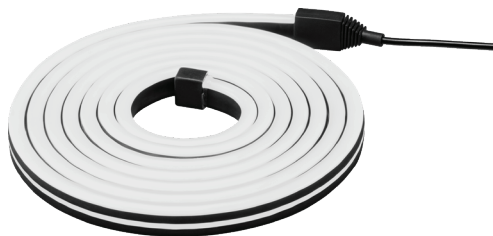


enbrighten

USB-Powered Flex Light



Congratulations on your new Enbrighten USB-Powered Flex Light! This sleek LED strand features vibrant color modes and a flexible installation.

Please read all instructions and safety warnings before use. Hold onto this manual in case you need it later.

Thank you for your purchase!

Instructions made easy



Read instructions or watch easy-to-follow video.

Scan code or visit byjasco.com/70900i

Register your product



Receive exclusive deals and register your product.

Scan code or visit byjasco.com/deals



Discover innovative lighting solutions at enbrightenme.com.



Like our product?

Leave a review on your favorite retailer website or amazon.com.



Having Problems?

Let us know how we can help.

Call **1-800-654-8483** between 7AM-8PM, M-F, Central Time.

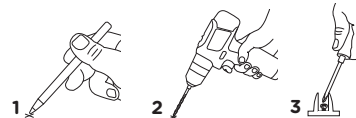
INSTALLATION

This flexible LED strand can be installed to surfaces with the included clips, screws, and tape, laid out in a line or wrapped around corners. Choose a clean, sturdy mounting location that is within reach of a 5V, 2.0A USB-A power source.

USB-A power source (not-included).

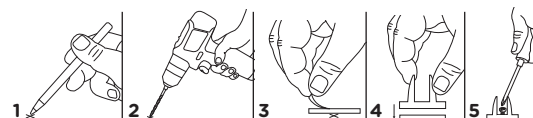
OPTION 1: SCREWS AND CLIPS

1. Hold each clip in place and mark each screw location using a pencil.
2. Drill pilot holes on each marking with a 1/16in. drill bit.
3. Secure the clips with screws and a Phillips-head screwdriver



OPTION 2: TAPE, SCREWS AND CLIPS

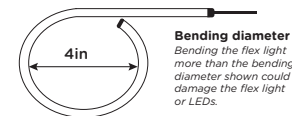
1. Hold each clip in place and mark each screw location using a pencil.
2. Drill pilot holes on each marking with a 1/16in. drill bit.
3. Mount the double-sided tape over each pilot hole.
4. Attach the clips to the double-sided tape.
5. Secure the clips with screws and a Phillips-head screwdriver.



FLEX LIGHT

1. Gently fit the light into each installed clip.
2. Plug the power cord into a 5V, 1.5A USB-A power source.

IMPORTANT: Light output will be low if using a power source less than the recommended amount.

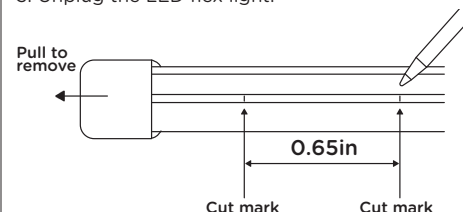


CUTTING THE FLEX LIGHT

WARNING: RISK OF SHOCK. DO NOT CUT FLEX LIGHT WHILE PLUGGED INTO POWER.

MARK THE CUT LOCATION

1. Locate the dark cut marks through the transparent strip on the side of the flex light.
NOTE: You may need to plug the flex light in to see the cut mark locations more easily.
2. Draw a line to mark the cut location.
3. Unplug the LED flex light.



REMOVE END CAP

1. Pull on the end cap to remove and save for later use.
2. Cut the flex light at the marked location using wire cutters or scissors.

REINSTALL END CAP

1. Apply a small amount of glue inside the end cap.
2. Push the end cap into place over the cut portion of the flex light.

REMOVING THE FLEX LIGHT

Unplug the light and carefully remove it from the clips without tugging or pulling. Store the lights in a dry location.



OPERATION

- Power:** ON/OFF control
- Red:** Red solid color
- Green:** Green solid color
- White:** Select warm white or cool white light
- Blue:** Blue solid color
- Holiday:** Red and green combination
- July 4th:** Red, white and blue combination
- Halloween:** Purple and orange combination
- Color-Select:** Choose your favorite single color: red, green, blue, orange, yellow, turquoise and magenta
- 3Mix:** Red, green and blue
- 7Mix:** Red, green, blue, orange, yellow, turquoise and magenta
- 10Mix:** Red, green, blue, orange, yellow, turquoise, light blue, purple, magenta, white
- Strobe:** Colors strobe from one to the next
- Pulse:** Color intensity increases and decreases from one to the next
- Wave:** Colors flow and fade along the strand
- Chase:** Colors chase each other along strand
- Wave Chase:** Colors quickly chase each other along strand
- Current:** Segments of color flow from one end of the strand to the next
- Auto:** Strand fades between each color option
- Speed:** Press (+) or (-) to adjust speed of selected mode

NOTE: This remote requires 1 CR2025 battery (included). Point the remote directly at the light for best results. Keep the remote indoors when not being used. The remote is not waterproof.

IN-LINE CONTROLLER

If you don't have access to a remote, use the in-line controller to turn the light ON/OFF and to access certain modes.

⚠ WARNING

- FOR INDOOR USE ONLY.
- DO NOT MOUNT OR SUPPORT FLEXIBLE LIGHT IN A MANNER THAT CAN DAMAGE THE OUTER JACKET OR CORD INSULATION.
- RISK OF FIRE AND ELECTRIC SHOCK. UNCOIL FLEXIBLE LIGHT PRIOR TO PLUGGING IN. DO NOT USE WITH EXTENSION CORD NEAR WATER OR WHERE WATER MAY ACCUMULATE. FOR USE ONLY ON GFCI PROTECTED CIRCUITS. DO NOT SUBMERGE OR LET FLEX LIGHT, CONTROLLER OR ADAPTER SIT IN STANDING WATER.
- MATERIAL MAY BECOME BRITTLE WHEN COLD. DO NOT INSTALL WHERE IT MAY BE STEPPED ON OR SUBJECT TO PHYSICAL DAMAGE.
- DO NOT INSTALL NEAR FLAMMABLE LIQUIDS.
- DO NOT INSTALL CLOSER THAN 3 METERS FROM A SWIMMING POOL SURFACE.
- DO NOT COVER FLEXIBLE LIGHT AS THE COVERING MAY CAUSE THE FLEXIBLE LIGHT TO OVERHEAT AND MELT OR IGNITE.
- TO PREVENT OVERHEATING, DO NOT ALLOW CONTACT BETWEEN FLEXIBLE LIGHT CABLES OR PARTS OF THE FLEXIBLE LIGHT CABLE. MAINTAIN AT LEAST 12MM (0.47IN.) SPACING BETWEEN LIGHT CABLE OR LIGHT CABLE PARTS.
- NOT SUITABLE FOR FIELD SPLICING.

⚠ CAUTION

- BATTERIES MAY LEAK HARMFUL LIQUIDS OR IGNITABLE MATERIALS OR EXPLODE CAUSING INJURY AND PRODUCT DAMAGE.
- DO NOT MIX OLD AND NEW OR OTHER BATTERY TYPES.
- REPLACE ALL BATTERIES AT THE SAME TIME.
- REPLACE EXHAUSTED BATTERIES IMMEDIATELY. REMOVE BATTERIES IF PRODUCT IS TO BE UNUSED FOR EXTENDED PERIODS OF TIME.

Suppliers Declaration of Conformity | Model #: 70857, 70900 | Jasco Products Co., 10 E. Memorial Rd., Oklahoma City, OK 73114, www.byjasco.com

This device complies with Part 15 of the FCC and Industry Canada license exempt RSS standards. Operation is subject to the following two conditions: (1) this device may not cause harmful interference, and (2) this device must accept any interference received, including interference that may cause undesired operation.

FCC NOTE: The manufacturer is not responsible for any radio or TV interference caused by unauthorized modifications to this equipment. Such modifications could void the user's authority to operate the equipment.

NOTE: This equipment has been tested and found to comply with the limits for a Class B digital device, pursuant to Part 15 of the FCC Rules. These limits are designed to provide reasonable protection against harmful interference in a residential installation. This equipment generates, uses and can radiate radio frequency energy, and if not installed and used in accordance with the instructions, may cause harmful interference to radio communications. However, there is no guarantee interference will not occur in a particular installation. If this equipment does cause harmful interference to radio or television reception, which can be determined by turning the equipment off and on, the user is encouraged to try to correct the interference by one or more of the following measures:

- Reorient or relocate the receiving antenna.
- Increase the separation between the equipment and receiver.
- Connect the equipment into an outlet on a circuit different from which the receiver is connected.
- Consult the dealer or an experienced radio/TV technician for help.

Important note: The device has been evaluated to meet general RF exposure requirements. The device can be used in portable exposure condition without restriction. Any changes or modification not expressly approved by the party responsible for compliance could void the user's authority to operate the equipment.

Electrical Ratings Input: 5VDC, 2.0A

70857, 70900 v1 05/23

MADE IN CAMBODIA

Distributed by Jasco Products Company LLC, 10 E. Memorial Rd., Oklahoma City, OK 73114. This Jasco product comes with a 1-year limited warranty. Visit www.byjasco.com for warranty details.

Questions? Contact our U.S.-based Consumer Care at 1-800-654-8483, M-F, 7AM-8PM Central Time.

For product patent information, visit www.byjasco.com/patents.



byjasco.com/recycle
paper made from 25% post-consumer waste