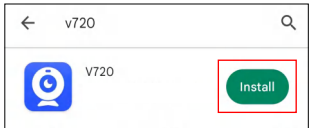


正面

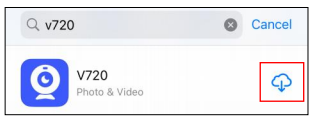
Smart Ear Stick

General Manual

- Download method 1:
Android phone can visit "Google Play" store;
iPhone visit "APP Store" to search for "V720"
software to download and install.



Android Phone



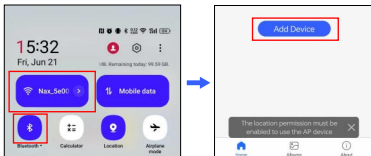
iPhone

Download method 2:
Android/Apple phones can use the browser to
scan the QR code below to download (Android
can complete the download directly through
the web page, Apple jump to the "APP Store" to
complete the download).



V720 Universal QR Code

- Android phone auto connect steps:
1. Android phone pull down the shortcut menu,
turn on the WLAN, Bluetooth, location
information icon switch can be.
2. Open the app, click on the prompt that pops
up at the bottom to complete the app location
authorization.

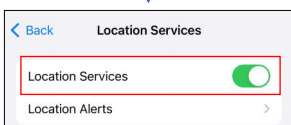
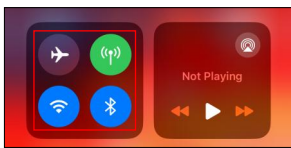


Android Phone

Android Phone

iPhone connection steps:

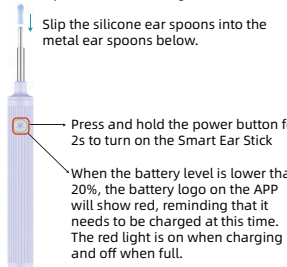
- Pull down the shortcut menu, open the WLAN,
Bluetooth icon switch
- Then click on the phone settings>Privacy &
security>Location services, open the switch.



iPhone

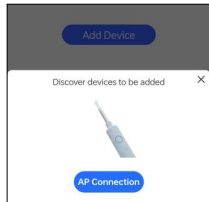
- Turn on the power of the visual ear scooper
Button model: Long press for 2 seconds to
turn on the power;
Magnetic model: Open the cover to turn on
the power.

Be sure to assemble the ear spoon set
in place before use to prevent the ear
spoon set from falling off.



- AP direct connection (Android phone):**

Open V720 APP, the bottom of the pop-up
window of AP direct connection: at this time, it
will automatically connect to the WiFi of the
earphone beginning with Nax, prompting the
connection is successful (AP direct connection
is only supported by Android phones, iPhone
need to be connected manually).

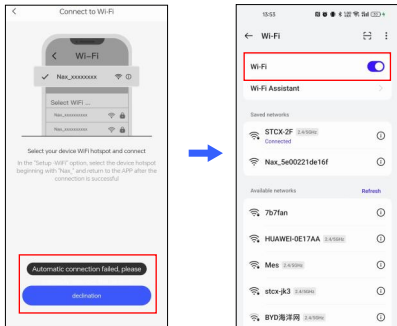


Android Phone

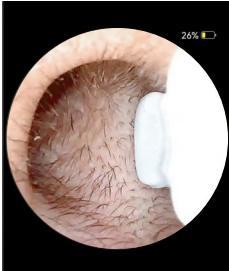
Manual Connection Steps:

1. Android phones Manual Connection Steps:
When your Android phone can't use the
connection AP to connect automatically or the
connection reports an error, please manually
click "Direct AP Connection" or "Go to
Connection", the system will automatically jump
to the phone's WiFi setting page, manually
select the WiFi that starts with Nax and connect
it.

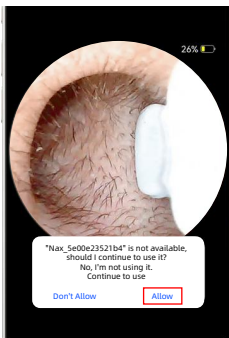
2. iPhone Manual Connection Steps:
When iPhone connection reports an error, you
need to click "Go to Connect", then it will
automatically jump to the recently opened
phone settings page, which requires you to
switch to the wireless WLAN page and then
manually select the WiFi with the Nax
beginning and connect.



- When the ear spoon WiFi connection is successful, return
to APP directly into the ear picking screen (the first
connection may be a little delayed). Button indicator
status: the button light is flashing green when not
connected to WiFi, and it is always on green when
connected to WiFi successfully.

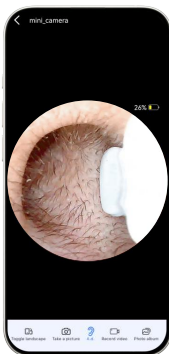


- If you get a pop-up message that the current WLAN is
unavailable during earwax removal, do you want to
continue to use this WLAN? Or if the current WLAN is not
available and another WLAN is detected, do you want to
switch to another WLAN? Select "Keep Connected". The
purpose is to keep the WiFi connection of the ear stick.



反面

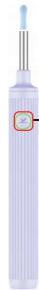
- The app allows you to see the inside of your ear in real
time, without the ear spoons blocking your view.



Introduction of Quick Function Buttons

- Toggle Landscape
- Take a picture
- A.d
- Record video (need to
record more than 6
seconds)
- Photo album
- Battery

- Turn on the power of the visual ear scooper
Button model: Long press for 2 seconds to turn on
the power;
Magnetic model: Open the cover to turn on the
power.



Press and hold the power
button for 2s to turn off the
smart ear stick, the display
light does not light up

Function Introduction

- Gently put the smart ear stick into the ear, you can
observe the condition of the ear canal and clean the
earwax. Children should be used under adult supervision.



- This product is suitable for cleaning earwax and
observing the ear canals of people and pets.



Product Details

- Product Picture



- Product Parameters

Product Name	Smart ear stick
Image Transfer Rate	30fps
Image transmitter	CMOS
Operating Ambient Temperature	-10~50°C
Battery Type	Li-ion Battery
Input Current	DC -5V1A
Battery life time	About 30 minutes
Charging time	About 1 hour
Probe Diameter	3.5mm
Optimal Focal Length	1.6cm



Precautions

- Common problems and solutions

Frequently Asked Questions	Solution
No response after startup:	Please use the supplied charging cable to charge for 1 hour Turn off and restart the otoscope
Application Crash:	Uninstall the existing APP. Then scan the QR code install again
Ear spoons suddenly shut down:	The battery is low, please use the supplied charging cable to charge, the charging time is 1 hour
After connect to the APP the camera cannot display real-time image correctly:	Disconnect the phone from WiFi, restart the WiFi, and then reconnect to WiFi
WiFi connection is unstable and sometimes disconnect in seconds:	Restart the otoscope and reconnect the APP Some phones require authorization
The screen appears to be stuttering:	If the battery is too low, the screen transmission will be affected, you can use it with a full charge The background completely cut off the operation of the app, re-open again
Connection issues have not been resolved:	Our App are always being updated to fix bugs and adapt to some of the newer phone operating systems, so if you can't connect, keep an eye on the app store to see if the latest version is available!

If the above operation fails to solve the problem, please contact customer service, we will further provide you with practical solutions

- Why am I connecting to the WiFi emitted by the smart ear stick, is it safe?
Will privacy be compromised?

A: Currently the Bluetooth connection cannot support real-time video transmission, only the built-in WiFi of the device can ensure that it can transmit the picture inside the ear canal in real time. The built-in WiFi is a LAN connection and does not support data uploading, so it will not leak your privacy. If you have concerns, you can turn off the data network transmission of your smartphone, which will not affect the normal use of the device.

- After the iPhone app connects, the device jumps to the Settings page or other pages within Settings instead of the WiFi page, why is that?

A: Due to iOS protocol issue, currently the app doesn't support to jump to WiFi list page directly, but default to the last operation within settings, if your settings are not resident in the background, the default open is the initial page of settings, so you can find WiFi settings easily.

- Precautions

- This product is not suitable for children under 6 years old
- Children over 6 years old do not recommend children to use this otoscope alone, please use it when accompanied by an adult.
- When helping children pick their ears, please use silicone ear picks to keep children sitting and operate the product horizontally to get the best experience.
- Please observe the surrounding situation before using this product to prevent the ear canal damage caused by the collision of others and pets.
- When cleaning the lens, please wipe with water or alcohol swab.
- Avoid direct exposure to the sun to avoid softening, especially the silicone ear spoon.
- This product has built-in rechargeable lithium battery. If you do not use it frequently, please keep charging it once a month to prevent equipment failure.
- During the use of this product, there will be a slight temperature rise (no more than 35°C), please rest assured to use.

- The FCC warning:

Changes or modifications not expressly approved by the party responsible for compliance could void the user's authority to operate the equipment.
This device complies with Part 15 of the FCC Rules. Operation is subject to the following two conditions:
(1) This device may not cause harmful interference, and
(2) This device must accept any interference received, including interference that may cause undesired operation.

Note: This equipment has been tested and found to comply with the limits for a Class B digital device, pursuant to Part 15 of the FCC Rules. These limits are designed to provide reasonable protection against harmful interference in a residential installation. This equipment generates, uses, and can radiate radio frequency energy, and if not installed and used in accordance with the instructions, may cause harmful interference to radio communications. However, there is no guarantee that interference will not occur in a particular installation. If this equipment does cause harmful interference to radio or television reception, which can be determined by turning the equipment off and on, the user is encouraged to try to correct the interference by one or more of the following measures:
- Reorient or relocate the receiving antenna.
- Increase the separation between the equipment and receiver.
- Connect the equipment into an outlet on a circuit different from that to which the receiver is connected.
- Consult the dealer or an experienced radio/TV technician for help.



Made in China