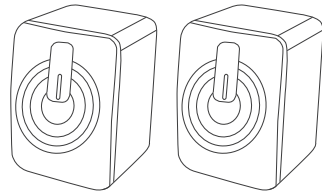


Bobtot®

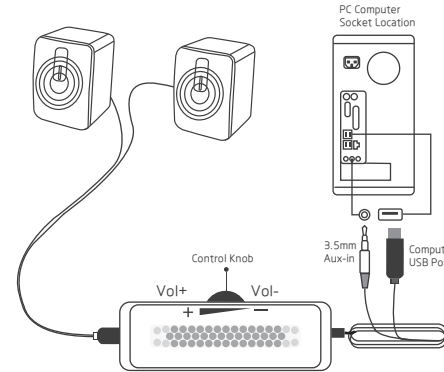


MINI2 BT Version
Multimedia speaker

USERS MANUAL

SPECIFICATIONS:

1. Power Output: RMS 3W X 2 (THD=10%)
2. Connection options: BT & 3.5mm AUX-in
3. Power Input: USB direct plug (no built-in battery)
4. Power supply: (5V, 1A)
5. Speaker specifications: 2 inches X2
6. Adjustment form: wire-controlled volume adjustment
7. Frequency response: 45Hz~16KHz
8. Signal to noise ratio: > 88dB
9. Impedance: 4 Ω
10. Distortion: ≤ 0.5%



Note: The appearance of the speaker is for reference only, please refer to the actual product!

Function Description About Control Knob

1. Adjust the volume

Use the dial switch to adjust the volume of the sound. Pull to "Vol -" or "Vol+" to adjust the volume, the volume is at the maximum when you hear "dudu".

2. Next song or previous song

Press "Vol -" direction about 1.5 seconds to the previous song.
Press "Vol +" direction about 1.5 seconds to the next song.

3. Switch the mode between BT and wired

Long Press the dial switch for about 1.5 seconds to switch the mode;
When you hear the "dududu", which is in BT mode, search "MINI2" on your BT list from your device.
When you hear "du", it's in wired mode, you could directly play the playlist of your device.

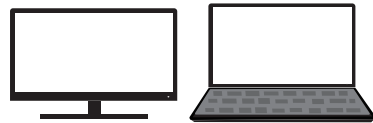
4. Switch RGB light mode (6 colors)

Short press the dial switch in any mode. You can switch from RGB fast flash — RGB slow flash — Red — Green — Blue — Purple — White — Yellow — Lights off.

5. Disconnect BT and use the new device connect

Double press the dial switch and you will hear "Disconnected".
When you want to use the new device to connect "MINI 2" speaker via BT, only search for your BT list and connect, you will hear "Connected".

Connecting to PC and MAC



Your PC will automatically detect the MINI 2 when you plug in the USB cable and 3.5mm AUX-in cable. RGB light will be working.

If you do not hear any audio playing from the speaker, please check the output device list from the "Sound" setting and set the "MINI 2" as the output speaker. Or you can connect by BT, choose "MINI 2" from your BT list.

Connecting to MP3/Mobile Phones/ other Audio Devices



You can also connect the speaker to your device via 3.5mm AUX-in cable or BT mode.

*Note that the speaker has to be powered via USB while connected via AUX-in.

Troubleshooting

About Sound

If there is no sound response after plugging it into the computer USB port, please make sure:

1. The USB interface of your computer can work normally or not?
2. The audio driver of your computer sound is up to date or not?
3. Click the "Speaker" icon in the taskbar, and make sure that "Headset(Realtek(R)Audio)" is selected as your computer playback device.

About BT Connection

1. Make sure the BT of the speaker is not connected by other devices.
2. Unplug the USB from your device.
3. Delete "MINI2" memorized on your device, then search for "MINI2" and connect again.

FCC Requirement

Any changes or modifications not expressly approved by the party responsible for compliance could void the user's authority to operate the equipment.

This device complies with Part 15 of the FCC Rules. Operation is subject to the following two conditions:

- (1) this device may not cause harmful interference, and
 - (2) this device must accept any interference received, including interference that may cause undesired operation.
- Note: This equipment has been tested and found to comply with the limits for a Class B digital device, pursuant to Part 15 of the FCC Rules. These limits are designed to provide reasonable protection against harmful interference in a residential installation. This equipment generates, uses, and can radiate radio frequency energy, and if not installed and used in accordance with the instructions, may cause harmful interference to radio communications. However, there is no guarantee that interference will not occur in a particular installation. If this equipment does cause harmful interference to radio or television reception, which can be determined by turning the equipment off and on, the user is encouraged to try to correct the interference by one or more of the following measures:
- Reorient or relocate the receiving antenna.
 - Increase the separation between the equipment and receiver.
 - Connect the equipment into an outlet on a circuit different from that to which the receiver is connected.

- Consult the dealer or an experienced radio/TV technician for help.
This equipment complies with FCC radiation exposure limits set forth for an uncontrolled environment. This equipment should be installed and operated with a minimum distance of 20cm between the radiator & your body. This transmitter must not be co-located or operating in conjunction with any other antenna or transmitter.

MORE QUESTIONS ?

If you require more assistance, please do not hesitate to contact us directly via bobtot-us@bobtot.net. Alternatively, you can also contact us in your order list or get support online easily on Amazon.

Company: MOSWS INTERNATIONAL LIMITED
Add: FLAT/RM 07, BLK B, 5/F KING YIP FACTORY BUILDING, 59 KING YIP STREET, KWUN TONG, KOWLOON HONGKONG 999077
Production Standard: IEC/EN60065
MADE IN CHINA



深圳市恩科电子有限公司						SHENZHEN CITY ENKOR ELECTRONICS LTD					
设计绘图	测试员	品质经理	业务经理	产品经理	研发经理	客户品牌	内部型号	零件名称	材料	单位	版本
										MM	
料号					部门	研发部	PMC	采购部	品管部	木箱部	生产部
BZO-MINI2SMSB02						✓		✓	✓		✓

技术要求:

1. 成品尺寸65*65mm
2. 128g铜版纸
3. 风琴折
4. 黑色单色印刷