

DanceDanceRevolution Controller

INSTRUCTION MANUAL

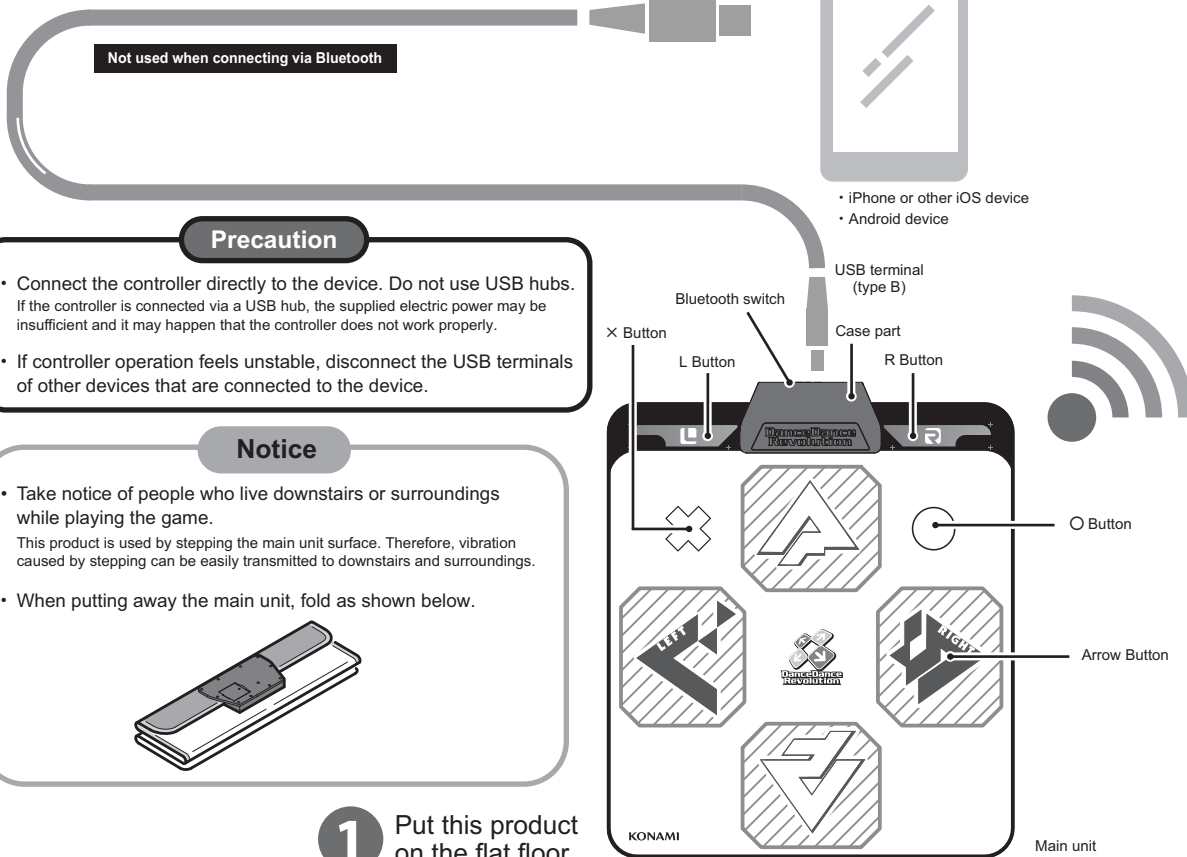
For ages 12 and up

Thank you for your purchase of the "DanceDanceRevolution Controller". Please read this manual before using this product, and be sure to use this product correctly. Safety information, the warranty policy, and specifications are listed on the reverse side. Please be sure to read them before using this product.

When the player is a child, the guardian needs to read this manual and teach how to use correctly.

How to connect via USB

- 1** Put this product on the flat floor.
- 2** Connect the USB cable compatible with this product. Connect it before launching the game.
 * The USB cable is not attached.
- 3** Launch the game.
 * The controller cannot be recognized if the USB cable is connected after launching the game.

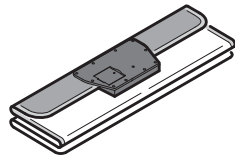


Precaution

- Connect the controller directly to the device. Do not use USB hubs. If the controller is connected via a USB hub, the supplied electric power may be insufficient and it may happen that the controller does not work properly.
- If controller operation feels unstable, disconnect the USB terminals of other devices that are connected to the device.

Notice

- Take notice of people who live downstairs or surroundings while playing the game. This product is used by stepping the main unit surface. Therefore, vibration caused by stepping can be easily transmitted to downstairs and surroundings.
- When putting away the main unit, fold as shown below.



- 1** Put this product on the flat floor.

Caring for the main unit

Care with disinfectant spray etc. made from sodium hypochlorite regularly. If smudges, sebum or sweat etc. adhere the main unit, it promotes the growth of fungi and bacteria. Before using the spray etc., read the instructions for it.

Do not use organic solvents (such as paint thinner, benzene, alcohol, and ethanol), abrasive cleaners, chemically treated cloths, or similar substances. They can cause cracking and damage.

How to connect via Bluetooth

Configure the device so that Bluetooth can be used.

- 1** Insert the batteries. Use the same type of battery, and do not mix new and old batteries. (For the location of the battery box, see the reverse side.)
- 2** Turn ON the Bluetooth switch. The pilot lamp illuminates blue for approximately 10 seconds. (For the location of the switch and the pilot lamp, see the reverse side.)
- 3** Wait for the mobile application search to activate. The pilot lamp flashes approximately 2 times per second while searching.
- 4** Launch the mobile application.



- iPhone or other iOS device
- Android device

Precaution

- When using an Android device, it is necessary to setup location settings. It is necessary to setup location settings of the device and allow the application to access the location information so as to make the Bluetooth connection.
- Do not perform pairing from the mobile device. Pairing cannot be performed from the Bluetooth settings menu of the mobile device.
- Turn ON with the USB cable disconnected. If the Bluetooth switch is turned ON when the USB cable is connected, cable communications will take priority.

See here for information about the operating environment.



Pilot lamp illumination patterns

Illumination pattern	Status
Continuously lit	Initializing Bluetooth / connecting
Flashing approx. 2 times per second	Searching for mobile application
Flashing approx. 1 time per second	Batteries nearly depleted

Precautions when using the Bluetooth function



- The distance between the controller and Bluetooth-equipped device when connecting should be 10 m (32.81 ft) or less and unobstructed.
- Keep 2 m (6.56 ft) or more away from other electric appliances, audio-visual devices, or office automation equipment (3 m [9.84 ft] or more from microwave ovens).
- If there is another nearby electric appliance with the power ON, a correct connection may not be possible.
- If there is a radio transmitter or other device that produces radio waves nearby, a correct connection may not be possible.
- In order to enjoy the game, be sure to play in a stable communication environment.

For safe use

Meanings of warnings

This manual contains the following warning indications.
Be sure to understand the contents correctly before using this product.



Degree of hazard or damage

 WARNING	Risk of death or serious injury
 CAUTION	Risk of injury or property damage

Information for guardians

Keep an eye on your children when they play. Teach them how to use correctly.

Explanation of symbols

	Indicates acts that are prohibited.
	Indicates required acts that must be performed.

Read the following warnings and cautions carefully and be sure to observe them.

WARNING



Do not swing the main unit or handle it roughly.
There is the risk of injury, damage, or malfunction.



If you are utilizing an electronic medical device, check with its manufacturer or retailer concerning the effects of radio waves before using this product (when using the Bluetooth function).
There may be the risk of affecting the operation of the electronic medical device.



Place this product in a location out of the reach of children.

When the USB cable is connected, winding it around the neck can cause asphyxiation accidents, injury, or malfunction.



Observe the precautions when using batteries.
If batteries are improperly handled, they can cause injury, malfunction, or fire. Be sure to read the precautions printed on the batteries before using them.

CAUTION



Do not use this product in the following locations.
There is the risk of accidents, malfunction, or damage.

- On the heated carpet or the floor where underfloor heating is running
- Unstable locations such as a table
- Slippery locations
- Outdoors or other location exposed to rainwater leakage or condensation
- Locations directly exposed to heat from heating and cooling or other equipment
- Locations where there is oily smoke, cigarette smoke, or steam
- Highly humid or dusty locations



When the main unit surface is wet, wipe off before playing.
Playing on the wet surface can cause slip and fall accidents.



Use on the flat floor.
Using on the floor which is messy or deformed can cause injury or damage of this product.



Wear comfortable clothing and warm up before playing.
There is the risk of slip and fall accidents.



If this product is no longer necessary, observe the correct method of disposal.
This product is composed of metal, sponge, urethane, vinyl chloride, and plastic. When disposing of the product, comply with local government and other regulations which apply in the area where it is used.



Do not play with socks or shoes.
Playing with shoes can cause damage or malfunction of the main unit. Moreover, some material of them can cause slip and fall accidents.



Do not disassemble or modify the main unit.
There is the risk of injury, malfunction, or damage.



Do not step on or add power to the case part.
There is the risk of injury, malfunction, or damage.



Do not fold this product forcibly.
There is the risk of malfunction or damage.



Use caution when handling the USB cable.
There is the risk that the product may become unusable. Be sure to read the instructions for it and do not take the following actions.

- scratch
- modify
- forcibly bend
- twist
- heat
- place objects on it
- pull
- sandwich it between furniture etc.

Warranty policy

Konami Amusement, Inc. warrants to the original purchaser of this Konami product that the product is free from defects in materials and workmanship for a period of ninety (90) days from the date of purchase. This Konami product is sold "as is," without express or implied warranty of any kind, and Konami is not liable for any losses or damages of any kind resulting from use of this product. Konami agrees for a period of ninety (90) days to either repair or replace, at its option, free of charge, any Konami product, postage paid, with proof of date of purchase, at its Factory Service Center. This warranty is not applicable to normal wear and tear. This warranty shall not be applicable and shall be void if the defect in the Konami product has arisen through abuse, unreasonable use, mistreatment or neglect. THIS WARRANTY IS IN LIEU OF ALL OTHER WARRANTIES AND NO OTHER REPRESENTATIONS OR CLAIMS OF ANY NATURE SHALL BE BINDING ON OR OBLIGATE KONAMI. ANY IMPLIED WARRANTIES APPLICABLE TO THIS PRODUCT, INCLUDING WARRANTIES OF MERCHANTABILITY AND FITNESS FOR A PARTICULAR PURPOSE, ARE LIMITED TO THE NINETY (90) DAY PERIOD DESCRIBED ABOVE. IN NO EVENT WILL KONAMI BE LIABLE FOR ANY SPECIAL INCIDENTAL OR CONSEQUENTIAL DAMAGES RESULTING FROM POSSESSION, USE OR MALFUNCTION OF THIS KONAMI PRODUCT. KONAMI DISCLAIMS ANY AND ALL WARRANTIES, EXPRESS OR IMPLIED, THAT THIS PRODUCT WILL BE COMPATIBLE WITH ANY SOFTWARE PRODUCT NOT DEVELOPED OR PUBLISHED BY KONAMI.

Some states do not allow limitations as to how long an implied warranty lasts and / or exclusions or limitations of incidental or consequential damages so the above limitations and / or exclusions of liability may not apply to you. This warranty gives you specific rights, and you may also have other rights which vary from state to state.

Specifications

FCC CAUTION

Changes or modifications not expressly approved by the party responsible for compliance could void the user's authority to operate the equipment.

Note: This equipment has been tested and found to comply with the limits for a Class B digital device, pursuant to part 15 of the FCC Rules. These limits are designed to provide reasonable protection against harmful interference in a residential installation. This equipment generates, uses and can radiate radio frequency energy and, if not installed and used in accordance with the instructions, may cause harmful interference to radio communications. However, there is no guarantee that interference will not occur in a particular installation.

If this equipment does cause harmful interference to radio or television reception, which can be determined by turning the equipment off and on, the user is encouraged to try to correct the interference by one or more of the following measures:

- Reorient or relocate the receiving antenna.
- Increase the separation between the equipment and receiver.
- Connect the equipment into an outlet on a circuit different from that to which the receiver is connected.
- Consult the dealer or an experienced radio / TV technician for help.

This equipment complies with FCC radiation exposure limits set forth for an uncontrolled environment. End user must follow the specific operating instructions for satisfying RF exposure compliance. This transmitter must not be collocated or operating in conjunction with any other antenna or transmitter. The portable device is designed to meet the requirements for exposure to radio waves established by the Federal Communications Commission (USA). This device complies with Part 15 of the FCC Rules. Operation is subject to the following two conditions: (1) This device may not cause harmful interference, and (2) this device must accept any interference received, including interference that may cause undesired operation.

CONFORMS TO THE SAFETY REQUIREMENTS OF ASTM F963.

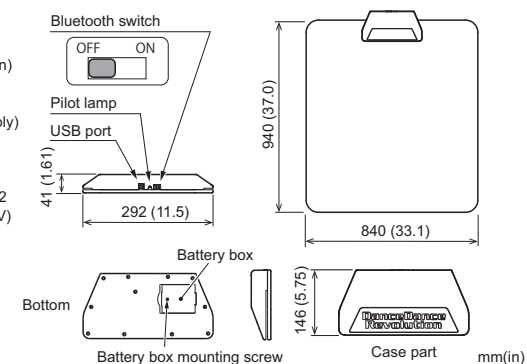
Weight (excluding batteries)	Approx. 2 kg / 4.41 lb
Service environment temperature	5–35°C (41–95°F)
Service environment humidity	35–70% (without condensation)

- USB connection
 - Rated voltage 5 V DC (USB bus power supply)
 - Rated current consumption 100 mA
- Bluetooth connection
 - Communication mode / class Low Energy Ver 5.0 / Class 2
 - Batteries used 3 x AA dry-cell batteries (1.5 V)

Accessory

- Instruction manual (this manual): 1

* The USB cable and batteries are not attached.



- The Bluetooth® word mark and logos are registered trademarks owned by Bluetooth SIG, Inc. and are used here under license.
- Android is a trademark of Google LLC.
- iPhone is a registered trademark of Apple Inc. in the United States and other countries.
- The trademark "iPhone" is used in Japan with a license from iPhone K.K.
- iOS is the name of an OS from Apple Inc. iOS is a trademark or registered trademark of Cisco Systems, Inc. in the United States and other countries, and is used here under license.
- Other trademarks and registered trademarks are trademarks or registered trademarks of their respective owners.

CUSTOMER SUPPORT
Please contact the sales site.

Development and manufacture Konami Amusement Co., Ltd.