

MQ-01B-1 20210617

Shenzhen MUQI
Electronic Acoustic Co., Ltd

ANC TWS Bluetooth Earbuds

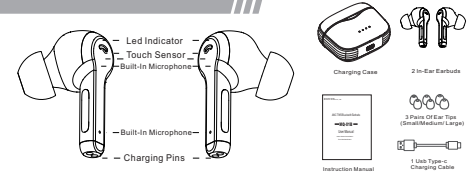
MQ-01B

User Manual

Active Noise Cancellation
True Wireless Stereo

Changes or modifications not expressly approved by the party responsible for compliance could void the user's authority to operate the equipment.

Product Information

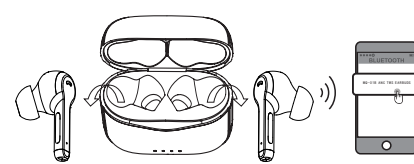


Specifications

Pairing Device	MQ-01B ANC TWS EARBUDS
Bluetooth Version	Version 5.2
Battery Capacity	50 mAh (Per Earbud) 380 mAh (Charging Case)
Earbuds Play Time	8 Hours (ANC Disabled) 7 Hours (ANC Enabled)
Earbuds Call Time	7 Hours (ANC Disabled) 6 Hours (ANC Enabled)
Overall Operating Time (Earbuds + Charging Case)	30 Hours
Time To Charge Earbuds	1.5 Hours
Time To Charge Charging Case	2 Hours
Standby Time	360 Days
Charging Port	USB Type-c

1

Power On & Pairing Instructions



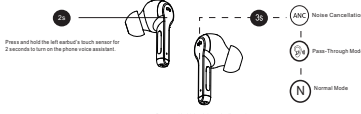
- Open the lid of the charging case. The green LED will be on for 1 second. The earbuds are turned on. The red and green LEDs will flash alternately. This indicates that the left and right earbuds are pairing. The left and right earbuds are paired successfully when a slow green flash (once every 3 seconds) is seen.
- Remove the earbuds from the charging case. Turn on your device's Bluetooth function. Search for and select MQ-01B ANC TWS EARBUDS. You will hear the word "Connected".
- After the first connection is successful, the earbuds will automatically reconnect to your phone whenever you open the lid of the charging case in the future.
- When the earbuds are placed outside the charging case without connecting to a device (such as a phone) for more than 5 minutes, the earbuds will automatically shut down. Should this happen, the earbuds can be turned back on by touching the sensor for 2 seconds.

NOTE:

- For user convenience, the left and right earbuds are paired when the product is shipped from the factory.
- The left and right earbuds can be used separately. Disabling one earbud does not affect the other. Each earbud can be paired with a device such as a mobile phone when it is removed from the charging case. During protracted use, when you remove the other earbud (already paired) from the charging case, the left and right earbuds automatically pair and seamlessly connect to the device reaching bilateral mode within 2 seconds.
- If the left and right earbuds are not paired when you remove them from the charging case, you can clear the connection between the earbuds and the device by following the steps on page 7. To Disconnect the Bluetooth Pairing; Then re-pair the left and right earbuds.

2

Operating Instructions



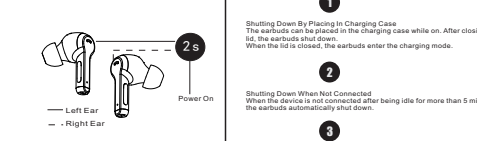
Change Operating Modes:

Operation	Mode	Tone
Press and hold the right earbud's multifunction touch sensor for 3 seconds (The default mode is Normal mode)	Noise Cancellation Mode	"ANC On"
	Pass-Through Mode	"Pass Through"
	Normal Mode	"ANC Off"

Enable and Disable Voice Assistant Function:

- When both earbuds are in use, press and hold the left earbud for 2 seconds until a tone is heard to enable the voice assistant. Press and hold the same earbud for 2 seconds until a tone is heard to disable the voice assistant.
- When only one earbud is in use, press and hold either the left or right earbud for 2 seconds until a tone is heard to enable the voice assistant. Press and hold either the left or right earbud for 2 seconds until a tone is heard to disable the voice assistant.

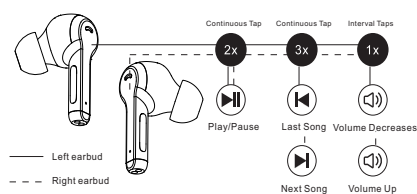
Several Shutdown Modes



- For user convenience, the left and right earbuds are paired when the product is shipped from the factory.
- The left and right earbuds can be used separately. Disabling one earbud does not affect the other. Each earbud can be paired with a device such as a mobile phone when it is removed from the charging case. During protracted use, when you remove the other earbud (already paired) from the charging case, the left and right earbuds automatically pair and seamlessly connect to the device reaching bilateral mode within 2 seconds.
- If the left and right earbuds are not paired when you remove them from the charging case, you can clear the connection between the earbuds and the device by following the steps on page 7. To Disconnect the Bluetooth Pairing; Then re-pair the left and right earbuds.

3

Volume Control



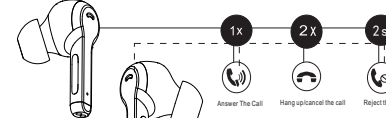
Play

Quickly tap the left/right earbud's touch sensor twice	Play/Pause
Tap the right earbud's touch sensor once during playback (16 intermittent touches from minimum to maximum volume). When the volume reaches maximum, a tone will be heard. The volume will no longer increase.	Volume +
Tap the right earbud's touch sensor once during playback (16 intermittent touches from minimum to maximum volume). When the volume reaches maximum, a tone will be heard. The volume will no longer increase.	Volume -
Quickly tap the right earbud's touch sensor three times	Last Song
Quickly tap the left earbud's touch sensor three times	Next Song

TIP: When the earbuds cannot be heard, check to see if the phone is at minimum volume or muted.

4

Call Instructions



Call Instructions

Tap left/right earbud's touch sensor	To answer the call
Quickly tap the left/right earbud's touch sensor twice	To hang up the call
Quickly tap the left/right touch sensor twice	To cancel the call
Press and hold the left/right earbuds' touch sensor for 2 seconds	To reject the call

Charging LEDs on the charging case

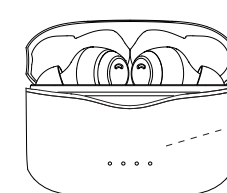
NOTE: When charging the charging case, the corresponding LEDs flash according to the charge level. When fully charged, all LEDs light up.

75-100% Battery Capacity	The fourth LED flashes once per second. The first three are solid
51-75% Battery Capacity	The third LED flashes once per second. The first two are solid
26-50% Battery Capacity	The second LED flashes once per second. The first one is solid
0-25% Battery Capacity	The first LED flashes once per second

To charge the charging case, use the included Type-C USB Cable.

5

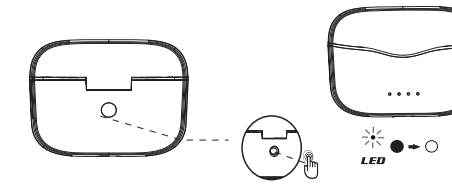
Earbud Charge Status



- Earbud Charging: Placing the earbuds back in the charging case automatically charges the earbuds. If you see a solid red light on the earbuds when you open the cover of the charging case, the earbuds are being charged.
- When the charging case charges the earbuds, the lights on the charging case go on for 5 seconds and turn off.
- The charging case should be charged if it loses its power. Otherwise the charging case lid will not be able to control the connection between the earbuds and the connected device. If the earbuds are placed in a powerless charging case, the Bluetooth connection between the earbuds and the device will remain.

6

Battery Display / Disconnect Pairing



Charging Case Power Indicator

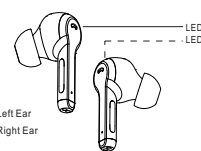
- When the charging case lid is open/closed, pressing the button on the back of the case or opening the lid will cause the LED on the charging case to illuminate to indicate the remaining power. For example, three lit LEDs indicates 75% charge.

To Disconnect the Bluetooth Pairing:

- Place the earbuds in the charging case and leave the charging case lid open. Press and hold the button on the back of the charging case for 3 seconds until the white LED flashes. The earbuds will disconnect from the phone.
- Press and hold the case button for 8 seconds to re-connect the left and right earbuds.

7

Earbud LED Indicator



Earbud LED Indicators

Open the charging case lid to power on the earbuds	The green LED lights up for one second, and the red and green LED will flash alternately as pairing the earbuds.
Power off the system	The red LED lights up for 1 second and turns off.
Open the charging case lid for Bluetooth pairing	Left and right earbud light flash red and green (1 second flash)
Connect your phone/device	Connection successful: Slow blinking green LED (every 3 seconds)
Call	The green light flashes intermittently
Low power alarm	The earbud LED flashes red
Charging earbuds	The earbud's LED is solid red
Hang up/reject	Switch to slow blinking green (every 3 seconds)



NOTE: This equipment has been tested and found to comply with the limits for a Class B digital device, pursuant to part 15 of the FCC Rules. These limits are designed to provide reasonable protection against harmful interference in a residential installation. This equipment generates, uses and can radiate radio frequency energy and, if not installed and used in accordance with the instructions, may cause harmful interference to radio communications. However, there is no guarantee that interference will not occur in a particular installation. If the equipment does cause harmful interference to radio or television reception, which can be determined by turning the equipment off and on, the user is encouraged to try to correct the interference by one or more of the following measures:

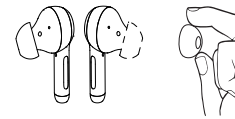
- Reorient or relocate the receiving antenna.
- Increase the separation between the equipment and receiver.
- Connect the equipment into an outlet on a circuit different from that to which the receiver is connected.
- Consult the dealer or an experienced radio/TV technician for help.

This device complies with Part 15 of the FCC Rules. Operation is subject to the following two conditions:

- (1) This device may not cause harmful interference, and
- (2) This device must accept any interference received, including interference that may cause undesired operation.

8

Final Notes



- Please select the appropriate sized ear tips and adjust them fit for optimal noise reduction and sound quality.
 - Prolonged exposure to excessive volume may damage your hearing. Adjust the volume as low as possible before listening, and then adjust it to the appropriate level.
 - Do not use these earbuds while driving or cycling.
 - Keep earbuds away from sharp objects, uneven surfaces, metal parts, and anything that could damage them.
 - Modification, repair, and disassembly of the product without professional guidance is prohibited.
 - Do not clean the earbuds with corrosive or vapor fluids.
 - Do not use the earbuds in hazardous environments.
 - The earbuds contain small parts that could cause a choking hazard. Make sure the earbuds are kept away from children and pets to prevent accidents.
9. Battery Warning:
- Incorrect use of the battery can result in fire and chemical combustion. The battery may explode if damaged.
 - Dispose of the battery according to local regulations. Recycle as much as possible. It is prohibited to dispose of the earbuds as normal household waste or to dispose of them in a fire to avoid pollution or explosion.

9