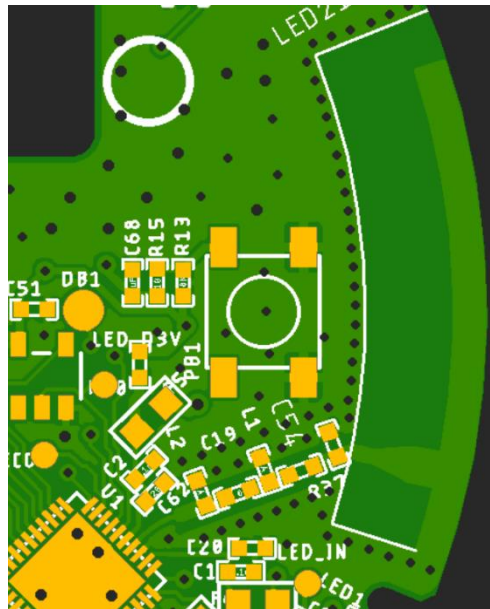


The GX Smart Cap uses a specially designed printed antenna.



Frequency Range: 2400-2485 MHz
Type of antenna: printed, internal
Antenna Gain: 2.11dBi
Model: VC3_R8

Designed by:

Phillip Lindsey,

ARSI, LLC

Antenna & RF System Integrators

phil@arsiconsultants.com

VC3_R8_optimum1

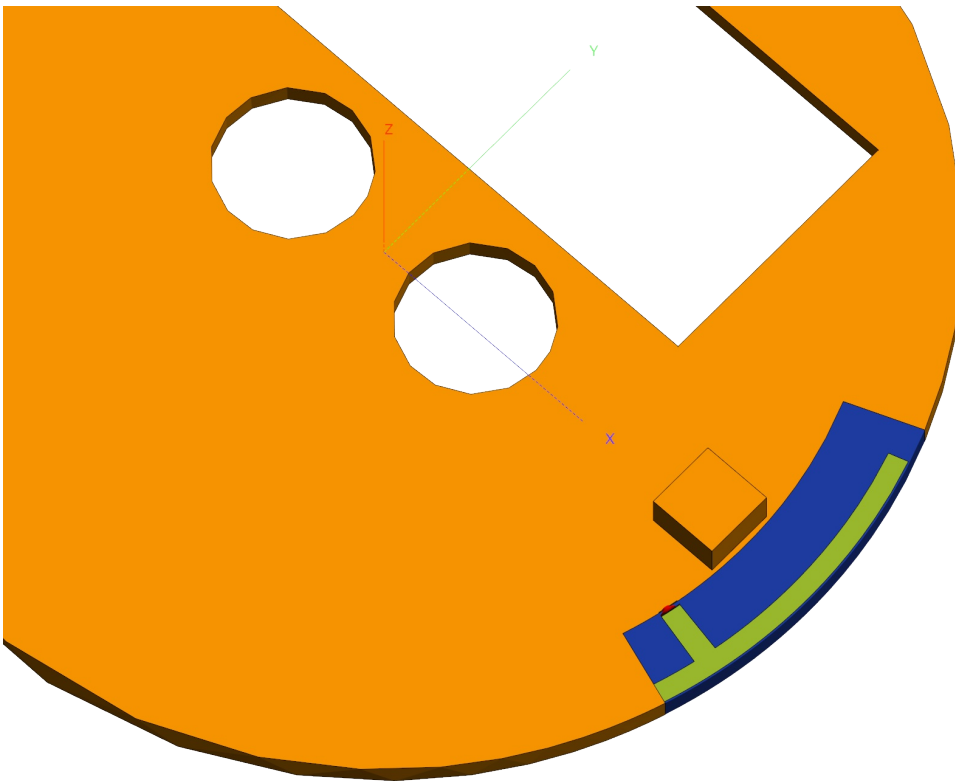


Figure 1: 3D View

Excitation

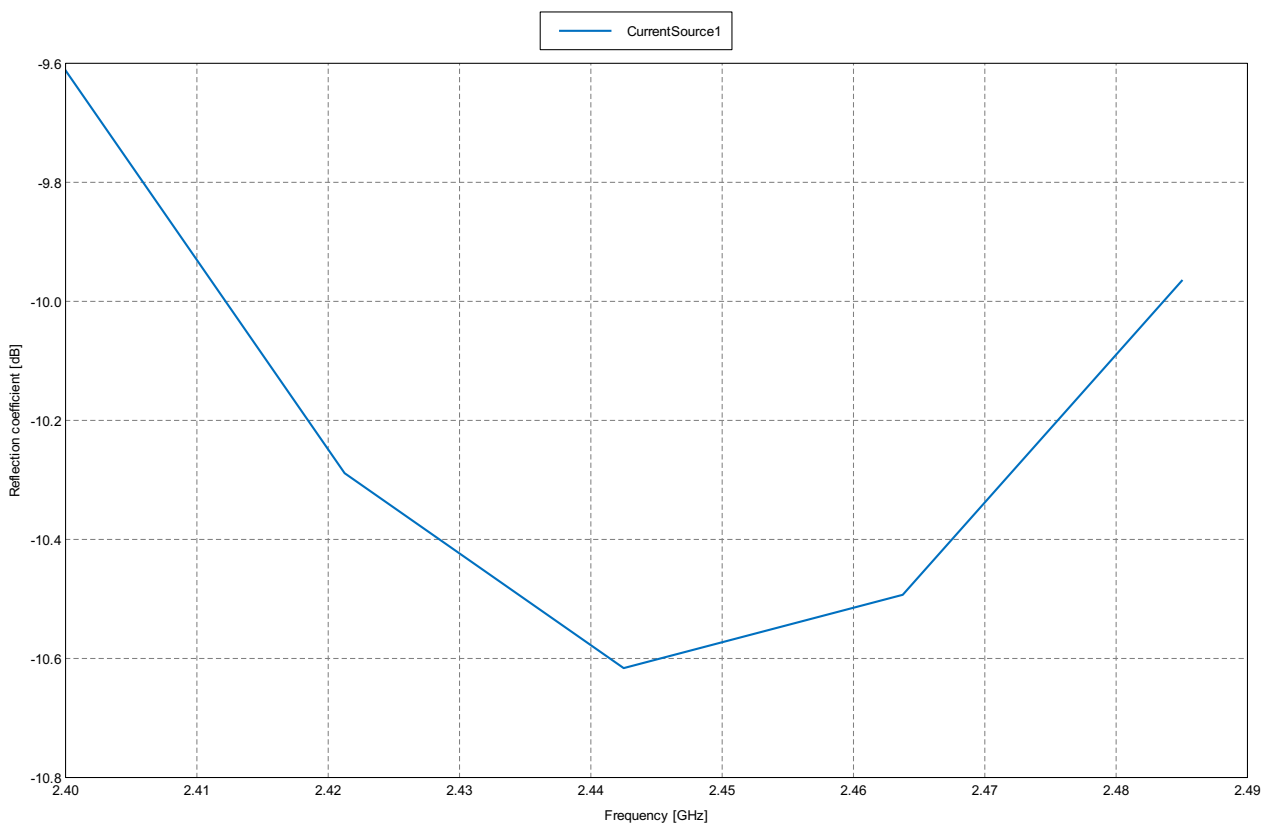


Figure 2: Reflection coefficient Magnitude [dB] - VC3_R8_optimum

Excitation

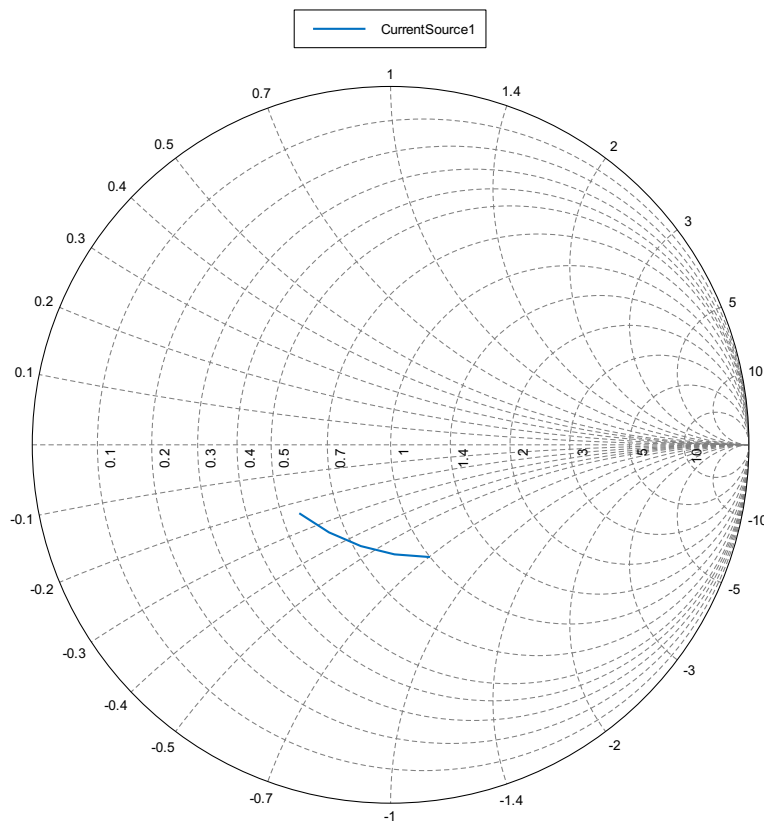


Figure 3: Impedance - VC3_R8_optimum

Power

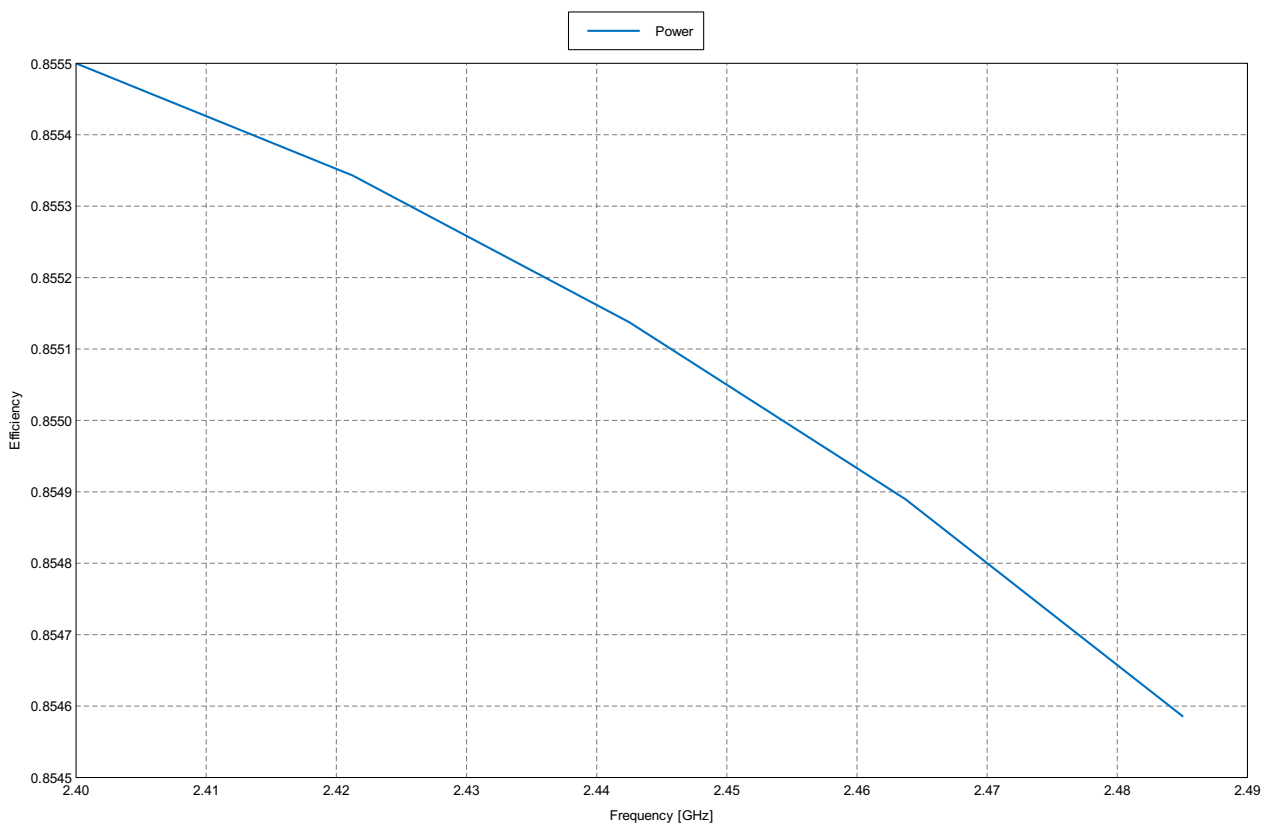


Figure 4: Efficiency - VC3_R8_optimum

VC3_R8_optimum1_1

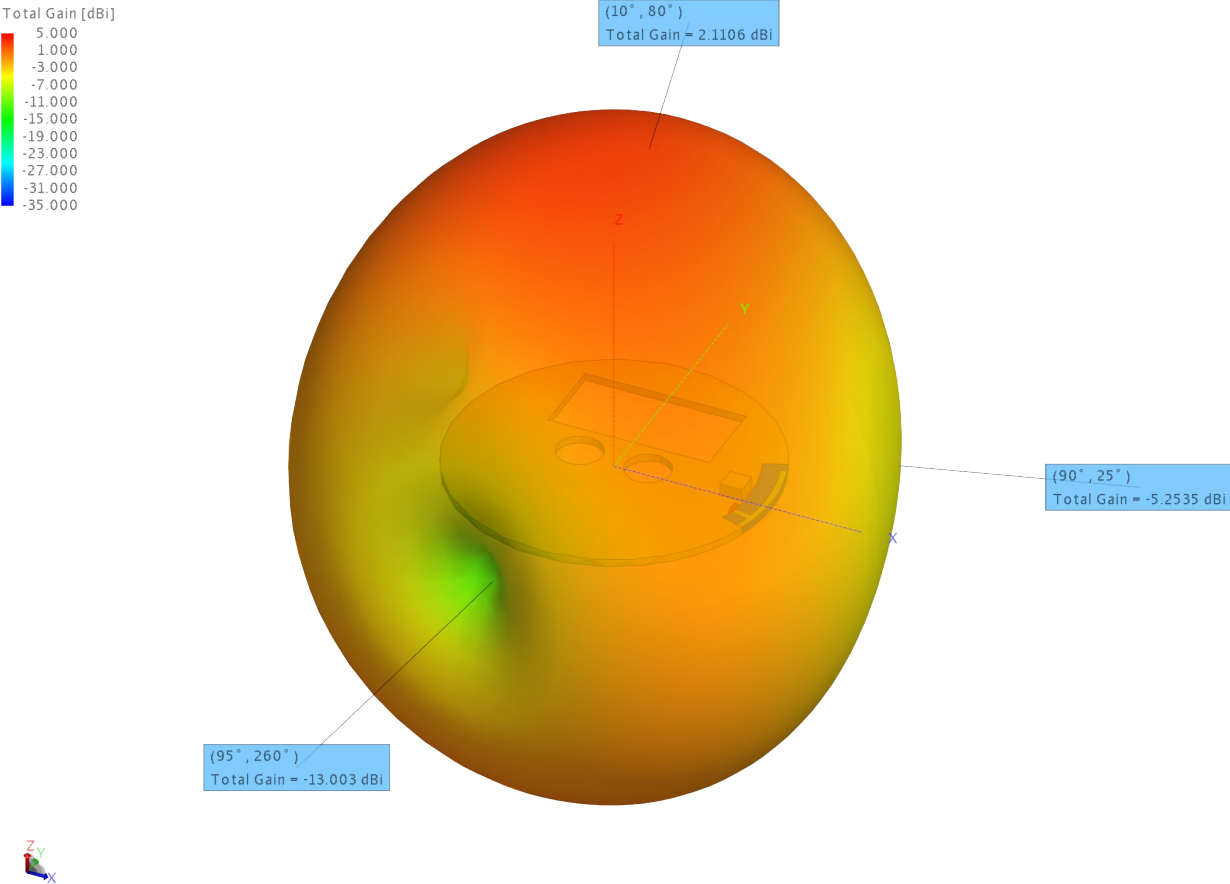


Figure 5: 3D View

Far field

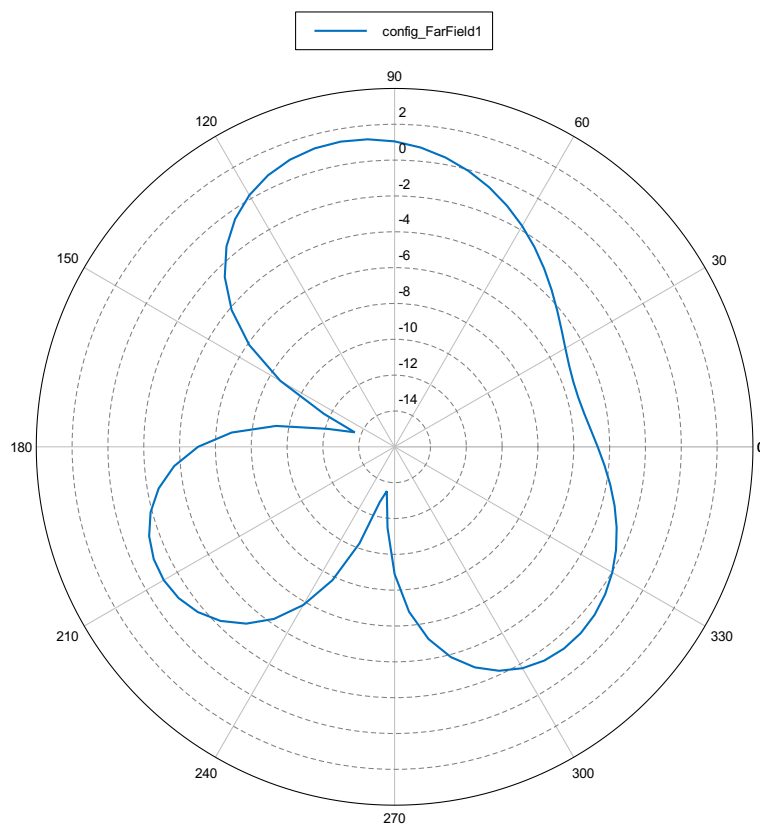


Figure 6: Total Gain [dBi] (Frequency = 2.4425 GHz; Theta = 90 deg) - VC3_R8_optimum