

规格承认书

Specification For Approval

规格描述: IPEX-2.4G PCB ANT-113 Gray-L125MM

Part name

飞宇信料号: 3.03.0101000914

Part No

客户料号: _____

Customer Part No

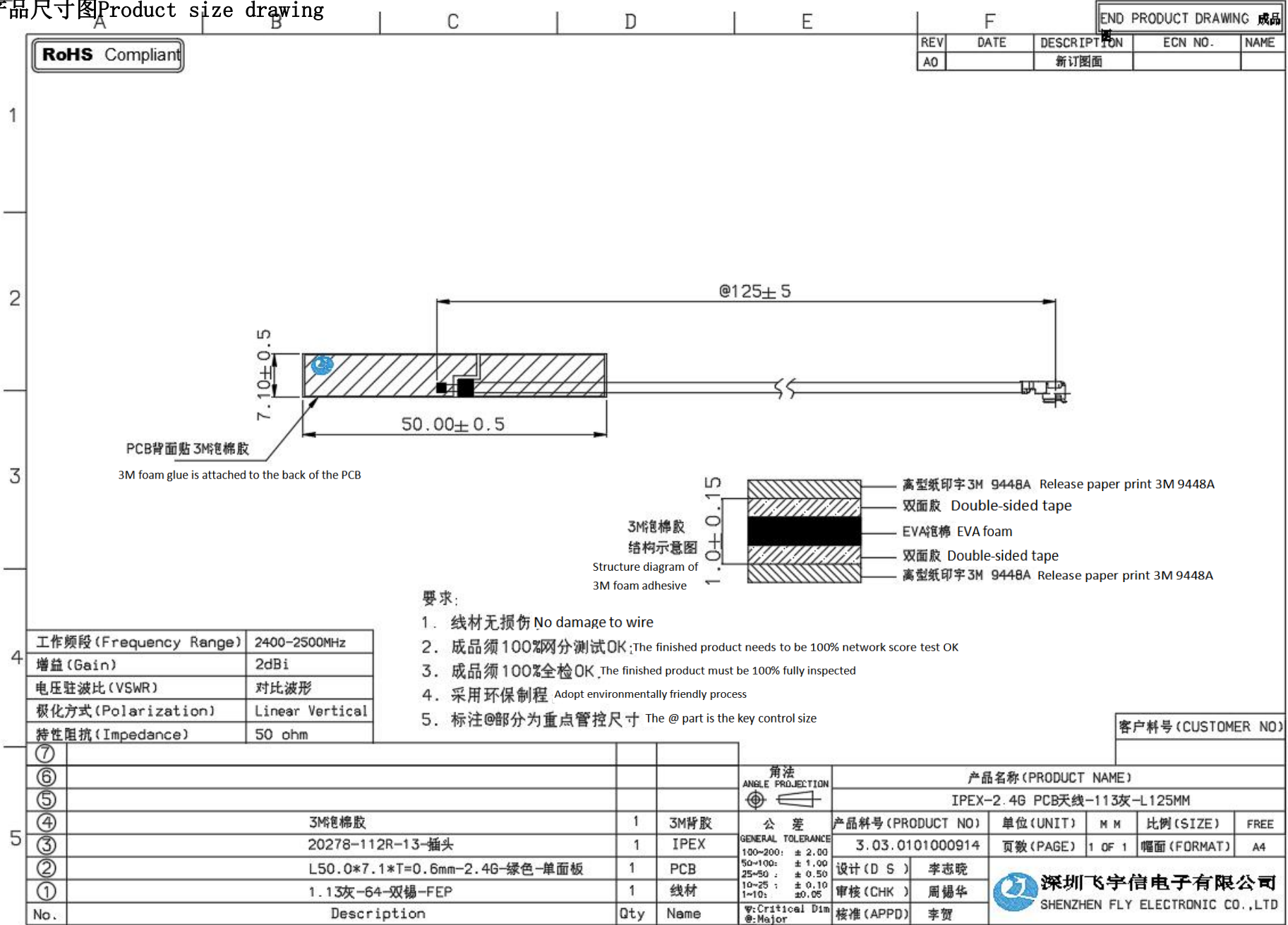
客户确认 Customer confirmation		
确认 Confirmation	核实 check	批准 Approver

制造厂商承认 Manufacturer recognition			
销售代表 Sales	拟制 Drafters	核实 check	批准 Approver

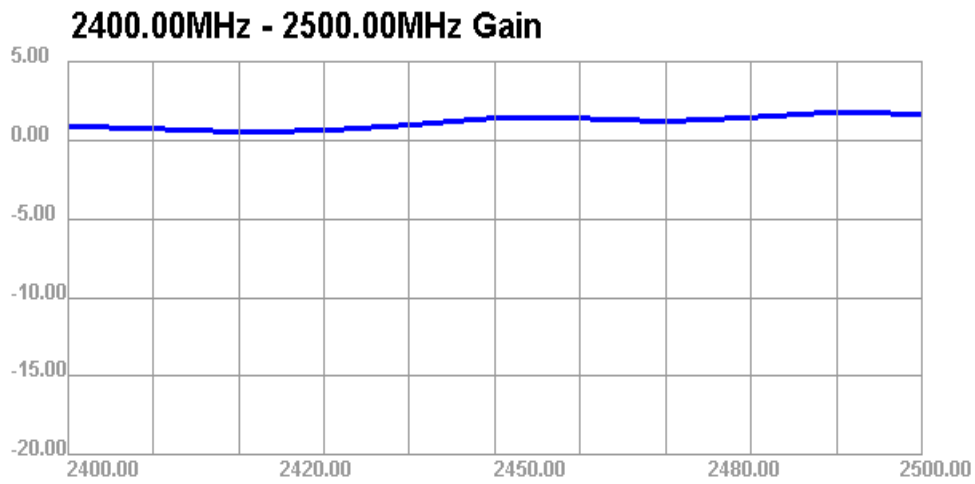
感谢给予敝公司送样承认之机会. 如惠蒙承认通过, 烦请将此表签回敝公司.

Thank you for giving us the chance to approve samples. If you agree to pass it, please kindly send it back to us.

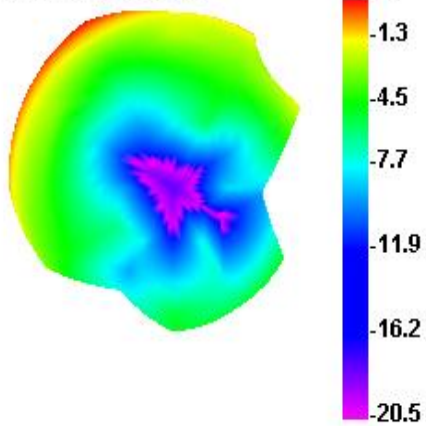
1. 产品尺寸图 Product size drawing



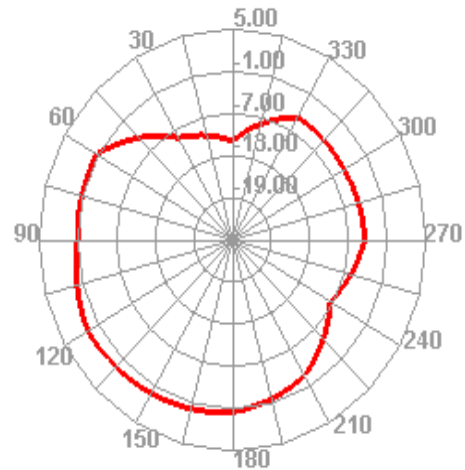
Passive Test For 2400-2500			
Freq (MHz)	Effi (%)	Effi (dB)	Gain (dBi)
2400	44.68	-4.6	0.88
2410	43.96	-4.69	0.72
2420	43.68	-4.73	0.52
2430	45.59	-4.49	0.61
2440	45.89	-3.88	0.96
2450	45.64	-3.41	1.41
2460	48.12	-3.18	1.39
2470	45.5	-3.42	1.19
2480	50.16	-3	1.44
2490	51.74	-2.86	1.79
2500	50.99	-2.92	1.64



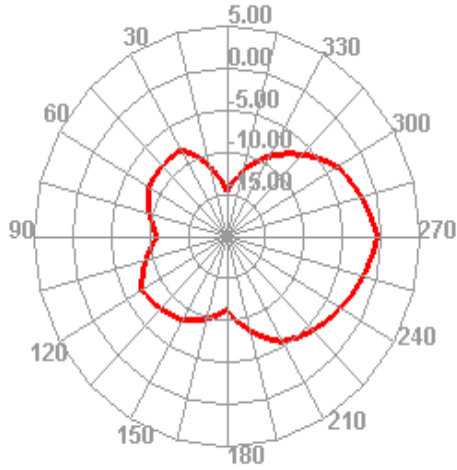
2400.000MHz



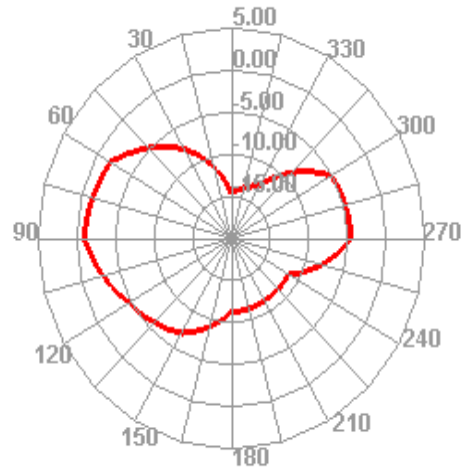
2400.000MHz H



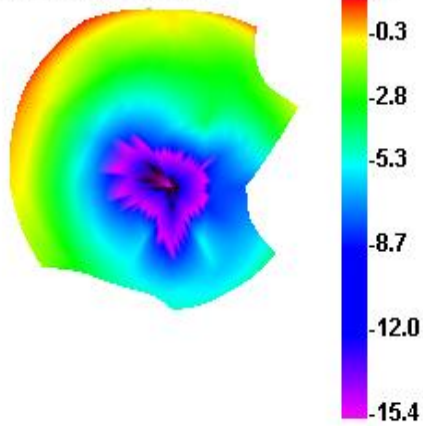
2400.000MHz E1



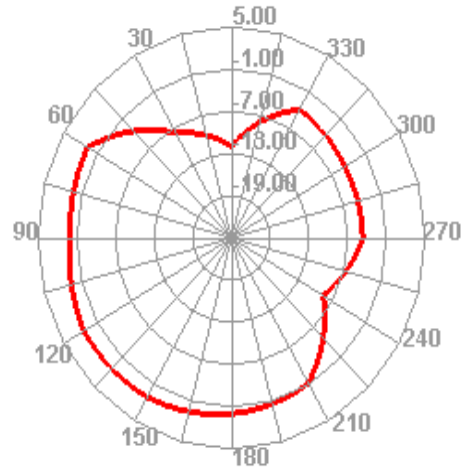
2400.000MHz E2



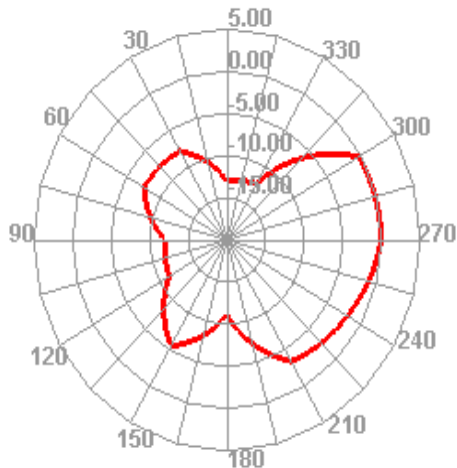
2450.000MHz



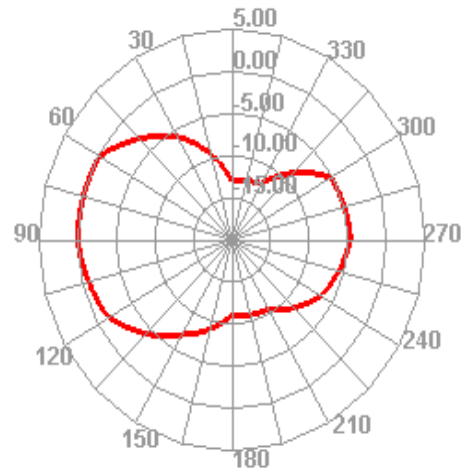
2450.000MHz H



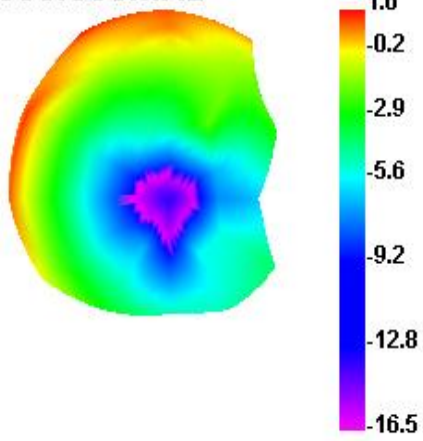
2450.000MHz E1



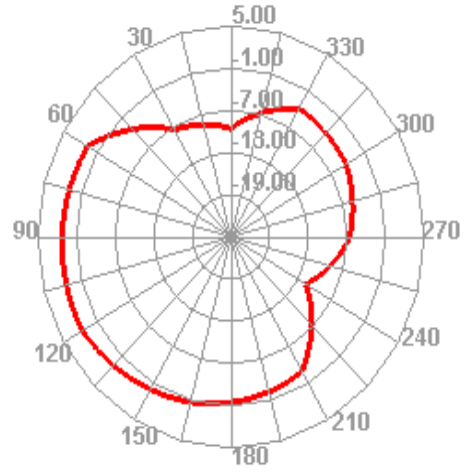
2450.000MHz E2



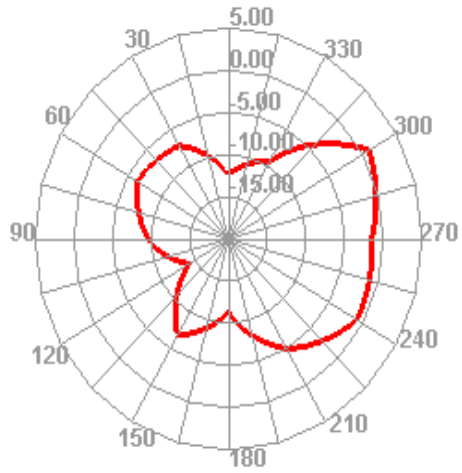
2500.000MHz



2500.000MHz H



2500.000MHz E1



2500.000MHz E2

