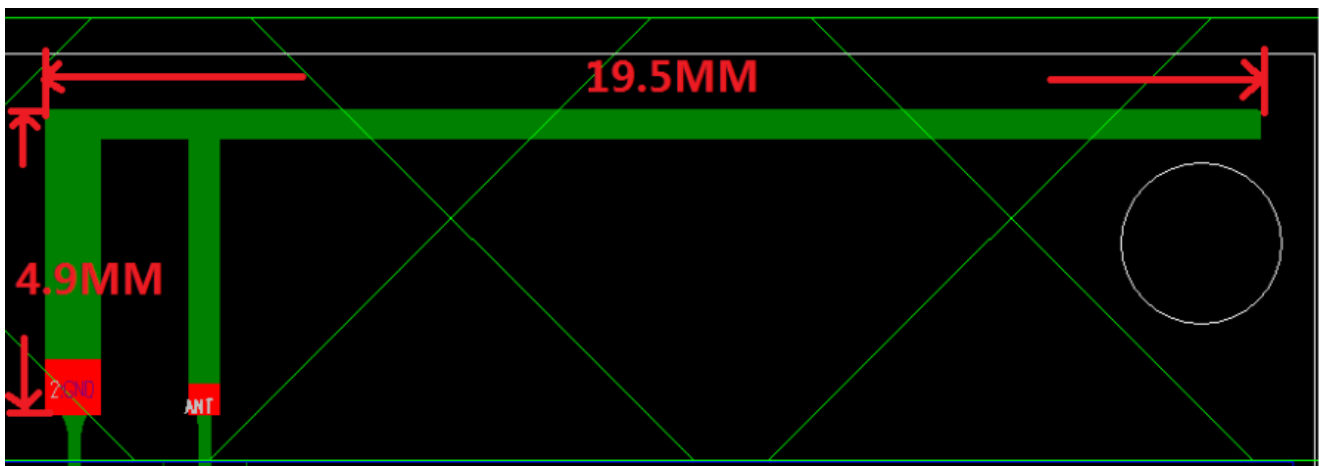


天线性能测试规格书

Applications

- ※Bluetooth Home RF
- ※ISM band 2.4GHz applications

1. Dimensions



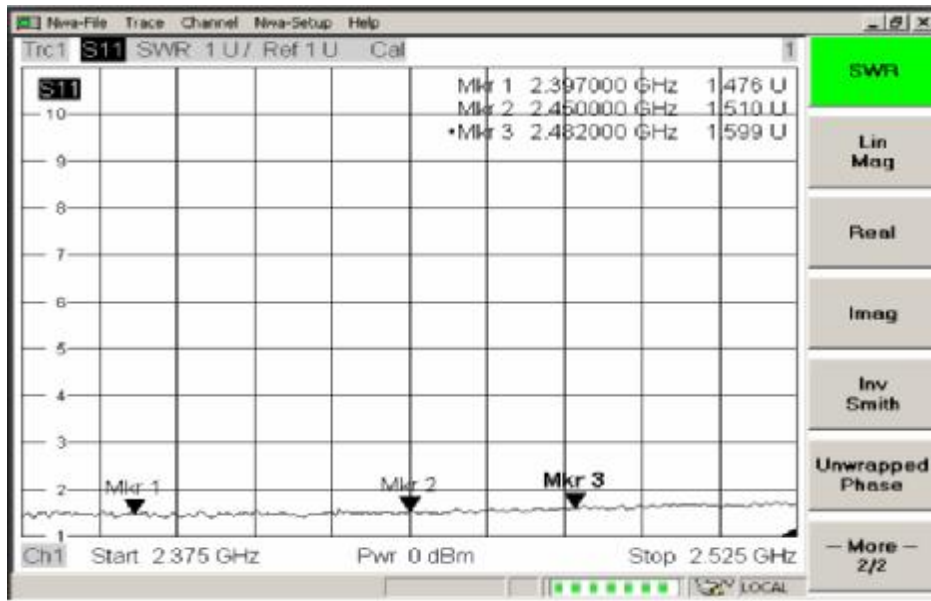
2. Specifications

number	Item	Specifications
1	Working Central Frequency	2441 MHz
2	Band Width	(2402-2480)MHz
3	Gain	0dBi
4	VSWR	≤2.0
5	Antenna type	PCB antenna
6	Azimuth Beam width	Omni - directional
7	Impedance	50 欧姆
8	Modulation mode	GFSK

3. 仪器测试、软件仿真参数

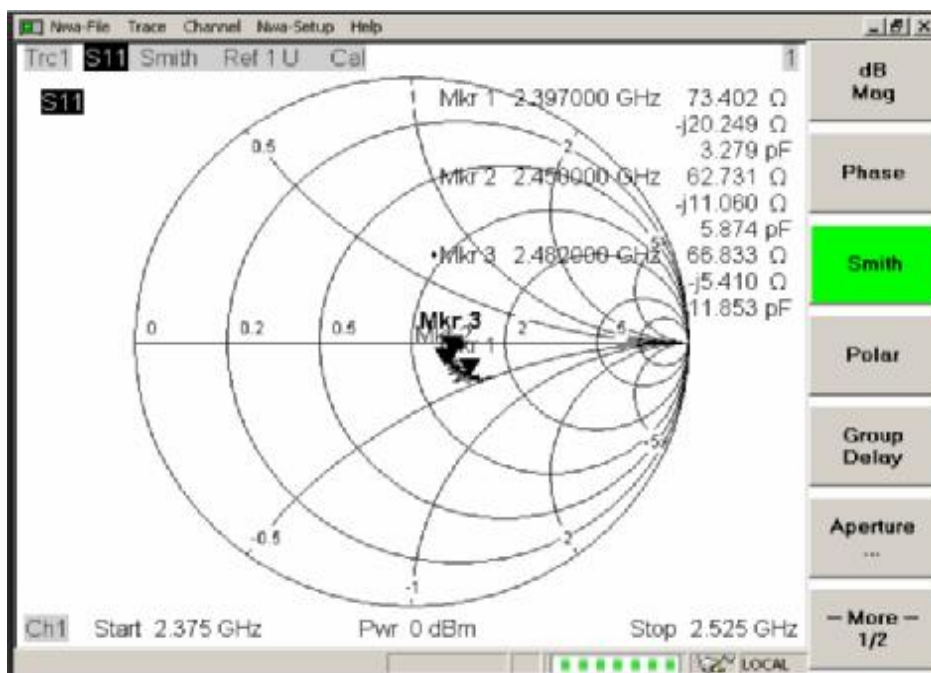
① VSWR

Mkr1: 2397MHz 1.47 Mkr2: 2450MHz 1.51 Mkr3: 2482 MHz 1.59



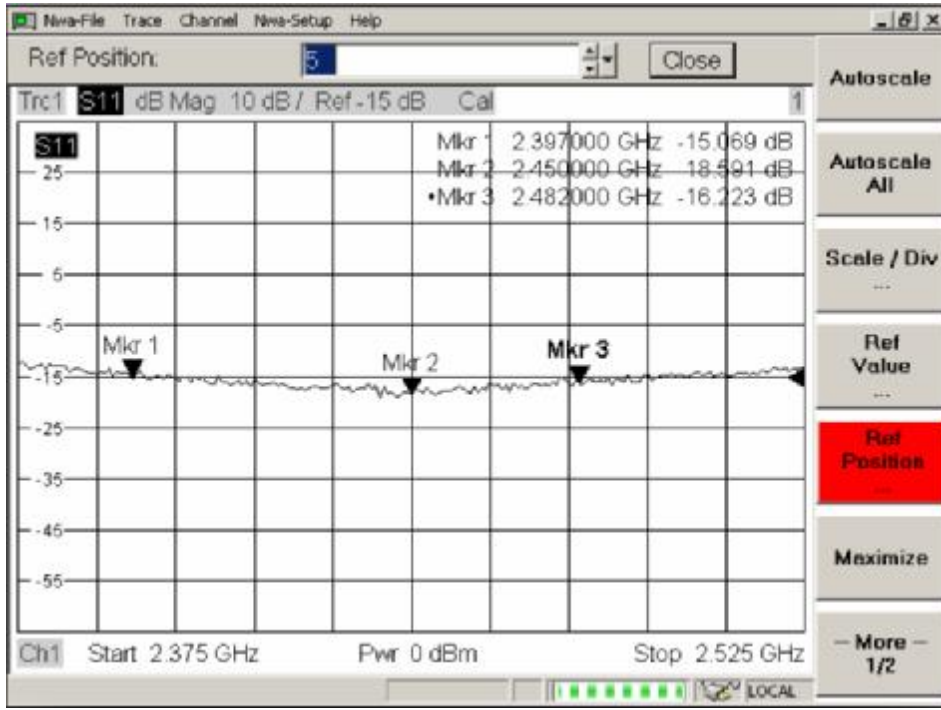
② Smith Char

Mkr1: 2397MHz 73.4 Mkr2: 2450MHz 62.7 Mkr3: 2482MHz 66.8



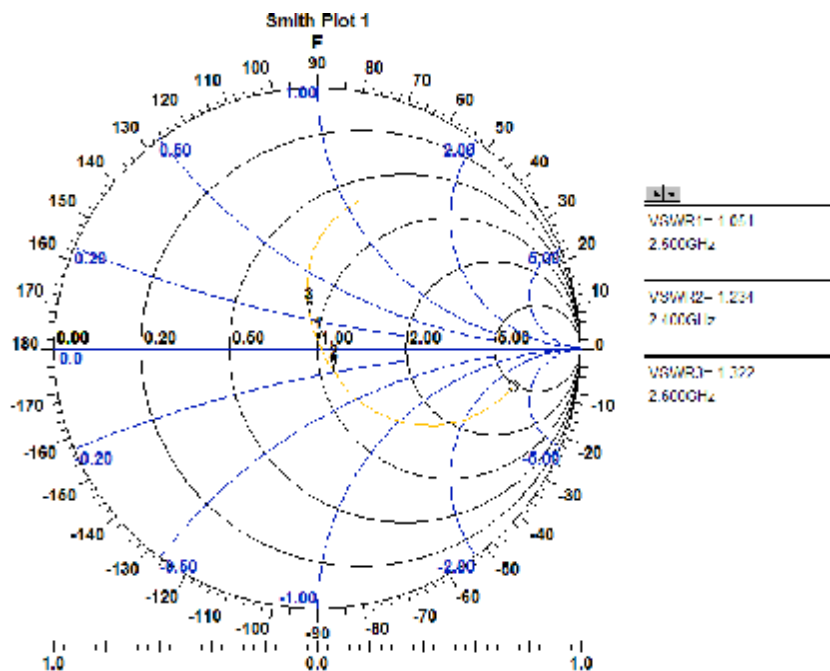
③ Return Loss

Mkr1: 2397MHz -15 Mkr2: 2450MHz -18 Mkr3: 2482 MHz -16



④ Smith Char 仿真

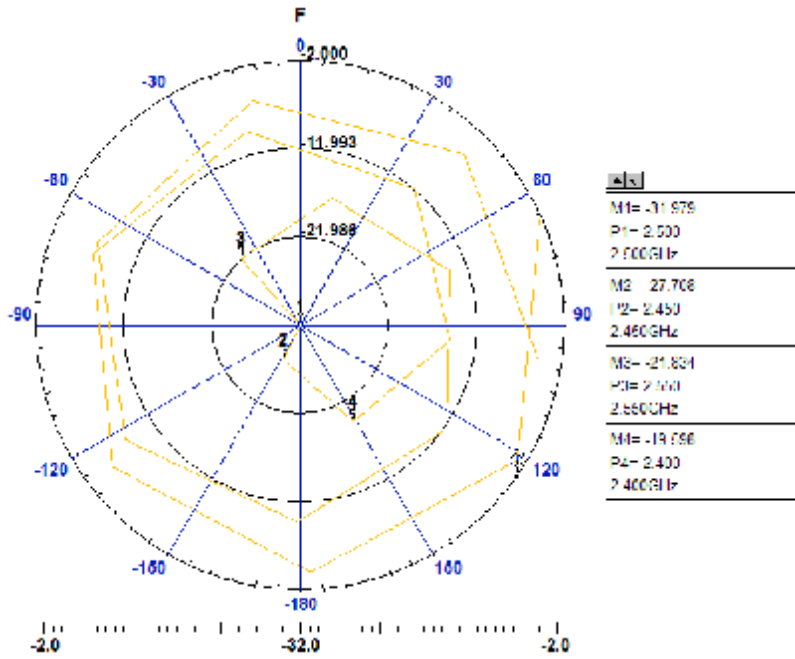
Mkr1: 2400MHz 1.234 Mkr2: 2500MHz 1.051 Mkr3: 2600MHz 1.322



⑤ Return Loss 仿真

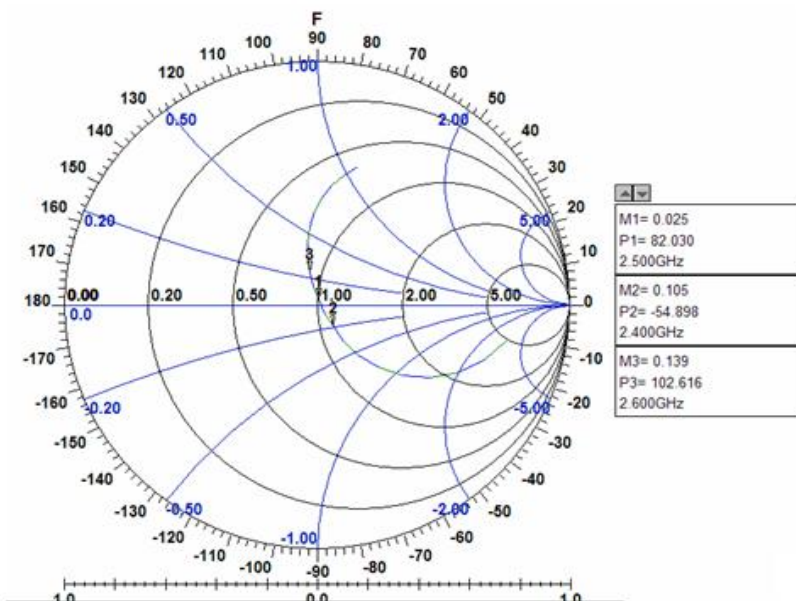
Mkr1: 2400MHz -19.59 Mkr2: 2450MHz -27.70 Mkr3: 2500MHz -31.97

Mkr4: 2550MHz -21.83



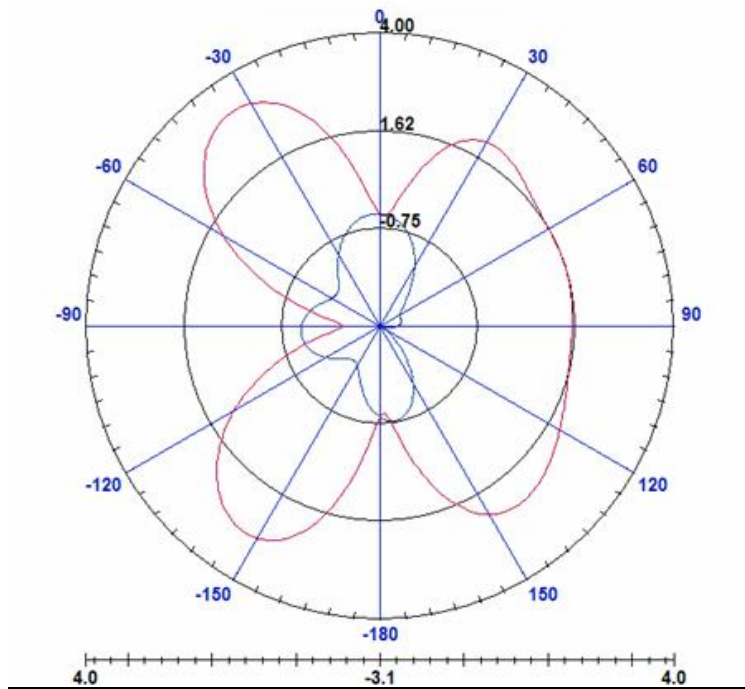
⑥ Phase 仿真

Mkr1: 2400MHz -54.89 Mkr2: 2500MHz -82.03 Mkr3: 2600MHz -102.6

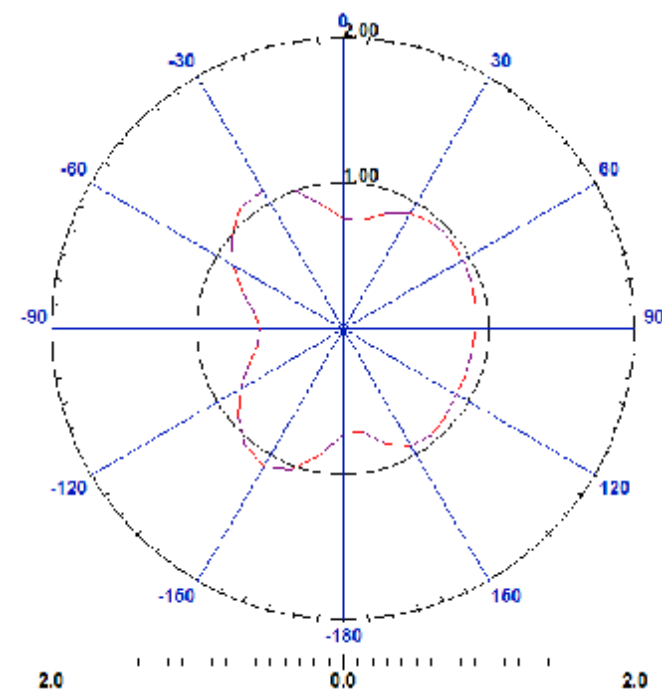


4. Radiation Patterns

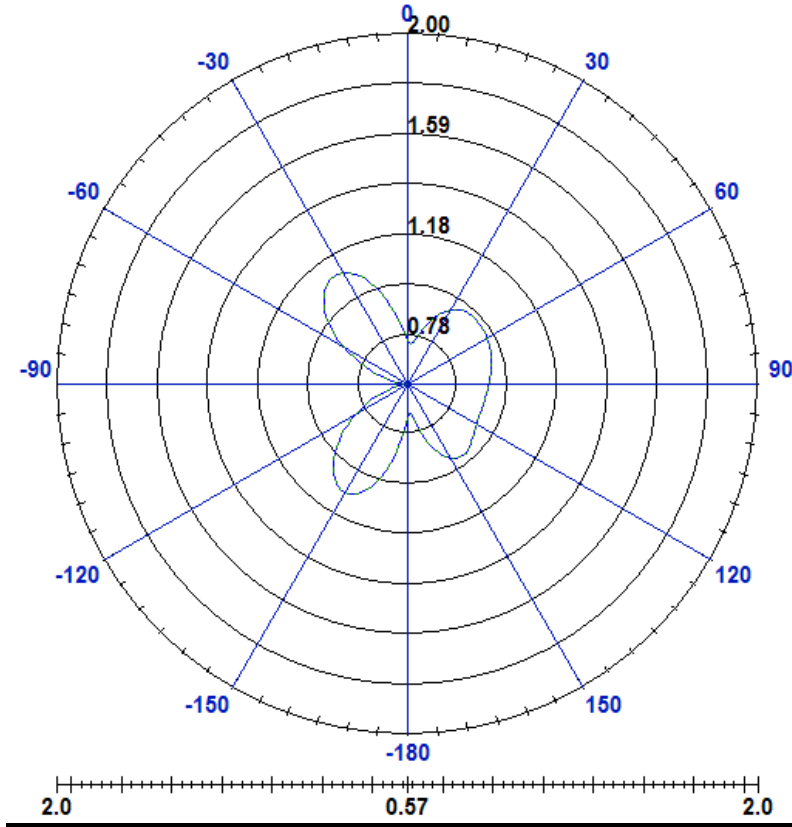
XY-plane



XZ-plane



YZ-plane



3D 辐射场型图

