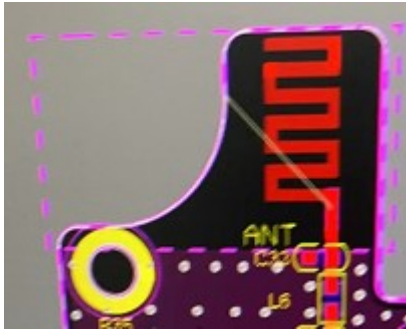


Product specification

1.Type of antenna

(Antenna module on the system board)

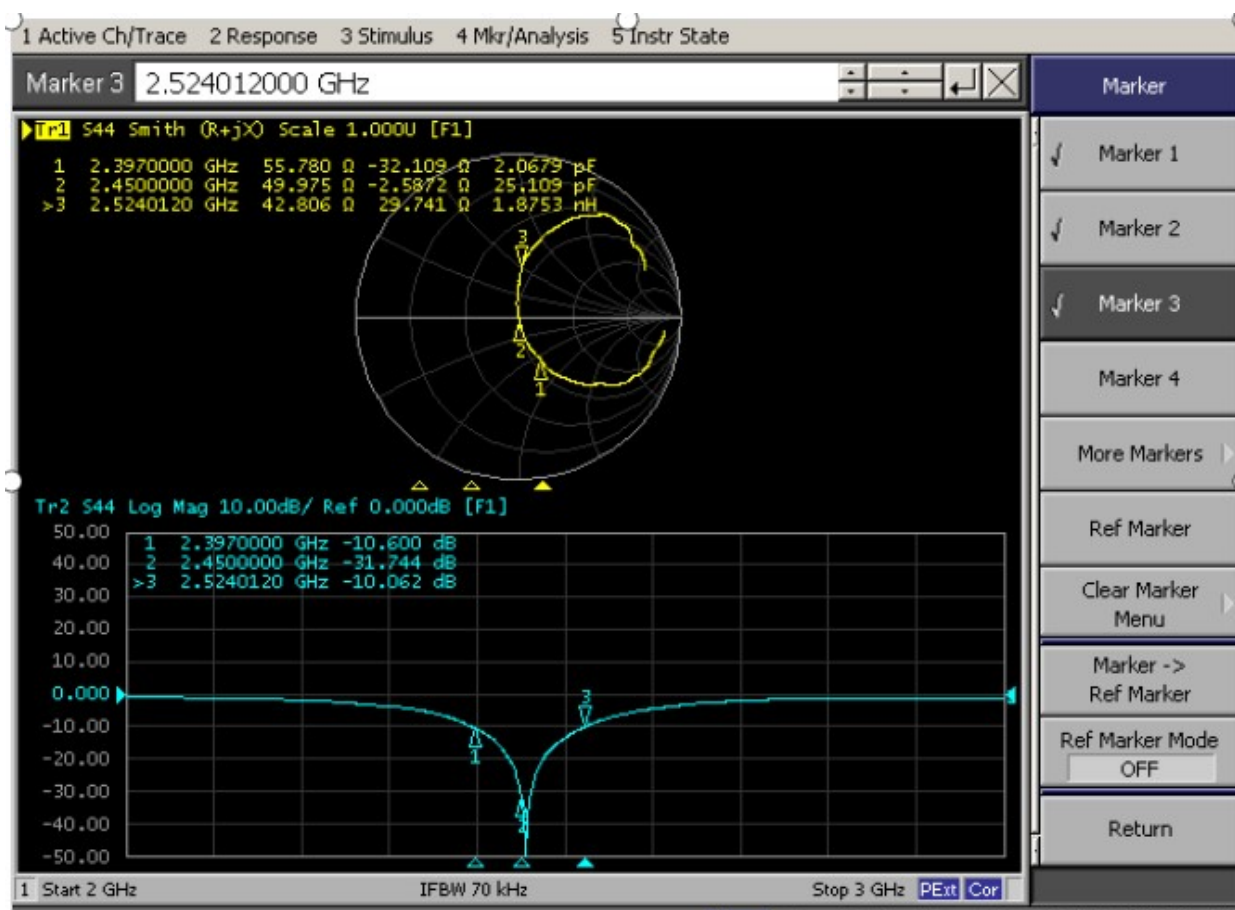


2.Electrical Characteristics

No.	Item	Specifications
1	Frequenc Range	2400 ~ 2500MHz
2	Band Width	100MHz typ.
3	Peak Gain	5.19 dBi
4	V.S.W.R	≤ 2.0
5	Polarization	Linear
6	Azimuth Beam width	Omni-directional
7	Impedance	50 Ω

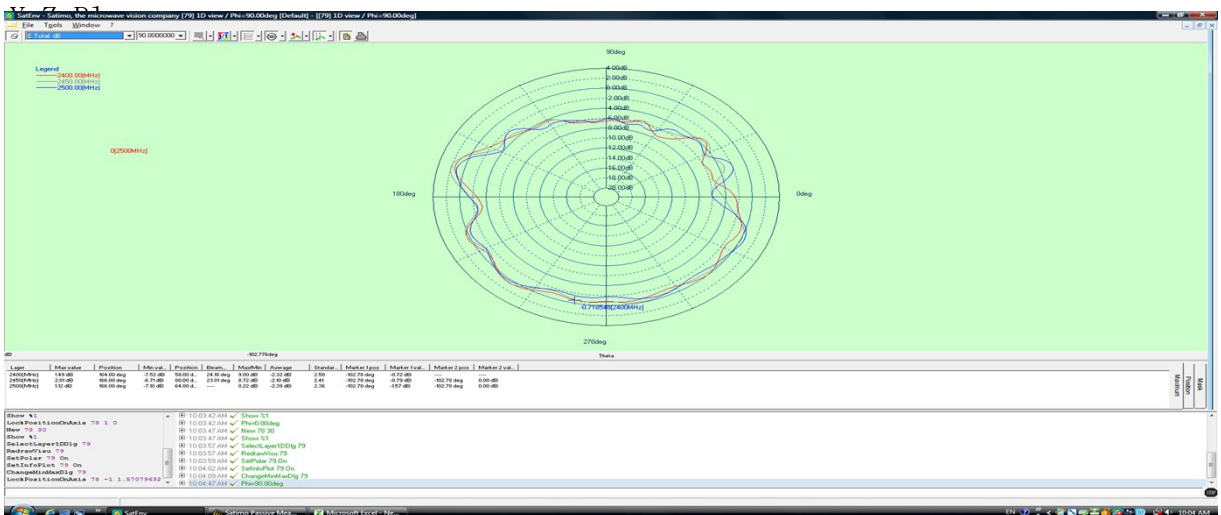
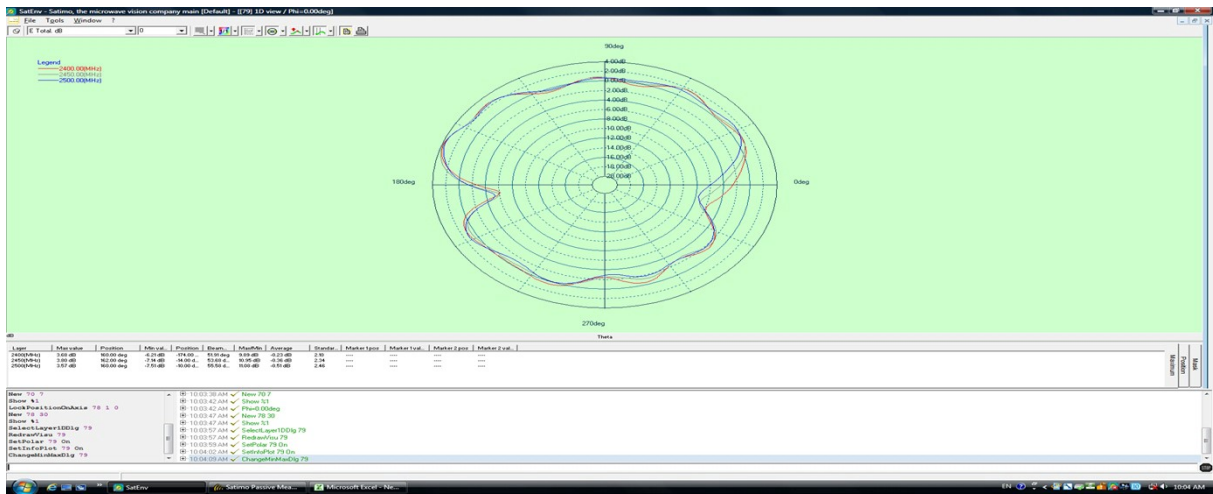
All the technical data and information contained herein are subject to change without prior notice

3.Return Loss

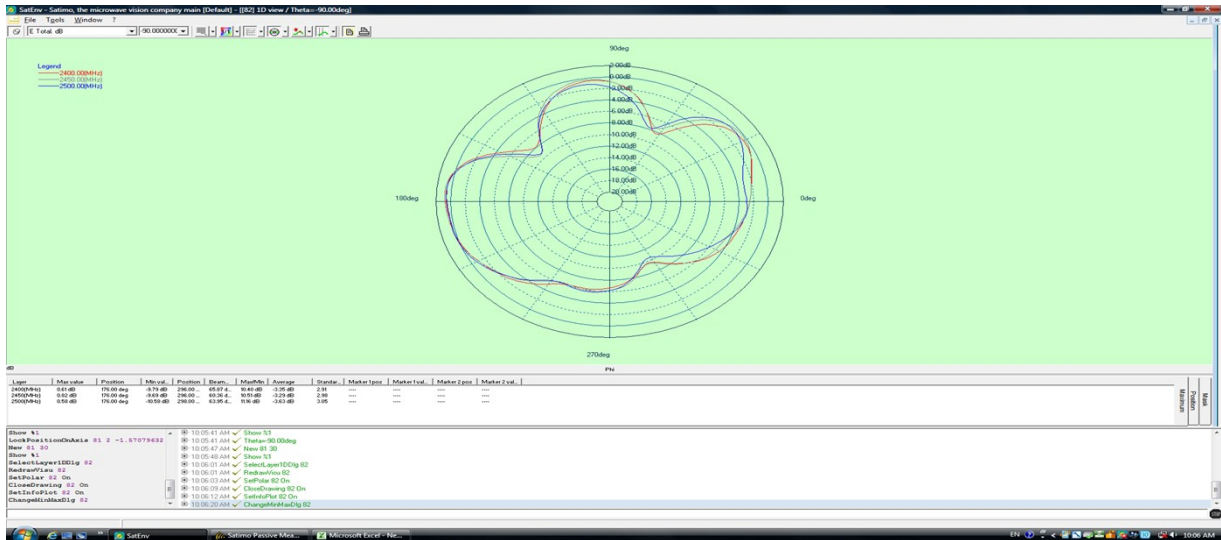


4. Radiation Pattern

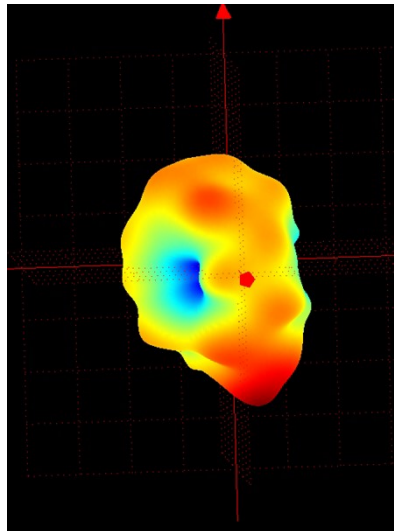
X-Z Plane Plane



X-Y Plane



3D Radiation Pattern



Frequency (MHz)	2400	2450	2500
Avg. Gain (dBi)	-0.23	-0.36	-0.51
Peck Gain (dBi)	4.98	5.19	4.55
Efficiency (%)	70	71.2	69