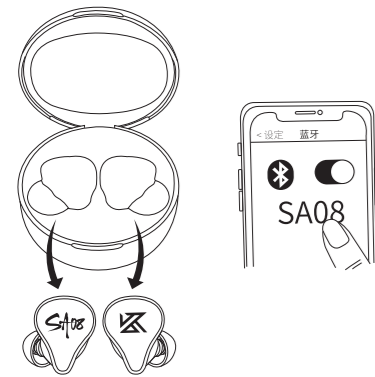
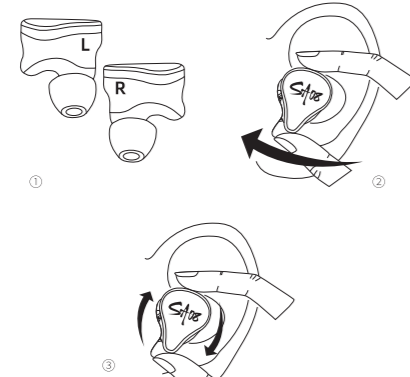


## 首次快速使用KZ-SA08



- 从充电舱同时取出左右耳机，耳机自动开机并进入配对模式。
- 6秒后打开手机蓝牙搜索并连接【SA08】。
- 以后每次只需把耳机从充电舱中取出，耳机与手机自动回连配对。  
\*请确认手机是否开启蓝牙模式，否则会导致自动回连失败。

## 正确舒适的佩戴



- 正确区分左右耳机，查看耳机上的标识，“L”适用于左耳，“R”适用于右耳。
- 将耳机头放入耳道口，轻轻一推，平整的推入耳内。
- 轻微旋转调整耳机的密封度和舒适度，获得更佳的音乐体验。

## 功能操作指示

左右耳机触控键均可使用，功能可能因设备而异



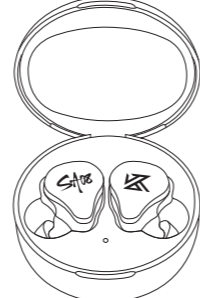
- ### 手动开机
- 长按触控键3秒开机。  
(开机后耳机指示灯亮一秒并有提示音)
- ### 左右耳机配对
- 开机后耳机自动进入配对状态。  
(配对时耳罩灯快闪，配对成功时主机红蓝灯交替闪烁，耳机灯慢闪，并有提示音)
- ### 手动关机
- 长按触控键6秒，耳机关机。  
(关机时耳机指示灯亮2秒熄灭，并有提示音)
- ### 三方通话
- 通话过程中，有新来电，有以下几种操作方式：  
(1)单击触控键挂断当前通话，再单击触控键接听来电。  
(2)长按2秒拒接来电，保持当前通话。  
(3)双击触控键，保持当前通话同时接通新来电。在三方通话的情况下，双击触控键切换通话对象，切换时有提示音。

## 功能操作指示



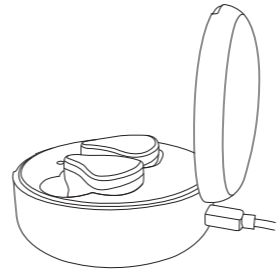
- ### 暂停/播放音乐
- 音乐播放时，单击触控键暂停播放，再单击触控键继续播放。
- ### 上一曲/下一曲
- 音乐播放时，双击左耳机触控键，切换到上一曲；双击右耳机触控键，切换到下一曲。
- ### 接听/挂断电话
- 来电状态下，单击触控键接听电话，再单击触控键挂断电话。
- ### 拒接来电
- 来电状态下，长按触控键拒接电话。
- ### 启动Siri (语音助手)
- 三击触控键进入延迟高性能模式。

## 耳机充电指示



- ### (1) 了解耳机电量
- ①使用耳机时，当耳机电量过低，每5分钟播报1次低电量提示音，约5分钟后耳机低电关机。(耳机指示红灯每1分钟内5下)
- ### (2) 耳机充电
- 耳机置入充电舱后，耳机机关进行充电。
- ### 充电舱充电指示
- ①了解充电舱电量  
②放入耳机时，舱内LED灯长亮10秒左右熄灭，显示充电舱当前电量。  
● 红灯: 0-30%电量 ● 黄灯: 30-70%电量 ● 绿灯: 70-100%电量  
③此时如需双耳使用，请从充电舱取出另一边耳机即可。  
④连接成功使用过程中: 右耳机置入充电舱后，左耳机正常使用; 左耳机置入充电舱后，等待右耳机提示连接成功，右耳机可开始单独使用。  
⑤切换左右耳机过程中，耳机可能会出现短暂的停顿，不影响正常使用。  
⑥重复充电和放电时间推移会导致电池效能下降。

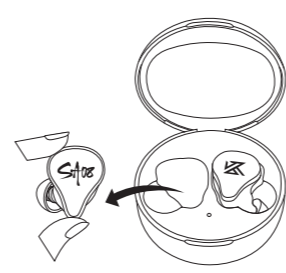
## 充电舱充电指示



- ### (1) 了解充电舱电量
- ①了解充电舱电量  
②放入耳机时，舱内LED灯长亮10秒左右熄灭，显示充电舱当前电量。  
● 红灯: 0-30%电量 ● 黄灯: 30-70%电量 ● 绿灯: 70-100%电量  
③此时如需双耳使用，请从充电舱取出另一边耳机即可。  
④连接成功使用过程中: 右耳机置入充电舱后，左耳机正常使用; 左耳机置入充电舱后，等待右耳机提示连接成功，右耳机可开始单独使用。  
⑤切换左右耳机过程中，耳机可能会出现短暂的停顿，不影响正常使用。  
⑥重复充电和放电时间推移会导致电池效能下降。

## 单耳使用指示

左右耳机均可单独使用



- ### ①打开充电舱，取出要使用的单耳耳机待其自动回连。
- ### ②耳机提示连接成功，即可开始单耳使用。
- \*此时如需双耳使用，请从充电舱取出另一边耳机即可。
- ### \*连接成功使用过程中: 右耳机置入充电舱后，左耳机正常使用; 左耳机置入充电舱后，等待右耳机提示连接成功，右耳机可开始单独使用。
- ### \*切换左右耳机过程中，耳机可能会出现短暂的停顿，不影响正常使用。
- ### ④为什么左右耳机切换使用不成功?
- 耳机首次连接手机时，弹出的配对提示框必须点击配对，否则会导致左右耳无法自由切换使用。

## 清除耳机配对信息

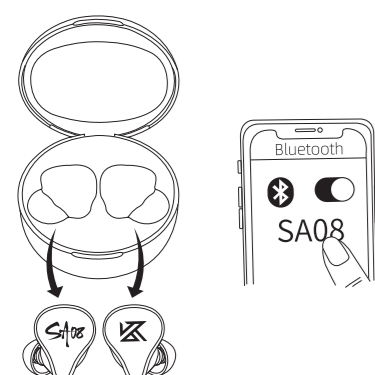


- 清除耳机配对信息能解决大部分耳机连接不成功等问题
- 将手机蓝牙上已连接过的【SA08】取消配对，再关闭手机蓝牙。
  - 将耳机从充电舱中取出，长按6秒关机，耳机指示灯熄灭并有提示音。
  - 耳机关机后，再长按触控键7秒进入配对模式(红蓝指示灯交替闪烁)，分别单击左右耳机触控键4次清除耳机配对信息，清除完成后耳机自动关机。
  - 依次完成左右耳机的清除配对信息后，将左右耳机置入充电舱，并关上舱盖。

## 安全规则

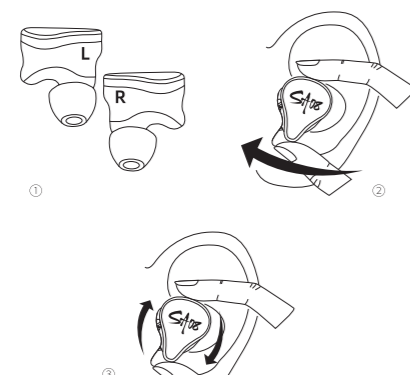
- 请勿以任何理由拆卸或改装产品，否则可能导致产品发生故障或烧毁；
- 请勿将产品接触液体、油或其他挥发性液体，否则可能造成设备严重损坏；
- 请避免接触锋利的边缘、不平的金属表面、金属件、配件和包装，以免出现任何可能的伤害；
- 请勿将产品置于温度过低或过高(5°C以下或45°C以上)的环境；
- 请避免靠近儿童或动物的眼睛使用设备指示器；
- 请勿在雷暴天气下使用产品，雷暴可能会导致设备工作不正常并增加触电的危险；
- 请勿不要在危险的情况下使用产品，如驾车、过马路或从事需要全神贯注的任何活动时，或在此类环境中。

## First Fast Use Of KZ-SA08



- Taking out the right and left earphones from the charging module at the same time, and the earphones will automatically start up and enter the pairing mode.
- Opening the mobile phone Bluetooth search and connect to 【SA08】 after 6 seconds.
- Earphone and mobile phone automatically match after the first time taking out the earphone from the charging module.  
\*Please confirm whether the phone is in Bluetooth opening mode or not, otherwise, it will fail to automatically connect.

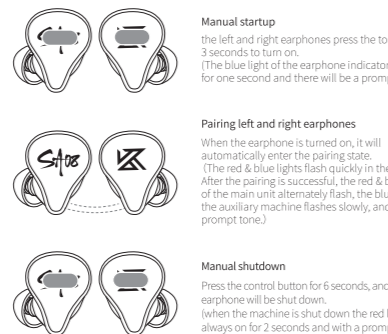
## Correctly And Comfortably Wearing



- correctly distinguish the left and right earphone, and check the logo on the earpiece. "L" is applicable to the left ear, while "R" is applicable to the right ear.
- Put the earphone head into the ear canal entrance, gently push it straight into the ear.
- slightly rotate the earphone to adjust its seal and comfort level for a better audio experience.

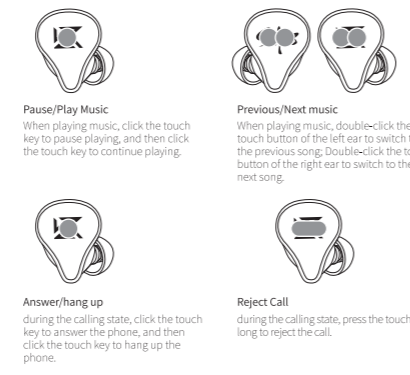
## Function Operation Indication

Left and right earphone touch keys are available. The functions may differ depending on the device



- ### Manual startup
- the left and right earphones press the touch key for 3 seconds to turn on.  
(The blue light of the earphone indicator will be on for one second and there will be a prompt sound.)
- ### Pairing left and right earphones
- When the earphone is turned on, it will automatically enter the pairing state. (The red & blue lights flash quickly in the pairing. After the pairing is successful, the red & blue lights of the main unit alternately flash, the blue light of the auxiliary machine flashes slowly, and there is a prompt tone.)
- ### Manual shutdown
- Press the control button for 6 seconds, and the earphone will be shut down.  
(When the machine is shut down, the red light is always on for 2 seconds and with a prompt sound.)
- ### Three-way calling
- During the call, there are new calls. There are the following operation modes:  
(1) Click the touch button to hang up the current call, then click the touch button to answer the new call.  
(2) Press and hold for 2 seconds to reject the new call and keep the current call.  
(3) Double-click the touch key to keep the current call and connect the new call at the same time. In case of three-way call, double-click the touch key to switch the call object, and there will be a prompt tone when switching.

## Function Operation Indication



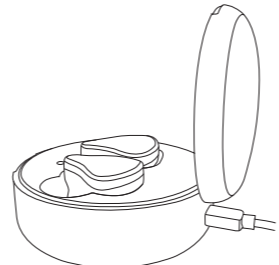
- ### Pause/Play Music
- When playing music, click the touch key to pause playing, and then click the touch key to continue playing.
- ### Previous/Next music
- When playing music, double-click the touch button of the left ear to switch to the previous song. Double-click the touch button of the right ear to switch to the next song.
- ### Answer/hang up
- during the calling state, click the touch key to answer the phone, and then click the touch key to hang up the phone.
- ### Reject Call
- during the calling state, press the touch key long to reject the call.
- ### High-performance mode
- Click three times the touch key to enter the low-latency high-performance mode.
- ### Start Siri (Voice Assistant)
- Press the touch button for 2 seconds to start Siri (Voice Assistant). This function may vary from device to device.

## Earphone Charging Indication



- ### (1) Understanding of the electric quantity of the charging cabin
- ① The LED indicator lights for about 10 seconds when the earphone is put into charging case, indicating the current power of the charging case.  
● Red light: 0-30% power ● Yellow light: 30-70% power ● Green light: 70-100% power  
② When using the earphone, when the power of the earphone is too low, the lowpower tone is broadcast every 5 minutes, and the earphone is powered off after about 5 minutes. (earphones indicate red light flashes 5 times per minute)
- ### (2) Earphone charging
- After the earphone is placed in the charging compartment, the earphone is turned off to charge.
- ### (3) Charging of charging cabin
- Plug in the charging line to charge the charging cabin. Unplug the charging cable and the indicator light goes out.  
● Charging: LED red light in the cabin is always on.  
● Fully charged: the LED green light in the cabin is always on.
- ### ⚠ Charging Considerations
- In order to ensure the service life and safety of the equipment, do not use the fast charger to charge.
  - The charger certified by the regular manufacturer must be selected.
  - Repeated charging and discharging will lead to the decrease of battery efficiency as time passes.

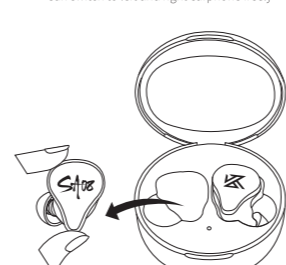
## The Charging Cabin's Charge Indication



- ### (1) Understanding of the electric quantity of the charging cabin
- ① The LED indicator lights for about 10 seconds when the earphone is put into charging case, indicating the current power of the charging case.  
● Red light: 0-30% power ● Yellow light: 30-70% power ● Green light: 70-100% power  
② When using the earphone, when the power of the earphone is too low, the lowpower tone is broadcast every 5 minutes, and the earphone is powered off after about 5 minutes. (earphones indicate red light flashes 5 times per minute)
- ### (2) Earphone charging
- After the earphone is placed in the charging compartment, the earphone is turned off to charge.
- ### (3) Charging of charging cabin
- Plug in the charging line to charge the charging cabin. Unplug the charging cable and the indicator light goes out.  
● Charging: LED red light in the cabin is always on.  
● Fully charged: the LED green light in the cabin is always on.
- ### ⚠ Charging Considerations
- In order to ensure the service life and safety of the equipment, do not use the fast charger to charge.
  - The charger certified by the regular manufacturer must be selected.
  - Repeated charging and discharging will lead to the decrease of battery efficiency as time passes.

## Single Ear Using Instruction

Can switch to left and right earphone freely



- ### ① Open the charging compartment, take out the single-sided earphone to be used, wait for it to automatically connect back.
- ### ② After the earphone prompts the connection is successful, you can start using one ear.
- \* If you need to use both ears at the same time, please take the other side of the earphone from the charging compartment to start using the ear.
- ### \* During the successful use of the connection, the right earphone is put into the charging compartment, and the left earphone is used normally; after the left earphone is put into the charging compartment, wait for the right earphone to prompt that the connection is successful, and the right earphone starts to be used alone.
- ### \* During the process of switching between the left and right earphone, there may be a brief pause in the earphone, this will not affect its normal use.
- ### ⚠ Why the earphone switch between left and right is unsuccessful?
- When the earphone is connected to the mobile phone for the first time, the pop-up matching prompt box must be clicked to match, otherwise the left and right ears will not be able to switch freely.

## Clearing Of Earphone Pairing Information



- Clearing earphone pairing information can solve problems such as unsuccessful connection of most earphones.
- Cancel the pairing of the connected 【SA08】 on the Bluetooth of the mobile phone, and then turn off the Bluetooth of the mobile phone.
  - Take the earphone out of the charging compartment, press and hold for 6 seconds to turn it off, the earphone indicator will go out and there will be a tone.
  - After the earphone is turned off, press and hold the touch button for 7 seconds to enter the pairing mode (the red and blue indicators flash alternately). Click the left and right earphone touch keys respectively for 4 times to clear the earphone pairing information, and the earphone will shut down automatically after clearing.
  - After clearing the pairing information of the left and right earphones in turn, put the left and right earphones into the charging compartment and close the compartment cover. At this point, you can re-use the earphone according to «First quick use earphone».

## Safety

- Do not disassemble or modify the earphones for any reason, or the earphones may break down or burn out.
- Do not touch the equipment with liquid, oil or other volatile liquid, or it may cause serious damage to the equipment.
- Beware of sharp edges, uneven metal surfaces, metal parts, fittings and packaging to avoid any possible damage.
- Do not use the equipment in the environment temperature too low or too high (below 5°C or 45°C above).
- Please avoid using the device indicator light close to the eyes of children or animals.
- Do not use the equipment in thunderstorms, which may lead to abnormal operation of the equipment and increase the risk of electric shock.
- Please do not use this product in dangerous places.

## Product Problem Solutions

| Problems   | Solution   |
|--|--|
| Does only one ear have the sound when using both ears? | It is recommended to clear the Bluetooth pairing information and reconnect because the pair of earphones was not paired successfully.                      |
| Can mobile phone (other devices) not find Bluetooth?   | Please put the earphone back on the charging hatch cover and take it out from the hatch cover again, close the device Bluetooth and reconnect.             |
| Can earphones not be turned on/off automatically?      | The earphone has not enough power. Please charge them in time.   |
| Are earphones disconnected?                            | When the earphone is out of range, it will be disconnected and automatically reconnect within 3 minutes if return to the scope of Bluetooth.               |
| Does the Earphone fail to auto-reconnect?              | Make sure your phone is in Bluetooth mode, or it will not be able to automatically reconnect.  |
| Is there no sound after connection?                    | Connection is not successful, please reconnect.  |
| Can the earphones not be charged?                      | The earphones are not placed correctly, please re-posit the charging cabin.  |
| Is there a noise on the phone?                         | Change the conversation environment or bring the earphone closer to the device.  |
| Is the earphone signal intermittent?                   | Place the phone on the same side of the earphone and let away from outside interference signals.   |
| Is the connection to the computer not successful?      | Please verify that whether your computer has Bluetooth functionality or not, if not, you can install a Bluetooth adapter with a USB interface by yourself. |
| Unable to use AAC transmission                         | K55 supports AAC transmission mode by default, and devices with Android system need to be upgraded to Android 10 or above.                                 |

note: the contents of this manual are for reference only and are subject to change without notice.

NOTE: This equipment has been tested and found to comply with the limits for a Class B digital device, pursuant to part 15 of the FCC Rules. These limits are designed to provide reasonable protection against harmful interference in a residential installation. This equipment generates uses and can radiate radio frequency energy and, if not installed and used in accordance with the instructions, may cause harmful interference to radio communications. However, there is no guarantee that interference will not occur in a particular installation. If this equipment does cause harmful interference to radio or television reception, which can be determined by turning the equipment off and on, the user is encouraged to try to correct the interference by one or more of the following measures:

- Reorient or relocate the receiving antenna.
- Increase the separation between the equipment and receiver.
- Connect the equipment into an outlet on a circuit different from that to which the receiver is connected.
- Consult the dealer or an experienced radio/TV technician for help.

Changes or modifications not expressly approved by the party responsible for compliance could void the user's authority to operate the equipment.

This device complies with Part 15 of the FCC Rules. Operation is subject to the following two conditions:

- (1) this device may not cause harmful interference, and
- (2) this device must accept any interference received, including interference that may cause undesired operation.

FCC ID : 2AYZ9-KZTWS