

Herdio®

UNIVERSAL BLUETOOTH AMPLIFIED BOX

AMP-BTX01

IMPORTANT SAFETY PRECATIONS

Changes or modifications not expressly approved by the party responsible for compliance could void the user's authority to operate the equipment. This device complies with Part 15 of the FCC Rules. Operation is subject to the following two conditions:

- (1) this device may not cause harmful interference, and
- (2) this device must accept any interference received, including interference that may cause undesired operation.

Note: This equipment has been tested and found to comply with the limits for a Class B digital device, pursuant to Part 15 of the FCC Rules. These limits are designed to provide reasonable protection against harmful interference in a residential installation. This equipment generates, uses, and can radiate radio frequency energy, and if not installed and used in accordance with the instructions, may cause harmful interference to radio communications. However, there is no guarantee that interference will not occur in a particular installation. If this equipment does cause harmful interference to radio or television reception, which can be determined by turning the equipment off and on, the user is encouraged to try to correct the interference by one or more of the following measures:

- Reorient or relocate the receiving antenna.
- Increase the separation between the equipment and receiver.
- Connect the equipment into an outlet on a circuit different from that to which the receiver is connected.
- Consult the dealer or an experienced radio/TV technician for help.

This equipment complies with FCC radiation exposure limits set forth for an uncontrolled environment. This equipment should be installed and operated with a minimum distance of 20cm between the radiator & your body. This transmitter must not be co-located or operating in conjunction with any other antenna or transmitter.

BLUETOOTH OPERATIONS

- 1) Make sure the power cables are correctly connected to DC 12V, and the power switch is in power-on status.
- 2) The Herdio Bluetooth Box is waiting for being paired right after it is powered on.
- 3) Turn on the Bluetooth on your Bluetooth device, scan for the unit Bluetooth Name "Herdio", Click it to connect.
- 4) You will hear a confirmation tone to indicate that the connection is made successfully. The Herdio Bluetooth Box then is ready to stream music from your device.
- 5) Please make sure the Bluetooth is turned on at your device. When the device is in Bluetooth range, it will connect Bluetooth automatically, and will be disconnected automatically when it is out of Bluetooth range.

SPECIFICATIONS

- Built-in 2 Channel Amplifier
- 4.0 Bluetooth Wireless Music Streaming
- 3.5mm Auxiliary Input

Herdio®

HIGH PERFORMANCE IN-CEILING/IN-WALL SPEAKERS

Model:	Speaker Size:	Bluetooth Function :
HCS418	4 inch	NO
HCS528	5.25 inch	NO
HCS628	6.5 inch	NO
HCS828	8 inch	NO
HCS418BT	4 inch	YES
HCS528BT	5.25 inch	YES
HCS628BT	6.5 inch	YES
HCS828BT	8 inch	YES



OWNER'S MANUAL

www.Herdiotech.com

English

FCC Requirement

Changes or modifications not expressly approved by the party responsible for compliance could void the user's authority to operate the equipment. This device complies with Part 15 of the FCC Rules. Operation is subject to the following two conditions:

- (1) This device may not cause harmful interference, and
- (2) This device must accept any interference received, including interference that may cause undesired operation.

Note: This equipment has been tested and found to comply with the limits for a Class B digital device, pursuant to Part 15 of the FCC Rules. These limits are designed to provide reasonable protection against harmful interference in a residential installation. This equipment generates, uses, and can radiate radio frequency energy, and if not installed and used in accordance with the instructions, may cause harmful interference to radio communications. However, there is no guarantee that interference will not occur in a particular installation. If this equipment does cause harmful interference to radio or television reception, which can be determined by turning the equipment off and on, the user is encouraged to try to correct the interference by one or more of the following measures:

- Reorient or relocate the receiving antenna.
- Increase the separation between the equipment and receiver.
- Connect the equipment into an outlet on a circuit different from that to which the receiver is connected.
- Consult the dealer or an experienced radio/TV technician for help.

This equipment complies with FCC radiation exposure limits set forth for an uncontrolled environment. This equipment should be installed and operated with a minimum distance of 20cm between the radiator & your body. This transmitter must not be co-located or operating in conjunction with any other antenna or transmitter.

www.Herdiotech.com

2
English

BLUETOOTH CONNECTIVITY (ONLY FOR BLUETOOTH VERSION):

1. Make sure the Bluetooth Ceiling Speaker system is properly connected to a power Source, and speaker wires are connected correctly.
2. Power ON the speaker system, and you shall hear a tone indicating the Bluetooth system is ready for pairing.
3. Then, go to your Smart device's Bluetooth Network Settings, The Bluetooth Network Name will appear as 'Herdio' on your device list, and click for connection. No password is required to connect but if you are prompted enter '0000' (4 zeroes).
4. You shall hear another indication tone when a successful Bluetooth connection is established, then you are ready to enjoy the music.

WARRANTY

All Herdio speaker products have 1 year Limited Warranty against defects in materials and workmanship. Proof of purchase must accompany all claims. During the warranty period Herdio will replace any defective part and correct any defect in workmanship without charge for either parts or labor.

www.Herdiotech.com

3
English

1 YEAR WARRANTY EXTENSION PLAN

How would you like to extend the warranty on your product for 1 YEAR? Simply write and post a review of the product online. Then, register your product online at Herdiotech.com or send an e-mail to warranty@Herdiotech.com including your name, address, and phone number, as well as a link to the review.

TECHNICAL SPECIFICATIONS

MODEL NO.	HCS418C4BT	HCS528C5BT	HCS628C6BT	HCS828C8BT
SPEAKER SIZE:	4 inch	5.25 inch	6.5 inch	8 inch
MAX Power Output:	80W	100W	100W	200W
Sensitivity:	85db	85db	85db	85db
Impedance:	8 Ohms	8 Ohms	8 Ohms	8 Ohms
Frequency Response:	60-20KHz	60-20KHz	55-20KHz	60-20KHz
Cut-Out Diameter:	52 mm/2.05 in.	73 mm/2.87 in.	73 mm/2.87 in.	86 mm/3.39 in.

www.Herdiotech.com

4
English

INSTALLATION GUIDE

1. Only for: HCS418/HCS418BT/HCS528/HCS528BT/HCS628/HCS628BT/HCS828/HCS828BT

1

Cut the Ø165mm hole.
Note: Always allow at least one-half inch between a wall face and the speaker mount or the locking tabs will not be able to seal properly.

2

Connect the speaker wires to the speaker.

3

Screw down each of the four Phillips head screws. The locking tabs will secure the speaker against the wall. The screws for the tabs should be at least 1/2" from the edges of the hole to secure the grip.

4

Replace the mesh grille.

2. Only for: HCS628/HCS628BT

1

1. Cut an installation hole over the ceiling (diameter hole)

2

2. Flip up the Speaker Mounting buckle.

3

3. Put the speaker up into the ceiling mounting hole.

4

4. The Mounting buckle will automatically flip down and get the speaker fastened into the ceiling.

www.Herdiotech.com

5
English

Modell Nr	Lautsprecher gröÙe	Bluetooth Funktion
HCS418	4 Zoll	NO
HCS528	5,25 Zoll	NO
HCS628	6,5 Zoll	NO
HCS828	8 Zoll	NO
HCS418BT	4 Zoll	YES
HCS528BT	5,25 Zoll	YES
HCS628BT	6,5 Zoll	YES
HCS828BT	8 Zoll	YES



Benutzerhandbuch

www.Herdiotech.com

Deutsch

Bluetooth-Verbindung (nur Bluetooth-Version)

1. Stellen Sie sicher, dass der Bluetooth-Deckenlautsprecher an die Stromversorgung angeschlossen und das Audiokabel korrekt angeschlossen ist.
2. Wenn der Lautsprecher eingeschaltet ist, hören Sie die Aufforderung, dass das Bluetooth-System für die Verbindung bereit ist.
3. Öffnen Sie dann die Bluetooth-Einstellungen Ihres intelligenten Geräts, suchen Sie den Bluetooth-Namen "Herdio" in der Geräteliste und klicken Sie auf , um eine Verbindung herzustellen. Geben Sie ggf. das Passwort 0000 ein.
4. Nachdem die Verbindung erfolgreich hergestellt wurde, ertönt eine Sprachaufforderung, und dann können Sie Musik genießen.

Qualitätssicherung

Für die Material- und Verarbeitungsqualität aller Herdio-Lautsprecher gibt es eine einjährige beschränkte Garantie. Der Kaufnachweis muss bei der Reklamation vorgelegt werden. Während der Garantiezeit ersetzt

www.Herdiotech.com

2
Deutsch

Herdio die beschädigten Teile kostenlos und repariert die Produkte. Der Kunde braucht keine Lohnkosten zu bezahlen.

1 Jahr Garantieverlängerungsplan

Wie kann ich die Garantiezeit des gekauften Produkts um 1 Jahr verlängern? Sie müssen nur Kommentare zum Produkt online hochladen. Registrieren Sie sich dann auf Herdiotech.com oder senden Sie eine E-Mail an Warranty @Herdiotech.com. Der Inhalt der E-Mail enthält den Namen, die Adresse, die Telefonnummer und den Link zum Produktkommentar.

Spezifikationen

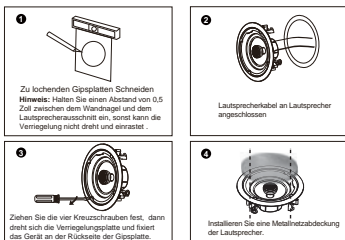
Produkttyp	HCS418/HCS418BT	HCS528/HCS528BT	HCS628/HCS628BT	HCS828/HCS828BT
Größe der Lautsprecher	4 Zoll	5,25 Zoll	6,5 Zoll	8 Zoll
Max. Ausgangsleistung	80W	150W	150W	300W
Empfindlichkeit	95db	95db	95db	95db
Impedanz	8 ohms	8 ohms	8ohms	8ohms
Frequenzgang	60-20KHZ	60-20KHZ	50-20KHZ	60-20KHZ
Durchmesser der Bohrung	5,7 Zoll(145 CM)	7,3 Zoll(18,5 CM)	7,5 Zoll(19 CM)	9 Zoll(22,5 CM)

www.Herdiotech.com

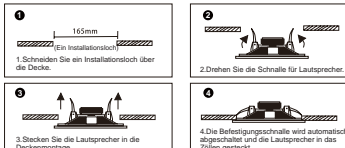
3
Deutsch

Installation:

1.Only for: HCS418/HCS418BT/HCS528/HCS528BT/HCS628/HCS628BT



2.Only for: HCS828/HCS828BT



www.Herdiotech.com

4
Deutsch

Herdio®

Sistema audio a soffitto ad alte prestazioni

Modello del prodotto	Dimensioni dell'altoparlante	Connessione Bluetooth
HCS418	4 inch	NO
HCS528	5,25 inch	NO
HCS628	6,5 inch	NO
HCS828	8 inch	NO
HCS418BT	4 inch	YES
HCS528BT	5,25 inch	YES
HCS628BT	6,5 inch	YES
HCS828BT	8 inch	YES



Manuale di istruzioni

www.Herdiotech.com

Italiano

Connessione Bluetooth (Solo versione Bluetooth)

1. Accertarsi che l'altoparlante da soffitto Bluetooth sia collegato all'alimentazione e che il cavo dell'altoparlante sia collegato correttamente.
2. Quando il sistema di altoparlanti è acceso, sentirai il messaggio che il sistema Bluetooth è pronto per la connessione.
3. Quindi, apri le impostazioni di rete Bluetooth del tuo dispositivo smart, trova il nome Bluetooth "herdio" nell'elenco dei dispositivi e fai clic su Connetti. Se hai bisogno di una password, inserisci 0000.
4. Al termine della connessione, verrà visualizzato un messaggio vocale, quindi è possibile iniziare a ascoltare la musica.

Garanzia di qualità

Esiste una garanzia limitata di un anno per i materiali e la lavorazione di tutti i prodotti per altoparlanti herdio. La prova di acquisto deve essere fornita al momento del reclamo. Durante il periodo di garanzia, herdio sostituirà le parti danneggiate gratuitamente, riparerà i problemi di fabbricazione del prodotto e il cliente non deve pagare il costo del lavoro.

www.Herdiotech.com

2
Italiano

Piano di estensione della garanzia di 1 anno

Come posso prolungare il periodo di garanzia di 1 anno dei prodotti acquistati? Devi solo caricare i commenti sul prodotto online, quindi registrarti o inviare un'e-mail a Guarantee@herdiotech.com, inclusi nome, indirizzo, numero di telefono e link di commento del prodotto.

Specifiche tecniche

Modello del prodotto	HCS418/HCS418BT	HCS528/HCS528BT	HCS628/HCS628BT	HCS828/HCS828BT
Dimensioni dell'altoparlante	4 pollici	5,25 pollici	6,5 pollici	8 pollici
Potenza massima in uscita	80W	150W	150W	300W
sensibilità	86dB	86dB	86dB	86dB
Impedanz	8 Ohms	8 Ohms	8 Ohms	8 Ohms
Risposta in frequenza	60-20000 Hz	60-20000 Hz	50-20000 Hz	60-20000 Hz
Diametro del foro	5,7 pollici (145 centimetri)	7,3 pollici (18,5 centimetri)	7,5 pollici (19 centimetri)	8 pollici (20,5 centimetri)

www.Herdiotech.com

3
Italiano

Procedura guidata di installazione:

1. Only for: HCS418/HCS418BT/HCS528/HCS528BT/HCS628/HCS628BT/HCS828/HCS828BT

1

Tagliare il cartongesso aperto

Nota: lasciare 0,5 pollici tra i perni e il taglio dell'altoparlante, altrimenti il fermo non ruoterà e si manterrà in posizione.

2

Cavo dell'altoparlante e collegato all'altoparlante

3

Stingere le quattro viti Philips, quindi la linguetta di bloccaggio ruota e fissa l'unità alla superficie posteriore del cartongesso.

4

Installare la griglia degli altoparlanti in metallo.

2. Only for: HCS628/HCS628BT

1

165mm
Foro di installazione

1: Tagliare un foro di installazione sul soffitto.

2

2: Ribalta la fibbia di montaggio del presidente.

3

3: Montare gli altoparlanti nel foro di montaggio del soffitto.

4

4: La fibbia di montaggio si capovolverà automaticamente e gli altoparlanti saranno fissati nella tela.

www.Herdiotech.com

4
Italiano

Herdio®

Système de Haut-Parleur de Plafond Haute Performance

Modèle du produit	Dimension du haut-parleur	Connexion Bluetooth
HCS418	4 Inch	NO
HCS528	5.25 Inch	NO
HCS628	6.5 Inch	NO
HCS828	8 Inch	NO
HCS418BT	4 Inch	YES
HCS528BT	5.25 Inch	YES
HCS628BT	6.5 Inch	YES
HCS828BT	8 Inch	YES



Manuel d'Instructions

www.Herdiotech.com

Français

Connexion Bluetooth (uniquement applicable à la version Bluetooth)

1. Assurez-vous que le haut-parleur de plafond Bluetooth est branché sur la prise électrique et que le câble du haut-parleur est correctement mis à la terre.
2. Après avoir allumé le système de haut-parleur, vous entendrez l'invite vocale indiquant que le système Bluetooth est prêt à effectuer la connexion.
3. Ensuite, accédez aux Paramètres du réseau Bluetooth de votre appareil intelligent, trouvez le nom "Herdio" Bluetooth dans la liste des appareils, cliquez pour établir la connexion. Si un mot de passe est requis, veuillez entrer 0000.
4. Une fois la connexion établie, vous pourrez entendre une invite vocale, ainsi, vous pourrez commencer à apprécier la musique.

Garantie de qualité

La garantie limitée d'un an couvre les défauts de matériaux et de fabrication des produits de haut-parleur de Herdio. La preuve d'achat doit être fournie pour demander un service de garantie. Pendant la période de garantie, Herdio remplacera les pièces endommagées et

www.Herdiotech.com

2
Français

réparera le produit gratuitement si nécessaire, le client n'a pas besoin de payer des frais de main-d'œuvre.

1 Jahr Garantieverlängerungsplan

Comment prolonger la durée de garantie du produit? Il vous suffit de laisser un commentaire sur ce produit. Inscrivez-vous sur Herdiotech.com ou envoyez un e-mail à warranty@Herdiotech.com en indiquant le nom, l'adresse, le numéro de téléphone, le lien de commentaire du produit.

Spécifications techniques

Modèle du produit	HCS418/HCS418BT	HCS528/HCS528BT	HCS628/HCS628BT	HCS828/HCS828BT
Dimension du haut-parleur	4 pouces	5,25 pouces	6,5 pouces	8 pouces
Puissance de sortie maximale	80W	150W	150W	300W
Sensibilité	85db	85db	85db	85db
Impédance	8 Ohms	8 Ohms	8 Ohms	8 Ohms
Réponse en fréquence	60-20KHz	60-20KHz	50-20KHz	60-20KHz
Diamètre du trou ouvert	5,7 pouce(145 CM)	7,3 pouce(18,5 CM)	7,5 pouce(19 CM)	8 pouce(20,5 CM)

www.Herdiotech.com

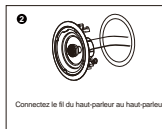
3
Français

COMMENT INSTALLER

1. Only for: HCS418/HCS418BT/HCS528/HCS528BT/HCS628/HCS628BT



Coupez le panneau de plâtre au trou ouvert.
Remarque: laissez un espace de 0,5 pouce entre le clou mural et l'entaille du haut-parleur, sinon le trou ne pourra pas être tourné et fixé en place.



Connecter le fil du haut-parleur au haut-parleur.



Assurez-vous que les vis de montage sont serrées, la pièce de ventilation tournera. Fixez le dispositif à la surface arrière de la plaque de plâtre.



Installez la grille métallique du haut-parleur.

2. HCS628/HCS628BT



1. Ouvrir un trou de montage dans le plafond.



2. Retourner la boucle de montage du Haut - parleur.



3. Insérez le Haut - parleur dans le trou de montage du plafond.



4. La boucle de montage se retournera automatiquement vers le bas et fixera le Haut - parleur au plafond.

www.Herdiotech.com

4
Français

Herdio®

Sistema de Electrónica de Audio de Techo de Alto Rendimiento

Modelo del producto	Tamaño del altavoces	Funciones de Bluetooth
HCS418	4 inch	NO
HCS528	5.25 inch	NO
HCS628	6.5 inch	NO
HCS828	8 inch	NO
HCS418BT	4 inch	YES
HCS528BT	5.25 inch	YES
HCS628BT	6.5 inch	YES
HCS828BT	8 inch	YES



Manual de Instrucciones

www.Herdiotech.com

Español

Conexión de Bluetooth (Sólo para versión de Bluetooth)

- Asegúrese de que Bluetooth electrónica de audio de techo esté conectada a la fuente de alimentación y que el cable del altavoz esté conectado correctamente.
- Después de encender el sistema de electrónica de audio, escuchará el tono de aviso de que el sistema de Bluetooth está esperando para conectarse.
- Luego, abra la configuración de red de Bluetooth de su dispositivo inteligente, busque el nombre de Bluetooth "Herdio" en la lista de dispositivos y haga clic en Conectar, si necesita la contraseña, ingrese 0000 por favor
- Después de conectar exitosamente, habrá un tono de aviso de voz y luego podrá empezar a disfrutar de la música.

Garantía de Calidad

Sobre los materiales y la mano de obra de todos los productos de electrónica de audio de Herdio, se proporciona la garantía limitada de un año. El cliente se debe presentar un comprobante de compra al hacer un reclamo. Durante el período de garantía, Herdio

www.Herdiotech.com

2
Español

reemplazará las piezas dañadas de forma gratuita, reparará la mano de obra del producto y el cliente no tendrá que pagar los costos de mano de obra.

Plan de Garantía Extendida de 1 año

¿Cómo puede extender el período de garantía del producto comprado por 1 año? Solo necesita subir comentarios sobre el producto en línea. Luego regístrese en Herdiotech.com o envíe un correo electrónico a warranty@Herdiotech.com, el contenido del correo electrónico incluye nombre, dirección, número de teléfono y enlace de comentario del producto.

Especificaciones Técnicas

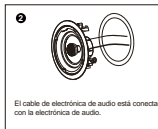
Modelo del producto	HCS418/HCS418BT	HCS528/HCS528BT	HCS628/HCS628BT	HCS828/HCS828BT
Tamaño del electrónica de audio	4 inch	5.25 inch	6.5 inch	8 inch
Máxima potencia de salida	80W	150W	150W	300W
Grado de sensibilidad	85db	85db	85db	85db
Impedancia	8 Ohms	8 Ohms	8 Ohms	8 Ohms
Respuesta de frecuencia	60-20KHZ	60-20KHZ	50-20KHZ	60-20KHZ
Diámetro del agujero	5.7 inch(145 CM)	7.3 inch(18.5 CM)	7.5 inch(19CM)	8 inch(20.5 CM)

www.Herdiotech.com

3
Español

GUÍA DE INSTALACIÓN:

1. Only for: HCS418/HCS418BT/HCS528/HCS528BT/HCS628/HCS628BT



2. Only for: HCS628/HCS628BT



www.Herdiotech.com

4
Español

Herdio®

高品质蓝牙音响系统

型号:	尺寸:	蓝牙功能:
HCS418	4英寸	否
HCS528	5.25英寸	否
HCS628	6.5英寸	否
HCS828	8英寸	否
HCS418BT	4英寸	含
HCS528BT	5.25英寸	含
HCS628BT	6.5英寸	含
HCS828BT	8英寸	含



产品说明书

www.Herdiotech.com

蓝牙连接（只适用蓝牙版本）

1. 确保蓝牙吸顶音箱连接电源，喇叭线正确地连接。
2. 打开音箱系统后，你会听到蓝牙系统已就绪等待连接的提示音。
3. 然后，打开你智能设备的蓝牙网络设置，在设备列表中找到蓝牙名字“Herdio”，并点击连接，如果需要密码请输入0000。
4. 连接成功后会有语音提示音，然后你就可以开始欣赏音乐了。

质保服务

针对所有Herdio品牌音响整机产品的提供一年保修期质保服务。客户在进行售后服务时，需提供购买凭证。在保修期内，本公司会对有故障的产品提供免费维修服务，人工损坏的除外。

www.Herdiotech.com

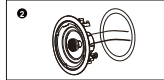
二

安装步骤

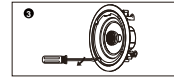
1.HCS418\HCS418BT\HCS528\HCS528BT\HCS628\HCS628BT 安装示意图



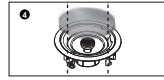
根据喇叭安装直径 对天花板进行开孔。
注意：在螺钉和扬声器接口之间留出0.5英寸，否则喇叭无法旋转固定到位。



将喇叭线与喇叭进行相连

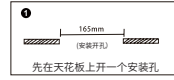


拧紧四个十字螺丝钉然后锁定片会旋转并将装置固定到天花板的后表面。



装上金属喇叭网罩

2.HCS628\HCS628BT 安装示意图



先在天花板上开一个安装孔



将喇叭安装扣向上翻起来



将喇叭向天花板安装孔往上顶



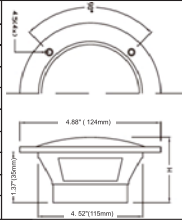
待安装扣自动翻下来压紧天花板

www.Herdiotech.com

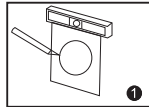
三

TECHNICAL SPECIFICATIONS

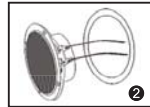
Waterproof:	IP66
Outside Facial Diameter:	4.88"(124mm)
Mounting Hole Diameter:	4.52"(115mm)
Mounting Depth:	1.37"(35mm)
Impedance:	4Ohms
Frequency Response:	100Hz-18Khz
Power Handling(Max):	160W(Pair)
Magnet Material:	3.4oz
SPL(1Watt/ 1Meter):	89dB
Product Material:	Molded ABS Plastic Basket



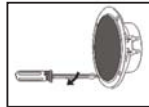
INSTALLATION GUIDE



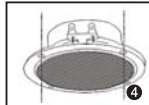
1
Cut the drywall.
Note: Always allow at least one-half inch between a wall stud and the speaker cutout or the locking tabs will not be able to swivel into place.



2
Connect the speaker wires to the speaker.



3
Screw down each of the four Phillips head screws. The locking tabs will swivel into place and secure the unit to the rear surface of the drywall. Put in the strips of adhesive to secure the grille.



4
Replace the metal grille.



5
Complete

www.Herdiotech.com

4
English

Herdio®

4" WATERPROOF MARINE SPEAKER



HMS-5104



OWNER'S MANUAL
www.Herdiotech.com

English

FCC Requirement

Changes or modifications not expressly approved by the party responsible for compliance could void the user's authority to operate the equipment. This device complies with Part 15 of the FCC Rules. Operation is subject to the following two conditions:
(1) this device may not cause harmful interference, and
(2) this device must accept any interference received, including interference that may cause undesired operation.

Note: This equipment has been tested and found to comply with the limits for a Class B digital device, pursuant to Part 15 of the FCC Rules. These limits are designed to provide reasonable protection against harmful interference in a residential installation. This equipment generates, uses, and can radiate radio frequency energy, and if not installed and used in accordance with the instructions, may cause harmful interference to radio communications.

However, there is no guarantee that interference will not occur in a particular installation. If this equipment does cause harmful interference to radio or television reception, which can be determined by turning the equipment off and on, the user is encouraged to try to correct the interference by one or more of the following measures:

- Reorient or relocate the receiving antenna.
- Increase the separation between the equipment and receiver.
- Connect the equipment into an outlet on a circuit different from that to which the receiver is connected.
- Consult the dealer or an experienced radio/TV technician for help.

This equipment complies with FCC radiation exposure limits set forth for an uncontrolled environment. This equipment should be installed and operated with a minimum distance of 20cm between the radiator & your body. This transmitter must not be co-located or operating in conjunction with any other antenna or transmitter.

BLUETOOTH CONNECTIVITY (ONLY FOR BLUETOOTH VERSION):

1. Make sure the Bluetooth Ceiling Speaker system is properly connected to a power Source, and speaker wires are connected correctly.

www.Herdiotech.com

2
English

2. Power ON the speaker system, and you shall hear a tone indicating the Bluetooth system is ready for pairing.
3. Then, go to your Smart device's Bluetooth Network Settings. The Bluetooth Network Name will appear as 'Herdio' on your device list, and click for connection. No password is required to connect but if you are prompted enter '0000' (4 zeroes).
4. You shall hear another indication tone when a successful Bluetooth connection is established, then you are ready to enjoy the music.

WARRANTY

All Herdio speaker products have 1 year Limited Warranty against defects in materials and workmanship. Proof of purchase must accompany all claims. During the warranty period Herdio will replace any defective part and correct any defect in workmanship without charge for either parts or labor.

1 YEAR WARRANTY EXTENSION PLAN

How would you like to extend the warranty on your product for 1 YEAR? Simply write and post a review of the product online. Then, register your product online at Herdiotech.com or send an e-mail to warranty@Herdiotech.com including your name, address, and phone number, as well as a link to the review.

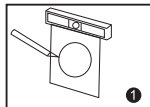
www.Herdiotech.com

3
English

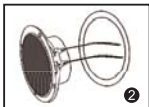
Spezifikationen

WASSERDICHTES:	IP66	
Produkt Durchmesser:	4.88\"(124mm)	
Durchmesser der Bohrung:	4.52\"(115mm)	
Tiefe der Montage:	1.37\"(35mm)	
Impedanz:	4Ohms	
Frequenzgang:	100Hz-18Khz	
Max. Ausgangsleistung:	160W(Pair)	
Magnet Material:	3.4oz	
SPL(1Watt/ 1Meter):	89dB	
Produkts Material:	Molded ABS Kunststoff	

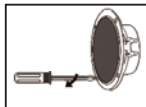
Installation:



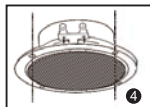
1. Zu lochenden Gipsplatten. Schneiden Hinweis: Halten Sie einen Abstand von 0,5 Zoll zwischen dem Wandnagel und dem Lautsprecherausschnitt ein, sonst kann die Verriegelung nicht drehen und einrasten.



2. Lautsprecherkabel an Lautsprecher angeschlossen



3. Ziehen Sie die vier Kreuzschraubenfest, dann dreht sich die Verriegelungsplatte und fixiert das Gerät an der Rückseite der Gipsplatte.



4. Installieren Sie eine Metallnetzabdeckung der Lautsprecher.



Vollständig

www.Herdiotech.com

4
Deutsch

Herdio®

4 Zoll WASSERDICHTER MARINE-LAUTSPRECHER



HMS-5104



Benutzerhandbuch
www.Herdiotech.com

Deutsch

Bluetooth-Verbindung (nur Bluetooth-Version)

1. Stellen Sie sicher, dass der Bluetooth-Deckenlautsprecher an die Stromversorgung angeschlossen und das Audiokabel korrekt angeschlossen ist.
2. Wenn der Lautsprecher eingeschaltet ist, hören Sie die Aufforderung, dass das Bluetooth-System für die Verbindung bereit ist.
3. Öffnen Sie dann die Bluetooth-Einstellungen Ihres intelligenten Geräts, suchen Sie den Bluetooth-Namen "Herdio" in der Geräteliste und klicken Sie auf , um eine Verbindung herzustellen. Geben Sie ggf. das Passwort 0000 ein.
4. Nachdem die Verbindung erfolgreich hergestellt wurde, ertönt eine Sprachaufforderung, und dann können Sie Musik genießen.

www.Herdiotech.com

2
Deutsch

Qualitätssicherung

Für die Material- und Verarbeitungsqualität aller Herdio-Lautsprecher gibt es eine einjährige beschränkte Garantie. Der Kaufnachweis muss bei der Reklamation vorgelegt werden. Während der Garantiezeit ersetzt Herdio die beschädigten Teile kostenlos und repariert die Produkte. Der Kunde braucht keine Lohnkosten zu bezahlen.

1 Jahr Garantieverlängerungsplan

Wie kann ich die Garantiezeit des gekauften Produkts um 1 Jahr verlängern? Sie müssen nur Kommentare zum Produkt online hochladen. Registrieren Sie sich dann auf Herdiotech. comoder senden Sie eine E-Mail an Warranty @Herdiotech.com. Der Inhalt der E-Mail enthält den Namen, die Adresse, die Telefonnummer und den Link zum Produktkommentar.

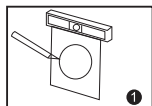
www.Herdiotech.com

3
Deutsch

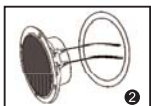
Specifiche tecniche

Impermeabile:	IP66	
Diametro facciale esterno:	4.88\"(124mm)	
Diametro del foro:	4.52\"(115mm)	
Profondità di montaggio:	1.37\"(35mm)	
Impedenza:	4Ohms	
Risposta in frequenza:	100Hz-18Khz	
Potenza massima in uscita:	160W(Pair)	
Materiale magnetico:	3.4oz	
SPL(1Watt/ 1Meter):	89dB	
prodotto materiale:	Cestino di plastica di ABS	

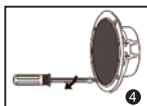
Procedura guidata di installazione



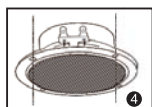
1
Tagliare il cartongesso aperto
Nota:lasciare 0,5 pollici tra i perni e il ritaglio dell'altoparlante, altrimenti il fermo non ruoterà e si manterrà in posizione



2
cavo dell'altoparlante è collegato all'altoparlante



4
Stringere le quattro viti Phillips, quindi la linguetta di bloccaggio ruota e fissa l'unità alla superficie posteriore del cartongesso.



4
Installare la griglia degli altoparlanti in metallo.



5
Complet

www.Herdiotech.com

4
Italiano

Herdio®

4" Impermeabile marini altoparlanti



HMS-5104



Manuale di istruzioni
www.Herdiotech.com

Italiano

Connessione Bluetooth (Solo versione Bluetooth)

1. Accertarsi che l'altoparlante da soffitto Bluetooth sia collegato all'alimentazione e che il cavo dell'altoparlante sia collegato correttamente.
2. Quando il sistema di altoparlanti è acceso, sentirai il messaggio che il sistema Bluetooth è pronto per la connessione.
3. Quindi, apri le impostazioni di rete Bluetooth del tuo dispositivo smart, trova il nome Bluetooth "herdio" nell'elenco dei dispositivi e fai clic su Connetti. Se hai bisogno di una password, inserisci 0000
4. Al termine della connessione, verrà visualizzato un messaggio vocale, quindi è possibile iniziare a ascoltare la musica.

www.Herdiotech.com

2
Italiano

Garanzia di qualità

Esiste una garanzia limitata di un anno per i materiali e la lavorazione di tutti i prodotti per altoparlanti herdio. La prova di acquisto deve essere fornita al momento del reclamo. Durante il periodo di garanzia, herdio sostituirà le parti danneggiate gratuitamente, riparerà i problemi di fabbricazione del prodotto e il cliente non deve pagare il costo del lavoro.

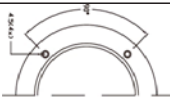
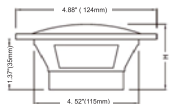
Piano di estensione della garanzia di 1 anno

Come posso prolungare il periodo di garanzia di 1 anno dei prodotti acquistati? Devi solo caricare i commenti sul prodotto online, quindi registrarti o inviare un'e-mail a Guarantee@herdiotech.com, inclusi nome, indirizzo, numero di telefono e link di commento del prodotto .

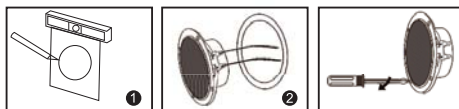
www.Herdiotech.com

3
Italiano

Spécifications techniques

Étanche:	IP66	
Diamètre facial extérieur:	4.88"(124mm)	
Diamètre du trou ouvert:	4.52"(115mm)	
Profondeur d'installation:	1.37"(35mm)	
Impédance:	4Ohms	
Réponse en fréquence:	100Hz-18Khz	
Puissance de sortie maximale	160W(Pair)	
Matériau magnétique:	3.4oz	
SPL(1Watt/ 1Meter):	89dB	
Matériau de produit	Panier en plastique ABS moulé	

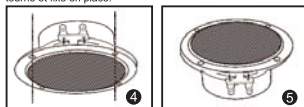
Installation:



Coupez le panneau de plâtre au trou ouvert
Remarque: Laissez un espace de 0.5 pouce entre le clou mural et l'entaille du haut-parleur, sinon le verrou ne pourra pas être tourné et fixé en place.

Connectez le fil du haut-parleur au haut-parleur

Après que les quatre vis cruciformes sont serrés, la pièce de verrouillage tournera. Fixez le dispositif à la surface arrière de la plaque de plâtre.



Installez la grille métallique du haut-parleur.

Complet

www.Herdiotech.com

4
Français

Herdio®

4" étanche marins haut-parleurs



HMS-5104



Manuel d'Instructions
www.Herdiotech.com

Français

Connexion Bluetooth (uniquement applicable à la version Bluetooth)

- Assurez-vous que le haut-parleur de plafond Bluetooth est branché sur la prise électrique et que le câble du haut-parleur est correctement mis à la terre.
- Après avoir allumé le système de haut-parleur, vous entendrez l'invite vocale indiquant que le système Bluetooth est prêt à effectuer la connexion
- Ensuite, accédez aux Paramètres du réseau Bluetooth de votre appareil intelligent, trouvez le nom "Herdio" Bluetooth dans la liste des appareils, cliquez pour établir la connexion. Si un mot de passe est requis, veuillez entrer 0000.
- Une fois la connexion établie, vous pourrez entendre une invite vocale, ainsi, vous pourrez commencer à apprécier la musique.

www.Herdiotech.com

2
Français

Garantie de qualité

La garantie limitée d'un an couvre les défauts de matériaux et de fabrication les produits de haut-parleur de Herdio. La preuve d'achat doit être fournie pour demander un service de garantie. Pendant la période de garantie, Herdio remplacera les pièces endommagées et réparera le produit gratuitement si nécessaire, le client n'a pas besoin de payer des frais de main-d'œuvre.

1 Jahr Garantieverlängerungsplan

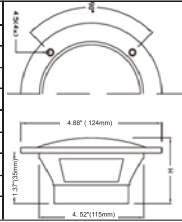
Comment prolonger la durée de garantie du produit? Il vous suffit de laisser un commentaire sur ce produit. Inscrivez-vous sur Herdiotech.com ou envoyez un e-mail à warranty@Herdiotech.com en indiquant le nom, l'adresse, le numéro de téléphone, le lien de commentaire du produit.

www.Herdiotech.com

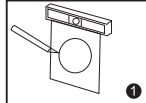
3
Français

Especificaciones Técnicas

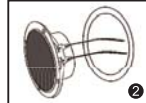
Impermeable:	IP66
Diámetro facial exterior:	4.88"(124mm)
Diámetro del agujero:	4.52"(115mm)
Profundidad de instalación:	1.37"(35mm)
Impedancia:	4Ohms
Respuesta de frecuencia:	100Hz-18KHz
Máxima potencia de salida:	160W(Pair)
Materiales magnéticos:	3.4oz
SPL(1Watt/ 1Meter):	89dB
producto material:	ABS Plastics cesta



Guía de Instalación:



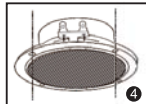
Corte el panel de yeso con agujero. Nota: Quede 0.5 pulgadas entre el clavo de la pared y el abierto de corte de electrónica de audio, de lo contrario el bloqueo no podrá girar y fijar en su lugar.



El cable de electrónica de audio está conectada con la electrónica de audio.



Apriete los cuatro Phillips tornillos, luego la pieza de bloqueo girará y fijará el dispositivo a la superficie posterior del panel de yeso.



Instale la rejilla metálica de electrónica de audio.



Complet

www.Herdiotech.com

4
Español

Herdio®

4" Impermeable marinos altavoces



HMS-5104



Manual de Instrucciones
www.Herdiotech.com

Español

Conexión de Bluetooth (Sólo para versión de Bluetooth)

1. Asegúrese de que Bluetooth electrónica de audio de techo esté conectada a la fuente de alimentación y que el cable del altavoz esté conectado correctamente.
2. Después de encender el sistema de electrónica de audio, escuchará el tono de aviso de que el sistema de Bluetooth está esperando para conectarse.
3. Luego, abra la configuración de red de Bluetooth de su dispositivo inteligente, busque el nombre de Bluetooth "Herdio" en la lista de dispositivos y haga clic en Conectar, si necesita la contraseña, ingrese 0000 por favor.
4. Después de conectar exitosamente, habrá un tono de aviso de voz y luego podrá empezar a disfrutar de la música.

www.Herdiotech.com

2
Español

Garantía de Calidad

Sobre los materiales y la mano de obra de todos los productos de electrónica de audio de Herdio, se proporciona la garantía limitada de un año. El cliente se debe presentar un comprobante de compra al hacer un reclamo. Durante el período de garantía, Herdio reemplazará las piezas dañadas de forma gratuita, reparará la mano de obra del producto y el cliente no tendrá que pagar los costos de mano de obra.

Plan de Garantía Extendida de 1 año

¿Cómo puede extender el período de garantía del producto comprado por 1 año? Solo necesita subir comentarios sobre el producto en línea. Luego regístrese en Herdiotech.com o envíe un correo electrónico a warranty@Herdiotech.com, el contenido del correo electrónico incluye nombre, dirección, número de teléfono y enlace de comentario del producto.

www.Herdiotech.com

3
Español