

Data Sheet

CUSTOMER: _____

MODEL NAME: _____

CUSTOMER P/N: _____

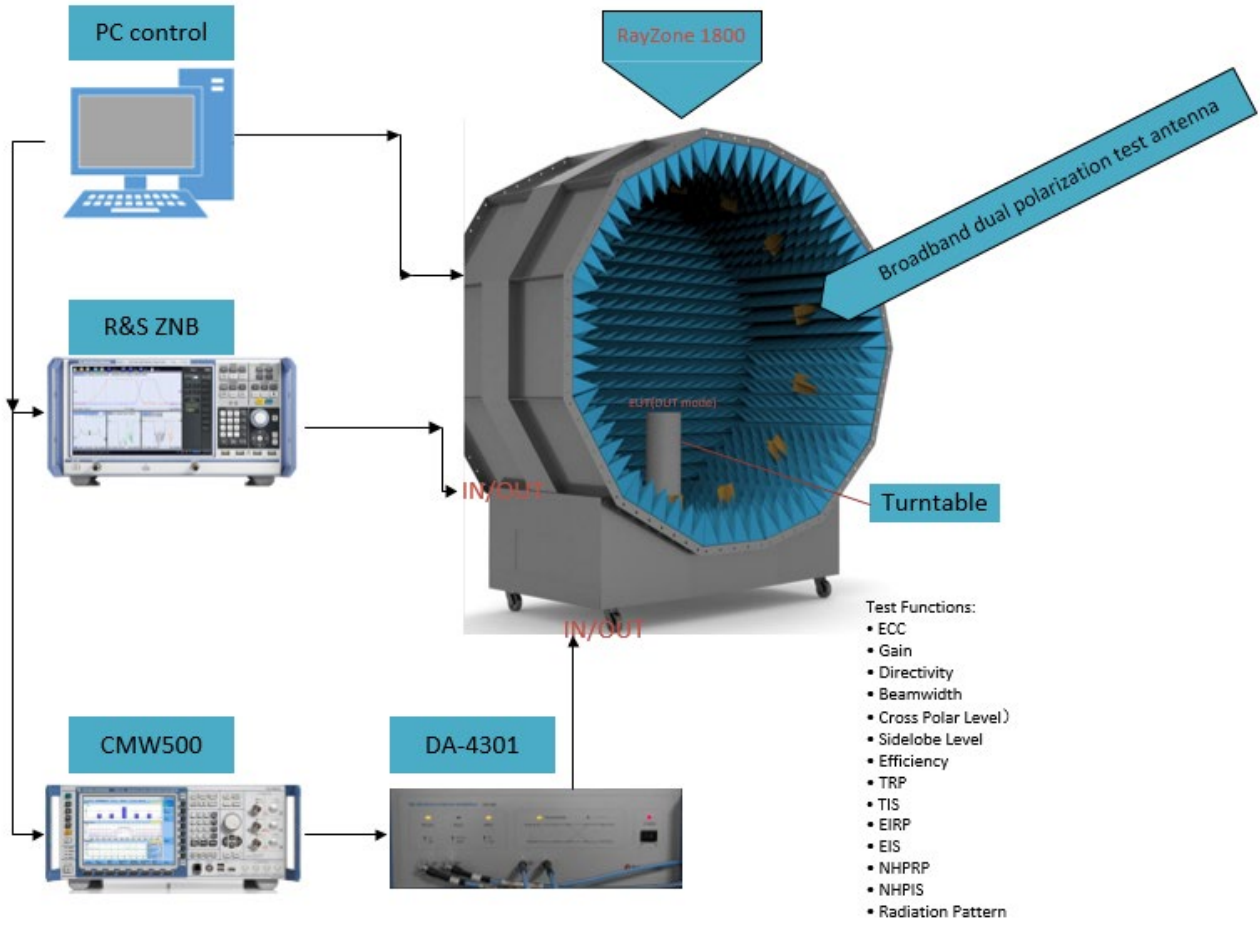
ICT P/N: _____ (Brand name: Top-link / Model Name: 24001136)

| APPROVED | |
|--|---------------------|
| MANUFACTURER | CUSTOMER |
| <p>Shenzhen Top-link Technologies Co.,Ltd Bld.1, 11, Furui Rd., Fuhai Street, BaoAn District, Shenzhen City,GuangDong Province, China</p> | |
| <i>PREPARED BY:</i> | <i>APPROVED BY:</i> |
| <i>CHECK BY:</i> | |
| <i>APPROVED BY:</i> | |

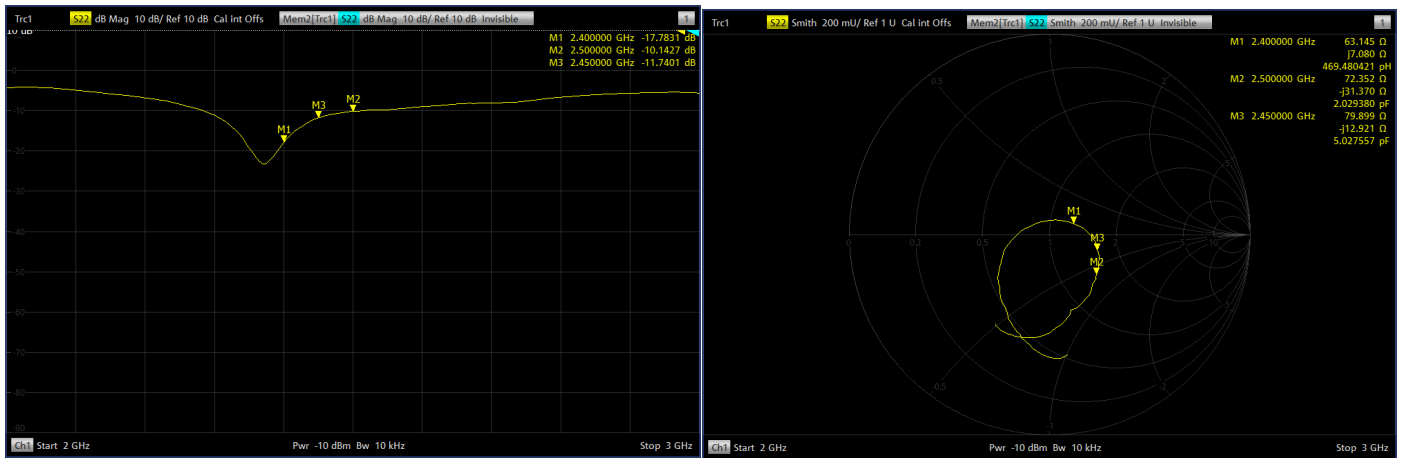
Description

Specifications

| | | |
|-------------------|--|-----------|
| Antennas Type | Monopole Antenna for Bluetooth application | |
| Impedance | 50Ω | |
| Polarization | Linear | |
| Radiation pattern | Omni-directional | |
| S11 | 2.40~2.50 GHz | -17.78Min |
| Peak EIRP | 2.40~2.50 GHz | 1.24dB |
| Peak Gain | 2.40~2.50 GHz | 1.24dBi |
| Min EIRP | 2.40~2.50 GHz | -14.70dBi |
| Average Gain | 2.40~2.50 GHz | 0.88dBi |



Circuit Parameter

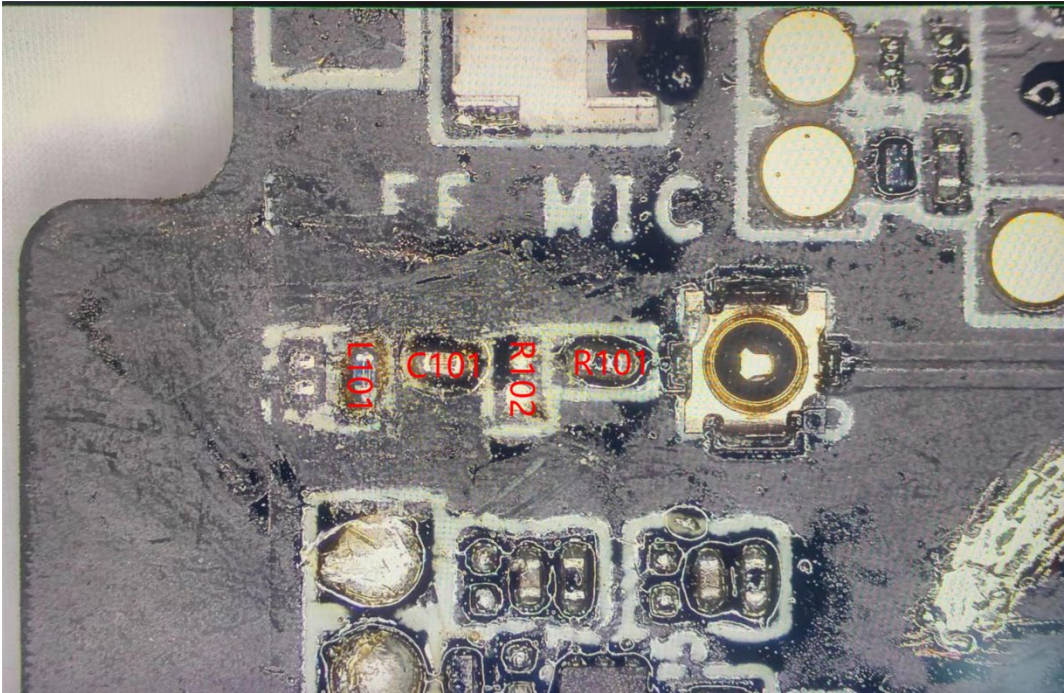


Passive Test Result

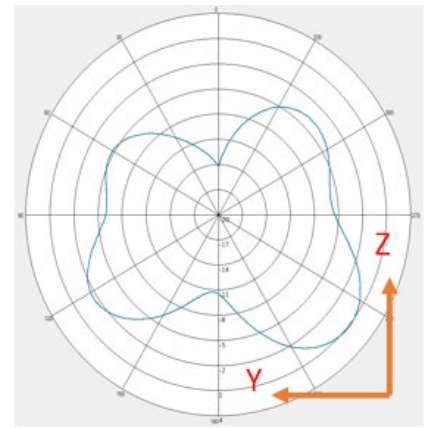
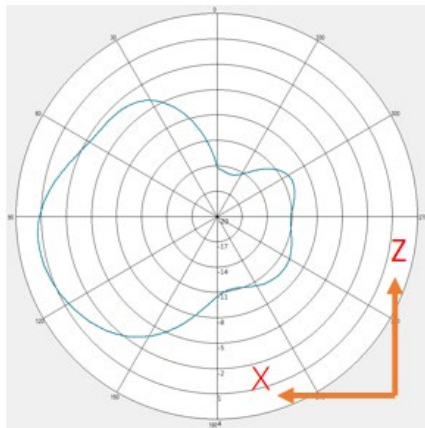
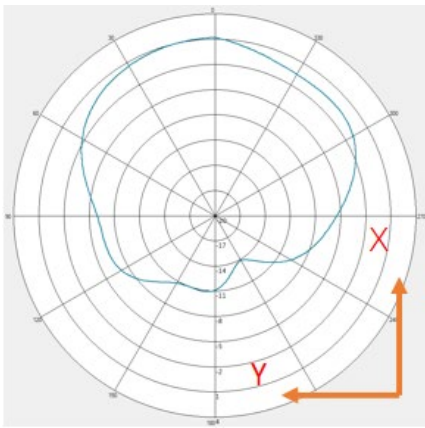
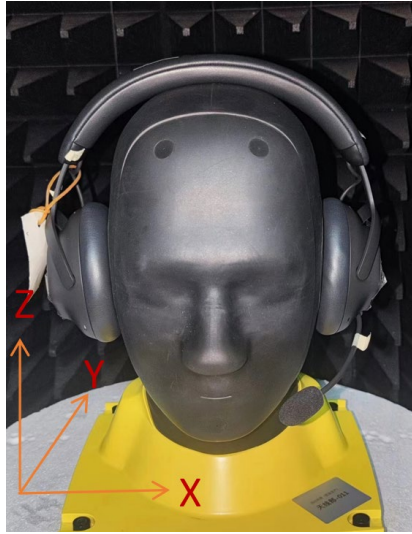
| Frequency(MHz) | Efficiency(%) | PeakEIRP | MinEIRP |
|----------------|---------------|----------|---------|
| 2400 | 35.89 | 0.16 | -14.29 |
| 2410 | 37.15 | 0.53 | -14.48 |
| 2420 | 37.31 | 0.62 | -14.70 |
| 2430 | 38.24 | 0.82 | -14.69 |
| 2440 | 39.47 | 1.09 | -14.56 |
| 2450 | 40.93 | 1.24 | -14.46 |
| 2460 | 41.12 | 1.20 | -14.46 |
| 2470 | 40.51 | 1.19 | -14.42 |
| 2480 | 39.96 | 1.09 | -14.38 |
| 2490 | 40.48 | 0.92 | -14.28 |
| 2500 | 39.81 | 0.80 | -14.34 |

Matching Circuit:

match: R101=0 Ω R102=Null C101=1.3pF L101=4.3nH



Antenna Pattern



Test procedure and Antenna photo

Parameters (R8S_ZNB8/Passive/)

Test Setup

Trace Name : S21

Power : 0 dB

Bandwidth : 0.3 KHz

Average Factor : 1

Test Mode : Log

Skip Calibration : False

Angular Coordinator Setup

Phi

Step : 30

Theta(Ant No.)

Start : 0

End : 180

Step : 30

Display Setup

Display Frequency Mode : Auto

Display Frequency : MHz

Frequency List

Test Method : Linear Import Clear

| | Start(MHz) | End(MHz) | Step(MHz) |
|---|------------|----------|-----------|
| 1 | 2400 | 2500 | 10 |
| 2 | | | |

Added Pathloss Correction

Correction Method : None

