

# Data Sheet

CUSTOMER: \_\_\_\_\_

MODEL NAME: \_\_\_\_\_ AW720H

CUSTOMER P/N: \_\_\_\_\_

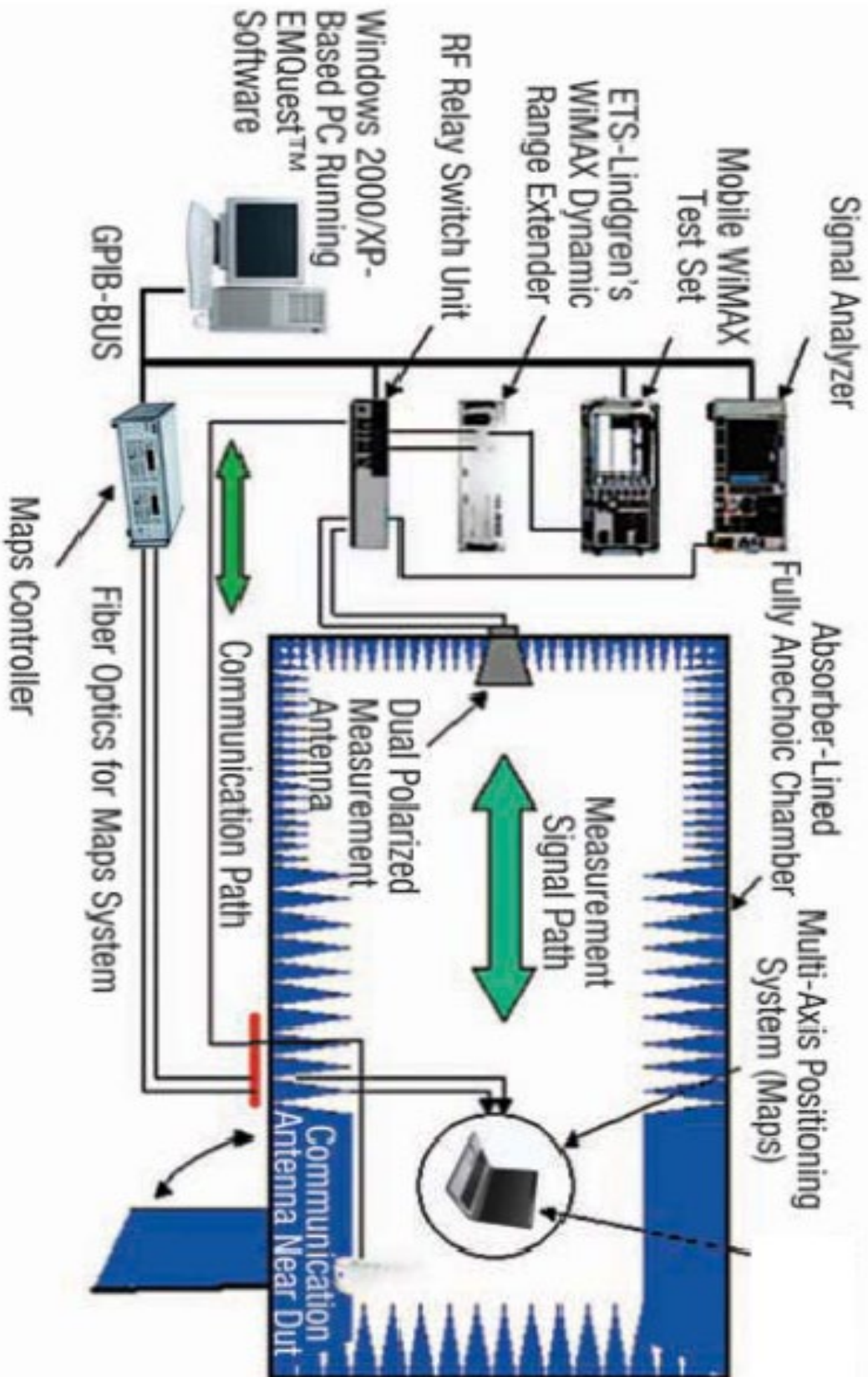
ICT P/N: \_\_\_\_\_ 深聯 26FA91206G01

<b>APPROVED</b>	
MANUFACTURER	CUSTOMER
<i>PREPARED BY:</i>	<i>APPROVED BY:</i>
<i>CHECK BY:</i>	
<i>APPROVED BY:</i>	

# Description

## Specifications

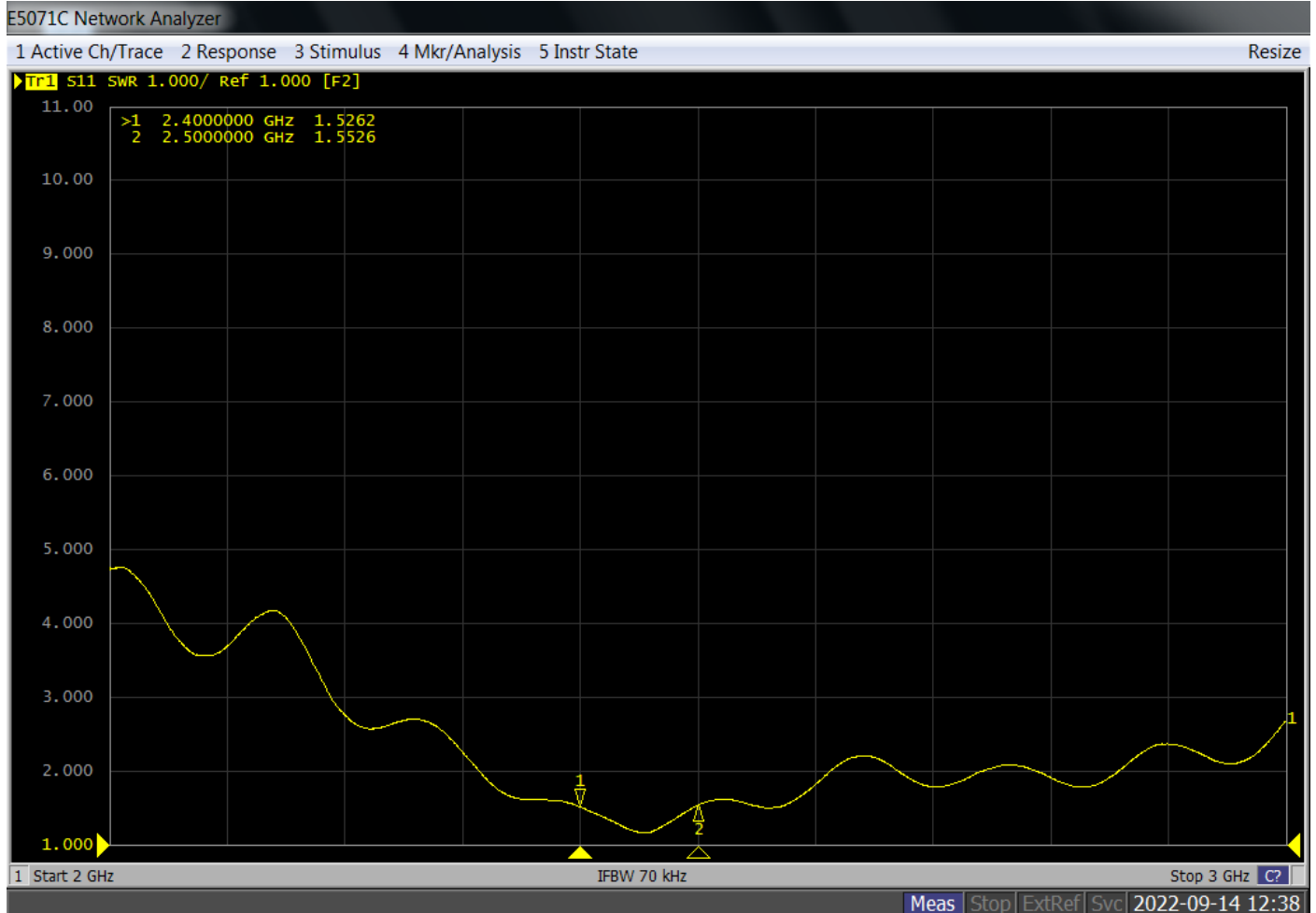
Antennas Type	PIFA Antenna for Bluetooth application	
Impedance	50Ω	
Polarization	Linear	
Radiation pattern	Omni-directional	
VSWR	2.40~2.50 GHz	3.00 Max
Peak gain Headphone w head	2.40~2.50 GHz	-1.8 dBi



# Performance Data

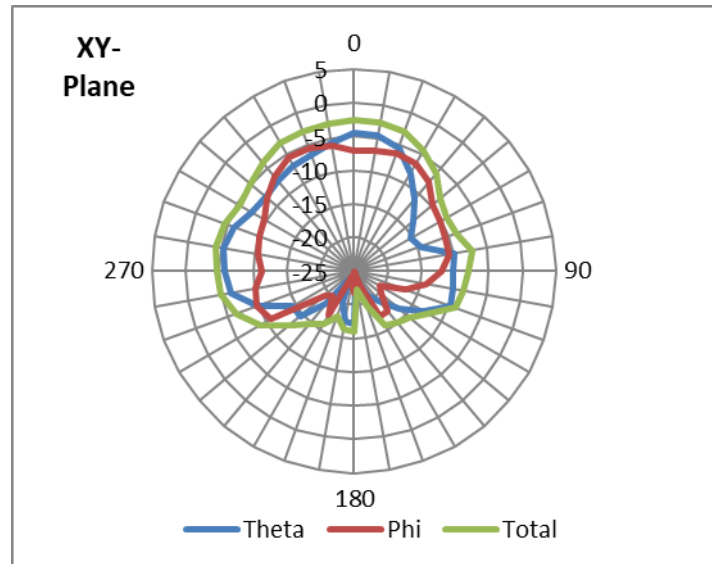
## VSWR

Headphone w head



## Radiation pattern (w head)

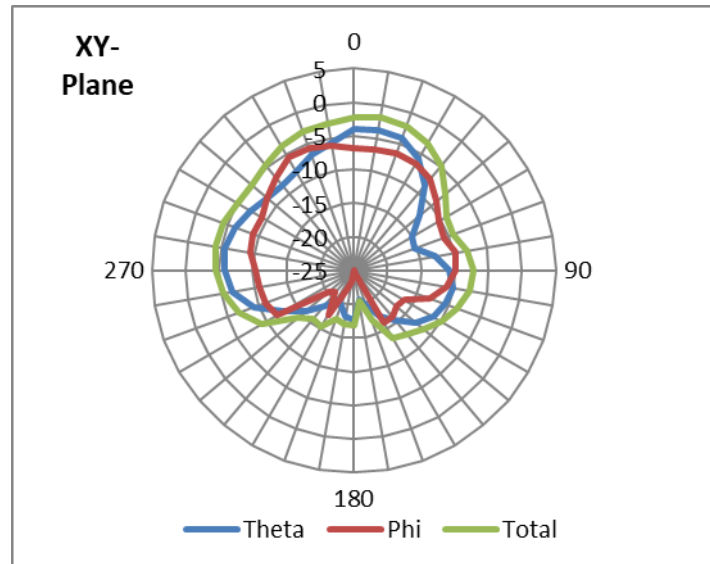
Antenna: 2400MHz



Frequency(MHz)	2400
Horizontal peak gain (dBi)	-4.3
Vertical peak gain (dBi)	-5.5

# Radiation pattern (w head)

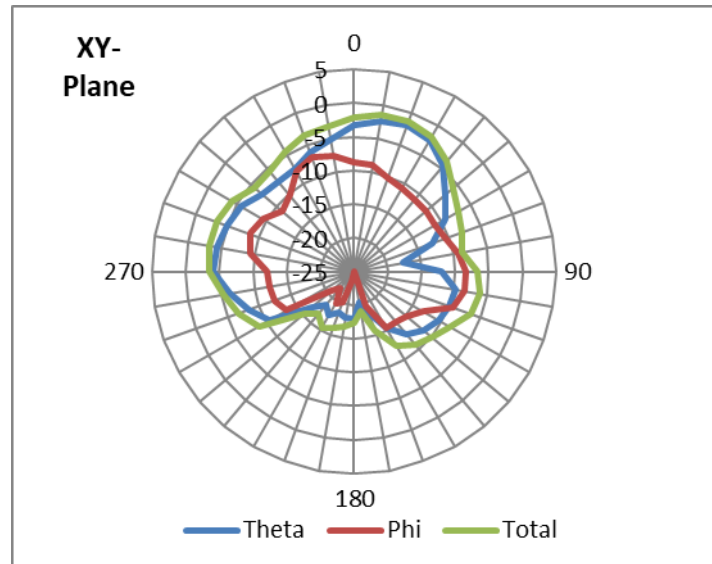
Antenna: 2450MHz



Frequency(MHz)	2450
Horizontal peak gain (dBi)	-3.8
Vertical peak gain (dBi)	-5.6

# Radiation pattern (w head)

Antenna: 2500MHz



Frequency(MHz)	2500
Horizontal peak gain (dBi)	-1.8
Vertical peak gain (dBi)	-6.9

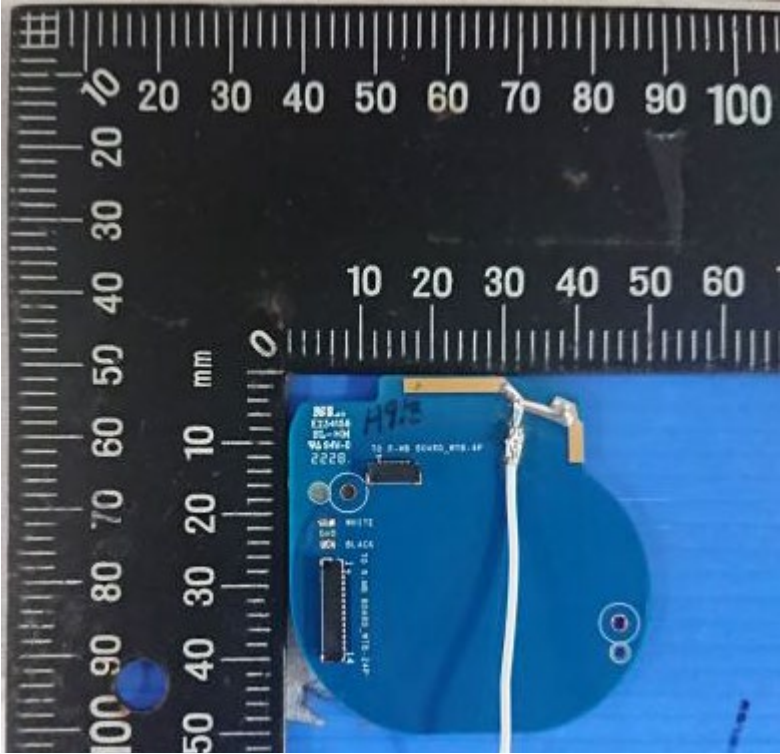
## Gain Table (dBi)(w head)

Frequency (MHZ)	Peak Gain		3D Gain
	Horizontal (dBi)	Vertical (dBi)	Efficiency [%]
2400	-4.3	-5.5	27.86
2450	-3.8	-5.6	27.08
2500	-1.8	-6.9	31.27



# Description

## Antenna Picture1



## Antenna Picture2

