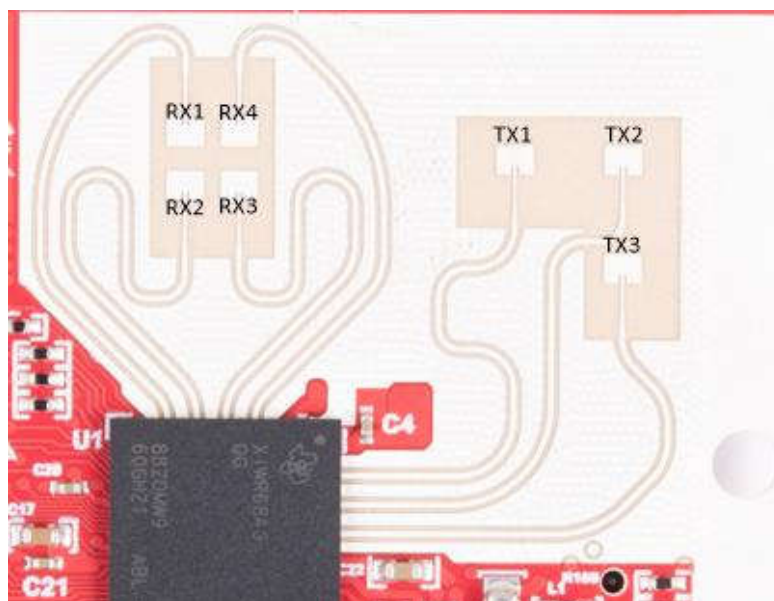
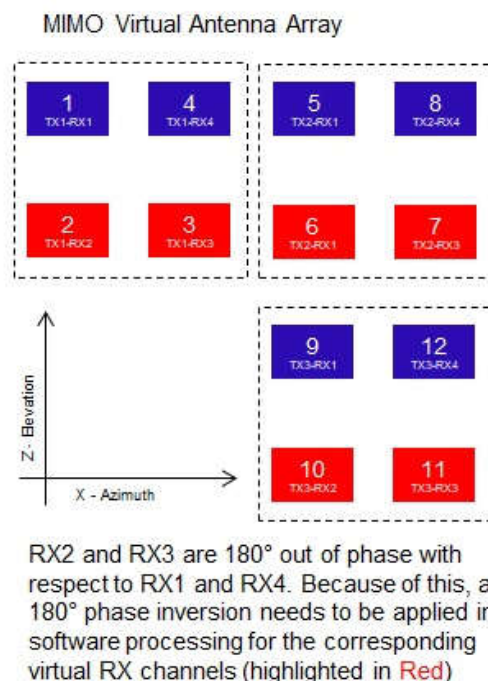
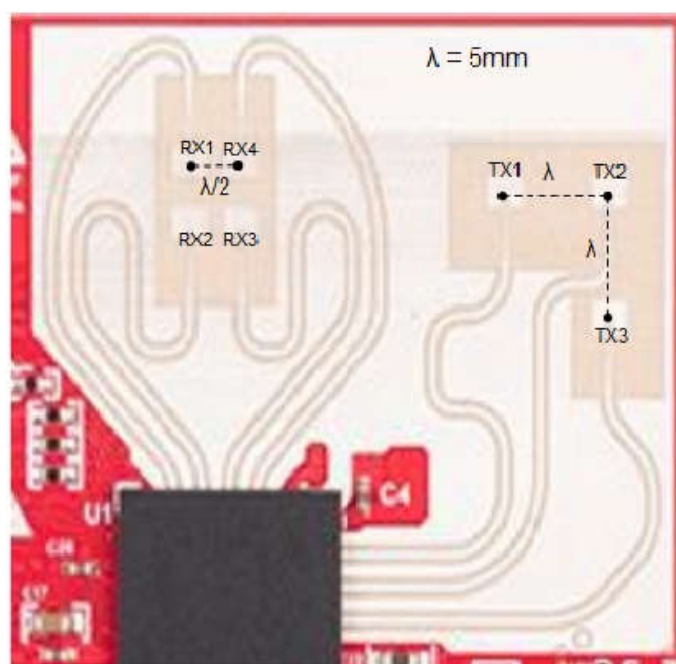


The IWR6843ISK-ODS includes on-board-etched short range antennas (approximately 12-15 meters for people detection) for the four receivers and three transmitters. [Figure 3-16](#) shows the PCB antennas arrangement. This provides equal angular resolution both in Azimuth and Elevation directions with the help of  $4 \times 3$  virtual antennas positions.

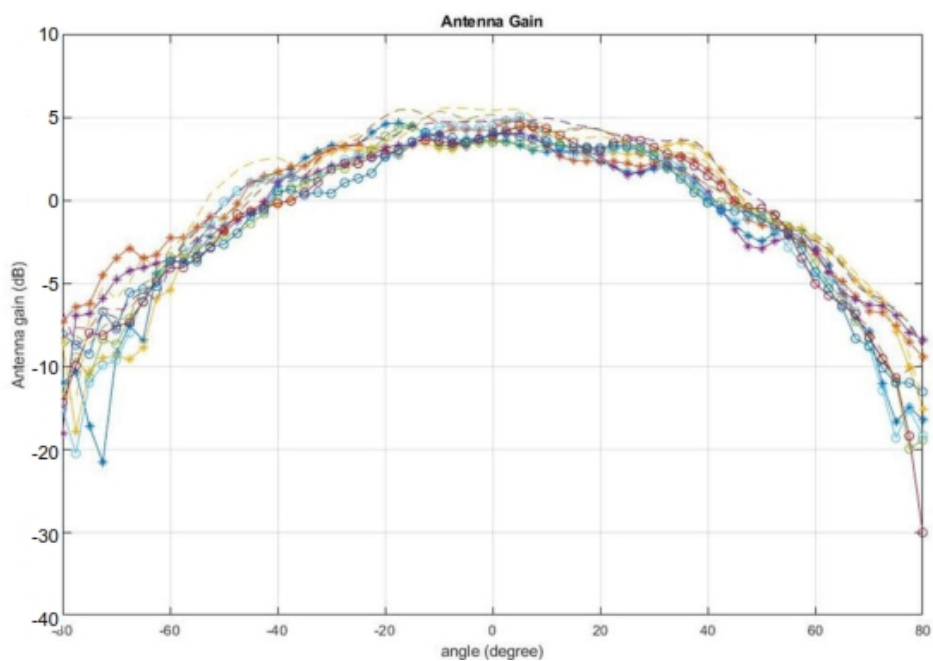


**Figure 3-16. IWR6843ISK-ODS PCB Antenna**



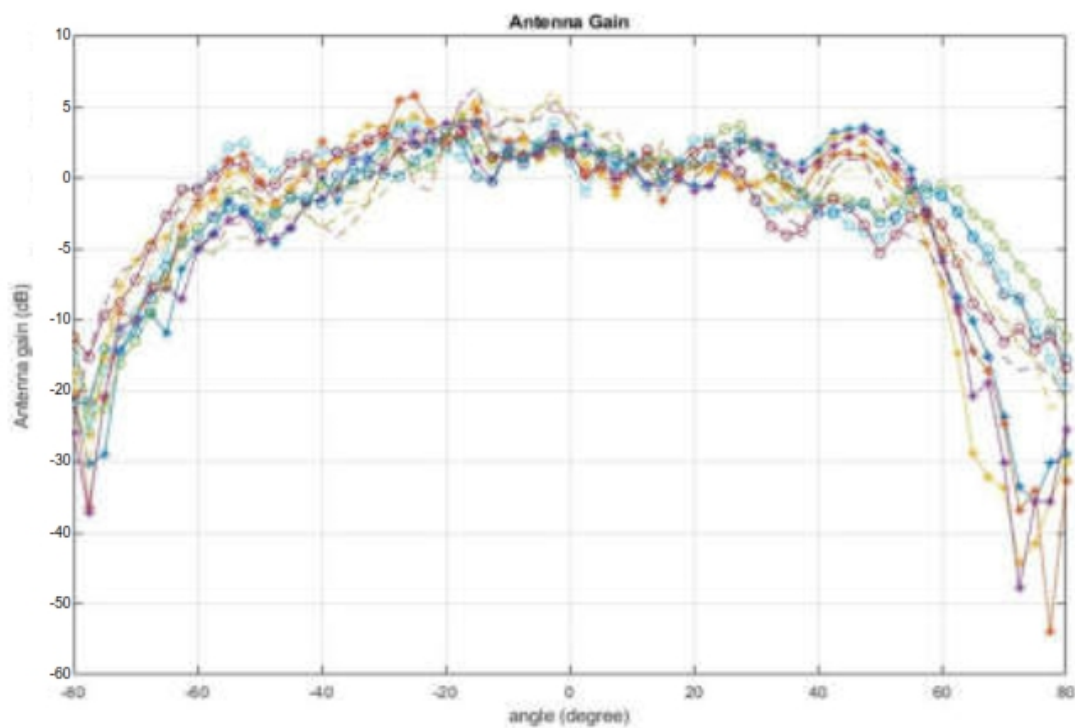
**Figure 3-17. IWR6843ISK-ODS antenna placement MIMO array**

Figure 3-18 shows combined Antenna Radiation pattern in the Azimuth plane for all the transmitter and receiver pairs together (TX[1-3]-RX[1-4]).



**Figure 3-18. Measured Azimuthal Radiation Pattern for All Tx to Rx Pairs (All 12 Virtual Antenna Pairs Included)**

Figure 3-19 shows the combined Antenna Radiation pattern in the Elevation plane for all the transmitter and receiver pairs together, TX[1-3]-RX[1-4].



**Figure 3-19. Measured Elevation Radiation Pattern for All Tx to Rx Pairs (All 12 Virtual Antenna Pairs Included)**