

FCC Compliance Statement

This device complies with Part 15 of the FCC Rules. Operation is subject to the following two conditions:  
 (1) this device may not cause harmful interference, and  
 (2) this device must accept any interference received, including interference that may cause undesired operation.  
 Changes or modifications not expressly approved by the party responsible for compliance could void the user's authority to operate the equipment.

NOTE: This equipment has been tested and found to comply with the limits for a Class B digital device, pursuant to Part 15 of the FCC Rules. These limits are designed to provide reasonable protection against harmful interference in a residential installation. This equipment generates, uses instructions, may cause harmful interference to radio communications. However, there is no guarantee that interference will not occur in a particular installation. If this equipment does cause harmful interference to radio or television reception, which can be determined by turning the equipment off and on, the user is encouraged to try to correct the interference by one or more of the following measures:  
 - Reorient or relocate the receiving antenna.  
 - Increase the separation between the equipment and receiver.  
 - Connect the equipment into an outlet on a circuit different from that to which the receiver is connected.  
 - Consult the dealer or an experienced radio/TV technician for help.

FCC Radiation Exposure Statement  
 The device has been evaluated to meet general RF exposure requirement. The device can be used in portable exposure condition without restriction

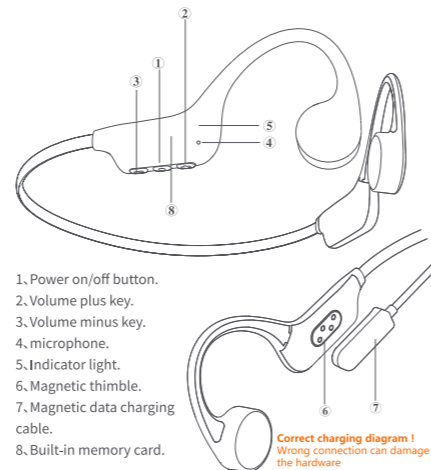
Product specifications

Music play time	10H&70% volume (Bluetooth mode)
RAM	Built-in 16G
Charging time	2h
BT version	5.3
Battery	180mAh
Call	-42dB
Water proof	Full waterproof design IP68
Connection distance	Bluetooth 10 meters
Charging voltage	5V
Protocol	A2DP,AVRCP,HSP,HFP

Packing list

- Bone conduction wireless headphones\*1
- Magnetic data charging cable\*1
- Manual\*1

Summary of button functions



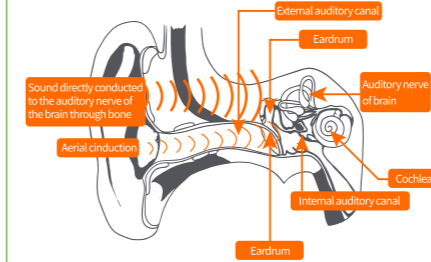
Controls

Function	Method of operation
Power on	Press and hold the power button for about 3 seconds, the LED will flash once in white and blue.
Power Off	Press and hold the power button for about 3 seconds until the LED goes out.
Pairing	Power on the earphones, it enters the Bluetooth pairing state, and S6 is searched in the Bluetooth settings of the mobile phone. After the connection is successful, the blue indicator light flashes slowly, and the blue light goes out when playing music.
Replace phones	Disconnect the Bluetooth of the currently paired phones, the earphones indicator light flashes alternately in red and blue, and other phones can search for S6, click connect.
Charging	After connection the phone will display the earphones power, if low battery alarm, it means that it needs to be charged. Use a 5V charger to connect to a magnetic charging cable to charge.
Data transmission	Turned on the earphones, connected data charging cable to computer USB interface. When the computer displays the USB flash drive icon in about 5 seconds, you can copy or delete music normally
MP3 Bluetooth	Press the power button twice to complete the mode conversion.
on/off keying	Long press the power button for 3 seconds to turn on and off, press the power button twice to switch between MP3 or Bluetooth mode. When a call comes in, short press to answer the call. Short press to hang up during a call.

Controls

Function	Method of operation
Plus button	Short press the plus button to increase the volume, press the plus button twice for the next song, long press the plus key to activate Live phone Voice Assistant. (long press in MP3 mode is invalid)
Minus button	Short press the minus button to decrease the volume, press the minus button twice to the previous song, and long press the minus button to enter game mode (35ms), press the minus button 3 times to switch between Chinese and English. (Long press in MP3 mode is invalid)
Indicator	*Alternating red and blue: Bluetooth pairing status *Blue slow flashing: successful connection, waiting for playback status *Steady red light: charging. *Steady green light: fully charged *Blue light flashing: data transmission mode *Green light flashing: MP3 mode waiting to be played *Blue light breathing: Bluetooth gaming low latency mode

Principles of bone conduction



Most of the sound we hear is the result of sound waves passing through our eardrum to make it vibrate so that the sound waves can be conducted to the internal auditory canal.  
 The other way is that the sound waves are directly conducted to the internal auditory canal through the vibration of the bone instead of eardrum. This is another way of people hearing their own sound and this sound conduction is called bone conduction.

Precautions



How to wear

Hang the headphone behind your neck with both speakers clinging to your cheekbones. After that, adjust it until you feel comfortable.

Attentions:

- Please wear the bone-conduction speakers of the headphone at your cheekbones before your ears and do not put them in your ears.
- Listening to music for an excessive long time may make you feel uncomfortable, please try to use a medium volume instead of a big one.
- No matter how the volume is, please do not make it prevent you from hearing the surrounding sounds. Please take care when using the headphone.
- Do not throw, press the headphone or put it in the water.
- The headphone should keep away from fire, water and high voltage devices.
- It is not for children's use as it contains small parts.
- Please do not treat it as domestic waste. Instead, send it to your electrical and electronic recycling station. If there is any injury or property loss due to violation of the above contents, we will not bear any responsibility.