



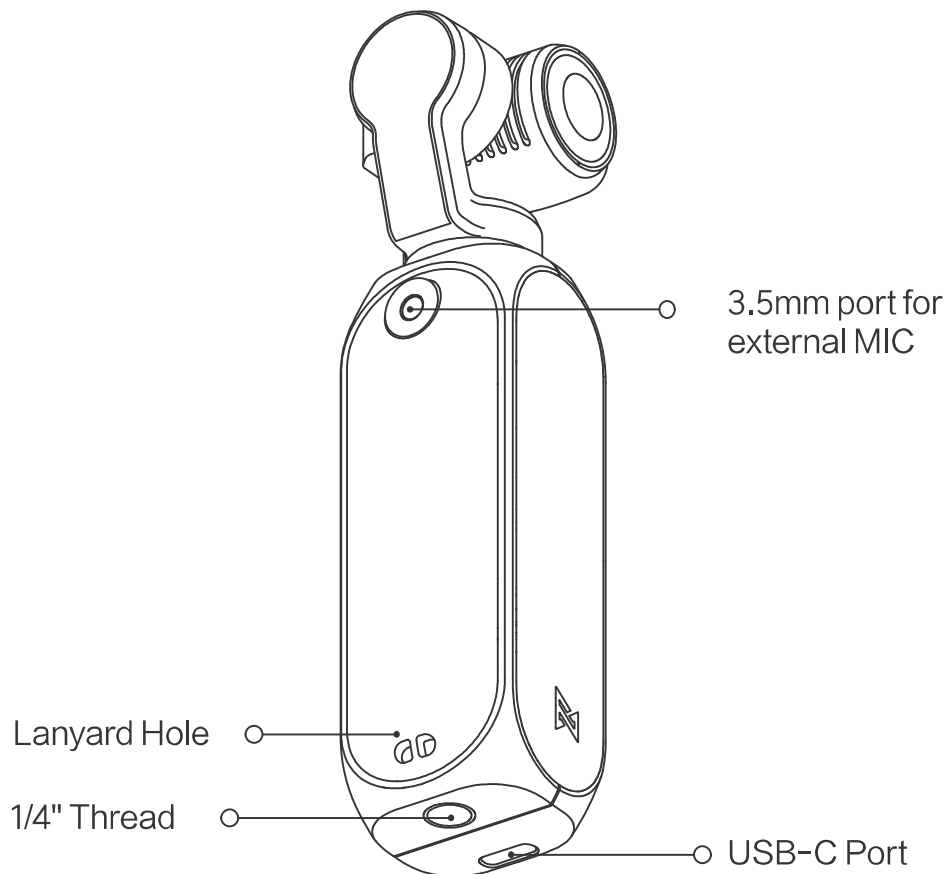
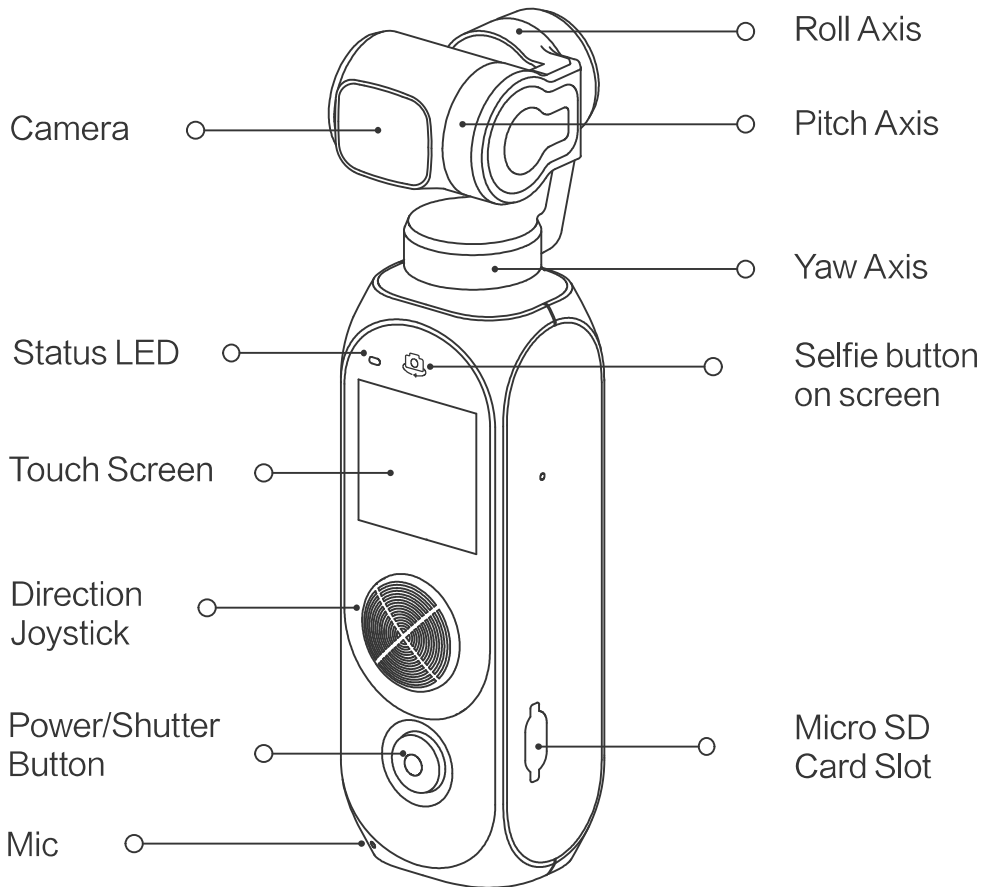
掌上云台相机2 Pro使用说明书

使用本产品前请仔细阅读本说明书

PALM 2 Pro Gimbal Camera User Manual

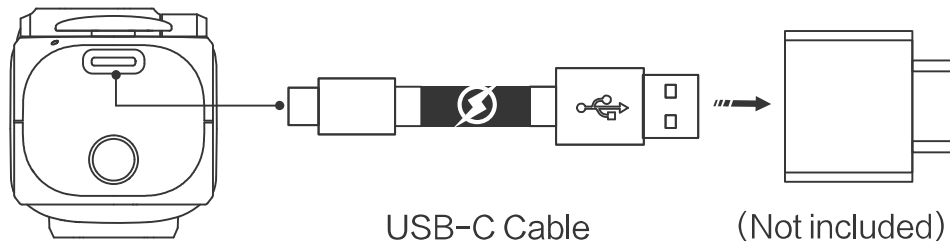
Please read this manual carefully before use

1.Product Introduction



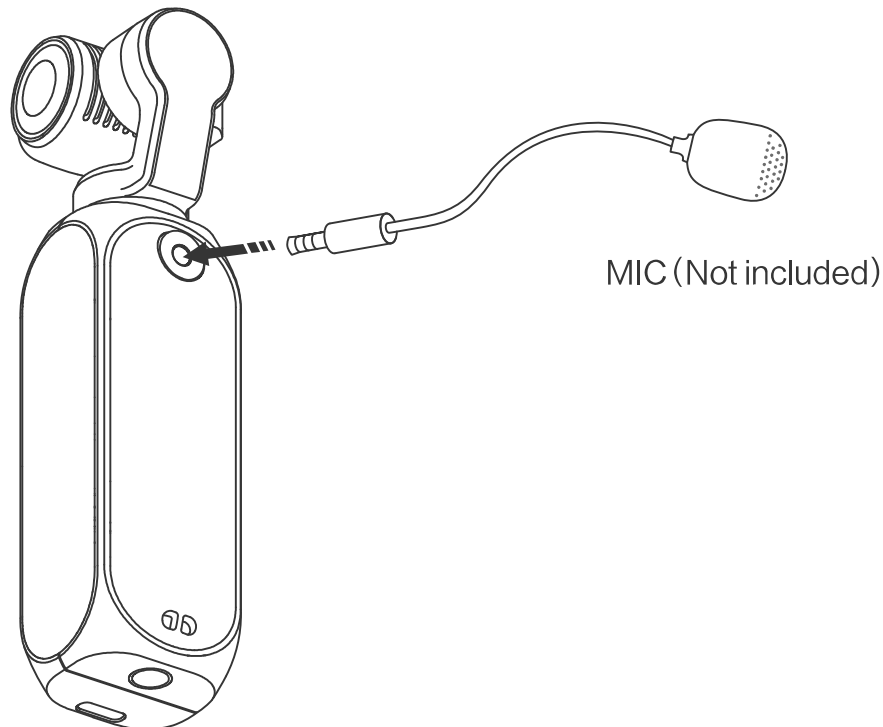
2. Charging

To charge PALM2, please use the included USB cable to connect it with the USB-C port in maximum charging current of 5V2A. While charging, the status LED is always on. When the battery is fully charged, the status LED is off.



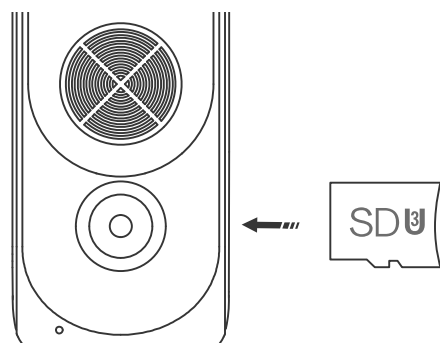
3. The equipment of external MIC

Please equip the MIC as shown.



4. Inserting the MicroSD Card

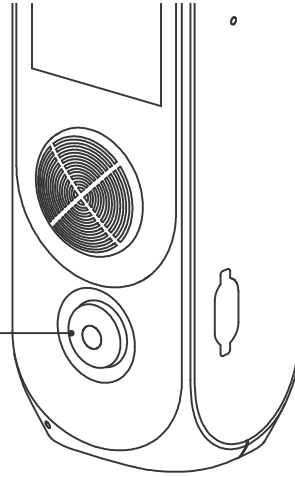
Please insert the MicroSD Card as shown. It is recommended to use a microSD card with or over a UHS-III Speed Grade 3 rating. The PALM 2 supports atmost SD card with 256G(not included), and you can format the SD card on PALM 2.



5. Operations

1. Power/Shutter Button

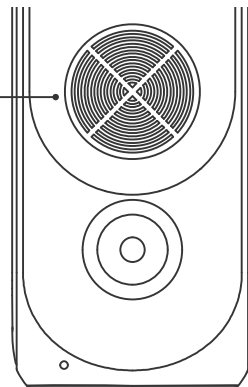
Power/Shutter Button



Status	Instruction
Long press	Turn on or turn off the PALM
Short press	Take a capture according to current shooting mode
Double click	To recenter the gimbal

2. Direction joystick

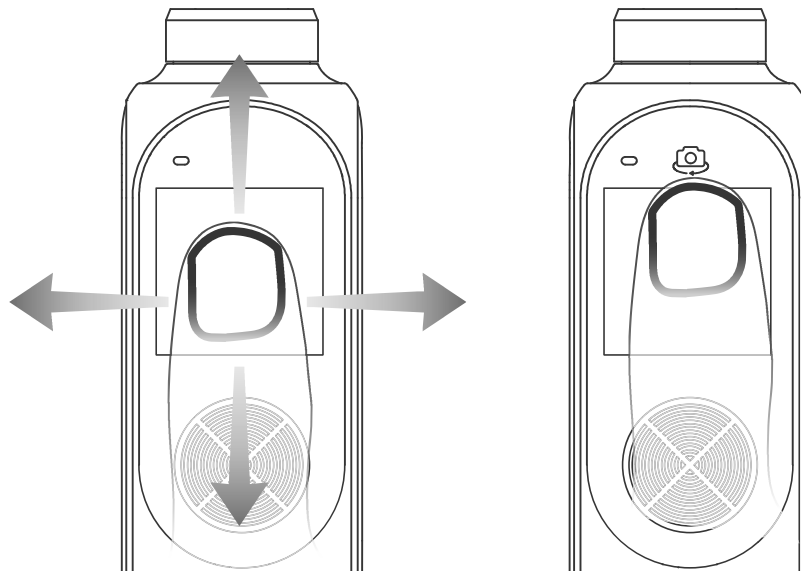
Direction joystick



Status	Instruction	Remarks
Move up	To control the gimbal camera move up	Mode 1
Move down	To control the gimbal camera move down	Mode 1
Move left	To control the gimbal camera move left	Mode 1
Move right	To control the gimbal camera move right	Mode 1
Move up	ZOOM +	Mode 2
Move down	ZOOM -	Mode 2
Move left	EV -	Mode 2
Move right	EV+	Mode 2

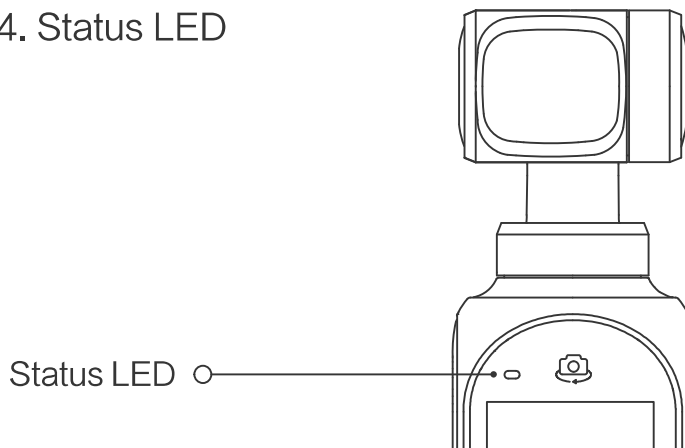
P.S. Click the "◀▶" on the top right of screen to switch mode 1 and mode 2.

3. Touch Screen



Status	Instruction
Swipe right/left	To switch shooting mode
Swipe down	To enter setting mode
Swipe up	To enter media library
Double click	Turn on / turn off Face Tracking
Double click the selfie button	To switch selfie mode
Long click the selfie button	To center the gimbal

4. Status LED



Status	Instruction
Green light is on	Normal
Green light flashes	Recording
Red light is on	Low battery or the gimbal is abnormal
Red light flashes	System is abnormal
Red and green light alternatively flash	Firmware is updating

6. Downloading APP

Please scan the QR code or search for downloading the FIMI PLAY APP in APP Store or Google Play



7. Maintenance and Calibration

1. The PALM 2 enters the self-check when it is powering.
2. Gimbal camera is a high-precision control device.
Please do not drop it or have it hit by external force.
And please ensure that the gimbal doesn't be blocked by outside forces when it is moving. Otherwise, the machine might be damaged and be led to abnormal operations.
3. Do not place the battery near heat. Lithium battery's capacity reduces significantly in low temperature conditions. Please do not use the PALM 2 if the temperature is below 0 celsius degree.

9. Basic Specification

Name: PALM 2 Gimbal Camera

Model: YTXJ07FM

Dimensions: 32.5*35.5*132.5mm

Net Weight: 145g (accessories are not included)

Precision Control: $\pm 0.005^\circ$

Rolling Angle: YAW: $-240^\circ \sim +60^\circ$ ROLL: $\pm 45^\circ$

PITCH: $\pm 90^\circ$

Battery Capacity: 2600 mAh

Rated Power: 9.62 W

Rated Voltage: 3.7V

Operating Temperature: $0^\circ\text{C} \sim 40^\circ\text{C}$

Wireless Connectivity: Wi-Fi IEEE 802.11b/g/n

Product standard: Q/BJFMK0006-2017

CMIIT ID: 2021DP1949

Check more detailed information in setting

This device complies with Part 15 of the FCC Rules. Operation is subject to the following two conditions:

- (1) this device may not cause harmful interference, and
- (2) this device must accept any interference received, including interference that may cause undesired operation.

Any Changes or modifications not expressly approved by the party responsible for compliance could void the user's authority to operate the equipment.

Note: This equipment has been tested and found to comply with the limits for a Class B digital device, pursuant to part 15 of the FCC Rules. These limits are designed to provide reasonable protection against harmful interference in a residential installation. This equipment generates uses and can radiate radio frequency energy and, if not installed and used in accordance with the instructions, may cause harmful interference to radio communications. However, there is no guarantee that interference will not occur in a particular installation. If this equipment does cause harmful interference to radio or television reception, which can be determined by turning the equipment off and on, the user is encouraged to try to correct the interference by one or more of the following measures:

- Reorient or relocate the receiving antenna.
 - Increase the separation between the equipment and receiver.
 - Connect the equipment into an outlet on a circuit different from that to which the receiver is connected.
 - Consult the dealer or an experienced radio/TV technician for help.
- The device has been evaluated to meet general RF exposure requirement. The device can be used in portable exposure condition without restriction.

Manufacturer: Shenzhen Fimi Robot Technology Co., Ltd.
(a Mi Ecosystem company)

Address: 2nd Floor, East Block, Tianliao Building, 1133
Xueyuan Avenue, Taoyuan Street, Nanshan District,
Shenzhen City, Guangdong Province, China

Official website: www.fimi.com

Online service: support@fimi.com