
	Name:	SKGBLEXK01 Specification					Item:	
	Type:	G	Version:	V1.0	Owner:	R&D	Security level:	Internal publish

SKGBLEXK01 Specification


Change Record

Version	Implementing Date	Change Reason	Change Description	Drafter
1.0	2022.7.28	Initial	Initial	Yulun Zhu

	Name:	SKGBLEXK01 Specification					Item:	
	Type:	G	Version:	V1.0	Owner:	R&D	Security level:	Internal publish

Catalogue

1 Parameter	3
2 Apply To	3
3 Definition Of Chip Pins	4
4 Related Record	4
5 External info. & Function	5
6 FCC & IC Statement	6


	Name:	SKGBLEXK01 Specification					Item:	
	Type:	G	Version:	V1.0	Owner:	R&D	Security level:	Internal publish

1 Parameter

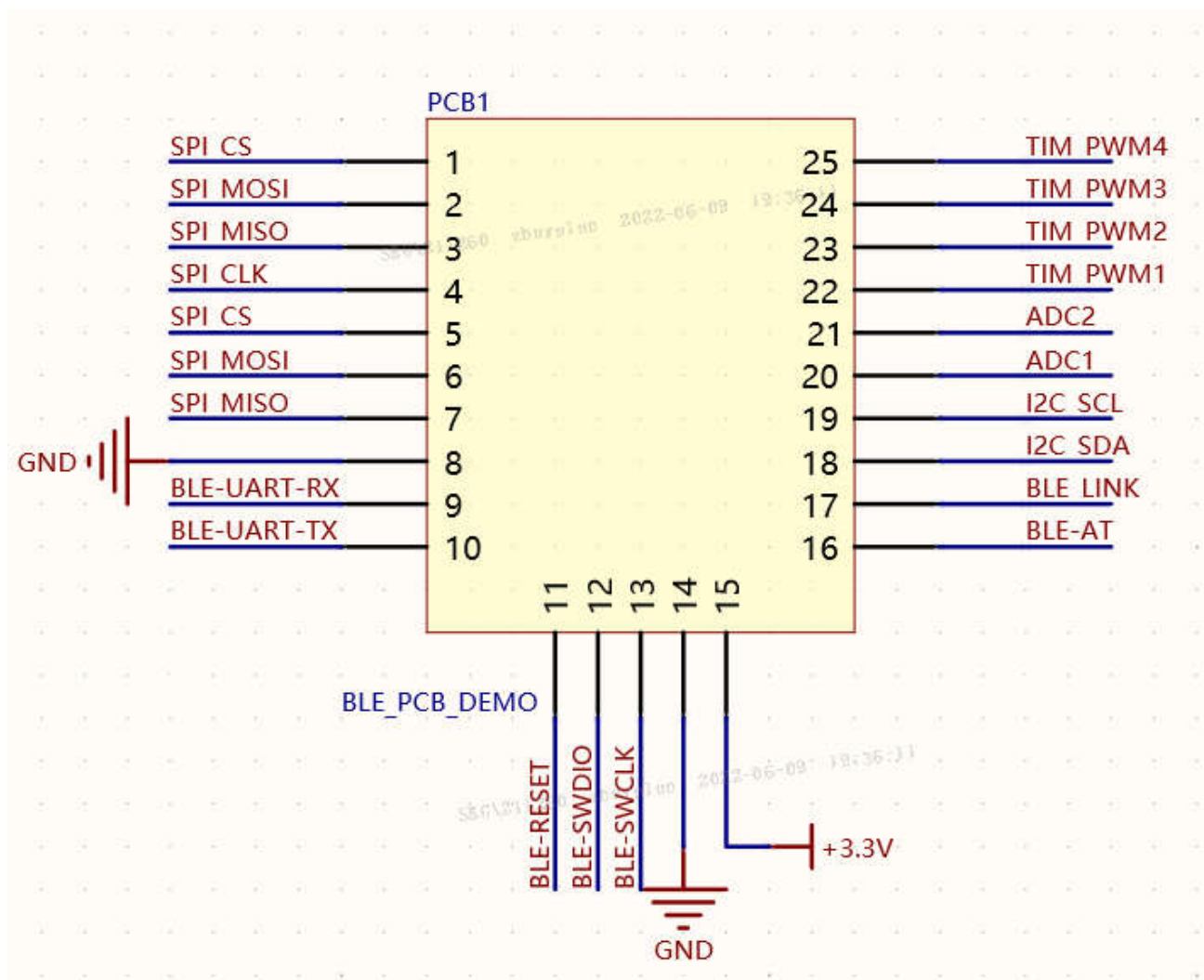
Chip Model	EFR32BG22C112F352GM32-C
Operation Voltage	3.3V
Operation Frequency	2402 MHz ~ 2480 MHz
Transmitting Power	0dbm
Receive Sensitivity	-98.9 dBm sensitivity @ 1 Mbit/s GFSK -96.2 dBm sensitivity @ 2 Mbit/s GFSK
RAM	32 KB
FLASH	512 KB
Quantity of GPIO	18
Frequency of Crystal	38.4 MHz
Module Size	11.6 * 16.4 * 2.2 mm
Packaging Type	SMT
Operating Temperature	-40℃ ~ +85 ℃
Storage Temperature	- 40 ℃ ~ +125 ℃
Antenna Gain (peak)	2.64 dBi

2 Apply To

All the Bluetooth products of SKG


	Name:		SKGBLE XK01 Specification				Item:	
	Type:	G	Version:	V1.0	Owner:	R&D	Security level:	Internal publish

3 Definition Of Chip Pins



4 Related Record

Item	Form Number	Form Name	Department	Record Retention time
NA	NA	NA	NA	NA
NA	NA	NA	NA	NA

	Name:		SKGBLEXK01 Specification				Item:	
	Type:	G	Version:	V1.0	Owner:	R&D	Security level:	Internal publish

5 External info. & Function

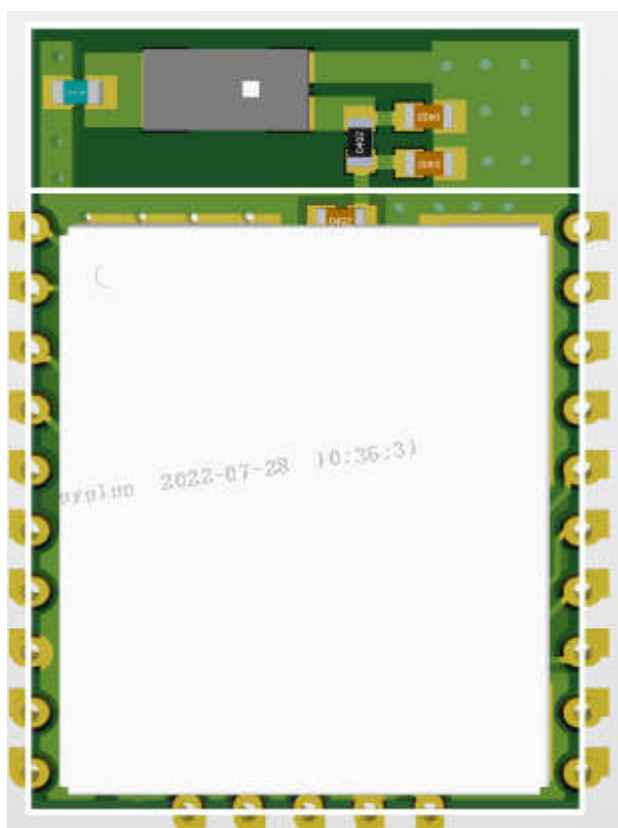
5.1 Hardware & Firmware Version


Bluetooth Module model number	SKGBLEXK01	
Hardware version	H1.1	
Firmware Version	V1.0	

5.2 External Apperance And Parameter Requirements

Mainboard PCB external size: 16.4mm(Length)*11.6mm(Width),Tolerance: $\pm 0.1\text{mm}$;

PCB Thickness: 1.2mm, Tolerance: $\pm 0.12\text{mm}$ 。 Whole Height(include Shielded enclosure): 2.2mm。



	Name:	SKGBLEXK01 Specification					Item:	
	Type:	G	Version:	V1.0	Owner:	R&D	Security level:	Internal publish

6 FCC & IC Statement

FCC Statement:

This device complies with part 15 of the FCC Rules. Operation is subject to the following two conditions:

- (1) This device may not cause harmful interference, and
- (2) this device must accept any interference received, including interference that may cause undesired operation.

Any Changes or modifications not expressly approved by the party responsible for compliance could void the user's authority to operate the equipment.

Note: This equipment has been tested and found to comply with the limits for a Class B digital device, pursuant to part 15 of the FCC Rules. These limits are designed to provide reasonable protection against harmful interference in a residential installation. This equipment generates uses and can radiate radio frequency energy and, if not installed and used in accordance with the instructions, may cause harmful interference to radio communications. However, there is no guarantee that interference will not occur in a particular installation. If this equipment does cause harmful interference to radio or television reception, which can be determined by turning the equipment off and on, the user is encouraged to try to correct the interference by one or more of the following measures:

- Reorient or relocate the receiving antenna.
- Increase the separation between the equipment and receiver.
- Connect the equipment into an outlet on a circuit different from that to which the receiver is connected.
- Consult the dealer or an experienced radio/TV technician for help.

FCC Radiation Exposure Statement

This modular complies with FCC RF radiation exposure limits set forth for an uncontrolled environment.

This transmitter must not be co-located or operating in conjunction with any other antenna or transmitter.

The module is limited to OEM installation only

The OEM integrator is responsible for ensuring that the end-user has no manual instructions to remove or install module

If the FCC identification number is not visible when the module is installed inside another device, then the outside of the device into which the module is installed must also display a label referring to the enclosed module. This exterior label can use wording such as the following: Contains Transmitter Module

FCC ID:2AYVT-SKGBLEXK01 Or Contains FCC ID: 2AYVT-SKGBLEXK01


When the module is installed inside another device, the user manual of the host must contain below warning statements;

1. This device complies with Part 15 of the FCC Rules. Operation is subject to the following two conditions:

- (1) This device may not cause harmful interference.
- (2) This device must accept any interference received, including interference that may cause undesired operation.

2. Changes or modifications not expressly approved by the party responsible for compliance could void

All the contents in this file belongs to SKG Health Technologies Co., Ltd. And its subsidiary corporation, No copy been Allowed before authorized by SKG.

	Name:	SKGBLEXK01 Specification					Item:	
	Type:	G	Version:	V1.0	Owner:	R&D	Security level:	Internal publish

the user's authority to operate the equipment.

The devices must be installed and used in strict accordance with the manufacturer's instructions as described in the user documentation that comes with the product.

Any company of the host device which install this modular with limit modular approval should perform the test of radiated emission and spurious emission according to FCC part 15C : 15.247 and 15.209 requirement, Only if the test result comply with FCC part 15C : 15.247 and 15.209 requirement, then the host can be sold legally.

Antennas:

Type	Gain
Ceramic Antenna	2.64dBi

The antenna is permanently attached, can't be replaced. Trace antenna designs: Not applicable.

ISED Statement:

This device contains licence-exempt transmitter(s)/receiver(s) that comply with Innovation, Science and Economic Development Canada's licence-exempt RSS(s). Operation is subject to the following two conditions:

- (1) This device may not cause interference.
- (2) This device must accept any interference, including interference that may cause undesired operation of the device.

L'émetteur/récepteur exempt de licence contenu dans le présent appareil est conforme aux CNR d'Innovation, Sciences et Développement économique Canada applicables aux appareils radio exempts de licence. L'exploitation est autorisée aux deux conditions suivantes :

- (1) L'appareil ne doit pas produire de brouillage;
- (2) L'appareil doit accepter tout brouillage radioélectrique subi, même si le brouillage est susceptible d'en compromettre le fonctionnement.

This transmitter must not be co-located or operating in conjunction with any other antenna or transmitter. Cet émetteur ne doit pas être Co-placé ou ne fonctionnant en même temps qu'aucune autre antenne ou émetteur.

Please notice that if the ISED certification number is not visible when the module is installed inside another device, then the outside of the device into which the module is installed must also display a label referring to the enclosed module. This exterior label can use wording such as the following: "Contains IC: 28042-SKGBLEXK01" any similar wording that expresses the same meaning may be used.

Veuillez noter que si le numéro de certification ISDE n'est pas visible lorsque le module est installé à l'intérieur d'un autre dispositif, alors l'extérieur du dispositif dans lequel le module est installé doit également afficher une étiquette se référant au module fermé. Cette étiquette extérieure peut utiliser des libellés tels que: «contient IC: 28042-SKGBLEXK01» toute formulation similaire qui exprime la même signification peut être utilisée.