

反面

折位线

折位线

折位线

折位线

折位线

折位线

## Quick Installation Guide Ceiling Mount AP

### 1/Product introduction

#### LED Indicator definition

Front	Back
One LED Indicator	SYSTEM WPS LED
Green Light	Normal Status
Blue Light	System boots up successfully
Three LED Indicator	SYSTEM WPS LED
Green Light	Normal Status
Blue Light	System boots up successfully
Red Light	System reset default
Yellow Light	2.4G Wireless boots up successfully
Orange Light	5.8G Wireless boots up successfully

\*The number of LEDs for different models of ceiling mount AP will be different, please refer to the actual product.

#### Ports Definition

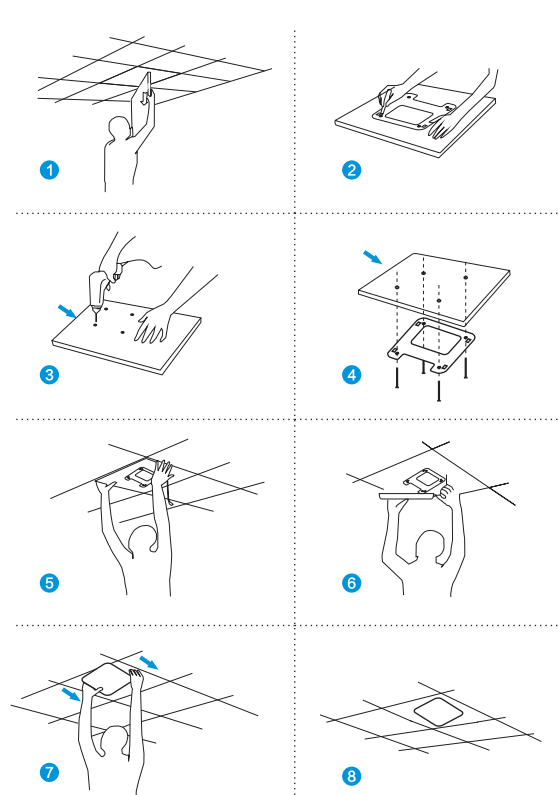
Ports & Buttons	Explanation
DC Socket	Power input port
LAN Port	LAN interface, will bring up when Ethernet cable is connected to RJ45 LAN ports
Reset Button	Reset device to factory default settings, press for 10 seconds when powered on, device will reset
WPS Button	Connect to wireless through WPS, modem or WPS broadband. Under AP and repeater mode, WPS port will be changed to LAN port
LAN Port	LAN port, can connect LAN device

\*The interface for different models of products may be different, the above diagram is only for reference, please refer to the actual product.

#### Operation environment

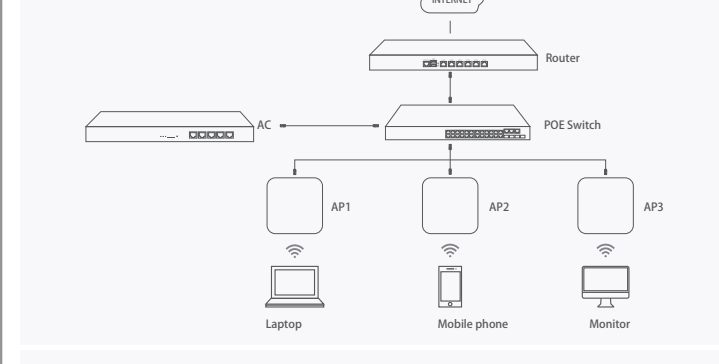
Indoor	Suitable for safe use in areas below 2000 meters above sea level
Outdoor	Only suitable for safe use in non-tropical climatic conditions

### 2/Device installation

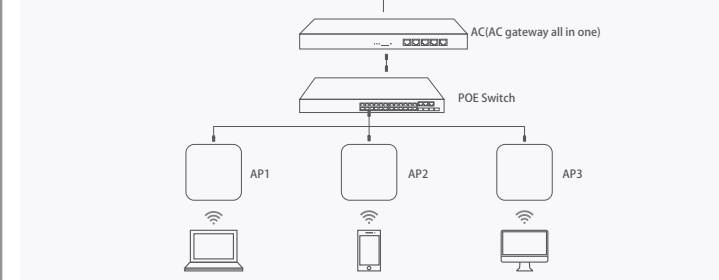


### 3/Device connection

#### Bypass mode topology

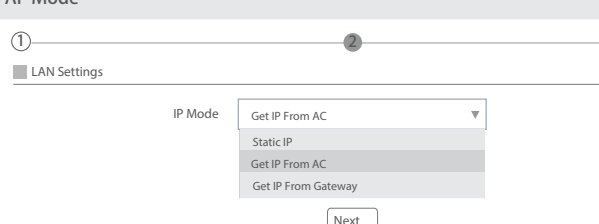


#### AC Gateway mode topology

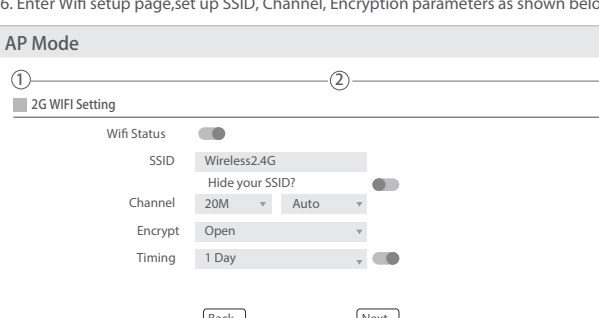


Tip: If the AP supports 24V POE, please use 24V POE switch or POE adapter; if the AP is a standard 48V POE device, please use a standard IEEE802.3at POE switch or POE adapter. When deploy a large wireless network, there are many APs in this network, it is recommended to use a wireless AC controller in the network to centralized manage all APs in the network.

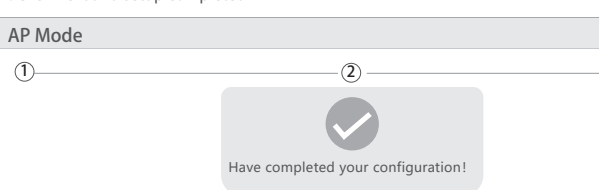
### 4/Internet connection and status view



#### 6. Enter Wifi setup page, set up SSID, Channel, Encryption parameters as shown below:



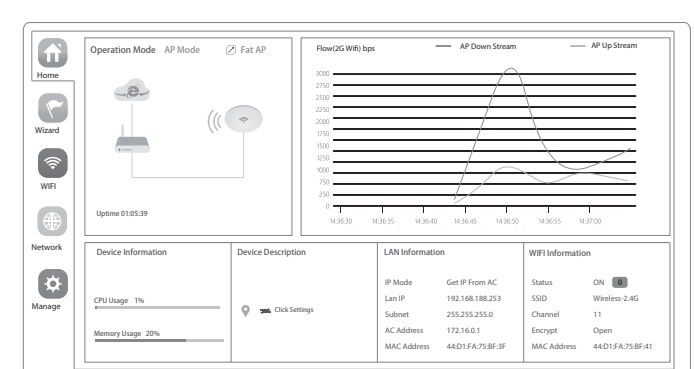
#### 7. Click Next and setup completed



### 4/Internet connection and status view

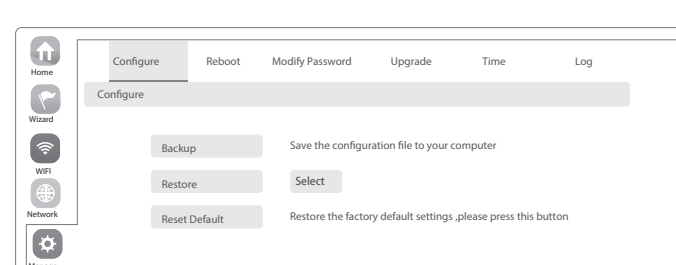
**IP settings:** After the configuration is completed, the wireless AP will restart and enter the Operation Mode you set. Then change the IP address of your computer to Obtain an IP address automatically, computer and other wireless devices can connect to the AP for internet access.

**View status:** Manually set a fixed IP address for your computer to 192.168.188.X (X is number range of 2-252), then login the wireless AP by its IP address, to enter the management user interface and view its status, as shown in the following picture.



#### 4/Device Management

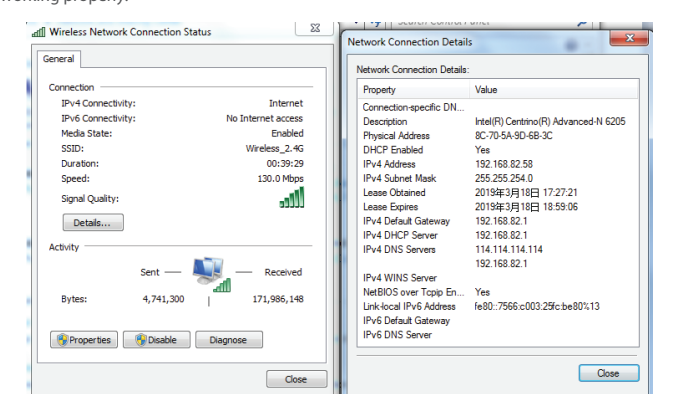
Users can backup, reboot and reset to factory default settings through device management menu options. Also you can modify the WEB login password, upgrade firmware, time synchronization and system log statistics and other functional settings as shown in picture below.



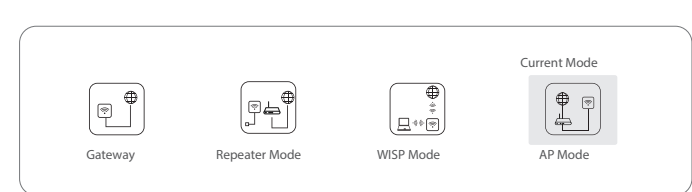
#### 4/Wireless testing

1. Use Laptop or mobile phone to test whether the wireless network can surf the Internet, click wireless network, select the wireless SSID, enter the password to connect the wireless AP, test whether you can surf the Internet.

2. Check the status of the wireless network connection: signal quality, speed, Bytes sent and received. Click on Details, check if the IP address and DNS server address etc. obtained correctly, confirm that the device is working properly.



### 4/Other mode



#### Gateway Mode

Realize router function, WAN port connect with modem (ADSL or Fiber), or WAN port connect internet by dynamic or static IP type.

#### Repeater mode

Realize wireless bridge and forwarding without compatibility matching with the upper device.

#### WSP Mode

Wireless ISP clients connect to the wireless base station by wireless, to realize local LAN internet connection sharing.

#### AP mode

Under AP mode, NAT, DHCP, firewall, and all WAN related functions are turned off, all wireless and wired interfaces are bridged together, no distinguishing between LAN and WAN.

#### Operation mode setup

Based on the Quick-Setup Wizard for each mode in the above picture, click the Next step until the settings for each operation mode are completed.

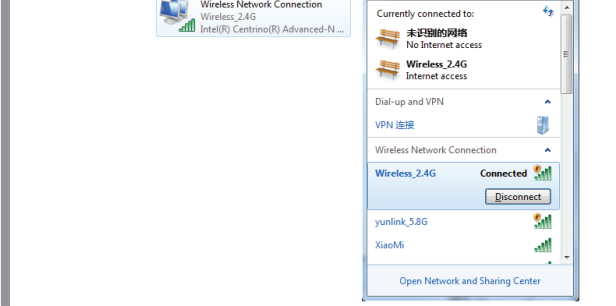
尺寸：420X297mm  
双面印刷 有折位  
80g双胶书纸

### 4/Device management

#### 4/Management from WEB UI

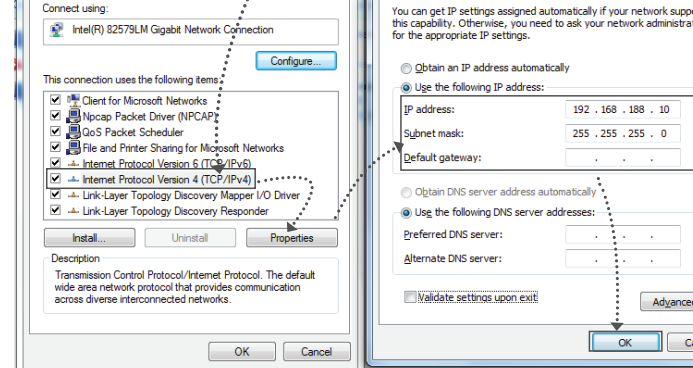
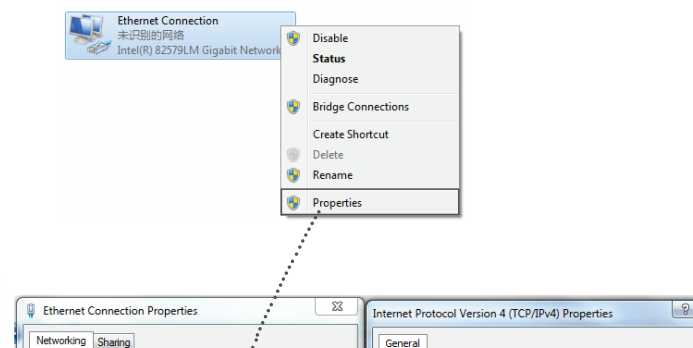
##### Connect PC by wireless

(1). To connect an AP wirelessly, you need set the IP address of the TCP/IP properties of the wireless network card to 192.168.188.X (X is number range of 2-252) first, so that the AP and PC in the same IP segment, and set the subnet mask to 255.255.255.0, as shown in the following picture:



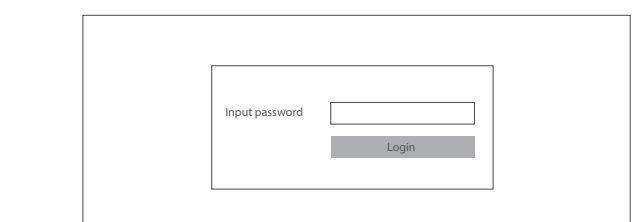
##### Connect PC by wired port

Using the wired connection, set the IP address of the TCP/IP properties of the wired network card to 192.168.188.X (X is number range of 2-252), and the PC will be the same IP segment as AP.

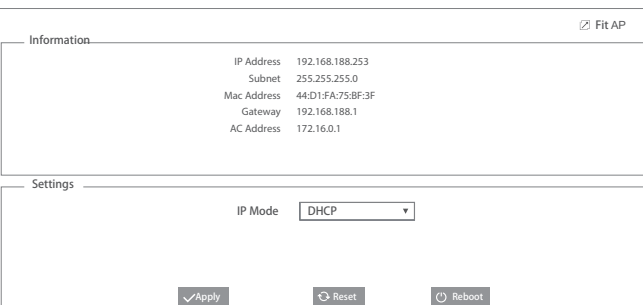


#### 4/AP mode

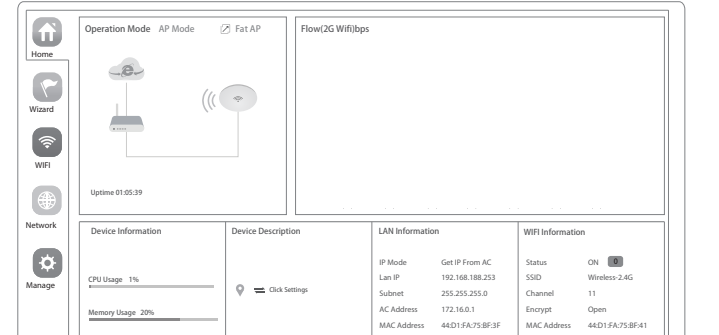
1. Use Internet Explorer to visit http://192.168.188.253, pop up the login dialogue box shown in the following picture, input the default login password: admin, then press "Login" to enter the wireless AP's management user interface page.



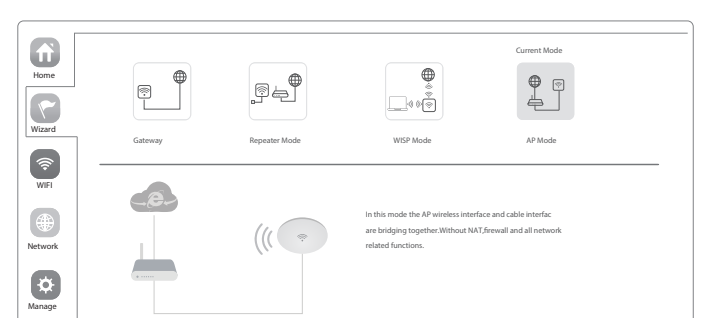
2. By default it is in FAT AP mode, users need click the button at the right corner to change it to FAT AP mode if needed.



#### 3. In FAT AP mode user interface home page is as shown below:



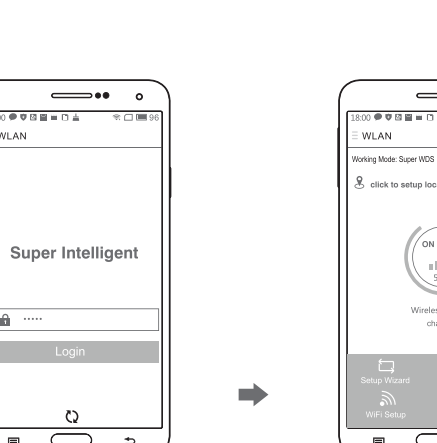
#### 4. Setup Wizard page, choose AP mode as the current working mode.



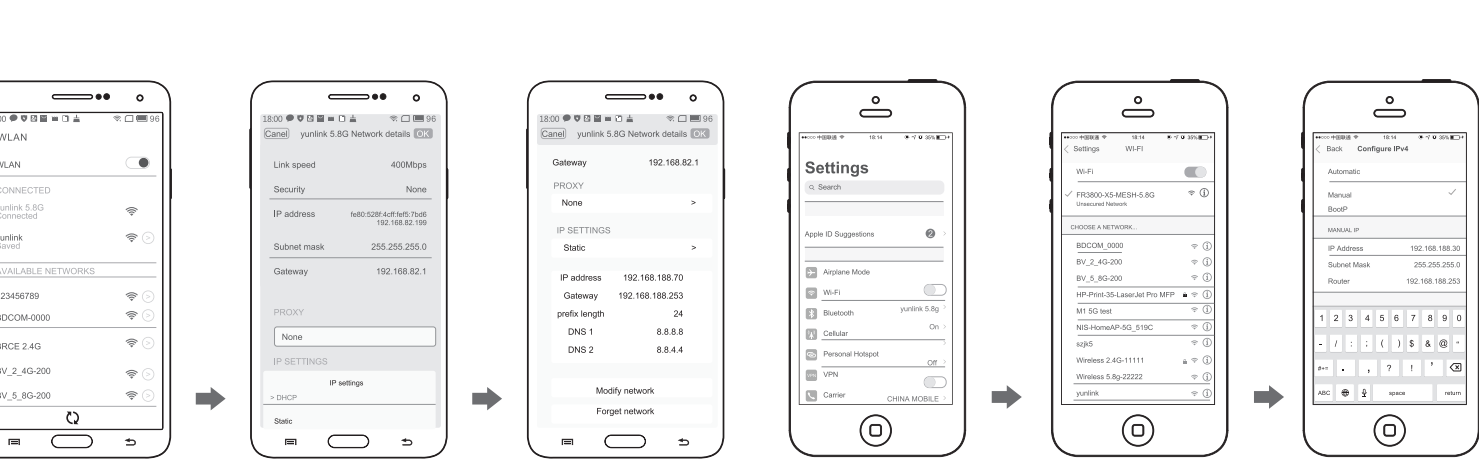
### 5/Use mobile phone to login

#### 1. Use mobile phone to login

##### Mobile phone login web page of AP (default password is admin)



##### When mobile phone connect to AP through wireless, need to configure static IP according to below steps



### FAQ and Solutions

**Q1: Forget login name and password?**  
A1: Reset to factory default settings: press the reset button for about 10 seconds and release it, the device will reboot and reset to factory default settings automatically.

**Q2: Can not Login wireless AP management WEB interface?**  
A2: 1. Check if PC with static IP and if two IP is in the same IP segment of AP, make sure it is not set to other IP range.  
2. Reset AP to factory default settings and re-connect to AP.  
3. Make sure wireless AP IP address is 192.168.188.253 and not occupied by other devices.  
4. Check if there is something wrong with PC and Ethernet cable, recommended to use CAT 5e or above UTP cable.

**Q3: Forget wireless network password?**  
A3: 1. Connect AP by wired, login WEB management interface, click wireless settings--> basic settings-->Encryption-->Password, and set a new password for wireless network.  
2. Reset AP to factory default settings, the default password is 66666666.

**Q4: Can not obtain IP Address?**  
A4: 1. In gateway or WSP mode, check if DHCP server is enabled.  
2. In repeater or AP mode, check if upper network connection is normal, or if LAN network DHCP server is working well.

**Q5: How to change FAT AP to FAT AP?**  
A5: Switch FAT and FIT mode by clicking the button at right corner, then device will reboot. After rebooting, please clear history buffer files in IE and then login.

**NOTE: Once the device is switched to FAT AP mode, AC controller will not be able to manage and control it.**

**Q6: AC controller device list can not get AP devices?**  
A6: The mode for AC controller and AP are different, AC controller with model prefixed AC is used to control FAT AP, the model prefixed in FAT or BW is used to control FIT AP.  
**NOTE: All the APs support both FAT and FIT AP mode, the default mode is FIT AP mode.**

\*This manual is only used for instructions and provides an accurate information as we can, but we can not make sure all the information in this manual is correct. This manual may be updated because of the products upgrade, we have the right to revise the manual without any notice.

正面

背面

## Warning:

This device complies with Part 15 of the FCC Rules. Operation is subject to the following two conditions: (1) this device may not cause harmful interference, and (2) this device must accept any interference received, including interference that may cause undesired operation.

changes or modifications not expressly approved by the party responsible for compliance could void the user's authority to operate the equipment.

NOTE: This equipment has been tested and found to comply with the limits for a Class B digital device, pursuant to Part 15 of the FCC Rules. These limits are designed to provide reasonable protection against harmful interference in a residential installation. This equipment generates, uses and can radiate radio frequency energy and, if not installed and used in accordance with the instructions, may cause harmful interference to radio communications. However, there is no guarantee that interference will not occur in a particular installation. If this equipment does cause harmful interference to radio or television reception, which can be determined by turning the equipment off and on, the user is encouraged to try to correct the interference by one or more of the following measures:

- Reorient or relocate the receiving antenna.
- Increase the separation between the equipment and receiver.
- Connect the equipment into an outlet on a circuit different from that to which the receiver is connected.
- Consult the dealer or an experienced radio/TV technician for help.

NOTE: This device and its antenna(s) must not be co-located or operation in conjunction with any other antenna or transmitter

## RF Exposure Statement

To maintain compliance with FCC's RF Exposure guidelines, This equipment should be installed and operated with minimum distance of 20cm the radiator your body. This device and its antenna(s) must not be co-located or operation in conjunction with any other antenna or transmitter