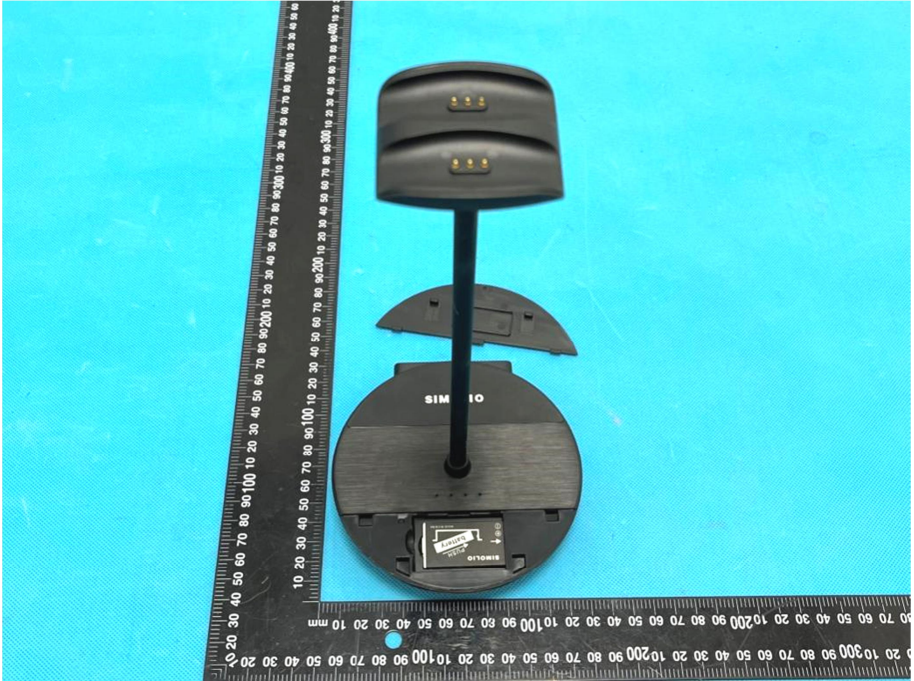
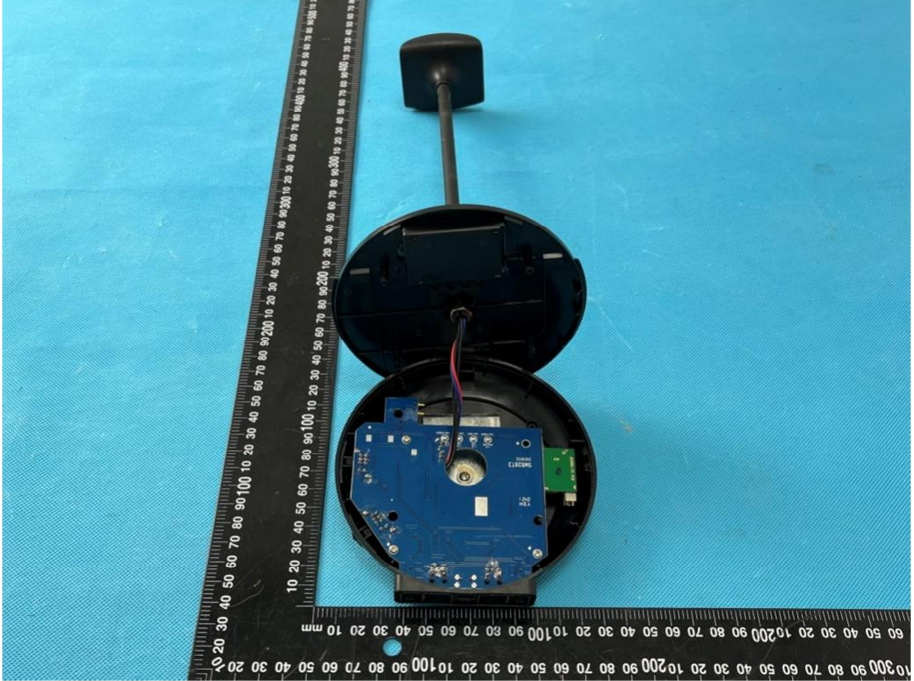
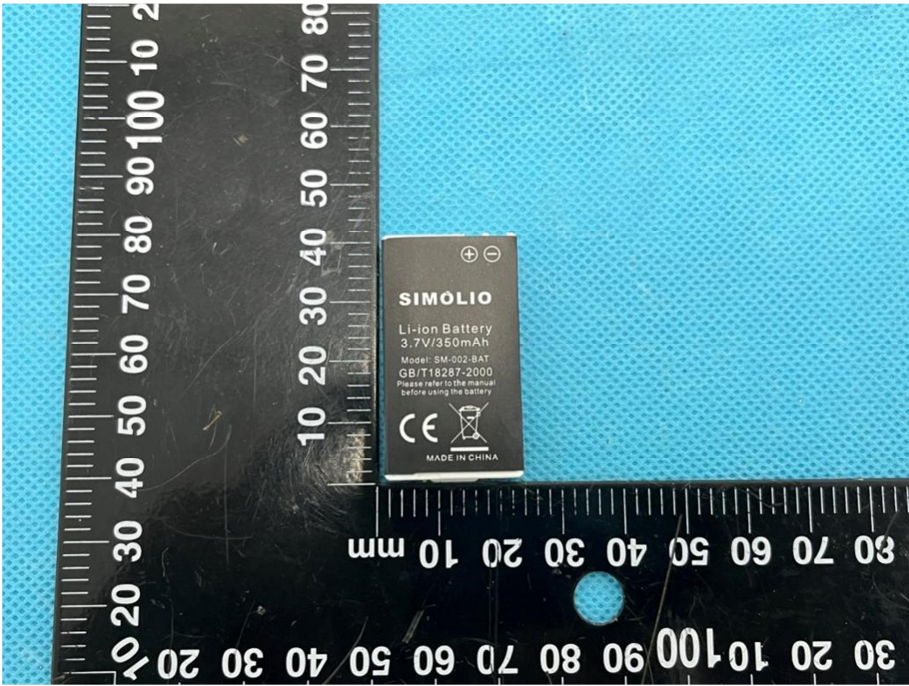
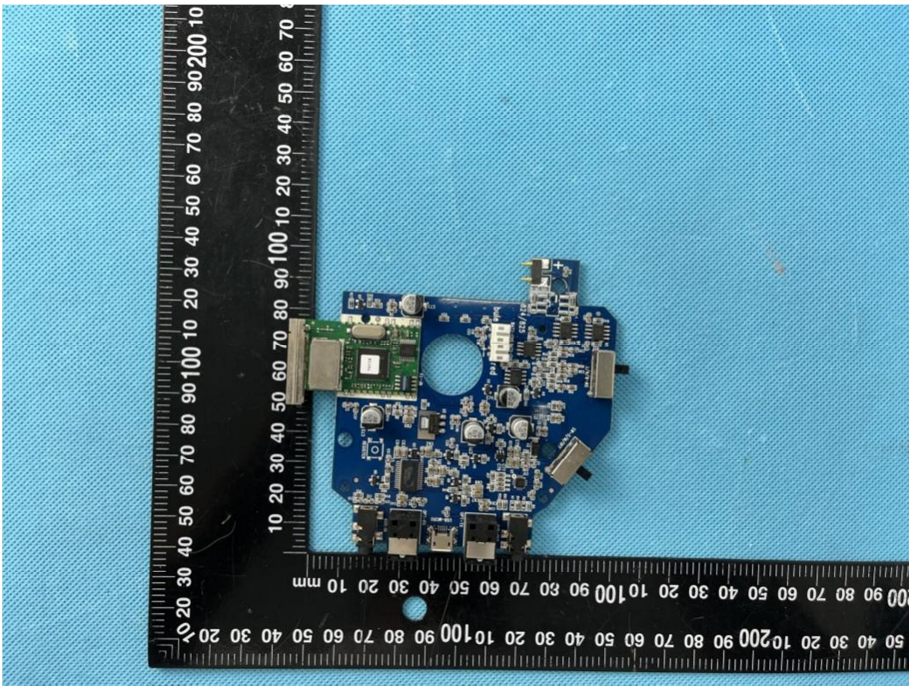
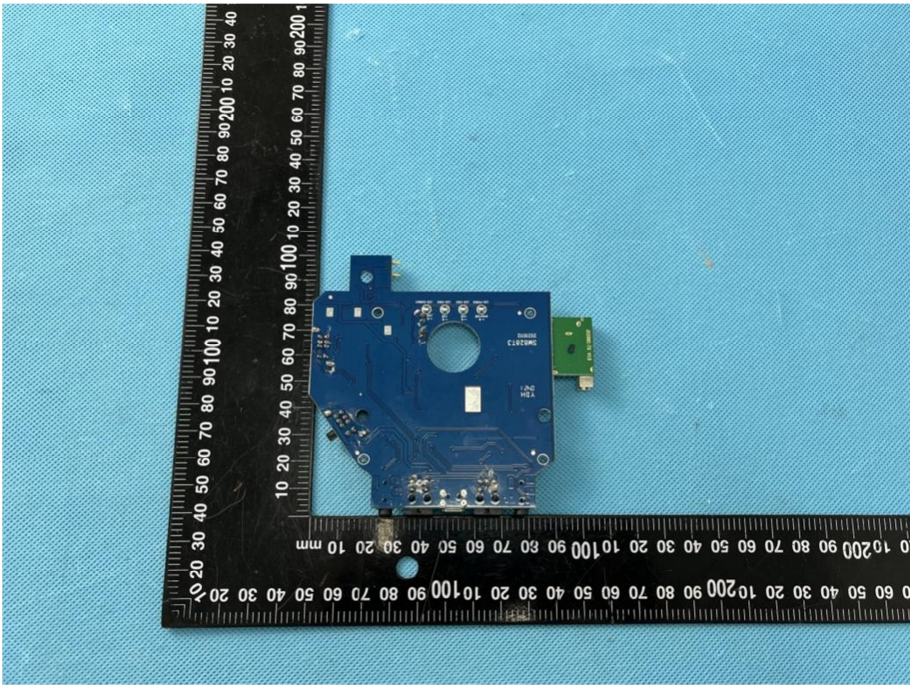
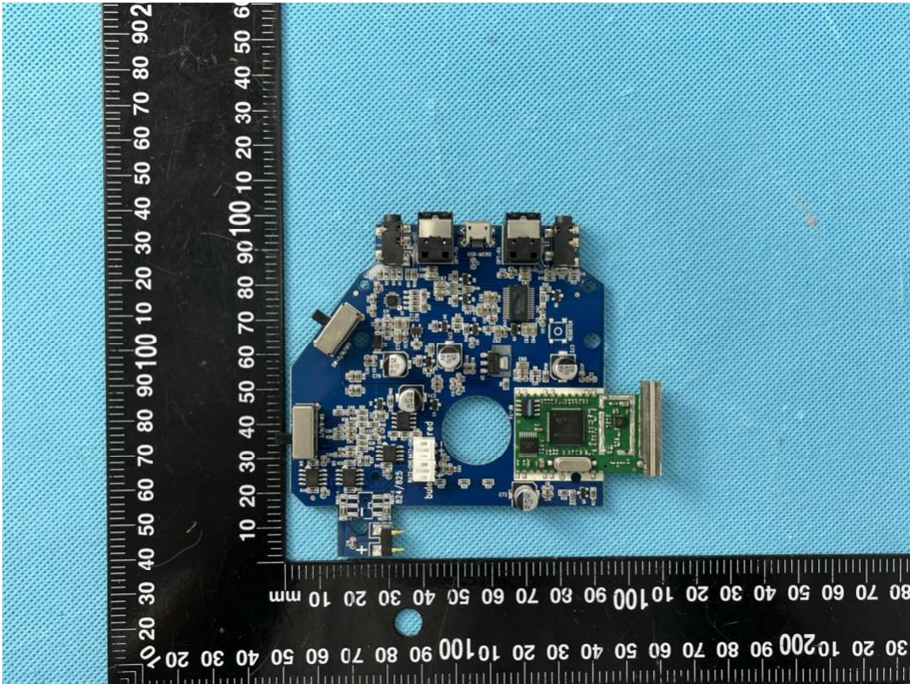


### EXHIBIT 3 - EUT INTERNAL PHOTOGRAPHS

<p><b>EUT Housing and Board View 1</b></p>	 <p>This photograph shows the external components of the EUT. At the top is a black, dome-shaped antenna with two gold-colored contacts. Below it is a black plastic cover with a SIM card slot labeled 'SIM 10'. A black printed circuit board (PCB) is mounted on a central black post. A black ruler is placed vertically to the left of the components for scale, showing measurements in millimeters.</p>
<p><b>EUT Housing and Board View 2</b></p>	 <p>This photograph shows the internal components of the EUT. The black plastic housing is open, revealing a blue PCB with various electronic components, including a circular component and a green component. A black antenna is attached to the top of the PCB. A black ruler is placed vertically to the left of the components for scale, showing measurements in millimeters.</p>

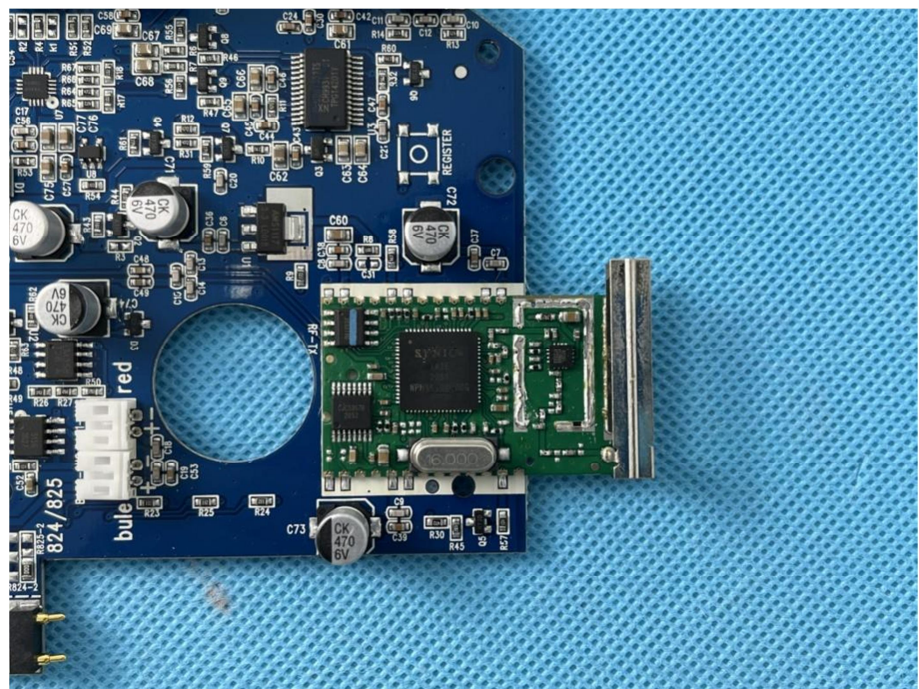
<p style="text-align: center;"><b>Solder Board-Component View 1</b></p>	
<p style="text-align: center;"><b>Solder Board-Component View 2</b></p>	



<p style="text-align: center;"><b>Solder Board-Component View 3</b></p>	 <p>A photograph of a blue printed circuit board (PCB) component, labeled 'View 3'. The board is irregularly shaped with a central circular cutout. It features several surface-mounted components, including a green integrated circuit (IC) on the right side and various smaller components. A black L-shaped ruler is placed next to the board for scale, showing measurements in millimeters. The board is set against a light blue textured background.</p>
<p style="text-align: center;"><b>Solder Board-Component View 4</b></p>	 <p>A photograph of the same blue PCB component, labeled 'View 4'. This view shows the board from a different angle, revealing more of its surface components, including a large green IC, several capacitors, and other electronic parts. A black L-shaped ruler is used for scale, and the board is placed on a light blue textured background.</p>



**Solder  
Board-Component View  
5**



**Antenna View**

