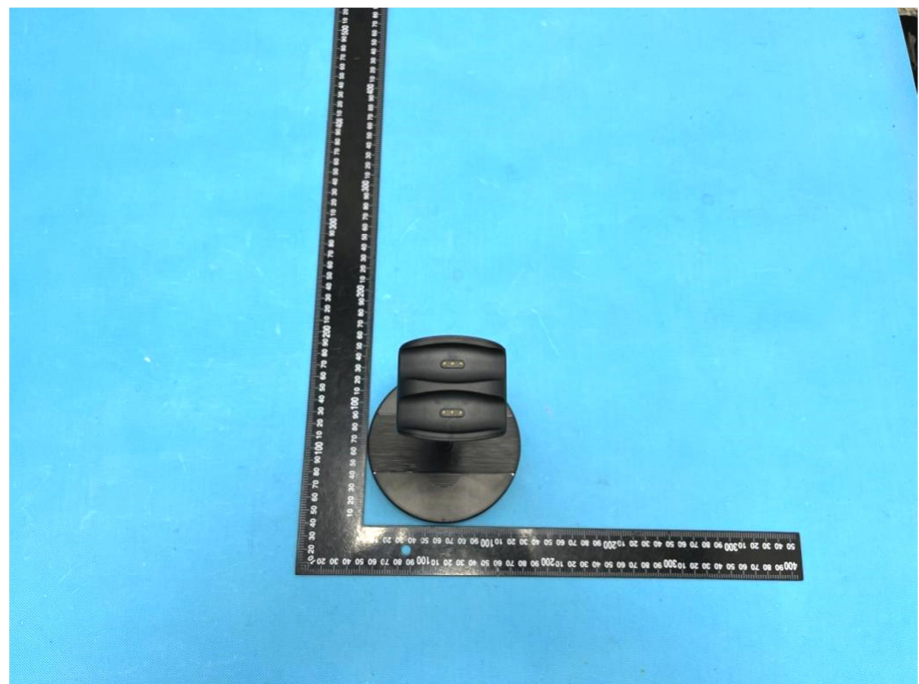


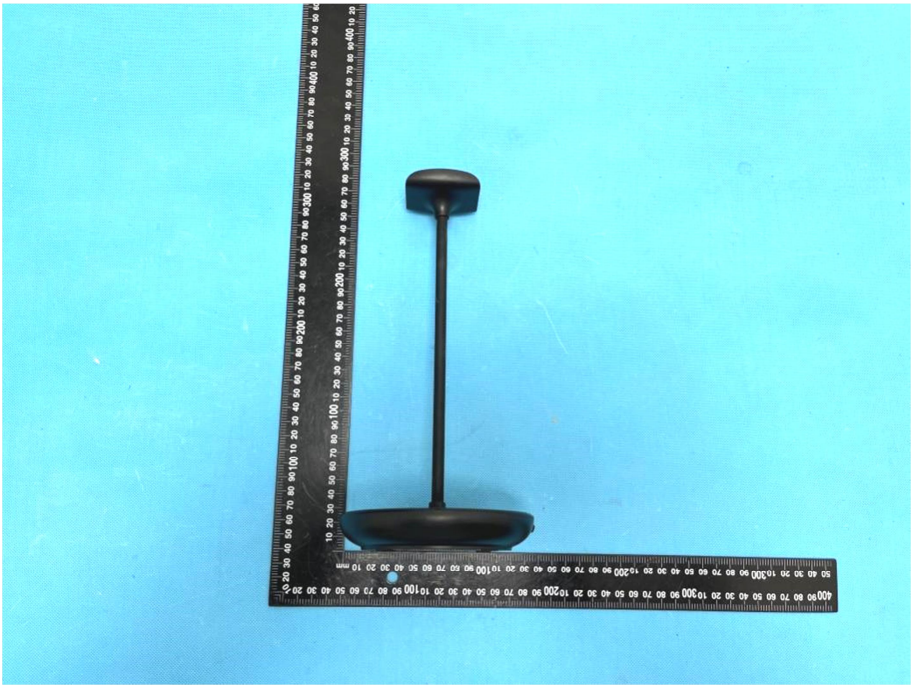
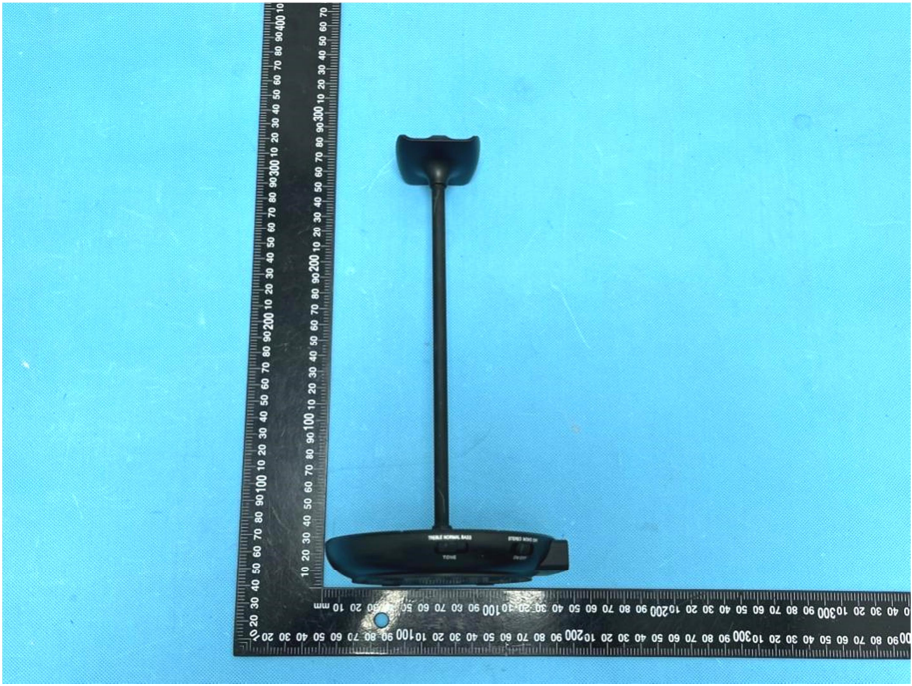
EXHIBIT 2 - EUT EXTERNAL PHOTOGRAPHS


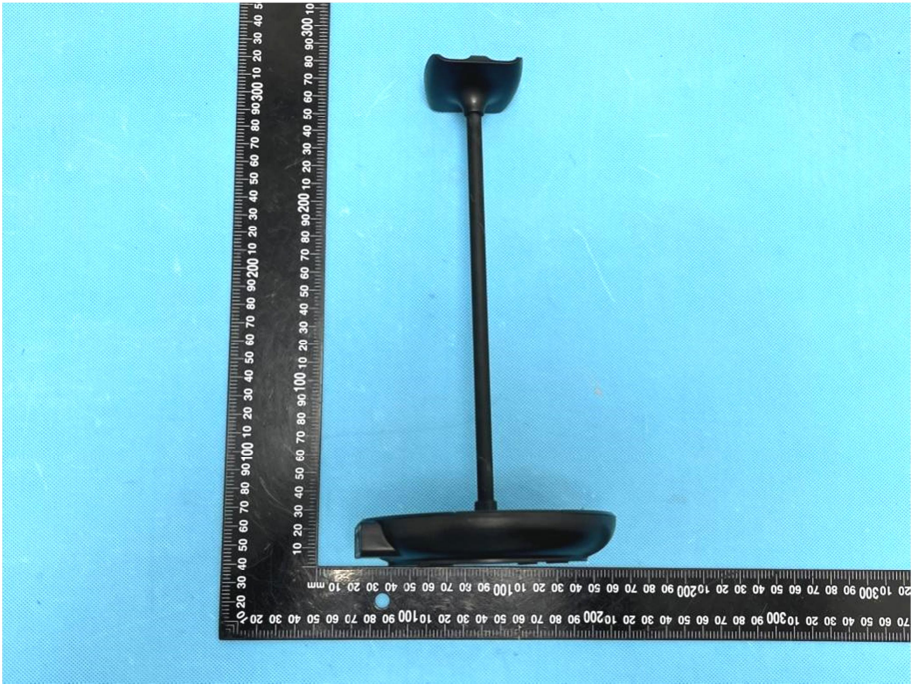
EUT View 1



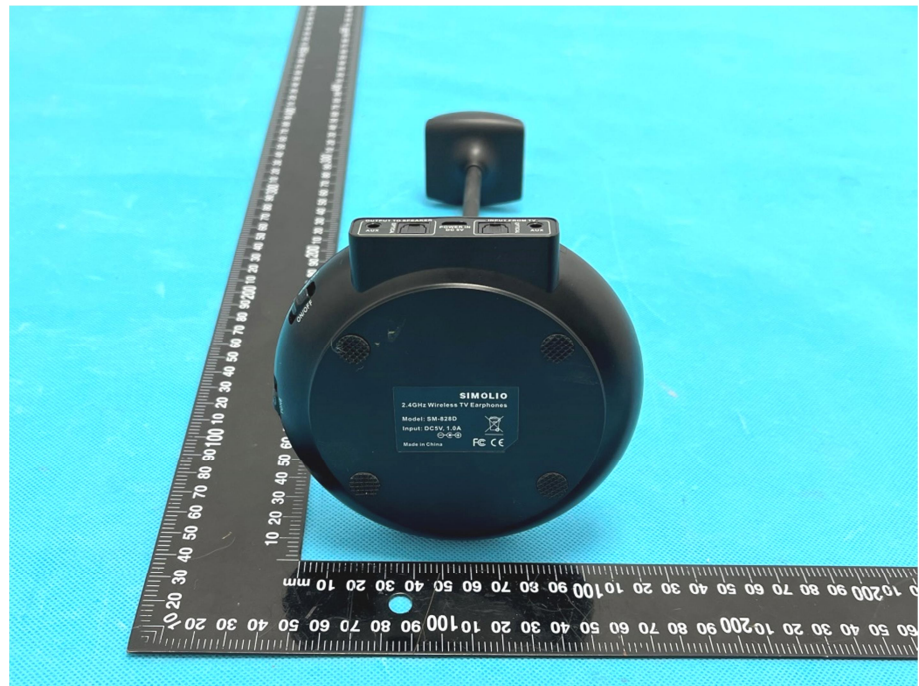
EUT View 2



<p>EUT View 3</p>	 A photograph of a black electronic unit (EUT) against a light blue background. The unit has a circular top section and a thin vertical stem. A ruler is placed vertically to the left of the unit for scale, showing the unit is approximately 100 mm tall. The ruler has markings in millimeters and centimeters.
<p>EUT View 4</p>	 A photograph of the same black electronic unit (EUT) from a different perspective, showing the bottom section. The unit has a circular top section and a thin vertical stem. A ruler is placed vertically to the left of the unit for scale, showing the unit is approximately 100 mm tall. The ruler has markings in millimeters and centimeters.

<p>EUT View 5</p>	
<p>EUT View 6</p>	

EUT View 7



EUT View 8

