

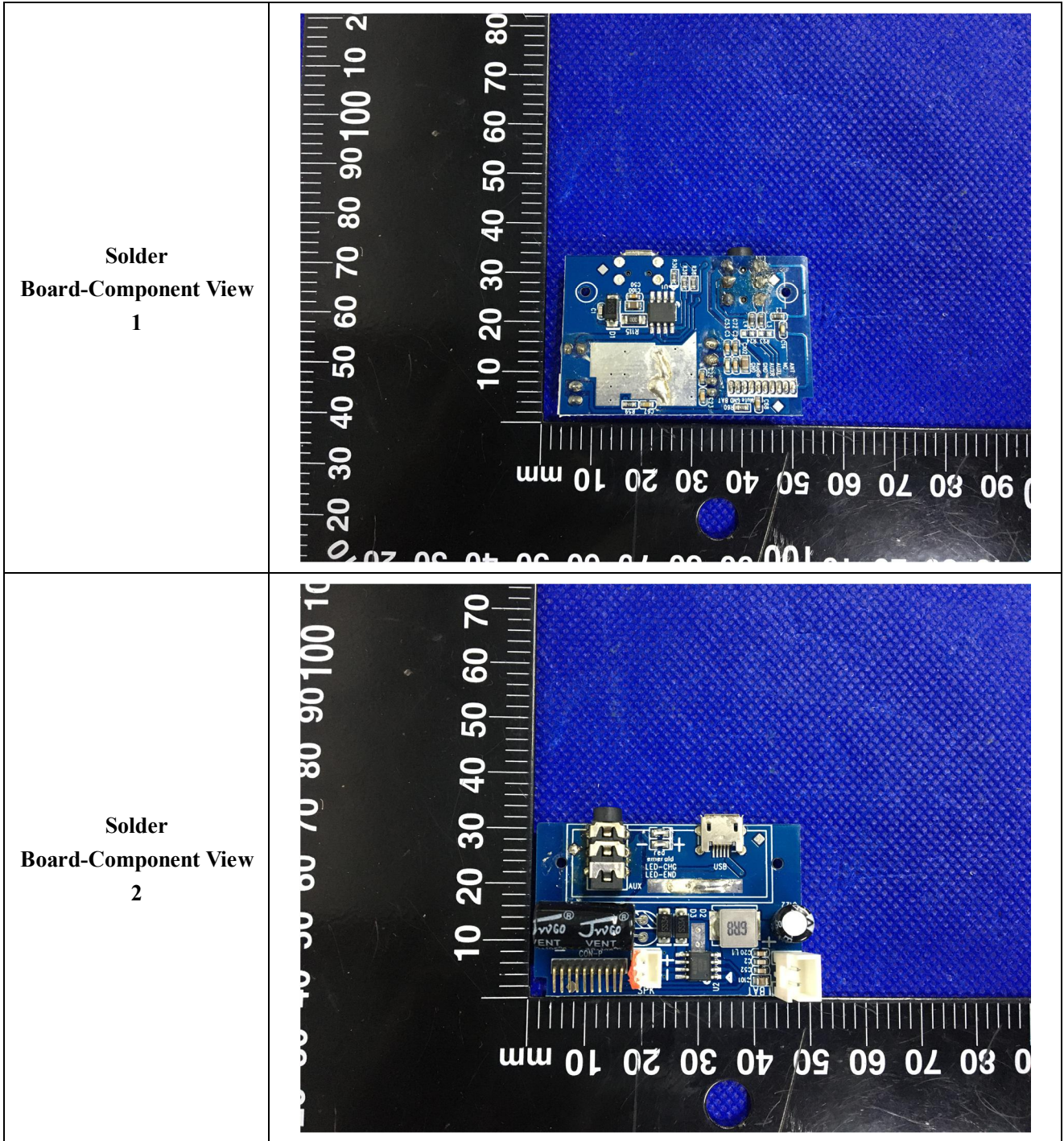
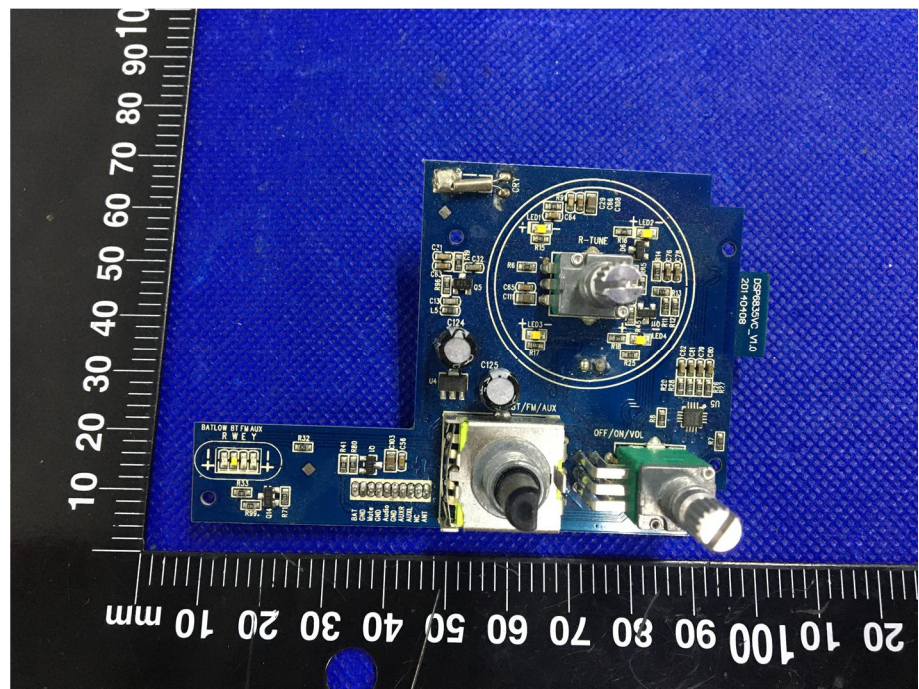


EXHIBIT 3 - EUT INTERNAL PHOTOGRAPHS

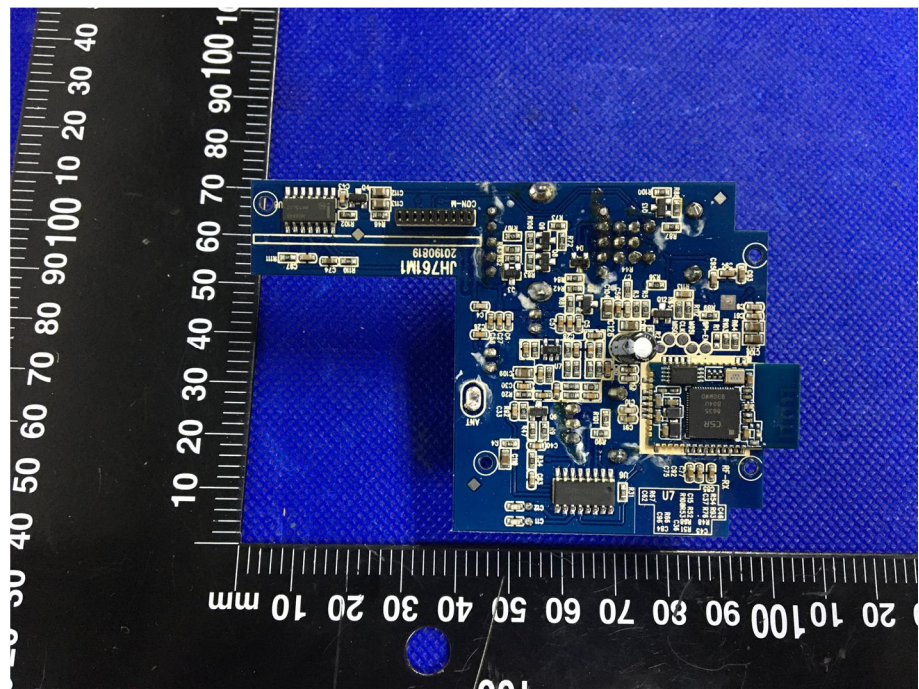
<p>EUT Housing and Board View 1</p>	 <p>This photograph shows the internal components of the EUT housing. The top half of the image displays the brown plastic housing with its lid removed, revealing a blue printed circuit board (PCB) and a white cylindrical component. The bottom half shows the black plastic lid with a blue battery pack attached. A black ruler with white markings is positioned vertically on the left side of the components for scale.</p>
<p>EUT Housing and Board View 2</p>	 <p>This photograph provides a different perspective of the EUT housing and board. The brown plastic housing is shown with its lid removed, highlighting a white cylindrical component and a yellowish circular component. The blue PCB is shown separately below the housing. A black ruler with white markings is positioned vertically on the left side of the components for scale.</p>

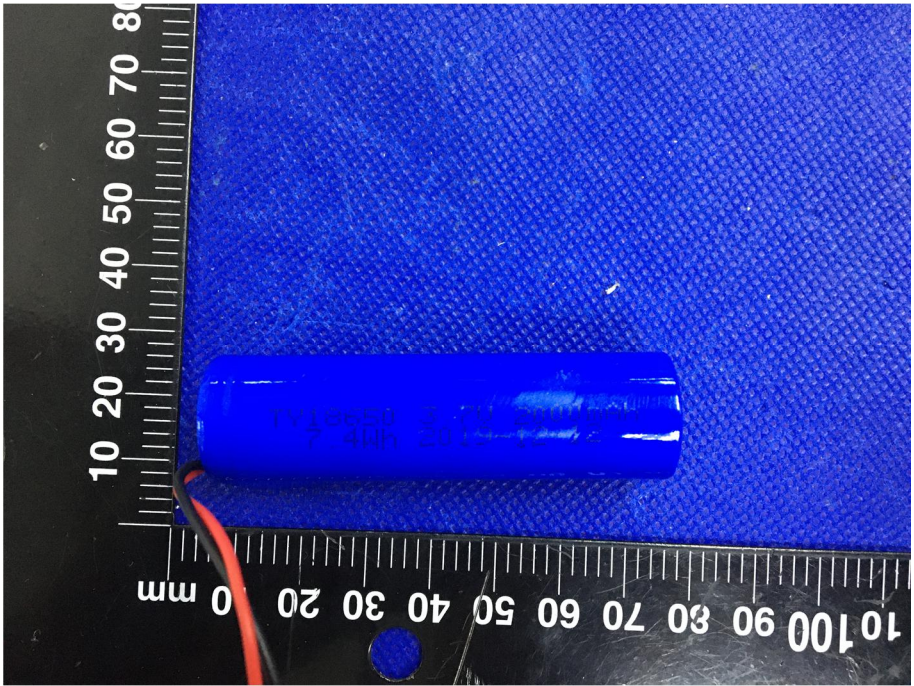


**Solder
Board-Component View
3**



**Solder
Board-Component View
4**



<p style="text-align: center;">Solder Board-Component View 5</p>	
<p style="text-align: center;">Antenna View</p>	