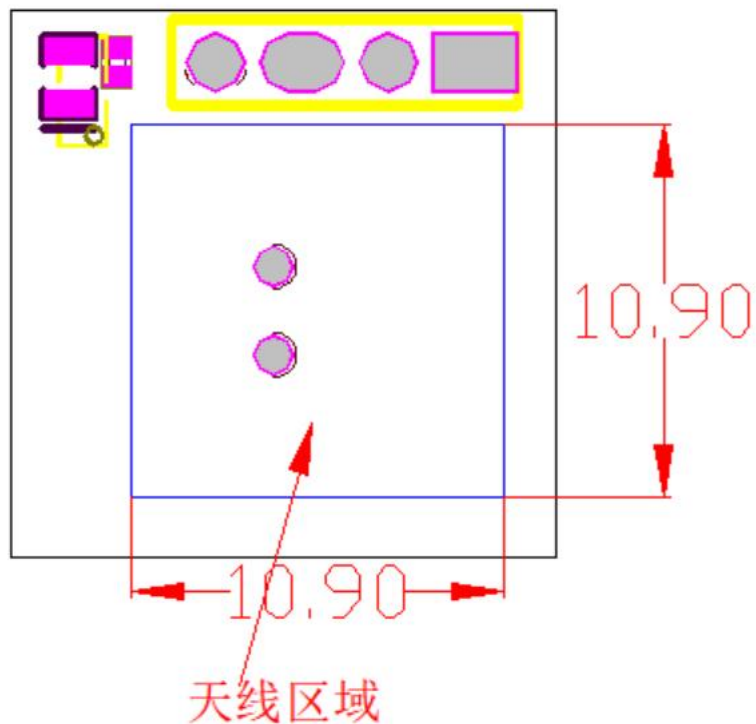


Antenna Specifications

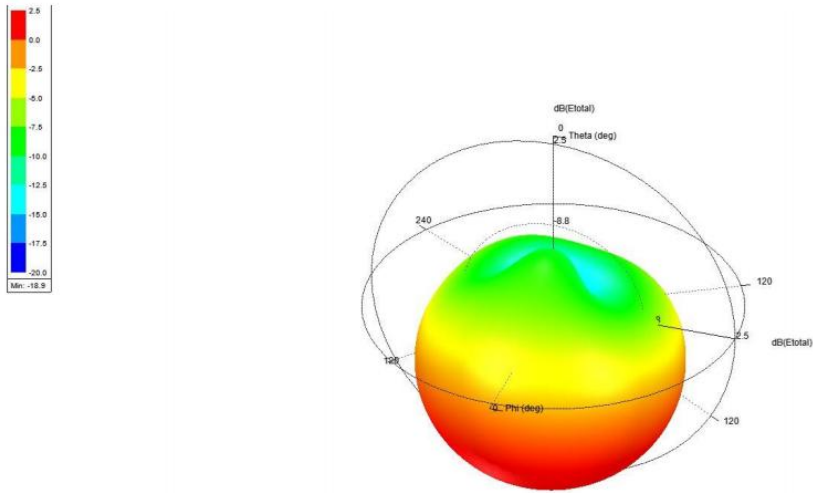
Design Specifications	Typical
Antenna Type*	Patch
Working Frequency	5.8GHz
Antenna Gain	2 dBi
Impedance	50 ohm
Overall Dimensions*	10.9mm * 10.9mm
Manufacturer's company name	深圳市科世佳电子有限公司 Shenzhen keshijia electronics co.,ltd
Manufacturer Address	深圳市宝安区沙井街道中熙工业园D栋一楼 First floor, Building D, Zhongxi Industrial Park, Shajing Street, Bao'an District, Shenzhen

- Schematic

背视图

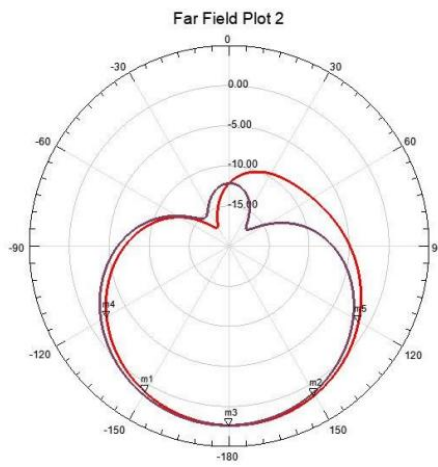


● 3D Antenna Gain



● 2D Antenna Gain

Name	Theta	Ang	Mag
m1	-150.0000	-150.0000	1.0234
m2	150.0000	150.0000	1.4672
m3	-180.0000	-180.0000	2.3666
m4	-120.0000	-120.0000	-2.2911
m5	120.0000	120.0000	-1.2805



Curve Info
— dB(Etotal)
HFSS Setup 1: Last Adaptive
F=5.8GHz' Phi=0deg'
— dB(Etotal)
HFSS Setup 1: Last Adaptive
F=5.8GHz' Phi=90deg'