

版本	更改	审核	日期
A0	首版发布	杨振华	21.06.21
A1			
A2			

Certificate

Inspector: _____

QC: _____

User Manual

Safety Instructions

Please observe the following instructions to ensure safety use:

01. DO NOT attempt to replace the internal battery with anything other than authorized replacement battery by yourself.
02. DO NOT operate in wet conditions, let unit dry completely before using.
03. Ensure proper ventilation while in use and do not obstruct fan openings on use. Inadequate ventilation may cause damage to the power station.
04. DO NOT stack anything on top of the power station in storage or in use, vibration and impact may lead to poor connection to hardware inside.
05. DO NOT insert foreign objects into outputs or ventilation holes.
06. DO NOT place the power station near heat sources like furnace or ambient heater.
07. The power station generates the same potentially lethal AC power as household wall outlet, please take carefully and keep children away from it.

User Manual

General Specs

AC Rated Power 1600W (Surge)	Typical Capacity 716Wh	Battery Type LiFePO4	Net Weight 6.7kg <small>(Net weight may differ by 0.1kg/0.2kg due to production)</small>	Dimensions 315x212x233mm (12.4x8.4x9.2in)	Storage Ambient Temperature -5-45°C 32-115°F	Working Environment Humidity 10-90%	Discharge Temperature -20-45°C -4-114°F	Charge Temperature 5-40°C 32-104°F
---------------------------------	---------------------------	-------------------------	--	---	--	--	---	--

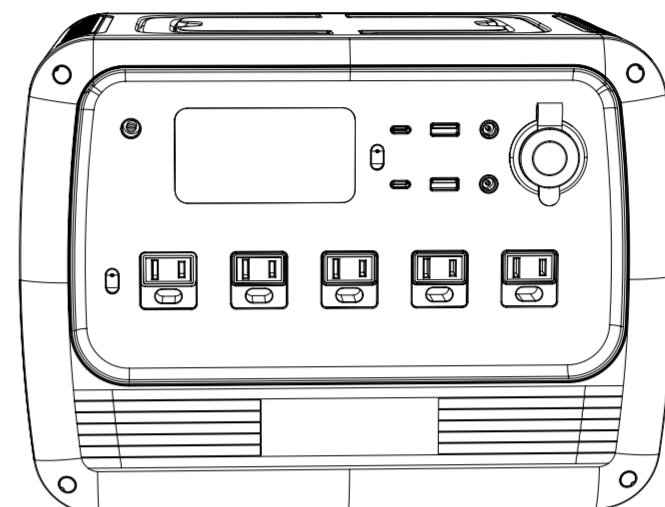
Output Specs

AC 100-120VAC/50-60Hz 220-240VAC/50-60Hz	USB 5VDC/3A	USB-C 5VDC/3A Max 100W Power Delivery (PD) 20VDC/5A (power 100W max)	Cigarette Lighter 12VDC/5A 120W	5521 5521	Wireless Charging 5W/7.5W 15W/15W	Car Charging Max 4.4A/14.5V/60W About 7.8 Hrs/80W	AC-DC Adapter 12.28V/300W About 4.1-4.8 Hours	Solar Charging 12.28V/300W About 4.1-4.8 Hours	Generator Charging
--	----------------	---	---------------------------------------	--------------	---	---	---	--	--------------------

Common Loads

Smart Phone Around 50-60 Times 10Wh	LED Light Bulb Around 35-38 Hrs 20W	Television Around 7.8 Hrs 75W	Electronic Tools Around 7.8 Hrs 85W	Refrigerator Around 6.7 Hrs 90W	Slow Cooker Around 2-3 Hrs 200W
---	---	-------------------------------------	---	---------------------------------------	---------------------------------------

716Wh÷(DOD×η) (the current load power W) = available time (unit: hrs/min)
Note: DOD indicates Depth of Discharge, η indicates inverter efficiency, DOD=90%, η=90%.



716Wh Portable Power Station

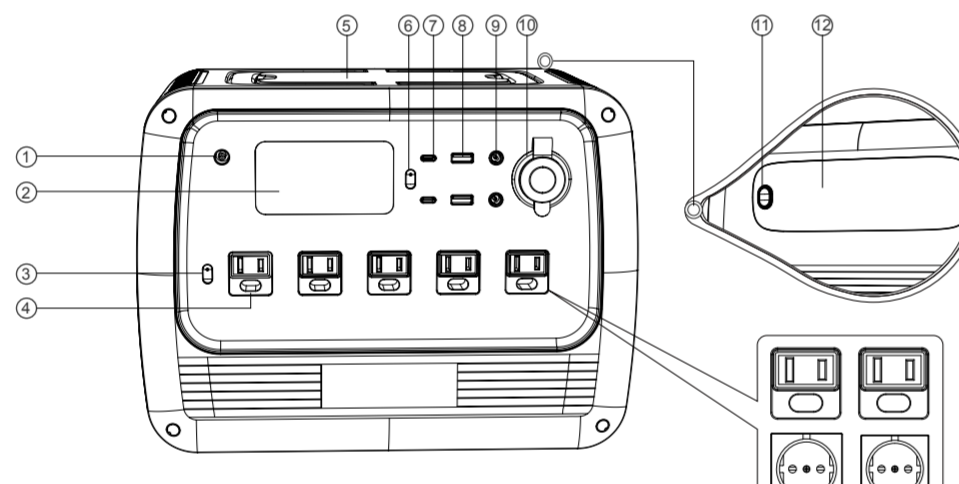
User Manual

Please read this manual before use and follow its guidance. Keep this manual for future reference.

P/N:17.0303.0384-00A0

物料编码

User Manual

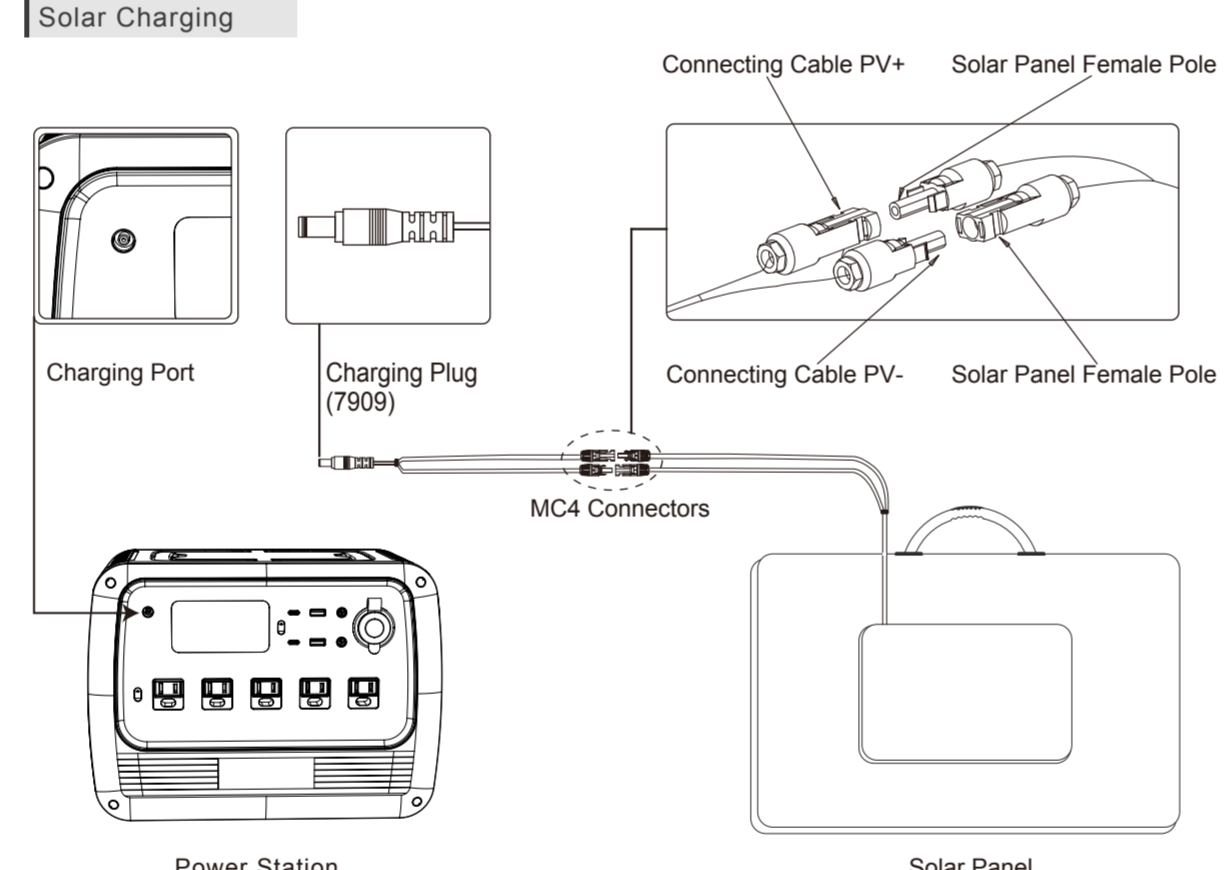


QUICK GUIDE

01. Charging Port	07. USB-C Port x 2pcs
02. LCD Screen	08. USB-A Port x 2pcs
03. AC Power Button	09. DC 5521 Output Port x 2pcs
04. US AC output x 5 pcs (EU/UK AC output x 3pcs)	10. Cigarette Lighter Port x 1pcs
05. Wireless Charging Pad x 1pcs	11. LED Lamp Button
06. DC Power Button	12. LED Lamp

User Manual

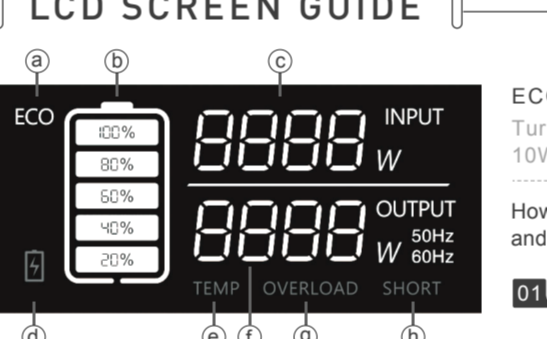
Solar Charging



Power Station Solar Panel

User Manual

LCD SCREEN GUIDE




ECO Mode: Turn off the unit while the power of AC output is less than 10W in 4 hours for power saving.

How to operate on power station to turn ON/OFF ECO Mode and change the working frequency:

01. To Enter Settings Mode: Turn "AC" mode to the off position. Press "AC" and "DC" buttons at same time for 2 seconds to enter "Settings" mode.
02. To Change Frequency Setting: Once in "Settings" mode, press the "AC" button to switch frequency of the AC output ports to either 50 or 60 Hz depending on your location.
03. Eco Mode: Once in "Settings" mode, press the "DC" button to turn ON / OFF the ECO mode.
04. Exit Settings Mode: Long press the "AC" and "DC" buttons at the same time for 2 seconds to save and exit the settings mode.

What's In The Box



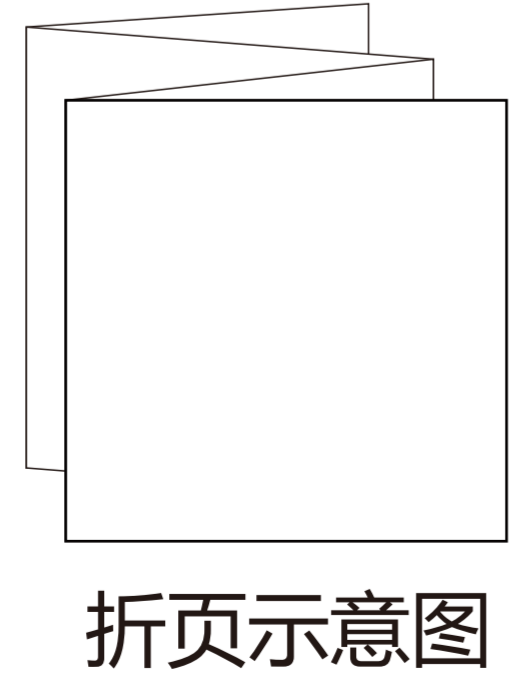
User Manual

FREQUENTLY ASKED QUESTIONS

1. How do I clean for power station?
A. Dry, non-abrasive cloths to wipe will be perfect. The power station is a versatile tool for various adventures, simple cleaning would be required from time to time to keep the unit in a good condition.
2. How to store my power station?
A. Please place the power station in a dry and cool place at the recommended temperature. Do not expose the power station to humid environment. If you want to store it for a long time, please charge the battery to 80% every 6 months to extend the battery lifetime. Remind to turn off the unit before storing.
3. How do I know whether my device will work with the power station?
A. Step 1: You need to figure out the amount of power your devices require. Some research may be taken on internet search or the user guide of your device shall suffice.
Step 2: Check the rated power of certain port on power station. For example, if the AC output port generates 700W of power and your device requires over 700W for an extended period of time, the power station will turn itself off.
4. How to claim the warranty?
A. Please place your after-sale requirement as the warranty card written to the platform where you order the product.

FCC warning
This device complies with part 15 of the FCC Rules. Operation is subject to the following two conditions: (1) This device may not cause harmful interference, and (2) this device must accept any interference received, including interference that may cause undesired operation.
Any changes or modifications not expressly approved by the party responsible for compliance.
NOTE: This equipment has been tested and found to comply with the limits for a Class B digital device, pursuant to part 15 of the FCC Rules. These limits are designed to provide reasonable protection against harmful interference in a residential installation. This equipment generates, uses and can radiate radio frequency energy and, if not used and used in accordance with the instructions, may cause harmful interference to radio communications. However, there is no guarantee that interference will not occur in a particular installation.
If this equipment does cause harmful interference to radio or television reception, which can be determined by turning the equipment off and on, the user is encouraged to try to correct the interference by one or more of the following measures:
- Reorient or relocate the receiving antenna.
- Increase the separation between the equipment and receiver.
- Connect the equipment into an outlet on a circuit different from that to which the receiver is connected.
- Consult the dealer or an experienced radio/TV technician for help.
FCC ID: A59999-PPS003
This equipment complies with FCC radiation exposure limits set forth for an uncontrolled environment. This equipment should be installed and operated with a minimum distance of 20 cm between the radiator and your body.

----- 压痕线 (不印刷)



成品尺寸165*140mm，公差+1/-0mm；
 材质 157G双铜版纸；
 印刷单黑，双面印刷；
 要求表面洁净，无刮花，凹凸痕迹，印刷清晰，折边整齐；
 所有材质必须符合RoHS要求；

深圳市德兰明海科技有限公司 Shenzhen PowerOak Newener Co.,Ltd				
材料		表面处理	见技术说明	无特殊说明，长度单位: mm 未标注尺寸公差按:
型号	PS72	图纸编号/版本	PPS003-6d01A0	见技术说明
名称	说明书英文(中性)			* 一重要尺寸 0—参照尺寸
设计	审核	批准	物料编号	
杨振华			17.0303.0384-00	
2021.06.02			共 张/第 张	