

版本	更改	审核	日期
A0	首发发布	杨振华	2021.01.15
A1	内容更新, 材质改为157g	杨振华	2021.02.26

165.00 mm

140.00 mm

Warning:
Changes or modifications to this unit not expressly approved by the party responsible for compliance could void the user's authority to operate the equipment.

NOTE:
This device complies with part 15 of the FCC Rules. Operation is subject to the following two conditions: (1) This device may not cause harmful interference, and (2) this device must accept any interference received, including interference that may cause undesired operation.

FCC Statement:
This equipment has been tested and found to comply with the limits for a Class B digital device, pursuant to part 15 of the FCC Rules. These limits are designed to provide reasonable protection against harmful interference in a residential installation. This equipment generates, uses and can radiate radio frequency energy and, if not installed and used in accordance with the instructions, may cause harmful interference to radio communications. However, there is no guarantee that interference will not occur in a particular installation. If this equipment does cause harmful interference to radio or television reception, which can be determined by turning the equipment off and on, the user is encouraged to try to correct the interference by one or more of the following measures:
—Reorient or relocate the receiving antenna.
—Increase the separation between the equipment and receiver.
—Connect the equipment into an outlet on a circuit different from that to which the receiver is connected.
—Consult the dealer or an experienced radio/TV technician for help.

RF exposure compliance statement:
This device has been evaluated to meet the general RF exposure requirement it can be used in portable exposure condition without restriction

User Manual

Safety instructions

Please observe the following instructions to ensure safe usage:

- Do not alter or disassemble this product.
- Do not move during charging or using it, because the vibration and impact during moving will lead to poor contact of output interfaces.
- In case of fire, use dry powder fire extinguishers for this product. Do not use water fire extinguisher, which may cause electric shock.
- Close supervision is required when using this product near children.
- Please confirm the rated specification of your load, and do not use it beyond the specification.
- Do not place the product near heat sources, such as electric furnace and heaters.
- Not permitted on aircrafts because the battery capacity exceeds 100Wh.
- Do not touch the product or the plug-in points if your hands are wet.
- Check the product and accessories prior to every use. Do not use if it is damaged or broken.
- Please unplug the AC adapter from the wall outlet immediately in case of lightning stroke, which may cause heating, fire and other accidents.
- Use original charger and cables.

User Manual

General Specs

Rated Output Power 2000W/1000W (DC/AC) 2000W (DC/AC)	Typical Capacity 20000mAh	Battery Type Li-ion	Net Weight 157g	Dimensions 140x140x65mm	Charging Temperature 0-40°C 32-104°F	Discharge Temperature -20-60°C -4-140°F	Working Humidity 10%-90%	Working Noise 50dB
--	------------------------------	------------------------	--------------------	----------------------------	--	---	-----------------------------	-----------------------

Output Specs

AC 100-240VAC 50/60Hz 1000W	USB-A 5V/2.4A 18W	USB-C 5V/3A 15W	Lighter 5V/10A 50W	Lighter 5V/10A 50W	Lighter 5V/10A 50W	Lighter 5V/10A 50W	Lighter 5V/10A 50W	Lighter 5V/10A 50W	Lighter 5V/10A 50W
--------------------------------------	-------------------------	-----------------------	--------------------------	--------------------------	--------------------------	--------------------------	--------------------------	--------------------------	--------------------------

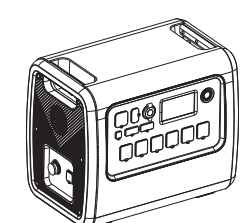
Input Specs

AC-DC Adapter 100-240VAC	Solar Charging 10V-18V/10A	Car Charging 12V/25A	Battery Charging 10-30V/5A
-----------------------------	-------------------------------	-------------------------	-------------------------------

Estimated operating time

Smartphone 175-200 Times 10W	LED Light Bulb Around 75-85hrs 20W	Television Around 20-22hrs 75W	Electronic Tools Around 19-20hrs 80W	Refrigerator Around 17-19hrs 50W	Slow Cooker Around 8-9hrs 200W
------------------------------------	--	--------------------------------------	--	--	--------------------------------------

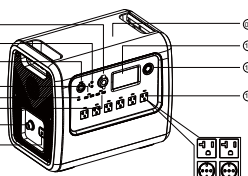
2000Wh=DC/AC (the current load power W) × available (breakout) (hours)
Note: DC/AC is the battery discharged depth, % is the total inverter efficiency 2000Wh=90%×2000Wh



2000Wh ESS (Energy Storage System)
User Manual

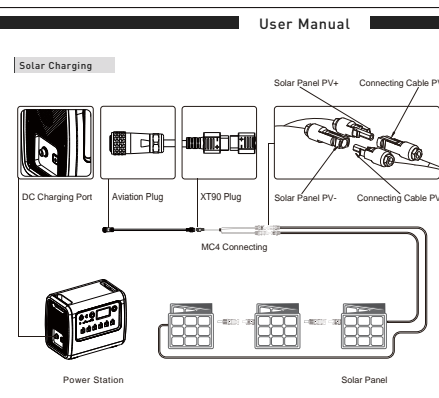
Please read this manual before use and follow its guidance. Keep this manual for future reference.

User Manual




QUICK GUIDE

DC 12V/10A cigarette lighter port	PV/Car input port
DC 12V/10A output x 2pcs	Adapter input port
DC 12V/25A output	Wireless charging 15W x 2pcs
USB-A 18W output x 2pcs	Touchable interaction LCD display
USB-C 100W output	Power button
USB-A 5V/3A output x 2pcs	US AC output x 6 pcs (EU/UK AC output x 4pcs)



User Manual

Safety instructions



a. PV/Car charging display
b. BMS Info
c. Date/Time
d. DC load info
e. DC ON/OFF Switch
f. AC ON/OFF Switch
g. Adapter charging display
h. AC load info

What's In The Box

- Power Station
- AC-DC Adapter
- Solar charging cable (MC4 to XT90)
- Car Charging Cable (Car Plug to XT90)
- 10V/25A Plug in (10A Car/Trailer)
- XT90 to Anderson Plug (Output)
- Leak-test Battery Checker to XT90 input
- XT90 to Aviation Plug (Input)
- User Manual
- Warranty Card
- Female DC/AC to XT90 (10A Car/Trailer Input)

Optional

User Manual

FREQUENTLY ASKED QUESTIONS

- The adapter (power brick) got hot when I charge it, is that alright?
A: It's totally normal for the adapter gets warm, because of the heat produced in circuit during charging.
- Why the unit shutdown automatically with my appliance connecting?
A: The "ECO MODE" (press then hold for 4s to launch) is set to shut down the unit when the AC output of the unit is lower than 50W in 4 hours for power saving.
- What cause the cooling fan not to launch?
A: With the excellent heat dissipation design, cooling fan will only launch when the total loads exceeds 50% of the rated output.
- Can I charge and discharge the power station simultaneously?
A: Yes, it is supported but not recommended in order to protect the lifespan of battery.
- How to claim the warranty?
A: Please refer to the warranty card or the official website for further warranty policy.

Abbreviation Explain:
DC/AC = Direct Current / Alternating Current | PV = PhotoVoltaic (Solar power)
BMS = Battery Management System | CS = Charging State