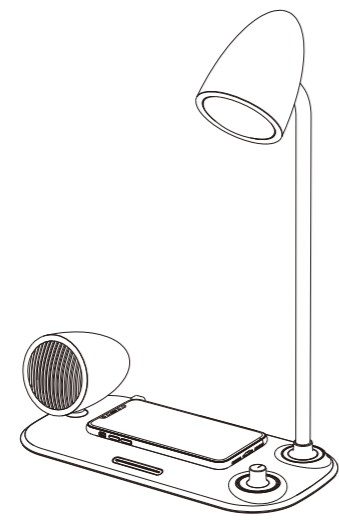




无线充·蓝牙音箱·台灯

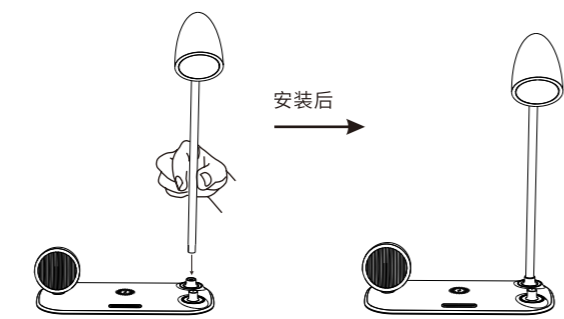
产品使用说明



非常感谢您选择我司产品,在使用产品前请认真阅读产品说明

台灯安装方法

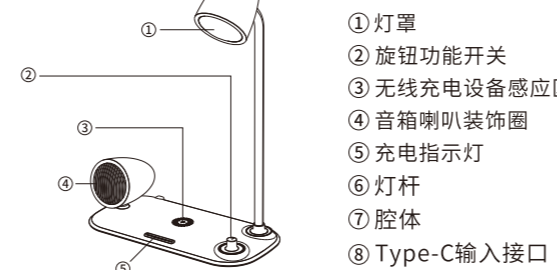
将灯杆对准DC插口,装到主体上。



产品特点

- 造型简易精致、仿古风格。
- 仿古小台灯。
- 蓝牙音箱。
- 旋钮调光及旋钮调音量。
- 15W无线快充。
- 充电距离≤8mm。

外观按键



- ① 灯罩
- ② 旋钮功能开关
- ③ 无线充电设备感应区
- ④ 音箱喇叭装饰圈
- ⑤ 充电指示灯
- ⑥ 灯杆
- ⑦ 腔体
- ⑧ Type-C输入接口

操作方法

- 1.将USB数据线的USB端口接入电源适配器,Type-C端口接入无线充电器。
- 2.产品通电后,充电指示灯会闪烁两下。
- 3.将需要的无线充电设备放在本产品充电指示区域,充电指示灯常亮一分钟,进入充电状态。

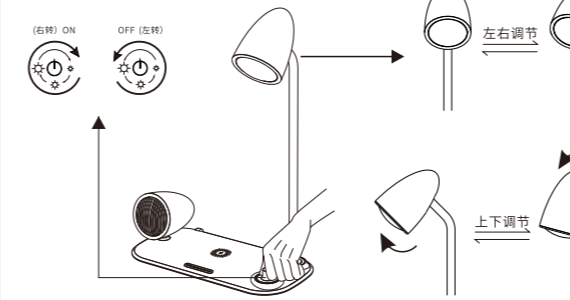


充电指示灯功能

- 当产品通电时,充电指示灯会闪烁两下。
- 当放手机充电时,充电指示灯长亮一分钟后自动熄灭。
- 当异物检测时,充电指示灯会快速闪烁。

台灯功能操作方法

- 当旋钮开关向右边旋转时,灯光开启,一直向右旋转,灯光的亮度逐渐增加;当旋钮开关向左边旋转,灯光逐渐变暗,甚至关灯;当播放音乐时不能调节灯光亮度。
- 台灯可以上下左右调节。



蓝牙音响的操作方法

当电源线插上时,长按旋钮开关2秒,蓝牙功能打开,处于准备配对状态,表明音响在搜索配对状态,此时打开您手机的蓝牙功能,在蓝牙设备中,搜索蓝牙音响出现“S31”字样,点击选中“S31”设备名称;自动进入配对,配对连接成功后,会有提示音。

旋钮开关使用方法:

- 当播放音乐时,
 - 一、旋钮开关往右转动增加音量,增加至最大音量时,会有提示音;往左转动音量。
 - 二、短按旋钮播放/暂停。
 - 三、长按旋钮开关2秒取消蓝牙配对,进入搜索状态。



适用设备

本产品支持快速无线充电功能,符合Qi无线充电标准;通过磁感应方式实现短距离无线电能传输,本设备支持所有符合Qi标准的无线充电设备,使用5V输出的适配器时,无线充电支持5W负载,使用符合QC2.0及以上标准的适配器时,无线充电支持10W负载;设有过充保护(9V)及过流保护(2A)。

注意事项

- 请勿长时间在阳光直射或高温的地方使用、存放该产品。
- 请勿在离磁卡、磁记录媒体和精密的仪器太近的地方充电。
- 请勿分解或者改造本产品。
- 请勿用湿手触碰交流适配器。
- 请将本产品远离水或其它液体。
- 如果您想清洁本产品,请断开电源。
- 产品工作环境温度范围:-20~45°C。

无线充规格参数

产品材料:进口ABS+PC+五金
电源输入:DC5V/2A 9V/2A
充电效率:75%
功率:10W/15W
产品尺寸:290×140×406mm
产品重量:594g
电源充电口为国际通用Type-C端口

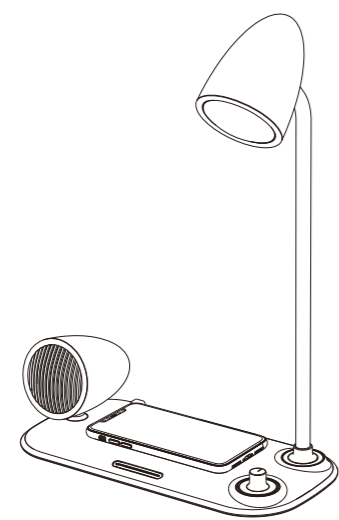
音箱规格参数

蓝牙版本:5.0
蓝牙距离:10m
喇叭功率:4Q5W
喇叭规格:50mm

CE RoHS 中国制造

WIRELESS CHARGER WIRELESS SPEAKER+TABLE LAMP

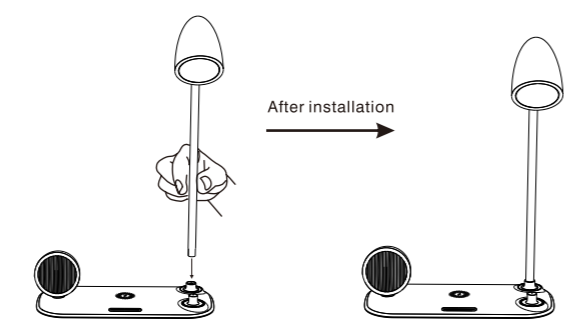
PRODUCT INSTRUCTIONS



Thank you so much for choosing our product, please read the manual carefully before using the product.

TABLE LAMP INSTALLATIO METHOD

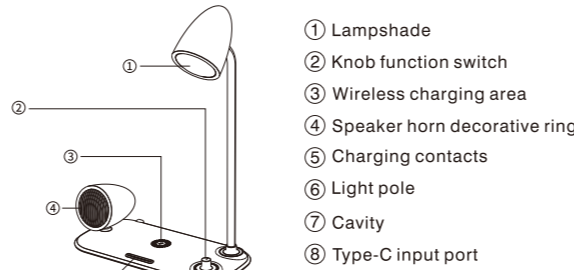
Align the light pole with the DC socket and install it on the main body.



FEATURES

- The shape is simple and delicate, with antique style.
- Antique small table lamp.
- Bluetooth Speaker.
- Knob dimming.
- Knob to adjust volume.
- 15W wireless fast charging.
- Charging distance≤8mm.

APPERANCE BUTTONS



- ① Lampshade
- ② Knob function switch
- ③ Wireless charging area
- ④ Speaker horn decorative ring
- ⑤ Charging contacts
- ⑥ Light pole
- ⑦ Cavity
- ⑧ Type-C input port

OPERATION METHOD

1. Connect the USB port of the USB data cable to the power adapter, and the Type-C port to the wireless charger.
2. After the product is powered on, the charging indicator will flash twice.
3. Put the required wireless charging equipment in the charging indication area of this product, and the charging indicator will stay on for one minute to enter the charging state.

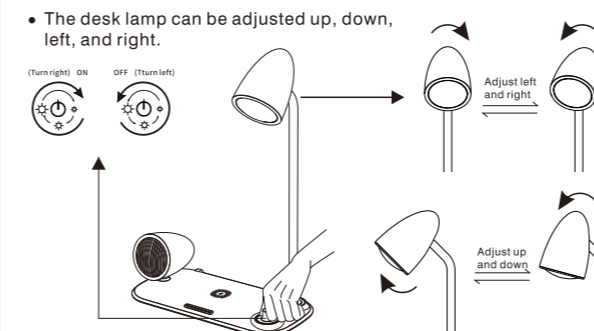


CHARGING INDICATOR FUNCTION

- When the product is powered on, the charging indicator will flash twice.
- When the phone is charged, the charging indicator will turn off automatically after a long light on for one minute.
- When a foreign object is detected, the charging indicator will flash quickly.

TABLE LAMP FUNCTION OPERATION METHOD

- When the rotary switch is turned to the right, the light is turned on, and when it is turned to the right, the brightness of the light gradually increases; when the rotary switch is turned to the left, the light gradually dims, or even turns off the light. The brightness of the light cannot be adjusted when playing music.

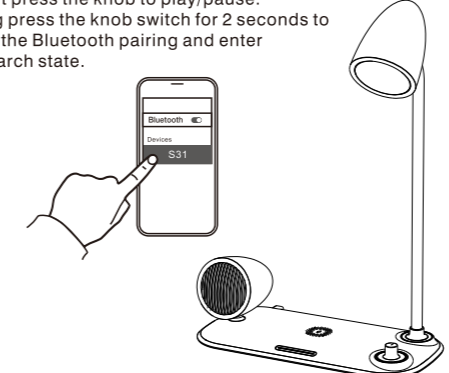


HOW TO OPERDTE THE BLUETOOTH SPEAKER

When the power cord is plugged in, press and hold the knob switch for 2 seconds, the Bluetooth function is turned on and it is in the state of preparing for pairing, indicating that the speaker is searching for pairing. At this time, turn on the Bluetooth function of your mobile phone. In the Bluetooth device, search for the Bluetooth speaker and "S31", click to select the "S31" device name; automatically enter the pairing, after the pairing connection is successful, there will be a prompt sound.

How to use the knob switch:

- When playing music,
 1. Turn the rotary switch to the right to increase the volume. When it reaches the maximum volume, there will be a prompt sound; turn the left to decrease the volume.
 2. Short press the knob to play/pause.
 3. Long press the knob switch for 2 seconds to cancel the Bluetooth pairing and enter the search state.



APPLICABLE DEVICE

This product supports fast wireless charging, which complies with the Qi wireless charging standard; it realizes short-distance wireless power transmission through magnetic induction. **This device supports all wireless charging devices that meet the Qi standard.** When using a 5V output adapter, Wireless charging supports 5W load. When using an adapter that meets QC2.0 and above standards, the wireless charging supports 10W load; Support overcharge protection (9V) and overcurrent protection (2A).

ATTENTION POINTS

- Do not use or store the product in direct sunlight or high temperature places for a long time.
- Do not charge in places too close to magnetic cards, magnetic recording media, and precision instruments.
- Do not disassemble or modify this product.
- Do not touch the AC adapter with wet hands.
- Keep this product away from water or other liquids.
- If you want to clean the product, please disconnect the power.
- Product working environment temperature range: -20~45°C.

WIRELESS CHARGING SPECIFICATIONS

Material:Imported ABS+PC+Hardware
Input:DC5V/2A 9V/2A
Charging efficiency:75%
Power:10W/15W
Product size:209×140×426mm
Product weight:594g
Charging port:Universal Type-C

SPEAKER SPECIFICATIONS

Bluetooth version:5.0
Bluetooth distance:10m
Speaker power:4Q5W
Speaker specifications:50mm

CE RoHS Made in China

7## † o
#

u
" h 7## k u

u

=

@

- - k

- - @

- - #

- - #

ut

u 7## k \ two conditions:

(1) This device may not cause harmful interference, and (2) this device must accept any interference received, including interference that may cause undesired operation.

RF Exposure Statement

To maintain compliance with FCC's RF Exposure guidelines, This equipment should be installed and operated with minimum distance of 20cm the radiator your body. This device and its antenna(s) must not be co-located or operation in conjunction with any other antenna or transmitter