

# WEWATCH V10A Household LED Projector

Quick Start Guide



Multifunctional projector

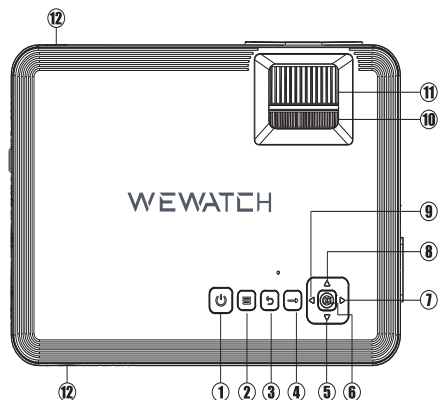
## Precautions

In order to ensure the safe use of this machine, please read it carefully before using it.

## Warning

In order to prevent fire or electric shock, do not place the machine in a place with heavy humidity, or block the ventilation holes, or use it at a temperature not lower than 35°C. If there is any problem, please entrust an expert for repair or maintenance.

## Projector Overview



7:Right:In the home screen/browser/menu, move the cursor to the right.

8:Left:In the home screen/browser/menu, move the cursor to the left.

9:Up:In the home screen/browser/menu, move the cursor up.

10:Keystone correction:When the upper and lower widths of the projected picture are inconsistent, you can adjust the distorted picture by turning this button.

(Note:In order to make the left and right widths the same, the main body can be adjusted by moving it in the left and right directions.)

11:Zoom lever:When using or moving the camera for the first time, you can use this switch to adjust the focus of the image.

12:IR:Remote control signal receiver. Operate the remote control for the receiver and projection screen of the main unit.

## Warm tip: please refer to the real object

1:Power:Power on/off.

2:Menu key:Press this button to enter the setting interface.

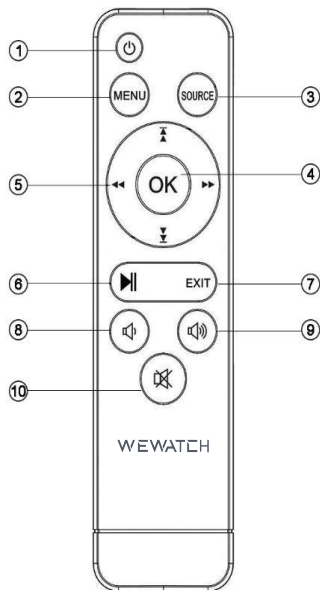
3:Return key:Return back to the previous status.

4:Signal source key:Press this button to enter the signal source selection interface.

5:Down:In the home screen/browser/menu, let the cursor move down.

6:OK:Enter

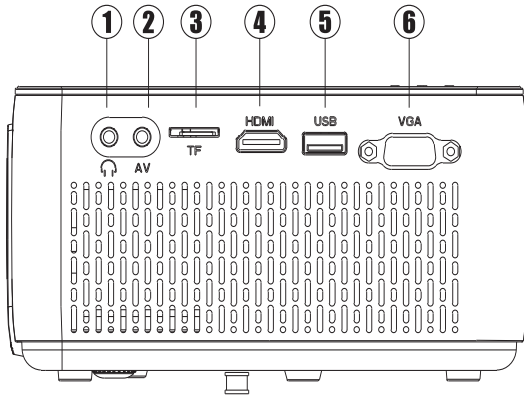
## Remote control



### Warm tips: please refer to the real object

- 1: Power button: Turn on/off the device.
- 2: Menu: enter the menu
- 3: Signal source: select the signal source
- 4: OK: Enter
- 5: Arrow keys: Up, down, left, and right selection functions.
- 6: play/Pause
- 7: Exit
- 8: Volume down
- 9: Volume up
- 10: Mute

## Interfaces



1:Headphone terminal:3.5mm headphone jack.

2:Video input terminal:Press the S button on the main body and the Source button on the remote control, select the AV function on the pop-up screen, and use the 3.5mm device to input video and sound.

Note:This machine cannot operate the device, it can only play audio/video.

3:Micro SD card slot:select the multimedia function on the home page screen. It can support up to 64GB Micro SD card.

4:HDMI:Input via HDMI cable. Press the Source button on the remote control and select the HDMI function on the pop-up screen. Note:This machine cannot operate the device, it can only play audio/video. The maximum resolution of 1080P can be supported.

5:USB interface:Insert a USB memory and select multimedia functions on the homepage screen. It can support hard drives up to 1TB.

6:Computer image input terminal:input with VGA connector, press the S button of the main body and the Source button of the remote control, and select the VGA function on the pop-up screen.

Note:This machine cannot operate the device, it can only play audio/video. The maximum resolution of 1080P can be supported.

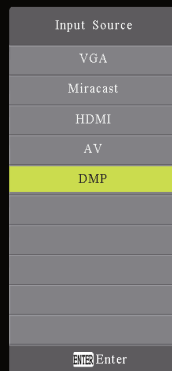
7:Exhaust port:Do not block the suction port and exhaust port of the machine. If the suction port and the exhaust port are blocked, it is easy to malfunction.

## Home page



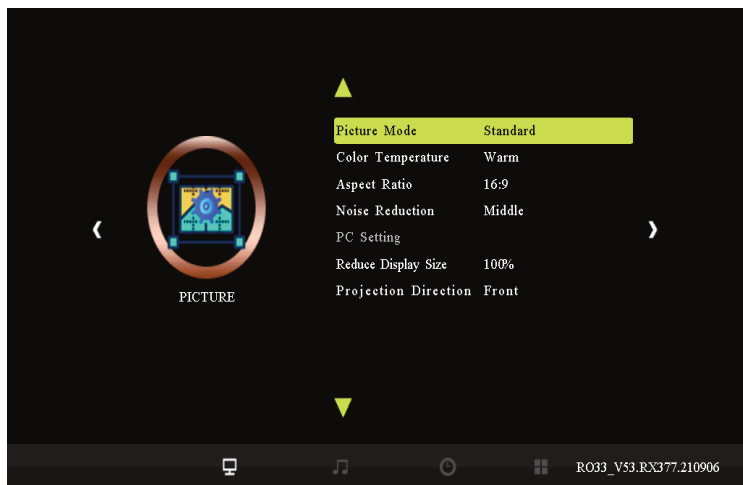
Cursor selection: Use the remote control or the navigation buttons of the machine to move the cursor, select the function, and press OK to confirm.

## Signal source interface

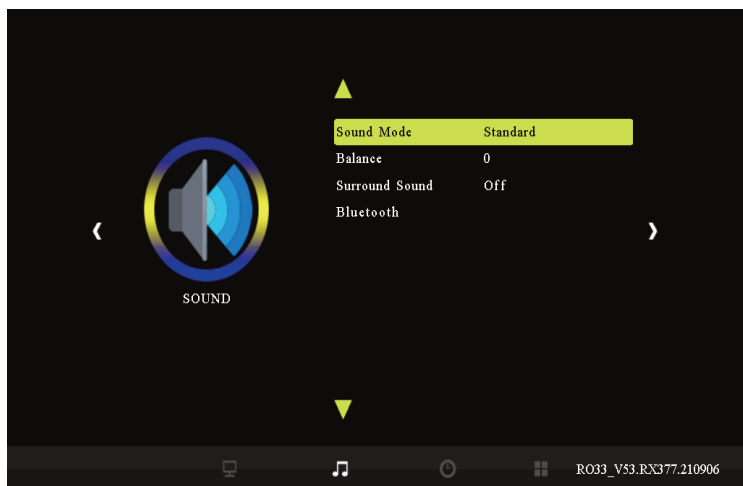


Enter this interface through the S button on the host or the Source button on the remote control, where different inputs can be selected.

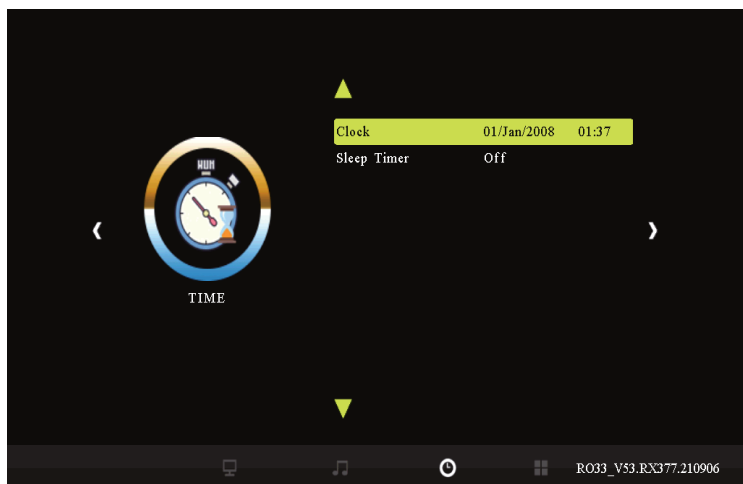
## System menu



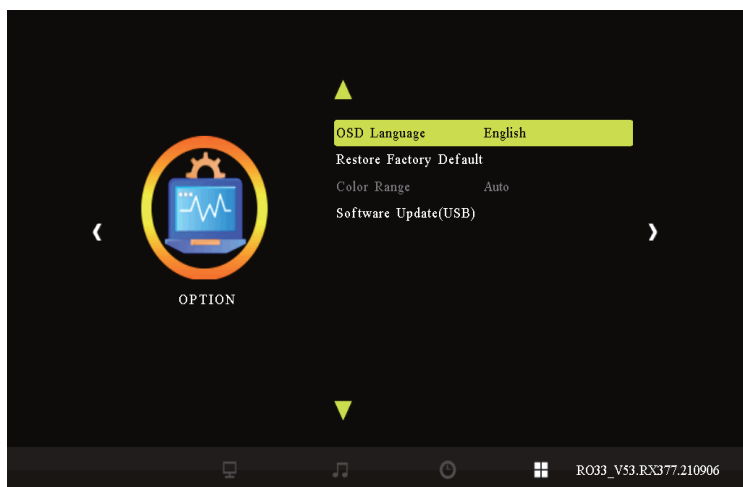
Picture Mode



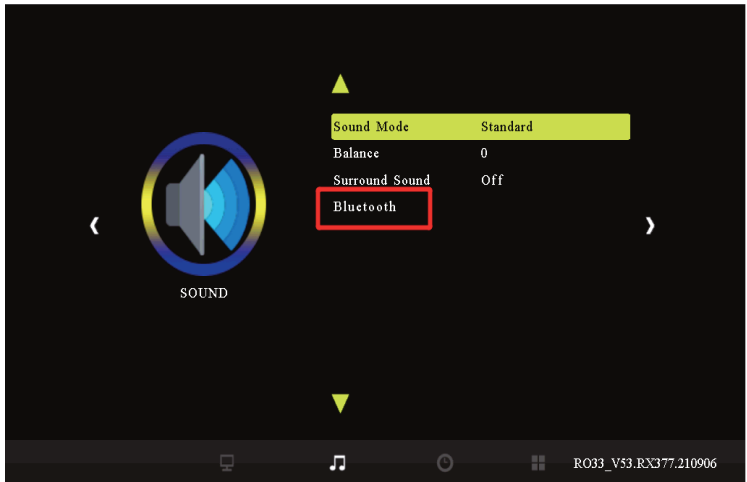
Sound Mode



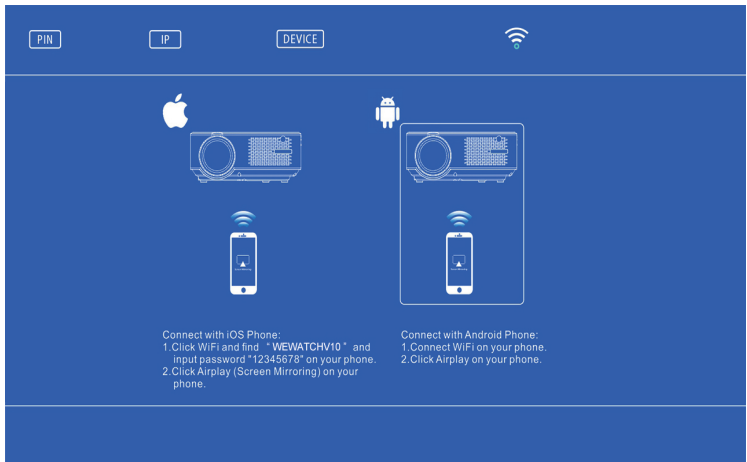
Time



System setting

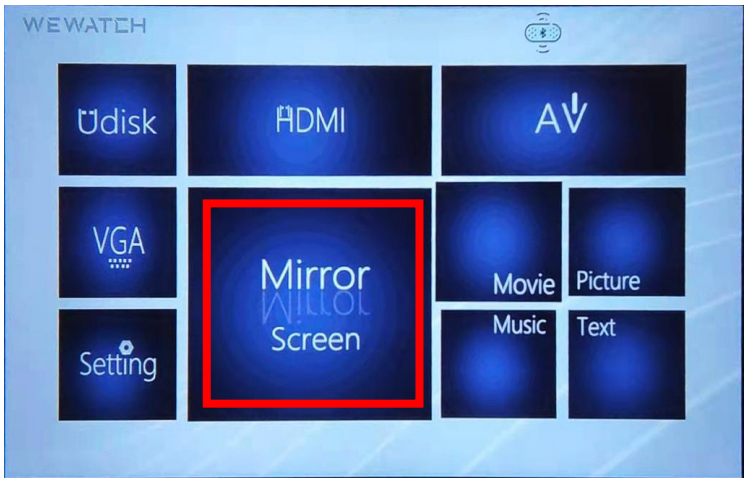


Enter the settings interface, select Bluetooth, enter Turn on Bluetooth, then search for Bluetooth devices, and select the device that needs to be matched.



Mirror screening function





Tips:

- 1: Fits for: iOS device requires IOS 7 and above, Android device, system requires Android 4.2 and above.
- 2: Due to the HDCP copyright, all the LCD projectors don't support protected videos when "Mirroring" with smartphones, such as "Netflix, Amazon Prime Video and Hulu". You can play Netflix app or Prime video directly when connected with laptop, Macbook, amazon fire ty stick and the other TV box!



# Airplay

1.1 Turn on the screen mirroring of the projector;

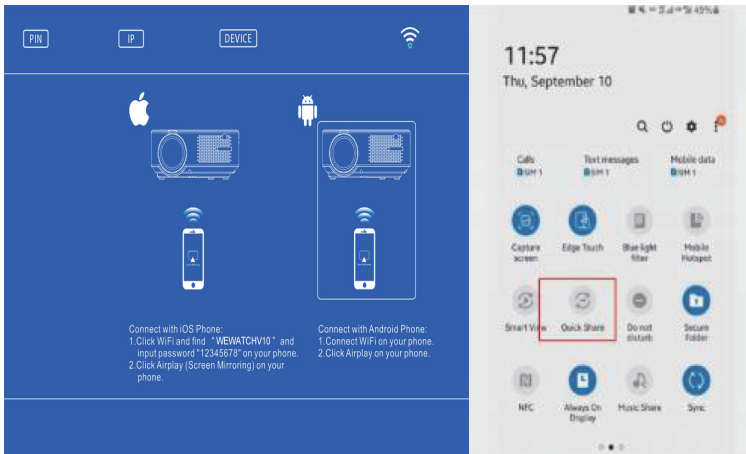
1.2 Open the WIFI setting of the iphone or ipad device, search for the WIFI name of the projector: WEWATCHV10-\*\*\*, click to enter the password:12345678, click to connect.

1.3 Open the screen mirroring settings of the phone or ipad, find the WIFI name of the projector WEWATCHV10-\*\*\*, and click connect;

1.4 The mirroring is successful.

Tips:If there is a pause or delay during playback, you can close other programs on your IOS device.

Because too much software running on the phone will affect the smoothness of the projection.



1.1 Turn on the phone screen mirroring, click the screen mirroring function on the device, find the WIFI of the projector:WEWATCHV10-\*\*\*, enter the password:12345678, and click connect;

1.2 Open the screen sharing settings on Android Mobile/Pad, find the WIFI of the projector: WEWATCHV10-\*\*\*, click connect

1.3 Screen mirroring is successful

## ► Projector Specifications

<b>Model No.: V10</b>			
Display Technology	LCD	Light Source	LED
Resolution	Native 1024X600	Focus	Manual
Installation Type	Front/Rear/Ceiling	Aspect Ratio	4:3/16:9/Auto/ Zoom1/Zoom 2
Product Size	228*170*87.5mm	Product Weight	1.1kg
Input Interface	HDMI/USB/AV	Output Interface	Audio out

## ► Multimedia Supported Files

Files	Support
Audio Format	MP2/MP3/PCM/FLAC
Video Format	AVI/MP4/MKV/FLV/MOV/3GP/MPEG1/MPEG2/H.264/XVID
Image Format	.jpg / .png / .bmp/.jpeg

## Safety instructions

Read the Quick Start Guide:Please read this guide carefully before operating the machine.Keep the Quick Start Guide:For future reference, please keep this guide in a safe place.Keep the user manual with the device:Please keep the user manual or guide with the device.General operation:Please connect the cable that matches the terminal.Note:If the cable does not match the connecting terminal, do not insert it forcibly.Water or humidity:Do not use it in a place with water or where it gets wet. For example, please do not take the shower, basin, kitchen sink, wetUse near heavy basements, swimming pools, etc.Walls and display places:Please allow users with projector installation skills to fix the unit on the wall or display place. Heat:Please keep the machine away from heaters, stoves and other heating devices. Power supply:The machine is powered by a dedicated power supply. Foreign matter or water:Please use it in a safe place to prevent foreign matter or water from entering the machine. Bearing device:Since it will damage the light-emitting part, please do not drop or hit the device when moving or using the bearing device.



## FCC WARNING

This device complies with part 15 of the FCC Rules. Operation is subject to the following two conditions: (1) this device may not cause harmful interference, and (2) this device must accept any interference received, including interference that may cause undesired operation.

Any changes or modifications not expressly approved by the party responsible for compliance could void the user's authority to operate the equipment.

NOTE: This equipment has been tested and found to comply with the limits for a Class B digital device, pursuant to Part 15 of the FCC Rules. These limits are designed to provide reasonable protection against harmful interference in a residential installation. This equipment generates, uses and can radiate radio frequency energy and, if not installed and used in accordance with the instructions, may cause harmful interference to radio communications.

However, there is no guarantee that interference will not occur in a particular installation.

If this equipment does cause harmful interference to radio or television reception, which can be determined by turning the equipment off and on, the user is encouraged to try to correct the interference by one or more of the following measures:

- Reorient or relocate the receiving antenna.
- Increase the separation between the equipment and receiver.
- Connect the equipment into an outlet on a circuit different from that to which the receiver is connected.
- Consult the dealer or an experienced radio/TV technician for help.

To maintain compliance with FCC's RF Exposure guidelines, This equipment should be installed and operated with minimum distance between 20cm the radiator your body: Use only the supplied antenna.