



SPECIFICATION FOR APPROVAL

File No. 2021111901
1.0

CUSTOMER: _____

2300-W1011D-01

CUSTOMER NO: _____

2.4GHz Antenna L=100MM

PART NAME: _____

SL186P.300046.P01

SUPPLIER NO: _____

Date:

Q'TY:

PCS

CUSTOMER APPROVED BY		
APPROVAL	CHIEF	SUPERVISOR

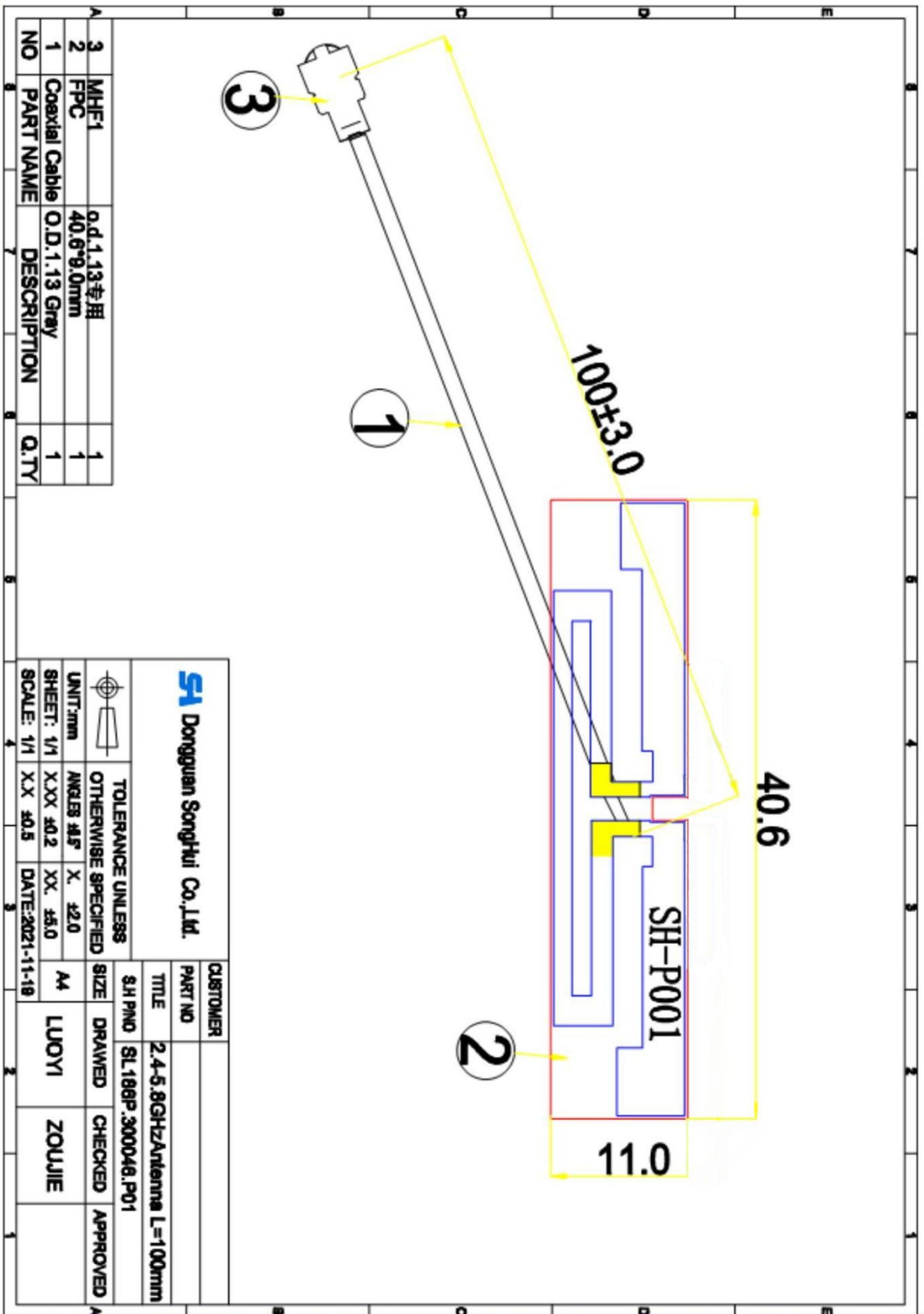
SUPPLIER SIGNATURE		
APPROVAL	CHECK	DESIGN
sunny	ZouJie	LuoYi



Acknowledgment item list

NO.	(Contents)	(Number of Page)	(Page Code)
1	Spec Cover	1	1
2	Spec Item	1	2
3	Drawing	1	3
4	Test Reports	1	4
5	S Parameter	1	5
6	Gain Test	1	6
7			
8			
9			
10	-	-	-
11	-	-	-
12	-	-	-

add: No. 26, Foxin Juxiang 2nd Road, Dalang Town, Dongguan
City: 0769-82226176 fax: 0769-82226175



NO	PART NAME	DESCRIPTION	Q.TY
3	MHF1	φd.1.13专用	1
2	FPC	40.6±0.0mm	1
1	Coaxial Cable	O.D.1.13 Gray	1

		TOLERANCE UNLESS OTHERWISE SPECIFIED	
UNIT:mm	ANGLES:45°	X.	±2.0
SHEET: 1/1	XXX:±0.2	XX.	±5.0
SCALE: 1/1	XX:±0.5	DATE:	2021-11-19
CUSTOMER: SH Dongguan Songhui Co., Ltd.		PART NO:	
TITLE: 2.4-5.8GHzAntenna L=100mm		SH PNO:	SL188P_300046.P01
SIZE: A4	DRAWN: LUDYI	CHECKED: ZOUJIE	APPROVED:

add: No. 26, Foxin Juxiang 2nd Road, Dalang Town, Dongguan
City: 0769-82226176 fax: 0769-82226175



Test Reports

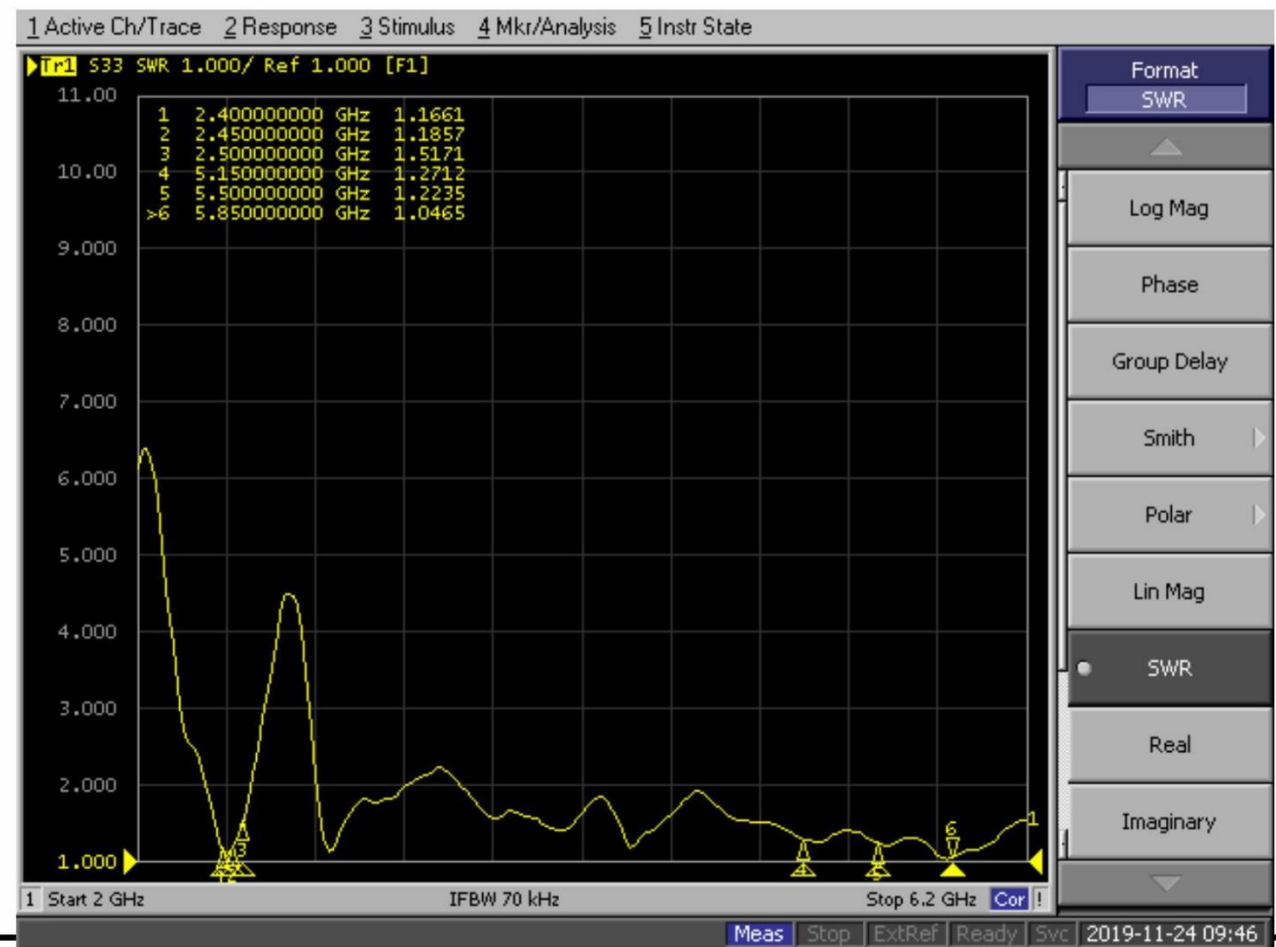
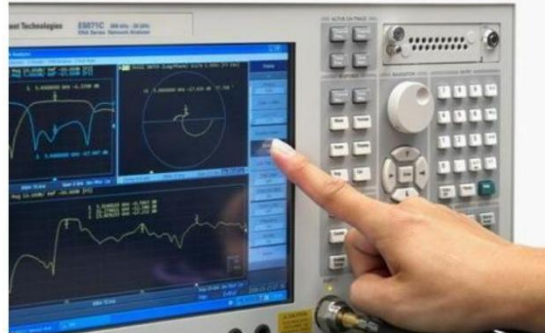
Electrical Properties	
Frequency	2.4 GHz
Impedance	50 Ohm Nominal
V.S.W.R	1.92 : 1 Max
Return Loss	-10 dB Max
Radiation	Omni-directional
Gain (Peak)	2.4GHz (4.14dBi) ± 0.5
Cable Loss	3.2dB / m Max @ 2450 MHz
Polarization	Linear, Vertical
Admitted Power	1 W
Connector	MHF1
Physical Properties	
Antenna Material	FPC
Cable Type	O.D. 1.13mm // L= 100mm
Operating Temp.	-10 ~ +60 °C
Storage Temp.	-10 ~ +70 °C
Cable Color	GRAY

add: No. 26, Foxin Juxiang 2nd Road, Dalang Town, Dongguan
City: 0769-82226176 fax: 0769-82226175



S Parameter Test

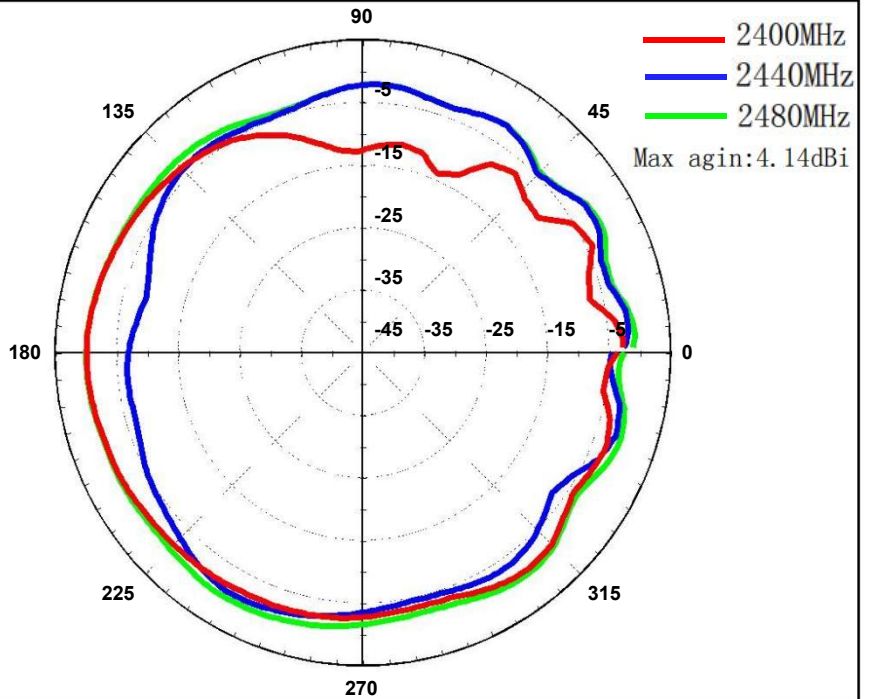
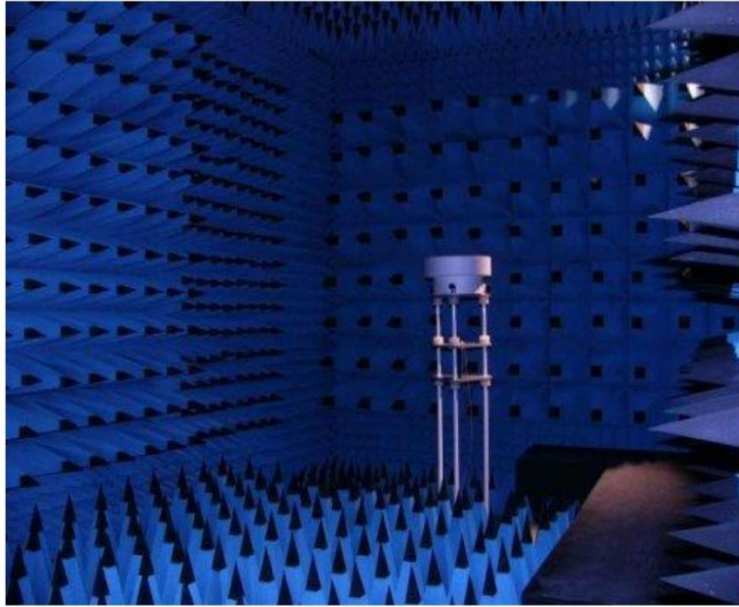
Agilent E5071C



add: No. 26, Foxin Juxiang 2nd Road, Dalang Town, Dongguan
City: 0769-82226176 fax: 0769-82226175

Gain Test

*Antenna
Radiation
Pattern
VS
Gain*



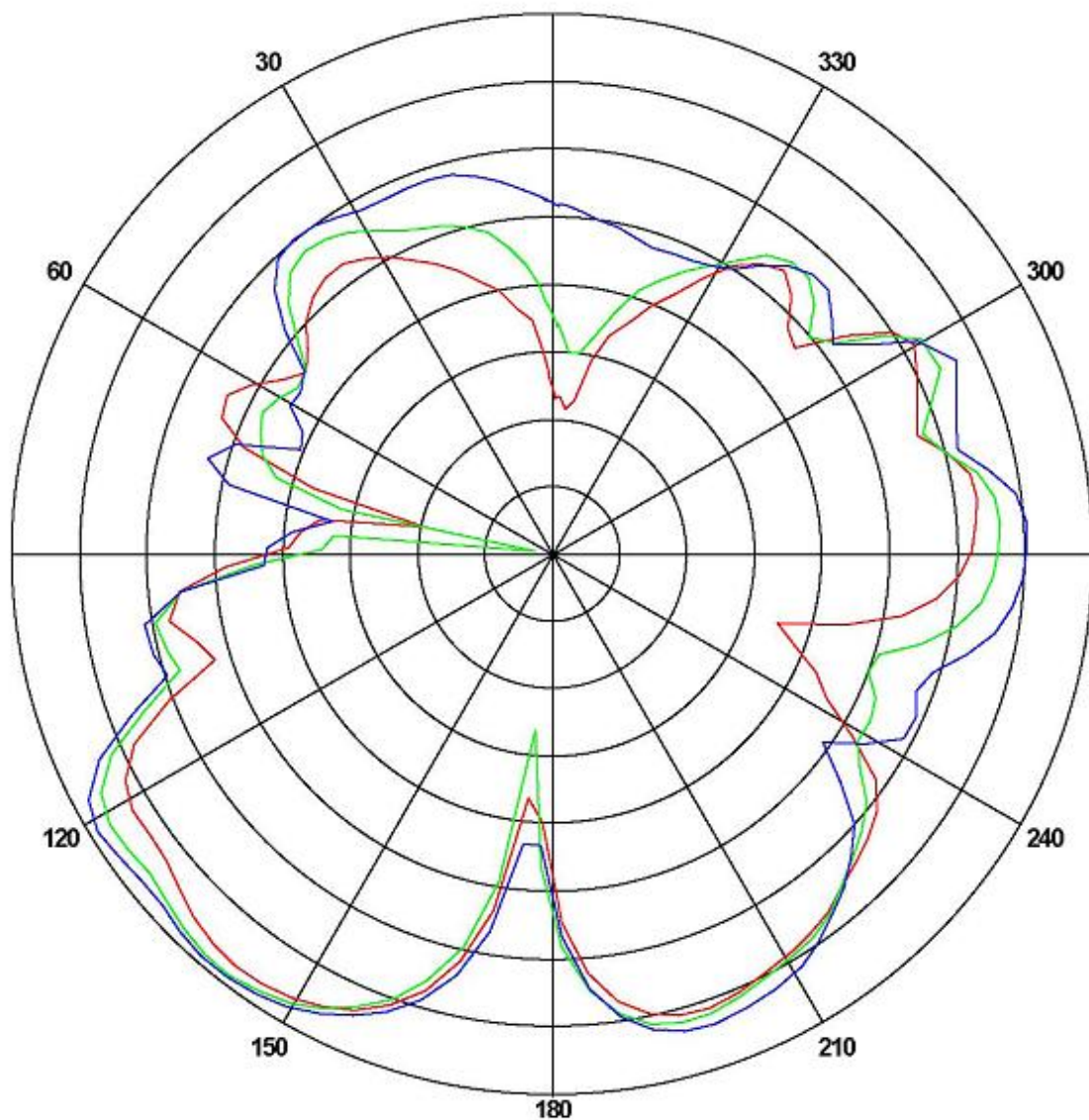


Horizontal:

Power (dBm)

Max: 0 Min: -40 Scale: 5/div

- 2400MHz
- 2440MHz
- 2480MHz

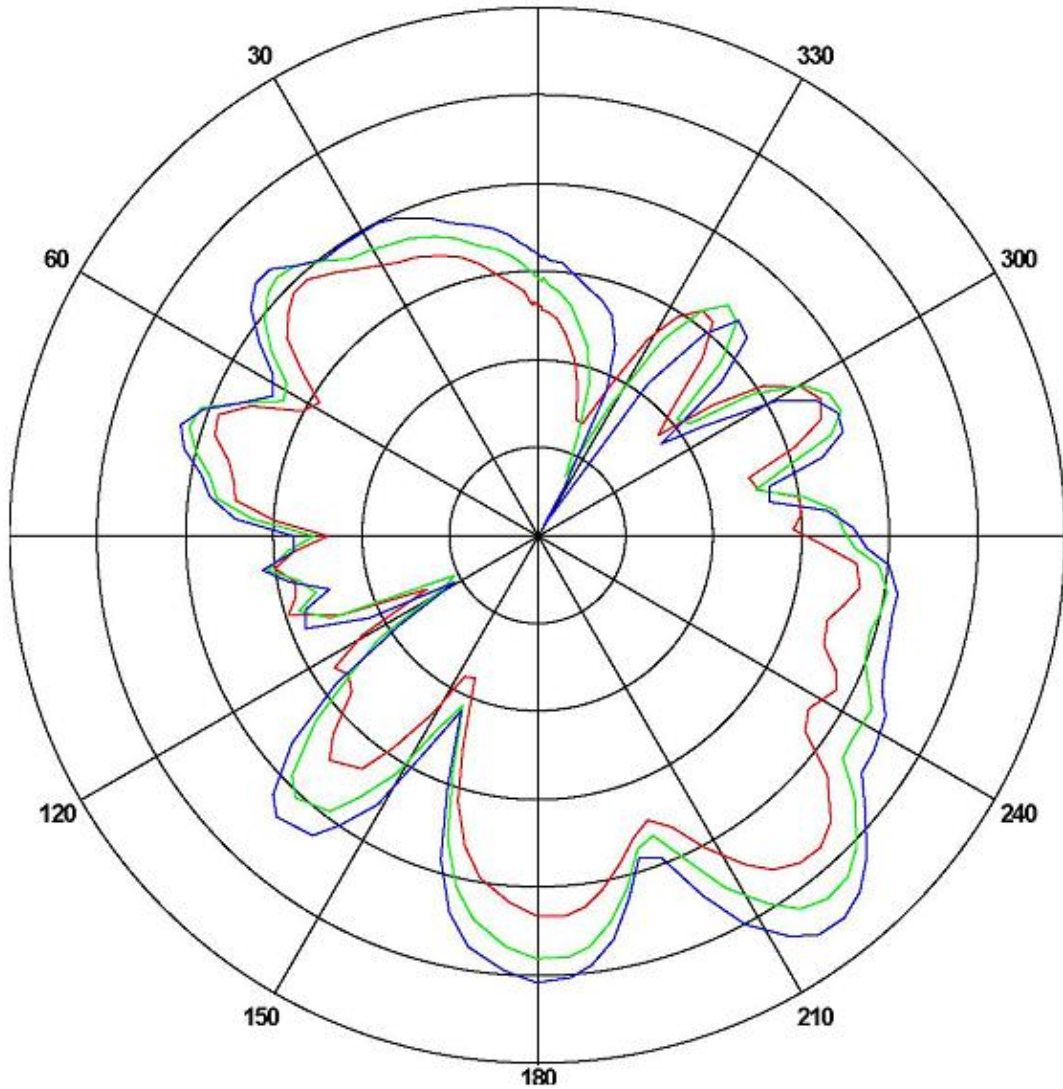


add: No. 26, Foxin Juxiang 2nd Road, Dalang Town, Dongguan
City: 0769-82226176 fax: 0769-82226175



Vertical:
Power (dBm)
Max: 0 Min: -30 Scale: 5/div

— 2400MHz
— 2440MHz
— 2480MHz



add: No. 26, Foxin Juxiang 2nd Road, Dalang Town, Dongguan
City: 0769-82226176 fax: 0769-82226175



Passive Test For 2.4

Freq (MHz)	Effi (%)	Effi (dB)	Gain (dBi)	Gain (dBd)	UHS (%)	DHS (%)	Max (dB)	Min (dB)	Attenut Hor	Attenut Ver
2400	46.52	-3.32	2.78	0.63	31.864	14.658	2.78	-24.58	50.91	50.87
2410	50.35	-2.98	3.13	0.98	34.55	15.804	3.13	-25.07	51.03	50.97
2420	56.06	-2.51	3.63	1.48	38.44	17.623	3.63	-26.31	50.9	50.84
2430	54.23	-2.66	3.51	1.36	36.913	17.321	3.51	-31.62	51.06	51.01
2440	55.35	-2.57	3.64	1.49	37.718	17.627	3.64	-29.32	50.91	50.89
2450	58.27	-2.35	4.01	1.86	40.009	18.26	4.01	-23.35	51.1	51.09
2460	56.74	-2.46	3.93	1.78	39.575	17.162	3.93	-20.79	51.29	51.33
2470	54.35	-2.65	3.83	1.68	38.028	16.323	3.83	-20.55	51.23	51.27
2480	57.44	-2.41	4.14	1.99	40.602	16.842	4.14	-20.8	51.41	51.5
2490	49.88	-3.02	3.6	1.45	35.525	14.354	3.6	-21.87	51.67	51.77
2500	43.08	-3.66	2.91	0.76	30.876	12.206	2.91	-21.28	51.75	51.89

2400.00MHz - 2500.00MHz Gain

