

General programmable sensor instructions

Before installing the sensor, be sure to read the installation instructions carefully and operate according to the requirements:

1. Do not use sensors with damaged appearance;
2. The installation process should be operated by trained professionals according to the guidance requirements;
3. The warranty period is 12 months or 20000 km, whichever comes first

Screw、Shell、Valve、Valve Cap



Product Name: Tpms Sensor

working voltage:3V

Emission current:6.7MA

Air pressure range:0-5.8Bar

Air pressure accuracy:±0.1Bar

Temperature accuracy:±3°C

working temperature:-40°C-105°C

working frequency: 314.985MHz/433.89MHz

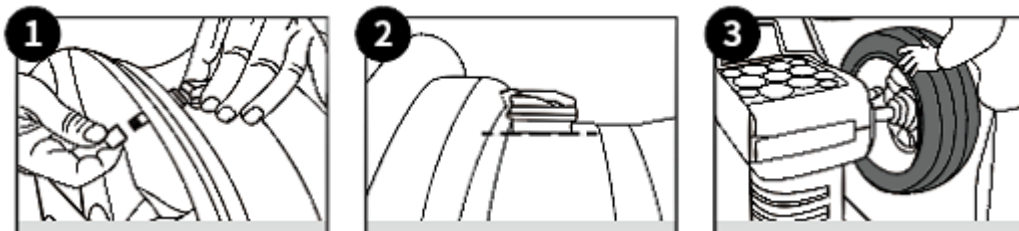
Product weight:21.8g

Operation steps:

1. Before the sensor is installed, it should be programmed with ateq tool according to the model year;
2. Install it on the wheel hub according to the following figure:

Select the direction suitable for the angle and screw on the air nozzle nut

Keep the white surface of the sensor parallel to the wheel hub surface, and tighten the air nozzle nut with 8nm torque Tire power balance



Installation precautions:

1. The valve should not extend out of the rim
2. The sensor shell shall not interfere with the wheel rim
3. The white surface of the sensor shall be parallel to the rim surface
4. The sensor housing must not extend beyond the rim flange

FCC Statement

This device complies with part 15 of the FCC rules. Operation is subject to the following two conditions: (1) this device may not cause harmful interference, and (2) this device must accept any interference received, including interference that may cause undesired operation.

Caution: Changes or modifications not expressly approved by the party responsible for compliance could void the user's authority to operate the equipment.

NOTE: This equipment has been tested and found to comply with the limits for a Class B digital de

vice, pursuant to part 15 of the FCC Rules. These limits are designed to provide reasonable protection against harmful interference in a residential installation. This equipment generates uses and

can radiate radio frequency energy and, if not installed and used in accordance with the instructions, may cause harmful interference to radio communications. However, there is no guarantee that interference will not occur in a particular installation. If this equipment does cause harmful interference to radio or television reception, which can be determined by turning the equipment off and on, the user is encouraged to try to correct the interference by one or more of the following measures:

- Reorient or relocate the receiving antenna.
- Increase the separation between the equipment and receiver.
- Connect the equipment into an outlet on a circuit different from that to which the receiver is connected.
- Consult the dealer or an experienced radio/TV technician for help important announcement

RF Exposure Information

This equipment complies with FCC radiation exposure limits set forth for an uncontrolled environment. This equipment should be installed and operated with minimum distance 20cm between the radiator and your body.