

# TEST REPORT

**Applicant:** E&S International Enterprises, Inc.  
**Address:** 7801 Hayvenhurst Avenue, Van Nuys, CA 91406, USA  
**Equipment Type:** LAPTOP  
**Model Name:** VWN71529 (refer section 2.4)  
**Brand Name:** VAIO  
**FCC ID:** 2AYPE-VWNR15AMD  
**Test Standard:** FCC 47 CFR Part 2.1093 (refer section 3.1)  
**Maximum SAR:** Body 2.4GHz(1 g@0mm): 0.91 W/kg  
Body 5GHz(1 g@0mm): 1.07 W/kg  
**Test Date:** Oct. 14, 2022 - Oct. 15, 2022  
**Date of Issue:** 2022.10.14, 2022

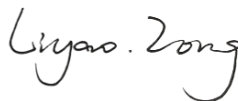
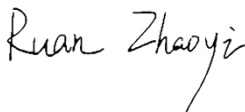
**ISSUED BY:**

Shenzhen BALUN Technology Co., Ltd.

**Tested by:** Ruan Zhaoyi

**Checked by:** Liyao Zong

**Approved by:** Wei Yanquan  
(Chief Engineer)



<b>Revision History</b>		
Version	Issue Date	Revisions Content
Rev. 01	Nov. 04, 2022	Initial Issue

## TABLE OF CONTENTS

1	GENERAL INFORMATION.....	4
1.1	Test Laboratory .....	4
1.2	Test Location .....	4
1.3	Test Environment Condition.....	4
2	PRODUCT INFORMATION .....	5
2.1	Applicant Information .....	5
2.2	Manufacturer Information.....	5
2.3	Factory Information.....	5
2.4	General Description for Equipment under Test (EUT).....	5
2.5	Ancillary Equipment.....	5
2.6	Technical Information .....	6
3	SUMMARY OF TEST RESULT .....	7
3.1	Test Standards .....	7
3.2	Device Category and SAR Limit .....	8
3.3	Test Result Summary .....	9
3.4	Test Uncertainty .....	10
4	MEASUREMENT SYSTEM .....	11
4.1	Specific Absorption Rate (SAR) Definition .....	11
4.2	DASY SAR System .....	12
5	SYSTEM VERIFICATION .....	20
5.1	Purpose of System Check .....	20
5.2	System Check Setup .....	20
6	TEST POSITION CONFIGURATIONS .....	21
6.1	Laptop Exposure Condition.....	21

7	MEASUREMENT PROCEDURE .....	22
7.1	Measurement Process Diagram .....	22
7.2	SAR Scan General Requirement .....	23
7.3	Measurement Procedure .....	24
7.4	Area & Zoom Scan Procedure .....	24
8	CONDUCTED RF OUPUT POWER .....	25
8.1	WIFI.....	25
8.2	Bluetooth (Antenna B) .....	39
9	TEST EXCLUSION CONSIDERATION .....	41
9.1	Laptop Mode antenna location sketch .....	41
9.2	SAR Test Consideration Table .....	42
10	TEST RESULT .....	45
10.1	Bluetooth .....	45
10.2	WIFI 2.4GHz.....	45
10.3	WIFI 5GHz.....	46
11	SAR Measurement Variability .....	47
12	SIMULTANEOUS TRANSMISSION.....	48
12.1	Simultaneous Transmission Mode Considerations .....	48
12.2	Sum SAR of Simultaneous Transmission .....	49
13	TEST EQUIPMENTS LIST .....	50
ANNEX A	SIMULATING LIQUID VERIFICATION RESULT .....	51
ANNEX B	SYSTEM CHECK RESULT .....	52
ANNEX C	TEST DATA.....	61
ANNEX D	EUT EXTERNAL PHOTOS.....	91
ANNEX E	SAR TEST SETUP PHOTOS .....	91
ANNEX F	CALIBRATION REPORT .....	91

# 1 GENERAL INFORMATION

## 1.1 Test Laboratory

Name	Shenzhen BALUN Technology Co., Ltd.
Address	Block B, 1/F, Baisha Science and Technology Park, Shahe Xi Road, Nanshan District, Shenzhen, Guangdong Province, P. R. China
Phone Number	+86 755 6685 0100

## 1.2 Test Location

Name	Shenzhen BALUN Technology Co., Ltd.
Location	<input checked="" type="checkbox"/> Block B, 1/F, Baisha Science and Technology Park, Shahe Xi Road, Nanshan District, Shenzhen, Guangdong Province, P. R. China
	<input type="checkbox"/> 1/F, Building B, Ganghongji High-tech Intelligent Industrial Park, No. 1008, Songbai Road, Yangguang Community, Xili Sub-district, Nanshan District, Shenzhen, Guangdong Province, P. R. China
Accreditation Certificate	The laboratory is a testing organization accredited by FCC as a accredited testing laboratory. The designation number is CN1196.

## 1.3 Test Environment Condition

Ambient Temperature	18°C to 25°C
Ambient Relative Humidity	30% to 70%

## 2 PRODUCT INFORMATION

### 2.1 Applicant Information

Applicant	E&S International Enterprises, Inc.
Address	7801 Hayvenhurst Avenue, Van Nuys, CA 91406, USA

### 2.2 Manufacturer Information

Manufacturer	E&S International Enterprises, Inc.
Address	7801 Hayvenhurst Avenue, Van Nuys, CA 91406, USA

### 2.3 Factory Information

Factory	Shenzhen Bmorn Technology Co., Ltd
Address	20th Floor, Building 1, WanTing Building, Baoyuan Road, Baoan District, Shenzhen., Guangdong, P.R. China

### 2.4 General Description for Equipment under Test (EUT)

EUT Name	LAPTOP
Model Name Under Test	VWNR71529
Series Model Name	VWNR71529-BK, VWNR71529-SL, VWNR71529-BL, VWNR71529-RG
Description of Model Name Differentiation	All models are same with electrical parameters and internal circuit structure, but only differ in shell color and model name (this information provided by the customer).
Hardware Version	EM_AB528_V2.0
Software Version	22H2
Dimensions (Approx.)	N/A
Weight (Approx.)	N/A

### 2.5 Ancillary Equipment

Ancillary Equipment 1	Battery	
	Brand Name	VAIO
	Model No.	575983
	Serial No.	N/A
	Capacity	4780 mAh
	Rated Voltage	11.55 V
	Limit Charge Voltage	13.20 V

## 2.6 Technical Information

Network and Wireless connectivity	Bluetooth (BR+EDR+BLE) WIFI 802.11a, 802.11b, 802.11g, 802.11n, 802.11ac and 802.11ax U-NII-1/2A/2C/3
-----------------------------------	---

The requirement for the following technical information of the EUT was tested in this report:

Operating Mode	2.4G WLAN, 5G WLAN, Bluetooth	
Frequency Range	802.11b/g/n (HT20/HT40)	2412 ~ 2462 MHz
	802.11ax (HE20/40)	2412 ~ 2462 MHz
	802.11a/n (HT20/HT40)	5150 ~ 5250 MHz
		5250 ~ 5350 MHz
		5470 ~ 5725 MHz
	802.11ac (VHT20/VHT40/VHT80)	5725 ~ 5850 MHz
		5150 ~ 5250 MHz
		5250 ~ 5350 MHz
		5470 ~ 5725 MHz
	802.11ax (HE20/HE40/HE80)	5725 ~ 5850 MHz
5150 ~ 5250 MHz		
5250 ~ 5350 MHz		
	5470 ~ 5725 MHz	
	5725 ~ 5850 MHz	
	Bluetooth	2402 MHz ~ 2480 MHz
Antenna Type	WLAN: PIFA Antenna Bluetooth: PIFA Antenna	
Hotspot Function	N/A	
Exposure Category	General Population/Uncontrolled exposure	
EUT Stage	Portable Device	
Product	Type	
	<input checked="" type="checkbox"/> Production unit	<input type="checkbox"/> Identical prototype

### 3 SUMMARY OF TEST RESULT

#### 3.1 Test Standards

No.	Identity	Document Title
1	47 CFR Part 2.1093	Radiofrequency radiation exposure evaluation: portable devices
2	ANSI C95.1-1992	IEEE Standard for Safety Levels with Respect to Human Exposure to Radio Frequency Electromagnetic Fields, 3 kHz to 300 GHz
3	FCC KDB 447498 D04 v01	RF Exposure Procedures and Equipment Authorization Policies for Mobile and Portable Devices
4	FCC KDB 865664 D01 v01r04	SAR Measurement 100 MHz to 6 GHz
5	FCC KDB 865664 D02 v01r02	RF Exposure Reporting
6	KDB 248227 D01 v02r02	SAR Guidance for IEEE 802.11 (Wi-Fi) Transmitters
7	KDB 616217 D04v01r02	SAR for laptop and tablets

### 3.2 Device Category and SAR Limit

This device belongs to portable device category because its radiating structure is allowed to be used within 20 centimeters of the body of the user.

Limit for General Population/Uncontrolled exposure should be applied for this device, it is 1.6 W/kg as averaged over any 1 gram of tissue.

Table of Exposure Limits:

Body Position	SAR Value (W/Kg)	
	General Population/ Uncontrolled Exposure	Occupational/ Controlled Exposure
Whole-Body SAR (averaged over the entire body)	0.08	0.4
Partial-Body SAR (averaged over any 1 gram of tissue)	1.60	8.0
SAR for hands, wrists, feet and ankles (averaged over any 10 grams of tissue)	4.0	20.0

**NOTE:**

**General Population/Uncontrolled Exposure:** Locations where there is the exposure of individuals who have no knowledge or control of their exposure. General population/uncontrolled exposure limits are applicable to situations in which the general public may be exposed or in which persons who are exposed as a consequence of their employment may not be made fully aware of the potential for exposure or cannot exercise control over their exposure. Members of the general public would come under this category when exposure is not employment-related; for example, in the case of a wireless transmitter that exposes persons in its vicinity.

**Occupational/Controlled Exposure:** Locations where there is exposure that may be incurred by persons who are aware of the potential for exposure, In general, occupational/controlled exposure limits are applicable to situations in which persons are exposed as a consequence of their employment, who have been made fully aware of the potential for exposure and can exercise control over their exposure. This exposure category is also applicable when the exposure is of a transient nature due to incidental passage through a location where the exposure levels may be higher than the general population/uncontrolled limits, but the exposed person is fully aware of the potential for exposure and can exercise control over his or her exposure by leaving the area or by some other appropriate means.



### 3.3 Test Result Summary

#### 3.3.1 Highest SAR (1 g Value)

Frequency Band		Maximum Report SAR (W/kg) 1 g	
		Body SAR (Separation 0 mm)	
		Aux. Antenna	Main Antenna
WIFI	2.4G	0.91	0.22
	5.3G	<b>1.07</b>	0.80
	5.6G	0.63	0.91
	5.8G	0.80	0.93
Bluetooth	BLE-1M	0.04	/
Maximum Report SAR		1.07	0.93
Highest Simultaneous Transmission SAR		<b>1.13</b>	
Limits (W/kg)		1.60	
Test Verdict		Pass	

#### 3.3.2 Highest Simultaneous Transmission SAR Values (1 g Value)

Note: The simultaneous transmission SAR detail please refer to section 12.

### 3.4 Test Uncertainty

According to KDB 865664 D01, when the highest measured 1 g SAR within a frequency band is  $< 1.5$  W/kg, the extensive SAR measurement uncertainty analysis is not required in SAR reports submitted for equipment approval.

The maximum 1 g SAR for the EUT in this report is 1.07 W/kg, which is lower than 1.5 W/kg, so the extensive SAR measurement uncertainty analysis is not required in this report.

## 4 MEASUREMENT SYSTEM

### 4.1 Specific Absorption Rate (SAR) Definition

SAR is related to the rate at which energy is absorbed per unit mass in an object exposed to a radio field. The SAR distribution in a biological body is complicated and is usually carried out by experimental techniques or numerical modeling. The standard recommends limits for two tiers of groups, occupational/controlled and general population/uncontrolled, based on a person's awareness and ability to exercise control over his or her exposure. In general, occupational/controlled exposure limits are higher than the limits for general population/uncontrolled.

The SAR definition is the time derivative (rate) of the incremental energy ( $dW$ ) absorbed by (dissipated in) an incremental mass ( $dm$ ) contained in a volume element ( $dv$ ) of a given density ( $\rho$ ). The equation description is as below:

$$SAR = \frac{d}{dt} \left( \frac{dW}{dm} \right) = \frac{d}{dt} \left( \frac{dW}{\rho dv} \right)$$

SAR is expressed in units of Watts per kilogram (W/kg) SAR measurement can be related to the electrical field in the tissue by

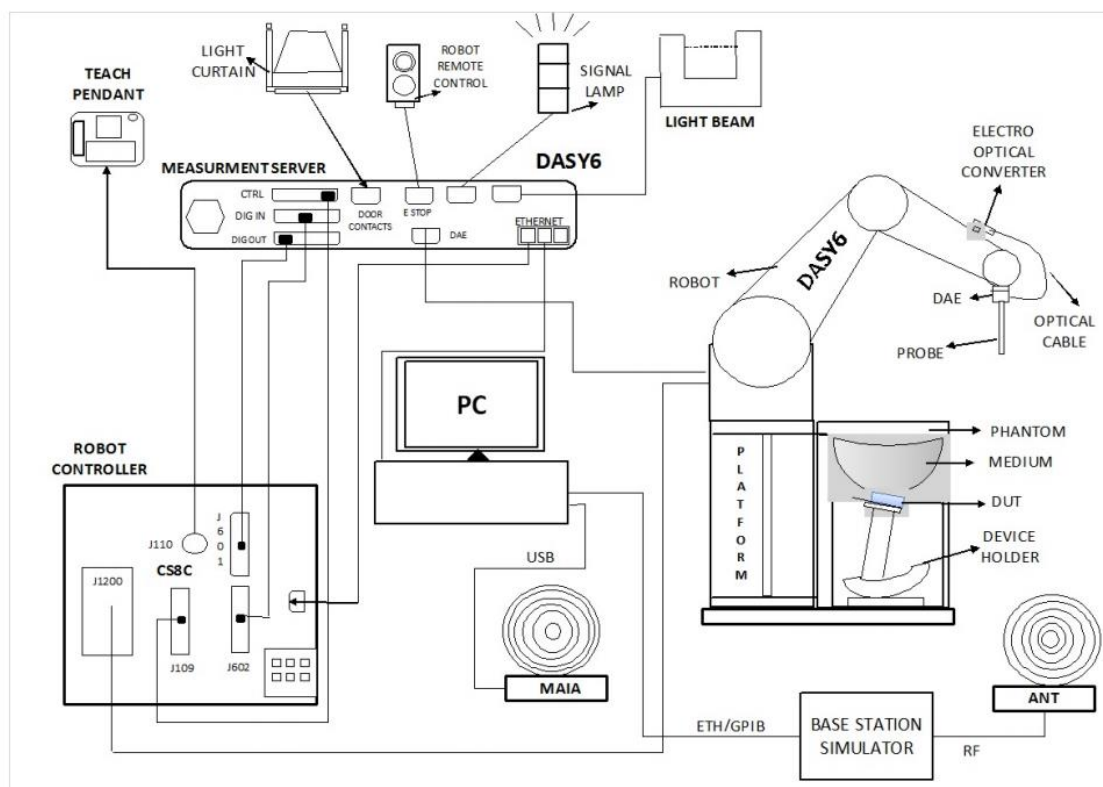
$$SAR = \frac{\sigma E^2}{\rho}$$

Where:  $\sigma$  is the conductivity of the tissue,

$\rho$  is the mass density of the tissue and  $E$  is the RMS electrical field strength.

## 4.2 DASY SAR System

### 4.2.1 DASY SAR System Diagram



The DASY6 system for performing compliance tests consists of the following items:

1. A standard high precision 6-axis robot (Stäubli RX family) with controller and software. An arm extension for accommodating the data acquisition electronics (DAE).
2. A dosimetric probe, i.e. an isotropic E-field probe optimized and calibrated for usage in tissue simulating liquid. The probe is equipped with an optical surface detector system.
3. A data acquisition electronic (DAE) which performs the signal amplification, signal multiplexing, AD-conversion, offset measurements, mechanical surface detection, collision detection, etc. The unit is battery powered with standard or rechargeable batteries. The signal is optically transmitted to the EOC.
4. A unit to operate the optical surface detector which is connected to the EOC.
5. The Electro-Optical Coupler (EOC) performs the conversion from the optical into a digital electric signal of the DAE. The EOC is connected to the DASY measurement server.
6. The DASY measurement server, which performs all real-time data evaluation for field measurements and surface detection, controls robot movements and handles safety operation.
7. DASY software and SEMCAD data evaluation software.
8. Remote control with teach panel and additional circuitry for robot safety such as warning lamps, etc.
9. The generic twin phantom enabling the testing of left-hand and right-hand usage.
10. The device holder for handheld mobile phones.
11. Tissue simulating liquid mixed according to the given recipes.
12. System validation dipoles allowing to validate the proper functioning of the system.

## 4.2.2 Robot

The Dasy SAR system uses the high precision robots. Symmetrical design with triangular core Built-in optical fiber for surface detection system For the 6-axis controller system, Built-in shielding against static charges PEEK enclosure material (resistant to organic solvents). The robot series have many features that are important for our application:



- **High precision**  
(repeatability  $\pm 0.02$  mm)
- **High reliability**  
(industrial design)
- **Low maintenance costs**  
(virtually maintenance free due to direct drive gears; no belt drives)
- **Jerk-free straight movements**  
(brush less synchron motors; no stepper motors)
- **Low ELF interference**  
(motor control \_elds shielded via the closed metallic construction shields)

### 4.2.3 E-Field Probe

The probe is specially designed and calibrated for use in liquids with high permittivities for the measurements the Specific Dosimetric E-Field Probe EX3DV4-SN: 7607 with following specifications is used.

Construction	Symmetrical design with triangular core Built-in optical fiber for surface detection system Built-in shielding against static charges PEEK enclosure material (resistant to organic solvents, e.g., glycolether)
Calibration	ISO/IEC 17025 calibration service available
Frequency	10 MHz to 6 GHz; Linearity: $\pm 0.2$ dB (30 MHz to 6 GHz)
Directivity	$\pm 0.2$ dB in HSL (rotation around probe axis) ; $\pm 0.4$ dB in HSL (rotation normal to probe axis)
Dynamic range	5 $\mu$ W/g to > 100 mW/g; Linearity: $\pm 0.2$ dB
Dimensions	Overall length: 337 mm (Tip: 9 mm) Tip diameter: 2.5 mm (Body: 10 mm) Distance from probe tip to dipole centers: 1.0 mm
Application	General dosimetry up to 3 GHz Compliance tests of mobile phones Fast automatic scanning in arbitrary phantoms (EX3DV4)



#### E-Field Probe Calibration Process

Probe calibration is realized, in compliance with CENELEC EN 62209-1/-2 and IEEE 1528 std, with CALISAR, Antennassa proprietary calibration system. The calibration is performed with the EN 62209-1/2 annexe technique using reference guide at the five frequencies.

#### 4.2.4 Data Acquisition Electronics

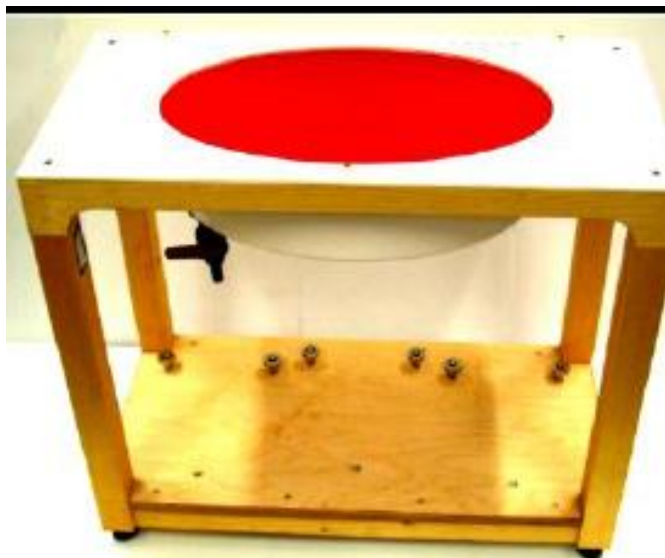
The data acquisition electronics (DAE) consist of a highly sensitive electrometer-grade preamplifier with auto-zeroing, a channel and gain-switching multiplexer, a fast 16 bit AD-converte and a command decoder with a control logic unit. Transmission to the measurement server is accomplished through an optical downlink for data and status information, as well as an optical uplink for commands and the clock.



- Input Impedance: 200M $\Omega$ m
- The Inputs: Symmetrical and Floating
- Commom Mode Rejection: Above 80dB

### 4.2.5 Phantoms

Phantom for compliance testing of handheld and body-mounted wireless devices in the frequency range of 30 MHz to 6 GHz. ELI4 is fully compatible with the latest draft of the standard IEC 62209 Part II and all known tissue simulating liquids. ELI4 has been optimized regarding its performance and can be integrated into our standard phantom tables. A cover prevents evaporation of the liquid. Reference markings on the phantom allow installation of the complete setup, including all predefined phantom positions and measurement grids, by teaching three points.



· Flat phantom

Photo of Phantom SN1012



Serial Number	Shell Thickness (mm)	Major ellipse axis (mm)	Minor axis ( mm )
SN 1012 ELI4	2.0 ± 0.2	600	500



#### 4.2.6 Device Holder

The DASY device holder has two scales for device rotation (with respect to the body axis) and the device inclination (with respect to the line between the ear openings). The plane between the ear openings and the mouth tip has a rotation angle of  $65^\circ$ . The bottom plate contains three pair of bolts for locking the device holder. The device holder positions are adjusted to the standard measurement positions in the three sections. This device holder is used for standard mobile phones or PDA"s only. If necessary an additional support of polystyrene material is used. Larger DUT"s (e.g. notebooks) cannot be tested using this device holder. Instead a support of bigger polystyrene cubes and thin polystyrene plates is used to position the DUT in all relevant positions to find and measure spots with maximum SAR values. Therefore those devices are normally only tested at the flat part of the SAM.

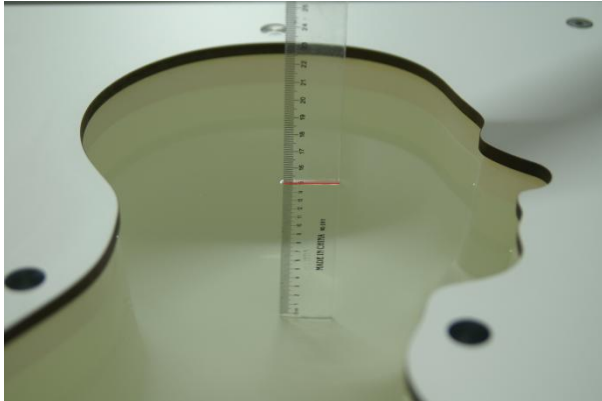


The positioning system allows obtaining cheek and tilting position with a very good accuracy. Incompliance with CENELEC, the tilt angle uncertainty is lower than  $1^\circ$ .

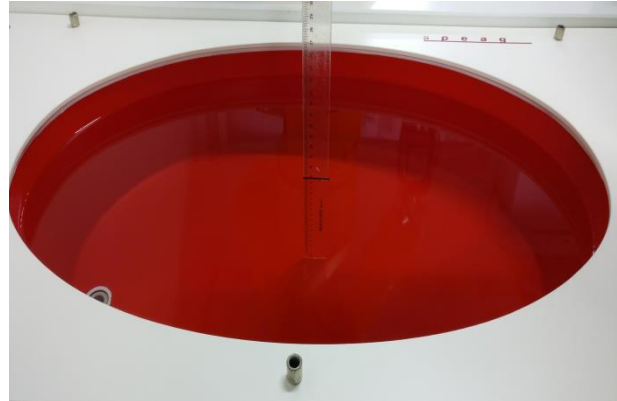
#### 4.2.7 Simulating Liquid

For SAR measurement of the field distribution inside the phantom, the phantom must be filled with homogeneous tissue simulating liquid to a depth of at least 15 cm. For head SAR testing, the liquid height from the ear reference point (ERP) of the phantom to the liquid top surface is larger than 15 cm. For body SAR testing, the liquid height from the center of the flat phantom to the liquid top surface is larger than 15 cm. The nominal dielectric values of the tissue simulating liquids in the phantom and the tolerance of 5%.

**Head Liquid Depth**



**Body Liquid Depth**



The following table gives the recipes for tissue simulating liquid and the theoretical Conductivity/Permittivity.

Head (Reference IEEE1528)								
Frequency (MHz)	Water (%)	Sugar (%)	Cellulose (%)	Salt (%)	Preventol (%)	DGBE (%)	Conductivity $\sigma$ (S/m)	Permittivity $\epsilon$
750	41.1	57.0	0.2	1.4	0.2	0	0.89	41.9
835	40.3	57.9	0.2	1.4	0.2	0	0.90	41.5
900	40.3	57.9	0.2	1.4	0.2	0	0.97	41.5
1800, 1900, 2000	55.2	0	0	0.3	0	44.5	1.4	40.0
2450	55.0	0	0	0.1	0	44.9	1.80	39.2
2600	54.9	0	0	0.1	0	45.0	1.96	39.0
Frequency (MHz)	Water (%)	Hexyl Carbitol (%)			Triton X-100 (%)		Conductivity $\sigma$ (S/m)	Permittivity $\epsilon$
5200	62.52	17.24			17.24		4.66	36.0
5800	62.52	17.24			17.24		5.27	35.3
Body (From instrument manufacturer)								
Frequency (MHz)	Water (%)	Sugar (%)	Cellulose (%)	Salt (%)	Preventol (%)	DGBE (%)	Conductivity $\sigma$ (S/m)	Permittivity $\epsilon$
750	51.7	47.2	0	0.9	0.1	0	0.96	55.5
835	50.8	48.2	0	0.9	0.1	0	0.97	55.2
900	50.8	48.2	0	0.9	0.1	0	1.05	55.0
1800, 1900, 2000	70.2	0	0	0.4	0	29.4	1.52	53.3
2450	68.6	0	0	0.1	0	31.3	1.95	52.7
2600	68.2	0	0	0.1	0	31.7	2.16	52.5
Frequency(MHz)	Water	DGBE			Salt		Conductivity	Permittivity

		(%)	(%)	$\sigma$ (S/m)	$\epsilon$
5200	78.60	21.40	/	5.54	47.86
5800	78.50	21.40	0.1	6.0	48.20

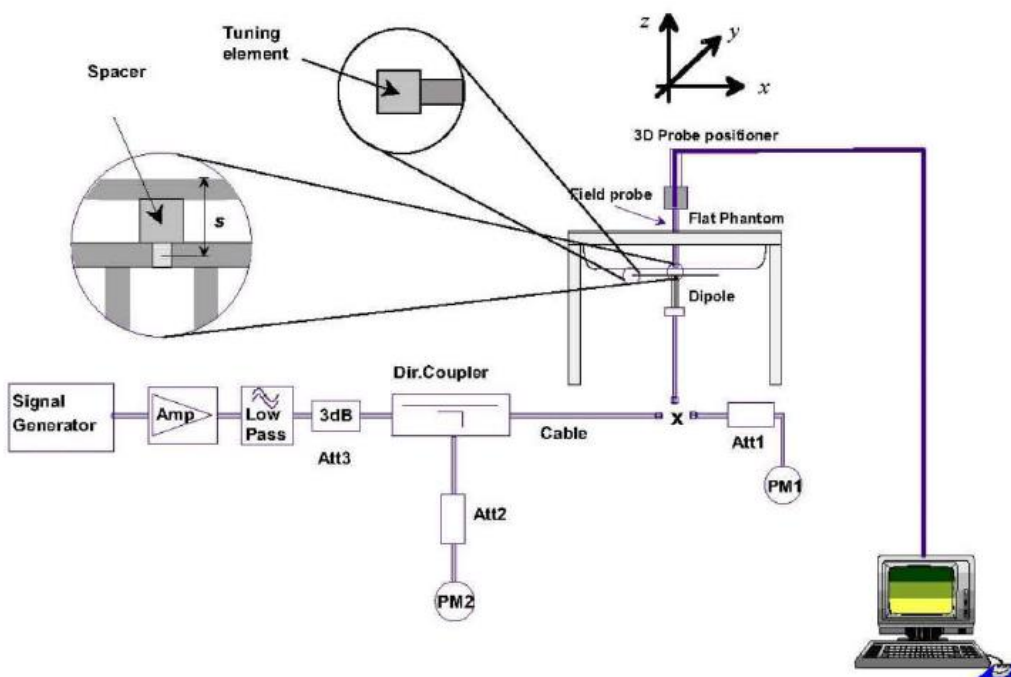
## 5 SYSTEM VERIFICATION

### 5.1 Purpose of System Check

The system performance check verifies that the system operates within its specifications. System and operator errors can be detected and corrected. It is recommended that the system performance check be performed prior to any usage of the system in order to guarantee reproducible results. The system performance check uses normal SAR measurements in a simplified setup with a well characterized source. This setup was selected to give a high sensitivity to all parameters that might fail or vary over time. The system check does not intend to replace the calibration of the components, but indicates situations where the system uncertainty is exceeded due to drift or failure.

### 5.2 System Check Setup

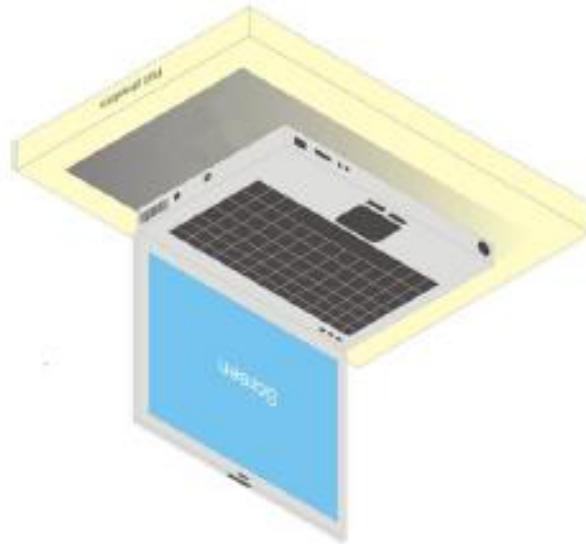
In the simplified setup for system evaluation, the EUT is replaced by a calibrated dipole and the power source is replaced by a continuous wave that comes from a signal generator. The calibrated dipole must be placed beneath the flat phantom section of the SAM twin phantom with the correct distance holder. The distance holder should touch the phantom surface with a light pressure at the reference marking and be oriented parallel to the long side of the phantom. The equipment setup is shown below:



## 6 TEST POSITION CONFIGURATIONS

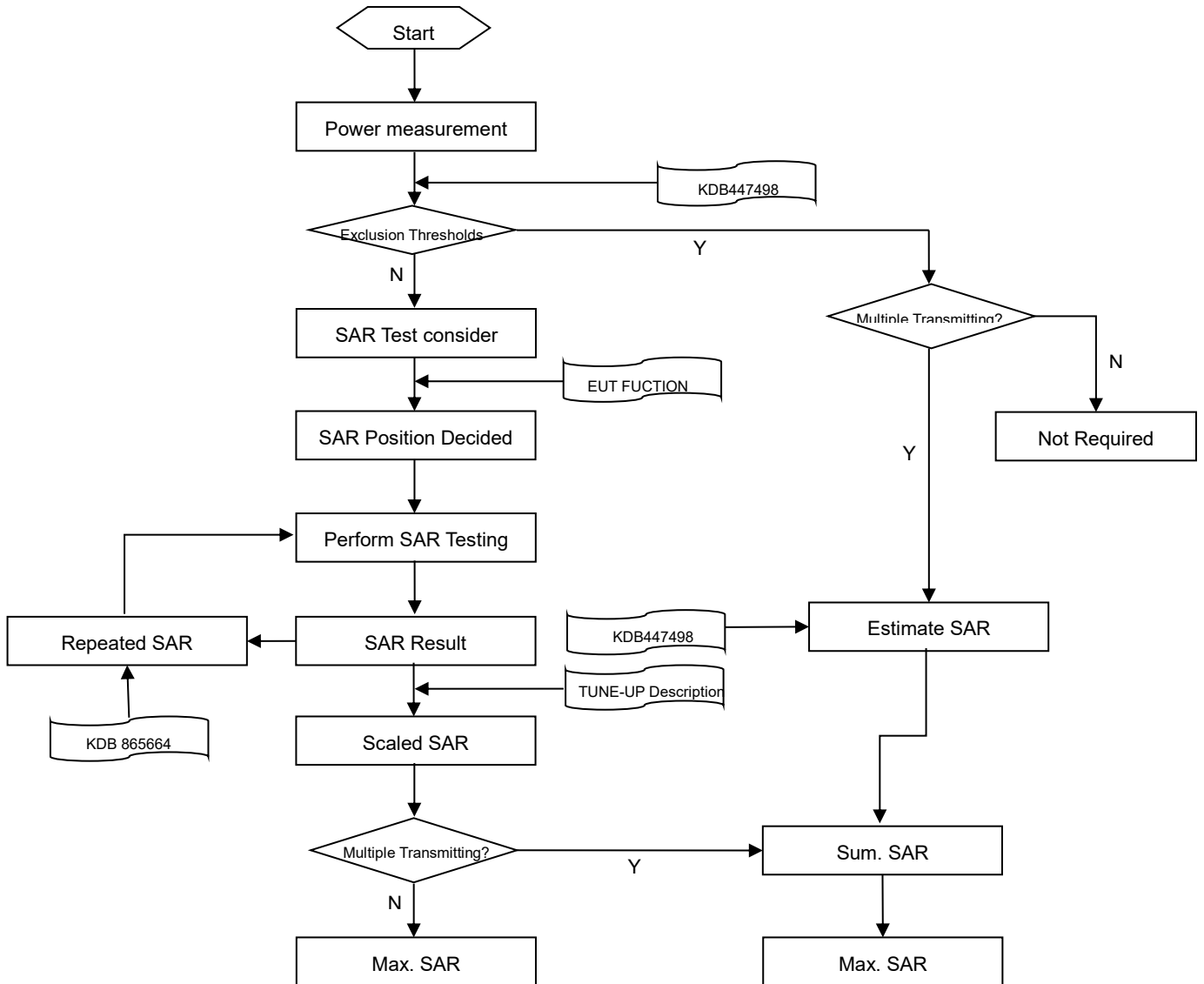
### 6.1 Laptop Exposure Condition

This DUT should consider one position which is bottom of laptop touching with phantom 0 mm air gap and the screen portion of the device shall be an open position at a 90° angle.



## 7 MEASUREMENT PROCEDURE

### 7.1 Measurement Process Diagram



## 7.2 SAR Scan General Requirement

Probe boundary effect error compensation is required for measurements with the probe tip closer than half a probe tip diameter to the phantom surface. Both the probe tip diameter and sensor offset distance must satisfy measurement protocols; to ensure probe boundary effect errors are minimized and the higher fields closest to the phantom surface can be correctly measured and extrapolated to the phantom surface for computing 1 g SAR. Tolerances of the post-processing algorithms must be verified by the test laboratory for the scan resolutions used in the SAR measurements, according to the reference distribution functions specified in IEEE Std 1528-2013.

		≤3GHz	>3GHz
Maximum distance from closest measurement point (geometric center of probe sensors) to phantom surface		5±1 mm	$\frac{1}{2} \cdot \delta \cdot \ln(2) \pm 0.5$ mm
Maximum probe angle from probe axis to phantom surface normal at the measurement location		30°±1°	20°±1°
Maximum area scan spatial resolution: $\Delta x$ Area , $\Delta y$ Area		≤ 2 GHz: ≤ 15 mm 2 – 3 GHz: ≤ 12 mm	3–4 GHz: ≤ 12 mm 4 – 6 GHz: ≤ 10 mm
		When the x or y dimension of the test device, in the measurement plane orientation, is smaller than the above, the measurement resolution must be ≤ the corresponding x or y dimension of the test device with at least one measurement point on the test device.	
Maximum zoom scan spatial resolution: $\Delta x$ Zoom , $\Delta y$ Zoom		≤ 2 GHz: ≤ 8 mm 2 – 3 GHz: ≤ 5 mm*	3–4 GHz: ≤ 5 mm* 4 – 6 GHz: ≤ 4 mm*
Maximum zoom scan spatial resolution, normal to phantom surface	uniform grid: $\Delta z$ Zoom (n)	≤ 5 mm	3–4 GHz: ≤ 4 mm
			4–5 GHz: ≤ 3 mm
			5–6 GHz: ≤ 2 mm
	graded grid	$\Delta z$ Zoom (1): between 1st two points closest to phantom surface  $\Delta z$ Zoom (n>1): between subsequent points	≤ 4 mm
4–5 GHz: ≤ 2.5 mm			
		≤ 1.5· $\Delta z$ Zoom (n-1)	
Minimum zoom scan volume	x, y, z	≥30 mm	3–4 GHz: ≥ 28 mm
			4–5 GHz: ≥ 25 mm
			5–6 GHz: ≥ 22 mm

### Note:

1.  $\delta$  is the penetration depth of a plane-wave at normal incidence to the tissue medium; see draft standard IEEE P1528-2011 for details.
2. \* When zoom scan is required and the reported SAR from the area scan based 1 g SAR estimation procedures of KDB 447498 is ≤ 1.4 W/kg, ≤ 8 mm, ≤ 7 mm and ≤ 5 mm zoom scan resolution may be applied, respectively, for 2 GHz to 3GHz, 3 GHz to 4 GHz and 4 GHz to 6 GHz.

### 7.3 Measurement Procedure

The following steps are used for each test position

- a. Establish a call with the maximum output power with a base station simulator. The connection between the mobile and the base station simulator is established via air interface
- b. Measurement of the local E-field value at a fixed location. This value serves as a reference value for calculating a possible power drift.
- c. Measurement of the SAR distribution with a grid of 8 to 16mm \* 8 to 16 mm and a constant distance to the inner surface of the phantom. Since the sensors cannot directly measure at the inner phantom surface, the values between the sensors and the inner phantom surface are extrapolated. With these values the area of the maximum SAR is calculated by an interpolation scheme.
- d. Around this point, a cube of 30 \* 30 \* 30 mm or 32 \* 32 \* 32 mm is assessed by measuring 5 or 8 \* 5 or 8\*4 or 5 mm. With these data, the peak spatial-average SAR value can be calculated.

### 7.4 Area & Zoom Scan Procedure

First Area Scan is used to locate the approximate location(s) of the local peak SAR value(s). The measurement grid within an Area Scan is defined by the grid extent, grid step size and grid offset. Next, in order to determine the EM field distribution in a three-dimensional spatial extension, Zoom Scan is required. The Zoom Scan is performed around the highest E-field value to determine the averaged SAR-distribution over 10 g. Area scan and zoom scan resolution setting follows KDB 865664 D01v01r04 quoted below.

When the 1 g SAR of the highest peak is within 2 dB of the SAR limit, additional zoom scans are required for other peaks within 2 dB of the highest peak that have not been included in any zoom scan to ensure there is no increase in SAR.



## 8 CONDUCTED RF OUTPUT POWER

### 8.1 WIFI

#### 8.1.1 2.4G WIFI (Main Antenna)

Band (GHz)	Mode	Channel	Freq. (MHz)	Conducted Power (dBm)	Tune-up Power Limit (dBm)	SAR Test Require.
2.4 (2.4~2.483)	802.11b	1	2412	<b>16.55</b>	17.00	Yes
		6	2437	16.50	17.00	Yes
		11	2462	16.38	17.00	Yes
	802.11g	1	2412	14.67	15.00	No
		6	2437	14.62	15.00	No
		11	2462	14.51	15.00	No
	802.11n(HT20)	1	2412	12.71	13.00	No
		6	2437	12.73	13.00	No
		11	2462	12.56	13.00	No
	802.11n(HT40)	3	2422	12.39	13.00	No
		6	2437	12.42	13.00	No
		9	2452	12.28	13.00	No
	802.11ax(HE20)	1	2412	12.66	13.00	No
		6	2437	12.68	13.00	No
		11	2462	12.61	13.00	No
	802.11ax(HE40)	3	2422	12.37	13.00	No
		6	2437	12.51	13.00	No
		9	2452	12.31	13.00	No

Note: When multiple channel bandwidth configurations in a frequency band have the same maximum tune-up output power, the test configuration is determined by applying the following steps sequentially.

- 1) The largest channel bandwidth configuration is selected between the multiple configurations in a frequency band with the same maximum tune-up output power.
- 2) When multiple transmission modes (802.11b/g/n/ax) have the same maximum tune-up output power, largest channel bandwidth, lowest order modulation and lowest data rate, the lowest order 802.11 mode is selected; i.e., 802.11b is chosen over 802.11g, and 802.11g & 802.11n chosen over 802.11ax.
- 3) According KDB 247228, when the highest reported SAR for DSSS is adjusted by the ratio of OFDM to DSSS specified maximum output power and the adjusted SAR is  $\leq 1.2$  W/kg, OFDM SAR test is not required.  
Adjusted SAR =  $0.218 * (31.62\text{mW}/50.12\text{mW}) = 0.138$  W/Kg, so 2.4G OFDM SAR test is not required.

## 8.1.2 2.4G WIFI (Aux. Antenna)

Band (GHz)	Mode	Channel	Freq. (MHz)	Conducted Power (dBm)	Tune-up Power Limit (dBm)	SAR Test Require.
2.4 (2.4~2.483)	802.11b	1	2412	<b>16.28</b>	17.00	Yes
		6	2437	16.25	17.00	Yes
		11	2462	16.25	17.00	Yes
	802.11g	1	2412	14.43	15.00	No
		6	2437	14.40	15.00	No
		11	2462	14.49	15.00	No
	802.11n(HT20)	1	2412	12.57	13.00	No
		6	2437	12.54	13.00	No
		11	2462	12.55	13.00	No
	802.11n(HT40)	3	2422	12.17	13.00	No
		6	2437	12.05	13.00	No
		9	2452	12.07	13.00	No
	802.11ax(HE20)	1	2412	12.60	13.00	No
		6	2437	12.58	13.00	No
		11	2462	12.55	13.00	No
	802.11ax(HE40)	3	2422	12.34	13.00	No
		6	2437	12.48	13.00	No
		9	2452	12.47	13.00	No

Note: When multiple channel bandwidth configurations in a frequency band have the same maximum tune-up output power, the test configuration is determined by applying the following steps sequentially.

- 1) The largest channel bandwidth configuration is selected between the multiple configurations in a frequency band with the same maximum tune-up output power.
- 2) When multiple transmission modes (802.11b/g/n/ax) have the same maximum tune-up output power, largest channel bandwidth, lowest order modulation and lowest data rate, the lowest order 802.11 mode is selected; i.e., 802.11b is chosen over 802.11g, and 802.11g & 802.11n chosen over 802.11ax.
- 3) According KDB 247228, when the highest reported SAR for DSSS is adjusted by the ratio of OFDM to DSSS specified maximum output power and the adjusted SAR is  $\leq 1.2$  W/kg, OFDM SAR test is not required.  
Adjusted SAR =  $0.914 * (31.62\text{mW}/50.12\text{mW}) = 0.577$  W/Kg, so 2.4G OFDM SAR test is not required.

## 8.1.3 2.4G WIFI (MIMO-Main Antenna)

Band (GHz)	Mode	Channel	Freq. (MHz)	Conducted Power (dBm)	Tune-up Power Limit (dBm)	SAR Test Require.
2.4 (2.4~2.483)	802.11n(HT20)	1	2412	9.65	10.00	No
		6	2437	9.58	10.00	No
		11	2462	9.55	10.00	No
	802.11n(HT40)	3	2422	9.40	10.00	No
		6	2437	9.44	10.00	No
		9	2452	9.31	10.00	No
	802.11ax(HE20)	1	2412	9.56	10.00	No
		6	2437	9.70	10.00	No
		11	2462	9.60	10.00	No
	802.11ax(HE40)	3	2422	9.50	10.00	No
		6	2437	9.44	10.00	No
		9	2452	9.43	10.00	No

Note: For WiFi SAR testing was performed on single antenna RF power in SISO mode that is larger to the single antenna RF power in MIMO mode, and for RF exposure assessment of MIMO mode simultaneous transmission used more conservative "Max. (main ant) + Max. (aux. ant) " method to determine SAR compliance. When the sum of 1-g SISO transmission SAR measurement is <math><1.60\text{W/kg}</math>, MIMO SAR test is not required.

## 8.1.4 2.4G WIFI (MIMO-Aux. Antenna)

Band (GHz)	Mode	Channel	Freq. (MHz)	Conducted Power (dBm)	Tune-up Power Limit (dBm)	SAR Test Require.
2.4 (2.4~2.483)	802.11n(HT20)	1	2412	9.54	10.00	No
		6	2437	9.51	10.00	No
		11	2462	9.42	10.00	No
	802.11n(HT40)	3	2422	9.13	10.00	No
		6	2437	9.28	10.00	No
		9	2452	9.19	10.00	No
	802.11ax(HE20)	1	2412	9.69	10.00	No
		6	2437	9.71	10.00	No
		11	2462	9.64	10.00	No
	802.11ax(HE40)	3	2422	9.28	10.00	No
		6	2437	9.34	10.00	No
		9	2452	9.43	10.00	No

Note: For WiFi SAR testing was performed on single antenna RF power in SISO mode that is larger to the single antenna RF power in MIMO mode, and for RF exposure assessment of MIMO mode simultaneous transmission used more conservative "Max. (main ant) + Max. (aux. ant) " method to determine SAR compliance. When the sum of 1-g SISO transmission SAR measurement is <math><1.60\text{W/kg}</math>, MIMO SAR test is not required.

## 8.1.5 5G WIFI (Main Antenna)

Band (GHz)	Mode	Channel	Freq. (MHz)	Conducted Power (dBm)	Tune-up Power Limit (dBm)	SAR Test Require.
5.2 (5.15~5.25)	802.11a	36	5180	14.52	15.00	No
		44	5220	14.61	15.00	No
		48	5240	14.66	15.00	No
	802.11n(HT20)	36	5180	12.66	13.00	No
		44	5220	12.43	13.00	No
		48	5240	12.68	13.00	No
	802.11n(HT40)	38	5190	12.46	13.00	No
		46	5230	12.27	13.00	No
	802.11ac(VHT20)	36	5180	12.65	13.00	No
		44	5220	12.47	13.00	No
		48	5240	12.68	13.00	No
	802.11ac(VHT40)	38	5190	12.39	13.00	No
		46	5230	12.40	13.00	No
	802.11ac(VHT80)	42	5210	12.32	13.00	No
	802.11ax(HE20)	36	5180	12.47	13.00	No
		44	5220	12.72	13.00	No
		48	5240	12.75	13.00	No
	802.11ax(HE40)	38	5190	12.40	13.00	No
46		5230	12.47	13.00	No	
802.11ax(HE80)	42	5210	12.27	13.00	No	
5.3 (5.25~5.35)	802.11a	52	5260	14.54	15.00	Yes
		60	5300	<b>14.64</b>	15.00	Yes
		64	5320	14.51	15.00	Yes
	802.11n(HT20)	52	5260	12.74	13.00	No
		60	5300	12.48	13.00	No
		64	5320	12.74	13.00	No
	802.11n(HT40)	54	5270	12.30	13.00	No
		62	5310	12.44	13.00	No
	802.11ac(VHT20)	52	5260	12.55	13.00	No
		60	5300	12.54	13.00	No
		64	5320	12.65	13.00	No
	802.11ac(VHT40)	54	5270	12.38	13.00	No
		62	5310	12.39	13.00	No
	802.11ac(VHT80)	58	5290	12.29	13.00	No
	802.11ax(HE20)	52	5260	12.68	13.00	No
		60	5300	12.53	13.00	No
		64	5320	12.72	13.00	No
	802.11ax(HE40)	54	5270	12.25	13.00	No
62		5310	12.49	13.00	No	

	802.11ax(HE80)	58	5290	12.29	13.00	No
5.6 (5.47~5.725)	802.11a	100	5500	14.50	15.00	Yes
		116	5580	14.58	15.00	Yes
		140	5700	<b>14.64</b>	15.00	Yes
	802.11n(HT20)	100	5500	12.61	13.00	No
		116	5580	12.59	13.00	No
		140	5700	12.68	13.00	No
	802.11n(HT40)	102	5510	12.39	13.00	No
		118	5590	12.49	13.00	No
		134	5670	12.47	13.00	No
	802.11ac(VHT20)	100	5500	12.65	13.00	No
		116	5580	12.51	13.00	No
		140	5700	12.67	13.00	No
	802.11ac(VHT40)	102	5510	12.28	13.00	No
		118	5590	12.38	13.00	No
		134	5670	12.49	13.00	No
	802.11ac(VHT80)	106	5530	12.33	13.00	No
		122	5610	12.22	13.00	No
	802.11ax(HE20)	100	5500	12.72	13.00	No
		116	5580	12.53	13.00	No
		140	5700	12.63	13.00	No
802.11ax(HE40)	102	5510	12.28	13.00	No	
	118	5590	12.44	13.00	No	
	134	5670	12.45	13.00	No	
802.11ax(HE80)	106	5530	12.32	13.00	No	
	122	5610	12.16	13.00	No	
5.8 (5.725~5.85)	802.11a	149	5745	<b>14.66</b>	15.00	Yes
		157	5785	14.55	15.00	Yes
		165	5825	14.55	15.00	Yes
	802.11n(HT20)	149	5745	12.52	13.00	No
		157	5785	12.78	13.00	No
		165	5825	12.73	13.00	No
	802.11n(HT40)	151	5755	12.39	13.00	No
		159	5795	12.31	13.00	No
	802.11ac(VHT20)	149	5745	12.54	13.00	No
		157	5785	12.74	13.00	No
		165	5825	12.67	13.00	No
	802.11ac(VHT40)	151	5755	12.43	13.00	No
		159	5795	12.37	13.00	No
	802.11ac(VHT80)	155	5775	12.20	13.00	No
	802.11ax(HE20)	149	5745	12.60	13.00	No
		157	5785	12.80	13.00	No
		165	5825	12.63	13.00	No

	802.11ax(HE40)	151	5755	12.36	13.00	No
		159	5795	12.42	13.00	No
	802.11ax(HE80)	155	5775	12.27	13.00	No

Note: When the same maximum output power is specified for both bands, begin SAR measurement in U-NII-2A band by applying the OFDM SAR requirements. If the highest reported SAR for a test configuration is  $\leq 1.2$  W/kg, SAR is not required for U-NII-1 band for that configuration (802.11 mode and exposure condition); otherwise, each band is tested independently for SAR.

## 8.1.6 5G WIFI (Aux. Antenna)

Band (GHz)	Mode	Channel	Freq. (MHz)	Conducted Power (dBm)	Tune-up Power Limit (dBm)	SAR Test Require.
5.2 (5.15~5.25)	802.11a	36	5180	14.50	15.00	No
		44	5220	14.41	15.00	No
		48	5240	14.37	15.00	No
	802.11n(HT20)	36	5180	12.68	13.00	No
		44	5220	12.60	13.00	No
		48	5240	12.57	13.00	No
	802.11n(HT40)	38	5190	12.39	13.00	No
		46	5230	12.35	13.00	No
	802.11ac(VHT20)	36	5180	12.50	13.00	No
		44	5220	12.59	13.00	No
		48	5240	12.45	13.00	No
	802.11ac(VHT40)	38	5190	12.27	13.00	No
		46	5230	12.48	13.00	No
	802.11ac(VHT80)	42	5210	12.11	13.00	No
	802.11ax(HE20)	36	5180	12.58	13.00	No
		44	5220	12.53	13.00	No
48		5240	12.45	13.00	No	
802.11ax(HE40)	38	5190	12.30	13.00	No	
	46	5230	12.38	13.00	No	
802.11ax(HE80)	42	5210	12.20	13.00	No	
5.3 (5.25~5.35)	802.11a	52	5260	14.47	15.00	Yes
		60	5300	<b>14.57</b>	15.00	Yes
		64	5320	14.45	15.00	Yes
	802.11n(HT20)	52	5260	12.62	13.00	No
		60	5300	12.64	13.00	No
		64	5320	12.45	13.00	No
	802.11n(HT40)	54	5270	12.24	13.00	No
		62	5310	12.42	13.00	No
	802.11ac(VHT20)	52	5260	12.47	13.00	No
		60	5300	12.57	13.00	No
		64	5320	12.55	13.00	No
	802.11ac(VHT40)	54	5270	12.24	13.00	No
		62	5310	12.34	13.00	No
	802.11ac(VHT80)	58	5290	12.10	13.00	No
	802.11ax(HE20)	52	5260	12.58	13.00	No
		60	5300	12.65	13.00	No
64		5320	12.59	13.00	No	
802.11ax(HE40)	54	5270	12.31	13.00	No	
	62	5310	12.34	13.00	No	



	802.11ax(HE80)	58	5290	12.06	13.00	No
5.6 (5.47~5.725)	802.11a	100	5500	14.56	15.00	Yes
		116	5580	14.40	15.00	Yes
		140	5700	<b>14.64</b>	15.00	Yes
	802.11n(HT20)	100	5500	12.68	13.00	No
		116	5580	12.58	13.00	No
		140	5700	12.60	13.00	No
	802.11n(HT40)	102	5510	12.44	13.00	No
		118	5590	12.39	13.00	No
		134	5670	12.42	13.00	No
	802.11ac(VHT20)	100	5500	12.65	13.00	No
		116	5580	12.43	13.00	No
		140	5700	12.38	13.00	No
	802.11ac(VHT40)	102	5510	12.32	13.00	No
		118	5590	12.24	13.00	No
		134	5670	12.47	13.00	No
	802.11ac(VHT80)	106	5530	12.29	13.00	No
		122	5610	12.21	13.00	No
	802.11ax(HE20)	100	5500	12.65	13.00	No
		116	5580	12.46	13.00	No
		140	5700	12.49	13.00	No
	802.11ax(HE40)	102	5510	12.25	13.00	No
118		5590	12.29	13.00	No	
134		5670	12.37	13.00	No	
802.11ax(HE80)	106	5530	12.17	13.00	No	
	122	5610	12.31	13.00	No	
5.8 (5.725~5.85)	802.11a	149	5745	14.47	15.00	Yes
		157	5785	14.37	15.00	Yes
		165	5825	<b>14.64</b>	15.00	Yes
	802.11n(HT20)	149	5745	12.64	13.00	No
		157	5785	12.69	13.00	No
		165	5825	12.55	13.00	No
	802.11n(HT40)	151	5755	12.44	13.00	No
		159	5795	12.40	13.00	No
	802.11ac(VHT20)	149	5745	12.45	13.00	No
		157	5785	12.65	13.00	No
		165	5825	12.54	13.00	No
	802.11ac(VHT40)	151	5755	12.26	13.00	No
		159	5795	12.20	13.00	No
	802.11ac(VHT80)	155	5775	12.21	13.00	No
	802.11ax(HE20)	149	5745	12.69	13.00	No
		157	5785	12.50	13.00	No
		165	5825	12.47	13.00	No

	802.11ax(HE40)	151	5755	12.46	13.00	No
		159	5795	12.32	13.00	No
	802.11ax(HE80)	155	5775	12.23	13.00	No

Note: When the same maximum output power is specified for both bands, begin SAR measurement in U-NII-2A band by applying the OFDM SAR requirements. If the highest reported SAR for a test configuration is  $\leq 1.2$  W/kg, SAR is not required for U-NII-1 band for that configuration (802.11 mode and exposure condition); otherwise, each band is tested independently for SAR.

## 8.1.7 5G WIFI (MIMO-Main Antenna)

Band (GHz)	Mode	Channel	Freq. (MHz)	Conducted Power (dBm)	Tune-up Power Limit (dBm)	SAR Test Require.
5.2 (5.15~5.25)	802.11n(HT20)	36	5180	9.66	10.00	No
		44	5220	9.63	10.00	No
		48	5240	9.54	10.00	No
	802.11n(HT40)	38	5190	9.42	10.00	No
		46	5230	9.40	10.00	No
	802.11ac(VHT20)	36	5180	9.52	10.00	No
		44	5220	9.56	10.00	No
		48	5240	9.70	10.00	No
	802.11ac(VHT40)	38	5190	9.37	10.00	No
		46	5230	9.34	10.00	No
	802.11ac(VHT80)	42	5210	9.21	10.00	No
	802.11ax(HE20)	36	5180	9.72	10.00	No
		44	5220	9.71	10.00	No
		48	5240	9.77	10.00	No
802.11ax(HE40)	38	5190	9.37	10.00	No	
	46	5230	9.30	10.00	No	
802.11ax(HE80)	42	5210	9.26	10.00	No	
5.3 (5.25~5.35)	802.11n(HT20)	52	5260	9.66	10.00	No
		60	5300	9.69	10.00	No
		64	5320	9.43	10.00	No
	802.11n(HT40)	54	5270	9.40	10.00	No
		62	5310	9.46	10.00	No
	802.11ac(VHT20)	52	5260	9.50	10.00	No
		60	5300	9.71	10.00	No
		64	5320	9.51	10.00	No
	802.11ac(VHT40)	54	5270	9.39	10.00	No
		62	5310	9.23	10.00	No
	802.11ac(VHT80)	58	5290	<b>9.21</b>	10.00	Yes
	802.11ax(HE20)	52	5260	9.58	10.00	No
		60	5300	9.65	10.00	No
		64	5320	9.68	10.00	No
	802.11ax(HE40)	54	5270	9.47	10.00	No
		62	5310	9.43	10.00	No
	802.11ax(HE80)	58	5290	9.23	10.00	No
	5.6 (5.47~5.725)	802.11n(HT20)	100	5500	9.52	10.00
116			5580	9.64	10.00	No
140			5700	9.68	10.00	No
802.11n(HT40)		102	5510	9.34	10.00	No
		118	5590	9.39	10.00	No

		134	5670	9.46	10.00	No
	802.11ac(VHT20)	100	5500	9.41	10.00	No
		116	5580	9.72	10.00	No
		140	5700	9.73	10.00	No
		102	5510	9.40	10.00	No
	802.11ac(VHT40)	118	5590	9.33	10.00	No
		134	5670	9.40	10.00	No
		106	5530	<b>9.28</b>	10.00	Yes
	802.11ac(VHT80)	122	5610	9.11	10.00	Yes
		100	5500	9.48	10.00	No
	802.11ax(HE20)	116	5580	9.65	10.00	No
		140	5700	9.64	10.00	No
		102	5510	9.33	10.00	No
	802.11ax(HE40)	118	5590	9.47	10.00	No
		134	5670	9.38	10.00	No
		106	5530	9.27	10.00	No
	802.11ax(HE80)	122	5610	9.10	10.00	No
		149	5745	9.62	10.00	No
5.8 (5.725~5.85)	802.11n(HT20)	157	5785	9.66	10.00	No
		165	5825	9.59	10.00	No
		151	5755	9.45	10.00	No
	802.11n(HT40)	159	5795	9.30	10.00	No
		149	5745	9.69	10.00	No
	802.11ac(VHT20)	157	5785	9.65	10.00	No
		165	5825	9.71	10.00	No
		151	5755	9.48	10.00	No
	802.11ac(VHT40)	159	5795	9.33	10.00	No
		802.11ac(VHT80)	155	5775	<b>9.34</b>	10.00
	802.11ax(HE20)	149	5745	9.60	10.00	No
		157	5785	9.45	10.00	No
		165	5825	9.64	10.00	No
	802.11ax(HE40)	151	5755	9.45	10.00	No
		159	5795	9.33	10.00	No
	802.11ax(HE80)	155	5775	9.26	10.00	No

Note:1) When the same maximum output power is specified for both bands, begin SAR measurement in U-NII-2A band by applying the OFDM SAR requirements. If the highest reported SAR for a test configuration is  $\leq 1.2$  W/kg, SAR is not required for U-NII-1 band for that configuration (802.11 mode and exposure condition); otherwise, each band is tested independently for SAR.

2) For WiFi SAR testing was performed on single antenna RF power in SISO mode that is larger to the single antenna RF power in MIMO mode, and for RF exposure assessment of MIMO mode simultaneous transmission used more conservative "Max. (main ant) + Max. (aux. ant) " method to determine SAR compliance. The sum of 1-g SISO transmission SAR measurement  $> 1.60$ W/kg, so 5G MIMO SAR test is required.

## 8.1.8 5G WIFI (MIMO-Aux. Antenna)

Band (GHz)	Mode	Channel	Freq. (MHz)	Conducted Power (dBm)	Tune-up Power Limit (dBm)	SAR Test Require.
5.2 (5.15~5.25)	802.11n(HT20)	36	5180	9.66	10.00	No
		44	5220	9.54	10.00	No
		48	5240	9.59	10.00	No
	802.11n(HT40)	38	5190	9.40	10.00	No
		46	5230	9.51	10.00	No
	802.11ac(VHT20)	36	5180	9.59	10.00	No
		44	5220	9.36	10.00	No
		48	5240	9.63	10.00	No
	802.11ac(VHT40)	38	5190	9.28	10.00	No
		46	5230	9.35	10.00	No
	802.11ac(VHT80)	42	5210	9.22	10.00	No
	802.11ax(HE20)	36	5180	9.64	10.00	No
		44	5220	9.54	10.00	No
		48	5240	9.69	10.00	No
802.11ax(HE40)	38	5190	9.55	10.00	No	
	46	5230	9.51	10.00	No	
802.11ax(HE80)	42	5210	9.24	10.00	No	
5.3 (5.25~5.35)	802.11n(HT20)	52	5260	9.55	10.00	No
		60	5300	9.48	10.00	No
		64	5320	9.45	10.00	No
	802.11n(HT40)	54	5270	9.35	10.00	No
		62	5310	9.47	10.00	No
	802.11ac(VHT20)	52	5260	9.47	10.00	No
		60	5300	9.55	10.00	No
		64	5320	9.59	10.00	No
	802.11ac(VHT40)	54	5270	9.43	10.00	No
		62	5310	9.40	10.00	No
	802.11ac(VHT80)	58	5290	<b>9.30</b>	10.00	Yes
	802.11ax(HE20)	52	5260	9.45	10.00	No
		60	5300	9.43	10.00	No
		64	5320	9.58	10.00	No
	802.11ax(HE40)	54	5270	9.47	10.00	No
		62	5310	9.48	10.00	No
802.11ax(HE80)	58	5290	9.32	10.00	No	
5.6 (5.47~5.725)	802.11n(HT20)	100	5500	9.55	10.00	No
		116	5580	9.51	10.00	No
		140	5700	9.65	10.00	No
	802.11n(HT40)	102	5510	9.33	10.00	No
		118	5590	9.33	10.00	No

		134	5670	9.52	10.00	No
	802.11ac(VHT20)	100	5500	9.62	10.00	No
		116	5580	9.57	10.00	No
		140	5700	9.59	10.00	No
		102	5510	9.30	10.00	No
	802.11ac(VHT40)	118	5590	9.45	10.00	No
		134	5670	9.42	10.00	No
		106	5530	9.29	10.00	Yes
	802.11ac(VHT80)	122	5610	<b>9.36</b>	10.00	Yes
		100	5500	9.60	10.00	No
	802.11ax(HE20)	116	5580	9.69	10.00	No
		140	5700	9.64	10.00	No
		102	5510	9.21	10.00	No
	802.11ax(HE40)	118	5590	9.47	10.00	No
		134	5670	9.25	10.00	No
		106	5530	9.26	10.00	No
	802.11ax(HE80)	122	5610	9.34	10.00	No
		149	5745	9.58	10.00	No
5.8 (5.725~5.85)	802.11n(HT20)	157	5785	9.42	10.00	No
		165	5825	9.48	10.00	No
		151	5755	9.37	10.00	No
	802.11n(HT40)	159	5795	9.43	10.00	No
		149	5745	9.61	10.00	No
	802.11ac(VHT20)	157	5785	9.46	10.00	No
		165	5825	9.56	10.00	No
		151	5755	9.35	10.00	No
	802.11ac(VHT40)	159	5795	9.46	10.00	No
		802.11ac(VHT80)	155	5775	<b>9.21</b>	10.00
	802.11ax(HE20)	149	5745	9.72	10.00	No
		157	5785	9.55	10.00	No
		165	5825	9.50	10.00	No
	802.11ax(HE40)	151	5755	9.40	10.00	No
		159	5795	9.51	10.00	No
	802.11ax(HE80)	155	5775	9.26	10.00	No

Note:1) When the same maximum output power is specified for both bands, begin SAR measurement in U-NII-2A band by applying the OFDM SAR requirements. If the highest reported SAR for a test configuration is  $\leq 1.2$  W/kg, SAR is not required for U-NII-1 band for that configuration (802.11 mode and exposure condition); otherwise, each band is tested independently for SAR.

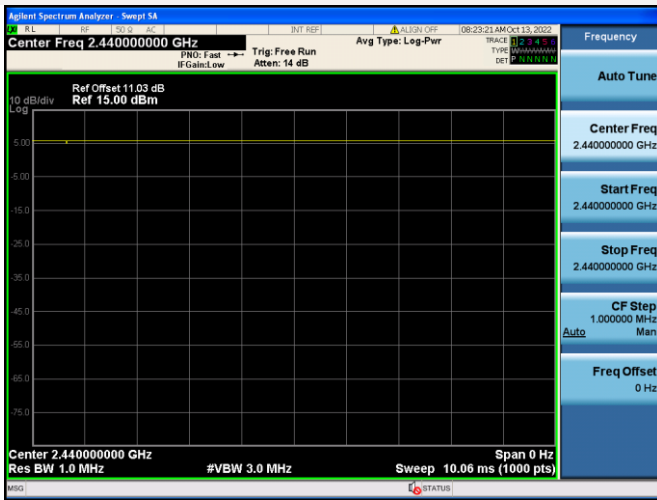
2) For WiFi SAR testing was performed on single antenna RF power in SISO mode that is larger to the single antenna RF power in MIMO mode, and for RF exposure assessment of MIMO mode simultaneous transmission used more conservative "Max. (main ant) + Max. (aux. ant) " method to determine SAR compliance. The sum of 1-g SISO transmission SAR measurement  $> 1.60$ W/kg, so 5G MIMO SAR test is required.

## 8.2 Bluetooth (Antenna Aux)

Mode	GFSK			$\pi/4$ -DQPSK		
Channel	0	39	78	0	39	78
Frequency (MHz)	2402	2441	2480	2402	2441	2480
Conducted Power (dBm)	4.67	5.52	5.32	3.88	4.23	4.61
Tune-Up Limit (dBm)	6.00	6.00	6.00	5.00	5.00	5.00
SAR Test Require	No	No	No	No	No	No
Mode	8-DPSK			/		
Channel	0	39	78	/	/	/
Frequency (MHz)	2402	2441	2480	/	/	/
Conducted Power (dBm)	3.79	4.15	4.50	/	/	/
Tune-Up Limit (dBm)	5.00	5.00	5.00	/	/	/
SAR Test Require	No	No	No	/	/	/
Mode	BLE-1Mbps			BLE-2Mbps		
Channel	0	19	39	0	19	39
Frequency (MHz)	2402	2440	2480	2402	2440	2480
Conducted Power (dBm)	5.86	5.59	<b>6.62</b>	5.51	4.85	6.75
Tune-Up Limit (dBm)	6.00	6.00	7.00	6.00	5.00	7.00
SAR Test Require	Yes	Yes	Yes	No	No	No
<p>Note: Since Bluetooth BLE-1Mbps mode is the maximum output power mode, SAR measurements were performed with test software using BLE-1Mbps modulation, and SAR measurement is not required for the BR and EDR. When the secondary mode is <math>\leq \frac{1}{4}</math> dB higher than the primary mode.</p>						

Duty Cycle

BLE-1Mbps

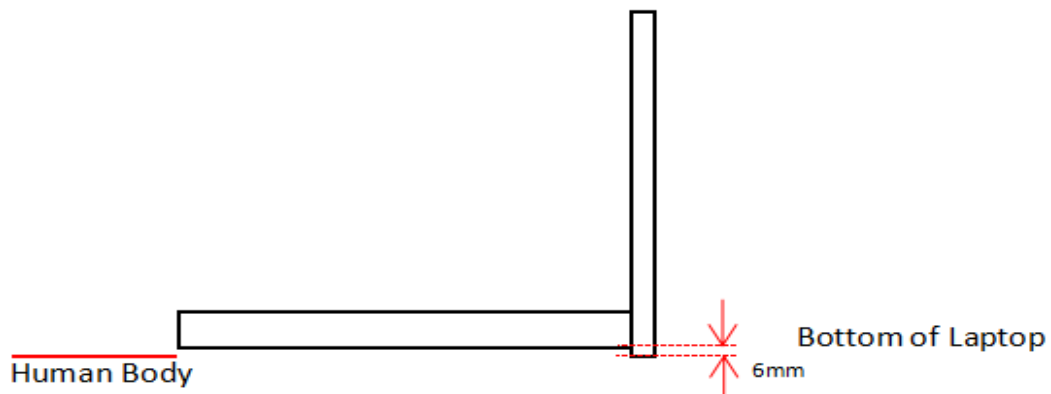
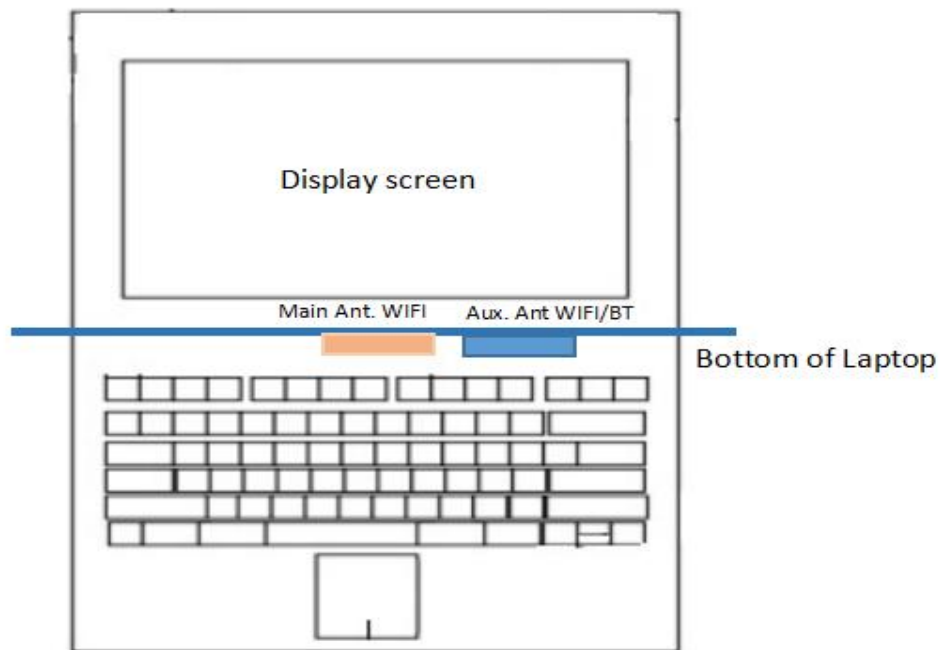


Note: The Bluetooth duty cycle is 100.00% as following figure, according to 2016 Oct. TCB workshop for Bluetooth SAR scaling need further consideration and the maximum duty cycle is 100%, therefore the actual duty cycle will be scaled up to 100% for Bluetooth reported SAR calculation.



## 9 TEST EXCLUSION CONSIDERATION

### 9.1 Laptop Mode antenna location sketch



## 9.2 SAR Test Consideration Table

According with FCC KDB 447498 D04, Appendix B, The SAR-based exemption formula applies for single fixed, mobile, and portable RF sources with available maximum time-averaged power or effective radiated power (ERP), whichever is greater, of less than or equal to the threshold Pth (mW).

This method shall only be used at separation distances from 0.5 cm to 40 cm and at frequencies from 0.3 GHz to 6 GHz (inclusive). The following table shows the power threshold from 5mm to 50mm.

Power Thresholds (mW)					
Frequency (MHz)	At separation distance of $\leq 5$ mm	At separation distance of 10 mm	At separation distance of 15 mm	At separation distance of 20 mm	At separation distance of 25 mm
300	39 mW	65 mW	88 mW	110 mW	129 mW
450	22 mW	44 mW	67 mW	89 mW	112 mW
835	9 mW	25 mW	44 mW	66 mW	90 mW
1900	3 mW	12 mW	26 mW	44 mW	66 mW
2450	3 mW	10 mW	22 mW	38 mW	59 mW
3600	2 mW	8 mW	18 mW	32 mW	49 mW
5800	1 mW	6 mW	14 mW	25 mW	40 mW
Frequency (MHz)	At separation distance of 30 mm	At separation distance of 35 mm	At separation distance of 40 mm	At separation distance of 45 mm	At separation distance of 50 mm
300	148 mW	166 mW	184 mW	201 mW	217 mW
450	135 mW	158 mW	180 mW	203 mW	226 mW
835	116 mW	145 mW	175 mW	207 mW	240 mW
1900	92 mW	122 mW	157 mW	195 mW	236 mW
2450	83 mW	111 mW	143 mW	179 mW	219 mW
3600	71 mW	96 mW	125 mW	158 mW	195 mW
5800	58 mW	80 mW	106 mW	136 mW	169 mW

## 9.2.1 Laptop mode SAR Test Consideration

Main Antenna					
Test Position Configurations	Mode	WLAN	WLAN	WLAN	WLAN
		2.4GHz	5.3GHz	5.6GHz	5.8GHz
Calculated Frequency(MHz)		2462	5320	5710	5825
Bottom Side	Distance to User (mm)	5.00			
	Max Power (dBm)	17.00	15.00	15.00	15.00
	Max. Power (mW)	50.12	31.62	31.62	31.62
	Exclusion Threshold (mW)	2.73	1.47	1.39	1.37
	SAR Test Required	Yes	Yes	Yes	Yes

Aux. Antenna						
Test Position Configurations	Mode	Bluetooth	WLAN	WLAN	WLAN	WLAN
			2.4GHz	5.3GHz	5.6GHz	5.8GHz
Calculated Frequency(MHz)		2480	2462	5320	5710	5825
Bottom Side	Distance to User (mm)	5.00				
	Max Power (dBm)	7.00	17.00	15.00	15.00	15.00
	Max. Power (mW)	5.01	50.12	31.62	31.62	31.62
	Exclusion Threshold (mW)	2.72	2.73	1.47	1.39	1.37
	SAR Test Required	Yes	Yes	Yes	Yes	Yes

MIMO-Main Antenna				
Test Position Configurations	Mode	WLAN	WLAN	WLAN
		5.3GHz	5.6GHz	5.8GHz
Calculated Frequency(MHz)		5320	5710	5825
Bottom Side	Distance to User (mm)	5.00		
	Max Power (dBm)	10.00	10.00	10.00
	Max. Power (mW)	10.00	10.00	10.00
	Exclusion Threshold (mW)	1.47	1.39	1.37
	SAR Test Required	Yes	Yes	Yes

MIMO-Aux. Antenna				
Test Position Configurations	Mode	WLAN	WLAN	WLAN
		5.3GHz	5.6GHz	5.8GHz
Calculated Frequency(MHz)		5320	5710	5825
Bottom Side	Distance to User (mm)	5.00		
	Max Power (dBm)	10.00	10.00	10.00
	Max. Power (mW)	10.00	10.00	10.00
	Exclusion Threshold (mW)	1.47	1.39	1.37
	SAR Test Required	Yes	Yes	Yes

## Note:

1. Maximum power is the source-based time-average power and represents the maximum RF output power including tune-up tolerance among production units
2. Per KDB 447498 D04, for larger devices, the test separation distance of adjacent edge configuration is determined by the closest separation between the antenna and the user.
3. Per KDB 447498 D04, standalone SAR test exclusion threshold is applied; If the distance of the antenna to the user is < 5mm, 5mm is used to determine SAR exclusion threshold
4. Per KDB 447498 D04, for separation distances from 0.5 cm to 40 cm and at frequencies from 0.3 GHz to 6 GHz (inclusive), the threshold Pth (mW) is given by Following:

$$P_{th}(mW) = \begin{cases} ERP_{20cm}(d/20cm)^x & d \leq 20cm \\ ERP_{20cm} & 20cm < d \leq 40cm \end{cases}$$

where

$$x = -\log_{10} \left( \frac{60}{ERP_{20cm} \sqrt{f}} \right)$$

- a. f(GHz) is the RF channel transmit frequency in GHz
- b. d is the separation distance (cm), The result is rounded to one decimal place for comparison
- c.  $ERP_{20cm}$  are determined by:

$$ERP_{20cm}(mW) = f(x) = \begin{cases} 2040f & 0.3GHz \leq f < 1.5GHz \\ 3060 & 1.5GHz \leq f \leq 6GHz \end{cases}$$

5. Per KDB 248227 D01, choose the highest output power channel to test SAR and determine further SAR exclusion.8. For each frequency band, testing at higher data rates and higher order modulations is not required when the maximum average output power for each of these configurations is less than 1/4dB higher than those measured at the lowest data rate
6. Per KDB 248227 D01 SAR is not required for the following 2.4 GHz OFDM conditions.
  - a. When KDB Publication 447498 D04 SAR test exclusion applies to the OFDM configuration.
  - b. When the highest reported SAR for DSSS is adjusted by the ratio of OFDM to DSSS specified maximum output power and the adjusted SAR is  $\leq 1.2$  W/kg.
7. Per KDB 248227 D01 SAR is not required for the following U-NII-1 and U-NII-2A bands conditions.
  - a. When the same maximum output power is specified for both bands, begin SAR measurement in U-NII-2A band by applying the OFDM SAR requirements. If the highest reported SAR for a test configuration is  $\leq 1.2$  W/kg, SAR is not required for U-NII-1 band for that configuration (802.11 mode and exposure condition); otherwise, each band is tested independently for SAR.
  - b. When different maximum output power is specified for the bands, begin SAR measurement in the band with higher specified maximum output power. The highest reported SAR for the tested configuration is adjusted by the ratio of lower to higher specified maximum output power for the two bands. When the adjusted SAR is  $\leq 1.2$  W/kg, SAR is not required for the band with lower maximum output power in that test configuration; otherwise, each band is tested independently for SAR.

# 10 TEST RESULT

## 10.1 Bluetooth

Mode	Antenna	Test Mode	Position	Dist. (mm)	Ch.	Freq. (MHz)	Power Drift (dB)	1g Meas SAR (W/kg)	Meas. Power (dBm)	Max. tune-up power (dBm)	Scaling Factor	Duty cycle (%)	Duty Factor	1g Scaled SAR (W/kg)	Meas. No.
<b>Body</b>															
BLE-1M	Aux.	Laptop	Bottom Side	0	39	2480	-0.11	0.038	6.62	7.00	1.091	100.00	1.000	<b>0.041</b>	1#
Note: Refer to ANNEX C for the detailed test data for each test configuration.															

## 10.2 WIFI 2.4GHZ

Mode	Antenna	Test Mode	Position	Dist. (mm)	Ch.	Freq. (MHz)	Power Drift (dB)	1g Meas SAR (W/kg)	Meas. Power (dBm)	Max. tune-up power (dBm)	Scaling Factor	Duty cycle (%)	Duty Factor	1g Scaled SAR (W/kg)	Meas. No.
<b>Body</b>															
802.11b	Main	Laptop	Bottom Side	0	1	2412	-0.02	0.195	16.55	17.00	1.109	99.31	1.007	<b>0.218</b>	2#
802.11b	Aux.	Laptop	Bottom Side	0	1	2412	-0.02	0.769	16.28	17.00	1.180	99.31	1.007	<b>0.914</b>	3#
				0	6	2437	0.06	0.755	16.25	17.00	1.189	99.31	1.007	0.904	/
				0	11	2462	-0.12	0.756	16.25	17.00	1.189	99.31	1.007	0.905	/
Note: Refer to ANNEX C for the detailed test data for each test configuration.															

### 10.3WIFI 5GHZ

Mode	Antenna	Test Mode	Position	Dist. (mm)	Ch.	Freq. (MHz)	Power Drift (dB)	1g Meas SAR (W/kg)	Meas. Power (dBm)	Max. tune-up power (dBm)	Scaling Factor	Duty cycle (%)	Duty Factor	1g Scaled SAR (W/kg)	Meas. No.
<b>5.3 G-Body</b>															
802.11 a	Main	Laptop	Bottom Side	0	52	5260	0.06	0.687	14.54	15.00	1.112	96.38	1.038	0.793	/
				0	60	5300	-0.01	0.710	14.64	15.00	1.086	96.38	1.038	<b>0.800</b>	4#
				0	64	5320	-0.15	0.664	14.51	15.00	1.119	96.38	1.038	0.771	/
802.11 a	Aux.	Laptop	Bottom Side	0	52	5260	-0.04	0.897	14.47	15.00	1.130	96.38	1.038	1.052	/
				0	60	5300	-0.03	0.934	14.57	15.00	1.104	96.38	1.038	<b>1.070</b>	5#
				0	64	5320	0.00	0.875	14.45	15.00	1.135	96.38	1.038	1.031	/
802.11 ac (VHT80)	MIMO-Main	Laptop	Bottom Side	0	58	5290	0.18	0.237	9.21	10.00	1.199	83.90	1.192	<b>0.339</b>	6#
802.11 ac (VHT80)	MIMO-Aux.	Laptop	Bottom Side	0	58	5290	-0.02	0.300	9.30	10.00	1.175	83.90	1.192	<b>0.420</b>	7#
<b>5.6 G-Body</b>															
802.11 a	Main	Laptop	Bottom Side	0	100	5500	-0.12	0.563	14.50	15.00	1.122	96.38	1.038	0.656	/
				0	116	5580	0.05	0.672	14.58	15.00	1.102	96.38	1.038	0.769	/
				0	140	5700	-0.07	0.804	14.64	15.00	1.086	96.38	1.038	<b>0.906</b>	8#
802.11 a	Aux.	Laptop	Bottom Side	0	140	5700	0.03	0.562	14.64	15.00	1.086	96.38	1.038	<b>0.634</b>	9#
802.11 ac (VHT80)	MIMO-Main	Laptop	Bottom Side	0	106	5530	-0.07	0.162	9.28	10.00	1.180	83.90	1.192	<b>0.228</b>	10#
802.11 ac (VHT80)	MIMO-Aux.	Laptop	Bottom Side	0	122	5610	0.05	0.151	9.36	10.00	1.159	83.90	1.192	<b>0.209</b>	11#
<b>5.8 G-Body</b>															
802.11 a	Main	Laptop	Bottom Side	0	149	5745	0.01	0.829	14.66	15.00	1.081	96.38	1.038	<b>0.930</b>	12#
				0	157	5785	0.05	0.802	14.55	15.00	1.109	96.38	1.038	0.923	/
				0	165	5825	0.13	0.803	14.55	15.00	1.109	96.38	1.038	0.924	/
802.11 a	Aux.	Laptop	Bottom Side	0	165	5825	-0.03	0.709	14.64	15.00	1.086	96.38	1.038	<b>0.799</b>	13#
802.11 ac (VHT80)	MIMO-Main	Laptop	Bottom Side	0	155	5775	-0.06	0.203	9.26	10.00	1.186	83.90	1.192	<b>0.287</b>	14#
802.11 ac (VHT80)	MIMO-Aux.	Laptop	Bottom Side	0	155	5775	-0.07	0.194	9.26	10.00	1.186	83.90	1.192	<b>0.274</b>	15#
Note: Refer to ANNEX C for the detailed test data for each test configuration.															

## 11 SAR Measurement Variability

According to KDB 865664 D01, SAR measurement variability was assessed for each frequency band, which is determined by the SAR probe calibration point and tissue-equivalent medium used for the device measurements. When both head and body tissue-equivalent media are required for SAR measurements in a frequency band, the variability measurement procedures should be applied to the tissue medium with the highest measured SAR, using the highest measured SAR configuration for that tissue-equivalent medium. Alternatively, if the highest measured SAR for both head and body tissue-equivalent media are  $\leq 1.45$  W/kg and the ratio of these highest SAR values, i.e., largest divided by smallest value, is  $\leq 1.10$ , the highest SAR configuration for either head or body tissue-equivalent medium may be used to perform the repeated measurement. These additional measurements are repeated after the completion of all measurements requiring the same head or body tissue-equivalent medium in a frequency band. The test device should be returned to ambient conditions (normal room temperature) with the battery fully charged before it is re-mounted on the device holder for the repeated measurement(s) to minimize any unexpected variations in the repeated results.

SAR repeated measurement procedure:

1. When the highest measured SAR is  $< 0.80$  W/kg, repeated measurement is not required.
2. When the highest measured SAR is  $\geq 0.80$  W/kg, repeat that measurement once.
3. If the ratio of largest to smallest SAR for the original and first repeated measurements is  $> 1.20$ , or when the original or repeated measurement is  $\geq 1.45$  W/kg, perform a second repeated measurement.
4. If the ratio of largest to smallest SAR for the original, first and second repeated measurements is  $> 1.20$ , and the original, first or second repeated measurement is  $\geq 1.5$  W/kg, perform a third repeated measurement.

Frequency Band (MHz)	Wireless Band	Antenna	RF Exposure Conditions	Test Position	Highest Measured SAR (W/kg)	Repeated SAR (Yes/No)	Highest Measured SAR (W/kg)	Largest to Smallest SAR Ratio
5260	802.11a	Aux.	Body	Bottom Side	0.897	Yes	0.855	1.05
5300	802.11a	Aux.	Body	Bottom Side	0.934	Yes	0.907	1.03
5320	802.11a	Aux.	Body	Bottom Side	0.875	Yes	0.857	1.02
5700	802.11a	Main	Body	Bottom Side	0.804	Yes	0.789	1.02
5745	802.11a	Main	Body	Bottom Side	0.829	Yes	0.822	1.01
5785	802.11a	Main	Body	Bottom Side	0.802	Yes	0.783	1.02
5825	802.11a	Main	Body	Bottom Side	0.803	Yes	0.769	1.04

Note: The ratio of largest to smallest SAR for the original and first repeated measurements is  $< 1.20$ , the second repeated measurement is not required.

## 12 SIMULTANEOUS TRANSMISSION

Simultaneous transmission SAR test exclusion is determined for each operating configuration and exposure condition according to the reported standalone SAR of each applicable simultaneous transmitting antenna. When the sum of SAR 1g of all simultaneously transmitting antennas in an operating mode and exposure condition combination is within the SAR limit (SAR 1g 1.6 W/kg), the simultaneous transmission SAR is not required. When the sum of SAR 1g is greater than the SAR limit (SAR 1g 1.6 W/kg), SAR test exclusion is determined by the SAR to Peak Location Ratio (SPLSR).

According KDB 447498 D04, simultaneous transmission:

- a)  $SPLSR = (SAR1 + SAR2)^{1.5} / R_i$  (min. separation distance, mm), and the peak separation distance is determined from the square root of  $[(x1-x2)^2 + (y1-y2)^2 + (z1-z2)^2]$ , where (x1, y1, z1) and (x2, y2, z2) are the coordinates of the extrapolated peak SAR locations in the zoom scan.  
SAR1 is the highest reported or estimated SAR for the first of a pair of simultaneous transmitting antennas, in a specific test operating mode and exposure condition.  
SAR2 is the highest reported or estimated SAR for the second of a pair of simultaneous transmitting antennas, in a specific test operating mode and exposure condition as the first.
- b) If  $SPLSR \leq 0.04$ , simultaneously transmission SAR measurement is not necessary.
- c) Simultaneously transmission SAR measurement, and the reported multi-band SAR < 1.6W/kg.

### 12.1 Simultaneous Transmission Mode Considerations

No.	Simultaneous Tx Combination	Body
1	Bluetooth(Antenna Aux.) + WLAN 2.4GHz (Antenna Main)	Yes
2	WLAN 2.4GHz (Antenna Main) + WLAN 2.4GHz (Antenna Aux.)	Yes
3	Bluetooth(Antenna Aux.) + WLAN 5GHz (Antenna Auxiliary)	Yes
4	Bluetooth(Antenna Aux.) + WLAN 5GHz (Antenna Main)	Yes
5	Bluetooth(Antenna Aux.) + WLAN 5GHz (Antenna Aux.) + WLAN 5GHz (Antenna Main)	Yes

Note:

- The simultaneous transmission combinations of the more Antennas contain combinations of less Antennas, so only the worst simultaneous transmission combinations was shown in this table.



## 12.2 Sum SAR of Simultaneous Transmission

### 12.2.1 Body Simultaneous Transmission SAR Evaluation for WLAN Antenna with Bluetooth

State	Position	Stand alone SAR						
		1		2		3		
		Bluetooth		WLAN 2.4GHz (Antenna Main)		WLAN 2.4GHz (Antenna Auxiliary)		
Body	Bottom Side 0mm	0.041		0.218		0.914		
		4						
		WLAN 5.3GHz (Antenna Main)		WLAN 5.6GHz (Antenna Main)		WLAN 5.8GHz (Antenna Main)	MAX. WLAN 5GHz (Antenna Main)	
		0.800		0.906		0.930	0.930	
		5						
		WLAN 5.3GHz (Antenna Aux.)		WLAN 5.6GHz (Antenna Aux.)		WLAN 5.8GHz (Antenna Aux.)	MAX. WLAN 5GHz (Antenna Aux.)	
		1.070		0.634		0.799	1.070	
		MIMO SAR						
		6						
		WLAN 5.3GHz (Antenna Main)		WLAN 5.6GHz (Antenna Main)		WLAN 5.8GHz (Antenna Main)	MAX. WLAN 5GHz (Antenna Main)	
		0.339		0.228		0.287	0.339	
		7						
		WLAN 5.3GHz (Antenna Aux.)		WLAN 5.6GHz (Antenna Aux.)		WLAN 5.8GHz (Antenna Aux.)	MAX. WLAN 5GHz (Antenna Aux.)	
		0.420		0.209		0.274	0.420	
		SUM SAR						
		Sum SAR (1+2)		Sum SAR (2+3)		Sum SAR (1+4)	Sum SAR (1+5)	Sum SAR (1+6+7)
		0.259		1.132		0.971	1.111	0.800

**Note:**

1: The highest Summed 1g SAR is 1.132W/Kg < 1.6 W/kg, so Simultaneous Transmission SAR test is not required.

## 13 TEST EQUIPMENTS LIST

Description	Manufacturer	Model	Serial No./Version	Cal. Date	Cal. Due
PC	Dell	N/A	N/A	N/A	N/A
Test Software	Speag	DASY6	16.0.0.116	N/A	N/A
2450MHz Validation Dipole	Speag	D2450V2	SN: 952	2021/05/19	2024/05/18
5GHz Validation Dipole	Speag	D5GHzV2	SN: 1200	2021/05/18	2024/05/17
E-Field Probe	Speag	EX3DV4	SN: 7607	2022/07/04	2023/07/03
Data Acquisition Electronicsr	Speag	DAE4	SN: 878	2022/06/13	2023/06/12
Signal Generator	R&S	SMB100A	182396	2021/12/20	2022/12/19
Power Meter	R&S	NRVD-B2	7250BJ-0112/2011	2022/09/06	2023/09/05
Power Sensor	R&S	NRV-Z4	100381	2022/09/06	2023/09/05
Power Sensor	R&S	NRV-Z2	100211	2022/09/06	2023/09/05
Network Analyzer	Agilent	E5071C	MY46103472	2021/12/29	2022/12/28
Thermometer	Elitech	RC-4HC	EF720B004811	2021/12/01	2022/11/30
Thermometer	Elitech	RC-4HC	EF720B004817	2021/12/01	2022/11/30
Power Amplifier	SATIMO	6552B	22374	N/A	N/A
Dielectric Probe Kit	Speag	DAK3.5	SN: 1312	N/A	N/A
Phantom	Speag	ELI4	SN: 1012	N/A	N/A
Attenuator	COM-MW	ZA-S1-31	1305003187	N/A	N/A
Directional coupler	AA-MCS	AAMCS-UDC	000272	N/A	N/A

Note: For dipole antennas, BALUN has adopted 3 years as calibration intervals, and on annual basis, every measurement dipole has been evaluated and is in compliance with the following criteria:

1. There is no physical damage on the dipole;
2. System validation with specific dipole is within 10% of calibrated value;
3. Return-loss in within 20% of calibrated measurement.
4. Impedance (real or imaginary parts) in within 5 Ohms of calibrated measurement.

## ANNEX A SIMULATING LIQUID VERIFICATION RESULT

The dielectric parameters of the liquids were verified prior to the SAR evaluation using a DAK3.5 Dielectric Probe Kit.

Head Liquid

Date	Liquid Type	Fre. (MHz)	Temp. (°C)	Meas. Conductivity ( $\sigma$ ) (S/m)	Meas. Permittivity ( $\epsilon$ )	Target Conductivity ( $\sigma$ ) (S/m)	Target Permittivity ( $\epsilon$ )	Conductivity Tolerance (%)	Permittivity Tolerance (%)
2022.10.14	Head	2450	21.2	1.77	38.21	1.80	39.20	-1.67	-2.53
2022.10.15	Head	5250	21.3	4.77	36.33	4.71	35.93	1.27	1.11
2022.10.15	Head	5600	21.3	4.85	36.18	5.07	35.53	-4.34	1.83
2022.10.15	Head	5750	21.3	5.23	36.04	5.22	35.36	0.19	1.92

Note: The tolerance limit of Conductivity and Permittivity is  $\pm 5\%$ .

## ANNEX B SYSTEM CHECK RESULT

Comparing to the original SAR value provided by SPEAG, the validation data should be within its specification of 10 % (for 1 g).

Head liquid 1g

Date	Liquid Type	Freq. (MHz)	Power (mW)	Measured SAR (W/kg)	Normalized SAR (W/kg)	Dipole SAR (W/kg)	Tolerance (%)
2022.10.14	Head	2450	100	5.43	54.30	53.00	2.45
2022.10.15	Head	5250	100	7.92	79.20	77.80	1.80
2022.10.15	Head	5600	100	8.33	83.30	81.20	2.59
2022.10.15	Head	5750	100	7.86	78.60	77.20	1.81

Note: The tolerance limit of System validation  $\pm 10\%$ .

# System Performance Check Data (2450MHz)

### Device under Test Properties

Model, Manufacturer	Dimensions [mm]	IMEI	DUT Type
D2450V2, SPEAG	40.0 x 8.0 x 8.0		Dipole

### Exposure Conditions

Phantom, Test Section, TSL	Position, Distance [mm]	Band	Group, UID	Frequency [MHz], Channel Number	Conversion Factor	TSL Conductivity [S/m]	TSL Permittivity	Ambient Temperature	Liquid Temperature
Flat, HSL		Validation band	CW, 0--	2450.0, 2450	7.79	1.768	38.214	22.6°C	21.2°C

### Hardware Setup

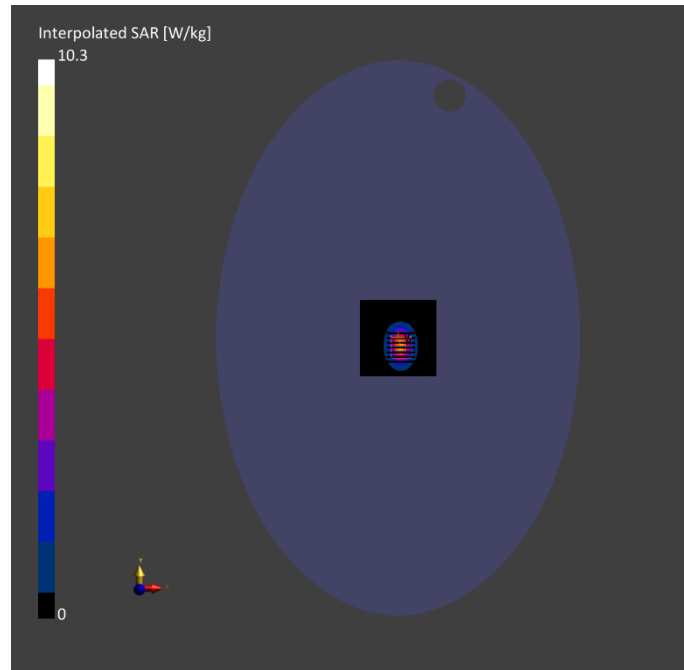
Phantom	TSL, Measured Date	Probe, Calibration Date	DAE, Calibration Date
ELI4 (20deg probe tilt) - 1012	HBBL-600-10000 2022-10-14	EX3DV4 - SN7607, 2022-07-04	DAE4 Sn878, 2022-06-13

### Scan Setup

	Area Scan	Zoom Scan
Grid Extents [mm]	80.0 x 80.0	30.0 x 30.0 x 30.0
Grid Steps [mm]	8.0 x 10.0	5.0 x 5.0 x 1.5
Sensor Surface [mm]	3.0	1.4
Graded Grid	Yes	Yes
Grading Ratio	1.5	1.5
MAIA	N/A	N/A
Surface Detection	All points	All points
Scan Method	Measured	Measured

### Measurement Results

	Area Scan	Zoom Scan
Date	2022-10-14	2022-10-14
psSAR1g [W/kg]	5.09	5.10
psSAR10g [W/kg]	2.40	2.41
Power Drift [dB]	-0.14	0.01
Power Scaling	Disabled	Disabled
Scaling Factor		
[dB]		
TSL Correction	No correction	No correction
M2/M1 [%]		80.6
Dist 3dB Peak [mm]		9.0



# System Performance Check Data (5250MHz)

### Device under Test Properties

Model, Manufacturer	Dimensions [mm]	IMEI	DUT Type
D5GHzV2, SPEAG	10.0 x 10.0 x 3.0		Dipole

### Exposure Conditions

Phantom, Test Section, TSL	Position, Distance [mm]	Band	Group, UID	Frequency [MHz], Channel Number	Conversion Factor	TSL Conductivity [S/m]	TSL Permittivity	Ambient Temperature	Liquid Temperature
Flat, HSL		Validation band	CW, 0--	5250.0, 5250	5.45	4.772	36.325	22.6°C	21.3°C

### Hardware Setup

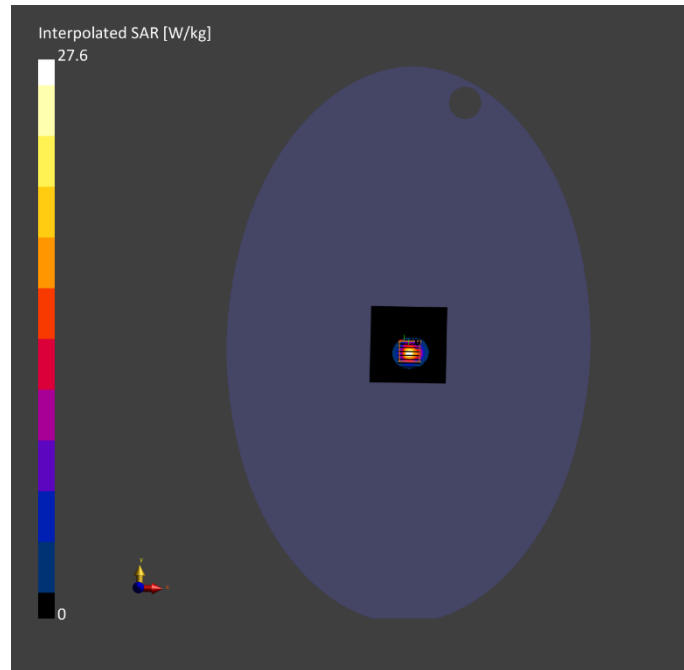
Phantom	TSL, Measured Date	Probe, Calibration Date	DAE, Calibration Date
ELI4 (20deg probe tilt) - 1012	HBBL-600-10000 2022-10-15	EX3DV4 - SN7607, 2022-07-04	DAE4 Sn878, 2022-06-13

### Scan Setup

	Area Scan	Zoom Scan
Grid Extents [mm]	80.0 x 80.0	22.0 x 22.0 x 22.0
Grid Steps [mm]	10.0 x 10.0	4.0 x 4.0 x 1.4
Sensor Surface [mm]	3.0	1.4
Graded Grid	Yes	Yes
Grading Ratio	1.5	1.4
MAIA	N/A	N/A
Surface Detection	All points	All points
Scan Method	Measured	Measured

### Measurement Results

	Area Scan	Zoom Scan
Date	2022-10-15	2022-10-15
psSAR1g [W/kg]	6.59	7.24
psSAR10g [W/kg]	1.97	2.10
Power Drift [dB]	-0.14	0.01
Power Scaling	Disabled	Disabled
Scaling Factor		
[dB]		
TSL Correction	No correction	No correction
M2/M1 [%]		65.1
Dist 3dB Peak [mm]		7.4





# System Performance Check Data (5600MHz)

### Device under Test Properties

Model, Manufacturer	Dimensions [mm]	IMEI	DUT Type
D5GHzV2, SPEAG	10.0 x 10.0 x 3.0		Dipole

### Exposure Conditions

Phantom, Test Section, TSL	Position, Distance [mm]	Band	Group, UID	Frequency [MHz], Channel Number	Conversion Factor	TSL Conductivity [S/m]	TSL Permittivity	Ambient Temperature	Liquid Temperature
Flat, HSL		Validation band	CW, 0--	5600.0, 5600	4.9	4.853	36.179	22.6°C	21.3°C

### Hardware Setup

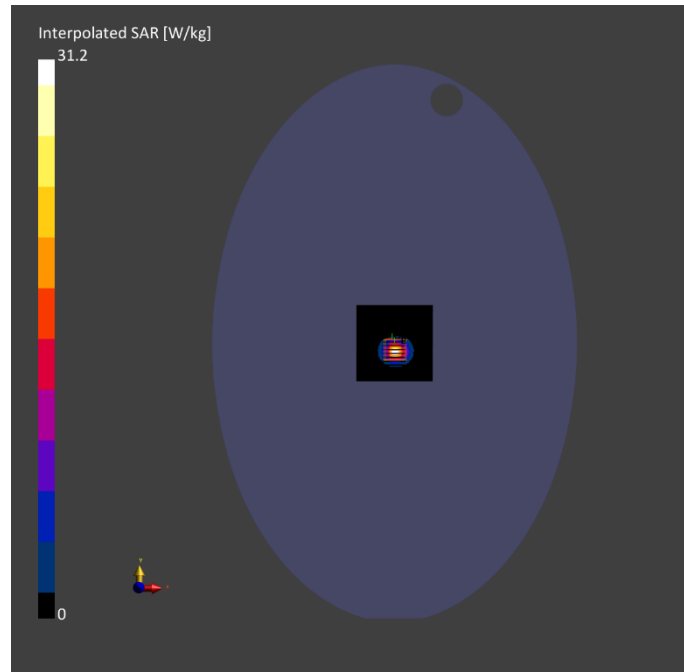
Phantom	TSL, Measured Date	Probe, Calibration Date	DAE, Calibration Date
ELI4 (20deg probe tilt) - 1012	HBBL-600-10000 2022-10-15	EX3DV4 - SN7607, 2022-07-04	DAE4 Sn878, 2022-06-13

### Scan Setup

	Area Scan	Zoom Scan
Grid Extents [mm]	80.0 x 80.0	22.0 x 22.0 x 22.0
Grid Steps [mm]	10.0 x 10.0	4.0 x 4.0 x 1.4
Sensor Surface [mm]	3.0	1.4
Graded Grid	Yes	Yes
Grading Ratio	1.5	1.4
MAIA	N/A	N/A
Surface Detection	All points	All points
Scan Method	Measured	Measured

### Measurement Results

	Area Scan	Zoom Scan
Date	2022-10-15	2022-10-15
psSAR1g [W/kg]	6.99	7.65
psSAR10g [W/kg]	2.03	2.18
Power Drift [dB]	-0.13	0.02
Power Scaling	Disabled	Disabled
Scaling Factor		
[dB]		
TSL Correction	No correction	No correction
M2/M1 [%]		62.5
Dist 3dB Peak [mm]		7.5



# System Performance Check Data (5750MHz)

### Device under Test Properties

Model, Manufacturer	Dimensions [mm]	IMEI	DUT Type
D5GHzV2, SPEAG	10.0 x 10.0 x 3.0		Dipole

### Exposure Conditions

Phantom, Test Section, TSL	Position, Distance [mm]	Band	Group, UID	Frequency [MHz], Channel Number	Conversion Factor	TSL Conductivity [S/m]	TSL Permittivity	Ambient Temperature	Liquid Temperature
Flat, HSL		Validation band	CW, 0--	5750.0, 5750	5.0	5.234	36.036	22.6°C	21.3°C

### Hardware Setup

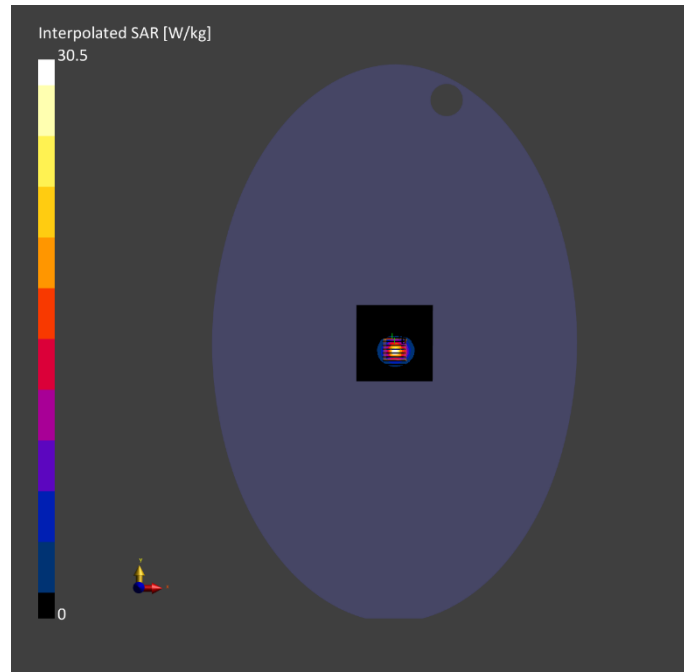
Phantom	TSL, Measured Date	Probe, Calibration Date	DAE, Calibration Date
ELI4 (20deg probe tilt) - 1012	HBBL-600-10000 2022-10-15	EX3DV4 - SN7607, 2022-07-04	DAE4 Sn878, 2022-06-13

### Scan Setup

	Area Scan	Zoom Scan
Grid Extents [mm]	80.0 x 80.0	22.0 x 22.0 x 22.0
Grid Steps [mm]	10.0 x 10.0	4.0 x 4.0 x 1.4
Sensor Surface [mm]	3.0	1.4
Graded Grid	Yes	Yes
Grading Ratio	1.5	1.4
MAIA	N/A	N/A
Surface Detection	All points	All points
Scan Method	Measured	Measured

### Measurement Results

	Area Scan	Zoom Scan
Date	2022-10-15	2022-10-15
psSAR1g [W/kg]	6.56	7.26
psSAR10g [W/kg]	1.93	2.07
Power Drift [dB]	-0.17	0.02
Power Scaling	Disabled	Disabled
Scaling Factor		
[dB]		
TSL Correction	No correction	No correction
M2/M1 [%]		61.5
Dist 3dB Peak [mm]		7.9



## ANNEX C TEST DATA

### Meas.1 Body Plane with Bottom Side on Ch39 in BLE-1M Mode with Antenna Aux.

#### Device under Test Properties

Model, Manufacturer	Dimensions [mm]	IMEI	DUT Type
VWNR71529	359.0 x 240.0 x 6.0		Laptop

#### Exposure Conditions

Phantom Section, TSL	Position, Test Distance [mm]	Band	Group, UID	Frequency [MHz], Channel Number	Conversion Factor	TSL Conductivity [S/m]	TSL Permittivity	Ambient Temperature	Liquid Temperature
Flat, HSL	BOTTOM, 0.00	ISM, 2.4 GHz Band	Bluetooth, 10670-AAA	2480.0, 39	7.79	1.804	37.757	22.6°C	21.2°C

#### Hardware Setup

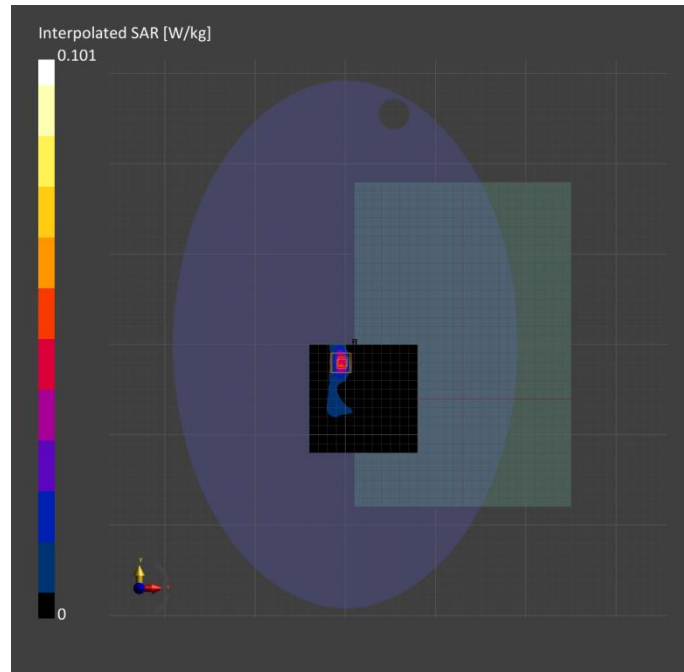
Phantom	TSL, Measured Date	Probe, Calibration Date	DAE, Calibration Date
ELI4 (20deg probe tilt) - 1012	HBBL-600-10000 2022-10-14	EX3DV4 - SN7607, 2022-07-04	DAE4 Sn878, 2022-06-13

#### Scan Setup

	Area Scan	Zoom Scan
Grid Extents [mm]	120.0 x 120.0	30.0 x 30.0 x 30.0
Grid Steps [mm]	12.0 x 12.0	5.0 x 5.0 x 5.0
Sensor Surface [mm]	3.0	1.4
Graded Grid	Yes	Yes
Grading Ratio	1.5	1.5
MAIA	Y	Y
Surface Detection	VMS + 6p	VMS + 6p
Scan Method	Measured	Measured

#### Measurement Results

	Area Scan	Zoom Scan
Date	2022-10-14	2022-10-14
psSAR1g [W/kg]	0.037	0.038
psSAR10g [W/kg]	0.015	0.013
Power Drift [dB]	-0.46	-0.11
Power Scaling	Disabled	Disabled
Scaling Factor		
[dB]		
TSL Correction	No correction	No correction
M2/M1 [%]		40.9
Dist 3dB Peak [mm]		> 15.0



## Meas.2 Body Plane with Bottom Side on Ch1 in IEEE802.11 b Mode with Antenna Main

### Device under Test Properties

Model, Manufacturer	Dimensions [mm]	IMEI	DUT Type
VWNR71529	359.0 x 240.0 x 6.0		Laptop

### Exposure Conditions

Phantom Section, TSL	Position, Test Distance [mm]	Band	Group, UID	Frequency [MHz], Channel Number	Conversion Factor	TSL Conductivity [S/m]	TSL Permittivity	Ambient Temperature	Liquid Temperature
Flat, HSL	BOTTOM, 0.00	WLAN, 2.4GHz	WLAN, 10315-AAB	2412.0, 1	7.79	1.728	38.522	22.6°C	21.2°C

### Hardware Setup

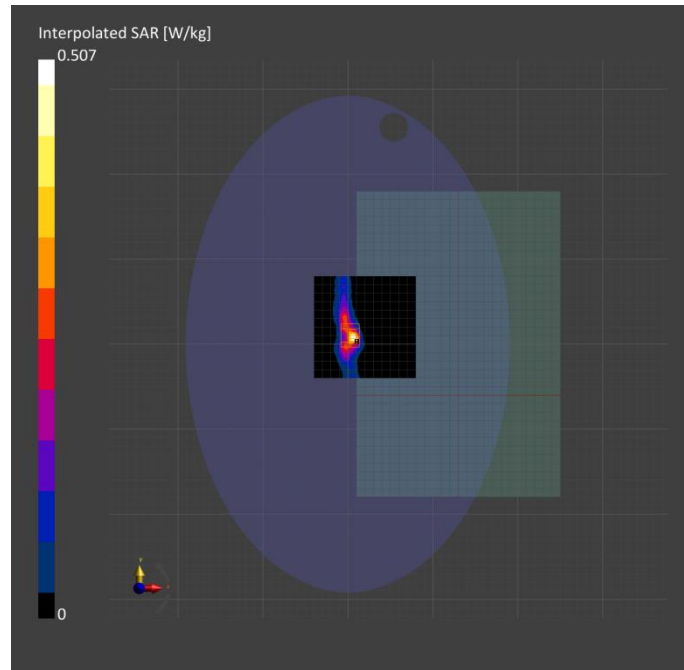
Phantom	TSL, Measured Date	Probe, Calibration Date	DAE, Calibration Date
ELI4 (20deg probe tilt) - 1012	HBBL-600-10000 2022-10-14	EX3DV4 - SN7607, 2022-07-04	DAE4 Sn878, 2022-06-13

### Scan Setup

	Area Scan	Zoom Scan
Grid Extents [mm]	120.0 x 120.0	30.0 x 30.0 x 30.0
Grid Steps [mm]	12.0 x 12.0	5.0 x 5.0 x 5.0
Sensor Surface [mm]	3.0	1.4
Graded Grid	Yes	Yes
Grading Ratio	1.5	1.5
MAIA	Y	N/A
Surface Detection	All points	All points
Scan Method	Measured	Measured

### Measurement Results

	Area Scan	Zoom Scan
Date	2022-10-14	2022-10-14
psSAR1g [W/kg]	0.161	0.195
psSAR10g [W/kg]	0.068	0.071
Power Drift [dB]	-0.03	0.02
Power Scaling	Disabled	Disabled
Scaling Factor [dB]		
TSL Correction	No correction	No correction
M2/M1 [%]		35.0
Dist 3dB Peak [mm]		5.0





## Meas.3 Body Plane with Bottom Side on Ch1 in IEEE802.11 b Mode with Antenna Aux.

### Device under Test Properties

Model, Manufacturer	Dimensions [mm]	IMEI	DUT Type
VWNR71529	359.0 x 240.0 x 6.0		Laptop

### Exposure Conditions

Phantom Section, TSL	Position, Test Distance [mm]	Band	Group, UID	Frequency [MHz], Channel Number	Conversion Factor	TSL Conductivity [S/m]	TSL Permittivity	Ambient Temperature	Liquid Temperature
Flat, HSL	BOTTOM, 0.00	WLAN, 2.4GHz	WLAN, 10315-AAB	2412.0, 1	7.79	1.728	38.522	22.6°C	21.2°C

### Hardware Setup

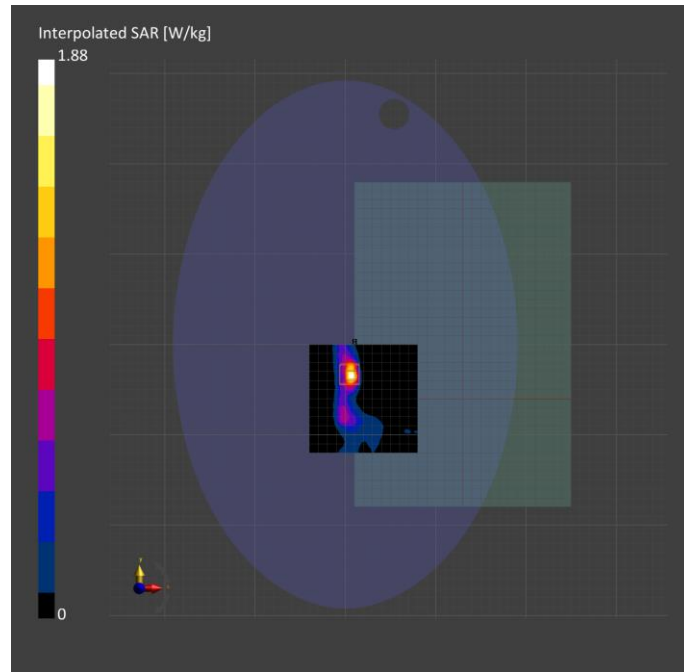
Phantom	TSL, Measured Date	Probe, Calibration Date	DAE, Calibration Date
ELI4 (20deg probe tilt) - 1012	HBBL-600-10000 2022-10-14	EX3DV4 - SN7607, 2022-07-04	DAE4 Sn878, 2022-06-13

### Scan Setup

	Area Scan	Zoom Scan
Grid Extents [mm]	120.0 x 120.0	30.0 x 30.0 x 30.0
Grid Steps [mm]	12.0 x 12.0	5.0 x 5.0 x 5.0
Sensor Surface [mm]	3.0	1.4
Graded Grid	Yes	Yes
Grading Ratio	1.5	1.5
MAIA	N/A	N/A
Surface Detection	All points	All points
Scan Method	Measured	Measured

### Measurement Results

	Area Scan	Zoom Scan
Date	2022-10-14	2022-10-14
psSAR1g [W/kg]	0.690	0.769
psSAR10g [W/kg]	0.282	0.299
Power Drift [dB]	-0.02	0.01
Power Scaling	Disabled	Disabled
Scaling Factor [dB]		
TSL Correction	No correction	No correction
M2/M1 [%]		41.2
Dist 3dB Peak [mm]		5.1



## Meas.4 Body Plane with Bottom Side on Ch60 in IEEE802.11 a Mode with Antenna Main

### Device under Test Properties

Model, Manufacturer	Dimensions [mm]	IMEI	DUT Type
VWNR71529	359.0 x 240.0 x 6.0		Laptop

### Exposure Conditions

Phantom Section, TSL	Position, Test Distance [mm]	Band	Group, UID	Frequency [MHz], Channel Number	Conversion Factor	TSL Conductivity [S/m]	TSL Permittivity	Ambient Temperature	Liquid Temperature
Flat, HSL	BOTTOM, 0.00	WLAN, 5GHz	WLAN, 10317-AAD	5300.0, 60	5.45	4.853	36.179	22.6°C	21.3°C

### Hardware Setup

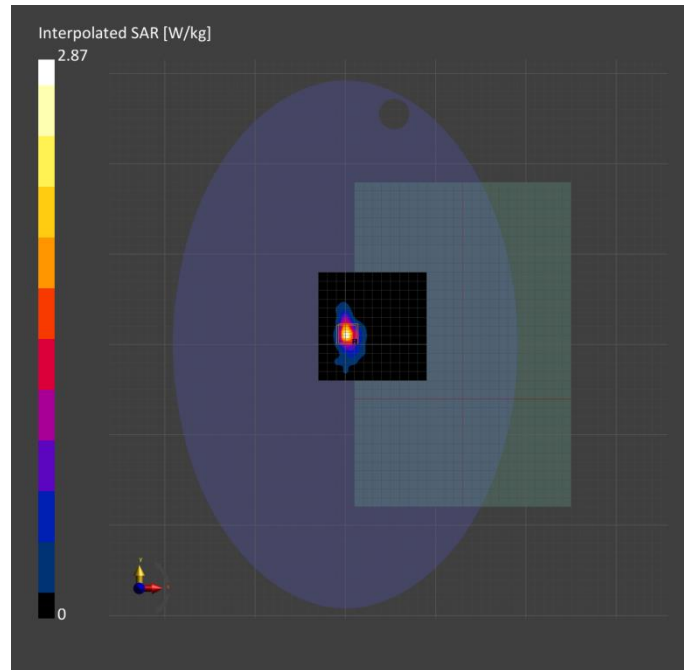
Phantom	TSL, Measured Date	Probe, Calibration Date	DAE, Calibration Date
ELI4 (20deg probe tilt) - 1012	HBBL-600-10000 2022-10-15	EX3DV4 - SN7607, 2022-07-04	DAE4 Sn878, 2022-06-13

### Scan Setup

	Area Scan	Zoom Scan
Grid Extents [mm]	120.0 x 120.0	24.0 x 24.0 x 22.0
Grid Steps [mm]	10.0 x 10.0	4.0 x 4.0 x 2.0
Sensor Surface [mm]	3.0	1.4
Graded Grid	Yes	Yes
Grading Ratio	1.5	1.4
MAIA	N/A	N/A
Surface Detection	All points	All points
Scan Method	Measured	Measured

### Measurement Results

	Area Scan	Zoom Scan
Date	2022-10-15	2022-10-15
psSAR1g [W/kg]	0.727	0.710
psSAR10g [W/kg]	0.224	0.233
Power Drift [dB]	-0.01	-0.00
Power Scaling	Disabled	Disabled
Scaling Factor [dB]		
TSL Correction	No correction	No correction
M2/M1 [%]		48.9
Dist 3dB Peak [mm]		4.8



## Meas.5 Body Plane with Bottom Side on Ch60 in IEEE802.11 a Mode with Antenna Aux.

### Device under Test Properties

Model, Manufacturer	Dimensions [mm]	IMEI	DUT Type
VWNR71529	359.0 x 240.0 x 6.0		Laptop

### Exposure Conditions

Phantom Section, TSL	Position, Test Distance [mm]	Band	Group, UID	Frequency [MHz], Channel Number	Conversion Factor	TSL Conductivity [S/m]	TSL Permittivity	Ambient Temperature	Liquid Temperature
Flat, HSL	BOTTOM, 0.00	WLAN, 5GHz	WLAN, 10317-AAD	5300.0, 60	5.45	4.853	36.179	22.6°C	21.3°C

### Hardware Setup

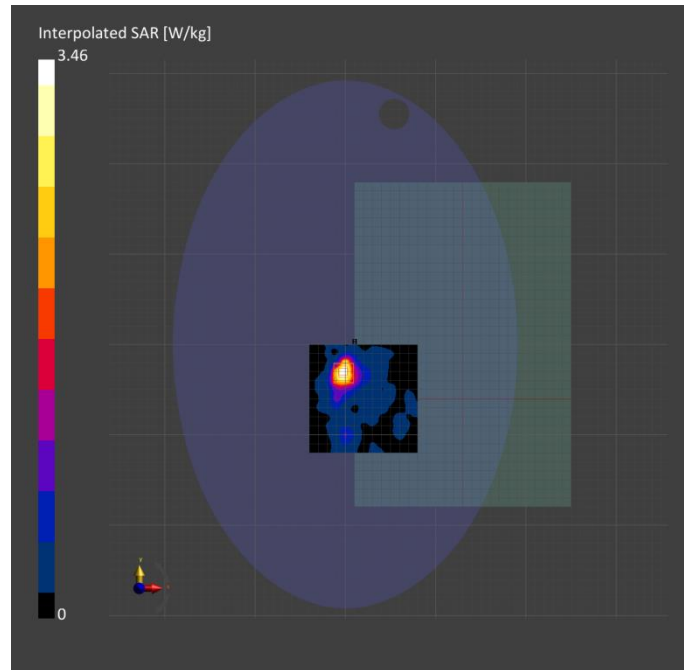
Phantom	TSL, Measured Date	Probe, Calibration Date	DAE, Calibration Date
ELI4 (20deg probe tilt) - 1012	HBBL-600-10000 2022-10-15	EX3DV4 - SN7607, 2022-07-04	DAE4 Sn878, 2022-06-13

### Scan Setup

	Area Scan	Zoom Scan
Grid Extents [mm]	120.0 x 120.0	24.0 x 24.0 x 22.0
Grid Steps [mm]	10.0 x 10.0	4.0 x 4.0 x 2.0
Sensor Surface [mm]	3.0	1.4
Graded Grid	Yes	Yes
Grading Ratio	1.5	1.4
MAIA	Y	N/A
Surface Detection	VMS + 6p	VMS + 6p
Scan Method	Measured	Measured

### Measurement Results

	Area Scan	Zoom Scan
Date	2022-10-15	2022-10-15
psSAR1g [W/kg]	0.678	0.934
psSAR10g [W/kg]	0.256	0.345
Power Drift [dB]	-0.02	-0.03
Power Scaling	Disabled	Disabled
Scaling Factor [dB]		
TSL Correction	No correction	No correction
M2/M1 [%]		52.1
Dist 3dB Peak [mm]		5.1



## Meas.6 Body Plane with Bottom Side on Ch58 in IEEE802.11 ac80 Mode with Antenna Main

### Device under Test Properties

Model, Manufacturer	Dimensions [mm]	IMEI	DUT Type
VWNR71529	359.0 x 240.0 x 6.0		Laptop

### Exposure Conditions

Phantom Section, TSL	Position, Test Distance [mm]	Band	Group, UID	Frequency [MHz], Channel Number	Conversion Factor	TSL Conductivity [S/m]	TSL Permittivity	Ambient Temperature	Liquid Temperature
Flat, HSL	BOTTOM, 0.00	WLAN, 5GHz	WLAN, 10544-AAC	5290.0, 58	5.45	4.822	36.204	22.6°C	21.3°C

### Hardware Setup

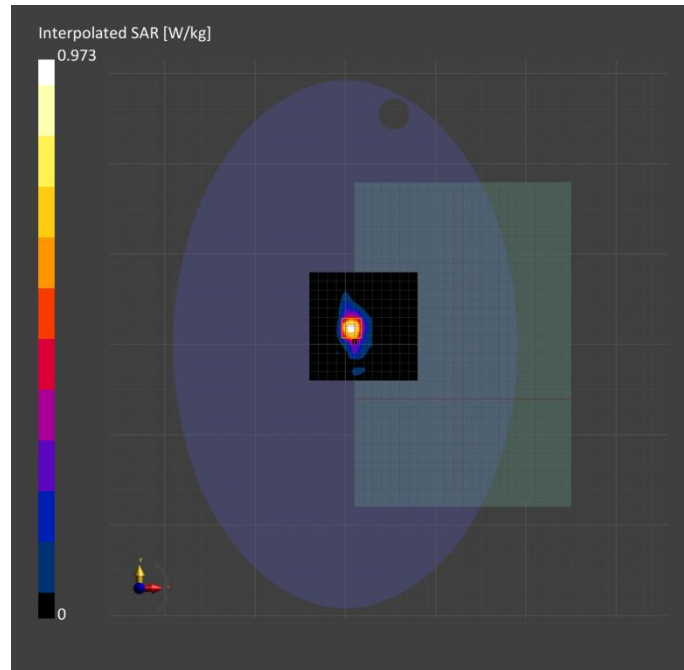
Phantom	TSL, Measured Date	Probe, Calibration Date	DAE, Calibration Date
ELI4 (20deg probe tilt) - 1012	HBBL-600-10000 2022-10-15	EX3DV4 - SN7607, 2022-07-04	DAE4 Sn878, 2022-06-13

### Scan Setup

	Area Scan	Zoom Scan
Grid Extents [mm]	120.0 x 120.0	22.0 x 22.0 x 22.0
Grid Steps [mm]	10.0 x 10.0	4.0 x 4.0 x 1.4
Sensor Surface [mm]	3.0	1.4
Graded Grid	Yes	Yes
Grading Ratio	1.5	1.4
MAIA	Y	Y
Surface Detection	VMS + 6p	VMS + 6p
Scan Method	Measured	Measured

### Measurement Results

	Area Scan	Zoom Scan
Date	2022-10-15	2022-10-15
psSAR1g [W/kg]	0.189	0.237
psSAR10g [W/kg]	0.066	0.073
Power Drift [dB]	-0.01	0.18
Power Scaling	Disabled	Disabled
Scaling Factor [dB]		
TSL Correction	No correction	No correction
M2/M1 [%]		58.5
Dist 3dB Peak [mm]		6.4





## Meas.7 Body Plane with Bottom Side on Ch58 in IEEE802.11 ac80 Mode with Antenna Aux.

### Device under Test Properties

Model, Manufacturer	Dimensions [mm]	IMEI	DUT Type
VWNR71529	359.0 x 240.0 x 6.0		Laptop

### Exposure Conditions

Phantom Section, TSL	Position, Test Distance [mm]	Band	Group, UID	Frequency [MHz], Channel Number	Conversion Factor	TSL Conductivity [S/m]	TSL Permittivity	Ambient Temperature	Liquid Temperature
Flat, HSL	BOTTOM, 0.00	WLAN, 5GHz	WLAN, 10544-AAC	5290.0, 58	5.45	4.822	36.204	22.6°C	21.3°C

### Hardware Setup

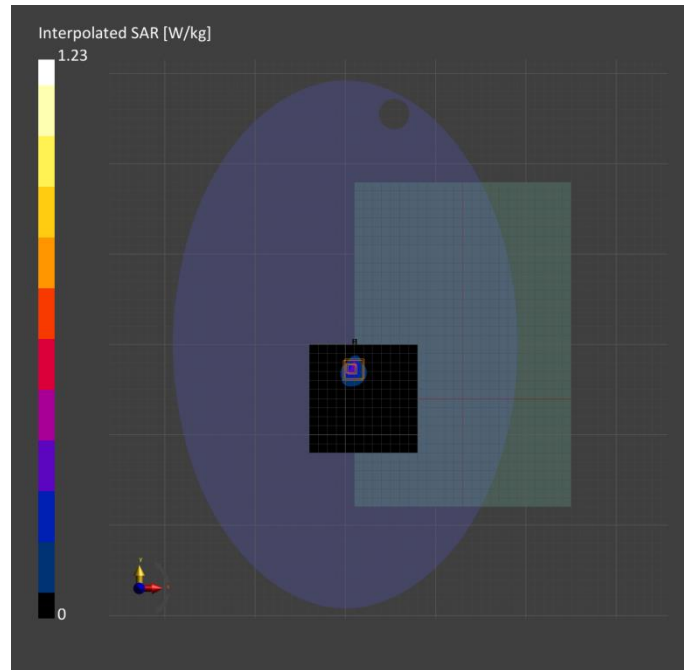
Phantom	TSL, Measured Date	Probe, Calibration Date	DAE, Calibration Date
ELI4 (20deg probe tilt) - 1012	HBBL-600-10000 2022-10-15	EX3DV4 - SN7607, 2022-07-04	DAE4 Sn878, 2022-06-13

### Scan Setup

	Area Scan	Zoom Scan
Grid Extents [mm]	120.0 x 120.0	22.0 x 22.0 x 22.0
Grid Steps [mm]	10.0 x 10.0	3.6 x 3.6 x 1.4
Sensor Surface [mm]	3.0	1.4
Graded Grid	Yes	Yes
Grading Ratio	1.5	1.4
MAIA	Y	Y
Surface Detection	VMS + 6p	VMS + 6p
Scan Method	Measured	Measured

### Measurement Results

	Area Scan	Zoom Scan
Date	2022-10-15	2022-10-15
psSAR1g [W/kg]	0.244	0.300
psSAR10g [W/kg]	0.088	0.094
Power Drift [dB]	0.05	-0.02
Power Scaling	Disabled	Disabled
Scaling Factor [dB]		
TSL Correction	No correction	No correction
M2/M1 [%]		60.2
Dist 3dB Peak [mm]		4.6



## Meas.8 Body Plane with Bottom Side on Ch140 in IEEE802.11 a Mode with Antenna Main

### Device under Test Properties

Model, Manufacturer	Dimensions [mm]	IMEI	DUT Type
VWNR71529	359.0 x 240.0 x 6.0		Laptop

### Exposure Conditions

Phantom Section, TSL	Position, Test Distance [mm]	Band	Group, UID	Frequency [MHz], Channel Number	Conversion Factor	TSL Conductivity [S/m]	TSL Permittivity	Ambient Temperature	Liquid Temperature
Flat, HSL	BOTTOM, 0.00	WLAN, 5GHz	WLAN, 10317-AAD	5700.0, 140	5.0	4.998	35.279	22.6°C	21.3°C

### Hardware Setup

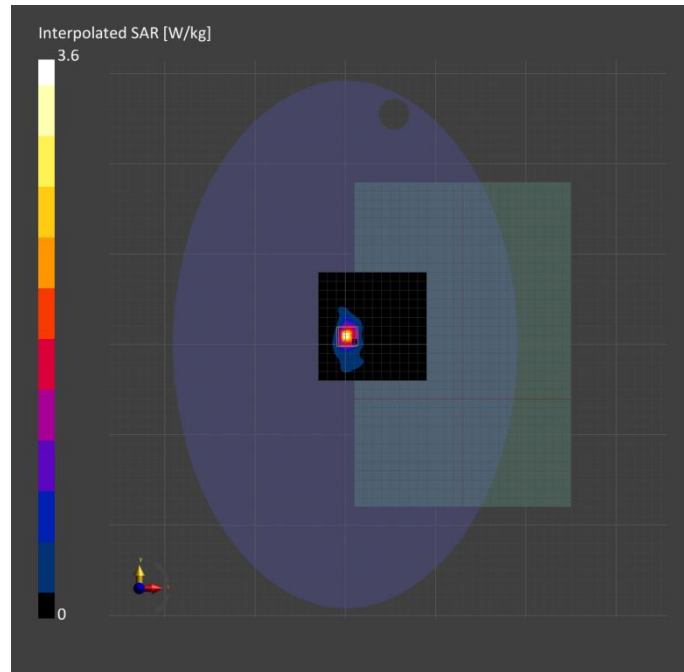
Phantom	TSL, Measured Date	Probe, Calibration Date	DAE, Calibration Date
ELI4 (20deg probe tilt) - 1012	HBBL-600-10000 2022-10-15	EX3DV4 - SN7607, 2022-07-04	DAE4 Sn878, 2022-06-13

### Scan Setup

	Area Scan	Zoom Scan
Grid Extents [mm]	120.0 x 120.0	24.0 x 24.0 x 22.0
Grid Steps [mm]	10.0 x 10.0	4.0 x 4.0 x 2.0
Sensor Surface [mm]	3.0	1.4
Graded Grid	Yes	Yes
Grading Ratio	1.5	1.4
MAIA	N/A	N/A
Surface Detection	All points	All points
Scan Method	Measured	Measured

### Measurement Results

	Area Scan	Zoom Scan
Date	2022-10-15	2022-10-15
psSAR1g [W/kg]	0.714	0.804
psSAR10g [W/kg]	0.210	0.221
Power Drift [dB]	-0.07	0.03
Power Scaling	Disabled	Disabled
Scaling Factor [dB]		
TSL Correction	No correction	No correction
M2/M1 [%]		48.1
Dist 3dB Peak [mm]		5.8



## Meas.9 Body Plane with Bottom Side on Ch140 in IEEE802.11 a Mode with Antenna Aux.

### Device under Test Properties

Model, Manufacturer	Dimensions [mm]	IMEI	DUT Type
VWNR71529	359.0 x 240.0 x 6.0		Laptop

### Exposure Conditions

Phantom Section, TSL	Position, Test Distance [mm]	Band	Group, UID	Frequency [MHz], Channel Number	Conversion Factor	TSL Conductivity [S/m]	TSL Permittivity	Ambient Temperature	Liquid Temperature
Flat, HSL	BOTTOM, 0.00	WLAN, 5GHz	WLAN, 10317-AAD	5700.0, 140	5.0	4.998	35.279	22.6°C	21.3°C

### Hardware Setup

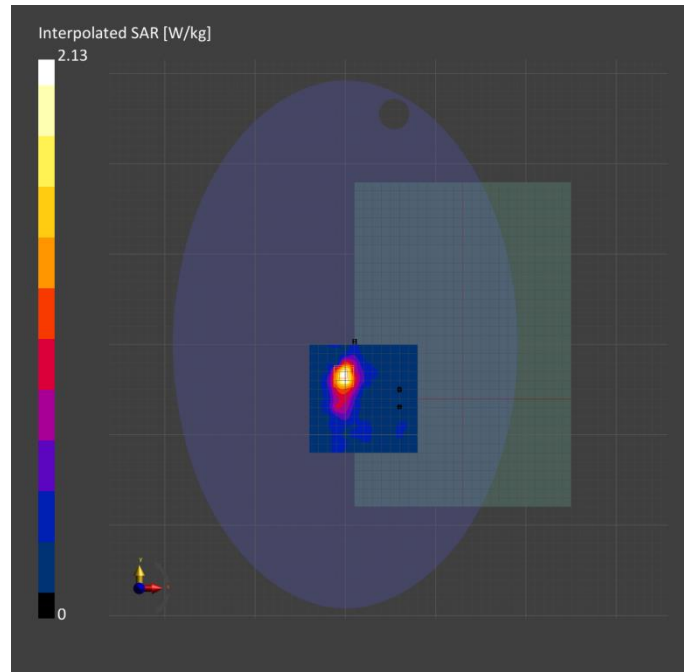
Phantom	TSL, Measured Date	Probe, Calibration Date	DAE, Calibration Date
ELI4 (20deg probe tilt) - 1012	HBBL-600-10000 2022-10-15	EX3DV4 - SN7607, 2022-07-04	DAE4 Sn878, 2022-06-13

### Scan Setup

	Area Scan	Zoom Scan
Grid Extents [mm]	120.0 x 120.0	24.0 x 24.0 x 22.0
Grid Steps [mm]	10.0 x 10.0	4.0 x 4.0 x 2.0
Sensor Surface [mm]	3.0	1.4
Graded Grid	Yes	Yes
Grading Ratio	1.5	1.4
MAIA	Y	N/A
Surface Detection	VMS + 6p	VMS + 6p
Scan Method	Measured	Measured

### Measurement Results

	Area Scan	Zoom Scan
Date	2022-10-15	2022-10-15
psSAR1g [W/kg]	0.422	0.562
psSAR10g [W/kg]	0.158	0.232
Power Drift [dB]	-0.07	-0.00
Power Scaling	Disabled	Disabled
Scaling Factor [dB]		
TSL Correction	No correction	No correction
M2/M1 [%]		52.0
Dist 3dB Peak [mm]		5.8



## Meas.10 Body Plane with Bottom Side on Ch106 in IEEE802.11 ac80 Mode with Antenna Main

### Device under Test Properties

Model, Manufacturer	Dimensions [mm]	IMEI	DUT Type
VWNR71529	359.0 x 240.0 x 6.0		Laptop

### Exposure Conditions

Phantom Section, TSL	Position, Test Distance [mm]	Band	Group, UID	Frequency [MHz], Channel Number	Conversion Factor	TSL Conductivity [S/m]	TSL Permittivity	Ambient Temperature	Liquid Temperature
Flat, HSL	BOTTOM, 0.00	WLAN, 5GHz	WLAN, 10544-AAC	5530.0, 106	4.9	4.787	36.252	22.6°C	21.3°C

### Hardware Setup

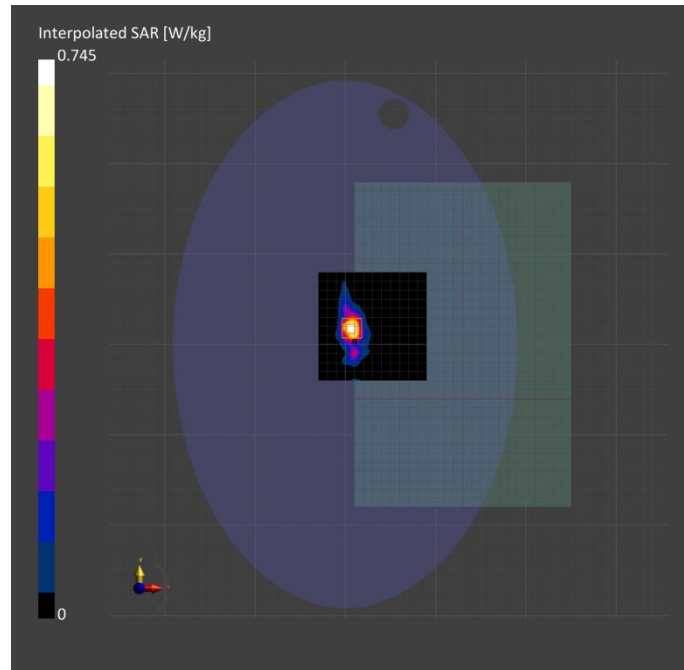
Phantom	TSL, Measured Date	Probe, Calibration Date	DAE, Calibration Date
ELI4 (20deg probe tilt) - 1012	HBBL-600-10000 2022-10-15	EX3DV4 - SN7607, 2022-07-04	DAE4 Sn878, 2022-06-13

### Scan Setup

	Area Scan	Zoom Scan
Grid Extents [mm]	120.0 x 120.0	24.0 x 24.0 x 22.0
Grid Steps [mm]	10.0 x 10.0	4.0 x 4.0 x 1.4
Sensor Surface [mm]	3.0	1.4
Graded Grid	Yes	Yes
Grading Ratio	1.5	1.4
MAIA	Y	Y
Surface Detection	VMS + 6p	VMS + 6p
Scan Method	Measured	Measured

### Measurement Results

	Area Scan	Zoom Scan
Date	2022-10-15	2022-10-15
psSAR1g [W/kg]	0.118	0.162
psSAR10g [W/kg]	0.040	0.045
Power Drift [dB]	-0.08	-0.07
Power Scaling	Disabled	Disabled
Scaling Factor [dB]		
TSL Correction	No correction	No correction
M2/M1 [%]		63.1
Dist 3dB Peak [mm]		5.1





## Meas.11 Body Plane with Bottom Side on Ch122 in IEEE802.11 ac80 Mode with Antenna Aux.

### Device under Test Properties

Model, Manufacturer	Dimensions [mm]	IMEI	DUT Type
VWNR71529	359.0 x 240.0 x 6.0		Laptop

### Exposure Conditions

Phantom Section, TSL	Position, Test Distance [mm]	Band	Group, UID	Frequency [MHz], Channel Number	Conversion Factor	TSL Conductivity [S/m]	TSL Permittivity	Ambient Temperature	Liquid Temperature
Flat, HSL	BOTTOM, 0.00	WLAN, 5GHz	WLAN, 10544-AAC	5610.0, 122	4.9	4.883	35.962	22.6°C	21.3°C

### Hardware Setup

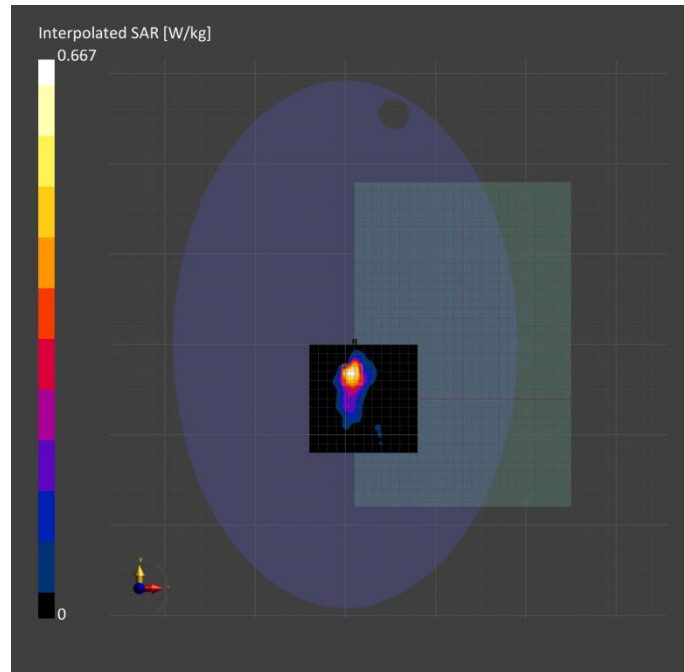
Phantom	TSL, Measured Date	Probe, Calibration Date	DAE, Calibration Date
ELI4 (20deg probe tilt) - 1012	HBBL-600-10000 2022-10-15	EX3DV4 - SN7607, 2022-07-04	DAE4 Sn878, 2022-06-13

### Scan Setup

	Area Scan	Zoom Scan
Grid Extents [mm]	120.0 x 120.0	24.0 x 24.0 x 22.0
Grid Steps [mm]	10.0 x 10.0	4.0 x 4.0 x 2.0
Sensor Surface [mm]	3.0	1.4
Graded Grid	Yes	Yes
Grading Ratio	1.5	1.4
MAIA	Y	Y
Surface Detection	VMS + 6p	VMS + 6p
Scan Method	Measured	Measured

### Measurement Results

	Area Scan	Zoom Scan
Date	2022-10-15	2022-10-15
psSAR1g [W/kg]	0.129	0.151
psSAR10g [W/kg]	0.045	0.046
Power Drift [dB]	7.14	0.05
Power Scaling	Disabled	Disabled
Scaling Factor [dB]		
TSL Correction	No correction	No correction
M2/M1 [%]		49.5
Dist 3dB Peak [mm]		5.4



## Meas.12 Body Plane with Bottom Side on Ch149 in IEEE802.11 a Mode with Antenna Main

### Device under Test Properties

Model, Manufacturer	Dimensions [mm]	IMEI	DUT Type
VWNR71529	359.0 x 240.0 x 6.0		Laptop

### Exposure Conditions

Phantom Section, TSL	Position, Test Distance [mm]	Band	Group, UID	Frequency [MHz], Channel Number	Conversion Factor	TSL Conductivity [S/m]	TSL Permittivity	Ambient Temperature	Liquid Temperature
Flat, HSL	BOTTOM, 0.00	WLAN, 5GHz	WLAN, 10317-AAD	5745.0, 149	5.0	5.224	36.108	22.6°C	21.3°C

### Hardware Setup

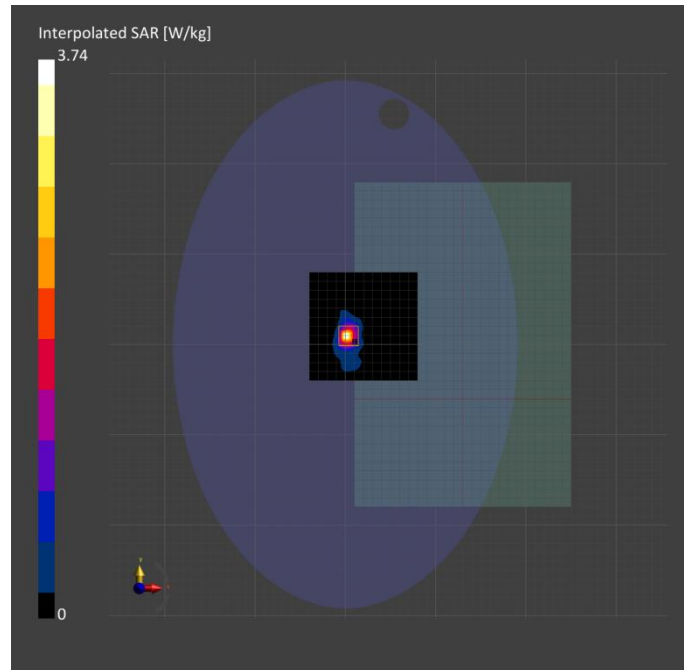
Phantom	TSL, Measured Date	Probe, Calibration Date	DAE, Calibration Date
ELI4 (20deg probe tilt) - 1012	HBBL-600-10000 2022-10-15	EX3DV4 - SN7607, 2022-07-04	DAE4 Sn878, 2022-06-13

### Scan Setup

	Area Scan	Zoom Scan
Grid Extents [mm]	120.0 x 120.0	24.0 x 24.0 x 22.0
Grid Steps [mm]	10.0 x 10.0	4.0 x 4.0 x 2.0
Sensor Surface [mm]	3.0	1.4
Graded Grid	Yes	Yes
Grading Ratio	1.5	1.4
MAIA	N/A	N/A
Surface Detection	All points	All points
Scan Method	Measured	Measured

### Measurement Results

	Area Scan	Zoom Scan
Date	2022-10-15	2022-10-15
psSAR1g [W/kg]	0.738	0.829
psSAR10g [W/kg]	0.218	0.230
Power Drift [dB]	0.01	0.01
Power Scaling	Disabled	Disabled
Scaling Factor [dB]		
TSL Correction	No correction	No correction
M2/M1 [%]		48.0
Dist 3dB Peak [mm]		5.8



## Meas.13 Body Plane with Bottom Side on Ch165 in IEEE802.11 a Mode with Antenna Aux.

### Device under Test Properties

Model, Manufacturer	Dimensions [mm]	IMEI	DUT Type
VWNR71529	359.0 x 240.0 x 6.0		Laptop

### Exposure Conditions

Phantom Section, TSL	Position, Test Distance [mm]	Band	Group, UID	Frequency [MHz], Channel Number	Conversion Factor	TSL Conductivity [S/m]	TSL Permittivity	Ambient Temperature	Liquid Temperature
Flat, HSL	BOTTOM, 0.00	WLAN, 5GHz	WLAN, 10317-AAD	5825.0, 165	5.0	5.342	35.748	22.6°C	21.3°C

### Hardware Setup

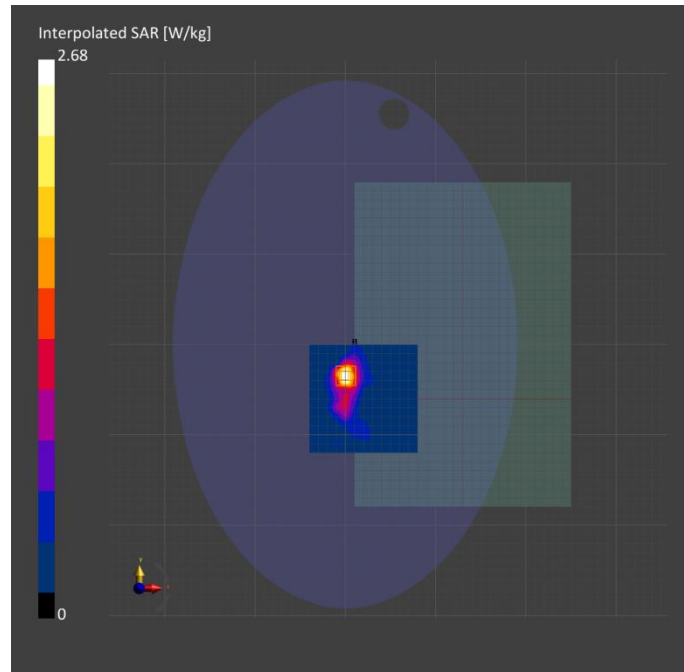
Phantom	TSL, Measured Date	Probe, Calibration Date	DAE, Calibration Date
ELI4 (20deg probe tilt) - 1012	HBBL-600-10000 2022-10-15	EX3DV4 - SN7607, 2022-07-04	DAE4 Sn878, 2022-06-13

### Scan Setup

	Area Scan	Zoom Scan
Grid Extents [mm]	120.0 x 120.0	24.0 x 24.0 x 22.0
Grid Steps [mm]	10.0 x 10.0	4.0 x 4.0 x 2.0
Sensor Surface [mm]	3.0	1.4
Graded Grid	Yes	Yes
Grading Ratio	1.5	1.4
MAIA	Y	N/A
Surface Detection	VMS + 6p	VMS + 6p
Scan Method	Measured	Measured

### Measurement Results

	Area Scan	Zoom Scan
Date	2022-10-15	2022-10-15
psSAR1g [W/kg]	0.552	0.709
psSAR10g [W/kg]	0.199	0.279
Power Drift [dB]	-0.06	0.02
Power Scaling	Disabled	Disabled
Scaling Factor [dB]		
TSL Correction	No correction	No correction
M2/M1 [%]		51.0
Dist 3dB Peak [mm]		6.9



## Meas.14 Body Plane with Bottom Side on Ch155 in IEEE802.11 ac80 Mode with Antenna Main

### Device under Test Properties

Model, Manufacturer	Dimensions [mm]	IMEI	DUT Type
VWNR71529	359.0 x 240.0 x 6.0		Laptop

### Exposure Conditions

Phantom Section, TSL	Position, Test Distance [mm]	Band	Group, UID	Frequency [MHz], Channel Number	Conversion Factor	TSL Conductivity [S/m]	TSL Permittivity	Ambient Temperature	Liquid Temperature
Flat, HSL	BOTTOM, 0.00	WLAN, 5GHz	WLAN, 10544-AAC	5775.0, 155	5.0	5.263	35.947	22.6°C	21.3°C

### Hardware Setup

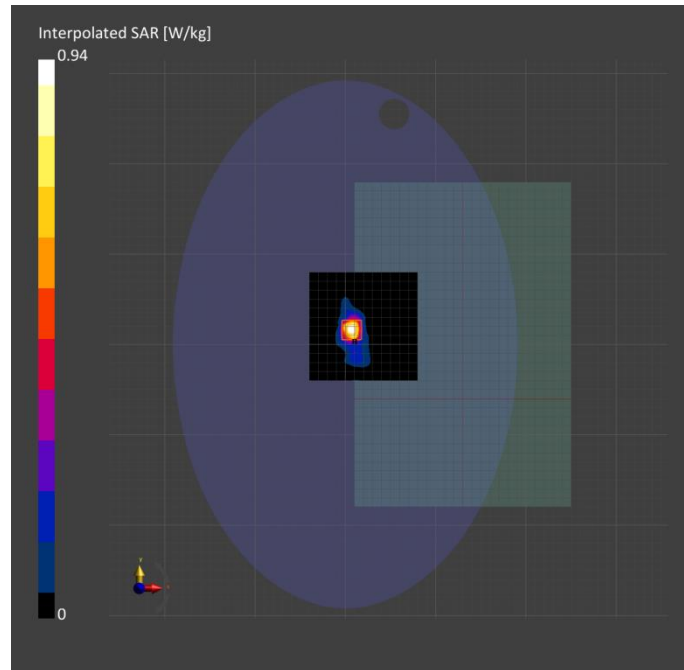
Phantom	TSL, Measured Date	Probe, Calibration Date	DAE, Calibration Date
ELI4 (20deg probe tilt) - 1012	HBBL-600-10000 2022-10-15	EX3DV4 - SN7607, 2022-07-04	DAE4 Sn878, 2022-06-13

### Scan Setup

	Area Scan	Zoom Scan
Grid Extents [mm]	120.0 x 120.0	22.0 x 22.0 x 22.0
Grid Steps [mm]	10.0 x 10.0	4.0 x 4.0 x 1.4
Sensor Surface [mm]	3.0	1.4
Graded Grid	Yes	Yes
Grading Ratio	1.5	1.4
MAIA	Y	Y
Surface Detection	VMS + 6p	VMS + 6p
Scan Method	Measured	Measured

### Measurement Results

	Area Scan	Zoom Scan
Date	2022-10-15	2022-10-15
psSAR1g [W/kg]	0.159	0.203
psSAR10g [W/kg]	0.053	0.057
Power Drift [dB]	-0.03	-0.06
Power Scaling	Disabled	Disabled
Scaling Factor [dB]		
TSL Correction	No correction	No correction
M2/M1 [%]		56.1
Dist 3dB Peak [mm]		6.4





## Meas.15 Body Plane with Bottom Side on Ch155 in IEEE802.11 ac80 Mode with Antenna Aux.

### Device under Test Properties

Model, Manufacturer	Dimensions [mm]	IMEI	DUT Type
VWNR71529	359.0 x 240.0 x 6.0		Laptop

### Exposure Conditions

Phantom Section, TSL	Position, Test Distance [mm]	Band	Group, UID	Frequency [MHz], Channel Number	Conversion Factor	TSL Conductivity [S/m]	TSL Permittivity	Ambient Temperature	Liquid Temperature
Flat, HSL	BOTTOM, 0.00	WLAN, 5GHz	WLAN, 10544-AAC	5775.0, 155	5.0	5.263	35.947	22.6°C	21.3°C

### Hardware Setup

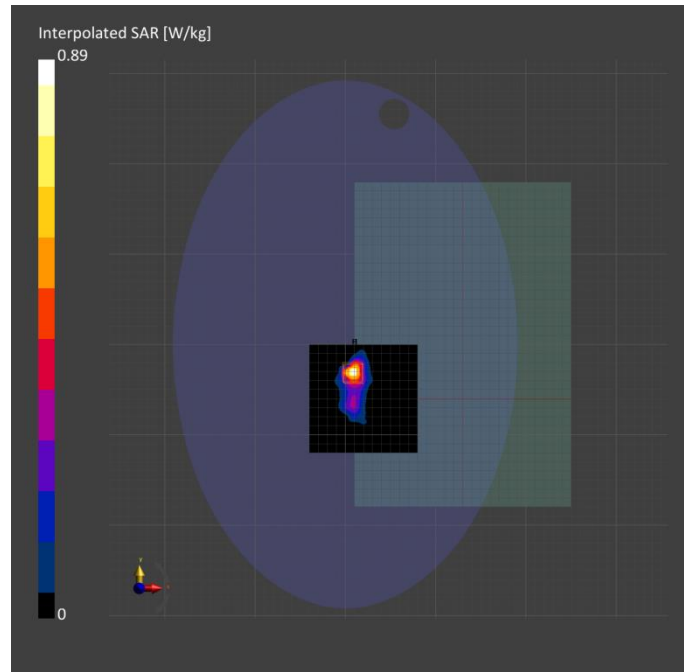
Phantom	TSL, Measured Date	Probe, Calibration Date	DAE, Calibration Date
ELI4 (20deg probe tilt) - 1012	HBBL-600-10000 2022-10-15	EX3DV4 - SN7607, 2022-07-04	DAE4 Sn878, 2022-06-13

### Scan Setup

	Area Scan	Zoom Scan
Grid Extents [mm]	120.0 x 120.0	22.0 x 22.0 x 22.0
Grid Steps [mm]	10.0 x 10.0	4.0 x 4.0 x 1.4
Sensor Surface [mm]	3.0	1.4
Graded Grid	Yes	Yes
Grading Ratio	1.5	1.4
MAIA	Y	Y
Surface Detection	VMS + 6p	VMS + 6p
Scan Method	Measured	Measured

### Measurement Results

	Area Scan	Zoom Scan
Date	2022-10-15	2022-10-15
psSAR1g [W/kg]	0.167	0.194
psSAR10g [W/kg]	0.053	0.056
Power Drift [dB]	-0.09	-0.07
Power Scaling	Disabled	Disabled
Scaling Factor [dB]		
TSL Correction	No correction	No correction
M2/M1 [%]		56.2
Dist 3dB Peak [mm]		5.7



## **ANNEX D EUT EXTERNAL PHOTOS**

Please refer the document “BL-SZ22A0134-AW.pdf”.

## **ANNEX E SAR TEST SETUP PHOTOS**

Please refer the document “BL-SZ22A0134-AS.pdf”.

## **ANNEX F CALIBRATION REPORT**

Please refer the document “CALIBRATION REPORT.pdf”.

## Statement

1. The laboratory guarantees the scientificity, accuracy and impartiality of the test, and is responsible for all the information in the report, except the information provided by the customer. The customer is responsible for the impact of the information provided on the validity of the results.
2. The report without China inspection body and laboratory Mandatory Approval (CMA) mark has no effect of proving to the society.
3. For the report with CNAS mark or A2LA mark, the items marked with "☆" are not within the accredited scope.
4. This report is invalid if it is altered, without the signature of the testing and approval personnel, or without the "inspection and testing dedicated stamp" or test report stamp.
5. The test data and results are only valid for the tested samples provided by the customer.
6. This report shall not be partially reproduced without the written permission of the laboratory.
7. Any objection shall be raised to the laboratory within 30 days after receiving the report.

--END OF REPORT--