



# User Guide

13.3" Notebook  
GWTN133-1BL

**Notes:**

1. Before using the product, be sure to read *Important safety information* firstly
2. Some instructions in this guide may assume that you are using the built-in Windows 10 operating system. If you are using other Windows operating system, some operations maybe slightly different. And some operations may not apply to you, and thus shouldn't affect your use of this computer.
3. The features described in this guide are only used for Gateway GWTN133-1 model, Some features may not be available on your own other computers and or your other own computers may include some features that are not described in this user guide.

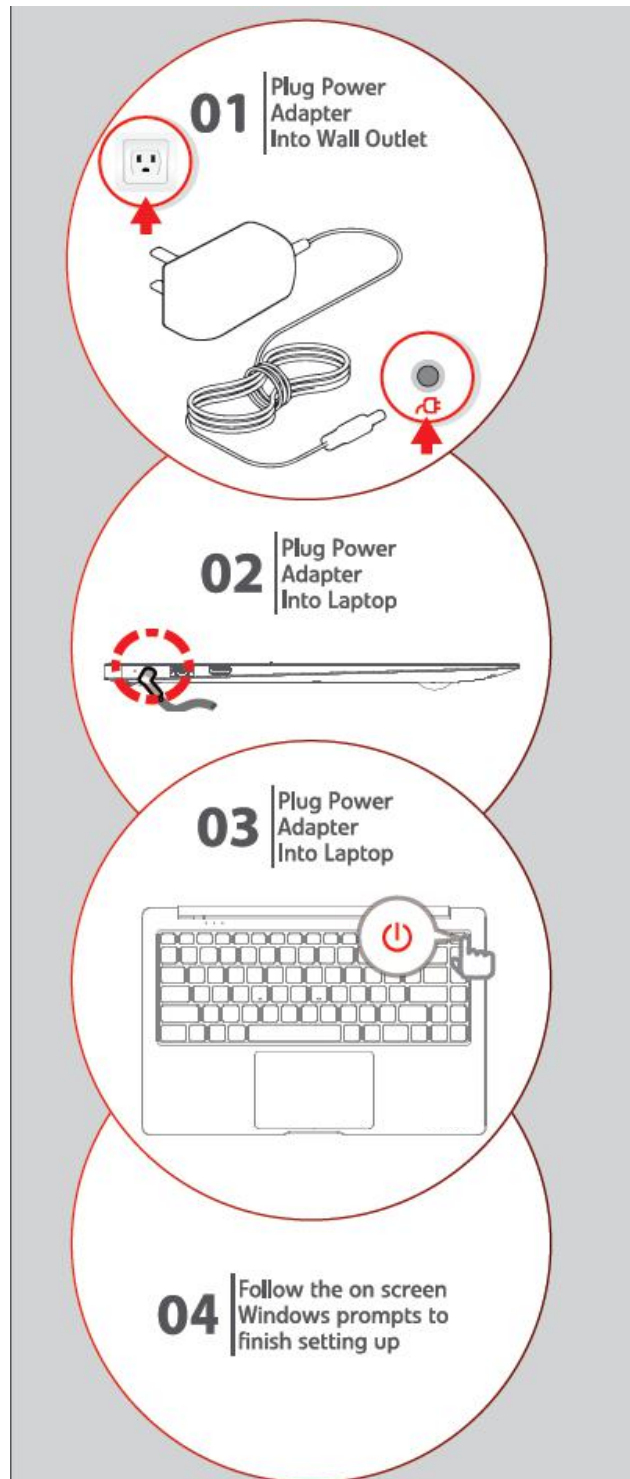
**Notice for users in USA**

- If your product is not working correctly, Do contact the after sale office directly
- For more technical assistance, contact ESI support specialist 7:00am to 4:00pm by calling to 888-999-1682
- Additionally, you can download supporting information and updates on the ESI Website located at [www.gatewayusa.com](http://www.gatewayusa.com)

First Edition(June 2021)

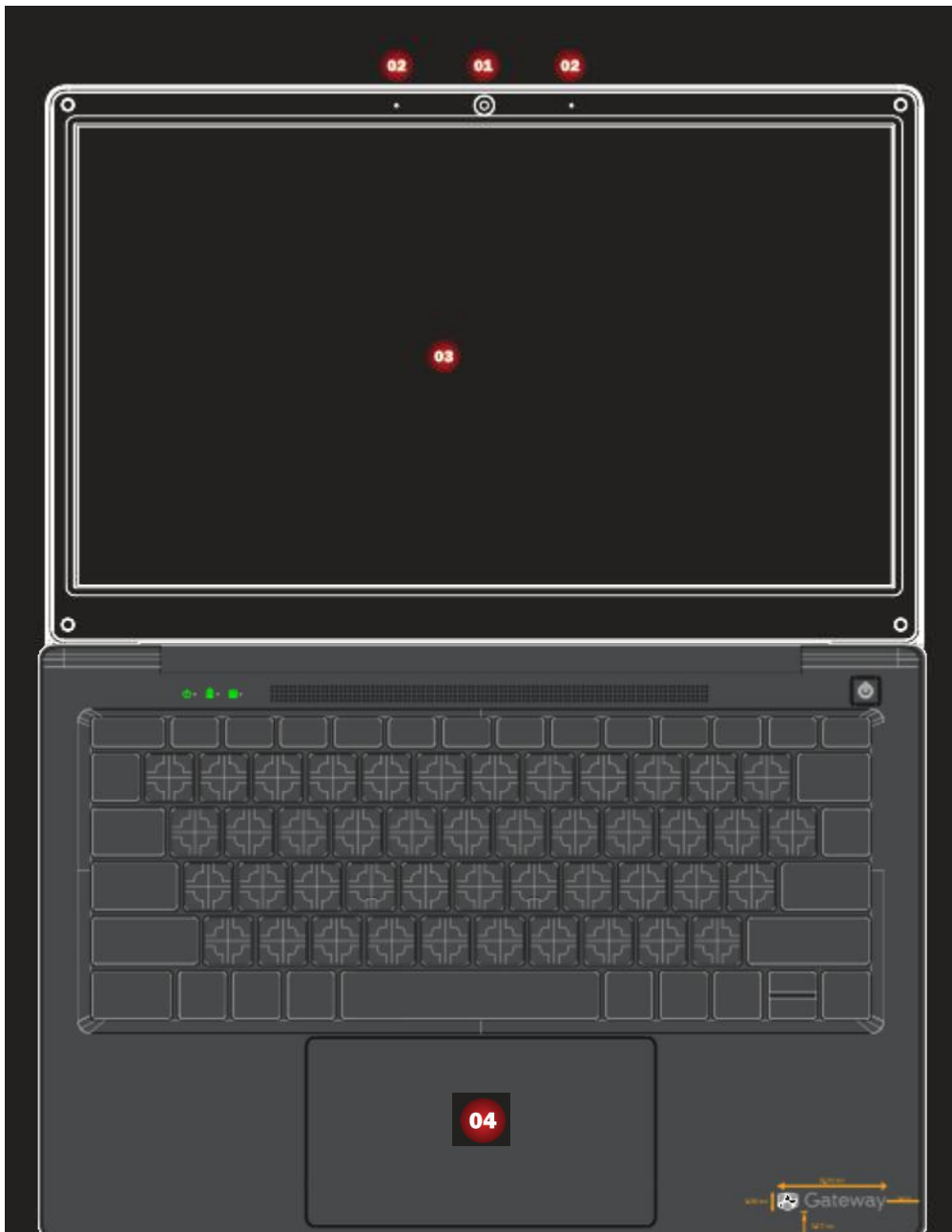
©copyright ESI 2021

Follow the below 4 steps for a quick start of your computer.



This chapter provides information about the locations of connectors

### Top view



Attention: Do NOT open the display panel beyond 135 degrees When closing the display panel, and Do NOT leave pens or any other objects between the display panel and the keyboard. Otherwise, the display panel may be damaged.

**01** Camera: 1.0M pixel front camera used for photo or video.

**02** Microphone: The built-in two digital microphones can be used for video conference, or simple audio recordings with noise cancelling functions

**03** Display: The 1920x1080 IPS display panel provides the best brilliant visual output

**04** Touchpad: The big size of touchpad provide user experience of precise click,scroll,drag

### Right side view



**05** SIM slot: connect to the network

**06** Headphone port: connects to external 3.5mm headphones for audio output

**07** Micro SD slot: connect to micro sd card

**08** USB3.0:connects to USB3.0&USB2.0 devices

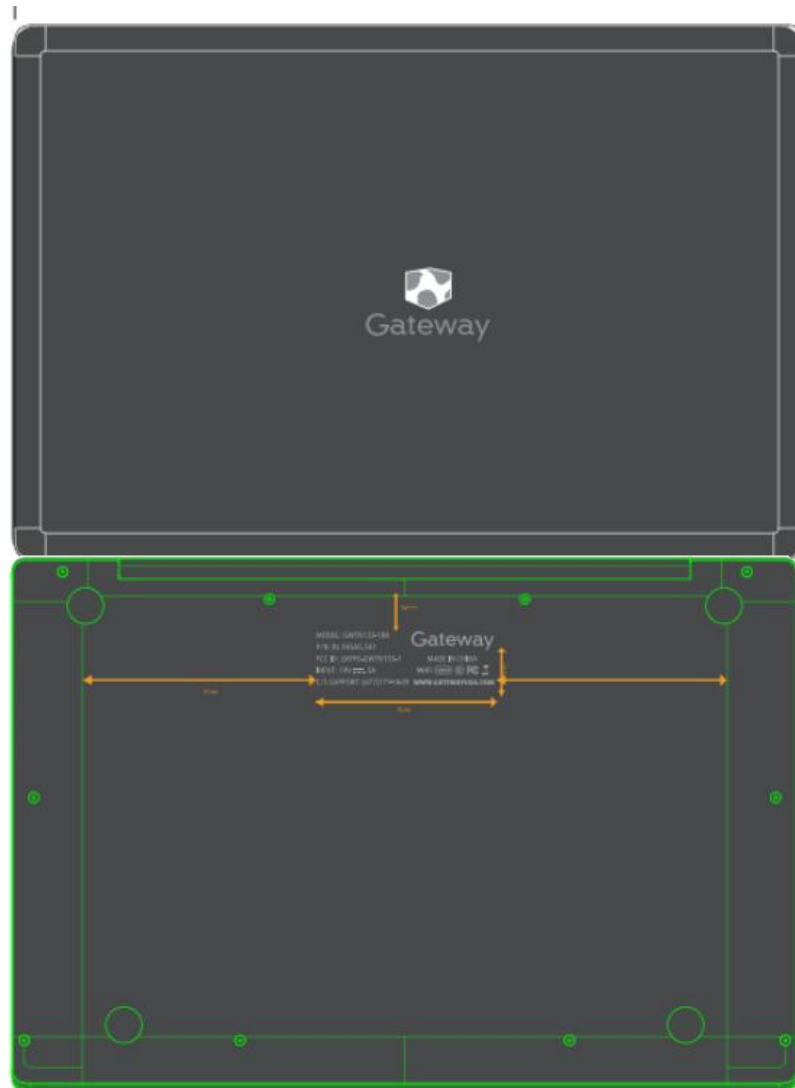
### Left side view



**09** Charging port: connects to 3.5mm DC adapter for charging

**10** Charging port: connects to type-c adapter for charging

## Bottom view



## Chapter3 Getting to know more about your computer

### First use

1. Connect the power cord to the ac power adapter.
2. Connect the ac power adapter to the ac power adapter jack of the computer
3. Plug the power cord into an electrical outlet.
4. Press the power button on the keyboard to boot the computer

### Putting your computer into sleep state or shutting it down

When you don't want to work with your computer, you can put it into sleep state or shut it down. or if you will be away from your computer for only a short time, you also can put the computer into sleep state. When the computer is in sleep state, you can quickly wake it to resume use and bypass the startup process.


To put the computer into sleep state, do either of the following:

- Click and select Sleep from the Start menu.
- Press power button on keyboard.

To wake the computer, do either of the following:

- Press the power button.
- Press any key on the keyboard.

To shut down the computer, do the following:

- click the  icon and choose the “shut down” option

### **Using the touchpad**

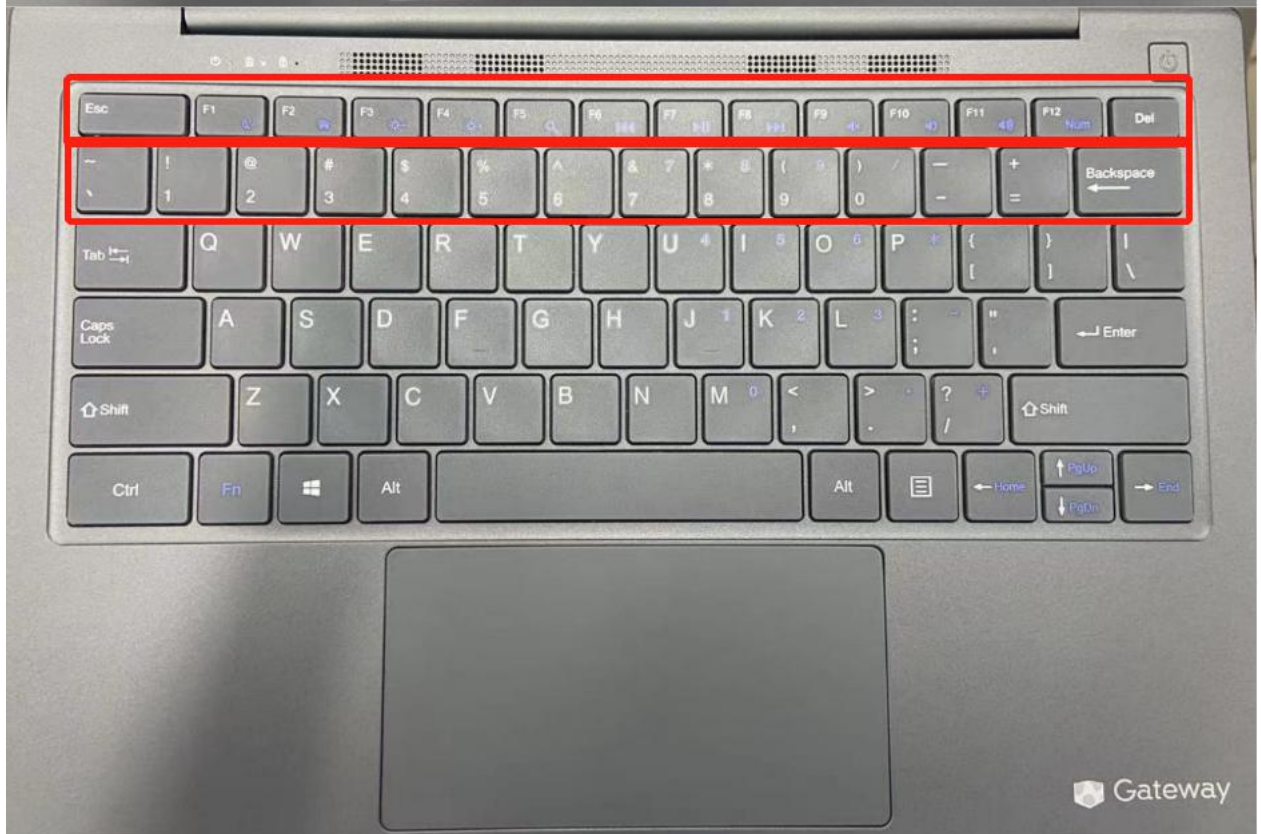
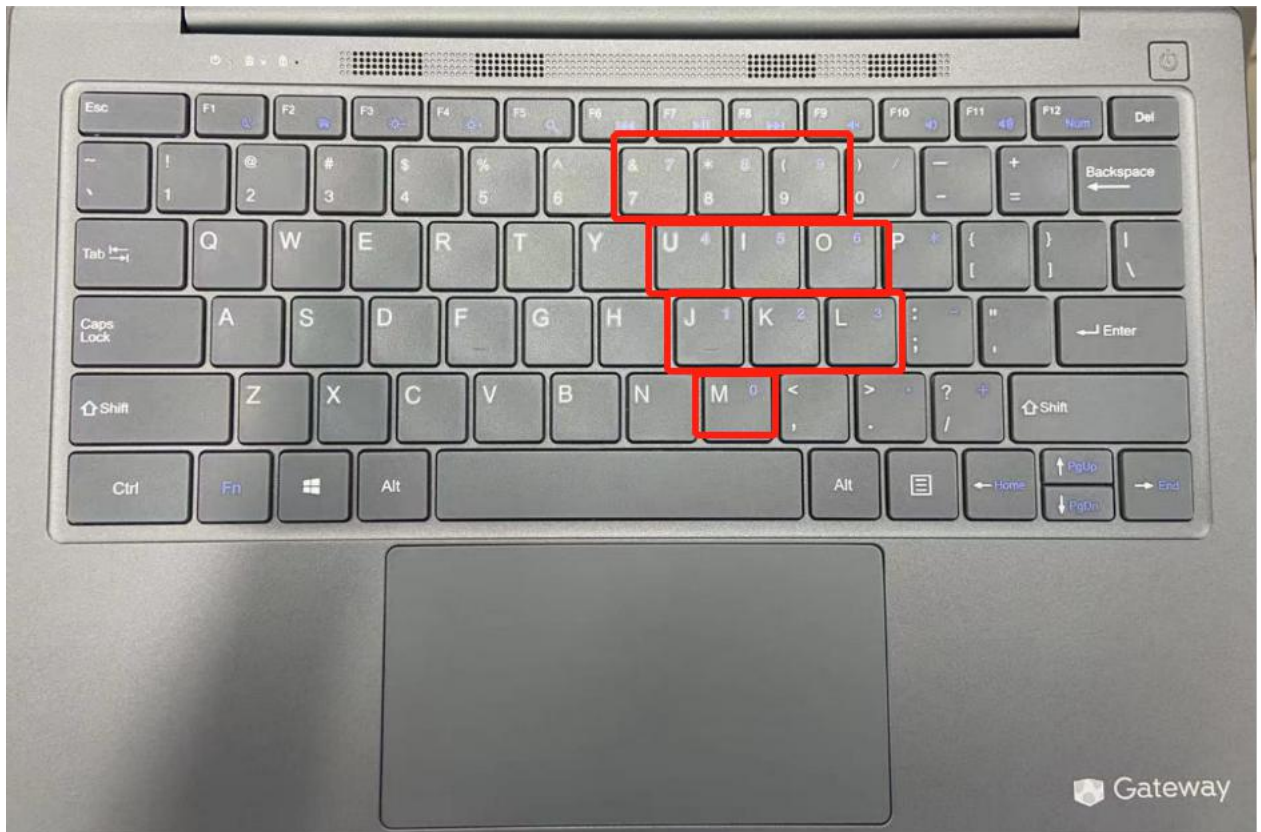
- Touch: to move the cursor on the screen, slide your fingertip over the pad towards the direction in which you want the cursor to move.
- Left click button: Has the same function with that of the left mouse button on a conventional mouse
- Right click button: Has the same function with that of the right mouse button on a conventional mouse

### **Using the Keyboard**

#### **● Numeric keypad**

The keyboard has a separate numeric keypad besides the standard key part. To enable or disable the numeric keypad press Fn+F12

#### **● Function key combinations**





Through the use of the function keys, you can change operational features instantly. To use this function, press and hold “Fn” and then press one of the function keys

Fn+Esc	Turn on or off the sleeping mode
Fn+F1	Enter or exit home page
Fn+F2	Enable or disable touchpad
Fn+F3	Volume down
Fn+F4	Volume up
Fn+F5	Turn on or off the volume
Fn+F6	Stop or pause the Windows media player
Fn+F7	Fast rewind the Windows media player
Fn+F8	Fast forward the Windows media player
Fn+F9	NA
Fn+F10	Enable or disable insert function
Fn+F11	NA
Fn+F12	Enable or disable the numeric keypad
Fn+~	input ~
Fn+!	input !
Fn+@	input @
Fn+#	input #
Fn+\$	input \$
Fn+%	input %
Fn+^	input ^
Fn+&	input &
Fn+*	input *
Fn+(	input (
Fn+)	input )
Fn+—	input —

Fn++	input +
------	---------

### **Connecting external devices**

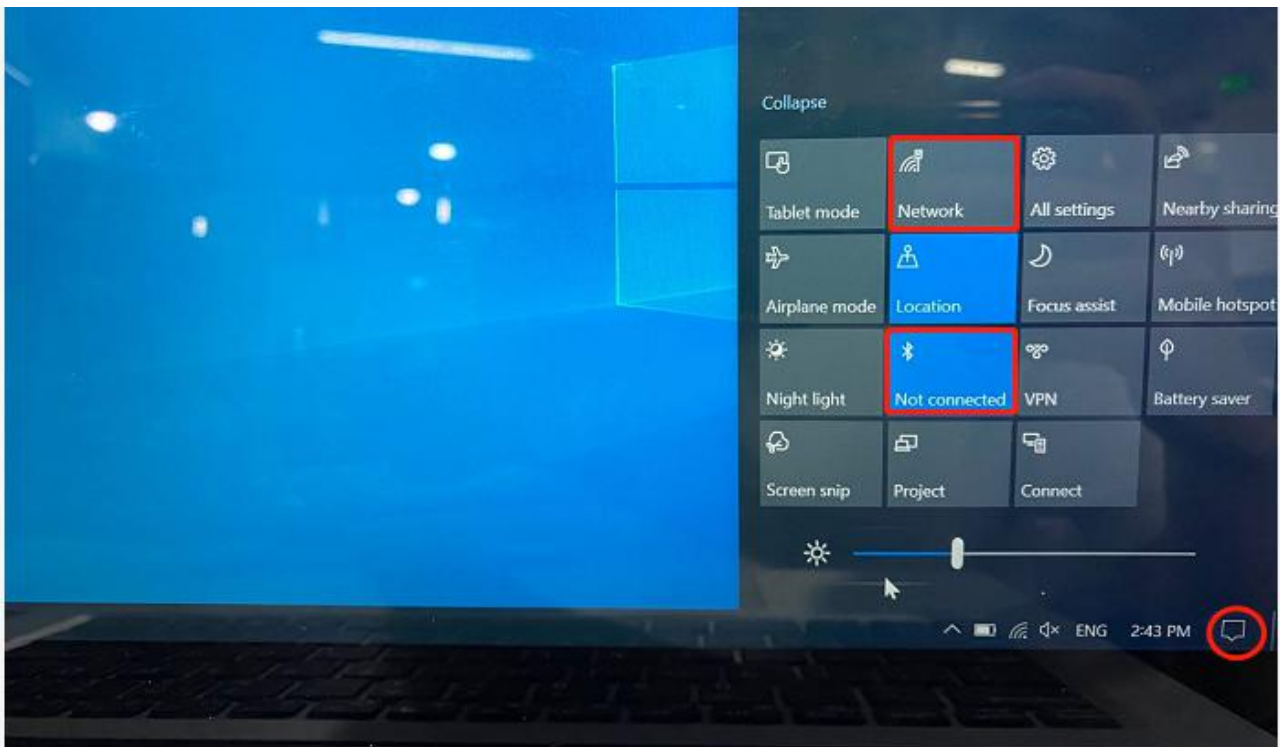
Your computer has a wide range of built-in features and connection capabilities. Which supports the following types of peripherals:

- USB3.0: connects to USB3.0&USB2.0 devices
- Type-C: connects to Type-C devices
- Micro SD slot: connect to micro sd card
- Mini HDMI port: connects to devices with HDMI port such as a TV or a display to output the laptop's video or audio.

### **Connecting a Bluetooth device and a WIFI AP**

Since your computer has an integrated WIFI and Bluetooth RF module, that makes it possible for your device to connect with other BT device or a wireless point to transfer data without cables, such as with a BT speaker, cellphone, PADS

- Pair a BT device through clicking below icon
- connect a wifi AP through clicking below icon



The SAR limit in the United States (FCC) is 1.6 W/kg, which is more than 1 gram of tissue on average. The device has also been tested against this SAR limit. According to this standard, the highest SAR value reported is 1.192 W/kg. The device has undergone a typical body-worn operation test, and the back of the laptop is kept at a distance of 0 mm from the body. To comply with FCC radio frequency exposure requirements, please use accessories that maintain a 0 mm spacing between the user's body and the back of the computer. The use of holsters and similar accessories should not include metal parts in their components. The use of accessories that do not meet these requirements may not meet the FCC radio frequency exposure requirements and should be avoided.

### **5G WIFI statement**

The device is restricted to indoor use when operated in 5150MHz~5350MHz to reduce the potential for interference.

### **FCC STATEMENT :**

This device complies with Part 15 of the FCC Rules. Operation is subject to the following two conditions:

- (1) This device may not cause harmful interference, and
- (2) This device must accept any interference received, including interference that may cause undesired operation.

**Warning:** Changes or modifications not expressly approved by the party

responsible for compliance could void the user's authority to operate the equipment.

NOTE: This equipment has been tested and found to comply with the limits for a Class B digital device, pursuant to Part 15 of the FCC Rules. These limits are designed to provide reasonable protection against harmful interference in a residential installation. This equipment generates uses and can radiate radio frequency energy and, if not installed and used in accordance with the instructions, may cause harmful interference to radio communications. However, there is no guarantee that interference will not occur in a particular installation. If this equipment does cause harmful interference to radio or television reception, which can be determined by turning the equipment off and on, the user is encouraged to try to correct the interference by one or more of the following measures:

Reorient or relocate the receiving antenna.

Increase the separation between the equipment and receiver.

Connect the equipment into an outlet on a circuit different from that to which the receiver is connected.

Consult the dealer or an experienced radio/TV technician for help.

**RF warning statement:**

The device has been evaluated to meet general RF exposure requirement. The device can be used in portable exposure condition without restriction.