

# ME-USI150

## User manual

Model:ME-USI150

The net content: 13.4g ± 3.0g

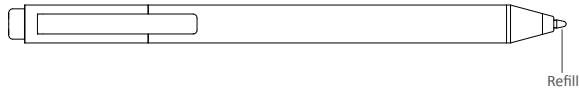
Voltage : DC 1.5V

Working Current : 0.9±15%mA

Battery: AAAA battery

\* The manual is for reference only and does not constitute a commitment of any kind.  
The manufacturer reserves the right to modify this manual, to the extent permitted by law.

\* Please use with cautious,avoiding falling, colliding, soaking, etc.



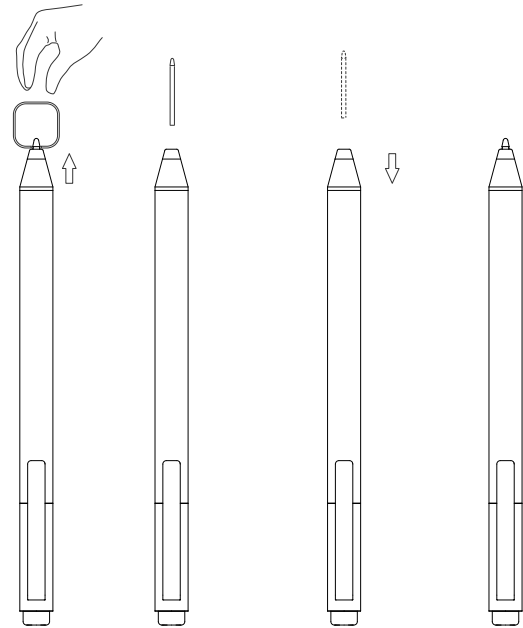
FCC ID: 2AYOTME-USI150

Product Instructions: Writing on the Laptop

### Replace the refill

\* Do not remove the refill frequently and repalce the new one when it is worn or broken.

- ① Pull the refill with the clip and pull it out.
- ② Put into the new refill and press lightly.



### Sever life

The sever life of the product is: 10 years

## Security Information

To ensure the best performance of the equipment and avoid dangerous or illegal conditions, please read and follow the following safety information.

- Please use the battery approved by the device manufacturer and supplied with this model.
- The equipment should be stored in -10~50 °C and 10%~90% RH, should be used in 5~35 °C and 20%~80% RH.
- The equipment should be stored in clean, cool and dry room, should avoid direct sunlight, avoid contact with corrosive substances.
- If the battery leakage, do not let the skin or eye contact to the leakage of liquid. If inadvertent contact, please rinse with clean water immediately, and go to the hospital for medical treatment.
- If a battery is in use, charging or preservation process have discoloration, deformation, abnormal heating and other anomalies, please stop using and replace the new battery.
- The provisions of this equipment, please handle the battery and other accessories according to local, cannot use them as garbage disposal. If the battery is not handled properly, it may cause the battery to explode.
- Do not use the equipment in the gray, damp, dirty place, in order to avoid circuit faults caused by internal equipment.
- Do not let children or pets biting equipment or accessories, lest cause damage or lead to equipment failure.
- The equipment and accessories contain small parts, please send the equipment and accessories in the reach of infants. Infants may unintentionally swallow small parts and cause asphyxiation or other dangers.
- Please keep the drying equipment and accessories. Do not use a microwave oven or a blower and other external heating equipment to dry it.
- Please do not make the equipment and accessories are falling, extrusion or a strong impact, so as not to damage the equipment and accessories, lead to equipment failure.
- Do not use harsh chemicals, cleaning agent or detergent cleaning equipment or accessories. Please use a clean, dry soft cloth to wipe the equipment or its accessories.
- Do not disassemble or refit equipment and accessories, otherwise the equipment and accessories will not be in the scope of free warranty, equipment failure please contact an authorized service center.

## Warranty Service

1. The product comes with a warranty against defect in materials and workmanship under normal use for a term of 12 months beginning from the date of delivery of the product.
2. This warranty dose not apply and the authorized service center will charge the repair reasonably if the customer or accessory is:
  - i. damaged by Man-made;
  - ii. no warranty card and valid invoice, or the warranty period has been exceeded;
  - iii. the warranty card does not match the product model designation, or has been altered;
  - iv. damaged by failure to use, maintained product as instructions;
  - v. disassembly and repair of products without authorize , or immersion in water or damage to products;
  - vi. other force majeure such as earthquakes, floods, etc.

## Warranty Card

Product model:	Dealer number:
Date of purchase:	Stamp of dealer:
username:	
contact number:	

## FCC Statement

"This equipment has been tested and found to comply with the limits for a Class B digital device, pursuant to part 15 of the FCC Rules. These limits are designed to provide reasonable protection against harmful interference in a residential installation. This equipment generates, uses and can radiate radio frequency energy and, if not installed and used in accordance with the instructions, may cause harmful interference to radio communications. However, there is no guarantee that interference will not occur in a particular installation. If this equipment does cause harmful interference to radio or television reception, which can be determined by turning the equipment off and on, the user is encouraged to try to correct the interference by one or more of the following measures:

- Reorient or relocate the receiving antenna.
- Increase the separation between the equipment and receiver.
- Connect the equipment into an outlet on a circuit different from that to which the receiver is connected.
- Consult the dealer or an experienced radio/TV technician for help."

This device complies with Part 15 of the FCC Rules. Operation is subject to the following two conditions: (1) this device may not cause harmful interference, and (2) this device must accept any interference received, including interference that may cause undesired operation.

changes or modifications not expressly approved by the party responsible for compliance could void the user's authority to operate the equipment.