

TEST REPORT

Applicant: SPIRIT LLC

Address of Applicant: 1400 NW 159TH ST, BAY 101 MIAMI GARDENS, FL 33169, MIAMI, Florida, USA

Manufacturer: Dongguan Yuankang Electronic CO., Ltd.

Address of Manufacturer: No.11 Factory Building, Sanjiang Industrial Park, Hengli Town, Dongguan City, Guangdong Province, 523460, China

Equipment Under Test (EUT)

Product Name: Radio

Model No.: MRX2, MRX200, MRX200N, MRX300, MRX300N

Trade Mark: N/A

FCC ID: 2AYOQ-MRX2

Applicable standards: FCC CFR Title 47 Part 15 Subpart C Section 15.249

Date of sample receipt: Dec.14, 2020

Date of Test: Dec.14, 2020 ~ Dec.23, 2020

Date of report issued: Jan 22, 2021

Test Result : PASS*

* In the configuration tested, the EUT complied with the standards specified above.

Authorized Signature:



Robinson Luo

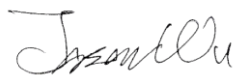
Laboratory Manager

This results shown in this test report refer only to the sample(s) tested, this test report cannot be reproduced, except in full, without prior written permission of the company. The report would be invalid without specific stamp of test institute and the signatures of compiler and approver.

2 Version

Report	Version No.	Date	Description
GTSL202012000189F01	00	Dec 24, 2020	Original
GTSL202101000184F01	01	Jan 22, 2021	Change Applicant, Manufacturer and model number

Prepared By:

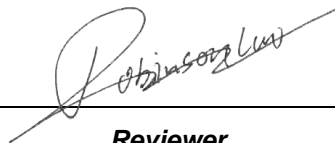


Date:

Jan 22, 2021

Project Engineer

Check By:



Date:

Jan 22, 2021

Reviewer

3 Contents

	Page
1 COVER PAGE.....	1
2 VERSION.....	2
3 CONTENTS.....	3
4 TEST SUMMARY.....	4
4.1 MEASUREMENT UNCERTAINTY.....	4
5 GENERAL INFORMATION.....	5
5.1 GENERAL DESCRIPTION OF EUT.....	5
5.2 TEST MODE.....	8
5.3 DESCRIPTION OF SUPPORT UNITS.....	8
5.4 DEVIATION FROM STANDARDS.....	8
5.5 ABNORMALITIES FROM STANDARD CONDITIONS.....	8
5.6 TEST FACILITY.....	9
5.7 TEST LOCATION.....	9
5.8 ADDITIONAL INSTRUCTIONS.....	9
6 TEST INSTRUMENTS LIST.....	10
7 TEST RESULTS AND MEASUREMENT DATA.....	12
7.1 ANTENNA REQUIREMENT.....	12
7.2 CONDUCTED EMISSIONS.....	13
7.3 RADIATED EMISSION METHOD.....	14
7.3.1 <i>Field Strength of The Fundamental Signal</i>	16
7.3.2 <i>Spurious emissions</i>	18
7.3.3 <i>Bandedge emissions</i>	26
7.4 20dB OCCUPY BANDWIDTH.....	29
8 TEST SETUP PHOTO.....	33
9 EUT CONSTRUCTIONAL DETAILS.....	34

4 Test Summary

Test Item	Section in CFR 47	Result
Antenna requirement	15.203	Pass
AC Power Line Conducted Emission	15.207	N/A
Field strength of the fundamental signal	15.249 (a)	Pass
Spurious emissions	15.249 (a) (d)/15.209	Pass
Band edge	15.249 (d)/15.205	Pass
20dB Occupied Bandwidth	15.215 (c)	Pass

Pass: The EUT complies with the essential requirements in the standard.

Remark: Test according to ANSI C63.10:2013.

4.1 Measurement Uncertainty

Test Item	Frequency Range	Measurement Uncertainty	Notes
Radiated Emission	30MHz-200MHz	3.8039dB	(1)
Radiated Emission	200MHz-1GHz	3.9679dB	(1)
Radiated Emission	1GHz-18GHz	4.29dB	(1)
Radiated Emission	18GHz-40GHz	3.30dB	(1)
AC Power Line Conducted Emission	0.15MHz ~ 30MHz	3.44dB	(1)

Note (1): The measurement uncertainty is for coverage factor of k=2 and a level of confidence of 95%.

5 General Information

5.1 General Description of EUT

Product Name:	Radio
Model No.:	MRX2, MRX200, MRX200N, MRX300, MRX300N
Test Model No.:	MRX2
Model difference:	All above models are identical in the same PCB layout, interior structure and electrical circuits. The only difference is model name for commercial purpose.
Serial No.:	N/A
BT 5.0 BR+EDR	
Hardware Version:	V1.1
Software Version:	V1.0
Test sample(s) ID:	GTSL202012000189-1
Sample(s) Status	Engineered sample
Operation Frequency:	2402MHz~2480MHz
Channel numbers:	79
Channel separation:	1MHz
Modulation type:	GFSK, $\pi/4$ -DQPSK, 8-DPSK
Antenna Type:	PCB Antenna
Antenna gain:	0 dBi(declare by applicant)
BT 5.0 BLE	
Hardware Version:	V1.1
Software Version:	V1.0
Sample(s) Status	Engineered sample
Operation Frequency:	2402MHz~2480MHz
Channel numbers:	40
Channel separation:	2MHz
Modulation type:	GFSK
Antenna Type:	PCB Antenna
Antenna gain:	0 dBi(declare by applicant)
Power supply:	DC 12V battery
Remark:	The data in this report comes from the original report GTSL202012000189F01, only the applicant and model information are changed, and the rest remain unchanged.

BR+EDR

Operation Frequency each of channel							
Channel	Frequency	Channel	Frequency	Channel	Frequency	Channel	Frequency
1	2402 MHz	21	2422 MHz	41	2442 MHz	61	2462 MHz
2	2403 MHz	22	2423 MHz	42	2443 MHz	62	2463 MHz
3	2404 MHz	23	2424 MHz	43	2444 MHz	63	2464 MHz
4	2405 MHz	24	2425 MHz	44	2445 MHz	64	2465 MHz
5	2406 MHz	25	2426 MHz	45	2446 MHz	65	2466 MHz
6	2407 MHz	26	2427 MHz	46	2447 MHz	66	2467 MHz
7	2408 MHz	27	2428 MHz	47	2448 MHz	67	2468MHz
8	2409 MHz	28	2429 MHz	48	2449 MHz	68	2469 MHz
9	2410 MHz	29	2430 MHz	49	2450 MHz	69	2470 MHz
10	2411 MHz	30	2431MHz	50	2451 MHz	70	2471 MHz
11	2412 MHz	31	2432 MHz	51	2452 MHz	71	2472 MHz
12	2413 MHz	32	2433 MHz	52	2453 MHz	72	2473 MHz
13	2414 MHz	33	2434 MHz	53	2454 MHz	73	2474 MHz
14	2415 MHz	34	2435 MHz	54	2455 MHz	74	2475 MHz
15	2416 MHz	35	2436 MHz	55	2456 MHz	75	2476 MHz
16	2417 MHz	36	2437 MHz	56	2457 MHz	76	2477 MHz
17	2418 MHz	37	2438 MHz	57	2458 MHz	77	2478 MHz
18	2419 MHz	38	2439 MHz	58	2459 MHz	78	2479 MHz
19	2420 MHz	39	2440 MHz	59	2460 MHz	79	2480 MHz
20	2421 MHz	40	2441 MHz	60	2461 MHz		

BLE

Operation Frequency each of channel							
Channel	Frequency	Channel	Frequency	Channel	Frequency	Channel	Frequency
1	2402 MHz	11	2422 MHz	21	2442 MHz	31	2462 MHz
2	2404 MHz	12	2424 MHz	22	2444 MHz	32	2464 MHz
3	2406 MHz	13	2426 MHz	23	2446 MHz	33	2466 MHz
4	2408 MHz	14	2428 MHz	24	2448 MHz	34	2468 MHz
5	2410 MHz	15	2430 MHz	25	2450 MHz	35	2470 MHz
6	2412 MHz	16	2432 MHz	26	2452 MHz	36	2472 MHz
7	2414 MHz	17	2434 MHz	27	2454 MHz	37	2474 MHz
8	2416 MHz	18	2436 MHz	28	2456 MHz	38	2476 MHz
9	2418 MHz	19	2438 MHz	29	2458 MHz	39	2478 MHz
10	2420 MHz	20	2440 MHz	30	2460 MHz	40	2480 MHz

Note:

In section 15.31(m), regards to the operating frequency range over 10 MHz, the Lowest frequency, the middle frequency, and the highest frequency of channel were selected to perform the test, and the selected channel see below:

BT 5.0 BR+EDR	
Channel	Frequency
The lowest channel	2402MHz
The middle channel	2441MHz
The Highest channel	2480MHz

BT 5.0 BLE	
Channel	Frequency
The lowest channel	2402MHz
The middle channel	2440MHz
The Highest channel	2480MHz

5.2 Test mode

Transmitting mode	Keep the EUT in continuously transmitting mode.		
<i>Remark: During the test, the dutycycle >98%, the test voltage was tuned from 85% to 115% of the nominal rated supply voltage, and found that the worst case was under the nominal rated supply condition. So the report just shows that condition's data.</i>			
Pre-test mode.(BR+EDR)			
We have verified the construction and function in typical operation, The EUT was placed on three different polar directions; i.e. X axis, Y axis, Z axis. which was shown in this test report and defined as follows:			
Axis	X	Y	Z
Field Strength(dBuV/m)	92.86	94.51	93.01
Final Test Mode:			
The EUT was tested in GFSK, $\pi/4$ -DQPSK, 8-DPSK modulation, and found the GFSK modulation is the worst case. According to ANSI C63.10 standards, the test results are both the "worst case" and "worst setup": Y axis (see the test setup photo)			

Pre-test mode.(BLE)			
We have verified the construction and function in typical operation, The EUT was placed on three different polar directions; i.e. X axis, Y axis, Z axis. which was shown in this test report and defined as follows:			
Axis	X	Y	Z
Field Strength(dBuV/m)	91.25	94.02	92.65
Final Test Mode:			
According to ANSI C63.10 standards, the test results are both the "worst case" and "worst setup": Y axis (see the test setup photo)			

5.3 Description of Support Units

Manufacturer	Description	Model	Serial Number
Apple adapter	USB Charger	A1443	N/A

5.4 Deviation from Standards

None.

5.5 Abnormalities from Standard Conditions

None.

5.6 Test Facility

The test facility is recognized, certified, or accredited by the following organizations:

- **FCC —Registration No.: 381383**

Global United Technology Services Co., Ltd., Shenzhen EMC Laboratory has been registered and fully described in a report filed with the (FCC) Federal Communications Commission. The acceptance letter from the FCC is maintained in files. Registration 381383.

- **IC —Registration No.: 9079A**

The 3m Semi-anechoic chamber of Global United Technology Services Co., Ltd. has been registered by Certification and Engineering Bureau of Industry Canada for radio equipment testing with Registration No.: 9079A

- **NVLAP (LAB CODE:600179-0)**

Global United Technology Services Co., Ltd., is accredited by the National Voluntary Laboratory Accreditation Program (NVLAP). LAB CODE:600179-0

5.7 Test Location

All tests were performed at:

Global United Technology Services Co., Ltd.

No. 123-128, Tower A, Jinyuan Business Building, No.2, Laodong Industrial Zone, Xixiang Road, Baoan District, Shenzhen, Guangdong, China 518102

Tel: 0755-27798480

Fax: 0755-27798960

5.8 Additional Instructions

Test Software	Special test command provided by manufacturer
Power level setup	Default

6 Test Instruments list

Radiated Emission:						
Item	Test Equipment	Manufacturer	Model No.	Inventory No.	Cal.Date (mm-dd-yy)	Cal.Due date (mm-dd-yy)
1	3m Semi- Anechoic Chamber	ZhongYu Electron	9.2(L)*6.2(W)* 6.4(H)	GTS250	July. 02 2020	July. 01 2025
2	Control Room	ZhongYu Electron	6.2(L)*2.5(W)* 2.4(H)	GTS251	N/A	N/A
3	EMI Test Receiver	Rohde & Schwarz	ESU26	GTS203	June. 25 2020	June. 24 2021
4	BiConiLog Antenna	SCHWARZBECK MESS-ELEKTRONIK	VULB9163	GTS214	June. 25 2020	June. 24 2021
5	Double -ridged waveguide horn	SCHWARZBECK MESS-ELEKTRONIK	BBHA 9120 D	GTS208	June. 25 2020	June. 24 2021
6	Horn Antenna	ETS-LINDGREN	3160	GTS217	June. 25 2020	June. 24 2021
7	EMI Test Software	AUDIX	E3	N/A	N/A	N/A
8	Coaxial Cable	GTS	N/A	GTS213	June. 25 2020	June. 24 2021
9	Coaxial Cable	GTS	N/A	GTS211	June. 25 2020	June. 24 2021
10	Coaxial cable	GTS	N/A	GTS210	June. 25 2020	June. 24 2021
11	Coaxial Cable	GTS	N/A	GTS212	June. 25 2020	June. 24 2021
12	Amplifier(100kHz-3GHz)	HP	8347A	GTS204	June. 25 2020	June. 24 2021
13	Amplifier(2GHz-20GHz)	HP	84722A	GTS206	June. 25 2020	June. 24 2021
14	Amplifier (18-26GHz)	Rohde & Schwarz	AFS33-18002 650-30-8P-44	GTS218	June. 25 2020	June. 24 2021
15	Band filter	Amindeon	82346	GTS219	June. 25 2020	June. 24 2021
16	Power Meter	Anritsu	ML2495A	GTS540	June. 25 2020	June. 24 2021
17	Power Sensor	Anritsu	MA2411B	GTS541	June. 25 2020	June. 24 2021
18	Wideband Radio Communication Tester	Rohde & Schwarz	CMW500	GTS575	June. 25 2020	June. 24 2021
19	Splitter	Agilent	11636B	GTS237	June. 25 2020	June. 24 2021
20	Loop Antenna	ZHINAN	ZN30900A	GTS534	June. 25 2020	June. 24 2021
21	Breitband hornantenne	SCHWARZBECK	BBHA 9170	GTS579	Oct. 18 2020	Oct. 17 2021
22	Amplifier	TDK	PA-02-02	GTS574	Oct. 18 2020	Oct. 17 2021
23	Amplifier	TDK	PA-02-03	GTS576	Oct. 18 2020	Oct. 17 2021
24	PSA Series Spectrum Analyzer	Rohde & Schwarz	FSP	GTS578	June. 25 2020	June. 24 2021

Conducted Emission						
Item	Test Equipment	Manufacturer	Model No.	Inventory No.	Cal.Date (mm-dd-yy)	Cal.Due date (mm-dd-yy)
1	Shielding Room	ZhongYu Electron	7.3(L)x3.1(W)x2.9(H)	GTS252	May.15 2019	May.14 2022
2	EMI Test Receiver	R&S	ESCI 7	GTS552	June. 25 2020	June. 24 2021
3	Coaxial Switch	ANRITSU CORP	MP59B	GTS225	June. 25 2020	June. 24 2021
4	ENV216 2-L-V-NETZNACHB.DE	ROHDE&SCHWARZ	ENV216	GTS226	June. 25 2020	June. 24 2021
5	Coaxial Cable	GTS	N/A	GTS227	N/A	N/A
6	EMI Test Software	AUDIX	E3	N/A	N/A	N/A
7	Thermo meter	KTJ	TA328	GTS233	June. 25 2020	June. 24 2021
8	Absorbing clamp	Elektronik-Feinmechanik	MDS21	GTS229	June. 25 2020	June. 24 2021
9	ISN	SCHWARZBECK	NTFM 8158	GTD565	June. 25 2020	June. 24 2021

RF Conducted Test:						
Item	Test Equipment	Manufacturer	Model No.	Serial No.	Cal.Date (mm-dd-yy)	Cal.Due date (mm-dd-yy)
1	MXA Signal Analyzer	Agilent	N9020A	GTS566	June. 25 2020	June. 24 2021
2	EMI Test Receiver	R&S	ESCI 7	GTS552	June. 25 2020	June. 24 2021
3	Spectrum Analyzer	Agilent	E4440A	GTS533	June. 25 2020	June. 24 2021
4	MXG vector Signal Generator	Agilent	N5182A	GTS567	June. 25 2020	June. 24 2021
5	ESG Analog Signal Generator	Agilent	E4428C	GTS568	June. 25 2020	June. 24 2021
6	USB RF Power Sensor	DARE	RPR3006W	GTS569	June. 25 2020	June. 24 2021
7	RF Switch Box	Shongyi	RFSW3003328	GTS571	June. 25 2020	June. 24 2021
8	Programmable Constant Temp & Humi Test Chamber	WEWON	WHTH-150L-40-880	GTS572	June. 25 2020	June. 24 2021

General used equipment:						
Item	Test Equipment	Manufacturer	Model No.	Inventory No.	Cal.Date (mm-dd-yy)	Cal.Due date (mm-dd-yy)
1	Humidity/ Temperature Indicator	KTJ	TA328	GTS243	June. 25 2020	June. 24 2021
2	Barometer	ChangChun	DYM3	GTS255	June. 25 2020	June. 24 2021

7 Test results and Measurement Data

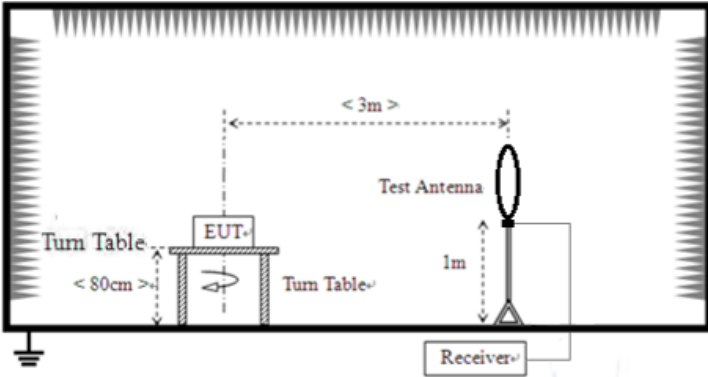
7.1 Antenna requirement

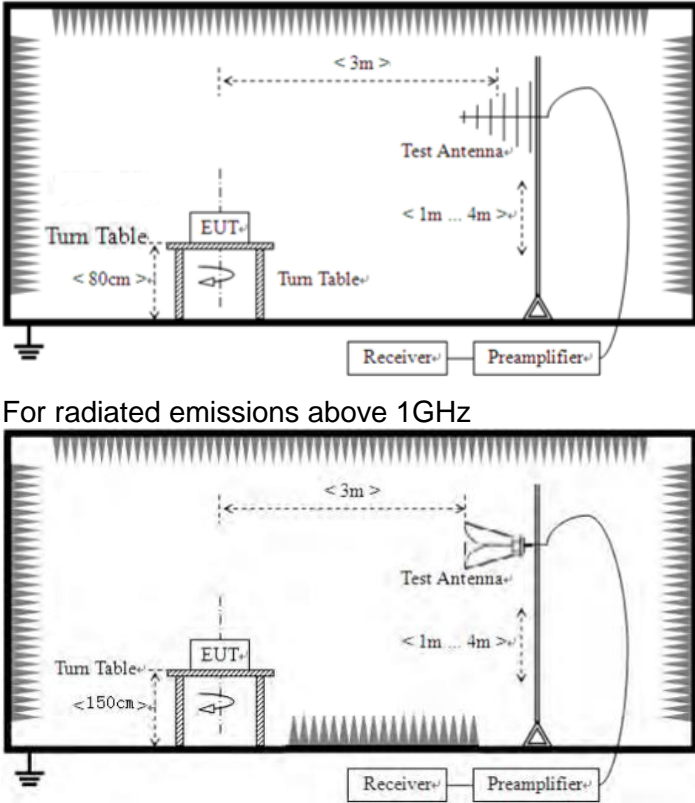
Standard requirement:	FCC Part15 C Section 15.203
<p>15.203 requirement: An intentional radiator shall be designed to ensure that no antenna other than that furnished by the responsible party shall be used with the device. The use of a permanently attached antenna or of an antenna that uses a unique coupling to the intentional radiator, the manufacturer may design the unit so that a broken antenna can be replaced by the user, but the use of a standard antenna jack or electrical connector is prohibited.</p> <p>15.247(c) (1)(i) requirement: (i) Systems operating in the 2400-2483.5 MHz band that is used exclusively for fixed. Point-to-point operations may employ transmitting antennas with directional gain greater than 6dBi provided the maximum conducted output power of the intentional radiator is reduced by 1 dB for every 3 dB that the directional gain of the antenna exceeds 6dBi.</p>	
EUT Antenna:	
<p><i>The antenna is PCB antenna, the best case gain of the antenna is 0dBi, reference to the appendix II for details.</i></p>	

7.2 Conducted Emissions

Test Requirement:	FCC Part15 C Section 15.207&15.249					
Test Method:	ANSI C63.10:2013					
Test Frequency Range:	150KHz to 30MHz					
Class / Severity:	Class B					
Receiver setup:	RBW=9KHz, VBW=30KHz, Sweep time=auto					
Limit:	Frequency range (MHz)		Limit (dBuV)			
			Quasi-peak		Average	
	0.15-0.5		66 to 56*		56 to 46*	
	0.5-5		56		46	
	5-30		60		50	
* Decreases with the logarithm of the frequency.						
Test setup:	<p><i>Remark</i> E.U.T: Equipment Under Test LISN: Line Impedance Stabilization Network Test table height=0.8m</p>					
Test procedure:	<ol style="list-style-type: none"> 1. The EUT and simulators are connected to the main power through a line impedance stabilization network (L.I.S.N.). This provides a 50ohm/50uH coupling impedance for the measuring equipment. 2. The peripheral devices are also connected to the main power through a LISN that provides a 50ohm/50uH coupling impedance with 50ohm termination. (Please refer to the block diagram of the test setup and photographs). 3. Both sides of A.C. line are checked for maximum conducted interference. In order to find the maximum emission, the relative positions of equipment and all of the interface cables must be changed according to ANSI C63.10: 2013 on conducted measurement. 					
Test Instruments:	Refer to section 6.0 for details					
Test mode:	Refer to section 5.2 for details					
Test environment:	Temp.:	25 °C	Humid.:	52%	Press.:	1012mbar
Test voltage:	N/A					
Test results:	N/A					

7.3 Radiated Emission Method

Test Requirement:	FCC Part15 C Section 15.209&15.249				
Test Method:	ANSI C63.10:2013				
Test Frequency Range:	9kHz to 25GHz				
Test site:	Measurement Distance: 3m				
Receiver setup:	Frequency	Detector	RBW	VBW	Remark
	9kHz-150kHz	Quasi-peak	200Hz	300Hz	Quasi-peak Value
	150kHz-30MHz	Quasi-peak	9kHz	10kHz	Quasi-peak Value
	30MHz-1GHz	Quasi-peak	120KHz	300KHz	Quasi-peak Value
	Above 1GHz	Peak	1MHz	3MHz	Peak Value
Peak		1MHz	10Hz	Average Value	
Limit: (Field strength of the fundamental signal)	Frequency	Limit (dBuV/m @3m)		Remark	
	2400MHz-2483.5MHz	94.00		Average Value	
		114.00		Peak Value	
Limit: (Spurious Emissions)	Frequency	Limit (uV/m)		Remark	
	0.009MHz-0.490MHz	2400/F(kHz) @300m		Quasi-peak Value	
	0.490MHz-1.705MHz	24000/F(kHz) @30m		Quasi-peak Value	
	1.705MHz-30.0MHz	30 @30m		Quasi-peak Value	
	30MHz-88MHz	100 @3m		Quasi-peak Value	
	88MHz-216MHz	150 @3m		Quasi-peak Value	
	216MHz-960MHz	200 @3m		Quasi-peak Value	
	960MHz-1GHz	500 @3m		Quasi-peak Value	
	Above 1GHz	500 @3m		Average Value	
5000 @3m		Peak Value			
Limit: (band edge)	Emissions radiated outside of the specified frequency bands, except for harmonics, shall be attenuated by at least 50 dB below the level of the fundamental or to the general radiated emission limits in Section 15.209, whichever is the lesser attenuation.				
Test setup:	<p>For radiated emissions from 9kHz to 30MHz</p>  <p>For radiated emissions from 30MHz to 1GHz</p>				

	 <p>For radiated emissions above 1GHz</p>						
<p>Test Procedure:</p>	<ol style="list-style-type: none"> 1. The EUT was placed on the top of a rotating table (0.8m for below 1GHz and 1.5 meters for above 1GHz) above the ground at a 3 meter camber. The table was rotated 360 degrees to determine the position of the highest radiation. 2. The EUT was set 3 meters away from the interference-receiving antenna, which was mounted on the top of a variable-height antenna tower. 3. The antenna height is varied from one meter to four meters above the ground to determine the maximum value of the field strength. Both horizontal and vertical polarizations of the antenna are set to make the measurement. 4. For each suspected emission, the EUT was arranged to its worst case and then the antenna was tuned to heights from 1 meter to 4 meters and the rota table was turned from 0 degrees to 360 degrees to find the maximum reading. 5. The test-receiver system was set to Peak Detect Function and Specified Bandwidth with Maximum Hold Mode. 6. If the emission level of the EUT in peak mode was 10dB lower than the limit specified, then testing could be stopped and the peak values of the EUT would be reported. Otherwise the emissions that did not have 10dB margin would be re-tested one by one using peak, quasi-peak or average method as specified and then reported in a data sheet. 						
<p>Test Instruments:</p>	<p>Refer to section 6.0 for details</p>						
<p>Test mode:</p>	<p>Refer to section 5.2 for details</p>						
<p>Test environment:</p>	<table border="1"> <tr> <td>Temp.:</td> <td>25 °C</td> <td>Humid.:</td> <td>52%</td> <td>Press.:</td> <td>1012mbar</td> </tr> </table>	Temp.:	25 °C	Humid.:	52%	Press.:	1012mbar
Temp.:	25 °C	Humid.:	52%	Press.:	1012mbar		
<p>Test voltage:</p>	<p>DC 12V battery</p>						
<p>Test results:</p>	<p>Pass</p>						

Measurement data:

7.3.1 Field Strength of The Fundamental Signal

Note: The EUT was tested in GFSK, $\pi/4$ -DQPSK and 8-DPSK modulation, and found the GFSK modulation is the worst case, the test results are both the "worst case" and "worst setup".

Peak value: BR+EDR

Frequency (MHz)	Read Level (dBuV)	Antenna Factor (dB/m)	Cable Loss (dB)	Preamp Factor (dB)	Level (dBuV/m)	Limit Line (dBuV/m)	Over Limit (dB)	polarization
2402	101.37	22.55	3.25	33.45	93.72	114	-20.28	Vertical
2402	100.86	22.55	3.25	33.45	93.21	114	-20.79	Horizontal
2441	101.25	23.05	3.36	33.15	94.51	114	-19.49	Vertical
2441	100.31	23.05	3.36	33.15	93.57	114	-20.43	Horizontal
2480	100.94	23.57	3.67	33.68	94.50	114	-19.50	Vertical
2480	100.29	23.57	3.67	33.68	93.85	114	-20.15	Horizontal

Average value: BR+EDR

Frequency (MHz)	Read Level (dBuV)	Antenna Factor (dB/m)	Cable Loss (dB)	Preamp Factor (dB)	Level (dBuV/m)	Limit Line (dBuV/m)	Over Limit (dB)	polarization
2402	84.36	22.55	3.25	33.45	76.71	94	-17.29	Vertical
2402	83.28	22.55	3.25	33.45	75.63	94	-18.37	Horizontal
2441	84.92	23.05	3.36	33.15	78.18	94	-15.82	Vertical
2441	83.47	23.05	3.36	33.15	76.73	94	-17.27	Horizontal
2480	82.58	23.57	3.67	33.68	76.14	94	-17.86	Vertical
2480	83.49	23.57	3.67	33.68	77.05	94	-16.95	Horizontal

Peak value: BLE

Frequency (MHz)	Read Level (dBuV)	Antenna Factor (dB/m)	Cable Loss (dB)	Preamp Factor (dB)	Level (dBuV/m)	Limit Line (dBuV/m)	Over Limit (dB)	polarization
2402	101.49	22.55	3.25	33.45	93.84	114	-20.16	Vertical
2402	100.82	22.55	3.25	33.45	93.17	114	-20.83	Horizontal
2440	100.57	23.05	3.36	33.15	93.83	114	-20.17	Vertical
2440	99.86	23.05	3.36	33.15	93.12	114	-20.88	Horizontal
2480	100.46	23.57	3.67	33.68	94.02	114	-19.98	Vertical
2480	99.83	23.57	3.67	33.68	93.39	114	-20.61	Horizontal

Average value: BLE

Frequency (MHz)	Read Level (dBuV)	Antenna Factor (dB/m)	Cable Loss (dB)	Preamp Factor (dB)	Level (dBuV/m)	Limit Line (dBuV/m)	Over Limit (dB)	polarization
2402	83.52	22.55	3.25	33.45	75.87	94	-18.13	Vertical
2402	82.14	22.55	3.25	33.45	74.49	94	-19.51	Horizontal
2440	83.75	23.05	3.36	33.15	77.01	94	-16.99	Vertical
2440	83.47	23.05	3.36	33.15	76.73	94	-17.27	Horizontal
2480	81.47	23.57	3.67	33.68	75.03	94	-18.97	Vertical
2480	82.53	23.57	3.67	33.68	76.09	94	-17.91	Horizontal

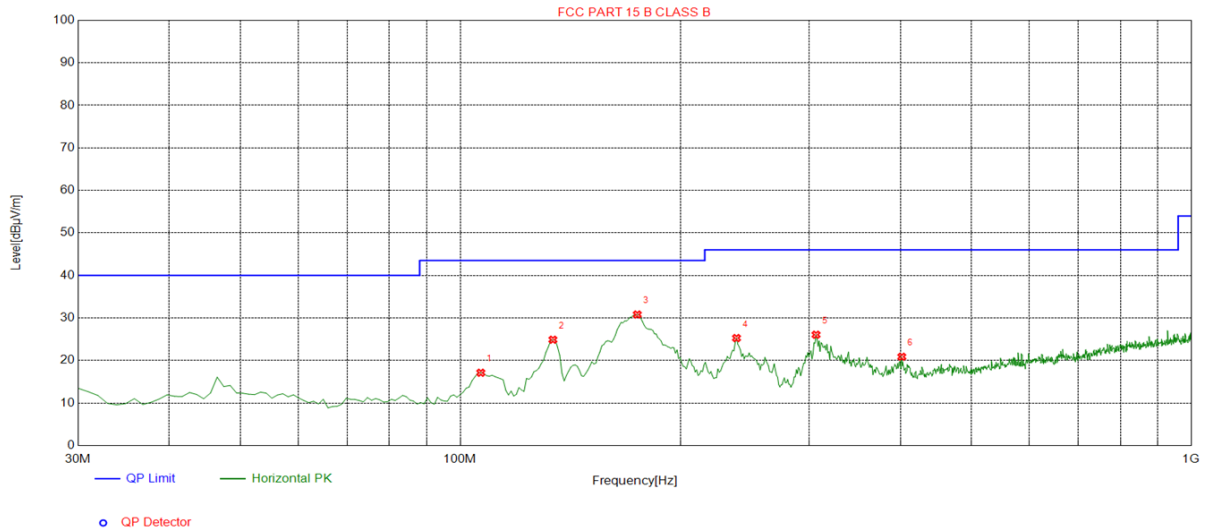
7.3.2 Spurious emissions

■ Below 30MHz

The emission from 9 kHz to 30MHz was pre-tested and found the result was 20dB lower than the limit, and according to 15.31(o), the test result no need to reported.

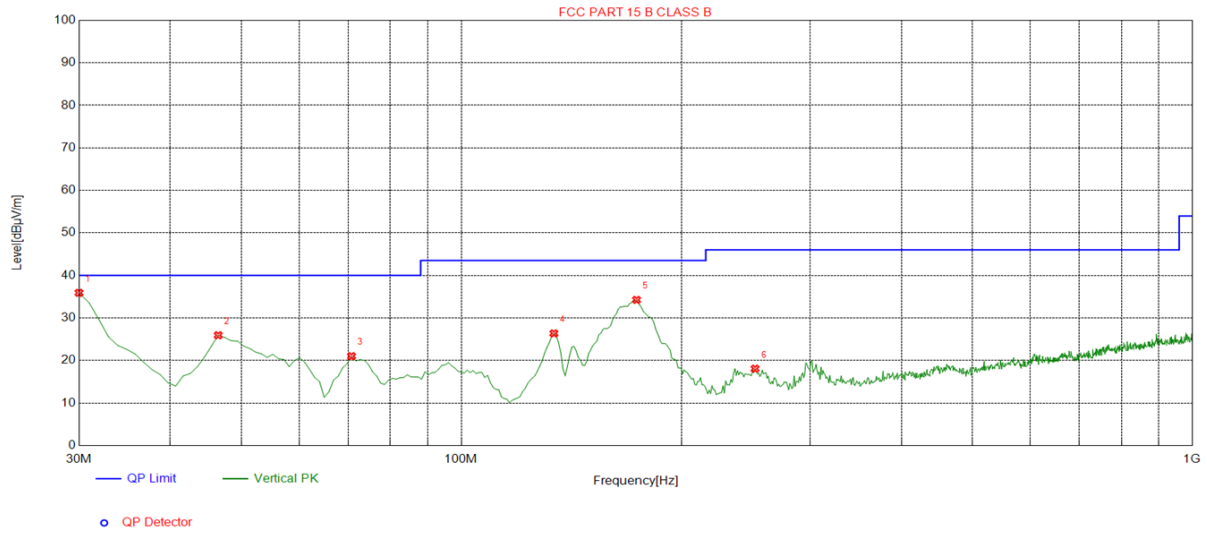
■ Below 1GHz

Horizontal:



Suspected List									
NO.	Freq. [MHz]	Factor [dB]	Reading [dBμV/m]	Level [dBμV/m]	Limit [dBμV/m]	Margin [dB]	Height [cm]	Angle [°]	Polarity
1	106.7067	-15.42	32.53	17.11	43.50	26.39	100	213	Horizontal
2	133.8939	-18.81	43.69	24.88	43.50	18.62	100	271	Horizontal
3	174.6747	-17.09	47.89	30.80	43.50	12.70	100	290	Horizontal
4	238.7588	-13.91	39.18	25.27	46.00	20.73	100	290	Horizontal
5	306.7267	-12.65	38.70	26.05	46.00	19.95	100	114	Horizontal
6	401.8819	-10.37	31.24	20.87	46.00	25.13	100	67	Horizontal

Vertical:



Suspected List									
NO.	Freq. [MHz]	Factor [dB]	Reading [dBµV/m]	Level [dBµV/m]	Limit [dBµV/m]	Margin [dB]	Height [cm]	Angle [°]	Polarity
1	30.0000	-16.34	52.25	35.91	40.00	4.09	100	360	Vertical
2	46.5065	-13.65	39.58	25.93	40.00	14.07	100	340	Vertical
3	70.7808	-17.81	38.81	21.00	40.00	19.00	100	120	Vertical
4	133.8939	-18.81	45.17	26.36	43.50	17.14	100	222	Vertical
5	173.7037	-17.14	51.39	34.25	43.50	9.25	100	203	Vertical
6	252.3524	-13.42	31.49	18.07	46.00	27.93	100	12	Vertical

BR+EDR

■ Above 1GHz

Note: The EUT was tested in GFSK, $\pi/4$ -DQPSK and 8-DPSK modulation, and found the GFSK modulation is the worst case, the test results are both the “worst case” and “worst setup”.

Test channel:	Lowest channel
---------------	----------------

Peak value:

Frequency (MHz)	Read Level (dBuV)	Antenna Factor (dB/m)	Cable Loss (dB)	Preamp Factor (dB)	Level (dBuV/m)	Limit Line (dBuV/m)	Over Limit (dB)	polarization
4804	58.46	21.52	3.52	33.12	50.38	74	-23.62	Vertical
7206	54.26	23.65	4.56	33.08	49.39	74	-24.61	Vertical
9608	53.45	25.58	6.15	33.57	51.61	74	-22.39	Vertical
12010	51.34	27.68	6.98	33.26	52.74	74	-21.26	Vertical
14412	*	*	*	*	*	*	*	Vertical
4804	57.69	21.52	3.52	33.12	49.61	74	-24.39	Horizontal
7206	53.47	23.65	4.56	33.08	48.6	74	-25.4	Horizontal
9608	51.16	25.58	6.15	33.57	49.32	74	-24.68	Horizontal
12010	49.52	27.68	6.98	33.26	50.92	74	-23.08	Horizontal
14412	*	*	*	*	*	*	*	Horizontal

Average value:

Frequency (MHz)	Read Level (dBuV)	Antenna Factor (dB/m)	Cable Loss (dB)	Preamp Factor (dB)	Level (dBuV/m)	Limit Line (dBuV/m)	Over Limit (dB)	polarization
4804	45.37	21.52	3.52	33.12	37.29	54	-16.71	Vertical
7206	43.28	23.65	4.56	33.08	38.41	54	-15.59	Vertical
9608	39.47	25.58	6.15	33.57	37.63	54	-16.37	Vertical
12010	36.83	27.68	6.98	33.26	38.23	54	-15.77	Vertical
14412	*	*	*	*	*	*	*	Vertical
4804	44.29	21.52	3.52	33.12	36.21	54	-17.79	Horizontal
7206	42.87	23.65	4.56	33.08	38.00	54	-16.00	Horizontal
9608	40.13	25.58	6.15	33.57	38.29	54	-15.71	Horizontal
12010	35.46	27.68	6.98	33.26	36.86	54	-17.14	Horizontal
14412	*	*	*	*	*	*	*	Horizontal

Remark:

1. Final Level = Receiver Read level + Antenna Factor + Cable Loss – Preamplifier Factor
2. The emission levels of other frequencies are very lower than the limit and not show in test report.
3. “*”, means this data is the too weak instrument of signal is unable to test.

BR+EDR

Test channel:	Middle channel
---------------	----------------

Peak value:

Frequency (MHz)	Read Level (dBuV)	Antenna Factor (dB/m)	Cable Loss (dB)	Preamp Factor (dB)	Level (dBuV/m)	Limit Line (dBuV/m)	Over Limit (dB)	polarization
4882	58.27	21.78	3.58	33.27	50.36	74	-23.64	Vertical
7323	55.36	24.15	4.57	33.87	50.21	74	-23.79	Vertical
9766	52.84	26.04	6.24	33.19	51.93	74	-22.07	Vertical
12205	50.33	27.98	7.18	33.68	51.81	74	-22.19	Vertical
14646	*	*	*	*	*	*	*	Vertical
4882	57.48	21.78	3.58	33.27	49.57	74	-24.43	Horizontal
7323	54.39	24.15	4.57	33.87	49.24	74	-24.76	Horizontal
9764	50.64	26.04	6.24	33.19	49.73	74	-24.27	Horizontal
12205	47.32	27.98	7.18	33.68	48.8	74	-25.2	Horizontal
14646	*	*	*	*	*	*	*	Horizontal

Average value:

Frequency (MHz)	Read Level (dBuV)	Antenna Factor (dB/m)	Cable Loss (dB)	Preamp Factor (dB)	Level (dBuV/m)	Limit Line (dBuV/m)	Over Limit (dB)	polarization
4882	44.15	21.78	3.58	33.27	36.24	54	-17.76	Vertical
7323	43.28	24.15	4.57	33.87	38.13	54	-15.87	Vertical
9766	38.64	26.04	6.24	33.19	37.73	54	-16.27	Vertical
12205	35.43	27.98	7.18	33.68	36.91	54	-17.09	Vertical
14646	*	*	*	*	*	*	*	Vertical
4882	43.29	21.78	3.58	33.27	35.38	54	-18.62	Horizontal
7323	41.57	24.15	4.57	33.87	36.42	54	-17.58	Horizontal
9764	39.64	26.04	6.24	33.19	38.73	54	-15.27	Horizontal
12205	34.53	27.98	7.18	33.68	36.01	54	-17.99	Horizontal
14646	*	*	*	*	*	*	*	Horizontal

Remark:

1. Final Level = Receiver Read level + Antenna Factor + Cable Loss – Pre-amplifier Factor
2. The emission levels of other frequencies are very lower than the limit and not show in test report.
3. “*”, means this data is the too weak instrument of signal is unable to test.

BR+EDR

Test channel:	Highest channel
---------------	-----------------

Peak value:

Frequency (MHz)	Read Level (dBuV)	Antenna Factor (dB/m)	Cable Loss (dB)	Preamp Factor (dB)	Level (dBuV/m)	Limit Line (dBuV/m)	Over Limit (dB)	polarization
4960	57.39	22.56	4.17	33.75	50.37	74	-23.63	Vertical
7440	53.47	24.78	5.36	33.17	50.44	74	-23.56	Vertical
9920	51.23	27.14	6.97	33.62	51.72	74	-22.28	Vertical
12400	49.36	28.16	7.65	33.58	51.59	74	-22.41	Vertical
14880	*	*	*	*	*	*	*	Vertical
4960	56.27	22.56	4.17	33.75	49.25	74	-24.75	Horizontal
7440	52.64	24.78	5.36	33.17	49.61	74	-24.39	Horizontal
9920	49.32	27.14	6.97	33.62	49.81	74	-24.19	Horizontal
12400	46.57	28.16	7.65	33.58	48.8	74	-25.2	Horizontal
14880	*	*	*	*	*	*	*	Horizontal

Average value:

Frequency (MHz)	Read Level (dBuV)	Antenna Factor (dB/m)	Cable Loss (dB)	Preamp Factor (dB)	Level (dBuV/m)	Limit Line (dBuV/m)	Over Limit (dB)	polarization
4960	45.18	22.56	4.17	33.75	38.16	54	-15.84	Vertical
7440	42.64	24.78	5.36	33.17	39.61	54	-14.39	Vertical
9920	39.28	27.14	6.97	33.62	39.77	54	-14.23	Vertical
12400	34.39	28.16	7.65	33.58	36.62	54	-17.38	Vertical
14880	*	*	*	*	*	*	*	Vertical
4960	44.87	22.56	4.17	33.75	37.85	54	-16.15	Horizontal
7440	40.92	24.78	5.36	33.17	37.89	54	-16.11	Horizontal
9920	38.64	27.14	6.97	33.62	39.13	54	-14.87	Horizontal
12400	35.08	28.16	7.65	33.58	37.31	54	-16.69	Horizontal
14880	*	*	*	*	*	*	*	Horizontal

Remark:

1. Final Level = Receiver Read level + Antenna Factor + Cable Loss – Preamplifier Factor
2. The emission levels of other frequencies are very lower than the limit and not show in test report.
3. “*”, means this data is the too weak instrument of signal is unable to test.

BLE

■ Above 1GHz

Test channel:	Lowest channel
---------------	----------------

Peak value:

Frequency (MHz)	Read Level (dBuV)	Antenna Factor (dB/m)	Cable Loss (dB)	Preamplifier Factor (dB)	Level (dBuV/m)	Limit Line (dBuV/m)	Over Limit (dB)	polarization
4804	57.63	21.52	3.52	33.12	49.55	74	-24.45	Vertical
7026	53.82	23.65	4.56	33.08	48.95	74	-25.05	Vertical
9608	52.47	25.58	6.15	33.57	50.63	74	-23.37	Vertical
12010	53.56	27.68	6.98	33.26	54.96	74	-19.04	Vertical
14412	*	*	*	*	*	*	*	Vertical
4804	56.39	21.52	3.52	33.12	48.31	74	-25.69	Horizontal
7026	52.43	23.65	4.56	33.08	47.56	74	-26.44	Horizontal
9608	51.36	25.58	6.15	33.57	49.52	74	-24.48	Horizontal
12010	50.18	27.68	6.98	33.26	51.58	74	-22.42	Horizontal
14412	*	*	*	*	*	*	*	Horizontal

Average value:

Frequency (MHz)	Read Level (dBuV)	Antenna Factor (dB/m)	Cable Loss (dB)	Preamplifier Factor (dB)	Level (dBuV/m)	Limit Line (dBuV/m)	Over Limit (dB)	polarization
4804	46.18	21.52	3.52	33.12	38.1	54	-15.9	Vertical
7026	44.72	23.65	4.56	33.08	39.85	54	-14.15	Vertical
9608	40.39	25.58	6.15	33.57	38.55	54	-15.45	Vertical
12010	38.43	27.68	6.98	33.26	39.83	54	-14.17	Vertical
14412	*	*	*	*	*	*	*	Vertical
4804	45.27	21.52	3.52	33.12	37.19	54	-16.81	Horizontal
7026	44.52	23.65	4.56	33.08	39.65	54	-14.35	Horizontal
9608	39.87	25.58	6.15	33.57	38.03	54	-15.97	Horizontal
12010	36.17	27.68	6.98	33.26	37.57	54	-16.43	Horizontal
14412	*	*	*	*	*	*	*	Horizontal

Remark:

4. *Final Level = Receiver Read level + Antenna Factor + Cable Loss – Preamplifier Factor*
5. *The emission levels of other frequencies are very lower than the limit and not show in test report.*
6. *“*” , means this data is the too weak instrument of signal is unable to test.*

BLE

Test channel:	Middle channel
---------------	----------------

Peak value:

Frequency (MHz)	Read Level (dBuV)	Antenna Factor (dB/m)	Cable Loss (dB)	Preamp Factor (dB)	Level (dBuV/m)	Limit Line (dBuV/m)	Over Limit (dB)	polarization
4882	56.34	21.78	3.58	33.27	48.43	74	-25.57	Vertical
7323	54.17	24.15	4.57	33.87	49.02	74	-24.98	Vertical
9766	53.58	26.04	6.24	33.19	52.67	74	-21.33	Vertical
12205	52.64	27.98	7.18	33.68	54.12	74	-19.88	Vertical
14646	*	*	*	*	*	*	*	Vertical
4882	55.79	21.78	3.58	33.27	47.88	74	-26.12	Horizontal
7323	52.67	24.15	4.57	33.87	47.52	74	-26.48	Horizontal
9764	50.95	26.04	6.24	33.19	50.04	74	-23.96	Horizontal
12205	49.80	27.98	7.18	33.68	51.28	74	-22.72	Horizontal
14646	*	*	*	*	*	*	*	Horizontal

Average value:

Frequency (MHz)	Read Level (dBuV)	Antenna Factor (dB/m)	Cable Loss (dB)	Preamp Factor (dB)	Level (dBuV/m)	Limit Line (dBuV/m)	Over Limit (dB)	polarization
4882	45.62	21.78	3.58	33.27	37.71	54	-16.29	Vertical
7323	44.36	24.15	4.57	33.87	39.21	54	-14.79	Vertical
9766	39.62	26.04	6.24	33.19	38.71	54	-15.29	Vertical
12205	37.18	27.98	7.18	33.68	38.66	54	-15.34	Vertical
14646	*	*	*	*	*	*	*	Vertical
4882	44.41	21.78	3.58	33.27	36.5	54	-17.5	Horizontal
7323	42.57	24.15	4.57	33.87	37.42	54	-16.58	Horizontal
9764	40.95	26.04	6.24	33.19	40.04	54	-13.96	Horizontal
12205	38.63	27.98	7.18	33.68	40.11	54	-13.89	Horizontal
14646	*	*	*	*	*	*	*	Horizontal

Remark:

4. *Final Level = Receiver Read level + Antenna Factor + Cable Loss – Pre-amplifier Factor*
5. *The emission levels of other frequencies are very lower than the limit and not show in test report.*
6. *“*”, means this data is the too weak instrument of signal is unable to test.*

BLE

Test channel:	Highest channel
---------------	-----------------

Peak value:

Frequency (MHz)	Read Level (dBuV)	Antenna Factor (dB/m)	Cable Loss (dB)	Preamp Factor (dB)	Level (dBuV/m)	Limit Line (dBuV/m)	Over Limit (dB)	polarization
4960	56.44	22.56	4.17	33.75	49.42	74	-24.58	Vertical
7440	53.29	24.78	5.36	33.17	50.26	74	-23.74	Vertical
9920	52.37	27.14	6.97	33.62	52.86	74	-21.14	Vertical
12400	50.83	28.16	7.65	33.58	53.06	74	-20.94	Vertical
14880	*	*	*	*	*	*	*	Vertical
4960	54.76	22.56	4.17	33.75	47.74	74	-26.26	Horizontal
7440	51.24	24.78	5.36	33.17	48.21	74	-25.79	Horizontal
9920	51.63	27.14	6.97	33.62	52.12	74	-21.88	Horizontal
12400	48.22	28.16	7.65	33.58	50.45	74	-23.55	Horizontal
14880	*	*	*	*	*	*	*	Horizontal

Average value:

Frequency (MHz)	Read Level (dBuV)	Antenna Factor (dB/m)	Cable Loss (dB)	Preamp Factor (dB)	Level (dBuV/m)	Limit Line (dBuV/m)	Over Limit (dB)	polarization
4960	45.13	22.56	4.17	33.75	38.11	54	-15.89	Vertical
7440	43.56	24.78	5.36	33.17	40.53	54	-13.47	Vertical
9920	38.47	27.14	6.97	33.62	38.96	54	-15.04	Vertical
12400	36.59	28.16	7.65	33.58	38.82	54	-15.18	Vertical
14880	*	*	*	*	*	*	*	Vertical
4960	43.25	22.56	4.17	33.75	36.23	54	-17.77	Horizontal
7440	42.38	24.78	5.36	33.17	39.35	54	-14.65	Horizontal
9920	38.61	27.14	6.97	33.62	39.10	54	-14.90	Horizontal
12400	37.59	28.16	7.65	33.58	39.82	54	-14.18	Horizontal
14880	*	*	*	*	*	*	*	Horizontal

Remark:

7. Final Level = Receiver Read level + Antenna Factor + Cable Loss – Preamplifier Factor
8. The emission levels of other frequencies are very lower than the limit and not show in test report.
9. “*”, means this data is the too weak instrument of signal is unable to test.

7.3.3 Bandedge emissions

All of the restriction bands were tested, and only the data of worst case was exhibited.

BR+EDR

Test channel:	Lowest channel
---------------	----------------

Peak value:

Frequency (MHz)	Read Level (dBuV)	Antenna Factor (dB/m)	Cable Loss (dB)	Preamp Factor (dB)	Level (dBuV/m)	Limit Line (dBuV/m)	Over Limit (dB)	Polarization
2310	55.34	21.52	3.52	33.12	47.26	74	-26.74	Horizontal
2390	54.98	23.65	4.56	33.08	50.11	74	-23.89	Horizontal
2400	52.06	25.58	6.15	33.57	50.22	74	-23.78	Horizontal
2310	53.81	27.68	6.98	33.26	55.21	74	-18.79	Vertical
2390	55.97	21.52	3.52	33.12	47.89	74	-26.11	Vertical
2400	54.73	23.65	4.56	33.08	49.86	74	-24.14	Vertical

Average value:

Frequency (MHz)	Read Level (dBuV)	Antenna Factor (dB/m)	Cable Loss (dB)	Preamp Factor (dB)	Level (dBuV/m)	Limit Line (dBuV/m)	Over Limit (dB)	Polarization
2310	39.76	21.52	3.52	33.12	31.68	54	-22.32	Horizontal
2390	38.25	23.65	4.56	33.08	33.38	54	-20.62	Horizontal
2400	39.63	25.58	6.15	33.57	37.79	54	-16.21	Horizontal
2310	36.78	27.68	6.98	33.26	38.18	54	-15.82	Vertical
2390	40.12	21.52	3.52	33.12	32.04	54	-21.96	Vertical
2400	38.75	23.65	4.56	33.08	33.88	54	-20.12	Vertical

BR+EDR

Test channel:	Highest channel
---------------	-----------------

Peak value:

Frequency (MHz)	Read Level (dBuV)	Antenna Factor (dB/m)	Cable Loss (dB)	Preamp Factor (dB)	Level (dBuV/m)	Limit Line (dBuV/m)	Over Limit (dB)	Polarization
2483.5	52.39	21.25	3.26	33.14	43.76	74	-30.24	Horizontal
2500	51.47	21.75	3.54	33.42	43.34	74	-30.66	Horizontal
2483.5	52.86	21.25	3.26	33.14	44.23	74	-29.77	Vertical
2500	52.64	21.75	3.54	33.42	44.51	74	-29.49	Vertical

Average value:

Frequency (MHz)	Read Level (dBuV)	Antenna Factor (dB/m)	Cable Loss (dB)	Preamp Factor (dB)	Level (dBuV/m)	Limit Line (dBuV/m)	Over Limit (dB)	Polarization
2483.5	36.73	21.25	3.26	33.14	28.1	54	-25.9	Horizontal
2500	35.49	21.75	3.54	33.42	27.36	54	-26.64	Horizontal
2483.5	38.54	21.25	3.26	33.14	29.91	54	-24.09	Vertical
2500	36.92	21.75	3.54	33.42	28.79	54	-25.21	Vertical

Remark:

1. *Final Level = Receiver Read level + Antenna Factor + Cable Loss – Preamplifier Factor*

BLE

Peak value:

Frequency (MHz)	Read Level (dBuV)	Antenna Factor (dB/m)	Cable Loss (dB)	Preamp Factor (dB)	Level (dBuV/m)	Limit Line (dBuV/m)	Over Limit (dB)	Polarization
2310	54.35	21.78	3.58	33.27	46.44	74	-27.56	Horizontal
2390	53.32	24.15	4.57	33.87	48.17	74	-25.83	Horizontal
2400	52.64	26.04	6.24	33.19	51.73	74	-22.27	Horizontal
2310	53.13	27.98	7.18	33.68	54.61	74	-19.39	Vertical
2390	54.78	21.78	3.58	33.27	46.87	74	-27.13	Vertical
2400	53.69	24.15	4.57	33.87	48.54	74	-25.46	Vertical

Average value:

Frequency (MHz)	Read Level (dBuV)	Antenna Factor (dB/m)	Cable Loss (dB)	Preamp Factor (dB)	Level (dBuV/m)	Limit Line (dBuV/m)	Over Limit (dB)	Polarization
2310	40.12	21.78	3.58	33.27	32.21	54	-21.79	Horizontal
2390	39.75	24.15	4.57	33.87	34.6	54	-19.4	Horizontal
2400	39.58	26.04	6.24	33.19	38.67	54	-15.33	Horizontal
2310	37.28	27.98	7.18	33.68	38.76	54	-15.24	Vertical
2390	39.67	21.78	3.58	33.27	31.76	54	-22.24	Vertical
2400	38.94	24.15	4.57	33.87	33.79	54	-20.21	Vertical

BLE

Peak value:

Frequency (MHz)	Read Level (dBuV)	Antenna Factor (dB/m)	Cable Loss (dB)	Preamp Factor (dB)	Level (dBuV/m)	Limit Line (dBuV/m)	Over Limit (dB)	Polarization
2483.5	51.75	22.12	3.65	33.54	43.98	74	-30.02	Horizontal
2500	50.93	22.35	3.98	33.27	43.99	74	-30.01	Horizontal
2483.5	52.48	22.12	3.65	33.54	44.71	74	-29.29	Vertical
2500	51.39	22.35	3.98	33.27	44.45	74	-29.55	Vertical

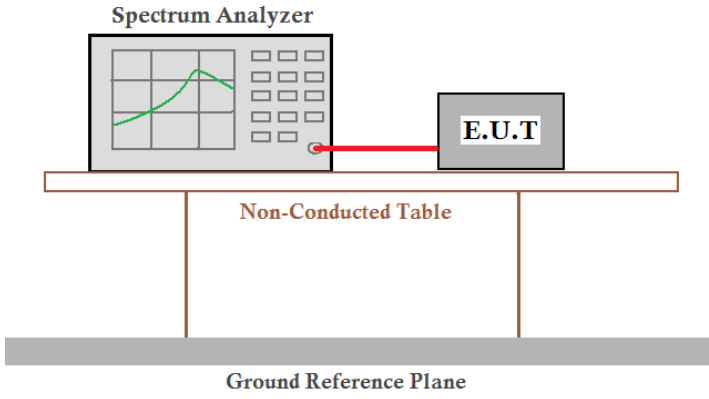
Average value:

Frequency (MHz)	Read Level (dBuV)	Antenna Factor (dB/m)	Cable Loss (dB)	Preamp Factor (dB)	Level (dBuV/m)	Limit Line (dBuV/m)	Over Limit (dB)	Polarization
2483.5	37.43	22.12	3.65	33.54	29.66	54	-24.34	Horizontal
2500	37.51	22.35	3.98	33.27	30.57	54	-23.43	Horizontal
2483.5	37.89	22.12	3.65	33.54	30.12	54	-23.88	Vertical
2500	37.43	22.35	3.98	33.27	30.49	54	-23.51	Vertical

Remark:

Final Level = Receiver Read level + Antenna Factor + Cable Loss – Preamplifier Factor

7.4 20dB Occupy Bandwidth

Test Requirement:	FCC Part15 C Section 15.249/15.215
Test Method:	ANSI C63.10:2013
Limit:	Operation Frequency range 2400MHz~2483.5MHz
Test setup:	 <p>The diagram illustrates the test setup. A Spectrum Analyzer is connected via a red cable to an E.U.T. (Equipment Under Test). Both are placed on a Non-Conducted Table. Below the table is a Ground Reference Plane.</p>
Test Instruments:	Refer to section 6.0 for details
Test mode:	Refer to section 5.2 for details
Test results:	Pass

Measurement Data

BR+EDR

Test channel		20dB bandwidth(MHz)	Result
GFSK	Lowest	1.015	Pass
	Middle	1.014	Pass
	Highest	1.018	Pass
$\pi/4$ -DQPSK	Lowest	1.271	Pass
	Middle	1.271	Pass
	Highest	1.285	Pass
8-DPSK	Lowest	1.264	Pass
	Middle	1.274	Pass
	Highest	1.270	Pass

BLE

Test channel		20dB bandwidth(MHz)	Result
GFSK	Lowest	1.083	Pass
	Middle	1.083	Pass
	Highest	1.083	Pass

Test plot as follows: BR+EDR
GFSK

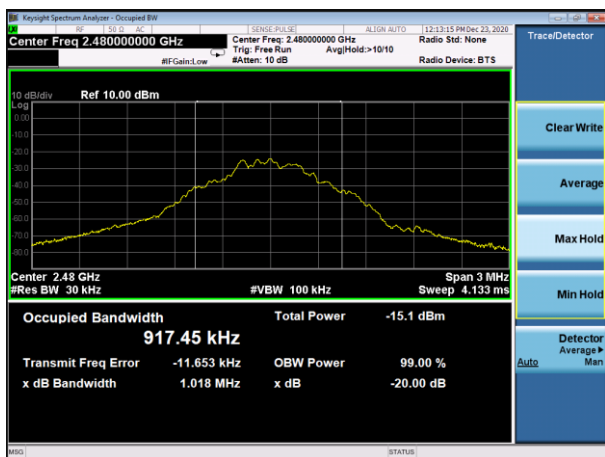
$\pi/4$ -DQPSK



Lowest channel



Middle channel



Highest channel

8-DPSK



Lowest channel

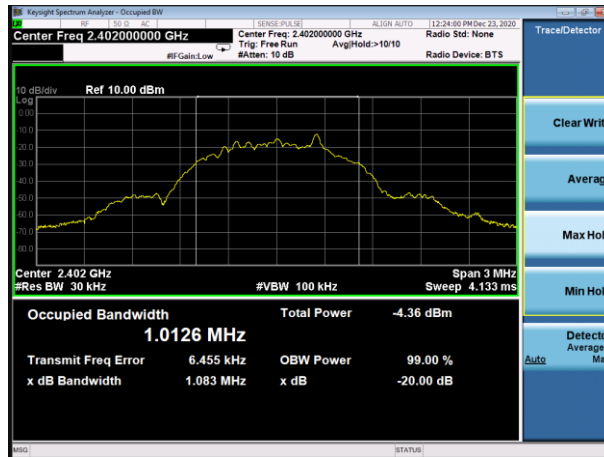


Middle channel



Highest channel

BLE



Lowest channel



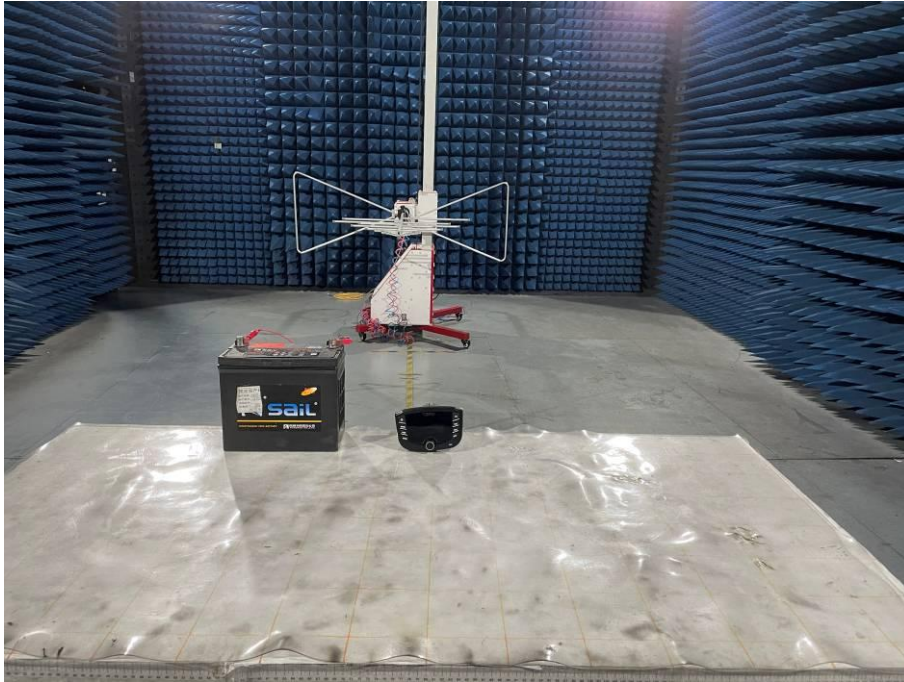
Middle channel



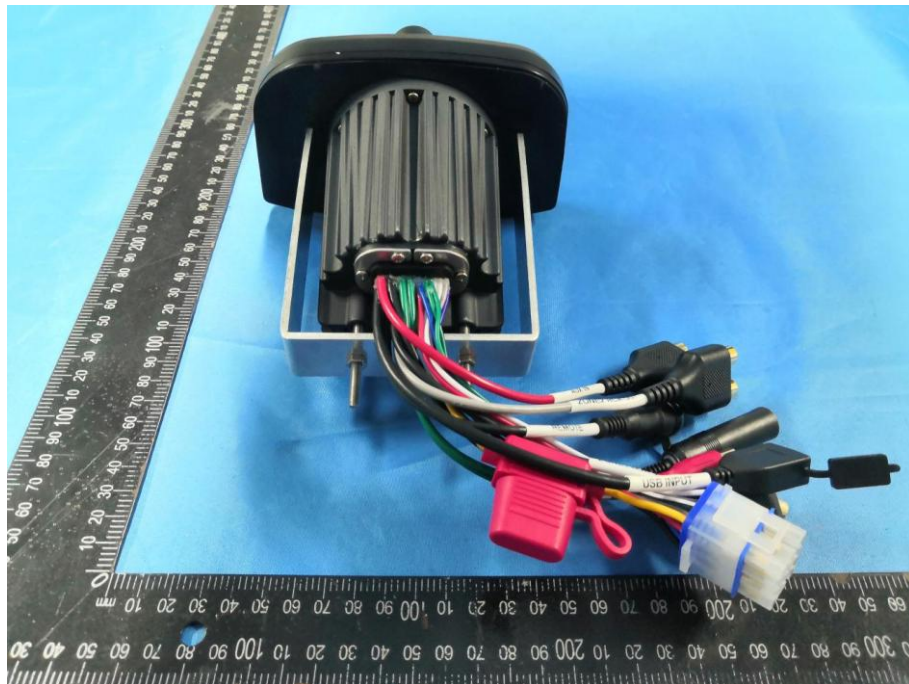
Highest channel

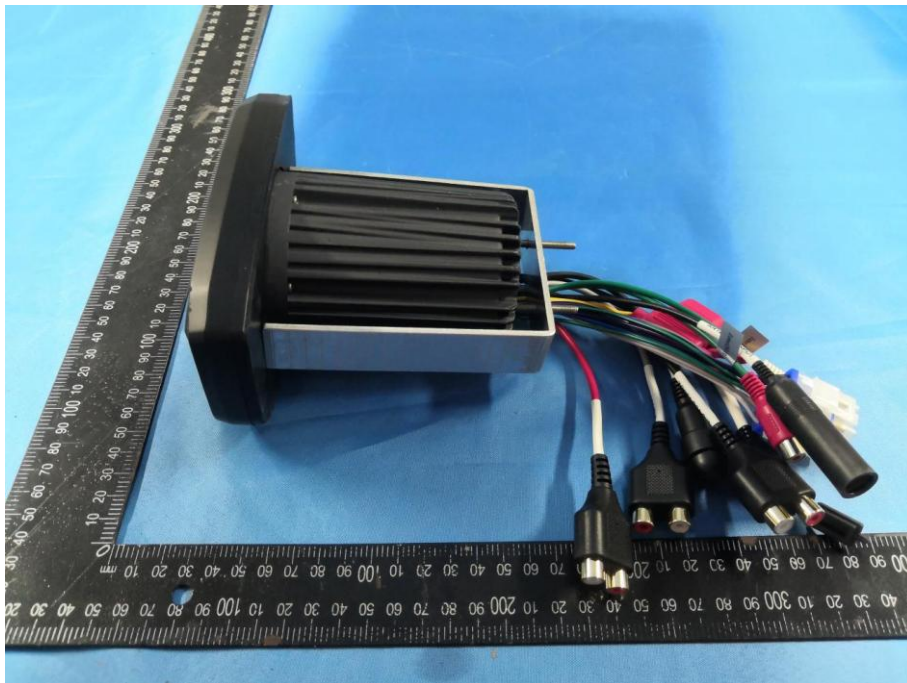
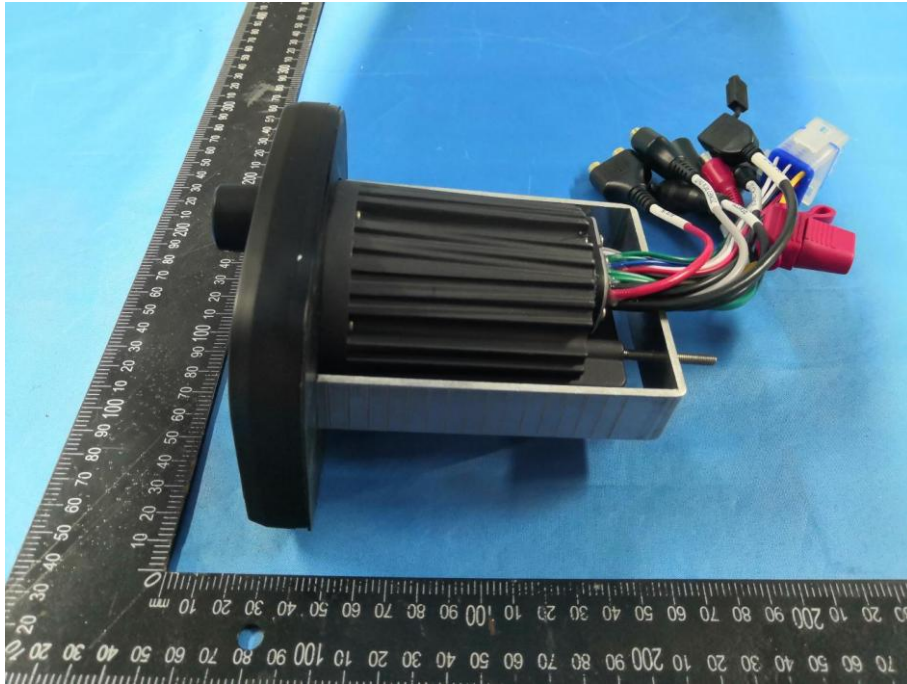
8 Test Setup Photo

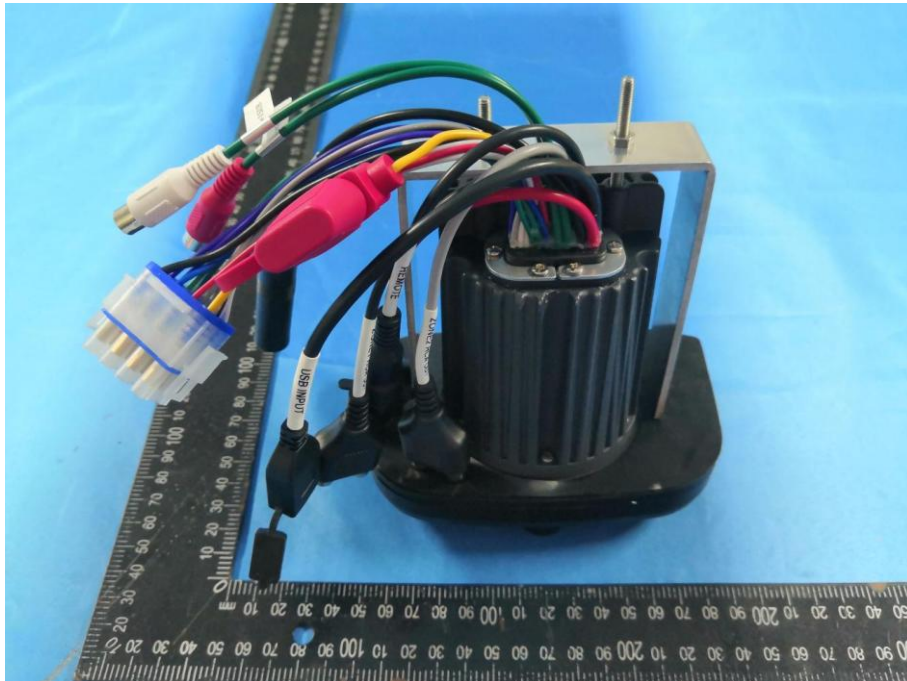
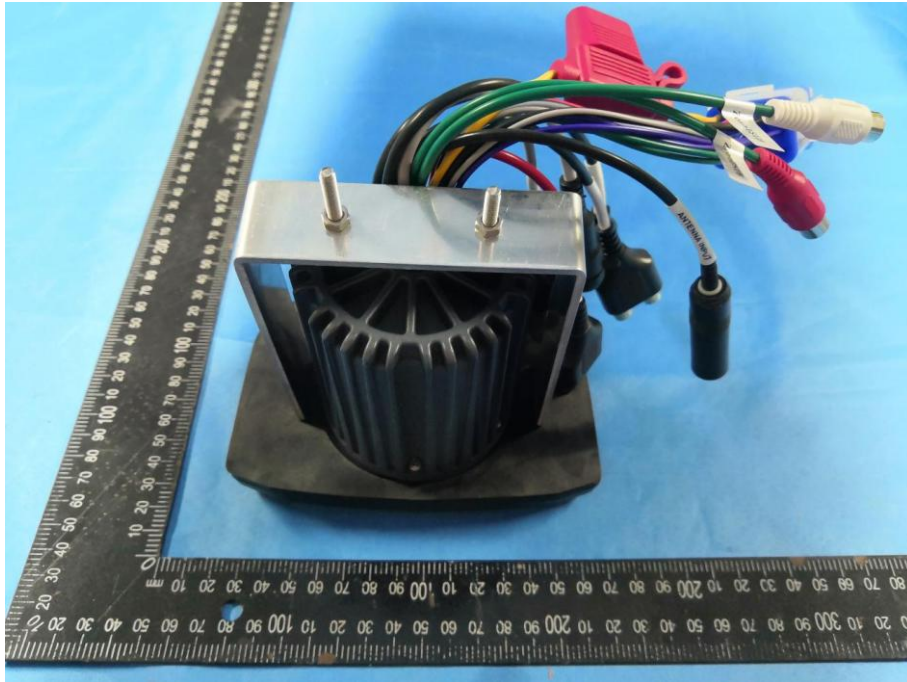
RE

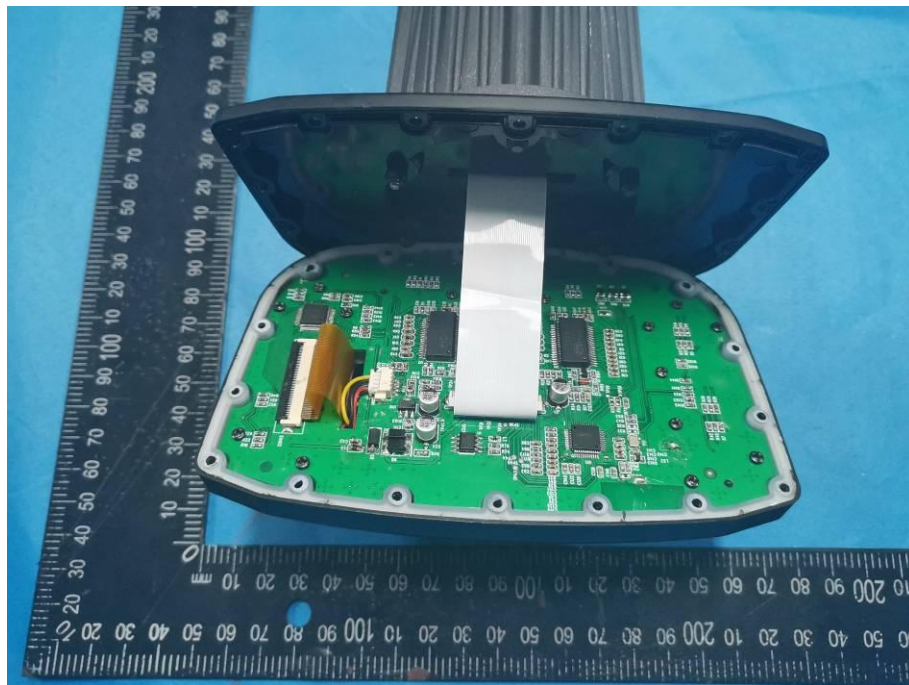
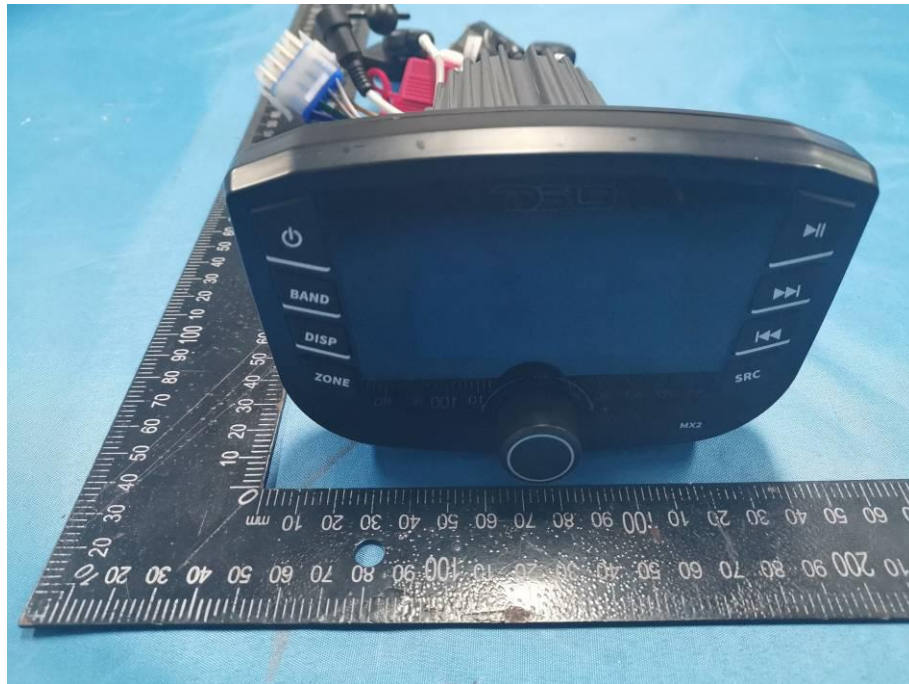


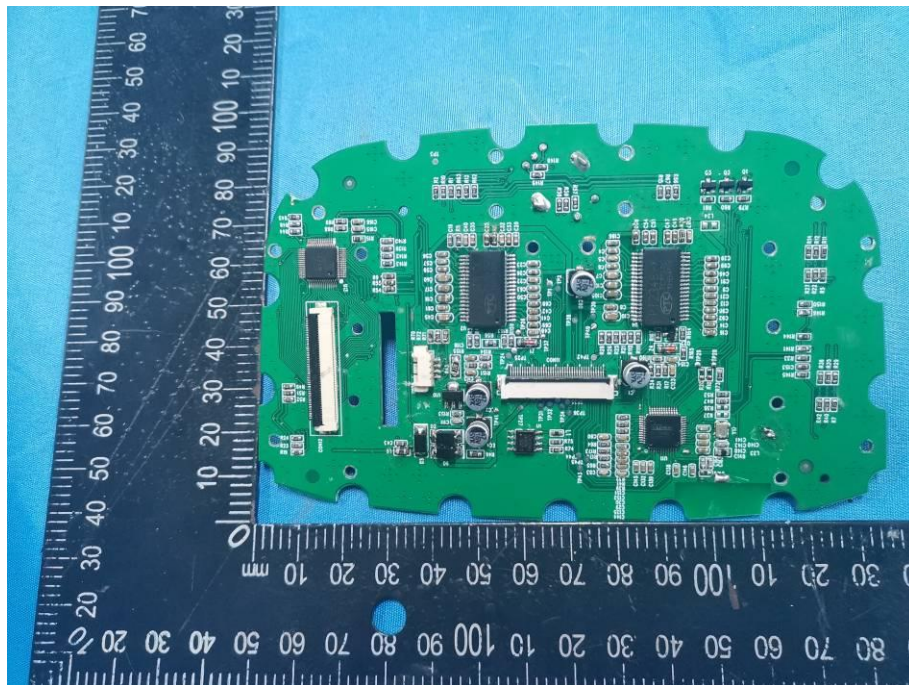
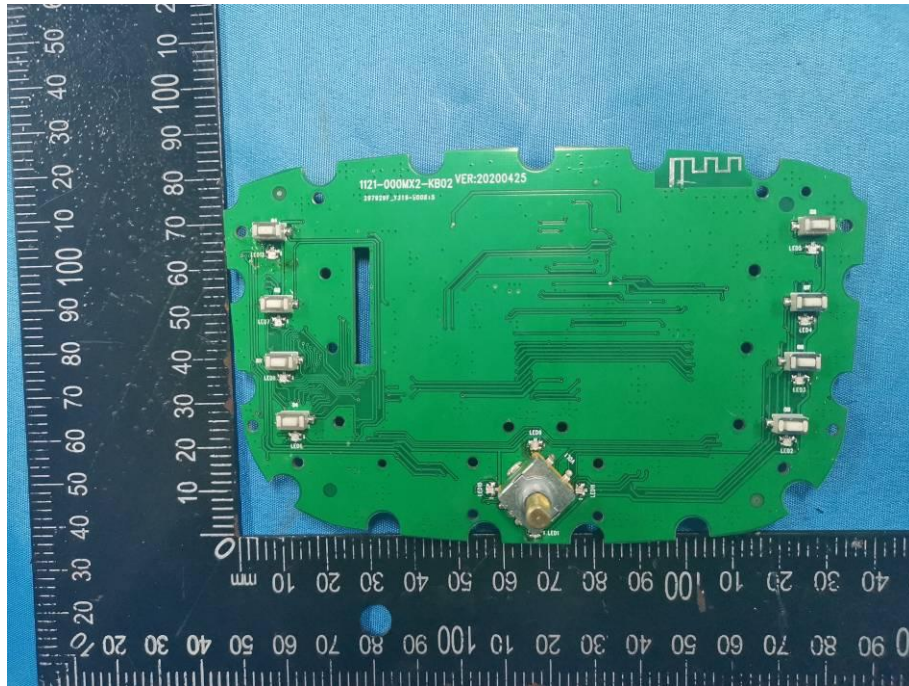
9 EUT Constructional Details

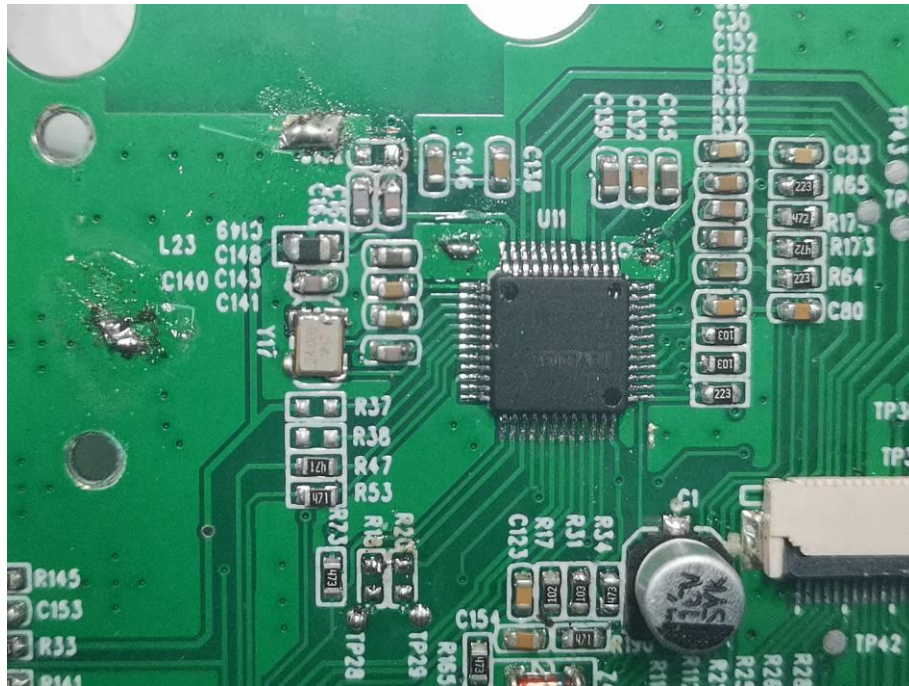












-----End-----