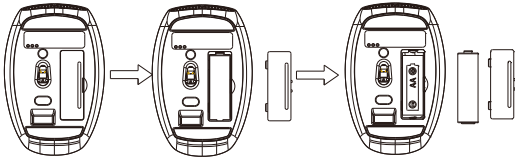


Install the Batteries

The RF2.4GHz Optical mouse use one AA alkaline battery
The RF2.4GHz Optical keyboard use one AAA alkaline battery

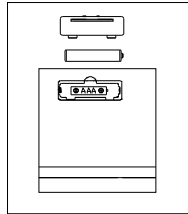
Install battery in the mouse/ Install battery in the keyboard

- Step 1. Open the battery compartment
- Step 2. Insert the battery as shown inside the battery compartment
- Step 3. Replace the cover



Install battery in the mouse/ Install battery in the keyboard

- Step1: Remove the battery compartment cover on the bottom of the keyboard by squeezing the cover in from the tab to release it
- Step2: Insert the batteries as shown inside the battery compartment
- Step3: Replace the cover

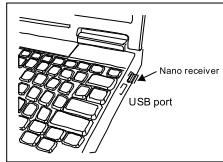


Connecting the Receiver

Pls insert the USB receiver into the USB port of your computer or laptop.



USB Port



The connection will be done automatically after 1-3 seconds.

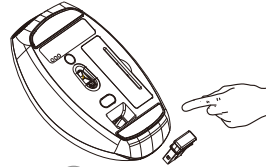
Multimedia Hotkeys functions

Pressing Fn + Esc = enable or disable the Multimedia Hotkeys functions

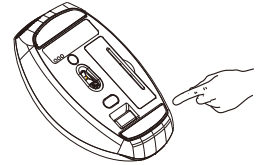
- | | |
|-------------------|-------------------------|
| F1:Previous Track | F8:Search |
| F2:Play/Pause | F9:EmailF10:My Favorite |
| F3:Next Track | F11: save |
| F4:Mute | F12: computer settings |
| F5:Volume Down | : Copy |
| F6:Volume Up | : Paste |
| F7:Web home | : calculator |

Obtain the receiver on the mouse

- 1.If you want to use the mouse, pls take out the receiver (shown in picture ①) and connect it to computer;
- 2. If you want to stop using the mouse, pls put the receiver back to the mouse (shown in picture ②)



① Take out the receiver



② Store the receiver

Restoring factory default settings

Mouse:

When the end-user finds the wireless mouse doesn't work, please check:

- 1. Whether the battery is used out, if yes, please replace it with a new battery;
- 2. If the indicator light on the bottom of the mouse is off, please restore the default setting (automatic pairing) by following steps:

Step 1: unplug and plug again the nano receiver into an available USB port of the computer.

Step 2: make the wireless mouse close to the nano receiver (within 10 cm), take out the battery and install the battery again inside the battery compartment, if the indicator light on the bottom of the mouse is on, you can use the wireless mouse again.

Power-Save function:

- 1. Without using the mouse for 1 minute, the mouse will go into sleep mode level 1. You can move it to wake up the mouse. The Red LED is still on.
- 2. Without using the mouse for 1-8 minutes, the mouse will go into sleep mode level 2. You can move it to wake up the mouse. The Red LED keep flashing.
- 3. Without using the mouse for more than 8 minutes, the mouse will go into deep sleep. The mouse will go into deep sleep mode and the LED will be turn off automatically.

State of standby and wake up the mouse

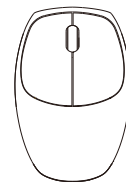
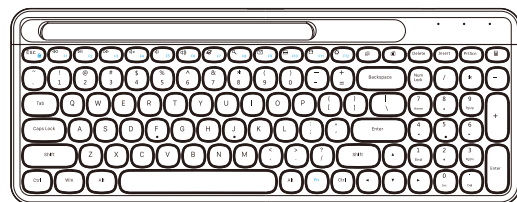
Without any clicks or scroll movement for 8 minutes, the mouse will go into standby mode. Click any button scroll the wheel to wake up the mouse. Under this ECO mode, the optical Red LED will be turn off automatically and the mouse won't respond by moving it.

Technical support:
support@uhurumobility.com
For more products:
www.uhurumobility.com



uhuru

USER MANUAL



Rf2.4GHz Auto-Link
Keyboard&Optical Mouse

Model: WKM-18,WKM-28

FCC Statement

This equipment has been tested and found to comply with the limits for a Class B digital device, pursuant to part 15 of the FCC Rules. These limits are designed to provide reasonable protection against harmful interference in a residential installation. This equipment generates, uses and can radiate radio frequency energy and, if not installed and used in accordance with the instructions, may cause harmful interference to radio communications. However, there is no guarantee that interference will not occur in a particular installation. If this equipment does cause harmful interference to radio or television reception, which can be determined by turning the equipment off and on, the user is encouraged to try to correct the interference by one or more of the following measures:

- Reorient or relocate the receiving antenna.
- Increase the separation between the equipment and receiver.
- Connect the equipment into an outlet on a circuit different from that to which the receiver is connected.
- Consult the dealer or an experienced radio/TV technician for help.

Caution: Any changes or modifications to this device not explicitly approved by manufacturer could void your authority to operate this equipment.

This device complies with part 15 of the FCC Rules. Operation is subject to the following two conditions: (1) This device may not cause harmful interference, and (2) this device must accept any interference received, including interference that may cause undesired operation.

RF Exposure Information

The device has been evaluated to meet general RF exposure requirement. The device can be used in portable exposure condition without restriction.