

8. Band Edge Check

8.1. Test limits

Please refer section RSS-GEN&15.247.

8.2. Test Procedure

Details see the KDB558074 D01 Meas Guidance v05r02

8.2.1 Put the EUT on a 1.5m high table, power on the EUT. Emissions were scanned and measured rotating the EUT to 360 degrees, Find the maximum Emission

8.2.2 Check the spurious emissions out of band.

8.2.3 RBW 1MHz ,VBW 3MHz ,peak detector for peak value , RBW 1MHz ,VBW 3MHz ,RMS detector for AV value.

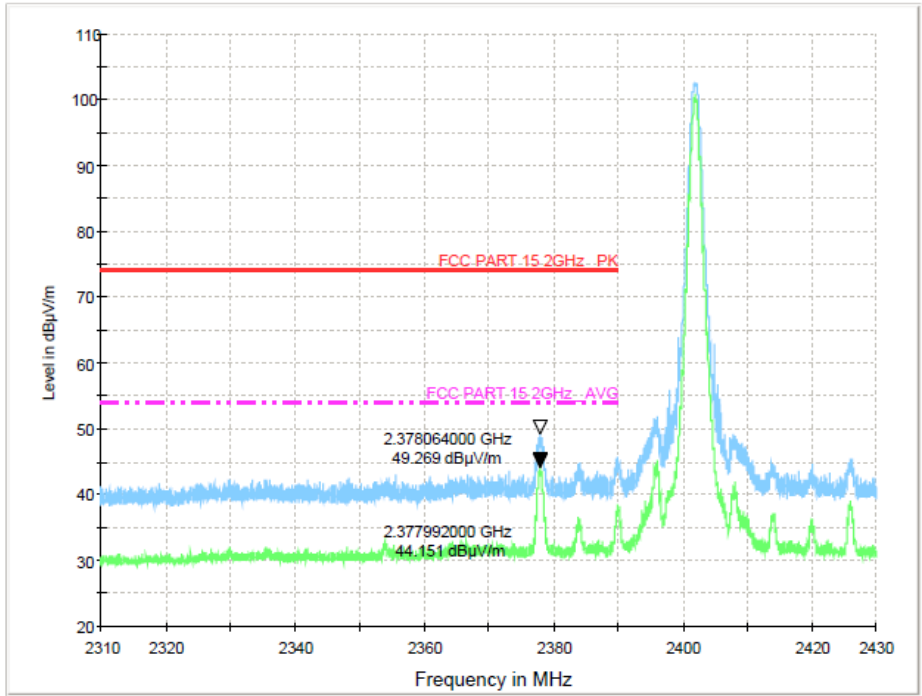
8.3. Test Setup

Same as 3.3 above 1GHz.

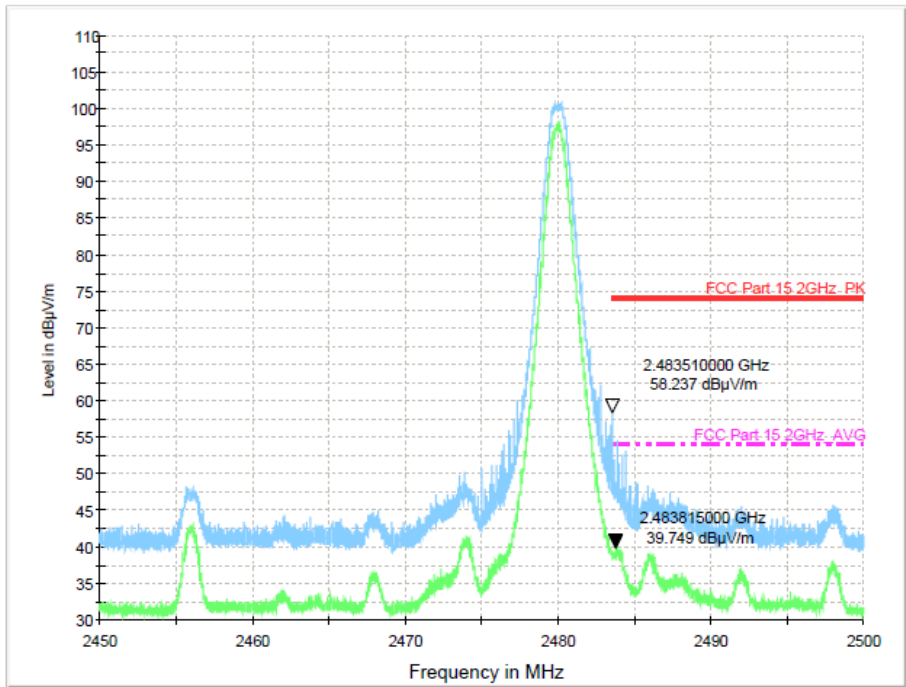
8.4. Test Results

Radiated Method:
ANT 1

Test Mode: GFSK-Low



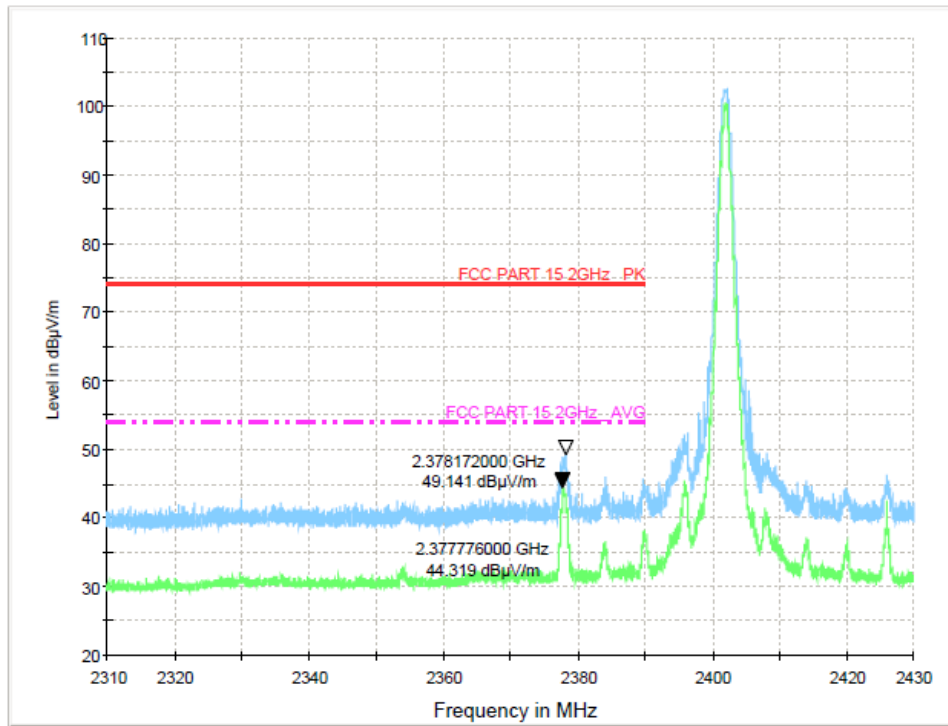
Test Mode: GFSK-High



ANT 2

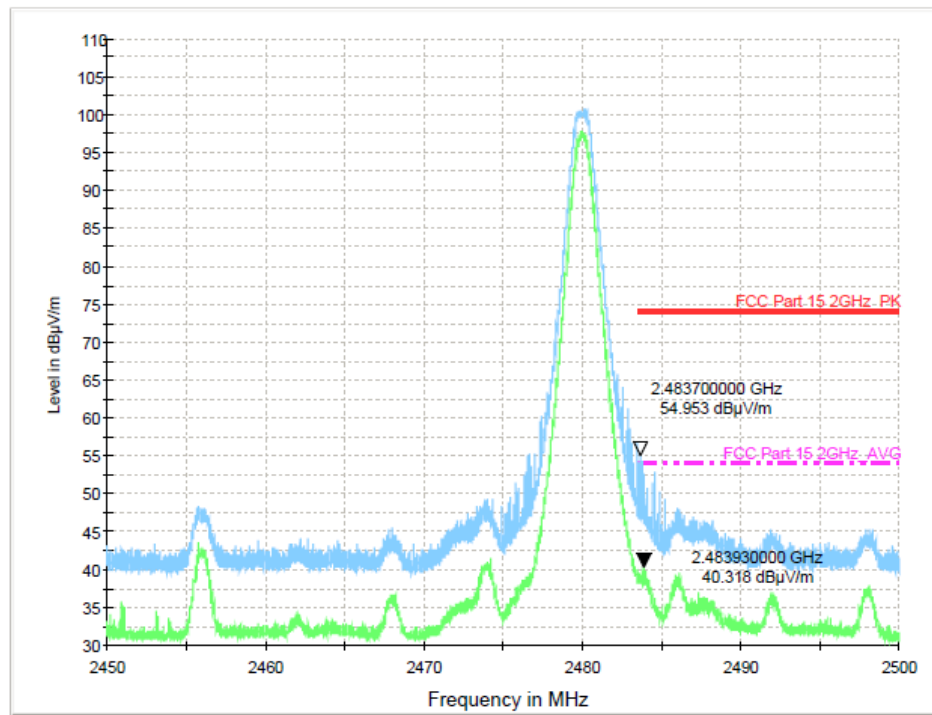
Test Mode:

GFSK-Low

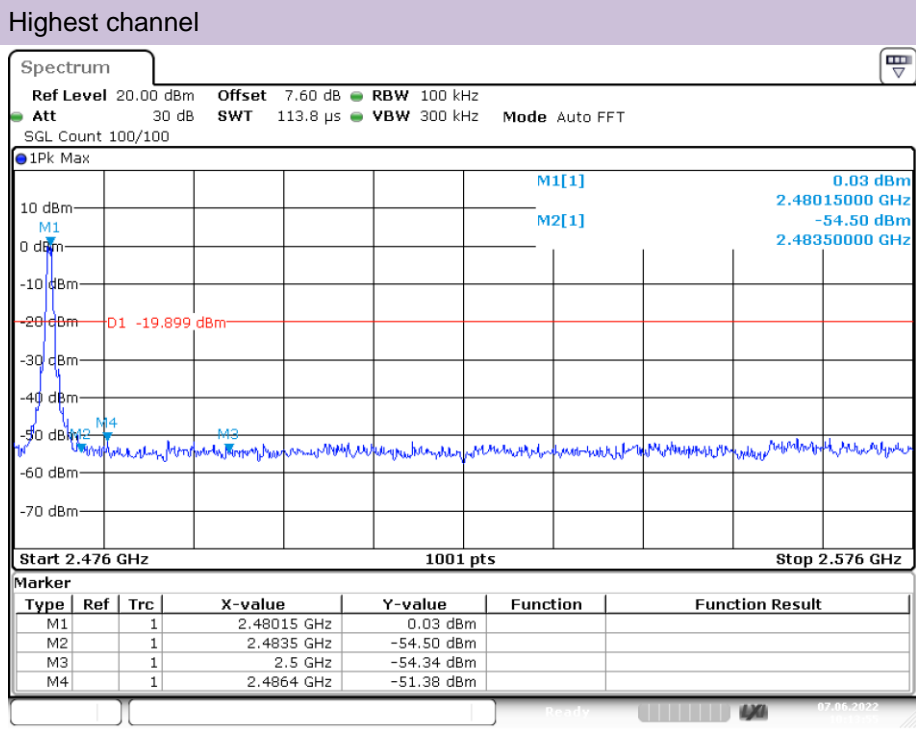
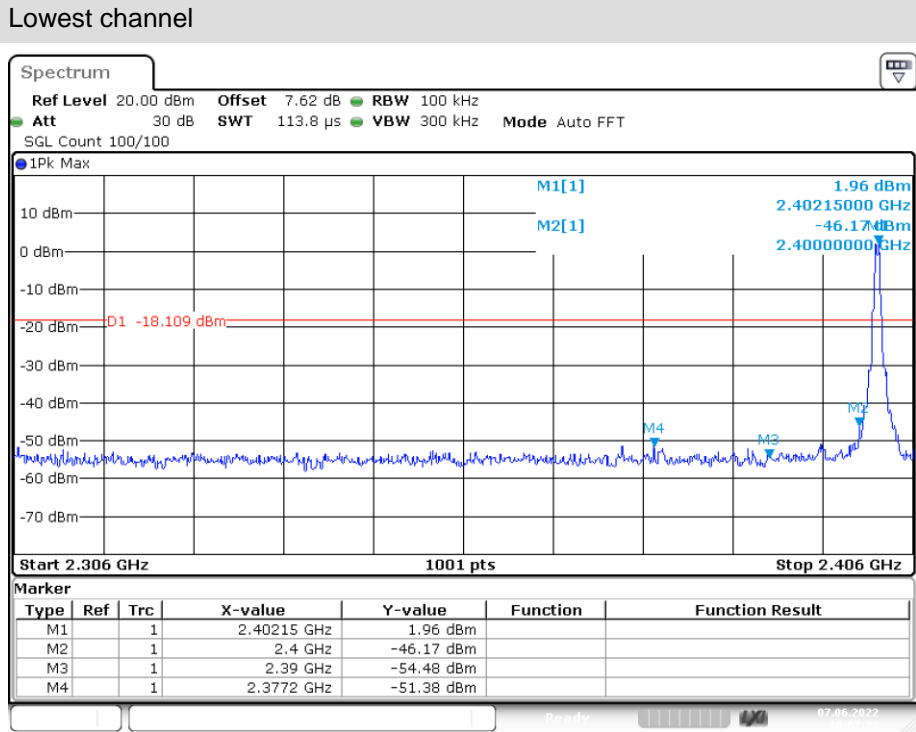


Test Mode:

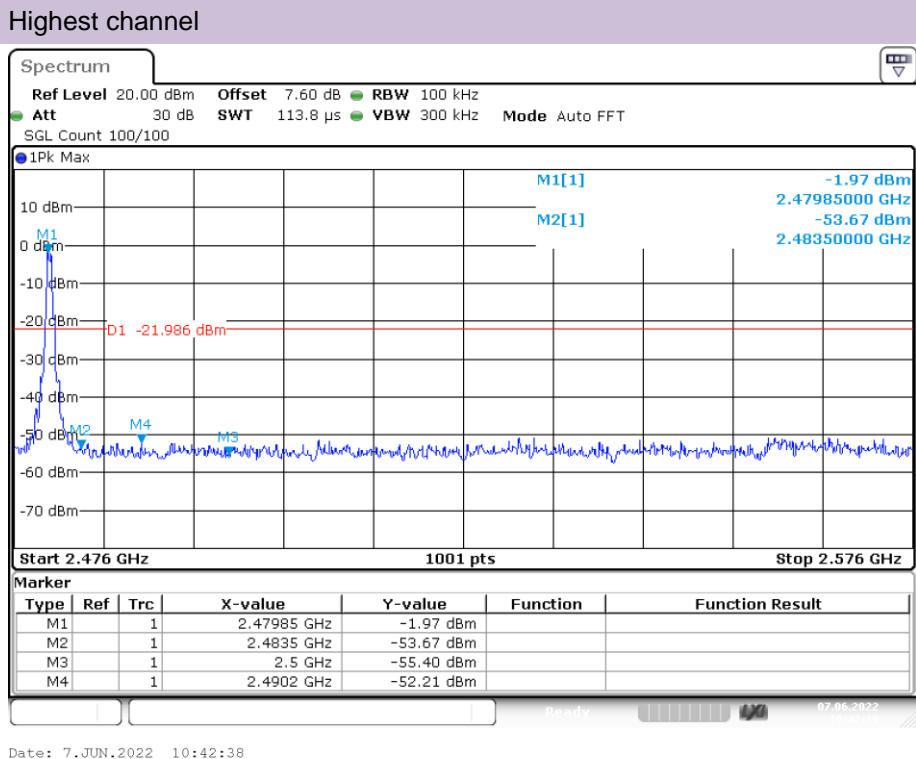
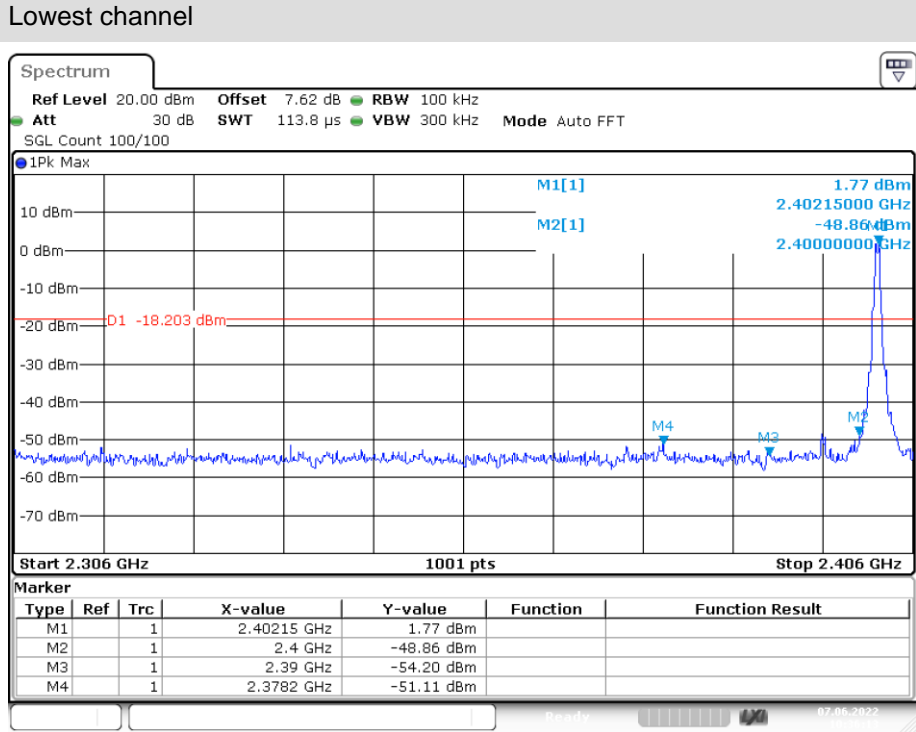
GFSK-High



Conducted Method:
GFSK(ANT 1)



Conducted Method:
GFSK(ANT 2)



9. Antenna Requirement

9.1. Standard Requirement

An intentional radiator shall be designed to ensure that no antenna other than that furnished by the responsible party shall be used with the device. The use of a permanently attached antenna or of an antenna that uses a unique coupling to the intentional radiator shall be considered sufficient to comply with the provisions of this Section. The manufacturer may design the unit so that a broken antenna can be replaced by the user, but the use of a standard antenna jack or electrical connector is prohibited.

9.2. Antenna Connected Construction

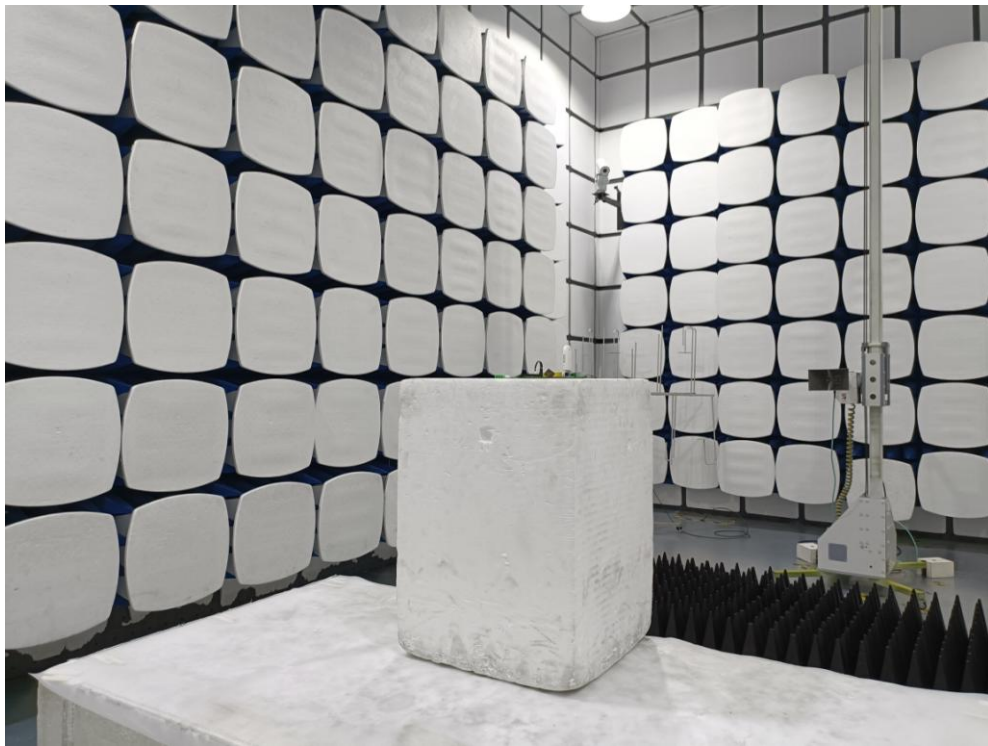
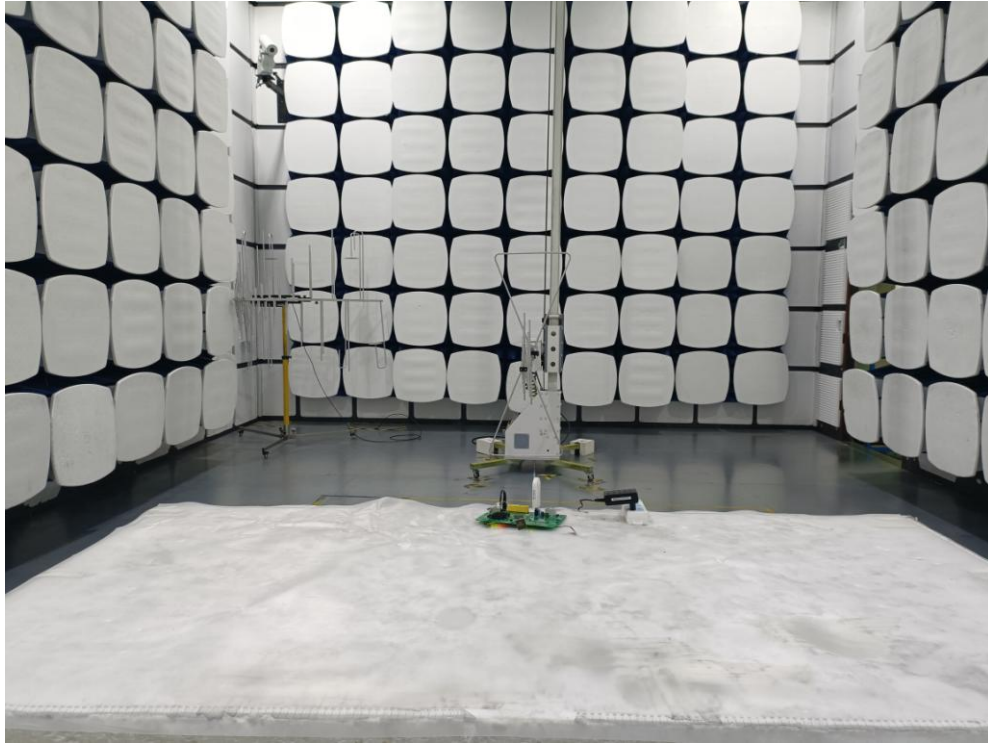
The antenna is Internal antenna and no consideration of replacement. Please see EUT photo for details.

9.3. Results

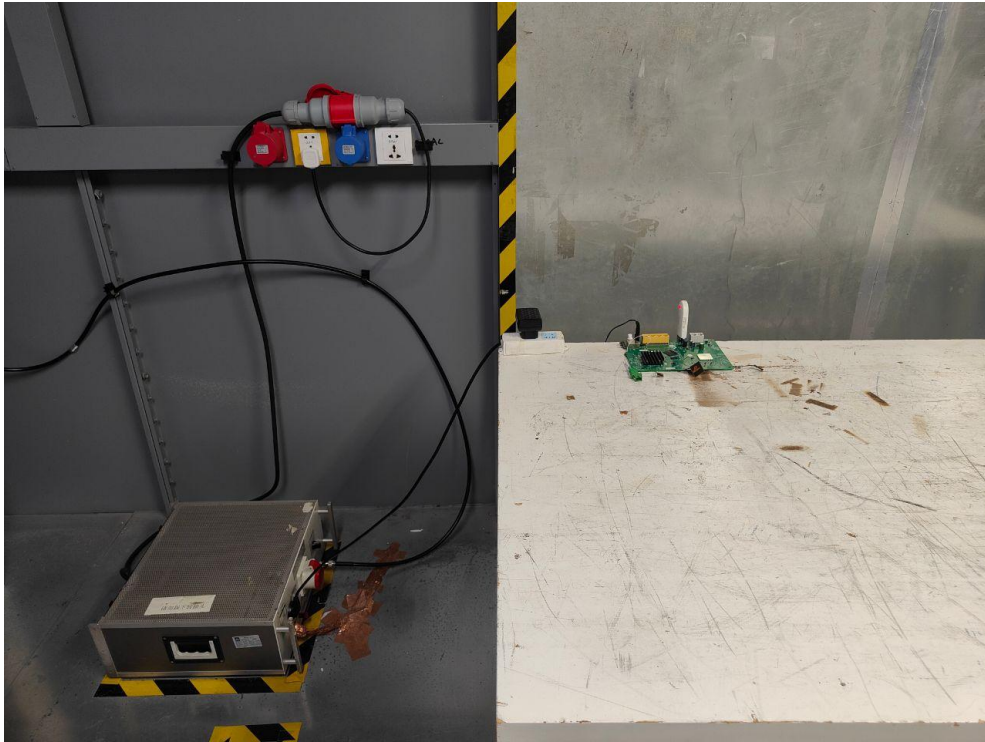
The EUT antenna is Internal Antenna. It comply with the standard requirement.

10. Test Setup Photo

10.1. Photos of Radiated emission



10.2.Photos of Conducted Emission test

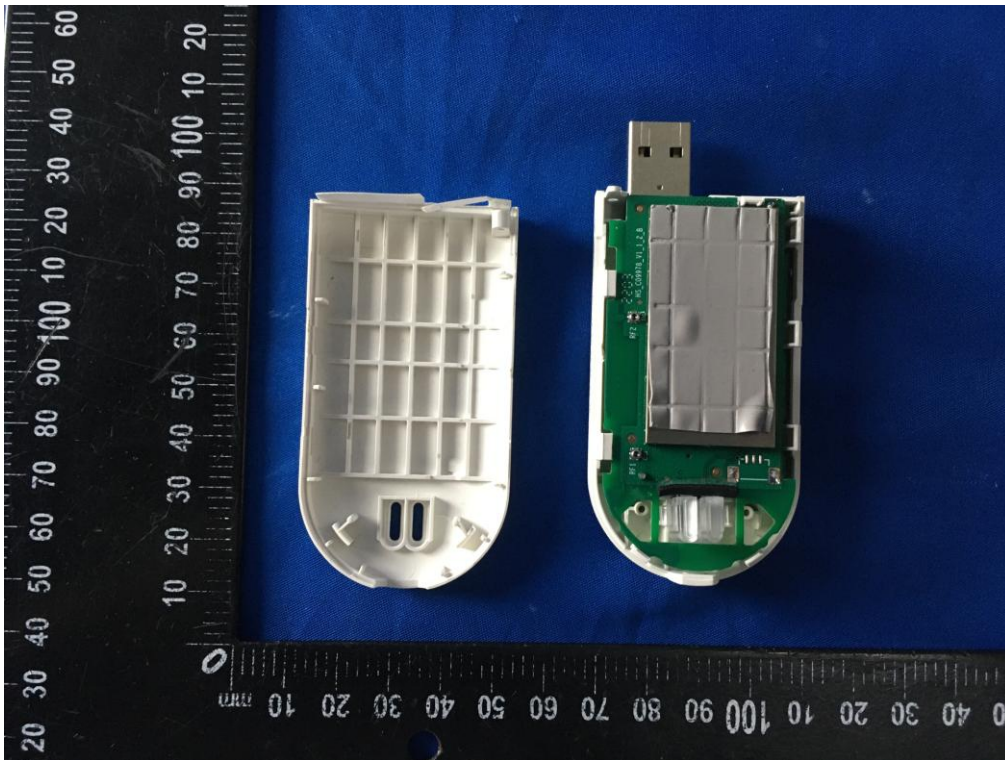


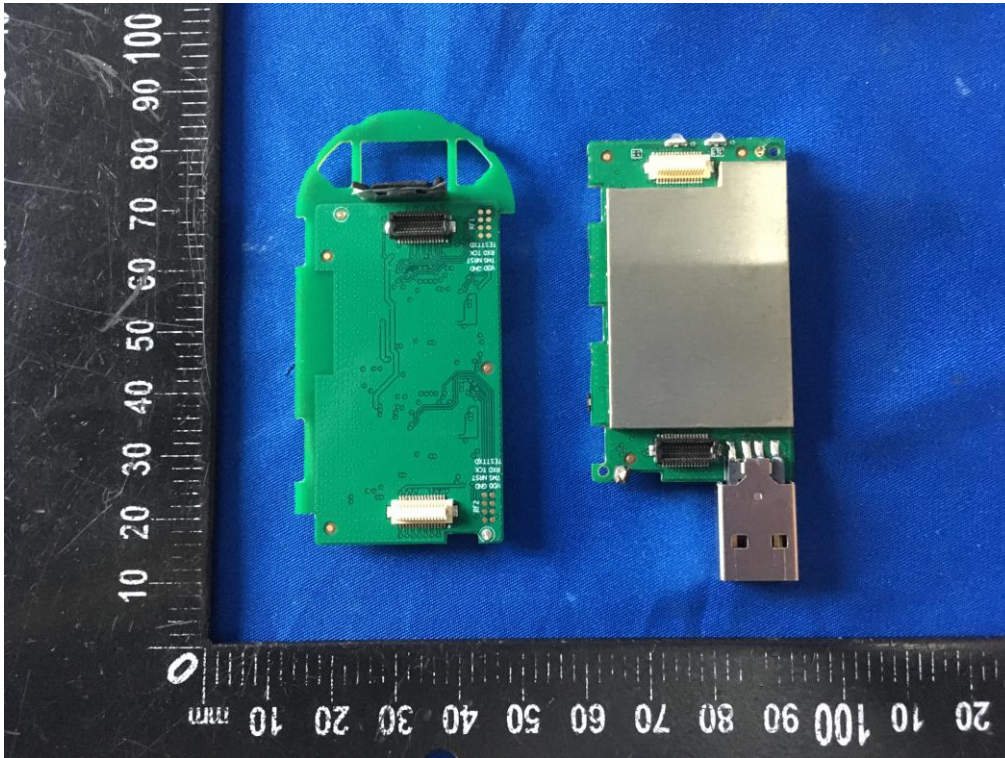
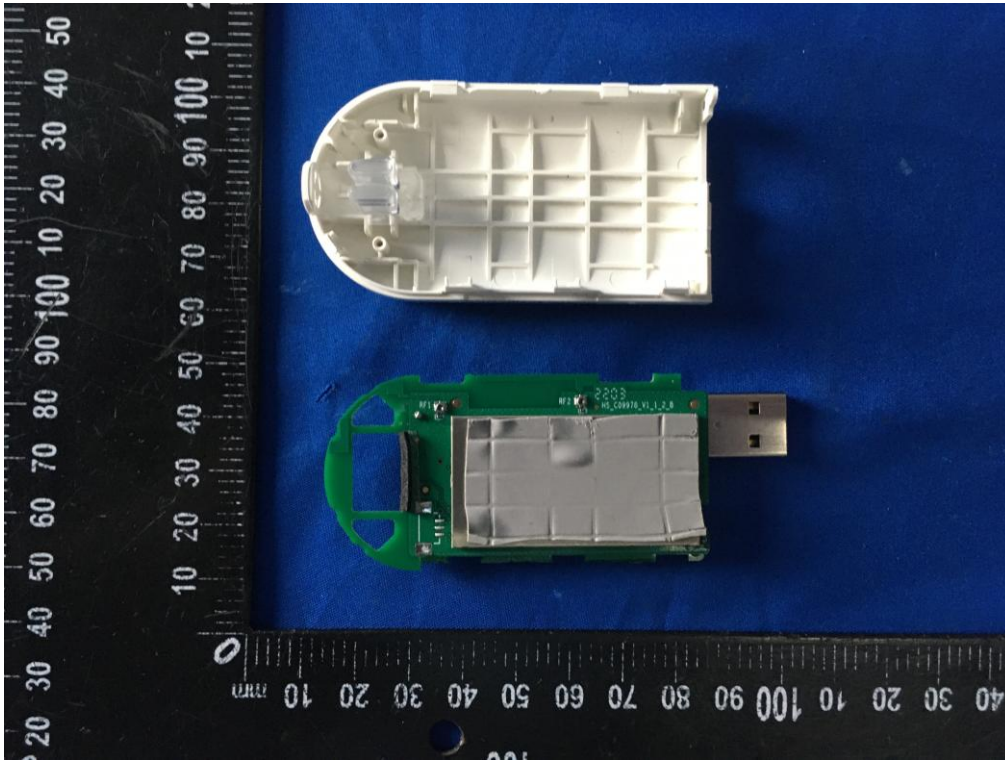
11. Photos of EUT

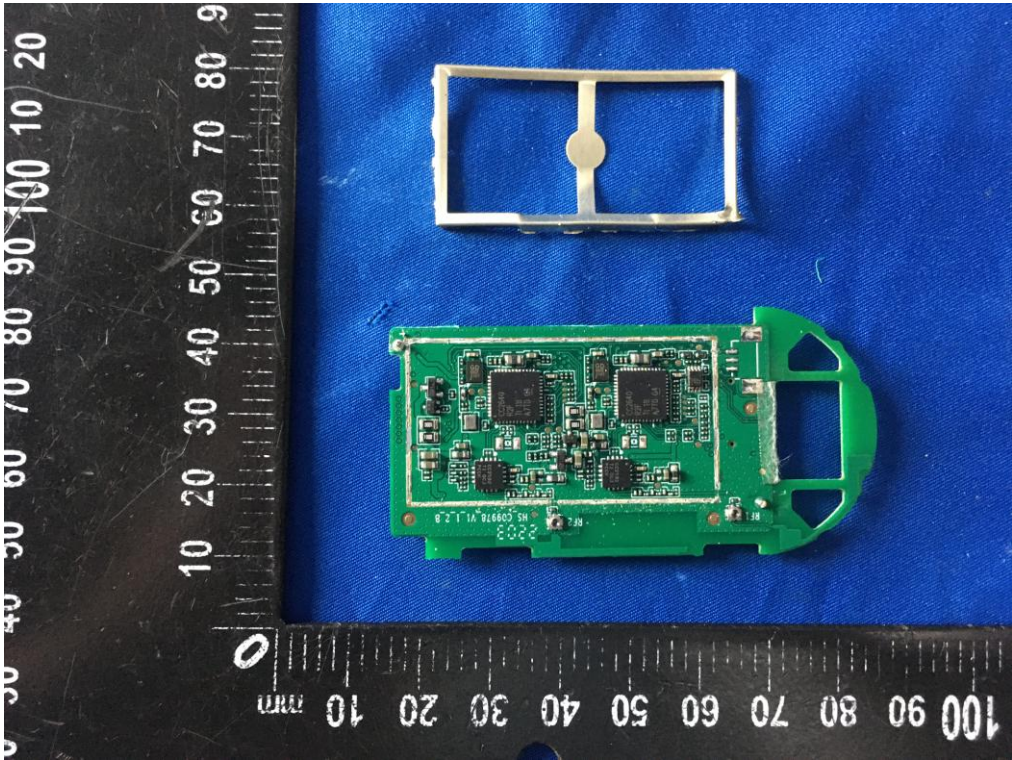
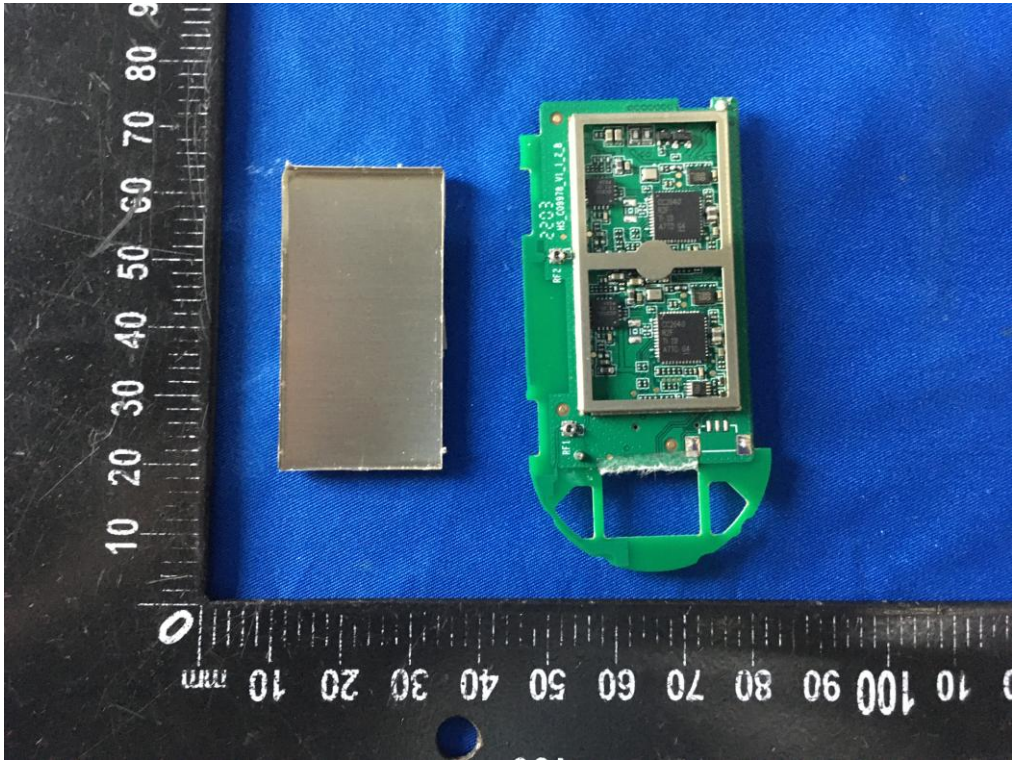


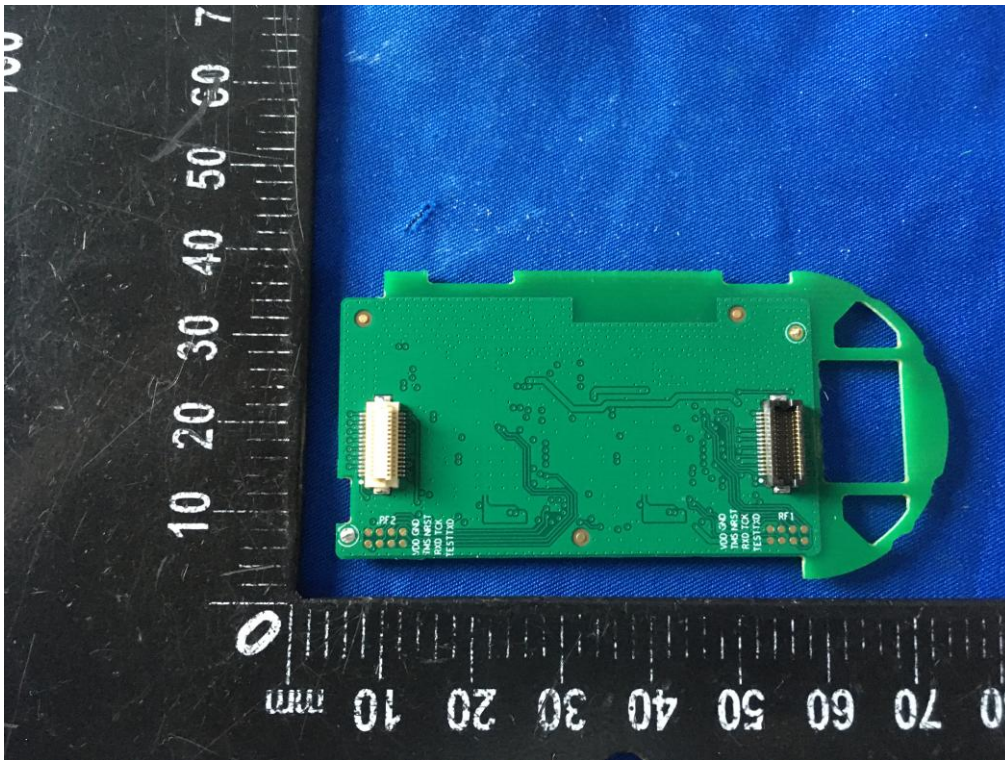
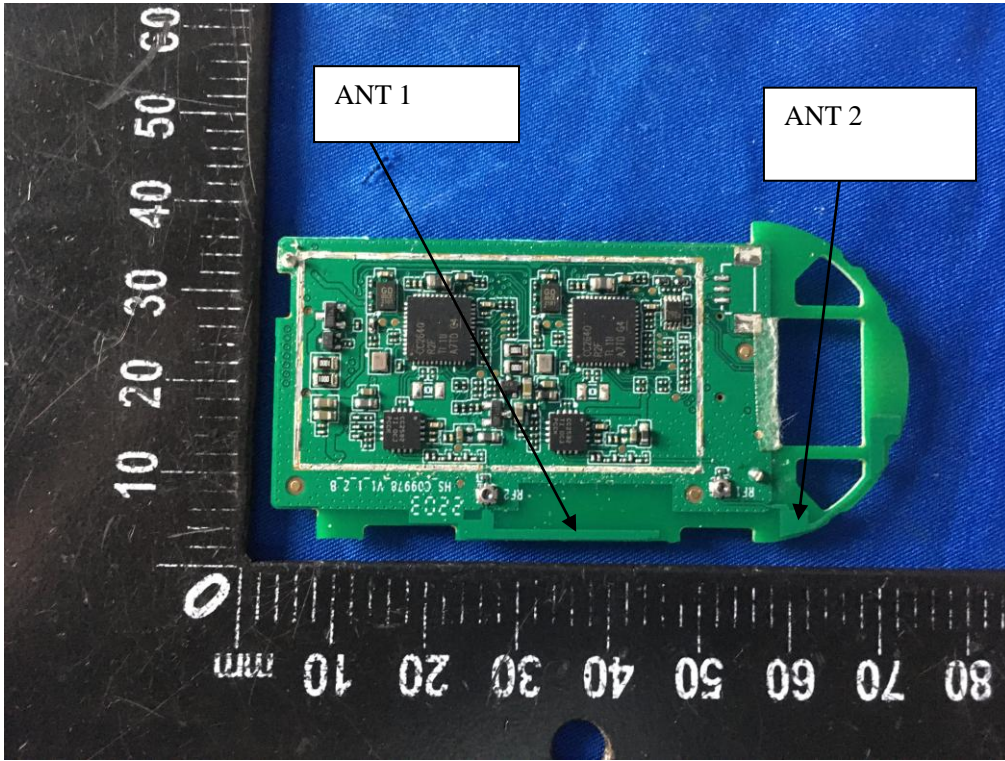


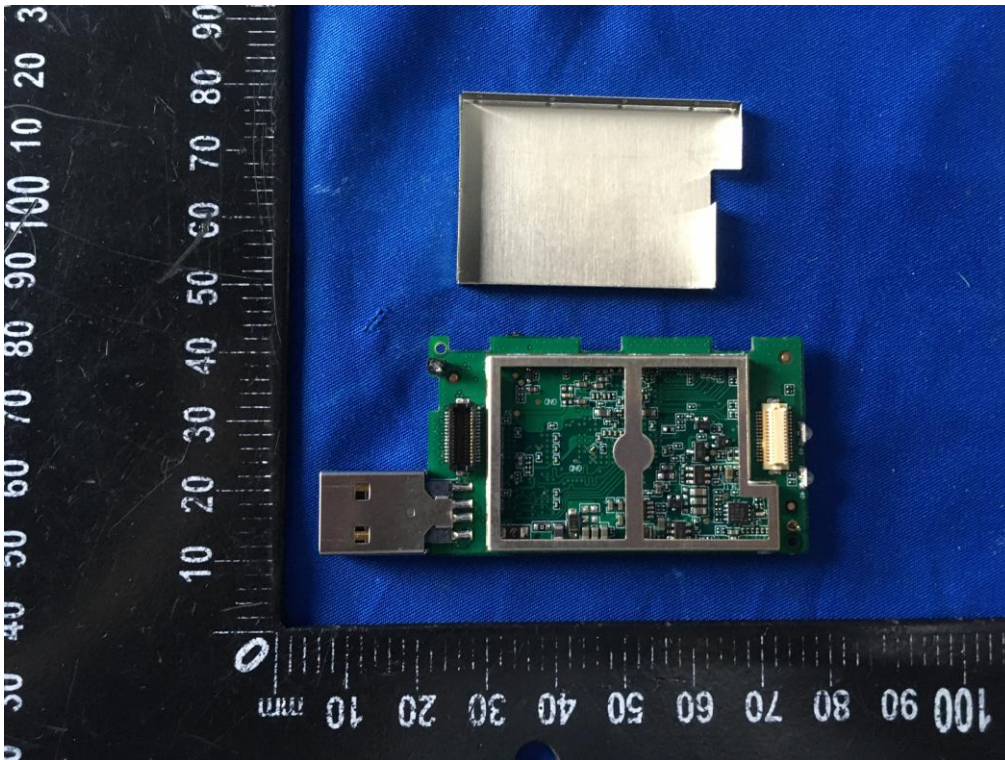
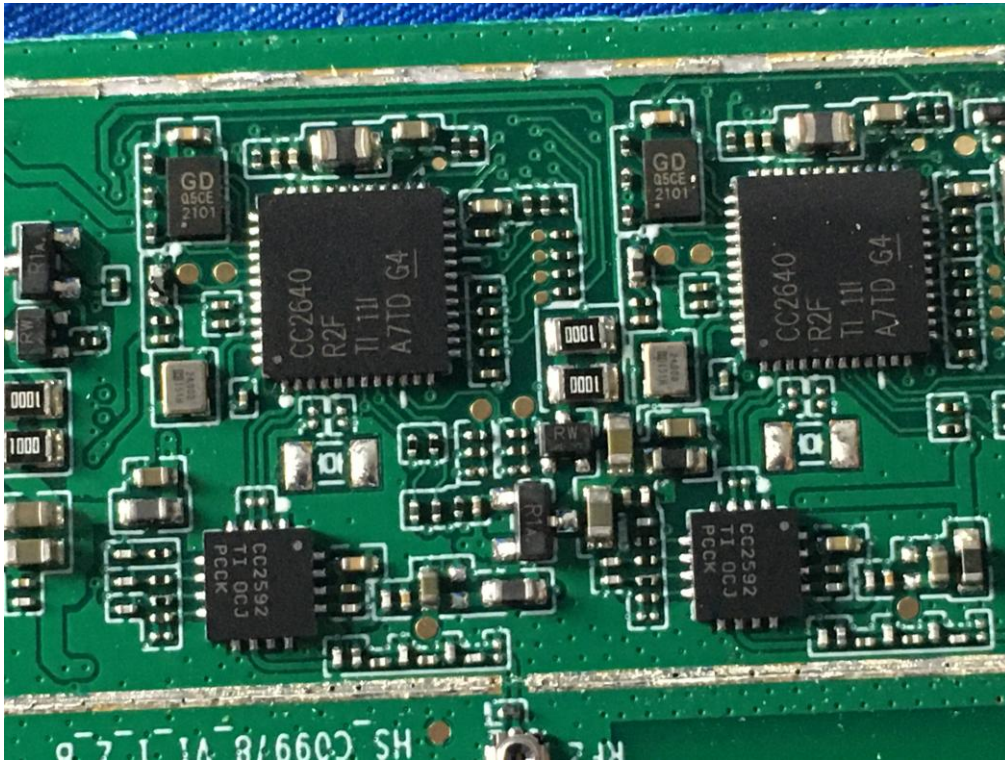


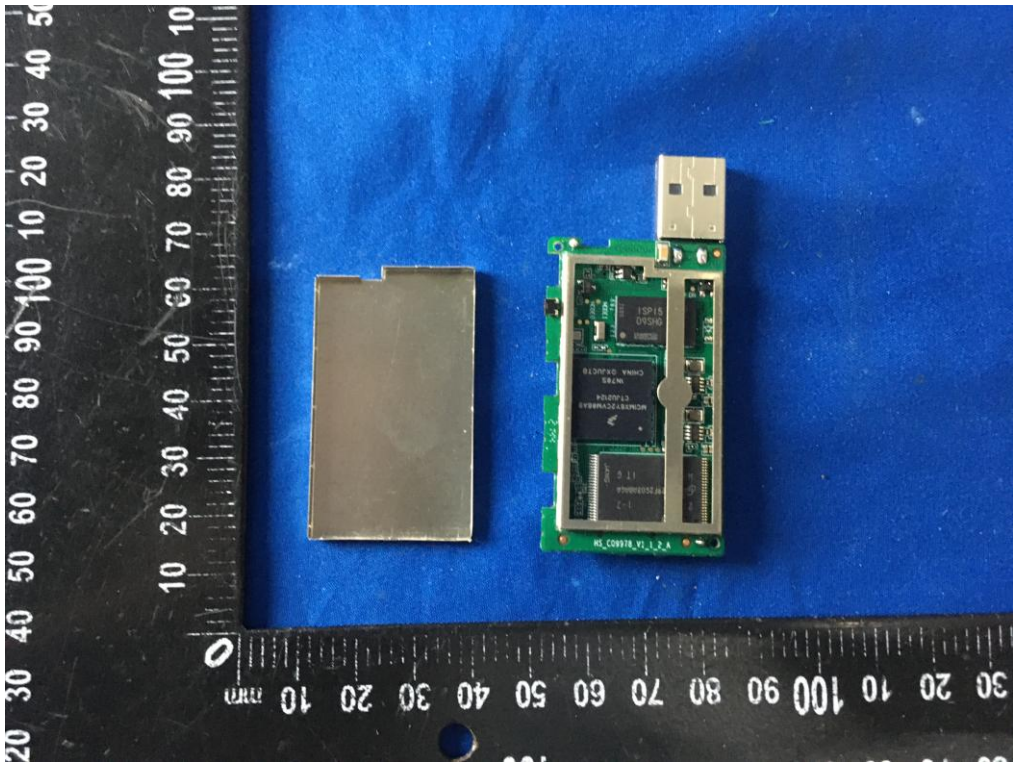
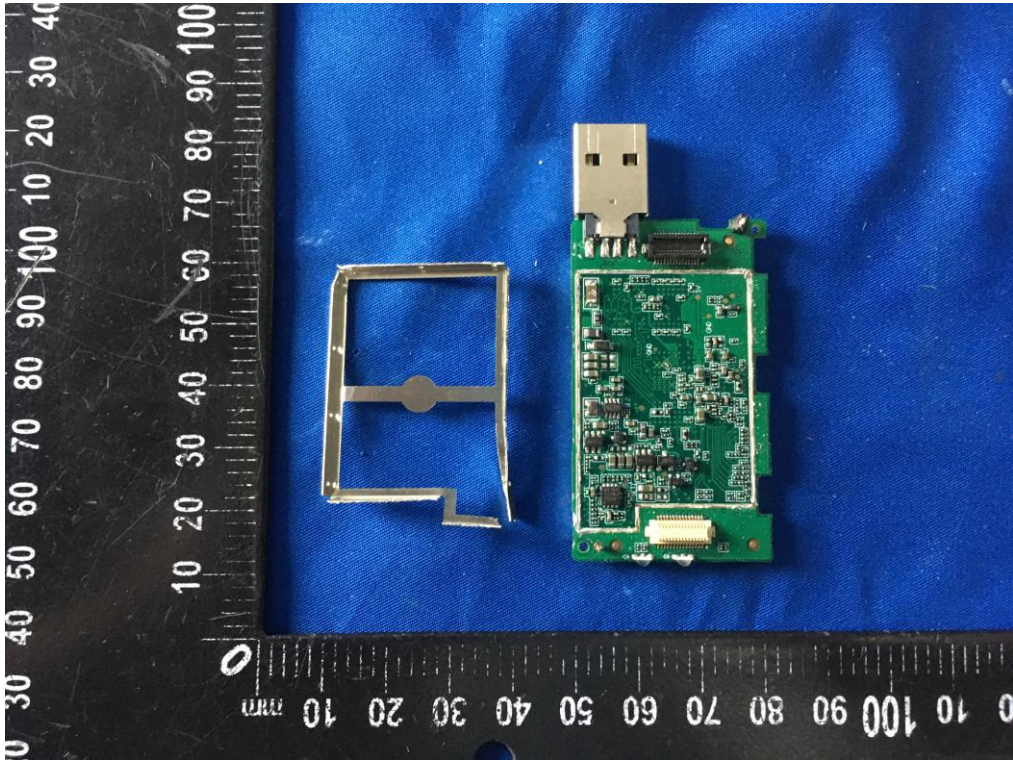


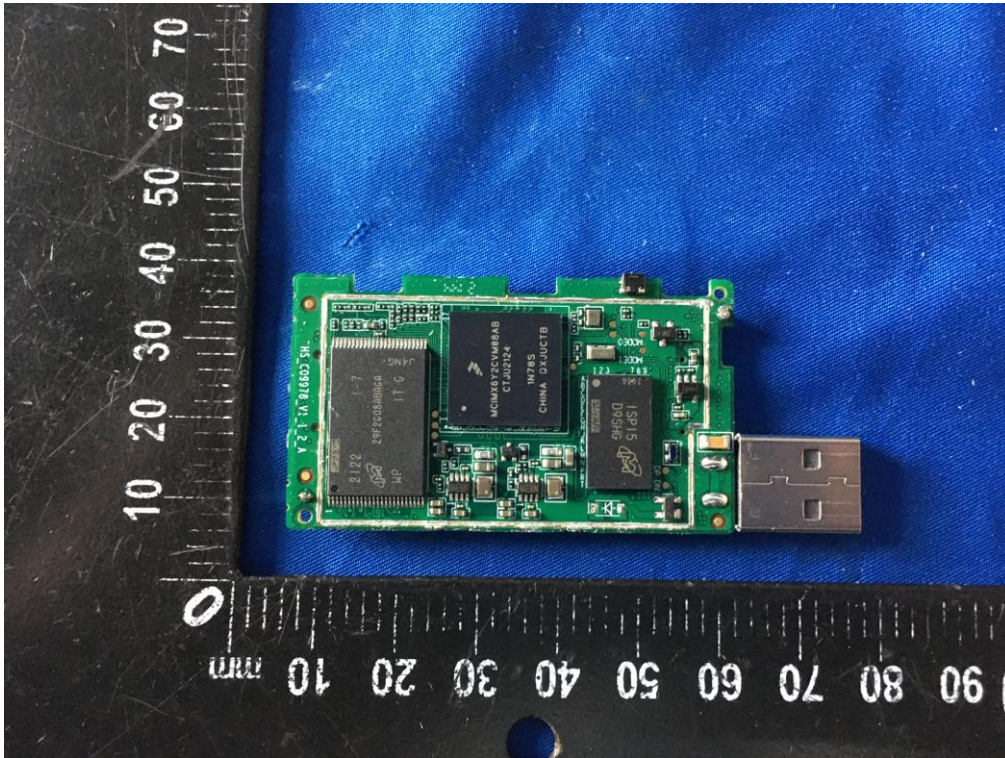
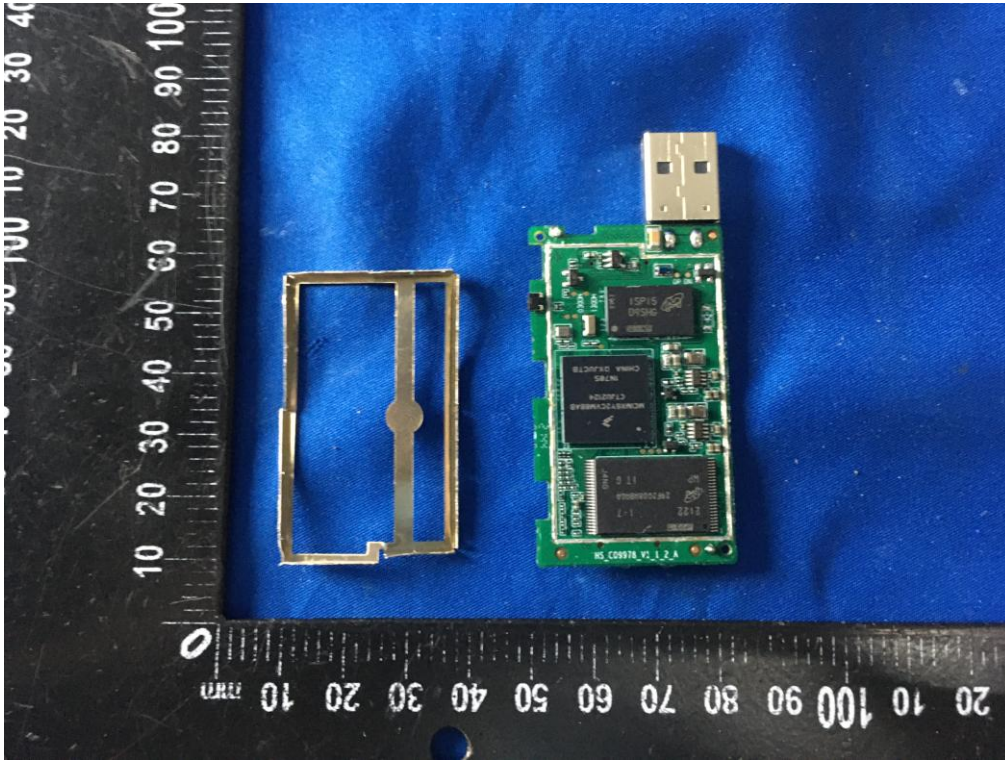


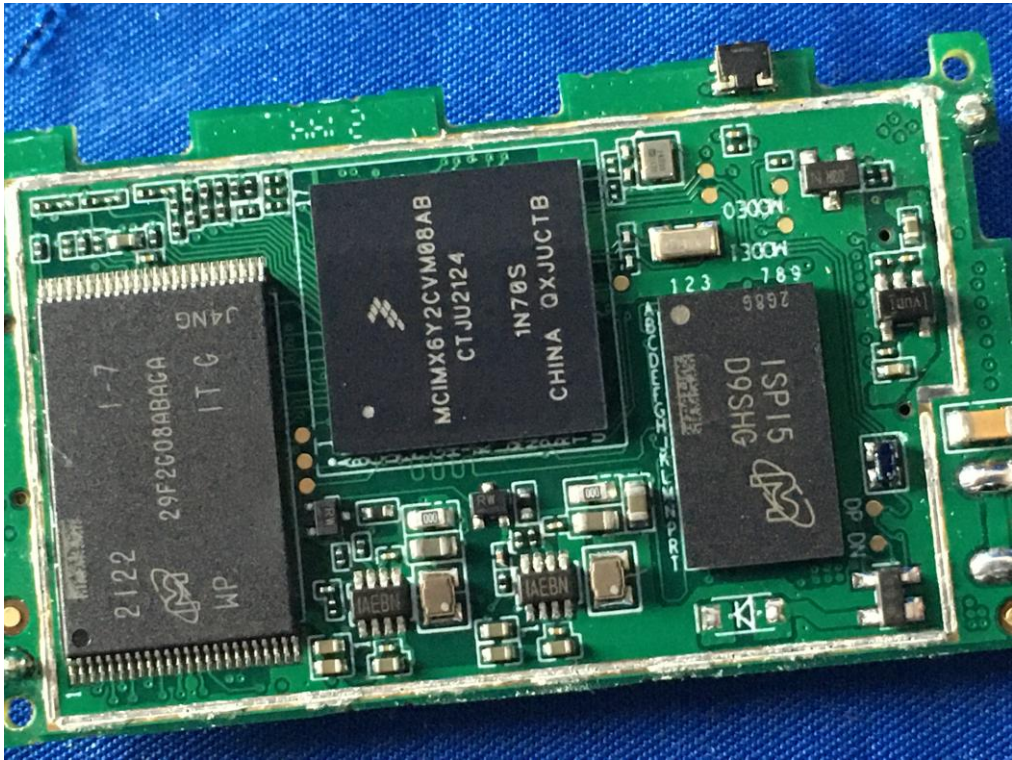












-----THE END OF REPORT-----