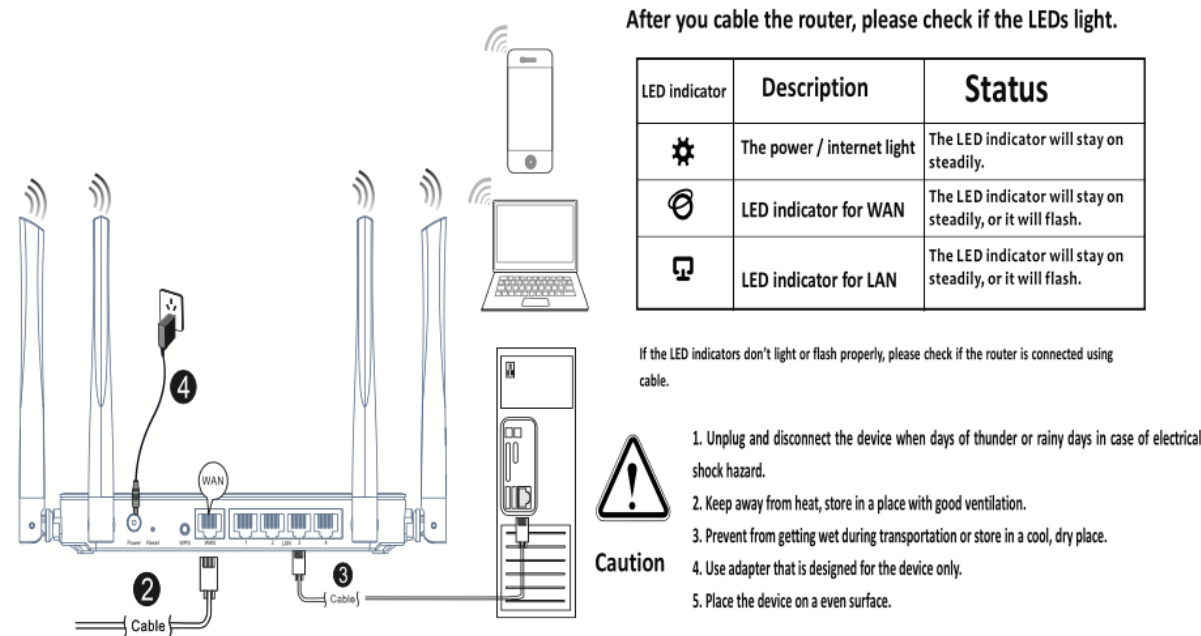


Setting Up
How to install your router

- 1. Turn the antennas, so they are positioned straight up and plug in your router to a power source.
- 2. Connect the Internet cable from your modem to the blue WAN port on your router. Wait until the indicator light on your router is solid.



- 3. Connect to the secure wireless SSID “Tantiv4 Rezrv 2G YH” or “Tantiv4 Rezrv 5G YH”
- 4. Password for connection “tantiv@4”
- 5. To open the webpage, go to 10.3.12.1 on your computer’s web browser

TANTIV4

NetSmart
Quick Installation Guide

Product Overview
Top View



Led Indicators (Right to Left)

- 1. **Power indicator:** The icon LED is solid green while the router is powered on. It will blink when the router goes through its self-diagnostic mode during every boot-up.
- 2. **2.4 GHz Indicator:** The Wireless LED is solid green when one or more clients are connected to the 2.4 GHz network. If the LED is blinking green, the router is sending or receiving data over the 2.4 GHz network.
- 3. **5 GHz Indicator:** The Wireless LED is solid green when one or more clients are connected to the 5GHz network. If the LED is blinking green, the router is sending or receiving data over the 5 GHz network.
- 4. **Internet Indicator:** The Internet LED blinks green while the router works to establish a connection.
- 5. **WAN Indicator:** The Internet LED is solid green when connected to the Internet. If the LED is blinking green, the router is sending or receiving data.
- 6. **LAN 1 through 4:** These numbered LEDs correspond with the numbered ports on the router’s back panel. If the green LED is solid, the router is connected to a device through that port. A flashing green LED indicates network activity over that port.

Back View



Ports (Right to Left)

- 1. **Power port:** Connect the included AC power adapter.
 - 2. **Reset button:** Press and hold for 10 seconds (until the power LED starts flashing) to reset the router to factory settings.
 - 3. **Internet port:** Connect an Ethernet cable to this blue gigabit (10/100/1000) port, and to a broadband Internet cable/DSL or fiber modem.
 - 4. **LAN ports**—Connect Ethernet cables to these yellow gigabit (10/100/1000) ports, and to wired devices on your network.
 - 5. **Adjustable antennas**—This router ships with four adjustable external antennas that should be connected to the router before powering it on.
- Note—For best performance, position the side antennas vertically as shown in the picture above.*

FCC Caution.

This device complies with part 15 of the FCC Rules. Operation is subject to the following two conditions:

- (1) This device may not cause harmful interference, and
- (2) This device must accept any interference received, including interference that may cause undesired operation.

Any Changes or modifications not expressly approved by the party responsible for compliance could void the user's authority to operate the equipment.

Note: This equipment has been tested and found to comply with the limits for a Class B digital device, pursuant to part 15 of the FCC Rules. These limits are designed to provide reasonable protection against harmful interference in a residential installation. This equipment generates uses and can radiate radio frequency energy and, if not installed and used in accordance with the instructions, may cause harmful interference to radio communications. However, there is no guarantee that interference will not occur in a particular installation. If this equipment does cause harmful interference to radio or television reception, which can be determined by turning the equipment off and on, the user is encouraged to try to correct the interference by one or more of the following measures:

- Reorient or relocate the receiving antenna.
- Increase the separation between the equipment and receiver.
- Connect the equipment into an outlet on a circuit different from that to which the receiver is connected.
- Consult the dealer or an experienced radio/TV technician for help.

This equipment complies with FCC radiation exposure limits set forth for an uncontrolled environment. This equipment should be installed and operated with minimum distance 20cm between the radiator & your body.

Note: 5150~5250MHz is Indoor use only