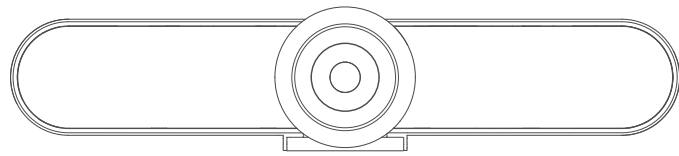


# 三折页 风琴折 双胶纸

尺寸: 120X113MM

## 视频会议终端

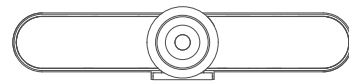
AIO Video Conferencing Unit



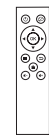
用户手册  
User Manual

## 包装清单

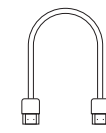
What's in the box



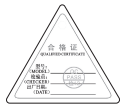
视频会议终端 X 1  
Video Conference Endpoint X 1



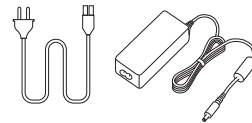
遥控器 X 1  
Remote Control X 1



HDMI线 X 1  
HDMI Cable X 1



合格证 X 1  
Qualification Certificate X 1



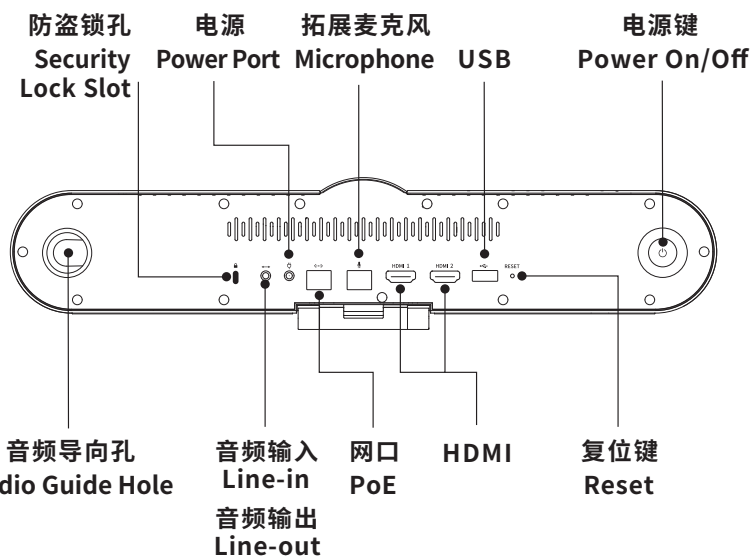
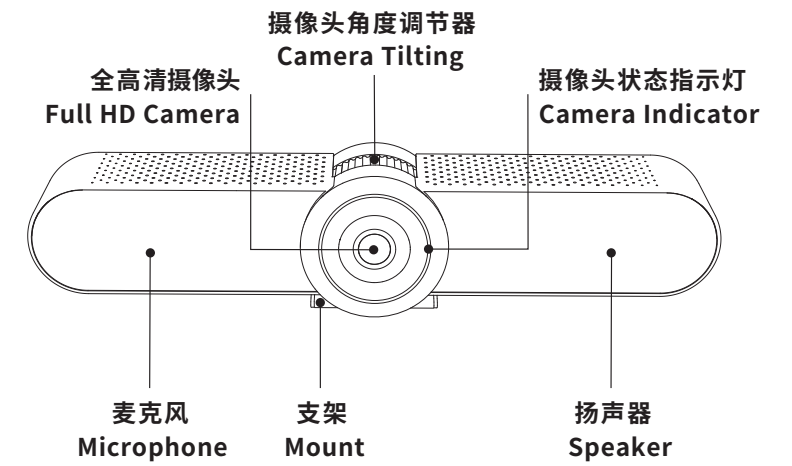
电源适配器 X 1  
AC Adapter X 1



用户手册 X 1  
Quick Installation Guide X 1

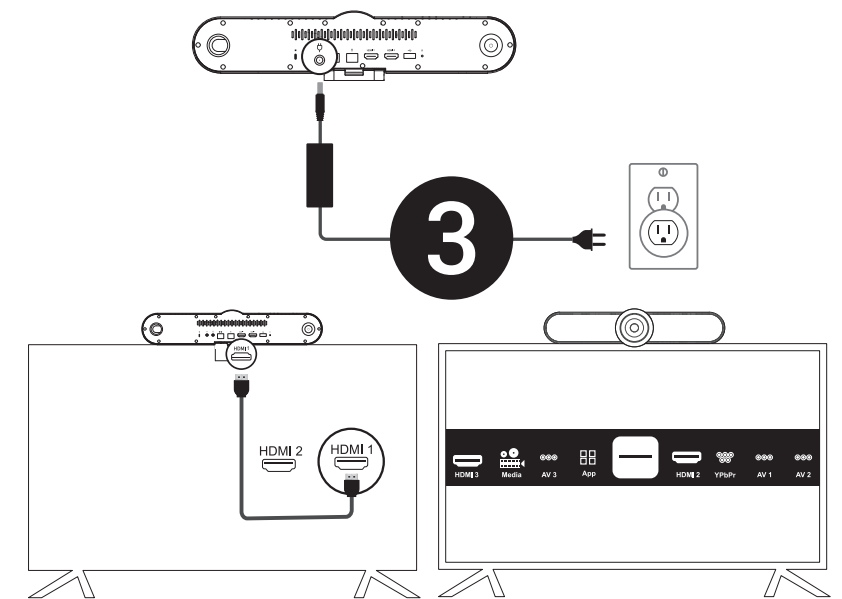
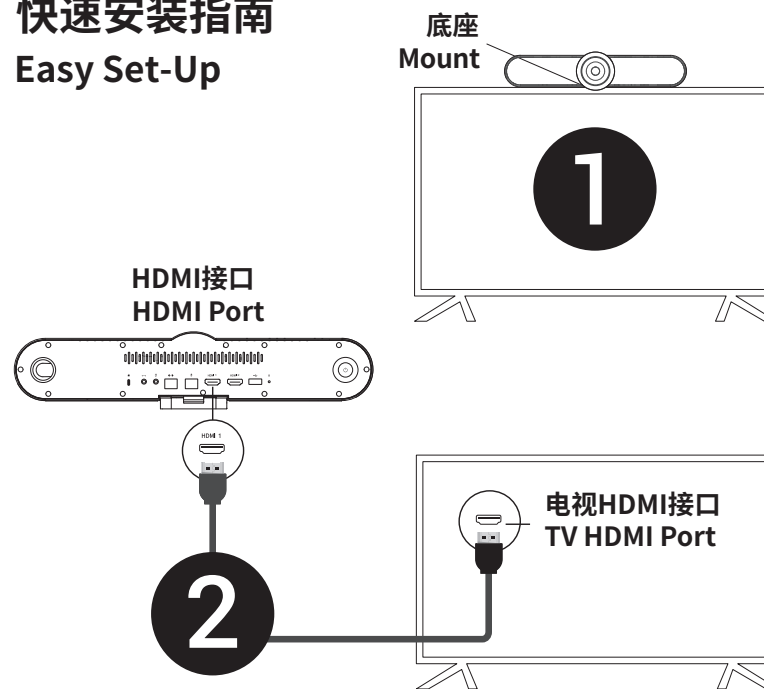
## 产品概览

Overview



## 快速安装指南

Easy Set-Up



将电视机切换到与视频会议终端连接的HDMI接口相对应的HDMI输入信号源, 然后请按照提示操作。

Select "Input Source" on your TV to receive the output of Video Conference Endpoint and follow the prompts.

## FCC WARNING

This device complies with part 15 of the FCC Rules. Operation is subject to the following two conditions: (1) this device may not cause harmful interference, and (2) this device must accept any interference received, including interference that may cause undesired operation.

Any changes or modifications not expressly approved by the party responsible for compliance could void the user's authority to operate the equipment.

NOTE: This equipment has been tested and found to comply with the limits for a Class B digital device, pursuant to Part 15 of the FCC Rules. These limits are designed to provide reasonable protection against harmful interference in a residential installation. This equipment generates, uses and can radiate radio frequency energy and, if not installed and used in accordance with the instructions, may cause harmful interference to radio communications.

However, there is no guarantee that interference will not occur in a particular installation.

If this equipment does cause harmful interference to radio or television reception, which can be determined by turning the equipment off and on, the user is encouraged to try to correct the interference by one or more of the following measures:

- Reorient or relocate the receiving antenna.
- Increase the separation between the equipment and receiver.
- Connect the equipment into an outlet on a circuit different from that to which the receiver is connected.
- Consult the dealer or an experienced radio/TV technician for help.

To maintain compliance with FCC's RF Exposure guidelines, This equipment should be installed and operated with minimum distance between 20cm the radiator your body: Use only the supplied antenna.