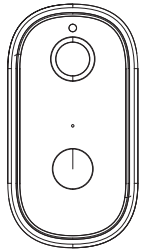


Waterproof wireless low power The camera consumes

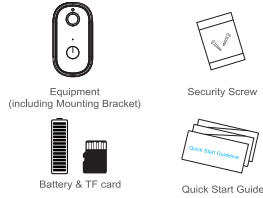
Quick Start Guide

* Please read it carefully before using the product

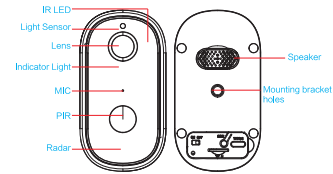


Package List

Please check and make sure the camera (hereinafter referred to as "The Equipment") is in good condition and all below parts are included after opened the package.



Appearance Introduction



- IR LED** The infrared light will turn on automatically when the ambient light is insufficient
- Light Sensor** It's used to collect ambient light values when the luminance is lower than 2Lux, infrared light will be enabled automatically.
- PIR** When human body moved in front of the equipment, the equipment will make notification to your mobile phone.
- Radar (optional)** When the human body moves in front of the device, the radar generates a trigger signal to the mobile phone

- Lens** Video image capture
Blue light flashes --- Pairing Status
Red light on --- Failed WiFi Connection
Blue light on --- Connected Successfully
Red & Blue light on together --- Connecting Wi-Fi
- MIC** To gather the environmental sounds and realize voice-voice intercom.
- Speaker** System sound and voice intercom
- Mounting bracket holes** Use bracket mounting screws to mount the bracket to the wall

Installation Guide

Please take out the bracket from the equipment as shown in the figure



- 1 Install the base on the wall using the mounting screw in the accessory package
- 2 Align the mounting bracket holes of the machine with the base screws for installation
- 3 Toggle the power ON / OFF to turn the camera on or off
- 4 TYPE-C interface
 - a. Garden light output port
 - b. Solar charging output port

- 5 Press the reset button for 5 seconds, waiting for the indicator light turn to red slow flash (The equipment should be in working condition, long press, sleep state is invalid)
- 6 TF card slot, install TF card for video storage

Equipment Connection

Thanks for choosing our product, Please scan the following QR codes to install the app on your mobile. Then set up your Equipment by following steps after it's done.

1. Download and install the Mobile APP

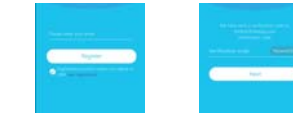


- 1) Scan the QR codes to download and install it
- 2) For Apple users, please search app "UBox" in the App store to download it
- 3) For Android users, please search app "UBox" in Google Play store to download the app

2. APP REGISTRATION

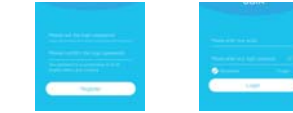
Open the app then input your E-mail address then press "Register". Check and select to agree the agreement then your E-mail box will get an verification code. (For better user's experience, please allow to open all permissions to avoid missing any notifications from the app.)

Input the "Verification code" and press "Next". (If you not found the mail you might find the code in your email spam box.)



Set the login password and confirm the login password Then press "Register" to next step (For your password safety, the password requires more than 8 characters plus a combination of letters)

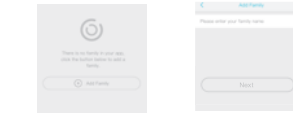
Enter your E-mail address, and input your login password. Then press "Login".



3. WI-FI CONNECTION

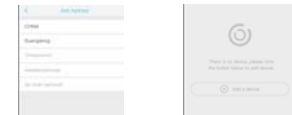
Press "Add Family" then set the room or position as per reminders.

Enter your family name and then press "Next".



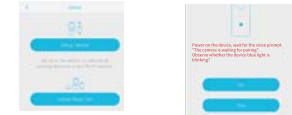
Input the necessary information just like Country, Province, then press "Done".

Press "Add a device" to add a smart device



Connect the device with power supply, and make sure your mobile phone is connected to an available Wi-Fi. Then press "Setup device".

After the power on the device, wait for the device blue LED are blinking Which means your device in pairing mode



If the device blue are not blinking, please press the power/Call key to wake up the device first, then hold and press the RESET button until the blue indicator to light up and then release. The device will reboot and enter the pairing state.

Set the device name and select the device location before setup



The app will input the Wi-Fi name automatically, please input the correct Wi-Fi Password. Then you can choose the "QR code configuration" or "Sound wave configuration".



QR code configuration: Select the QR code configuration then the mobile phone display a QR code. Use the QR code to scan to the QR code from the mobile phone.



Smart device basic settings Could set Storage management, Flip screen, Environmental mode, PIR detection, Sleep time, Power frequency, LED indicator, Device name. Could check the information of Device name, Device ID, Model, FW version, Manufacturer. Check for the FW updates.

Turn on/off the speaker
Screenshot
Playback switch Micro SD memory and Cloud storage
Take a video for the live view
Microphone - Speak to the smart device side.

The device will enter to the device list automatically. Setup success! The device is ready to use.



Notes about PIR detection
User can change the PIR detection enable in device settings. Recommended to set enable of "Double" or "Long" to reduce the false alarm for better power efficiency.

Double Double PIR detection
Long Long PIR detection
Double Double PIR detection
Long Long PIR detection



Check "my account" name and change password.
Check and purchase the Cloud storage.
Check and purchase the Micro SD card (optional).
Check and add my friends ID and permission.
Set the default voice and resolution for the device.
Check the App version.

4. USING THE APP



Enter to select your family or smart device location
Turn on/off the push notification, Settings, Sharing, Cloud storage, Delete the device.,
Press to enter the preview screen.
Press to add a smart device
Account and value-added account management



Click the "Calendar" icon on the right top corner, then choose the date to playback the videos from cloud storage.
Choose the desired date to check all videos from the cloud.

- #### 4.Attention!
- 1) This device is powered by Lithium polymer battery and is expected to be used for 50 months when fully charged. The app on your phone will have prompt if the battery is low. Please charge the device promptly after received the prompt.
 - 2) Please make sure your device can receive WIFI signal while installing, especially outdoor installation. If WIFI is not available or signal weak, Please use WIFI signal amplifier to increase.
 - 3) This device is a low-power smart product which supports remote wake-up by APP. PIR human body detection wake-up, wake up by doorbell.
- It will enter transmission automatically and guides the next wake-up after wake-up and working 30 seconds.

Technical Specification

Resolution	1920*1080
Field of Angle View	2.5mm @F2.0/155°
IR LED	0*950nm
Wi-Fi	802.11 b/g/n
Audio	Two-way talk with noise cancellation
Recording	TF card (Above C10 high speed brand card is needed)
Storage	Cloud Storage or 64/16G/32G TF card
Battery	2pcs 18650 batteries are required.
Monitoring	Motion Detection, Remote Live View
Notifications	Push Notifications within 1 second
Device Wakeup	Within 600 ms
Power Consumption	Power Consumption Standby:120 uA, Working:170 mA

Function Introduction

- Two 18650 specification batteries work regularly for 50 months
- Million HD Pixels with Ultra-thin 2.6MM Wide-Angle Lenses

- Support waking up device by mobile phone within 1 second.
- 2.4G Wi-Fi connection
- High quality two-way talk with noise cancellation
- Support PIR human body infrared detection. It will push alarm information to your mobile phone APP immediately when someone is at the door
- Day and night mode can be switched automatically. The image is clearly and visible for your safety and family security no matter its day or night.

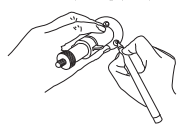
Q&A

Q: The device cannot connect to WIFI?
A: 1. Please confirm that the wireless network to be connected is the 2.4G protocol.
2. Make sure the indicator light is in the slow red light state
3.The password is correct, make sure there is no extra spaces.
Q: The device is online and there is a trigger event, but the mobile phone cannot receive the push message
A: The app on the mobile has turned on "background" function and has enabled the notification function on application permission. Turn off "battery optimization" and turn off the function of end app when phones in standby (The mobile phone manufacturer's optimization method is inconsistent. Please take the actual situation as the standard.)
Q: What power supply mode does the device support?
A: 1. The device can work with low 18650 battery alone
2. You can charge the device through TYPE-C

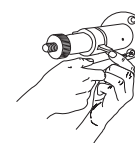
Tip: There will be no further notification of any change of the above functions. Please take the actual object as the standard. Thanks!

Install your Solar Panel (Optional)

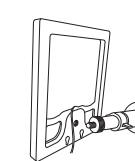
1. Please complete the battery camera setup in the App prior to installing the solar panel.
Pick an unshaded spot for best sun exposure. The solar panel should be installed where it will receive several hours of direct sun all day.
2. Mark your spot
Place the solar panel mounting arm mark where you plan to install and mark the screw hole position with a pencil.



3. Drill the holes
Optional: You may opt to use a drill bit to drill the holes where you have previously marked.
For mounting surfaces that are brick, concrete, or stucco, please use the plastic anchors. You may need to use a hammer to install the anchors.
For mounting surfaces that are wood or vinyl, you can omit the anchors, and use the screws directly.



5. Attach the solar panel
Attach the solar panel onto the mounting arm, ensure that it is installed correctly.
Note: You may adjust the angle of the solar panel for better sun coverage. Simply push the adjustment screw on the mounting arm, adjust to desired angle, and re-tighten the screw.



6. Plug the cable
Lift up the solar panel charging port into the Ave. Let's start charging!

4. Install the mounting arm
Use a screwdriver to secure the mounting arm to the wall, tighten securely.

FCC Statement

This equipment has been tested and found to comply with the limits for a Class B digital device, pursuant to Part 15 of the FCC Rules. These limits are designed to provide reasonable protection against harmful interference in a residential installation. This equipment generates and can radiate radio frequency energy and, if not installed and used in accordance with the instructions, may cause harmful interference to radio communications. However, there is no guarantee that interference will not occur in a particular installation. If this equipment does cause harmful interference to radio or television reception, which can be determined by turning the equipment off and on, the user is encouraged to try to correct the interference by one or more of the following measures:

- Reorient or relocate the receiving antenna.
- Increase the separation between the equipment and receiver.
- Connect the equipment into an outlet on a circuit different from that to which the receiver is connected.
- Consult the dealer or an experienced radio/TV technician for help.

Changes or modifications not expressly approved by the party responsible for compliance could void the user's authority to operate the equipment.
The distance between user and device should be no less than 20cm.