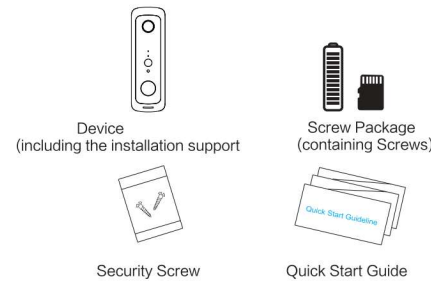


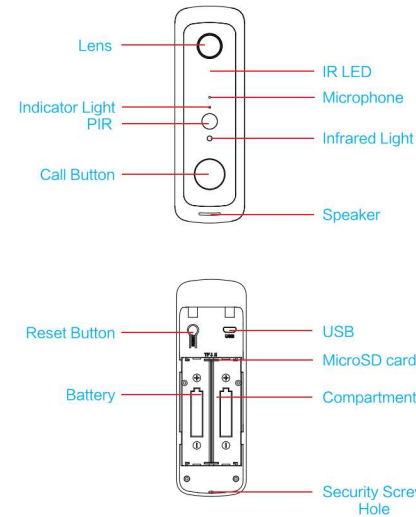
Low Consumption Smart Wireless Doorbell Quick Guide

Package Contents

After opening the package, please check the camera ("The Device") to verify whether the following parts are complete.



Appearance

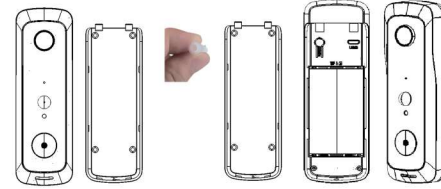


- IR LED** In the event of inadequate ambient light, turn on the IR LED to increase the brightness.
- Light Sensor** To collect the ambient brightness value, and when the illumination is less than 2Lux, the infrared lamp is enabled.
- Microphone** Used to collect ambient sound and record vocal dialogue.
- Call Button** Short-click can activate to inform users that someone is visiting and trigger a notification.
- PIR** When someone moves in front of the Device, PIR activates recording and sends a notification to the connected cell phone.
- Lens** Used to record images and video.
- Indicator Light** When the Blue Indicator Light is blinking, the Device is in the "Configuration" status. When the Red Indicator Light is always ON, the WiFi connection has failed. When the Blue Indicator Light is always ON, the Device is successfully connected. When the Red and Blue Indicator Light are ON at the same time, the Device is not connected to WiFi. When the Red and Blue Indicator Light are OFF at the same time, the Device is OFF or STAND-BY.
- Speaker** Used to emit a prompting noise and support two-way conversation.
- Reset Button** Long press 5 seconds to restore factory settings in working status.
- USB Interface** Used to charge the Device through the MicroUSB Interface.
- MicroSD card** MicroSD card slot. Maximum supported storage capacity is a 32Gb MicroSD card.

Battery Compartment Two 18650 specification batteries are required, be aware of negative and positive.

Installation Guide

As shown by the following pictures, remove the rear panel.



- Affix the bracket to the wall by using the installation screws in the accessory pack (alternatively, universal magic stickers can be used to affix to tempered glass or stainless steel).
- Put the 18650 battery into the battery compartment (note the positive and negative directions).
- Press the reset button for 5 seconds, waiting for the indicator light to turn to red slow flash (The device should be in working condition, long press, sleep state is invalid).
- Cover the battery lid, align the device and the bracket, push down and lock the security screws to complete the installation.

Bracket (Matching)

- Remove the backplane. Operate as the picture shown, please remove the backplane.
- Install the mounting plate to the wall. Use the mounting screws inside the kit. Mount the bracket on the wall. (Or use 3M glue on tempered glass or stainless steel).

- Installation of machine mounting bracket. Align and push down the clamps of the equipment and fixing bracket, lock the anti-disassembly screw, and complete the installation.

Buzzer Matching (this device needs to be purchased separately)

Matching: Press and hold the buzzer volume key for 4 seconds, the LED Light will turn ON. Next, press the doorbell button within 5 seconds. When the buzzer LED blinks quickly, the matching is complete.

Reset: Press and hold the buzzer volume key for 10 seconds. The matching resets.

Device Connection

Thanks for choosing our product. Please scan the following QR codes to install the app on your mobile. Then set up your device by following steps after it's done.

App Installation
Scan the QR codes below or Search "UBox" from App Store (for iOS devices) / Google Play Store (for Android smart phones) to download and install the App.

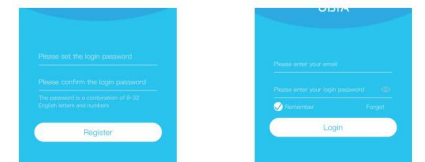


App Registration

- Open the App, enter your mobile phone number or email address and click to agree the user agreement, then click "Register" to get the verification code. (For a better user experience, please allow all the permissions to avoid missing any notifications.)
- Enter the verification code and click "Next". (If you couldn't find the code in your mailbox, please check your spam mailbox.)



- Set the login password and click "Register" to complete the registration. (For your password security, the password requirement is a combination of letters and numbers more than 8 digits.)
- Enter the phone number or email address used for registration and enter the password, then click "Login".

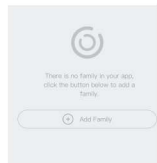


* Before using this product, please read the Quick Guide carefully and keep it for future reference.

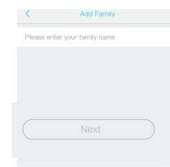
V1.0

Device Connection

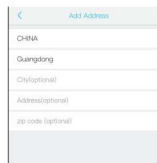
1. Click "Add Home or Device Installation Location" and enter the family name as prompted to add an address.



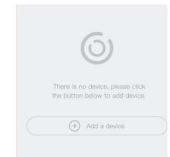
2. Enter your family name and click "Next".



3. Enter the required information for the country and region, then click "Done".



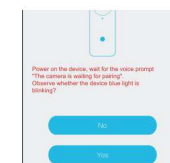
4. Click to add a smart device.



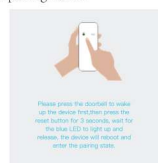
5. Power on the device and click to install the smart device.



6. After the device is powered on, wait for the voice prompt "The device is waiting for pairing". That means your device is in pairing mode.



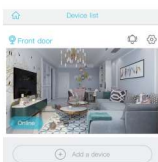
7. If you do not hear the voice prompt, please press the doorbell to wake up the device first, then hold and press the reset button for 3 seconds, wait for the blue LED to light up and release. The device will reboot and enter the pairing mode.



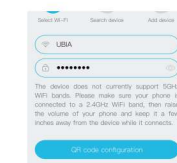
9. QR code configuration. Select QR code configuration and place the screen of the mobile phone 10cm away from the device. Please keep the camera facing the QR code and release it when you hear the prompt tone.



11. After the setup is complete, the device will enter the device list automatically. Congratulations! The device is ready to use.



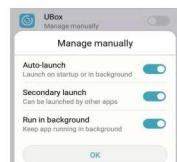
8. The App will be input the Wi-Fi name automatically. Please input the Wi-Fi password. You can choose the QR code configuration or sonic configuration.



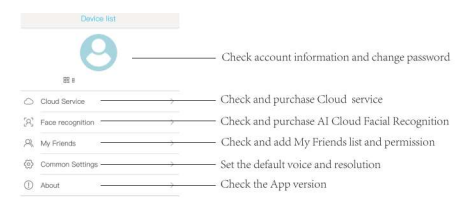
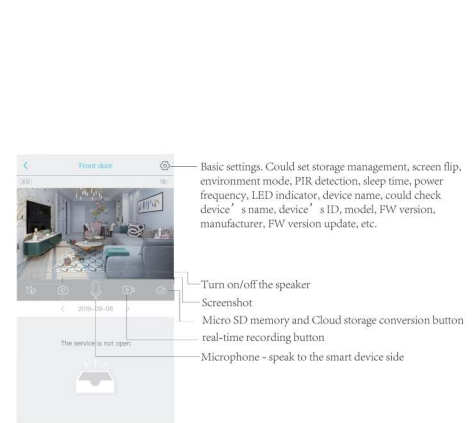
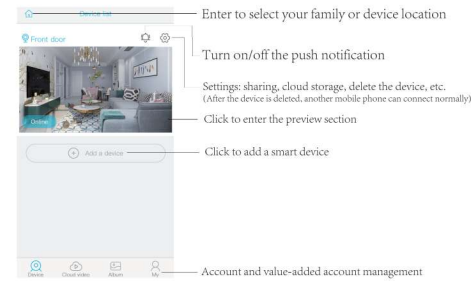
10. Select the family name or device location then click "Done".



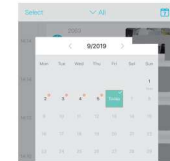
Android User Open Notification Settings Open App and Select My-> My Friends -> Push Settings-> Auto run-> Find UBox Open Auto Management-> Click UBox Manual Management again -> Allow Self-Start, Allow Associated Start to Open, Allow Later Activities to Open -> Click OK



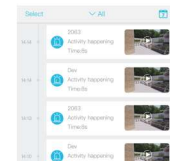
Using the App



Click the "Calendar" icon in the top right corner and select the date to playback all the cloud videos for the current day.



Select the date you want to view all the cloud videos for that day.



Warnings

- The device is equipped with a rechargeable lithium battery. The battery life will be affected by the device wake-up times and the number of wake-ups. Therefore, the PIR sensor alarm detection function will be used when in an environment of a lot of people. It is recommended to turn off or set the device to low sensitivity to reduce device wake-up and call time then extend battery life. Please charge the battery immediately when the battery is low.
- Put the device in range of your router. Please make sure the network is normal in the installation environment and check whether the Wi-Fi is covered, especially installing outside the board/door. If the Wi-Fi signal is weak, you need to select the relay setting or enhance the Wi-Fi relay improvement signal.
- This device is a low-power intelligent product. It can support App remote wake-up, PIR wake-up, doorbell wake-up, and will enter sleep mode automatically for a short time after each wake-up. You can set up the work time in the App settings.
- In mainland China the App couldn't receive Google's push messages. You need to turn on the App's self-starting function to receive push messages.
- This device provides free cloud storage and face recognition services for one month. If you want to continue using these value-added services after the free trial period, you need to purchase in the App.

UBOX

User Guide

This manual is for reference only. The App will be modified as the version is updated.

Technical Specification

| | |
|---------------|---|
| Resolution | 1920*1080/1280*720 (Matching) |
| Field of View | 1.7mm@F2.4/166° |
| IR LED | 6 850nm high power infrared lamps, 5-10 meters for night vision |
| WIFI | 802.11 b/g/n supported |
| Audio | Two-way speaking, with echo removal function |
| Recording | MicroSD card (Above C10 high speed brand card is needed) |
| Storage | Supports up to 32Gb MicroSD Card |
| Battery | 18650 battery(LI-Ion,2600mAh) |
| Push | Quick Push within 1 second |
| Prompting | Press/PIR/remote cell phone activation |
| Power | Standby current:120 uA Working current:170 mA |

Q&A

Q: Why can't the device connect to WIFI?

- A: 1. Please confirm that the WiFi connection adheres to the 2.4G protocol.
2. Confirm that the Red Indicator Light is blinking slowly.
3. Check whether the account name and password are correct, and whether there are too many characters.

Q: The Device is online, and there is a trigger event, but the cell phone does not receive any push notifications?

A: Check whether the app has "Automatic Starting" activated, and whether the "Application Authority" has the notification function enabled. Disable "Battery Optimization" and "Close the app when in the background" and "Always On Display" (depending upon the situation, consider different optimization modes for different cell phone manufacturers).

Q: What kinds of power supply modes are supported?

- A: 1. The Device can use the battery independently to work.
2. USB is available to charge the Device.

Q: Does the Device support 3G?

A: 3G cell phones are not supported, only 4G is supported.

Introduction to Functions

- LONG BATTERY LIFE:** The capacity of the 18650 battery is 2600mAh, which equates to 6 months of battery life.
- HIGH DEFINITION:** Million High Definition Pixels within the Ultra-Thin 1.7MM Lens.
- ANYWHERE, ANYTIME:** Remote Cell phone activation (via the app) is supported.
- 2.4G Wi-Fi connection supported.
- Clear two-way speaking.
- PIR supported. When someone is wandering outdoors, warning information is immediately sent to the connected cell phone via the app.
- Automatic switching between Day/Night mode, with clear pictures to safeguard you and your family members.

* Tip: There will be no further notification of any change of the above functions. Please take the actual object as the standard. Thanks!

NOTE
Please choose the correct 18650 battery to use with the smart doorbell!



The batteries are not included!

FCC Statement

This equipment has been tested and found to comply with the limits for a Class B digital device, pursuant to part 15 of the FCC Rules. These limits are designed to provide reasonable protection against harmful interference in a residential installation. This equipment generates, uses and can radiate radio frequency energy and, if not installed and used in accordance with the instructions, may cause harmful interference to radio communications. However, there is no guarantee that interference will not occur in a particular installation. If this equipment does cause harmful interference to radio or television reception, which can be determined by turning the equipment off and on, the user is encouraged to try to correct the interference by one or more of the following measures:

- Reorient or relocate the receiving antenna.
- Increase the separation between the equipment and receiver.
- Connect the equipment into an outlet on a circuit different from that to which the receiver is connected.
- Consult the dealer or an experienced radio/TV technician for help.

Caution: Any changes or modifications to this device not explicitly approved by manufacturer could void your authority to operate this equipment.

This device complies with part 15 of the FCC Rules. Operation is subject to the following two conditions: (1) This device may not cause harmful interference, and (2) this device must accept any interference received, including interference that may cause undesired operation.

RF Exposure Information

The device has been evaluated to meet general RF exposure requirement. The device can be used in portable exposure condition without restriction.