

# Intelligent visual ceramic ear spoon V105 User manual

open

①

Scan the QR code and  
download the app



②

Open the WIFI Visible  
and click the 'start'



③

Hold the power button  
to turn it on

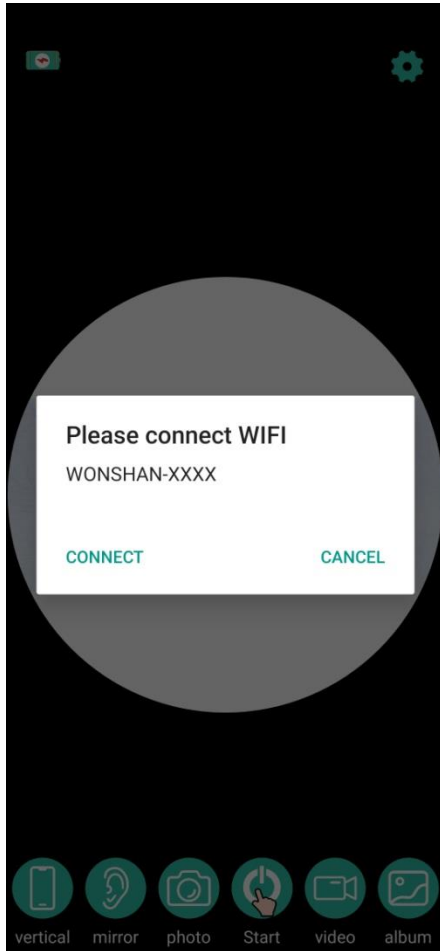


Hold the power  
button for 3sec

## WiFi connect

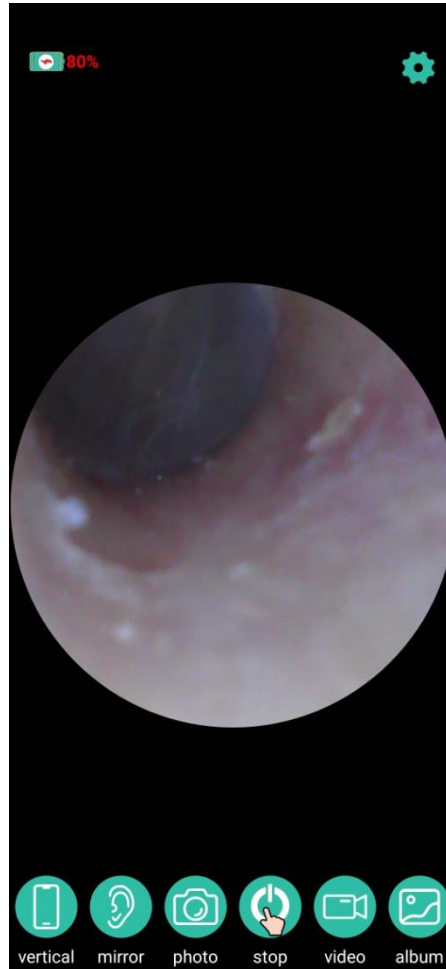
①

Connect the WiFi “WONSHAN-XXXX”



②

Return to the app and click the \_x0002\_start\_x0002\_ button to access the app



## Replace the ear spoon head

Spiral type ear spoon head

When installing the ear spoon, tighten it clockwise



Remove the ear spoon by turning it anticlockwise

Be sure to install it before use to prevent the ear spoon from falling off

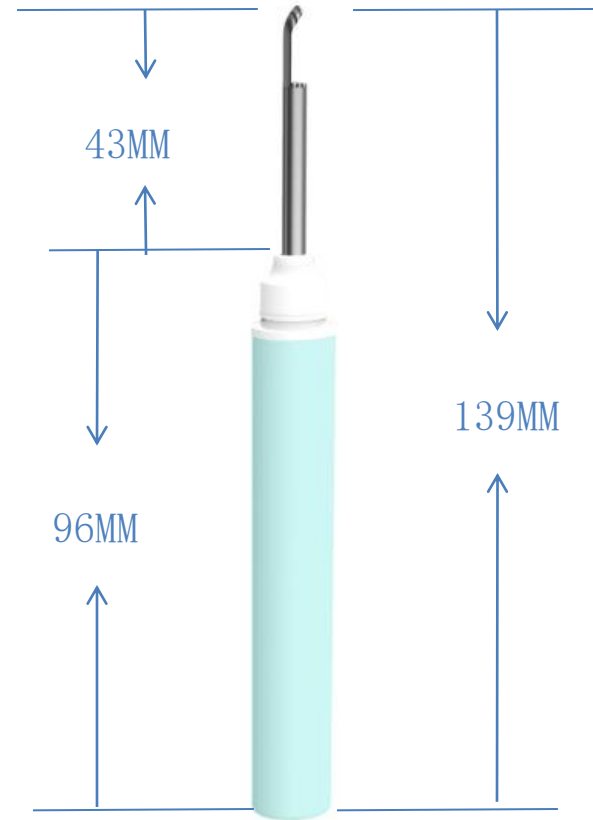
Accessories  
display

①

PC transparent ear spoon x 2



Product size



# Trouble shooting

Failure phenomenon	Solution
Power on. No response	<ul style="list-style-type: none"> <li>• Try Turning it on a few more times;</li> <li>• Please use your own charging device for charging, Charging time is 1 h.</li> </ul>
The camera lights aren't working	<ul style="list-style-type: none"> <li>• Please reboot the device; Check that the equipment is turned on.</li> </ul>
app quits unexpectedly	<ul style="list-style-type: none"> <li>• Reboot your phone; Or uninstall already installed APP, Scan the Qr code again to download the installation.</li> </ul>
The equipment indicator light is red	<ul style="list-style-type: none"> <li>• Please use your own charging device for charging, Charging time is 1 h.</li> </ul>
After the device is connected to the appReal time image not displayed	<ul style="list-style-type: none"> <li>• Disconnect the phone from the device WiFi, Reset the device, Reconnecting WiFi.</li> </ul>
WiFi connection is unstable, Off and on	<ul style="list-style-type: none"> <li>• Please restart the app and the device, Reconnecting device WiFi .</li> </ul>
If the above operation fails to solve the problem, Please contact our customers. We will provide further solutions for you.	

# Points to note

- 1、Cleaning the Lens, Professional Alcohol Swabs are recommended.
- 2、Please use this product in an environment where no one is running or fighting, To avoid impact.
- 3、This product is not suitable for children under 8 years of age.
- 4、Children are not allowed to use this product alone, So as not to inadvertently cause harm.
- 5、Do not use endoscopy in liquids, To prevent damage from water ingress.
- 6、This product has built-in rechargeable lithium battery, If not used frequently, Must also be recharged once a month.
- 7、In use, The temperature of the product will rise slightly (Up to 35 °C) , Please feel free to use.
- 8、To ensure the best use experience, When picking ears for children, Please keep the child in a sitting position.
- 9、For your ear canal clean and safe, The tip of the spoon is loose or used more than 30 times, Be sure to replace the ear spoon.

## Product parameters

### Brand

Product name      Intelligent visible ear pick stick  
Model              E8  
Host weight        19g  
Network Standard   IEEE 802.11b/g  
Antenna             Built-in antenna  
Operating frequency    2.4Ghz  
Image transmission rate   30fps  
Image Sensor        CMOS  
Working Environment temperature   -10-50 °C  
Battery             350mAh lithium battery  
Battery life        About 120 minutes  
Charging time      About 1 hour  
Input current       DC 5V 500 mA  
Lens diameter      4.5 mm  
Optimum focal length    1.5 ~ 2 cm  
pixel               3 million  
Gravity sensor      3 axis

## After sale warranty

User information	
User name:	contact number:
To address:	
Sales merchants:	contact number:

This device complies with part 15 of the FCC Rules. Operation is subject to the following two conditions: (1) This device may not cause harmful interference, and (2) this device must accept any interference received, including interference that may cause undesired operation.

Any Changes or modifications not expressly approved by the party responsible for compliance could void the user's authority to operate the equipment.

- Note: This equipment has been tested and found to comply with the limits for a Class B digital device, pursuant to part 15 of the FCC Rules. These limits are designed to provide reasonable protection against harmful interference in a residential installation. This equipment generates uses and can radiate radio frequency energy and, if not installed and used in accordance with the instructions, may cause harmful interference to radio communications. However, there is no guarantee that interference will not occur in a particular installation. If this equipment does cause harmful interference to radio or television reception, which can be determined by turning the equipment off and on, the user is encouraged to try to correct the interference by one or more of the following measures:
  - -Reorient or relocate the receiving antenna.
  - -Increase the separation between the equipment and receiver.
  - -Connect the equipment into an outlet on a circuit different from that to which the receiver is connected.
  - -Consult the dealer or an experienced radio/TV technician for help.

The device has been evaluated to meet general RF exposure requirement. The device can be used in portable exposure condition without restriction.