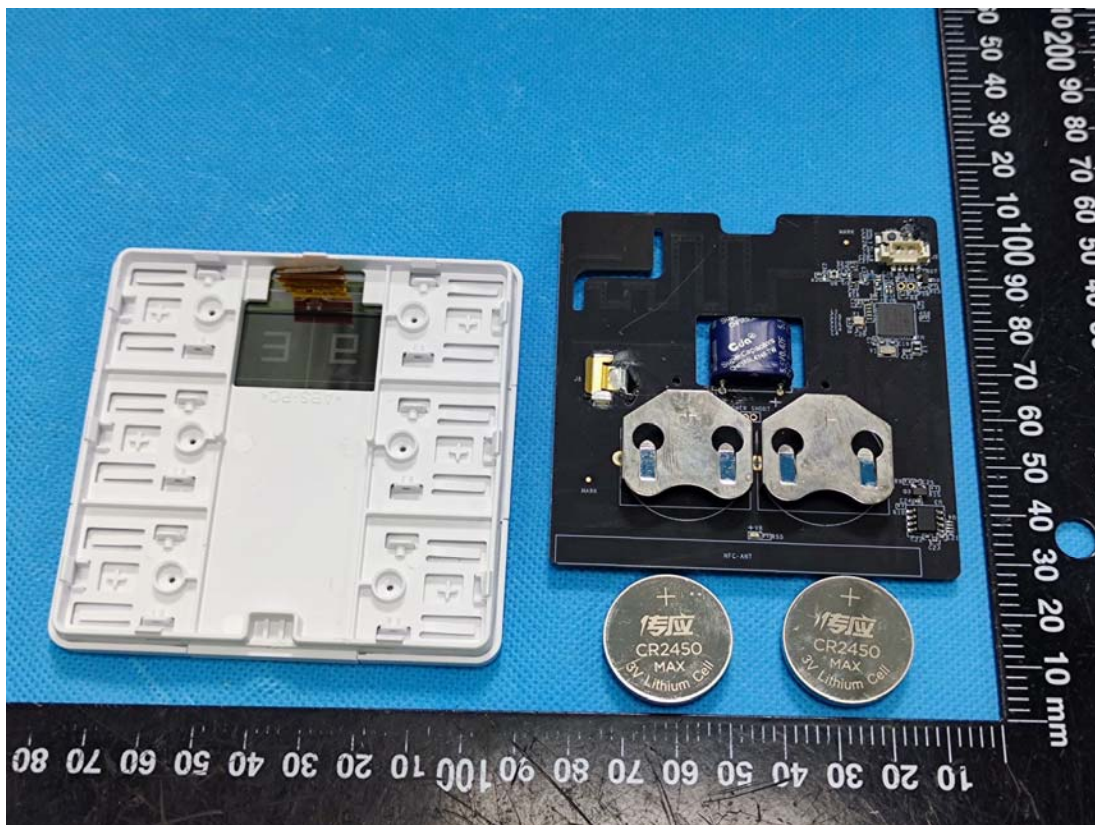
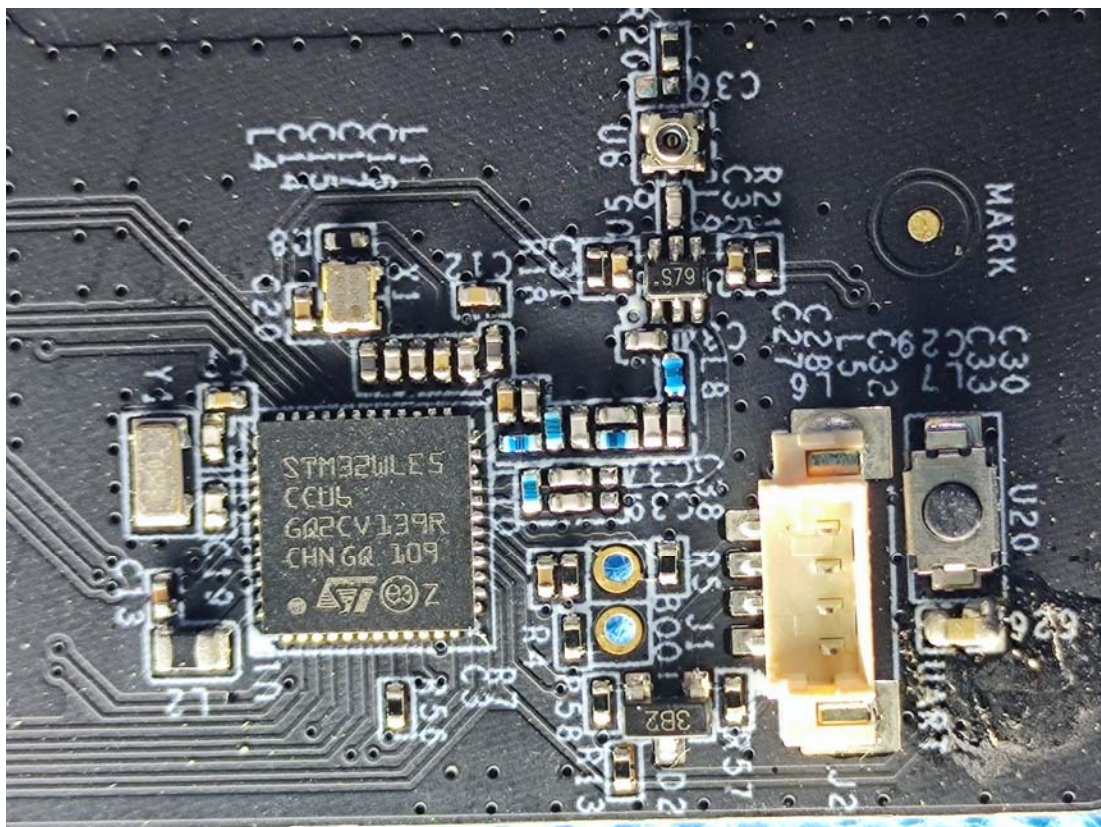
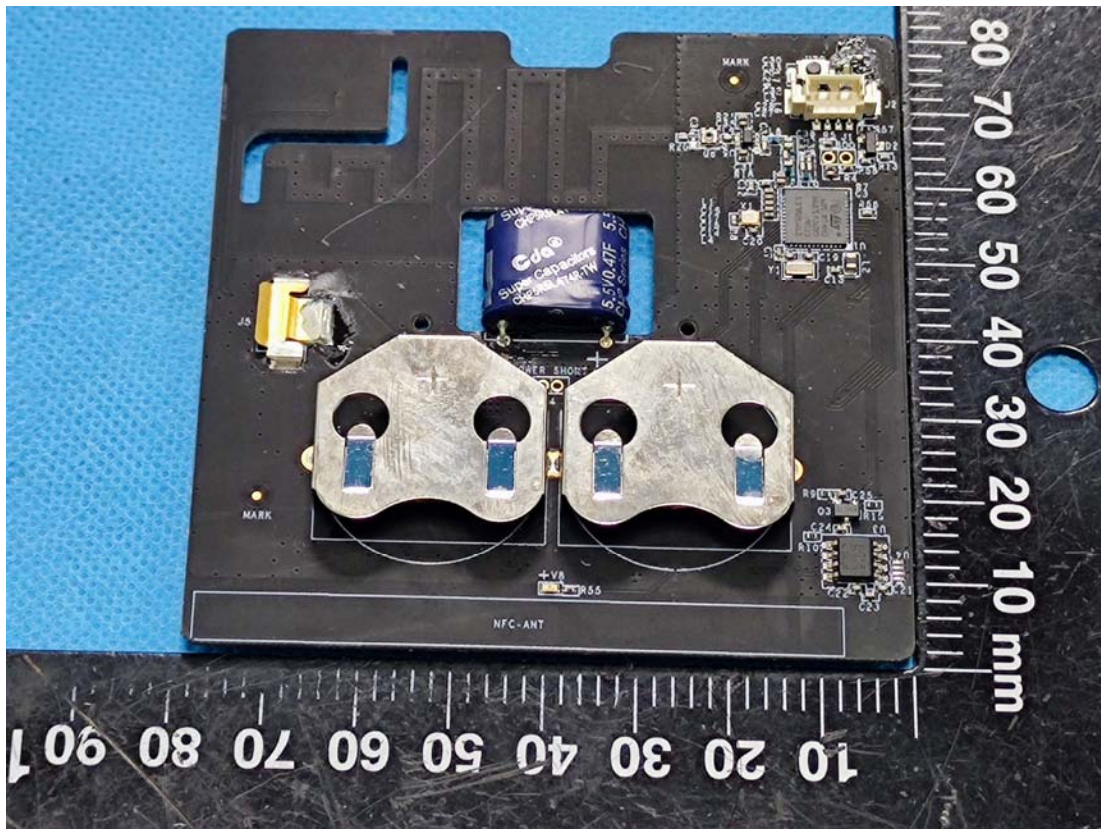


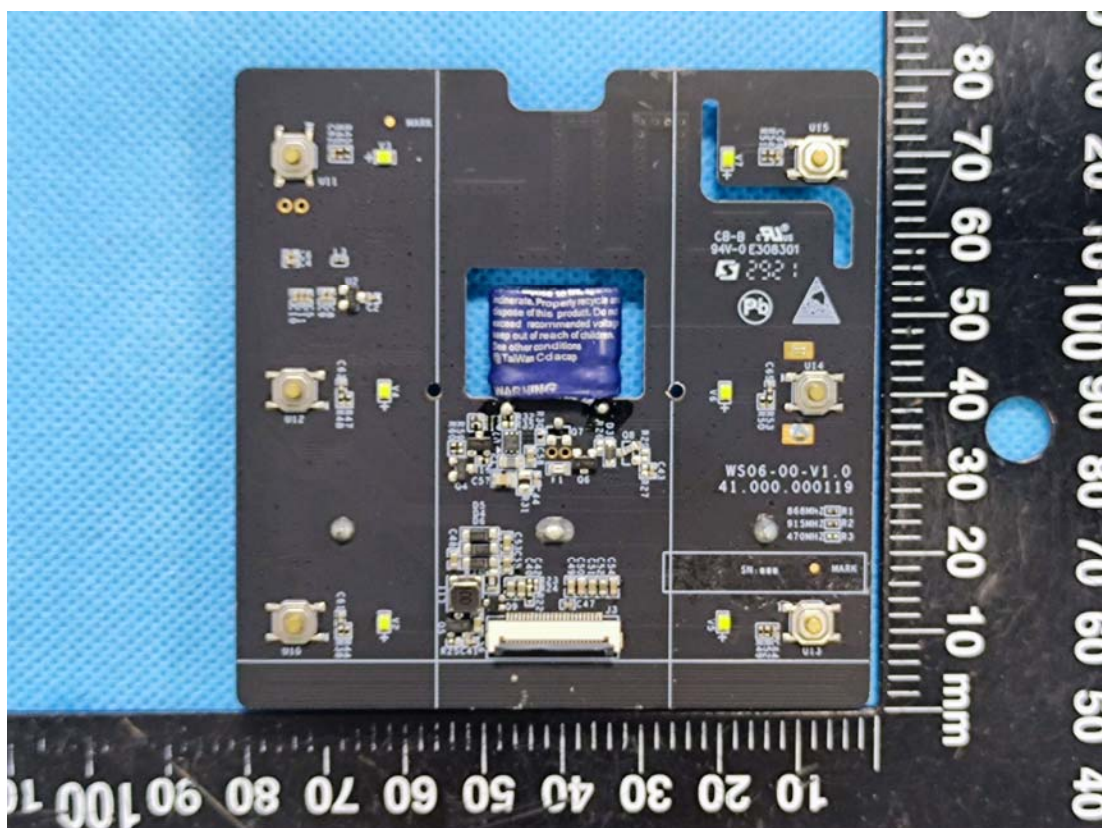
EXHIBIT C - EUT INTERNAL PHOTOGRAPHS

Model: WS156-915M
(Model: NE156-915M fully identical with this model)

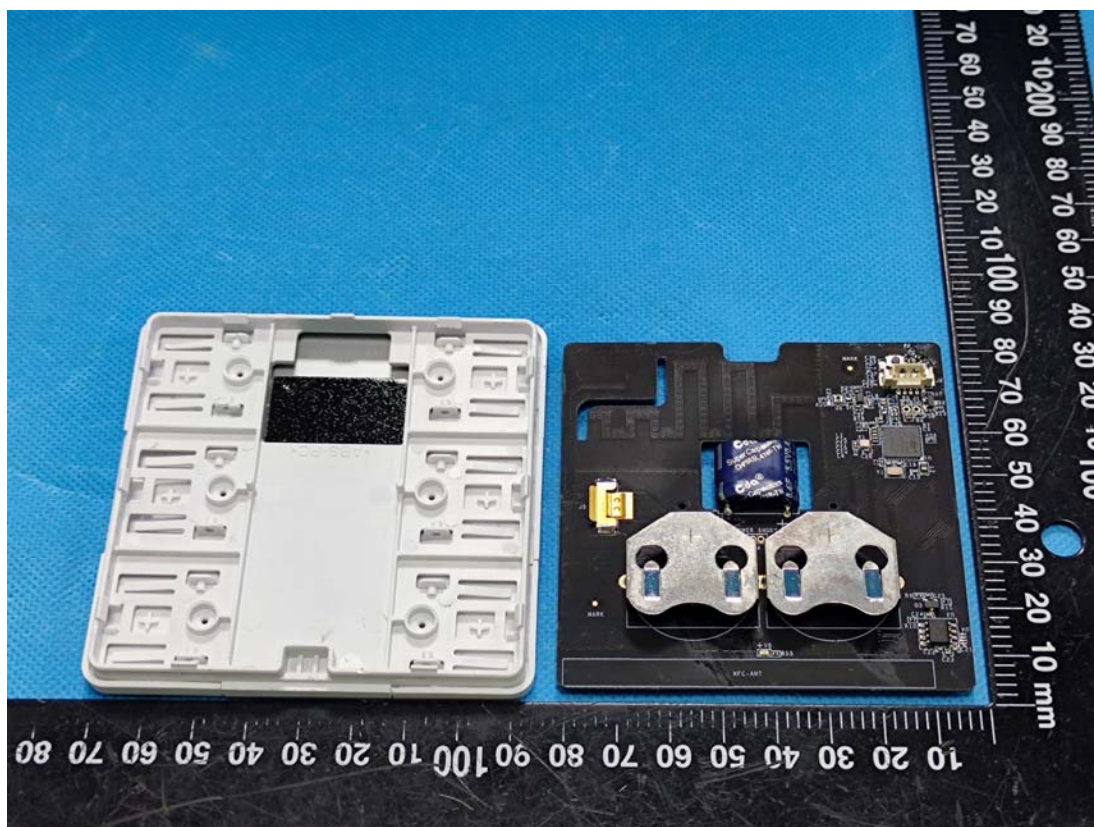
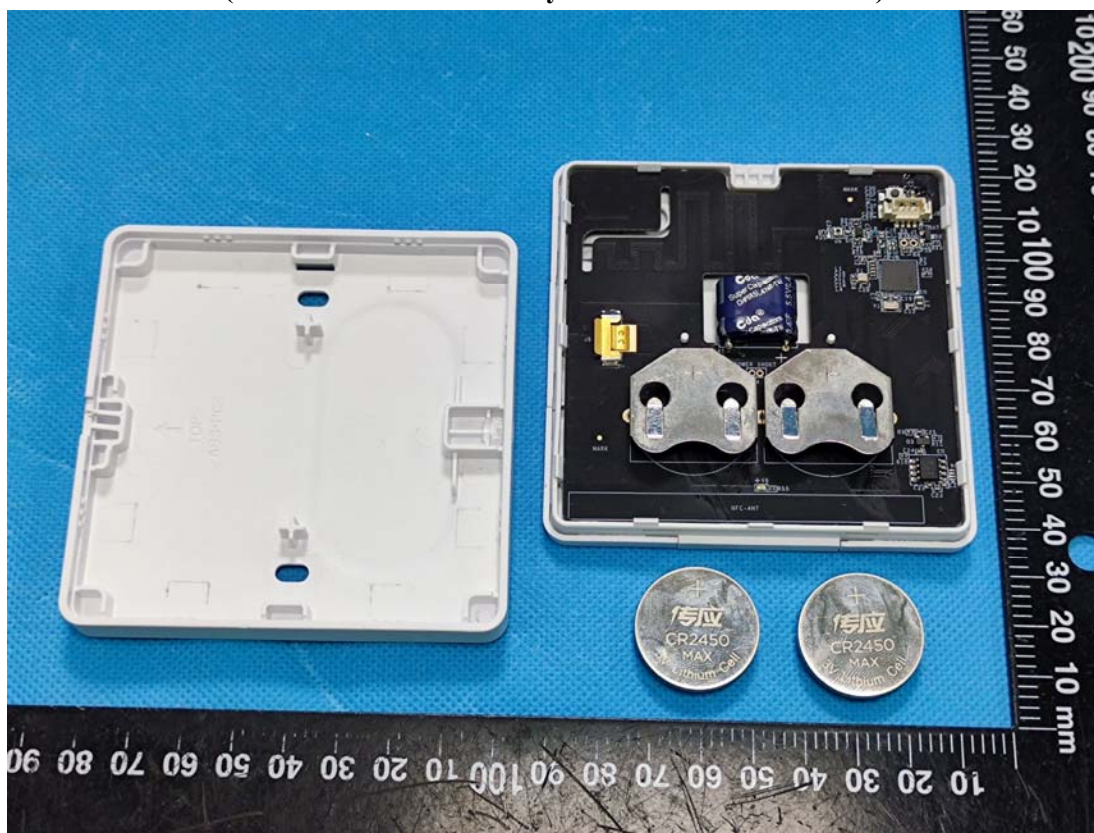


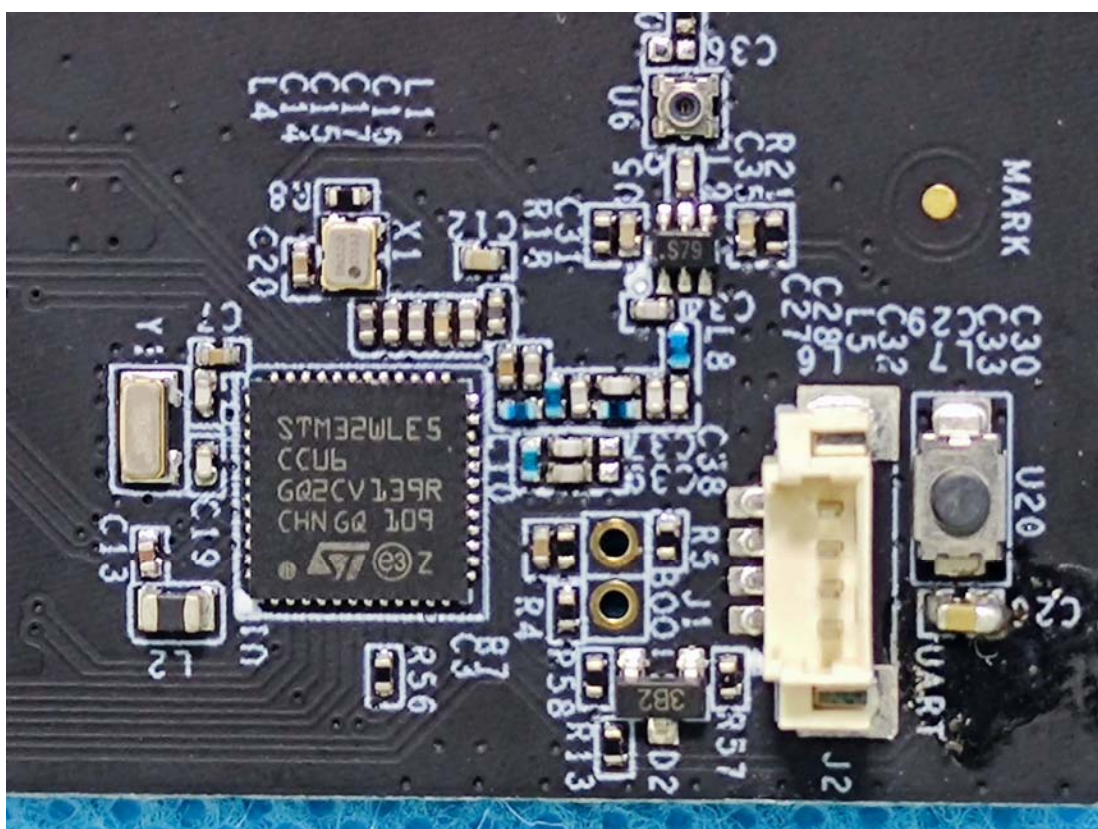
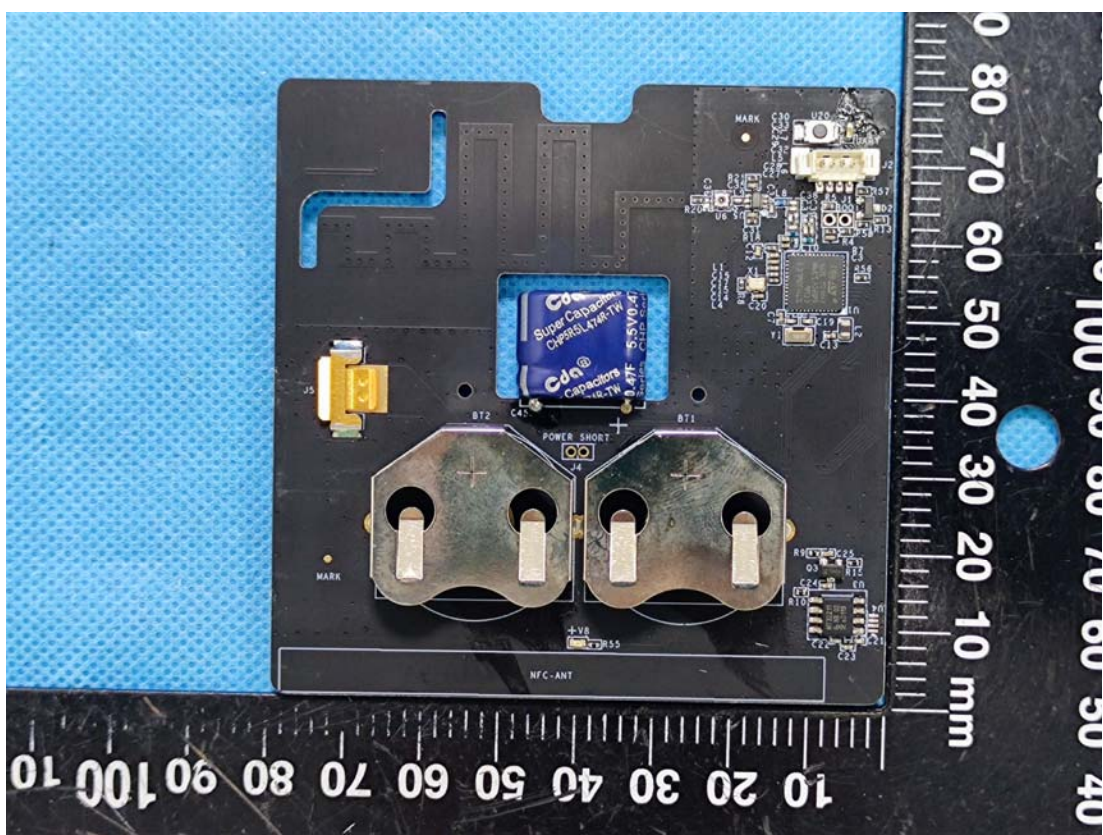


A close-up photograph of a circuit board assembly. The top portion of the image shows a blue, textured, woven fabric-like material. Below this, a black printed circuit board (PCB) is visible, featuring several vertical strips of silver-colored solder points. On the right side of the PCB, there are several electronic components, including a small integrated circuit (IC) labeled 'U6' and various resistors labeled 'R2C', 'R2D', 'R2E', and 'R2F'. A blue component, likely a capacitor or a small IC, is partially visible at the bottom left, with the text 'SUPER CHIPSELA' and '7F 5.5' printed on it. The overall image is somewhat blurry and has a low resolution.



Model: WS136-915M
(Model: NE136-915M fully identical with this model)





Antenna

