

Shenzhen MoreSense Technology Co., Ltd.

Address:#206 Building A1, #663 Bulong Road, Dafapu Community, Bantian Street, Longgang

District, 518129, Shenzhen

Antenna Type:Patch

Antenna model:5.8G Antenna

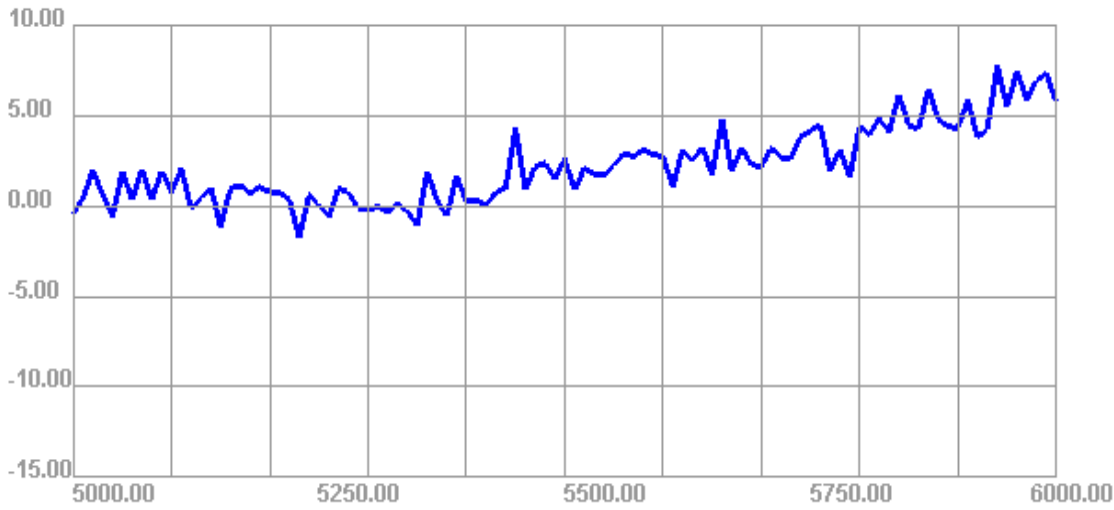
Statement:

Only radiated measurements are used to show compliance with FCC limits for fundamental and spurious emissions.

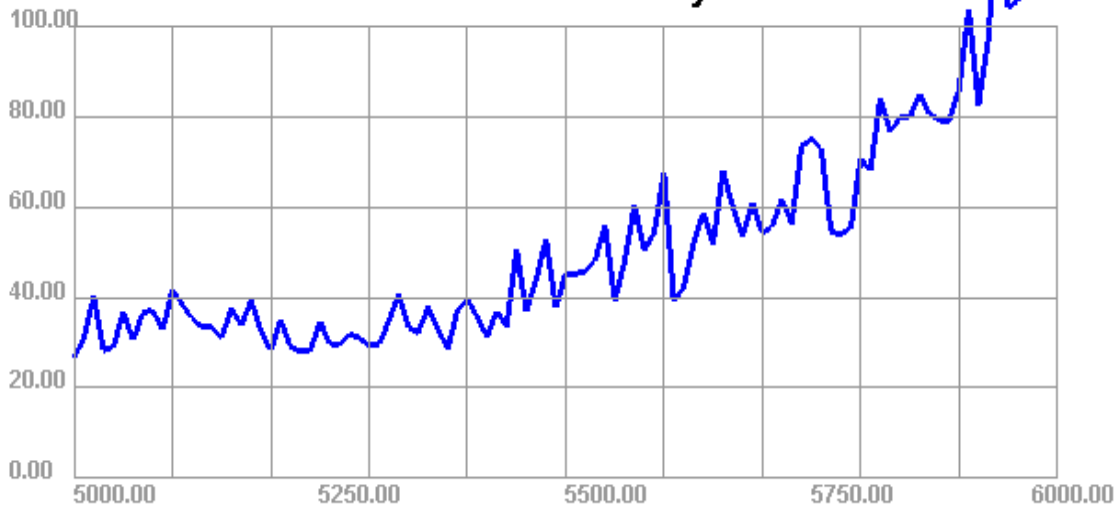
Passive Test For 5G												
Freq (MHz)	Effi (%)	Effi (dB)	Gain (dBi)	Gain (dBd)	UHS (%)	DHS (%)	Max (dB)	Min (dB)	Directivity (dBi)	Beamwidth (3dB)	AttH (dB)	AttV (dB)
5000	26.72	-5.73	-0.44	-2.59	13.857	12.865	-0.44	-18.35	5.29	0	56.03	55.81
5010	31.03	-5.08	0.44	-1.71	16.707	14.319	0.44	-14.51	5.53	0	57.03	57.21
5020	40.22	-3.96	1.98	-0.17	22.478	17.741	1.98	-15.87	5.94	0	57.37	56.93
5030	28.37	-5.47	0.63	-1.52	12.485	15.887	0.63	-17.01	6.1	60	55.75	55.61
5040	29.09	-5.36	-0.58	-2.73	16.548	12.543	-0.58	-24.21	4.78	0	55.8	55.65
5050	36.73	-4.35	1.92	-0.23	15.774	20.961	1.92	-19.83	6.27	0	56.66	56.18
5060	30.59	-5.14	0.34	-1.81	14.539	16.051	0.34	-18.42	5.48	0	55.37	55.06
5070	36.68	-4.36	2.02	-0.13	18.111	18.565	2.02	-17.48	6.38	60	56.17	55.95
5080	37.11	-4.31	0.36	-1.79	19.233	17.877	0.36	-18.61	4.66	0	56.85	56.36
5090	32.82	-4.84	1.92	-0.23	16.032	16.784	1.92	-14.26	6.76	30	56.38	56.13
5100	41.65	-3.8	0.79	-1.36	22.507	19.138	0.79	-17.57	4.59	0	56.63	56.4
5110	38.42	-4.15	2.07	-0.08	20.876	17.548	2.07	-15.32	6.22	30	56.29	55.87
5120	35.3	-4.52	-0.12	-2.27	16.06	19.239	-0.12	-15.43	4.4	0	55.02	54.81
5130	33.51	-4.75	0.46	-1.69	18.885	14.627	0.46	-14.22	5.21	30	56.06	55.9
5140	33.37	-4.77	1.06	-1.09	17.736	15.633	1.06	-14.27	5.83	90	56.17	55.77
5150	31.17	-5.06	-1.16	-3.31	15.956	15.214	-1.16	-16.29	3.9	0	55.79	55.73
5160	37.54	-4.26	0.95	-1.2	18.002	19.533	0.95	-17.16	5.21	0	55.63	55.6
5170	33.85	-4.7	1.15	-1	17.759	16.091	1.15	-17.76	5.85	90	56.29	56.03
5180	39.27	-4.06	0.72	-1.43	18.846	20.42	0.72	-15.69	4.78	0	55.08	55.29
5190	32.58	-4.87	1.04	-1.11	15.467	17.11	1.04	-15.07	5.92	30	55.45	55.32
5200	28.28	-5.49	0.78	-1.37	14.071	14.207	0.78	-18.3	6.26	60	55.59	55.3
5210	34.98	-4.56	0.77	-1.38	17.491	17.485	0.77	-14.05	5.33	60	55.91	56.22
5220	29.05	-5.37	0.34	-1.81	15.203	13.848	0.34	-16.16	5.71	90	55.37	55.48
5230	28.12	-5.51	-1.74	-3.89	13.923	14.194	-1.74	-16.78	3.77	60	55.49	55.52
5240	28.05	-5.52	0.59	-1.56	15.607	12.445	0.59	-23.12	6.11	30	55.1	55.26
5250	34.72	-4.59	0.04	-2.11	17.639	17.081	0.04	-13.75	4.64	0	56.21	56.05
5260	29.92	-5.24	-0.6	-2.75	15.62	14.302	-0.6	-11.56	4.64	0	55.7	55.67
5270	29.42	-5.31	0.98	-1.17	14.076	15.344	0.98	-22.63	6.29	30	56.09	56.38
5280	32.08	-4.94	0.74	-1.41	19.557	12.525	0.74	-17.7	5.68	0	55.16	55.29
5290	31.07	-5.08	-0.12	-2.27	19.193	11.873	-0.12	-16.08	4.96	30	54.95	55.22
5300	29.5	-5.3	-0.22	-2.37	15.435	14.063	-0.22	-18.82	5.08	30	54.74	55.04
5310	29.69	-5.27	-0.05	-2.2	13.982	15.705	-0.05	-17.64	5.22	60	55.05	54.98
5320	34.65	-4.6	-0.34	-2.49	18.663	15.99	-0.34	-29.23	4.27	30	55.13	55.28
5330	40.66	-3.91	0.11	-2.04	19.102	21.554	0.11	-15.01	4.02	0	56.75	57.1
5340	33.33	-4.77	-0.27	-2.42	17.492	15.839	-0.27	-16.57	4.5	30	55.75	55.76
5350	32.3	-4.91	-1.09	-3.24	15.186	17.116	-1.09	-13.53	3.82	0	55.89	56.26
5360	37.82	-4.22	1.91	-0.24	16.541	21.284	1.91	-15.26	6.13	120	56.01	56.22
5370	33.1	-4.8	0.36	-1.79	16.548	16.555	0.36	-14.23	5.16	120	55.36	55.21
5380	28.62	-5.43	-0.55	-2.7	15.171	13.445	-0.55	-16.7	4.89	0	55.33	55.54
5390	37.17	-4.3	1.65	-0.5	21.896	15.273	1.65	-17.18	5.95	30	56.55	56.62
5400	39.56	-4.03	0.28	-1.87	20.762	18.802	0.28	-12.73	4.3	90	56.11	55.95
5410	35.63	-4.48	0.3	-1.85	17.345	18.29	0.3	-14.77	4.78	0	56.08	56.28
5420	31.37	-5.04	0.06	-2.09	16.724	14.645	0.06	-13.24	5.1	60	57.1	56.84
5430	37.04	-4.31	0.76	-1.39	19.869	17.174	0.76	-13.3	5.07	0	55.69	55.53
5440	33.63	-4.73	0.99	-1.16	15.994	17.636	0.99	-20.3	5.73	0	56.05	55.85

5450	50.64	-2.96	4.28	2.13	28.121	22.514	4.28	-12.8	7.23	60	57.02	56.56
5460	36.85	-4.34	0.95	-1.2	19.367	17.478	0.95	-18.45	5.28	30	56.19	55.71
5470	43.91	-3.57	2.16	0.01	23.08	20.829	2.16	-19.43	5.73	0	56.53	56.19
5480	52.9	-2.77	2.37	0.22	25.562	27.343	2.37	-14.95	5.14	0	57.68	57.17
5490	37.64	-4.24	1.46	-0.69	19.707	17.937	1.46	-19.49	5.7	0	56.75	55.98
5500	45.39	-3.43	2.59	0.44	23.399	21.996	2.59	-13.42	6.02	30	57.45	56.9
5510	45.18	-3.45	0.89	-1.26	21.793	23.389	0.89	-21.76	4.34	0	57.99	57.29
5520	45.84	-3.39	2.09	-0.06	23.807	22.028	2.09	-14.76	5.48	90	56.87	56.1
5530	48.21	-3.17	1.74	-0.41	27.016	21.189	1.74	-12.61	4.91	0	57.47	56.6
5540	56.02	-2.52	1.71	-0.44	29.958	26.058	1.71	-17.31	4.23	240	58.26	57.22
5550	39.32	-4.05	2.27	0.12	20.098	19.219	2.27	-15.39	6.33	0	57.36	56.45
5560	48.04	-3.18	2.91	0.76	26.225	21.81	2.91	-15.91	6.1	0	57.86	56.99
5570	60.33	-2.19	2.73	0.58	32.99	27.339	2.73	-11.19	4.92	30	58.43	57.42
5580	50.51	-2.97	3.11	0.96	23.508	26.998	3.11	-22.63	6.07	60	57.79	57.04
5590	54.25	-2.66	2.85	0.7	28.287	25.966	2.85	-12.12	5.51	30	58.45	57.83
5600	67.65	-1.7	2.73	0.58	32.339	35.315	2.73	-17.34	4.43	30	58.32	57.39
5610	39.26	-4.06	1.08	-1.07	20.834	18.43	1.08	-14.81	5.14	0	57.53	56.85
5620	42.11	-3.76	3.13	0.98	24.267	17.841	3.13	-14.58	6.88	0	57.92	57.12
5630	51.94	-2.84	2.53	0.38	27.799	24.142	2.53	-13.41	5.37	0	57.8	56.97
5640	58.74	-2.31	3.28	1.13	33.76	24.977	3.28	-19.11	5.59	30	57.75	57.35
5650	51.82	-2.86	1.73	-0.42	29.214	22.603	1.73	-17.78	4.59	60	57.96	57.24
5660	68.03	-1.67	4.81	2.66	37.673	30.359	4.81	-16.9	6.48	90	58.89	58.08
5670	59.97	-2.22	1.93	-0.22	29.901	30.072	1.93	-15.17	4.15	210	57.95	57.39
5680	53.54	-2.71	3.23	1.08	27.454	26.088	3.23	-14.63	5.94	90	57.99	57.44
5690	60.85	-2.16	2.29	0.14	31.463	29.389	2.29	-11.52	4.45	60	57.35	56.74
5700	54.22	-2.66	2.16	0.01	25.178	29.043	2.16	-14.37	4.82	0	57.3	56.72
5710	55.74	-2.54	3.21	1.06	29.088	26.656	3.21	-10.44	5.75	60	57.43	56.88
5720	61.61	-2.1	2.69	0.54	35.843	25.772	2.69	-11.3	4.8	0	57.83	57.06
5730	56.39	-2.49	2.61	0.46	30.506	25.883	2.61	-11.09	5.1	0	57.91	57.57
5740	73.57	-1.33	3.82	1.67	41.715	31.856	3.82	-11.53	5.16	30	58.57	57.95
5750	74.96	-1.25	4.17	2.02	35.67	39.294	4.17	-9.39	5.42	60	57.89	57.24
5760	72.98	-1.37	4.48	2.33	35.101	37.876	4.48	-19.44	5.84	30	57.97	57.53
5770	54.48	-2.64	1.94	-0.21	30.072	24.41	1.94	-19.04	4.57	60	57.29	56.73
5780	54.01	-2.68	3.08	0.93	27.626	26.385	3.08	-11.93	5.76	30	57.46	56.85
5790	55.42	-2.56	1.63	-0.52	31.581	23.838	1.63	-12.81	4.19	30	57.76	57.37
5800	70.7	-1.51	4.39	2.24	34.01	36.69	4.39	-15.54	5.9	0	57.66	57.19
5810	68.16	-1.66	3.96	1.81	36.624	31.539	3.96	-14.06	5.63	120	57.55	57.06
5820	83.8	-0.77	4.82	2.67	45.77	38.028	4.82	-13.69	5.59	30	58.62	58.24
5830	76.77	-1.15	4.1	1.95	42.469	34.302	4.1	-14.12	5.25	120	57.81	57.4
5840	79.68	-0.99	6.13	3.98	41.783	37.894	6.13	-8.94	7.12	120	58.09	57.73
5850	79.67	-0.99	4.42	2.27	41.156	38.509	4.42	-11.28	5.41	0	58.32	57.91
5860	85.09	-0.7	4.29	2.14	44.659	40.429	4.29	-10.6	4.99	30	58.46	57.79
5870	80.6	-0.94	6.48	4.33	44.535	36.06	6.48	-8.68	7.42	30	58.36	57.93
5880	79.22	-1.01	4.78	2.63	44.876	34.344	4.78	-16.52	5.79	0	58.71	58.05
5890	78.83	-1.03	4.37	2.22	38.429	40.397	4.37	-13.2	5.41	0	58.14	57.44
5900	85.92	-0.66	4.34	2.19	45.657	40.259	4.34	-11.56	5	30	58.39	57.83
5910	103.72	0.16	5.83	3.68	56.702	47.015	5.83	-11.72	5.67	90	60.1	59.43
5920	82.6	-0.83	3.77	1.62	44.231	38.369	3.77	-11.05	4.6	30	58.86	58.05
5930	97.38	-0.12	4.28	2.13	52.961	44.415	4.28	-8.01	4.4	30	59.78	59.33
5940	127.66	1.06	7.73	5.58	59.475	68.184	7.73	-7.45	6.67	0	60.9	60.04
5950	104.11	0.17	5.51	3.36	56.809	47.302	5.51	-10.38	5.33	30	59.32	58.63
5960	105.56	0.23	7.47	5.32	62.111	43.447	7.47	-10.71	7.23	30	60.07	59.2
5970	116.8	0.67	5.86	3.71	64.41	52.389	5.86	-7.64	5.18	240	61.47	60.42
5980	118.29	0.73	6.96	4.81	66.041	52.246	6.96	-13.54	6.24	30	61.12	60.16
5990	158.48	2	7.3	5.15	93.254	65.225	7.3	-7.15	5.3	30	61.86	60.96
6000	127.52	1.06	5.76	3.61	62.064	65.451	5.76	-7.98	4.7	60	61.85	60.8

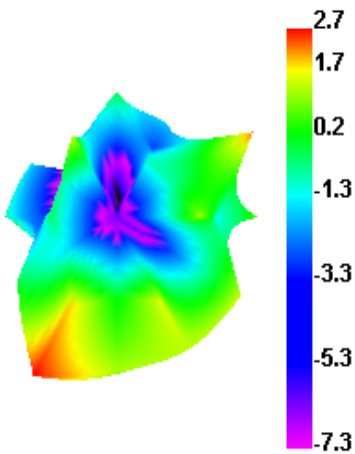
**5000.00MHz - 6000.00MHz Gain**



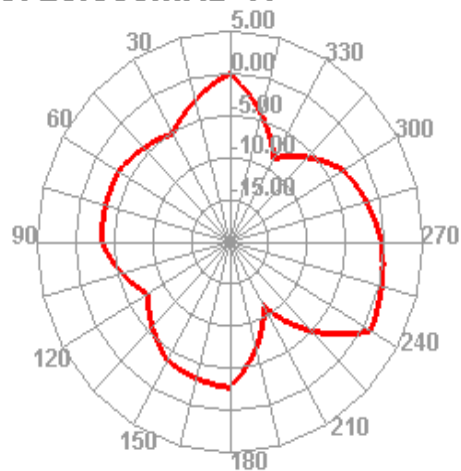
**5000.00MHz - 6000.00MHz Efficiency**



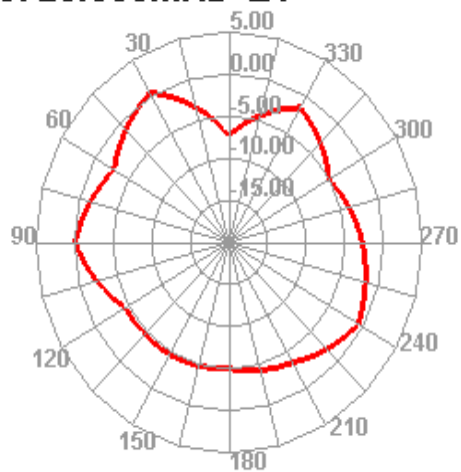
**5720.000MHz**



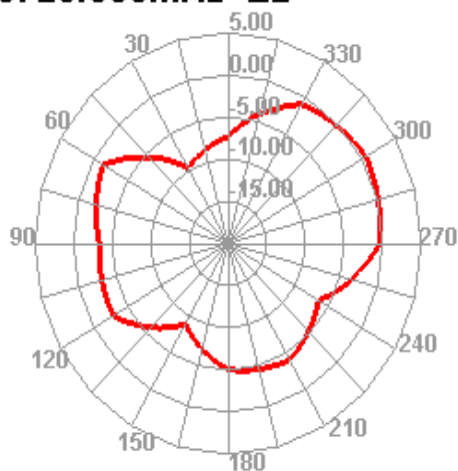
**5720.000MHz H**



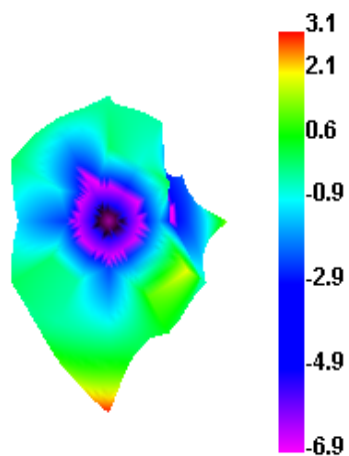
5720.000MHz E1



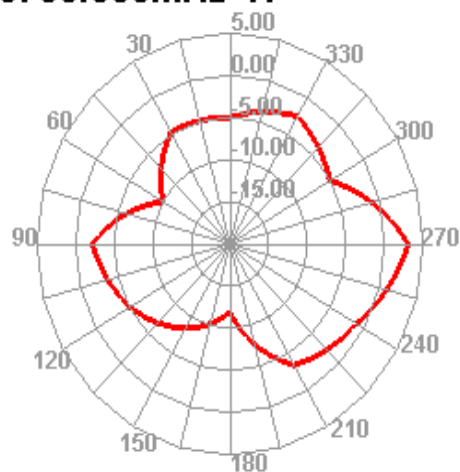
5720.000MHz E2



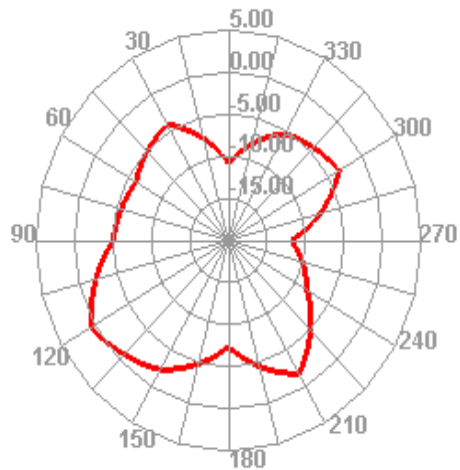
5780.000MHz



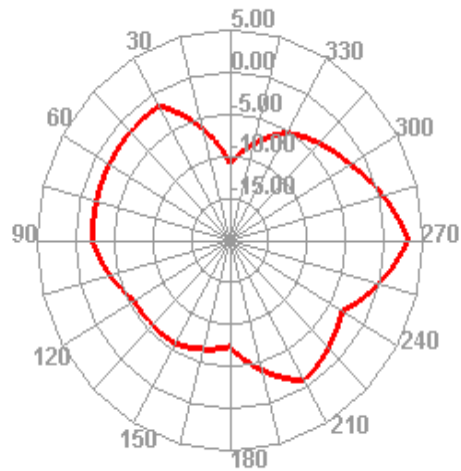
5780.000MHz H



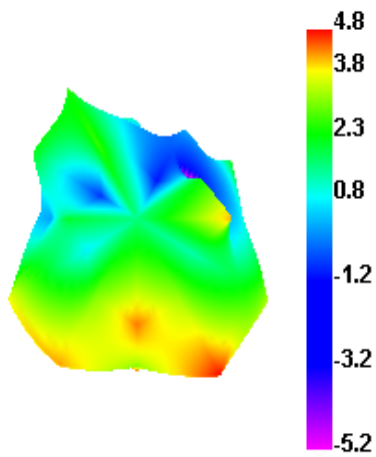
5780.000MHz E1



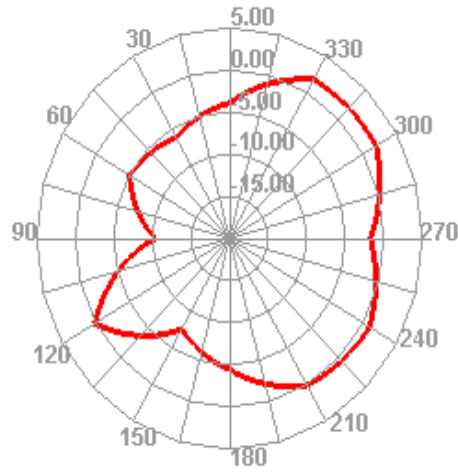
5780.000MHz E2



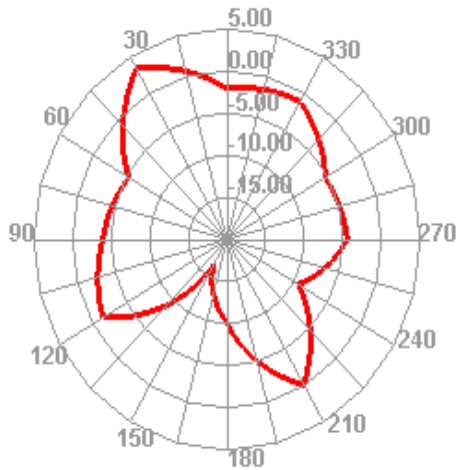
5880.000MHz



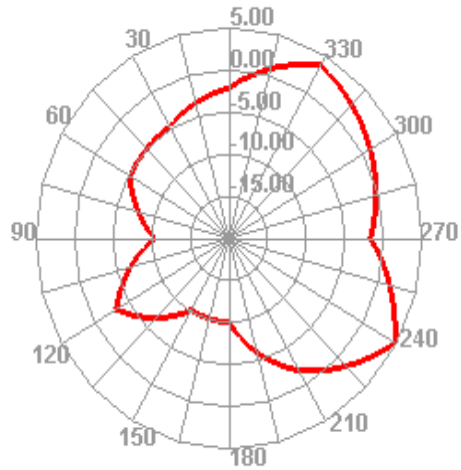
5880.000MHz H



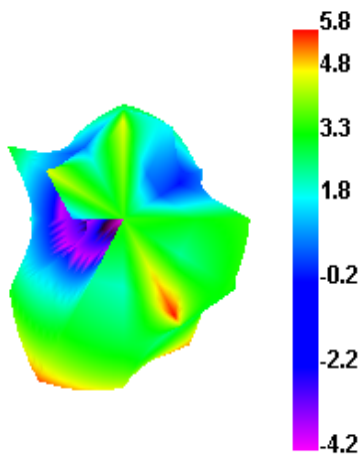
5880.000MHz E1



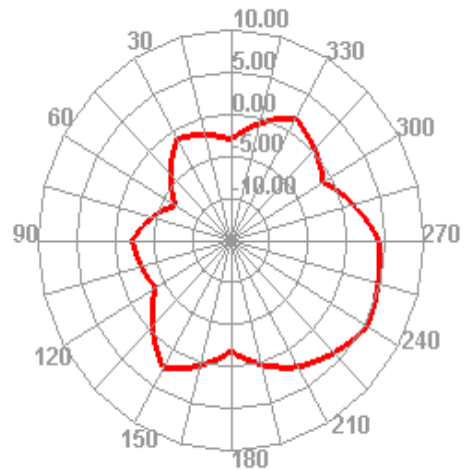
5880.000MHz E2



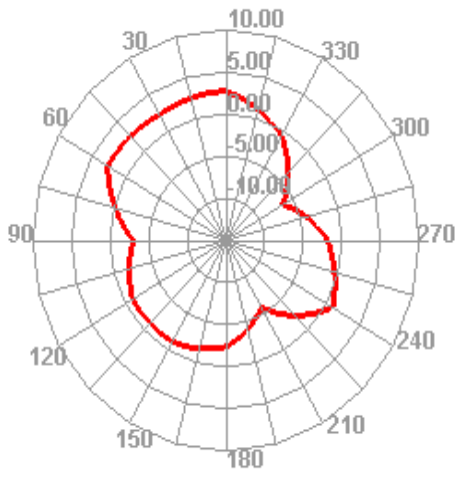
6000.000MHz



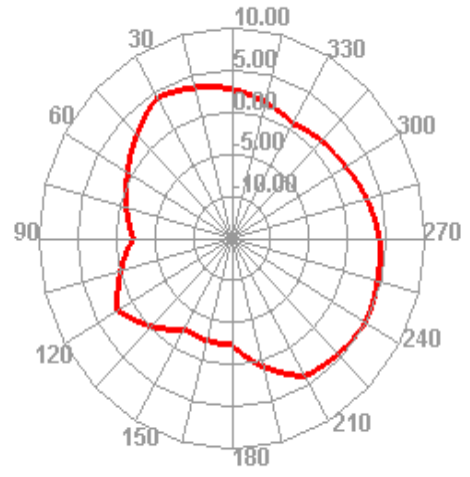
6000.000MHz H



6000.000MHz E1



6000.000MHz E2



Application Information	
04Version	5.244.350
TotalTime	3m 23s 86ms
AdditionalInfor	NULL

