

Milesight

Presence Sensor

DESK & SEAT OCCUPANCY SENSOR **LoRaWAN®**



VS340 & VS341

1. Packing List



1 x VS340 & VS341 Sensor



4 x PIR Covers



1 x 3M Tape



2 x Mounting Kits

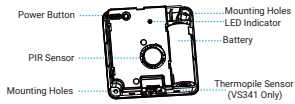
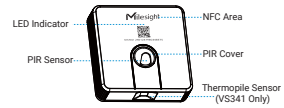


1 x Quick Start Guide



1 x Warranty Card

2. Hardware Introduction



3. Power Button and LED Patterns

Function	Action	LED Indicator
Power On/Off	Press and hold the power button for more than 3 seconds	Power On: Off→On
		Power Off: On→Off
Check On/Off Status	Quick press the power button	Light On: Device is on.
		Light Off: Device is off.
Reset to Factory Default	Press and hold the power button for more than 10 seconds	Blinks quickly
Occupancy Status	Vacant→Occupied	Blinks twice
	Occupied→Vacant	Blinks twice



4. Configuration Guide

1. Download "Milesight ToolBox"App on an NFC-supported smartphone.



Android



iOS

2. Open "Milesight ToolBox" App and attach the NFC area of the smartphone to device, click "NFC Read" to read/write the device until the App successfully shows a prompt. It's suggested to change the default password for security reasons. (Default password: 123456)



Milesight



Cloud App



Quick Start Guide

All software & files can be downloaded from
<http://www.milesight.com/documents/download/>

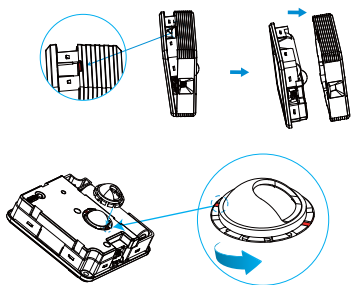
Better Inside, More in Sight

Milesight IoT Co., Ltd. | www.milesight.com
Building C09, Software Park Phase II, Xiamen 361024, Fujian, China

5. Installation

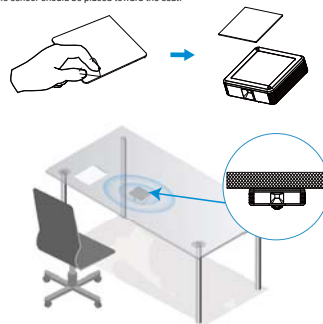
PIR Cover Installation

Take off the front cover of the device, then select the PIR cover as required and put it on the PIR sensor with groove alignment. The adjustable angle of every groove is 30°. The PIR cover can also be tailored according to requirements.



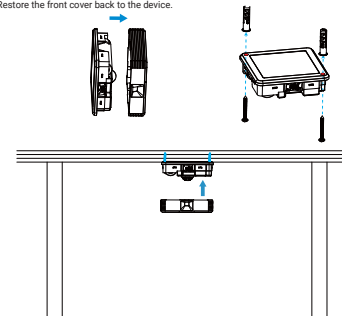
Fixed by 3M Tape

Attach 3M tape to the back of sensor, then tear the other side and place it under the working desk. Please adjust the installation direction according to the detection area and ensure that the thermopile sensor should be placed toward the seat.



Fixed by Mounting Kits

1. Take off the front cover of the device, then fix the wall plugs under the desk according to the device mounting holes, then fix the device to the wall plugs with screws. Please adjust the installation direction according to the detection area and ensure that the thermopile sensor should be placed toward the seat.
2. Restore the front cover back to the device.



6. FCC Statement

Any changes or modifications not expressly approved by the party responsible for compliance could void the user's authority to operate the equipment. This device complies with part 15 of the FCC Rules. Operation is subject to the following two conditions:

- (1) This device may not cause harmful interference, and,
- (2) This device must accept any interference received, including interference that may cause undesired operation.

Note: This equipment has been tested and found to comply with the limits for a Class B digital device, pursuant to part 15 of the FCC Rules. These limits are designed to provide reasonable protection against harmful interference in a residential installation. This equipment generates, uses and can radiate radio frequency energy and, if not installed and used in accordance with the instructions, may cause harmful interference to radio communications. However, there is no guarantee that interference will not occur in a particular installation. If this equipment does cause harmful interference to radio or television reception, which can be determined by turning the equipment off and on, the user is encouraged to try to correct the interference by one or more of the following measures:

- Reorient or relocate the receiving antenna.
- Increase the separation between the equipment and receiver.
- Connect the equipment into an outlet on a circuit different from that to which the receiver is connected.
- Consult the dealer or an experienced radio/TV technician for help.

FCC Radiation Exposure Statement:

This equipment complies with FCC radiation exposure limits set forth for an uncontrolled environment. This equipment should be installed and operated with minimum distance 20cm between the radiator & your body. This transmitter must not be co-located or operating in conjunction with any other antenna or transmitter.