

Milesight

QUICK START GUIDE

AT101

Asset Tracker
FEATURING LoRaWAN®



1. Packing List



1 × AT101 Device



2 × Mounting Kits



1 × 3M Tape



1 × Quick Start Guide



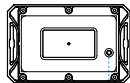
1 × Warranty Card

2. Hardware Introduction



NFC Area

Mounting Holes



Tamper Button

3. Power Button Patterns

AT101 tracker equips with power button inside the device, please remove the cover for emergency switch on/off. Usually users can use NFC to complete all steps.

Function	Action	LED Indicator
Power On	Press and hold the power button for more than 3 seconds.	Off → On
Power Off	Press and hold the power button for more than 3 seconds.	On → Off
Reset to Factory Default	Press and hold the power button for more than 10 seconds.	Blinks quickly
Check On/Off Status	Quickly press the power button.	Light On: Device is On.
		Light Off: Device is Off.

Milesight



Quick Start Guide



Cloud App

Speaker icon: All software & files can be downloaded from
<https://www.milesight-iot.com/documents-download/>

Better Inside, More in Sight

Milesight IoT Co., Ltd. | www.milesight-iot.com

Building C09, Software Park Phase III, Xiamen 361024, Fujian, China

4. Configuration Guide

1. Download "Milesight ToolBox" App on a Bluetooth-supported smartphone.

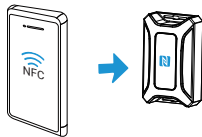


Android



iOS

2. Enable the Bluetooth function on your smart phone before opening ToolBox App. Click "Bluetooth Connect" and enter the Bluetooth password to read/write the device until App shows a successful prompt. (The default Bluetooth password: 123456).



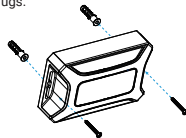
Note:

1. NFC password is the same as Bluetooth password.
2. If the Bluetooth password is entered over 1min, please re-enter the password.
3. The waiting interval will be increased gradually after the fifth time if entering the incorrect password continuously, the maximum interval is 15min.
4. It will disconnect Bluetooth automatically and require re-enter password if there is no data interaction after establishing the Bluetooth connection.
5. It's not supported to connect one sensor to multiple phones via Bluetooth at the same time; the connection on phone A will be disconnected after phone B is connected to the sensor via Bluetooth.

5. Installation

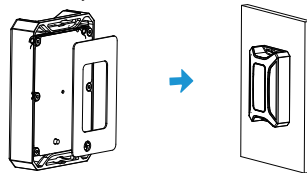
Fixed by Mounting Kits

Install the device to target places by using two M4 mounting screws and wall plugs.



Fixed by 3M Tape

Attach the 3M Tape to the back of AT101, tear another part and attach it to the measured object.



6. FCC Statement

Any Changes or modifications not expressly approved by the party responsible for compliance could void the user's authority to operate the equipment.
This device complies with part 15 of the FCC Rules. Operation is subject to the following two conditions:

- (1) This device may not cause harmful interference, and.
- (2) This device must accept any interference received, including interference that may cause undesired operation.

Note: This equipment has been tested and found to comply with the limits for a Class B digital device, pursuant to part 15 of the FCC Rules. These limits are designed to provide reasonable protection against harmful interference in a residential installation. This equipment generates, uses and can radiate radio frequency energy and, if not installed and used in accordance with the instructions, may cause harmful interference to radio communications.

However, there is no guarantee that interference will not occur in a particular installation. If this equipment does cause harmful interference to radio or television reception, which can be determined by turning the equipment off and on, the user is encouraged to try to correct the interference by one or more of the following measures:

- Reorient or relocate the receiving antenna.
- Increase the separation between the equipment and receiver.
- Connect the equipment into an outlet on a circuit different from that to which the receiver is connected.
- Consult the dealer or an experienced radio/TV technician for help.

FCC Radiation Exposure Statement:

This equipment complies with FCC radiation exposure limits set forth for an uncontrolled environment. This equipment should be installed and operated with minimum distance 20cm between the radiator & your body. This transmitter must not be co-located or operating in conjunction with any other antenna or transmitter.



BE	BG	CZ	DK	DE	EE	IE	EL
ES	FR	HR	IT	CY	LV	LT	LU
HU	MT	NL	AT	PL	PT	RO	SI
SK	FI	SE	NO	IS	LI	CH	TR