

**Milesight**

**Milesight**

# QUICK START GUIDE

AM300 Series



Quick Start Guide



Cloud App



All software & files can be downloaded from  
<https://www.milesight-iot.com/documents-download/>

## Better Inside, More in Sight

Milesight IoT Co., Ltd. | [www.milesight-iot.com](http://www.milesight-iot.com)

INDOOR AMBIENCE MONITORING SENSOR  
FEATURING **LoRaWAN®**



---

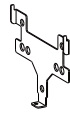
## Table of Contents

1. Packing List.....	2
2. Hardware Introduction.....	3
3. Button and LED Patterns.....	4
4. Emoticon Descriptions.....	5
5. Power Supply.....	6
6. Configuration Guide.....	8
7. Installation.....	10

## 1. Packing List



1 x AM300 Series Sensor



1 x Mounting Bracket



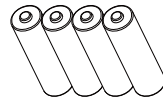
1 x 3M Double-Sided Tape



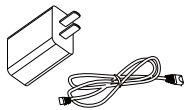
3 x Wall Mounting Kits



1 x Fixing Screw



4 x ER14505Li-SOC12 Batteries (AM307 & AM308)



1 x Type-C Cable & Power Adapter (AM319)

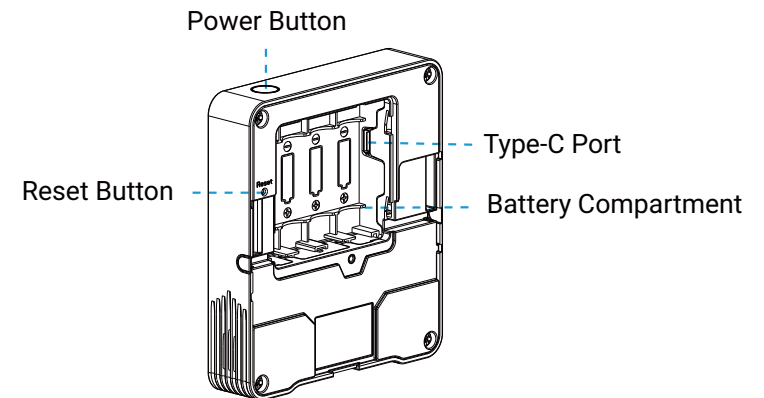
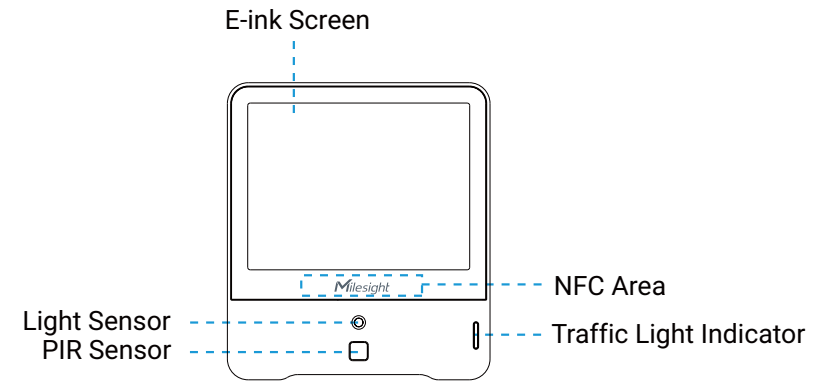


1 x Quick Start Guide



1 x Warranty Card

## 2. Hardware Introduction






### 3. Button & Traffic Light Indication

Function	Action	LED (Enabled)
Power ON/OFF	Press and hold the power button for more than 3 seconds.	Power On: Off → On
		Power Off: On → Off
Switch Display Mode	Quick press the power button once.	Blinks Once
Reset to Factory Default	Press and hold the reset button for more than 10 seconds.	Quickly Blinks
Threshold Alarm	When one of the concentrations of air pollutants of CO <sub>2</sub> ,TVOC, PM2.5, PM10 or HCHO/O <sub>3</sub> exceeds the threshold.	Polluted: Blinks/Always On (Configurable)
		Bad: Blinks/Always On (Configurable)

#### Note:

- If buzzer is enabled, it will response when one of concentrations of air pollutants exceeds the Bad threshold.
- AM319 supports Traffic Light as Blinking or Always On to indicate Polluted or Bad indoor ambience, while AM307 and AM308 only supports Blinking mode.

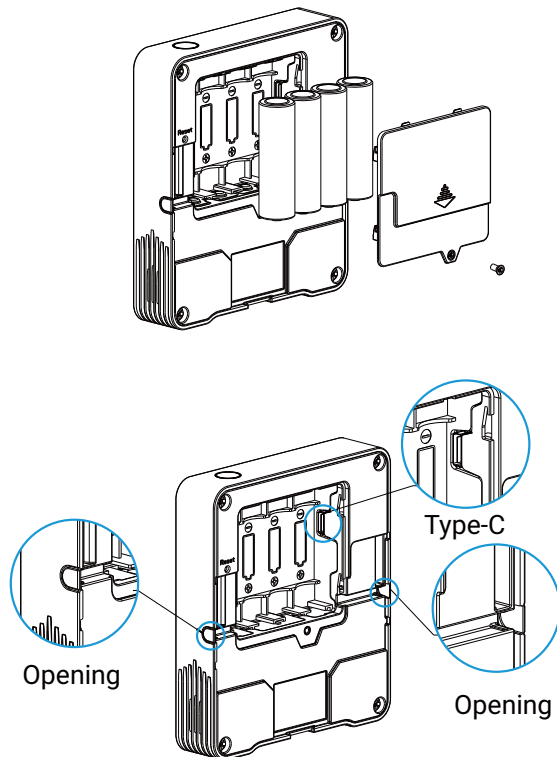
### 4. Emoticon Descriptions

Emoticon	Description
	You are having a healthy environment!
	When one of the concentrations of air pollutants of CO <sub>2</sub> , TVOC, PM2.5, PM10 or HCHO/O <sub>3</sub> exceeds the Polluted threshold.
	When one of the concentrations of air pollutants of CO <sub>2</sub> ,TVOC, PM2.5, PM10 or HCHO/O <sub>3</sub> exceeds the Bad threshold.

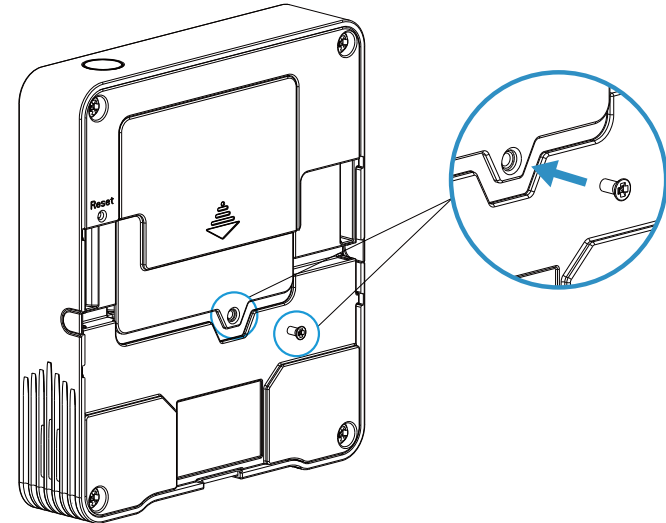
## 5. Power Supply

**Step 1:** Release the screw at the back of device and remove the rear cover.

**Step 2:** Install the batteries or type-C cable to the device. If the device is powered via type-C port, then left or right side should be made an opening to pass through the type-C cable.



**Step 3:** Fix the cover back to device with the screw.



**Note:**

- AM307 and AM308 can be powered by ER14505 Li-SOCI2 batteries, AM319 only supports type-C power supply.
- Type-C port can't be used to charge battery.
- The battery should be removed from the device if not to be used for an extended period. Otherwise, the battery might leak and damage the device. Never leave a discharged battery in the battery compartment.

## 6. Configuration Guide

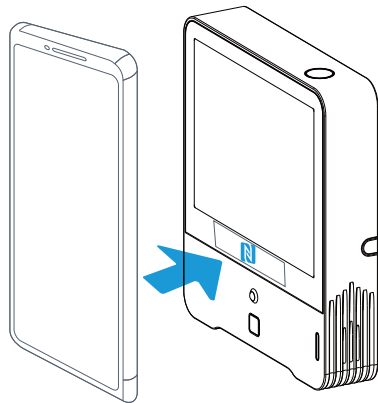
### Method 1: Configured by NFC

#### Preparation:

- Smartphone (NFC supported)
- Milesight ToolBox App: App can be downloaded on Google Play or App Store.

#### Steps:

Open "Milesight ToolBox" App and attach the smartphone with NFC area to read/write the device until App shows a successful prompt. If a smartphone is used for configuration for the first time, it's necessary to enter the password. (Default password: 123456)



Besides, it can be configured by dedicated NFC reader provided by Milesight IoT.

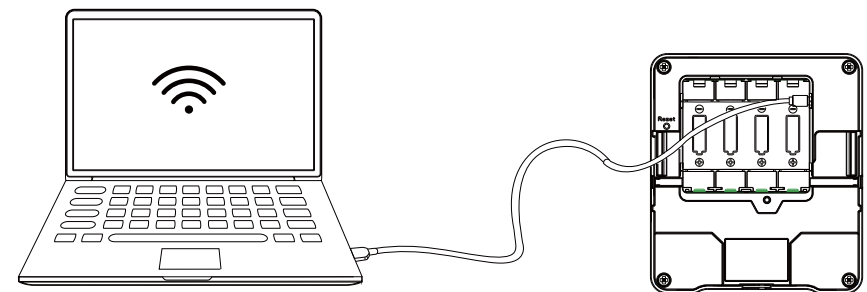
### Method 2: Configured by USB

#### Preparation:

- Type-C USB cable
- PC (Windows 10 is recommended)
- ToolBox Software: it can be downloaded on Milesight IoT website.

#### Steps:

Connect the device to computer via type-C port and open the ToolBox, select serial port as USB port and type as "General", then type the password to log in ToolBox and configure the device. (Default login password: 123456)



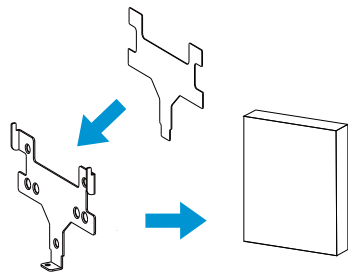
## 7. Installation

**Step 1:** Fix the mounting bracket via one of the following methods:

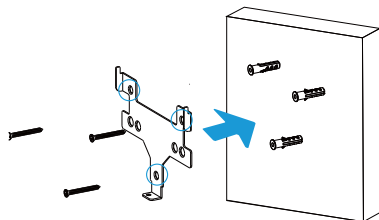
**Fixed by 3M Tape:** Paste 3M double-sided tape to the back of mounting bracket, then tear the other side and place the bracket on a flat surface.

**Wall Mounting:** Fix the wall plugs into the wall, then fix the mounting bracket to the wall plugs with screws.

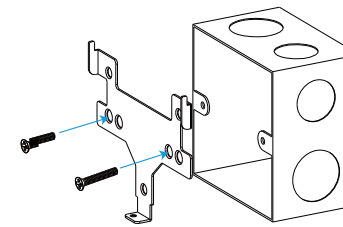
**86Box Mounting:** Fix the bracket to the 86box with 2 screws.



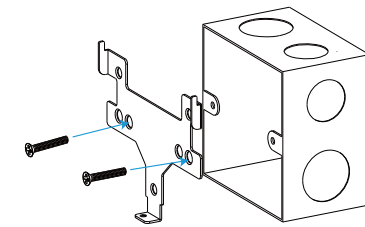
Fixed by 3M Tape



Wall Mounting



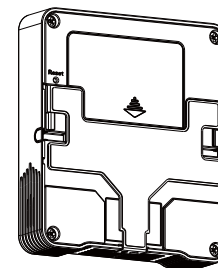
Screw Mode 1



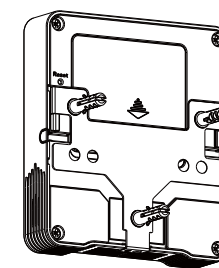
Screw Mode 2

### 86Box Mounting

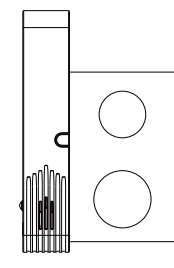
**Step 2:** Put the device on the mounting bracket, then fix the bottom of the device to the bracket with a fixing screw.



Fixed by 3M Tape



Wall Mounting



86Box Mounting

## 7. FCC Statement

Any Changes or modifications not expressly approved by the party responsible for compliance could void the user's authority to operate the equipment. This device complies with part 15 of the FCC Rules. Operation is subject to the following two conditions:

- (1) This device may not cause harmful interference, and
- (2) This device must accept any interference received, including interference that may cause undesired operation.

**Note:** This equipment has been tested and found to comply with the limits for a Class B digital device, pursuant to part 15 of the FCC Rules. These limits are designed to provide reasonable protection against harmful interference in a residential installation. This equipment generates, uses and can radiate radio frequency energy and, if not installed and used in accordance with the instructions, may cause harmful interference to radio communications. However, there is no guarantee that interference will not occur in a particular installation. If this equipment does cause harmful interference to radio or television reception, which can be determined by turning the equipment off and on, the user is encouraged to try to correct the interference by one or more of the following measures:

- Reorient or relocate the receiving antenna.
- Increase the separation between the equipment and receiver.
- Connect the equipment into an outlet on a circuit different from that to which the receiver is connected.
- Consult the dealer or an experienced radio/TV technician for help.

### **FCC Radiation Exposure Statement:**

This equipment complies with FCC radiation exposure limits set forth for an uncontrolled environment. This equipment should be installed and operated with minimum distance 20cm between the radiator& your body. This transmitter must not be co-located or operating in conjunction with any other antenna or transmitter.