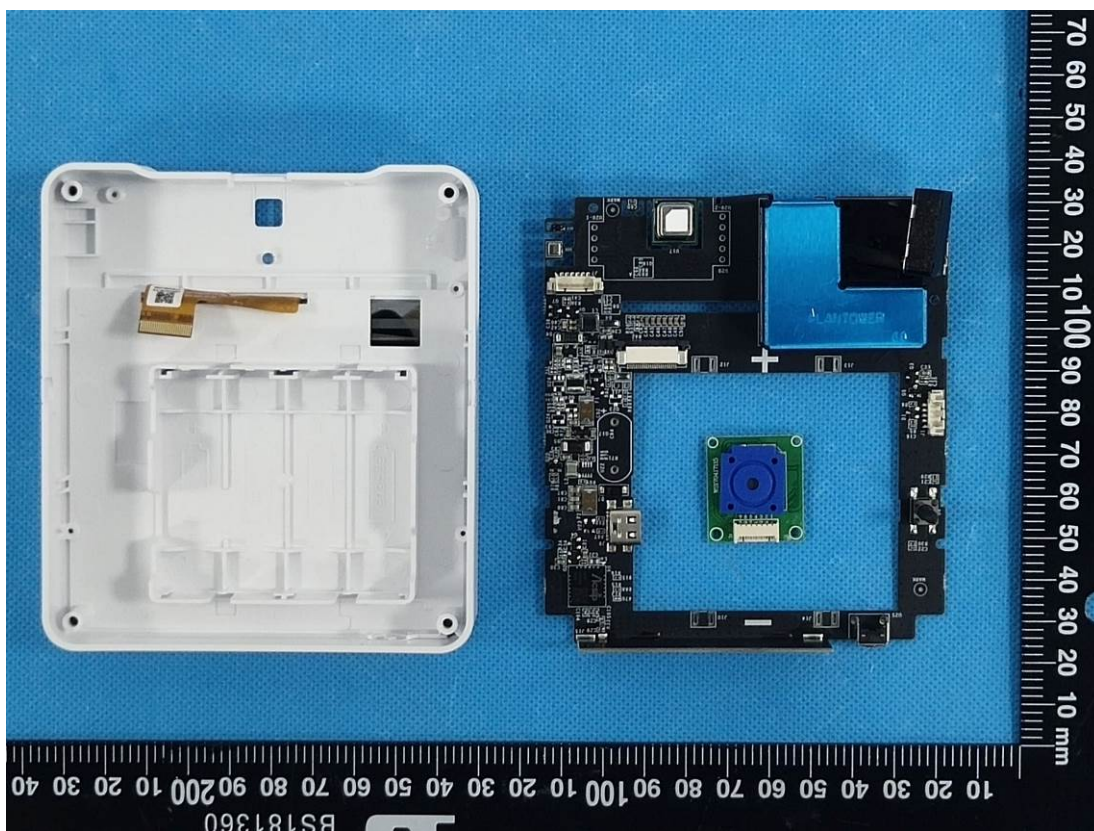
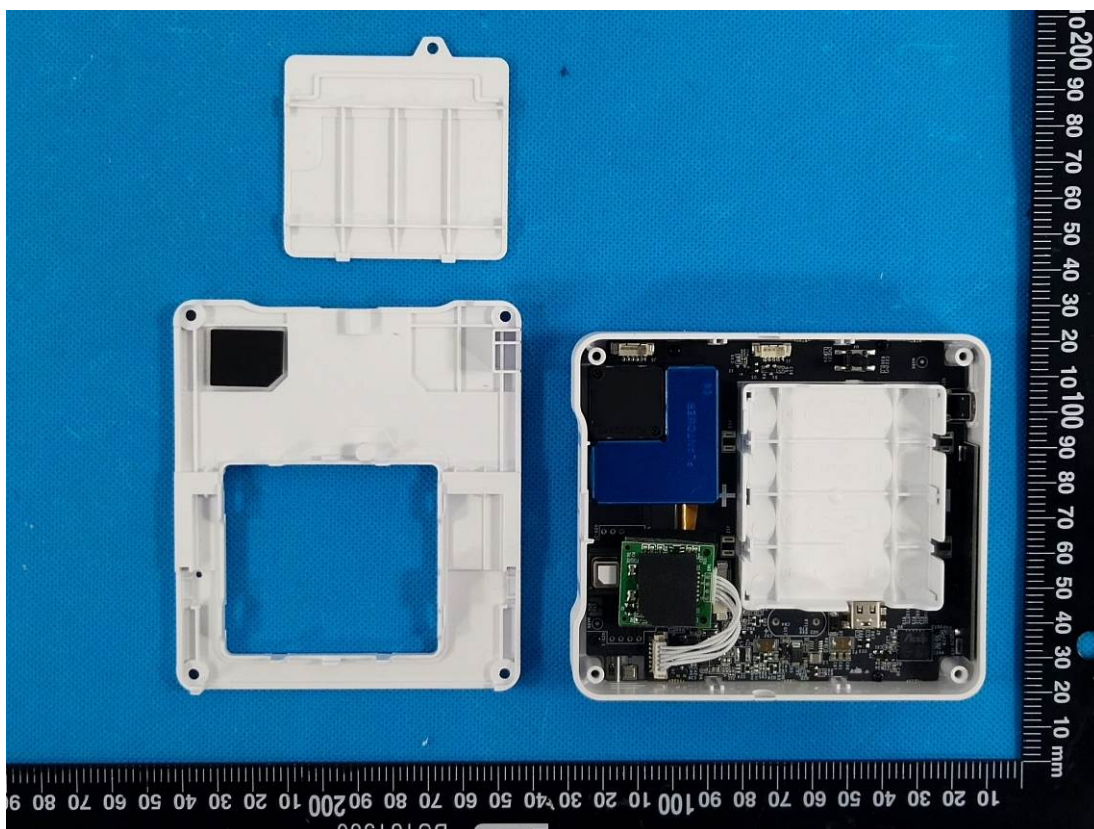
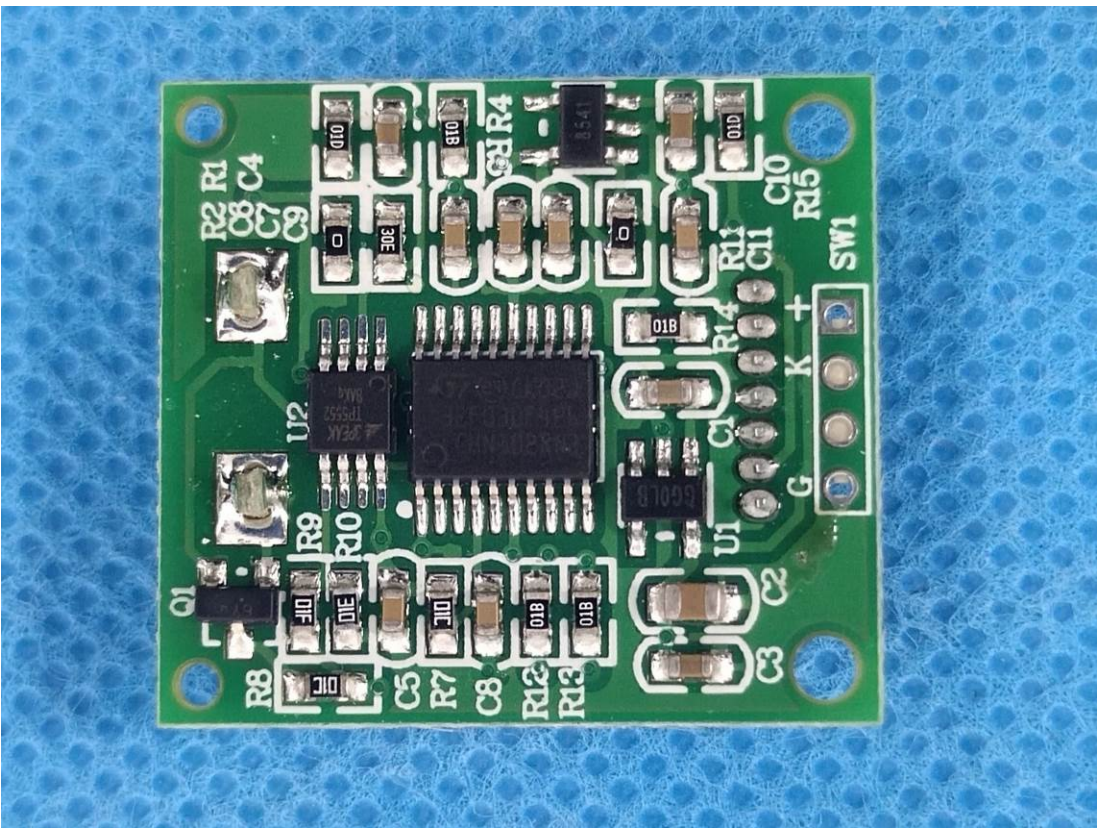
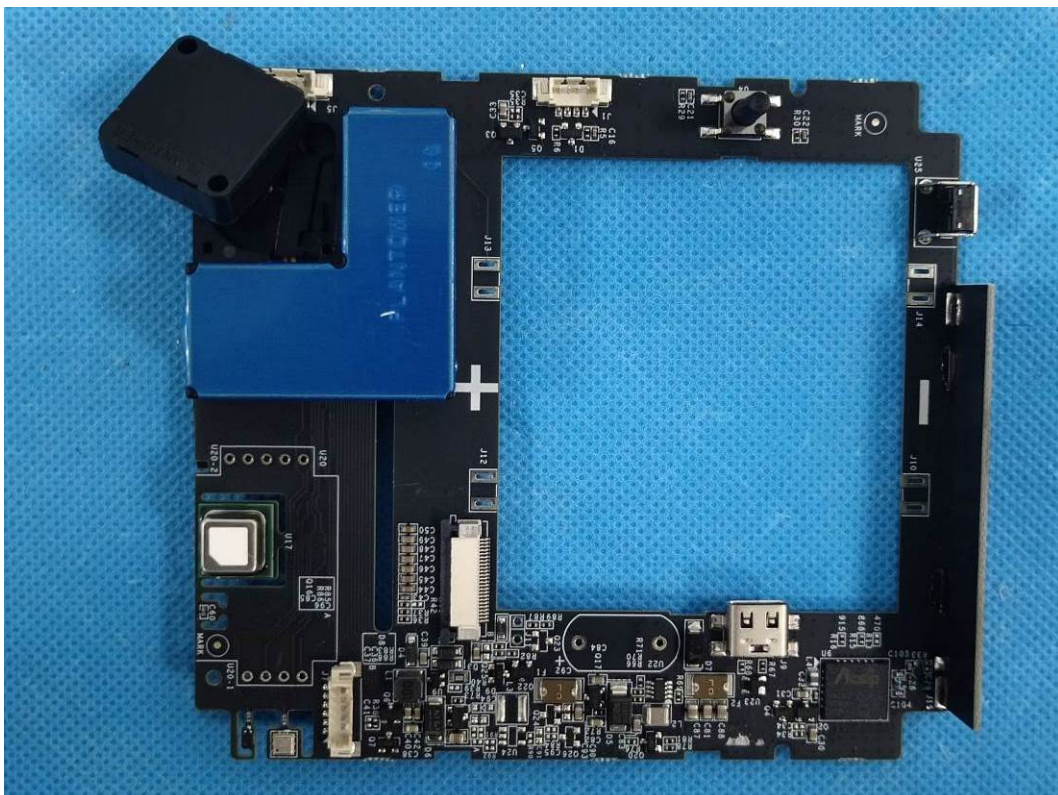
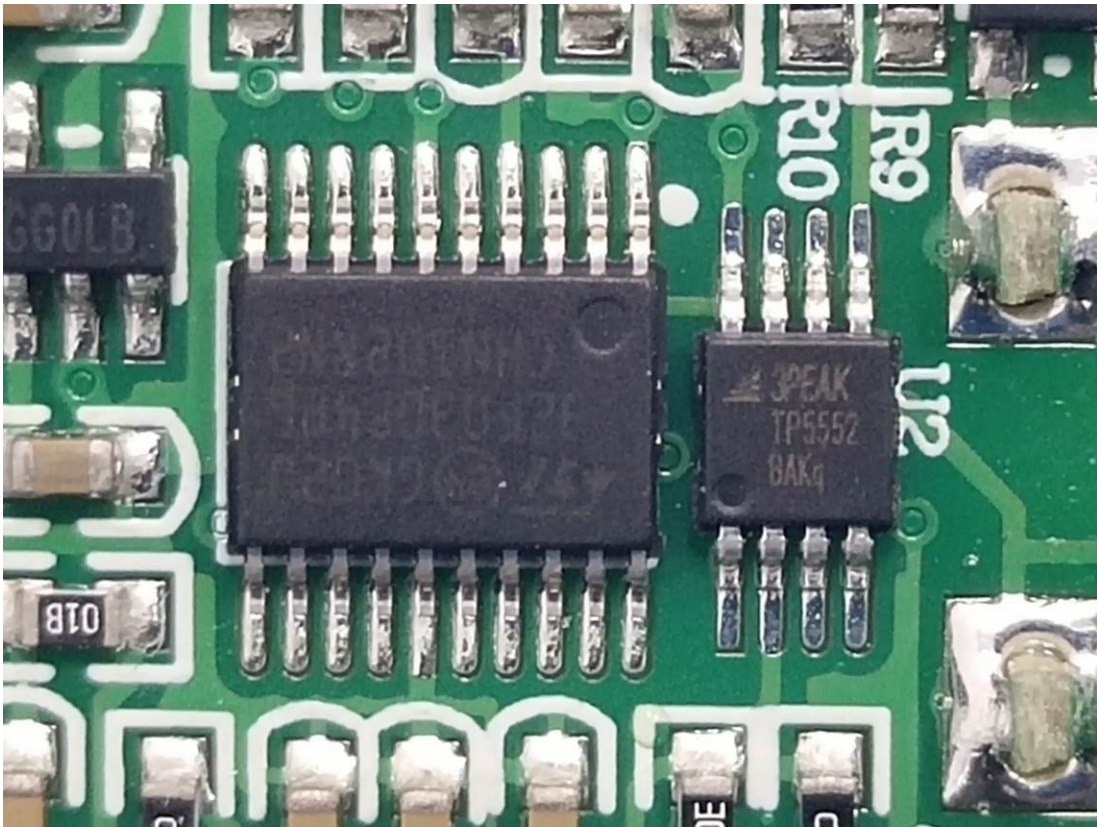


EXHIBIT C - EUT INTERNAL PHOTOGRAPHS
AM319-915M O3

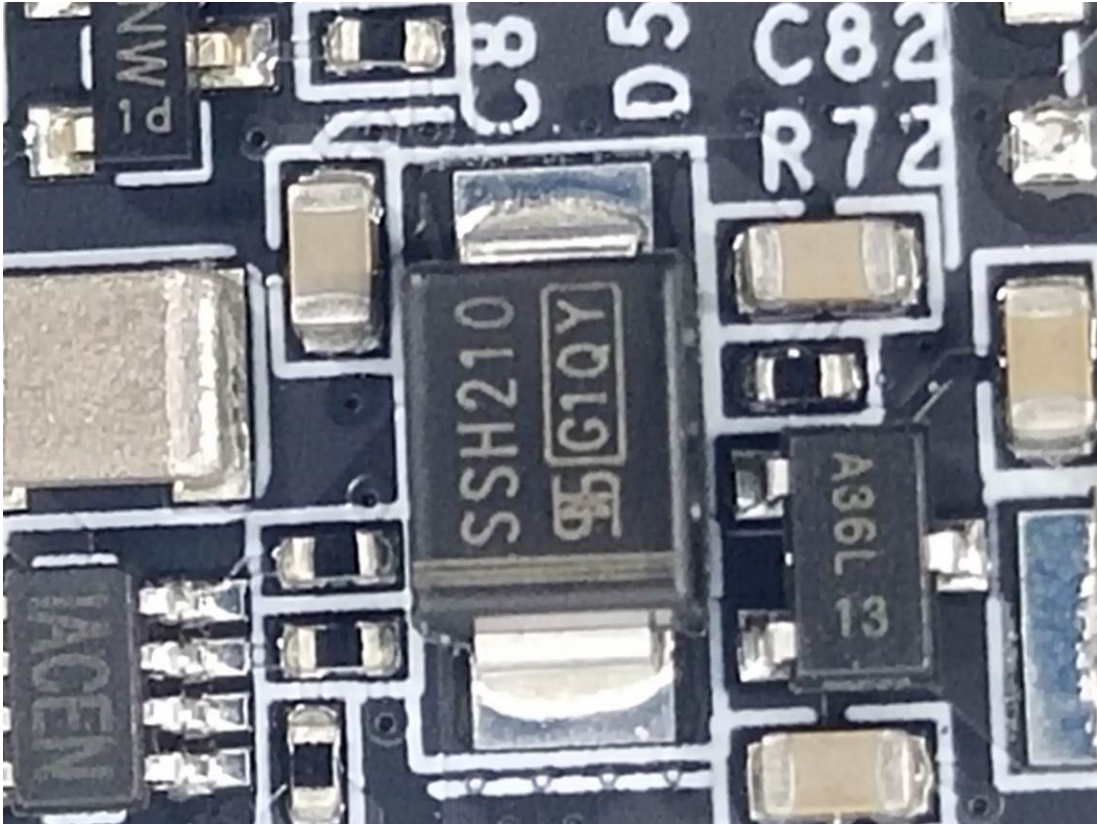




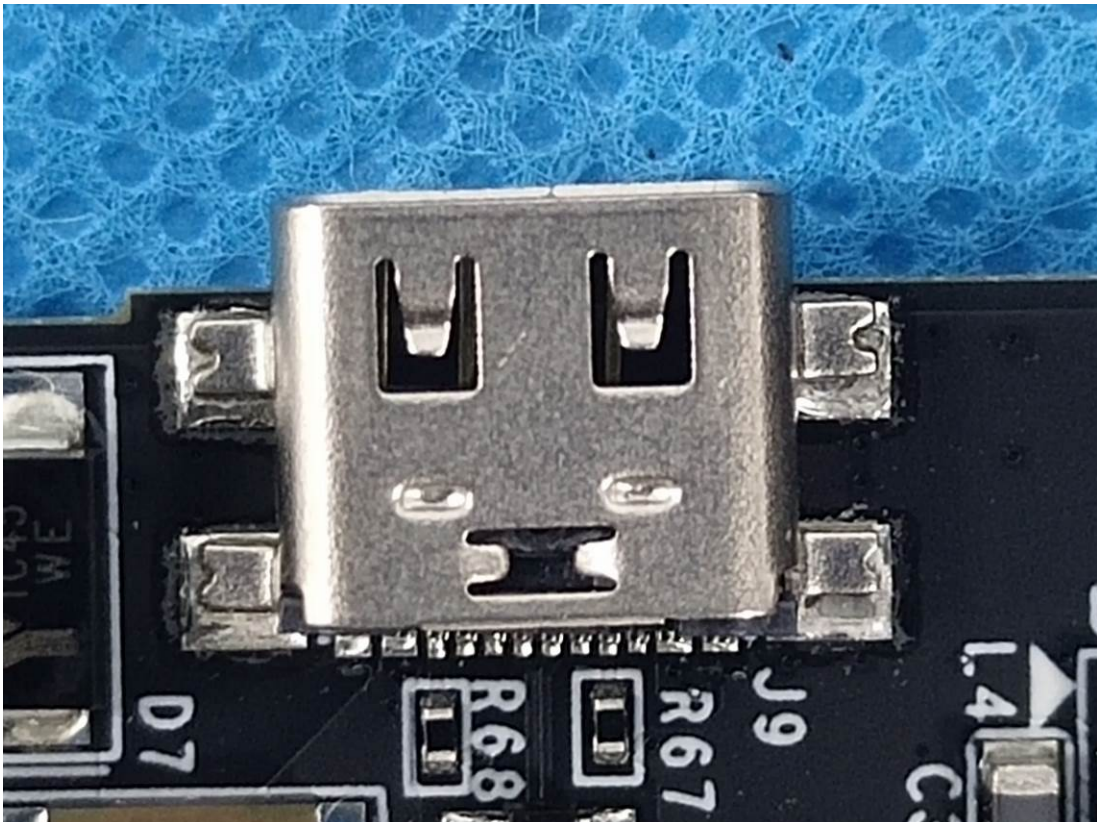
Chip



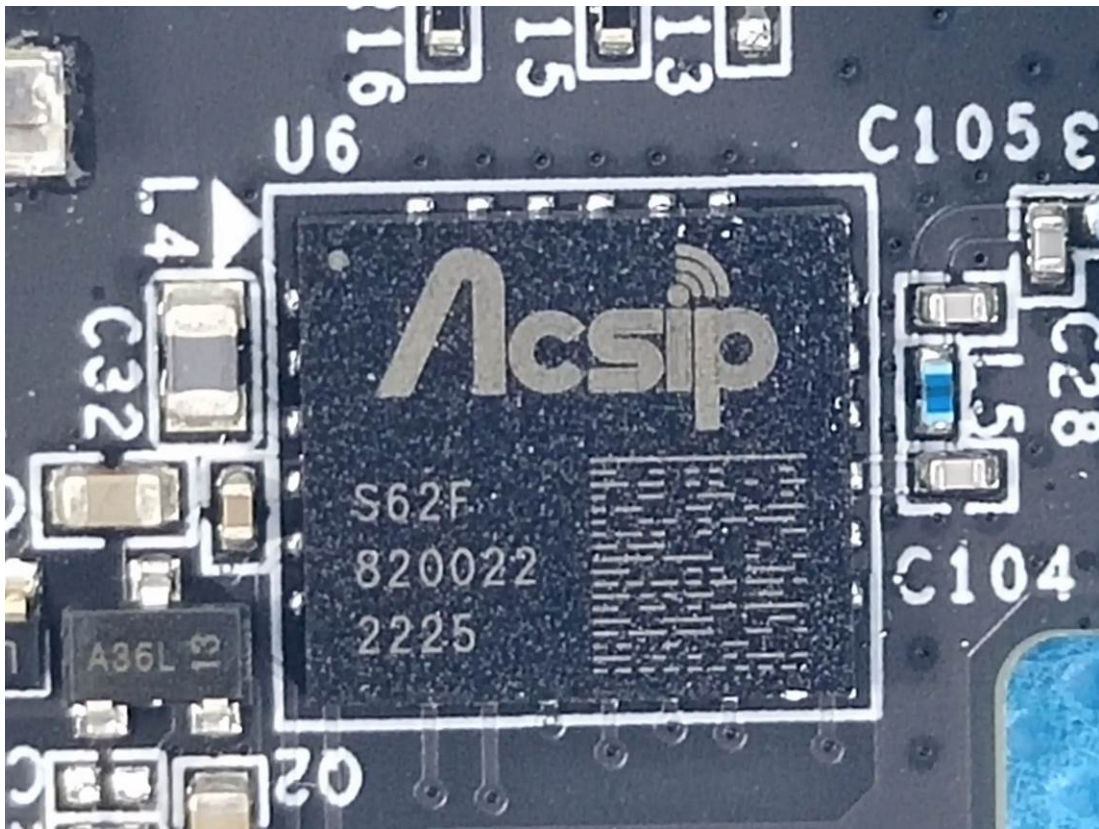
Chip

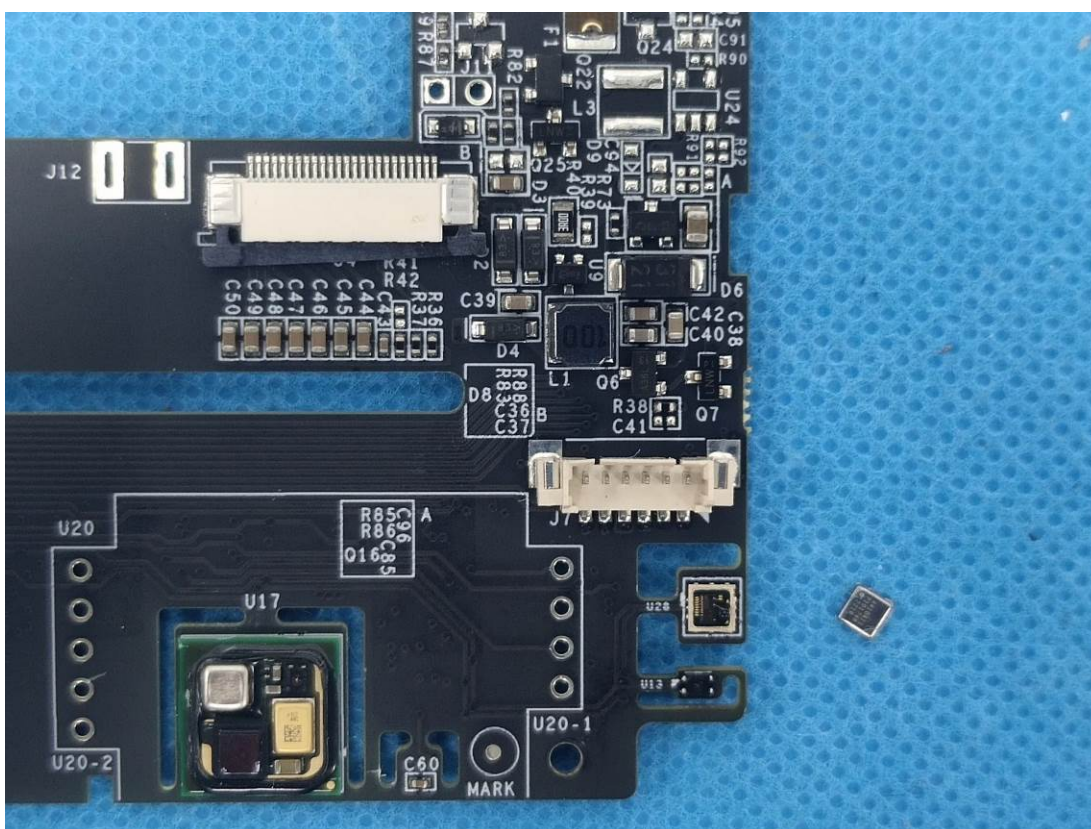
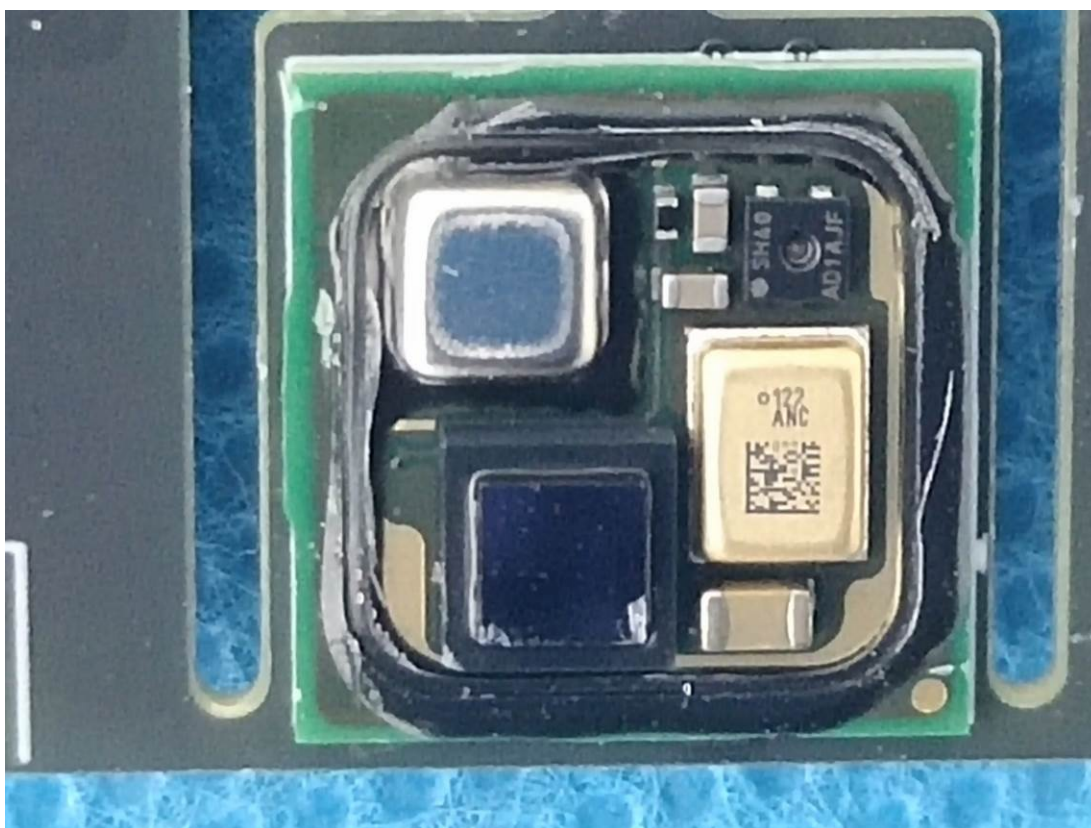


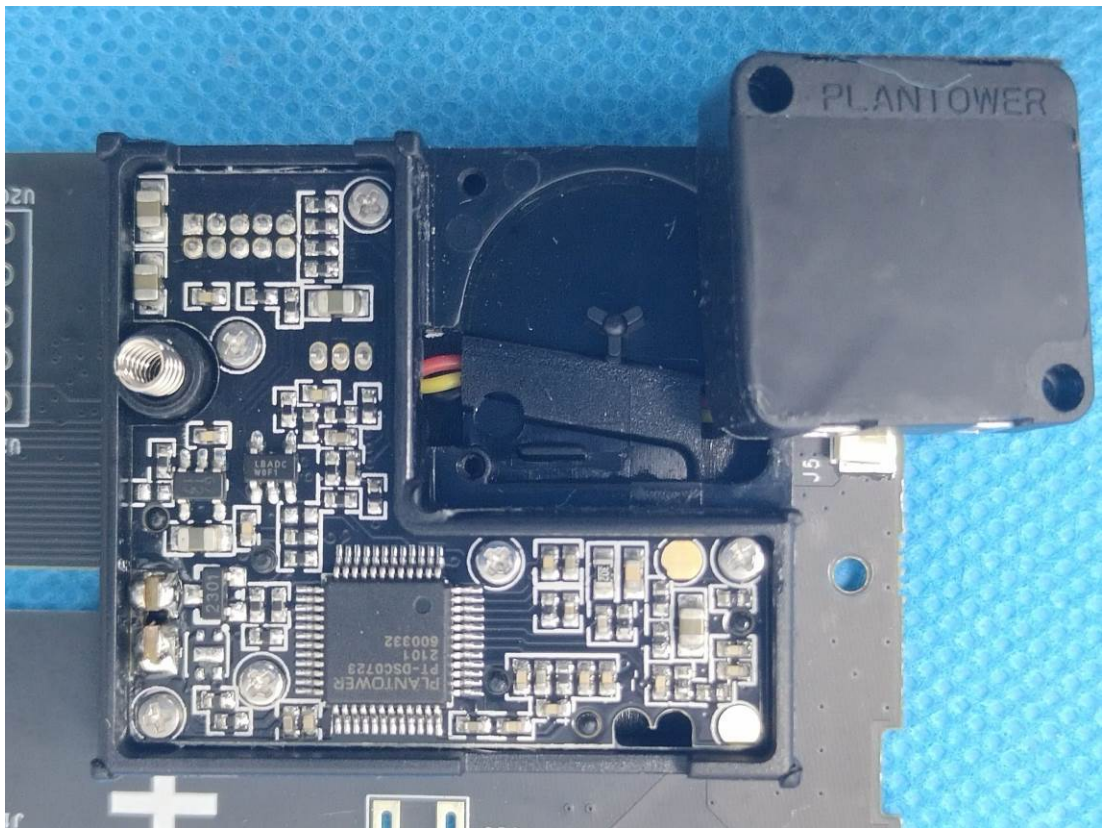
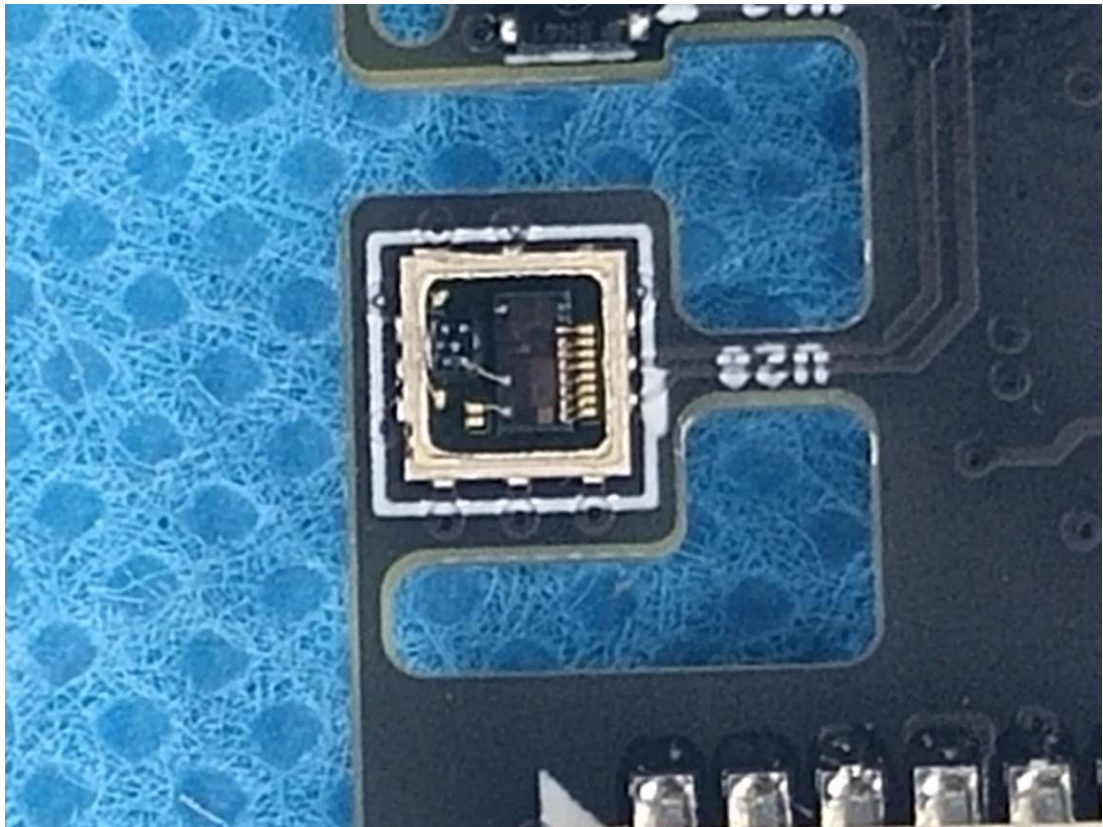
Port



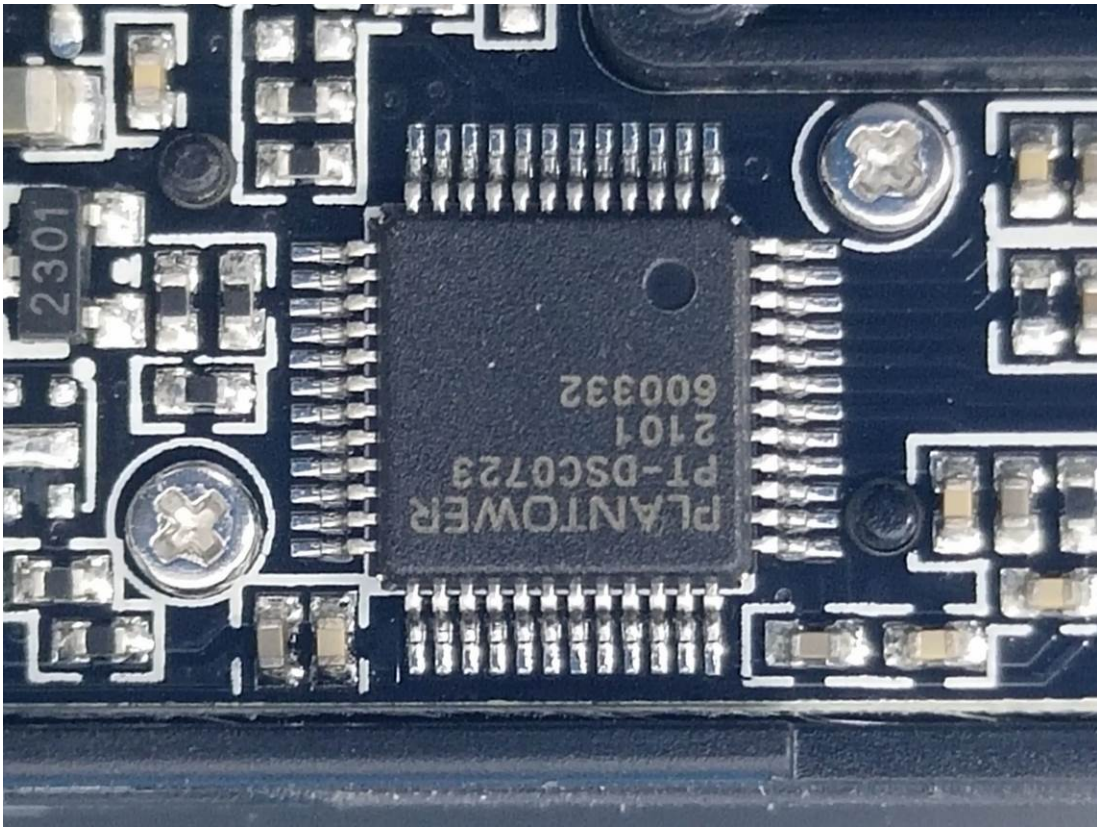
Chip

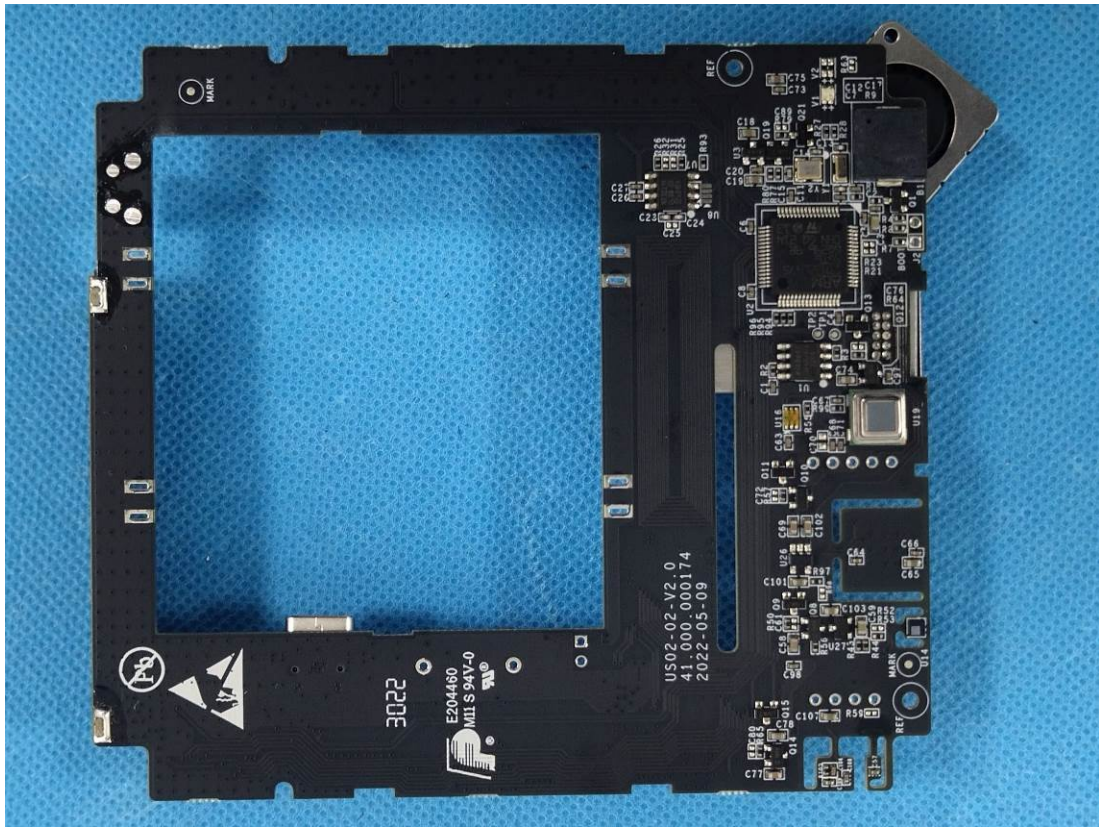




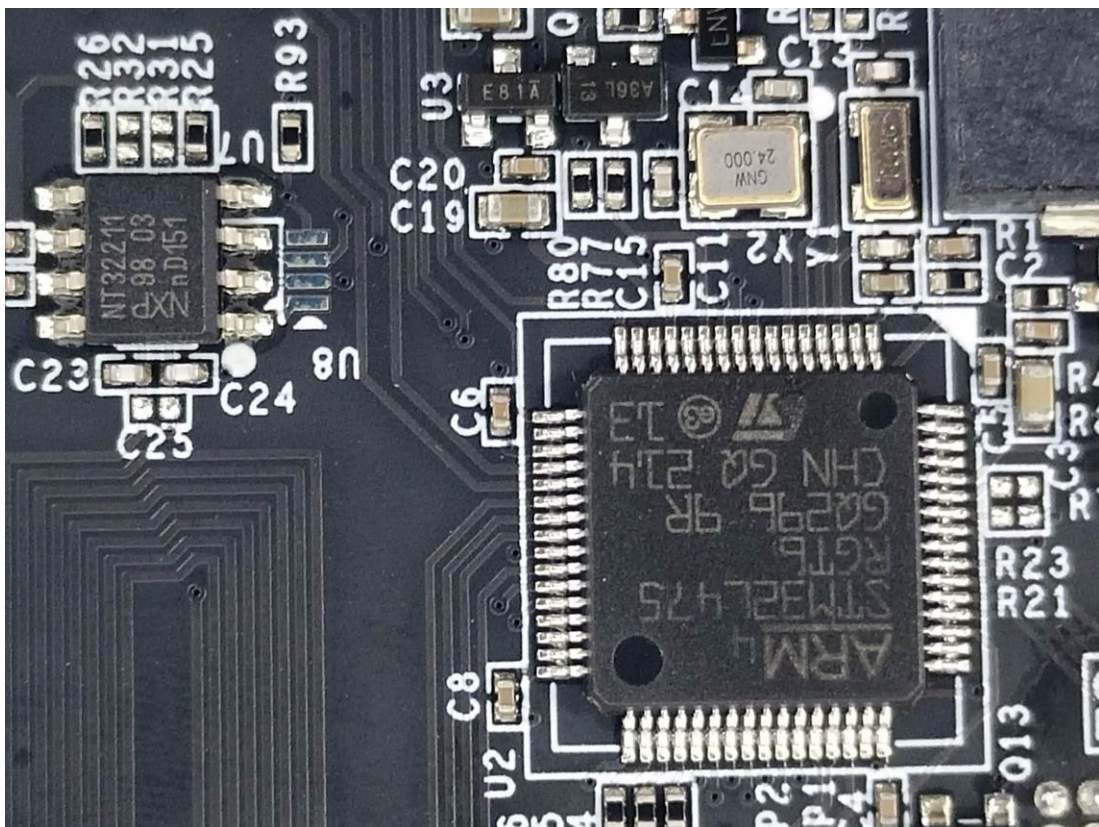


Chip

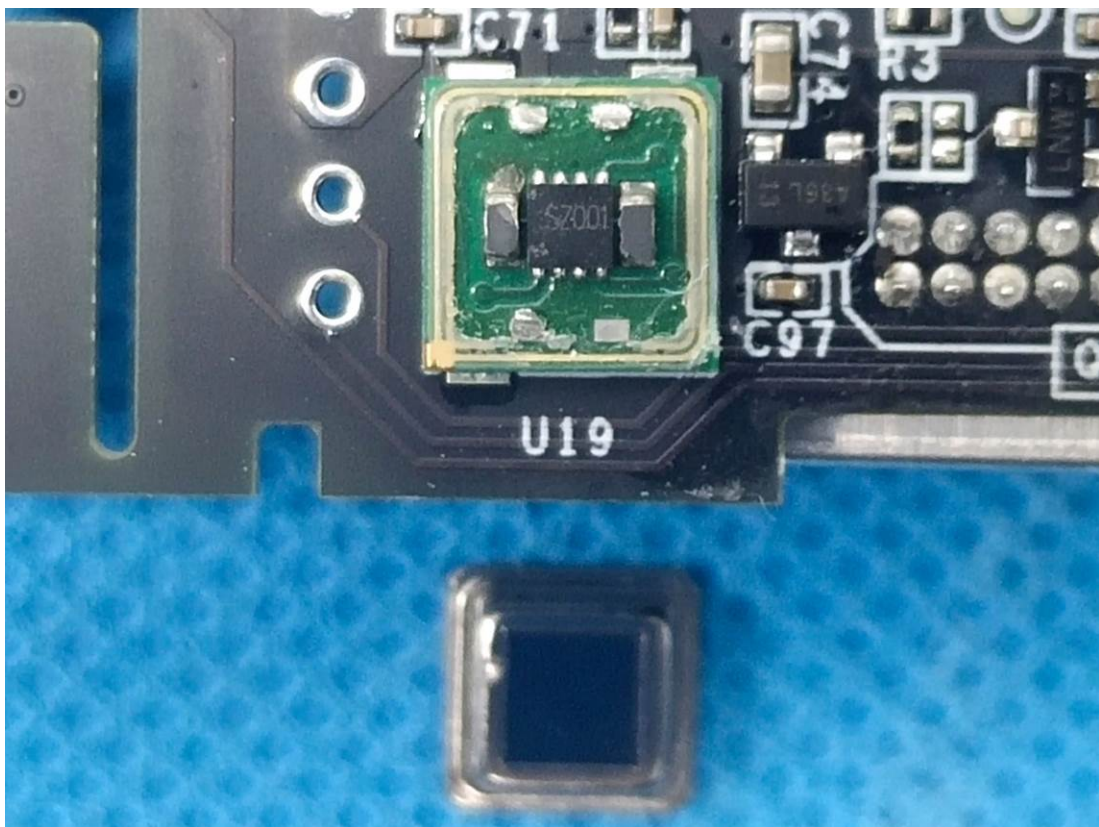
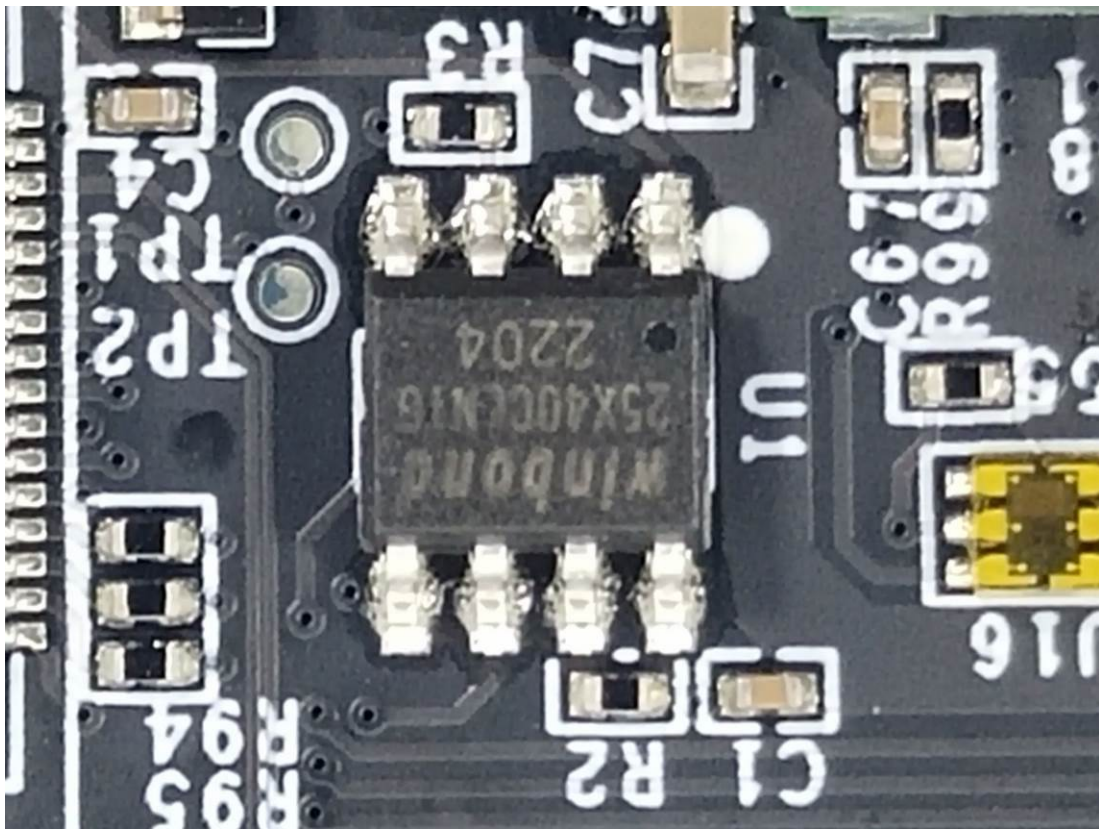


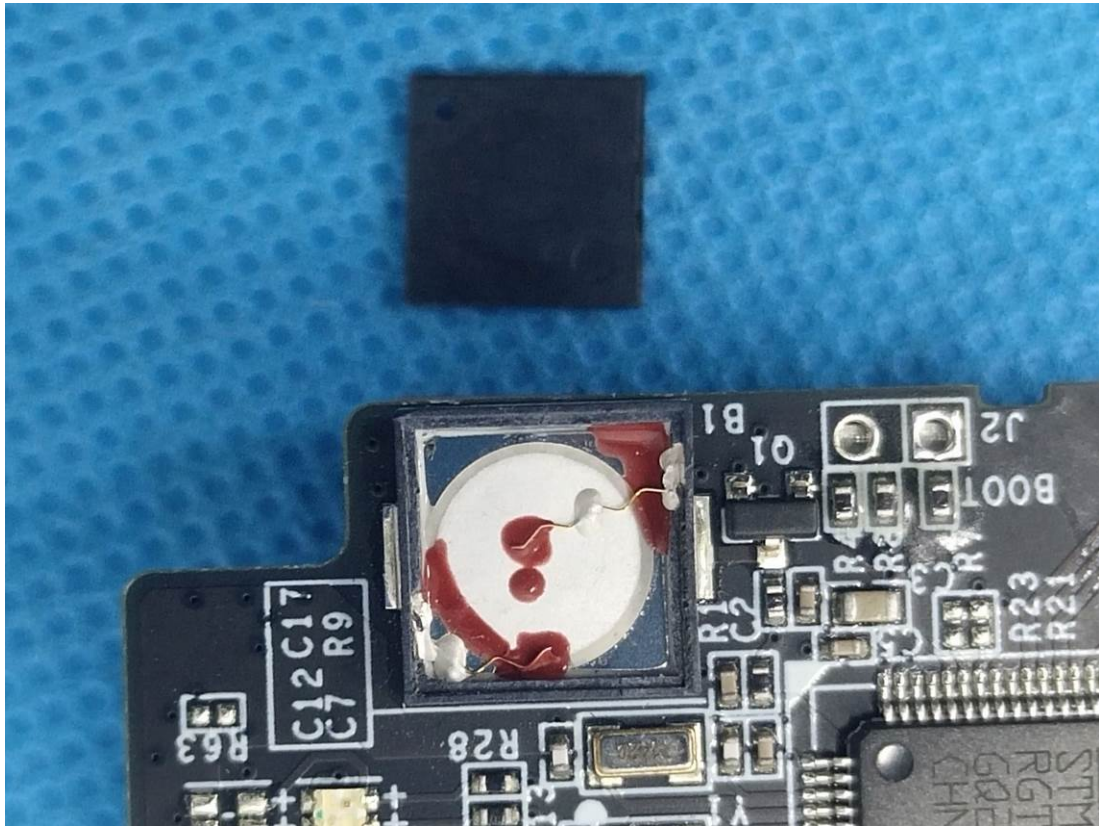


Chip



Chip



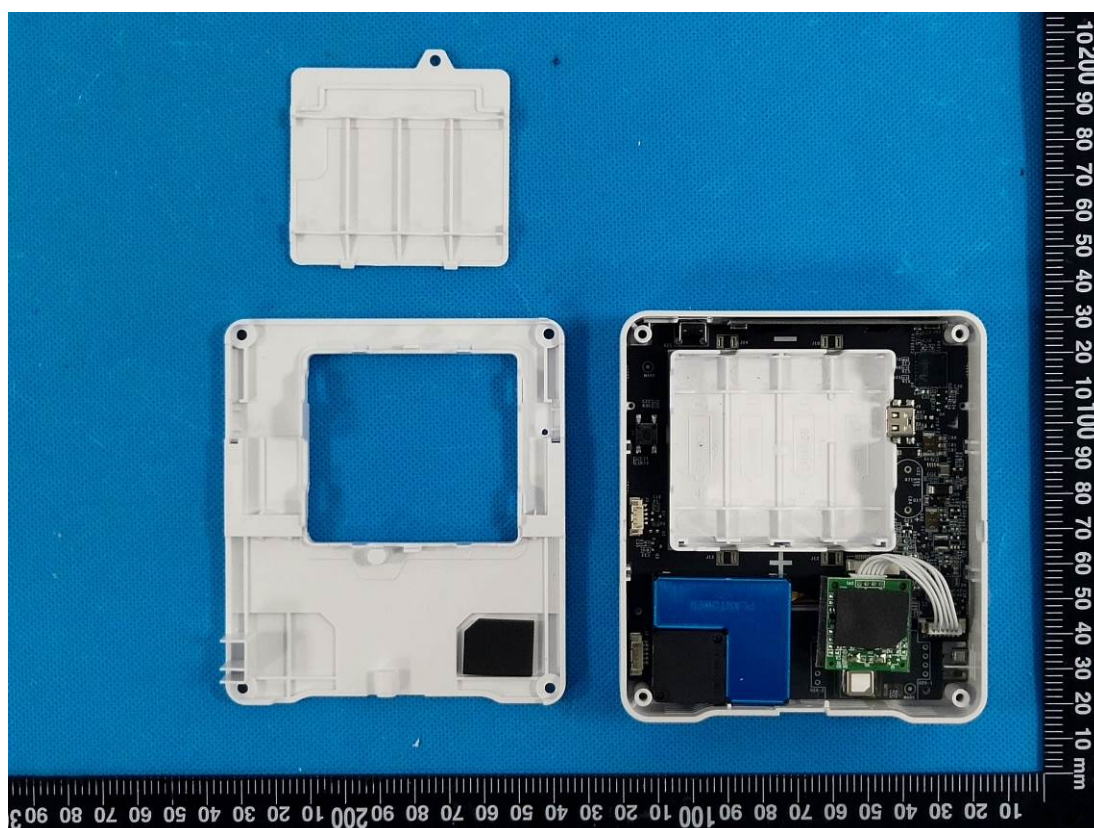


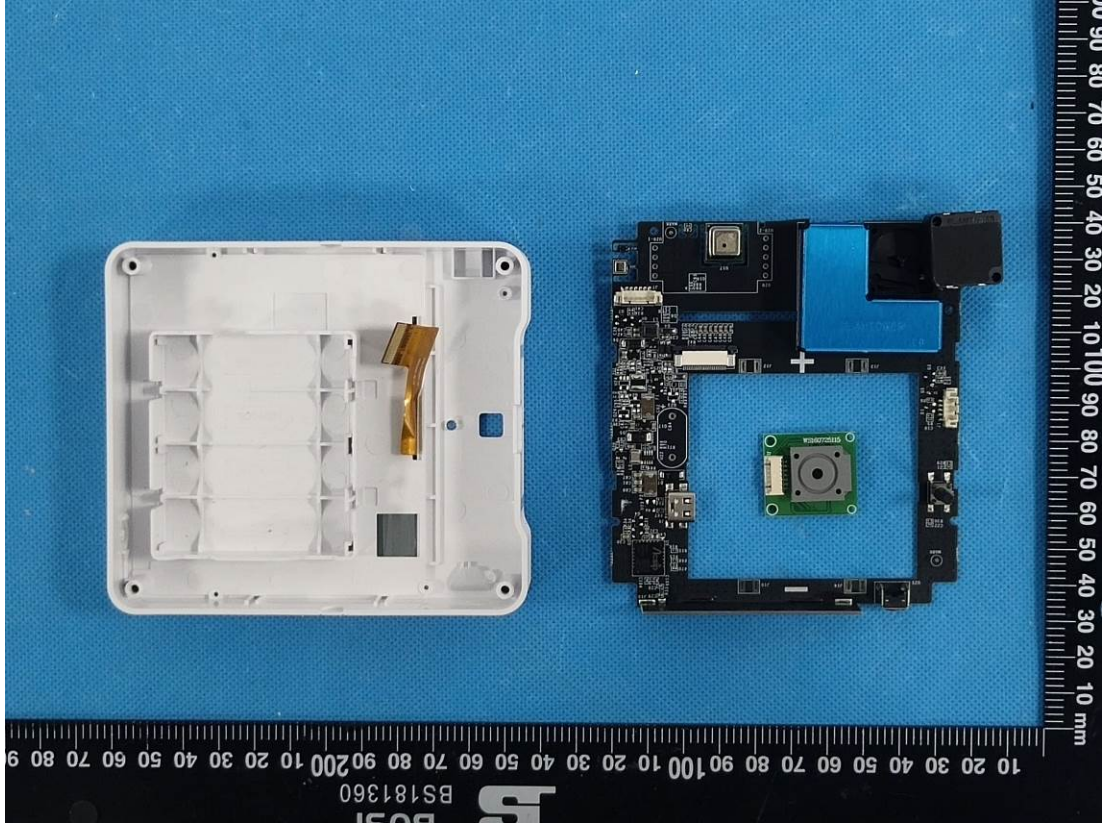
Antenna

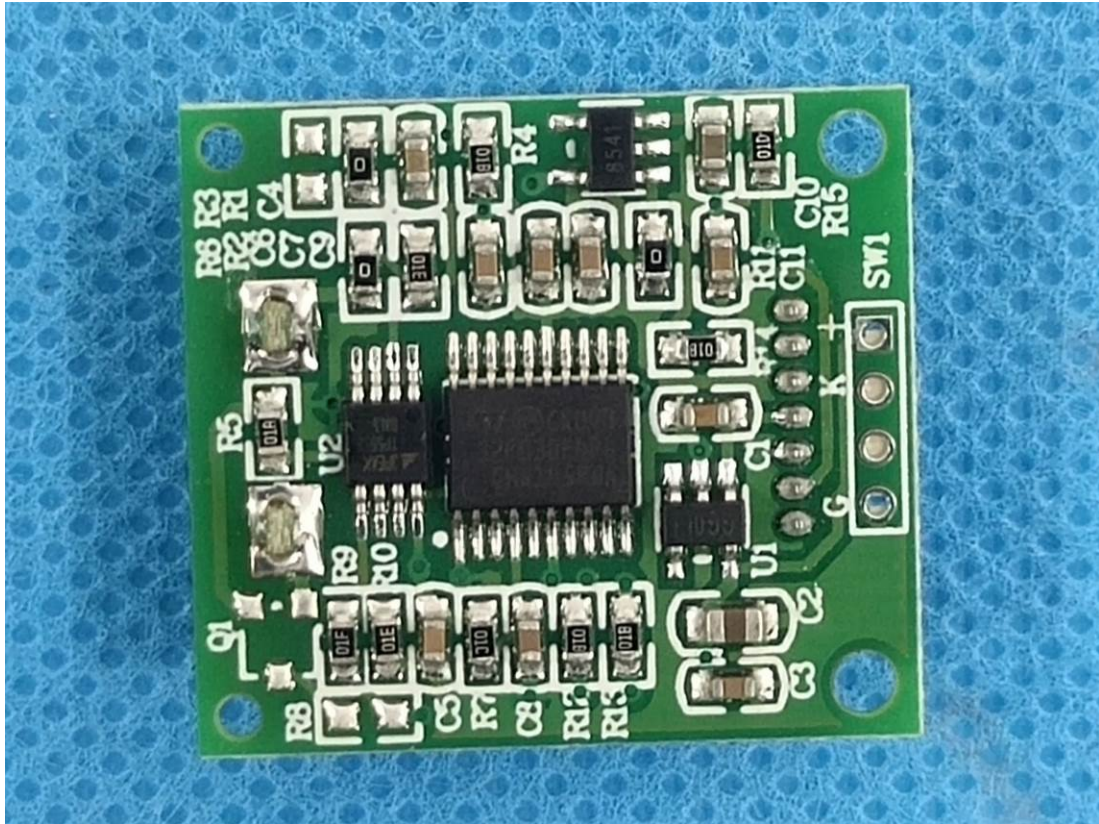




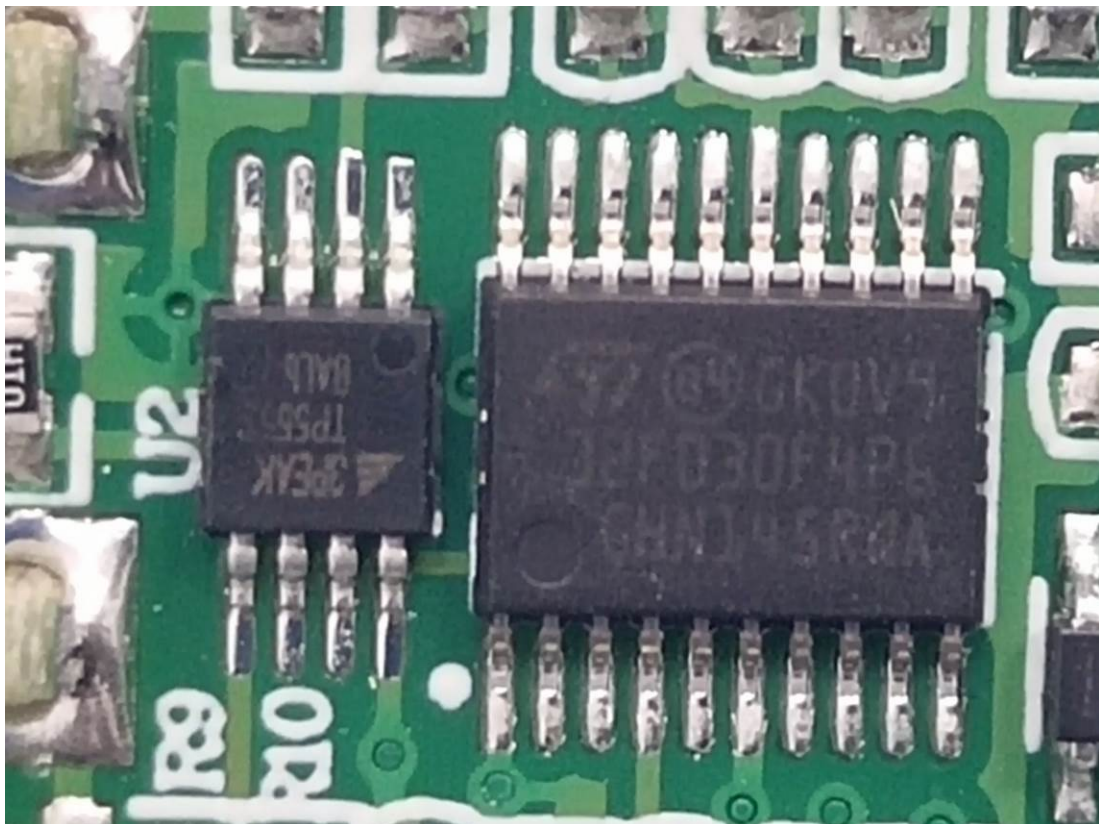
AM319-915M HCHO

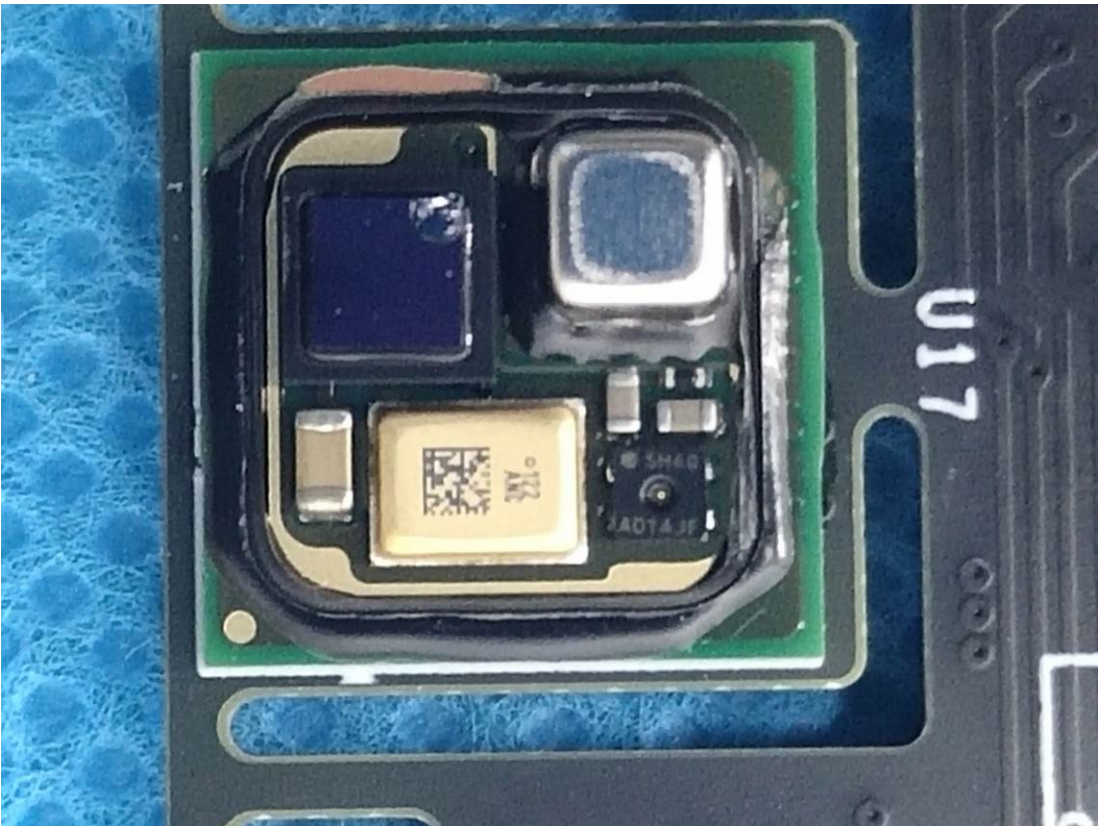
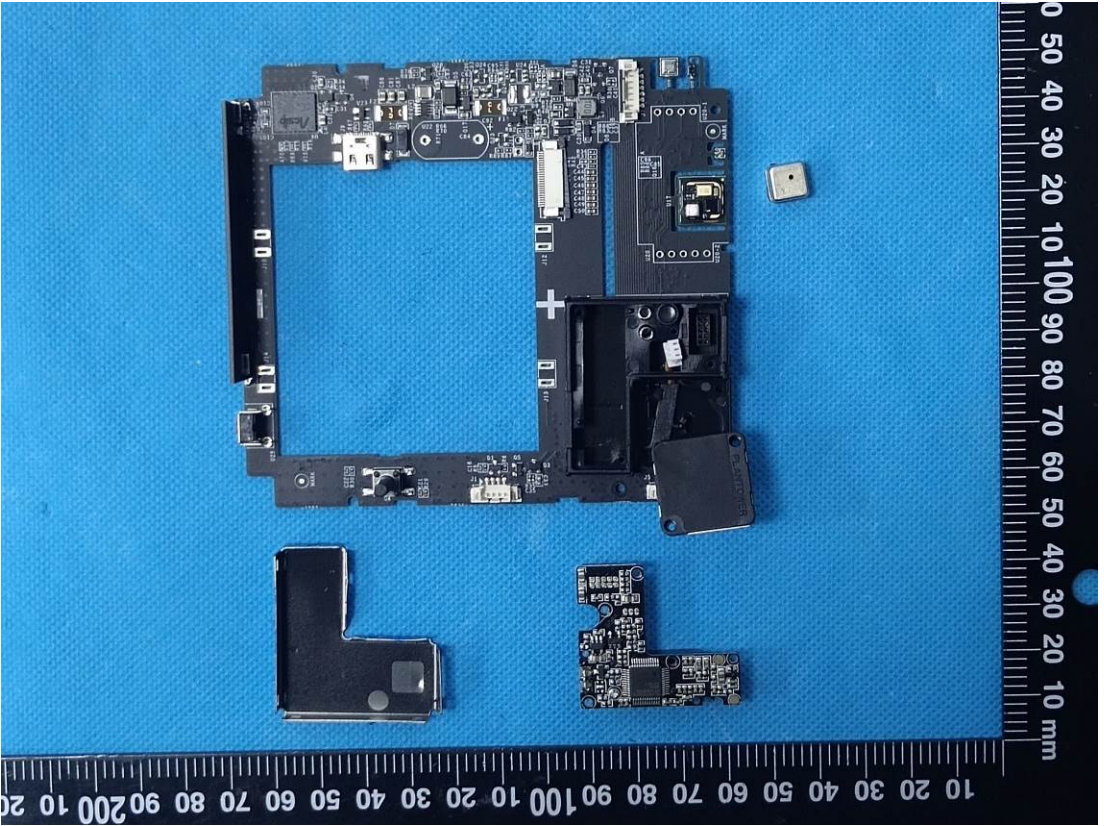


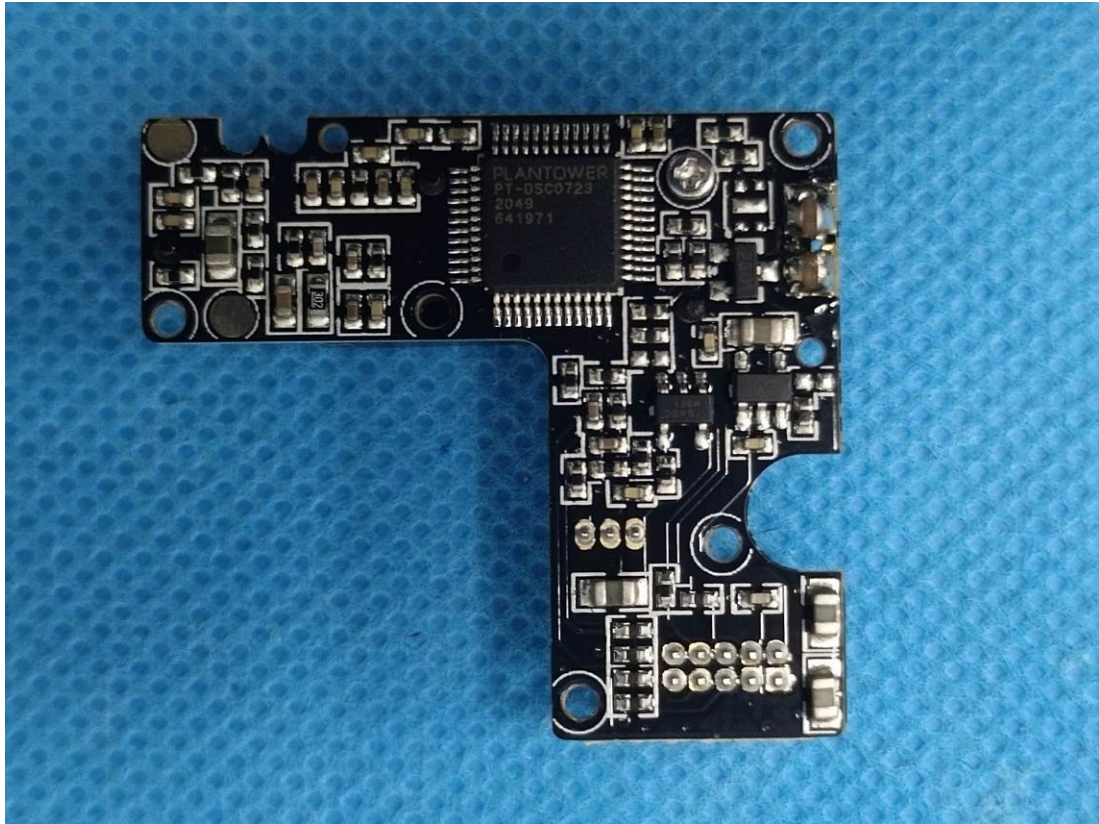




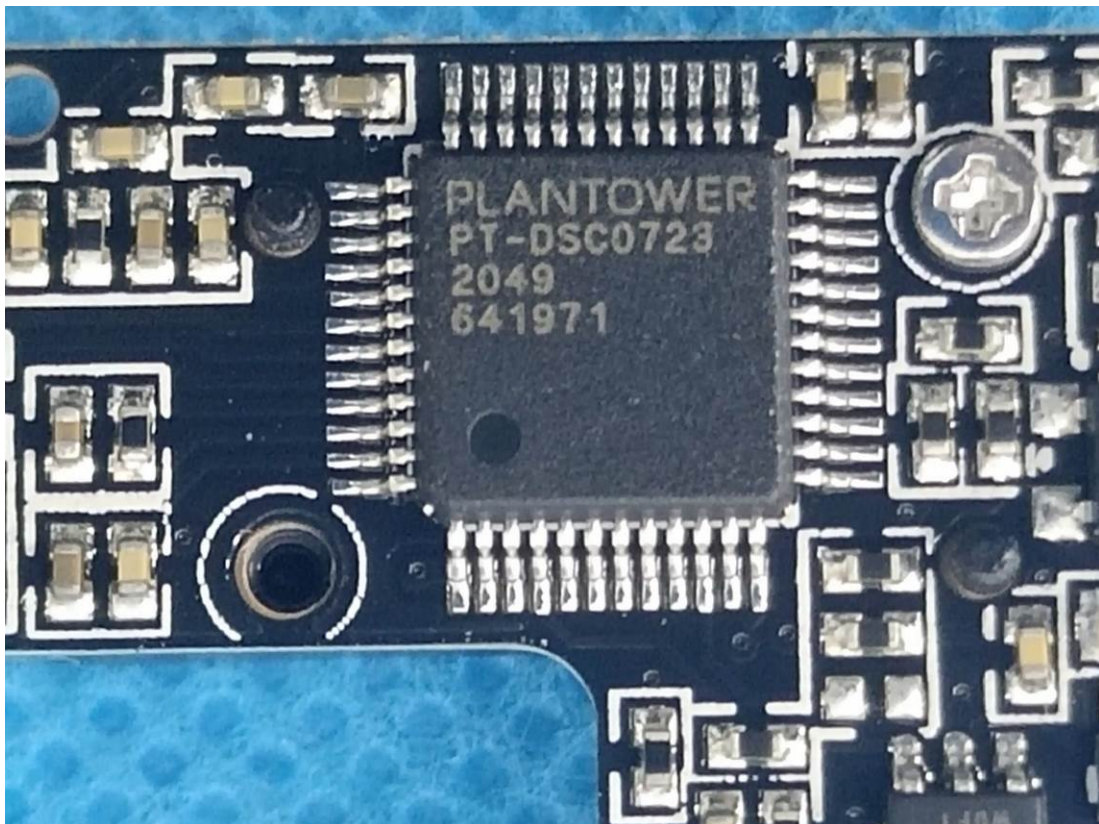
Chip

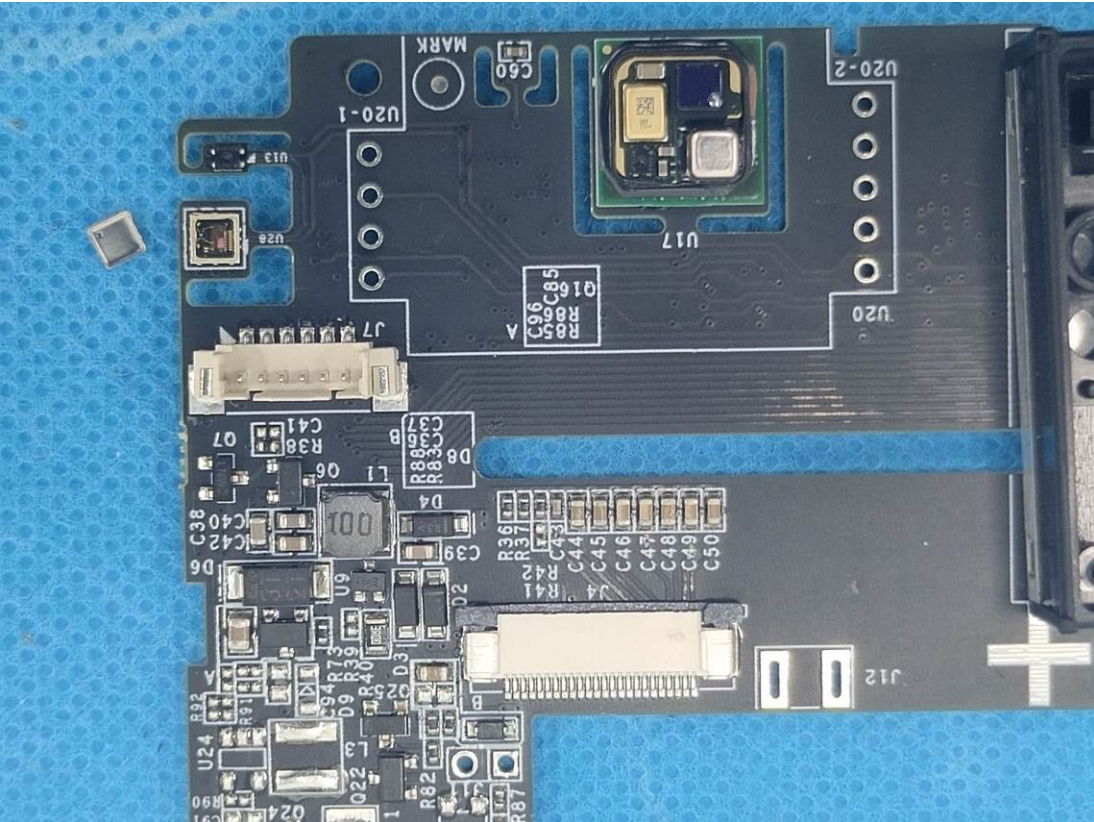
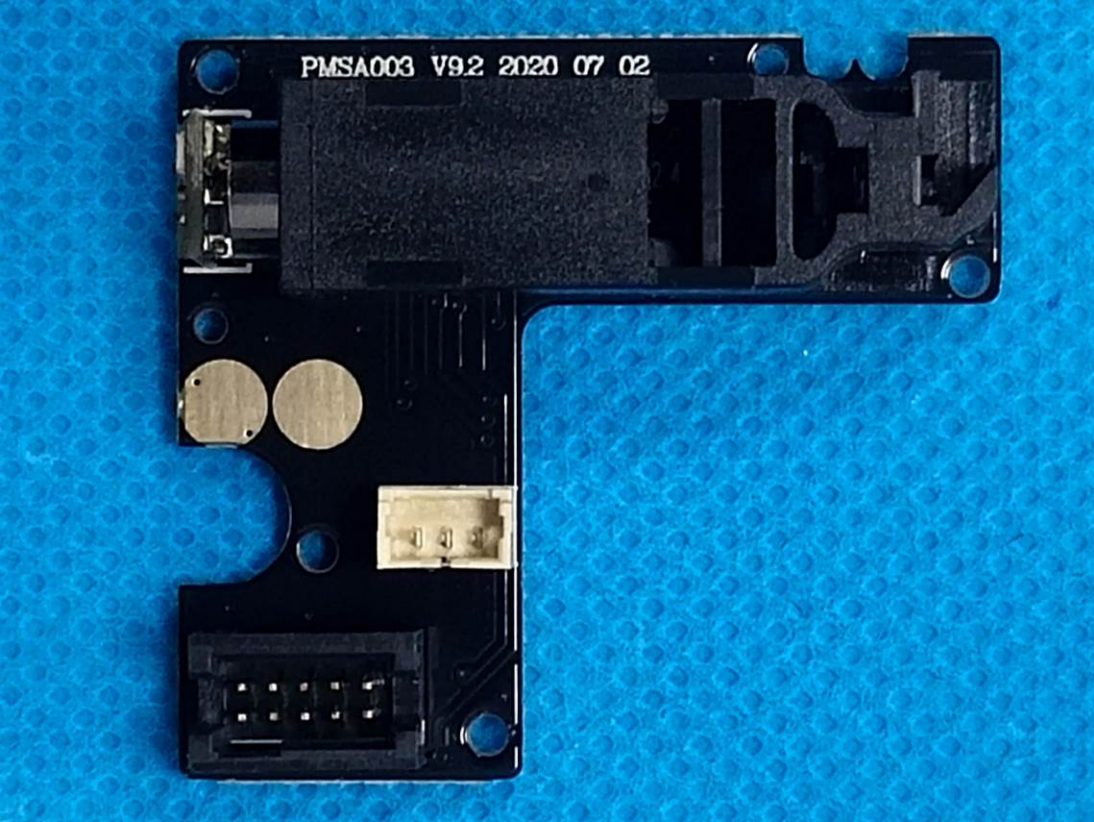


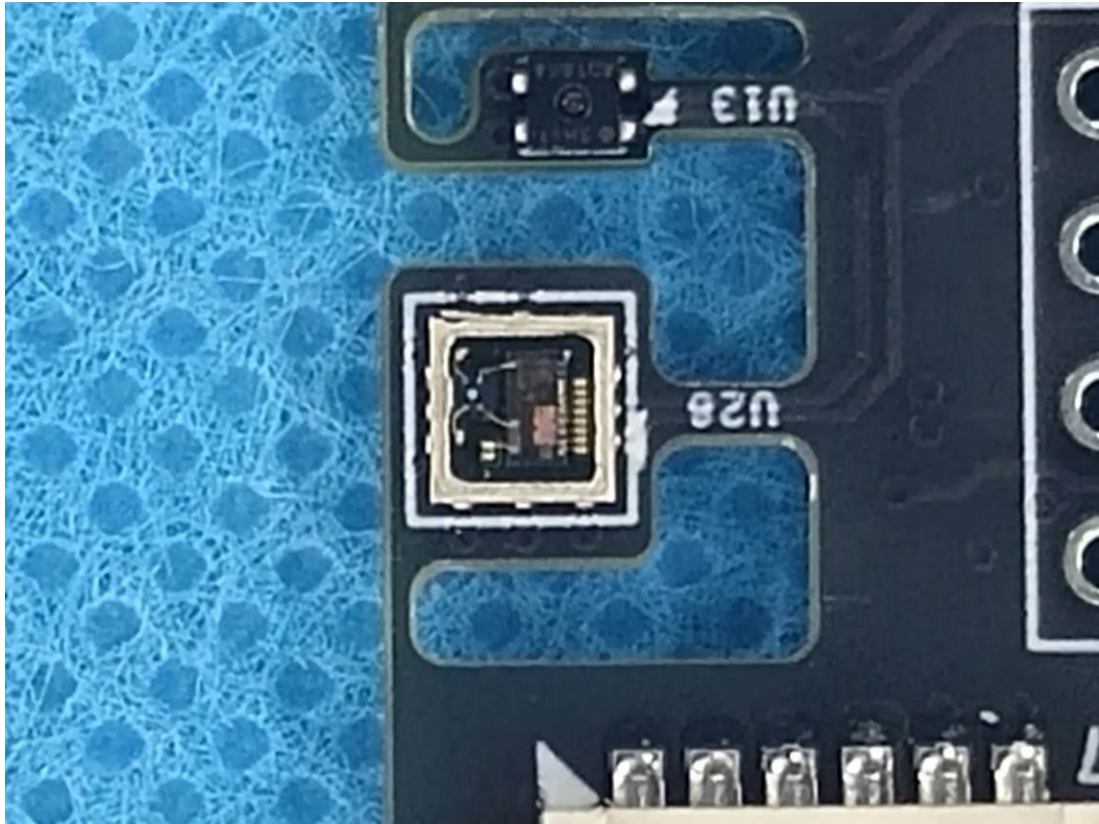




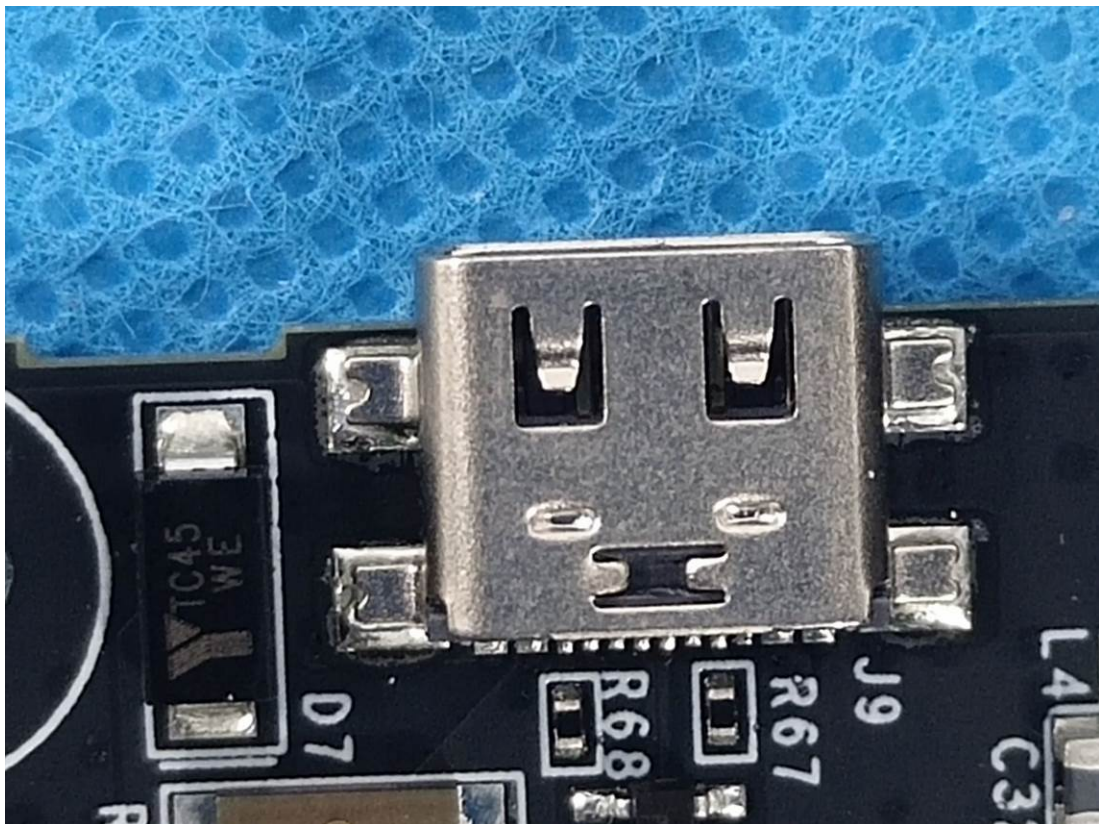
Chip

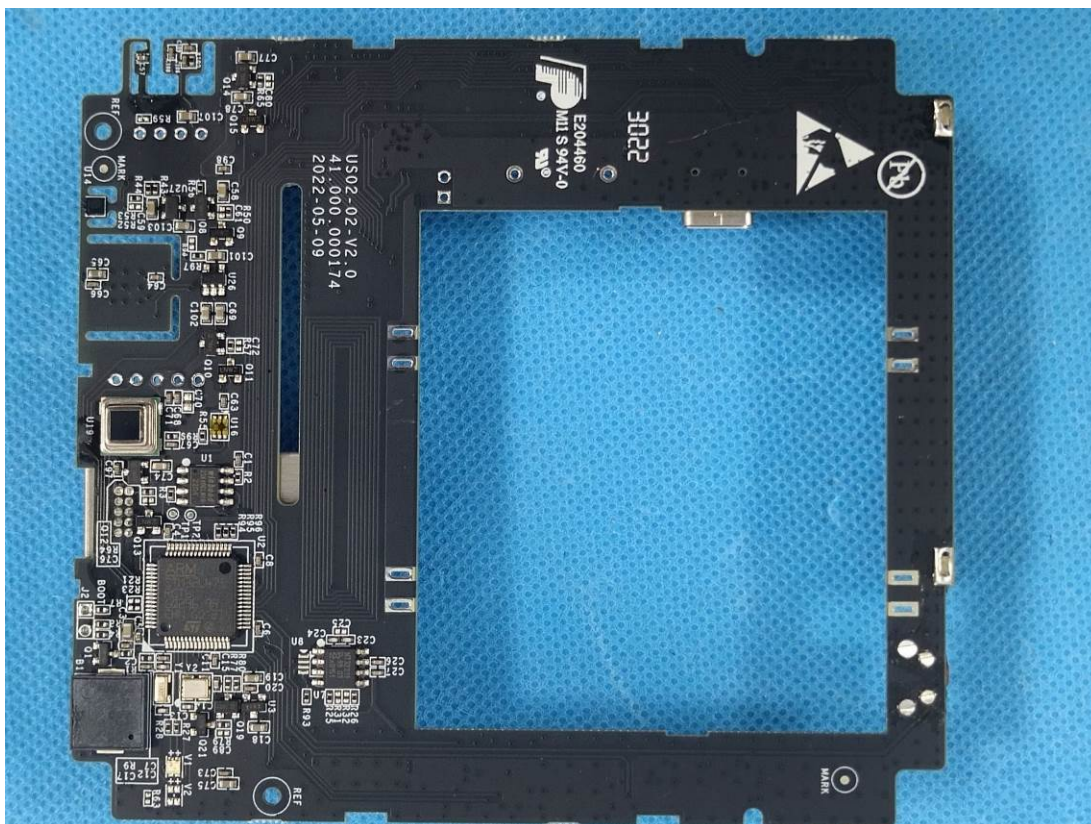






Port

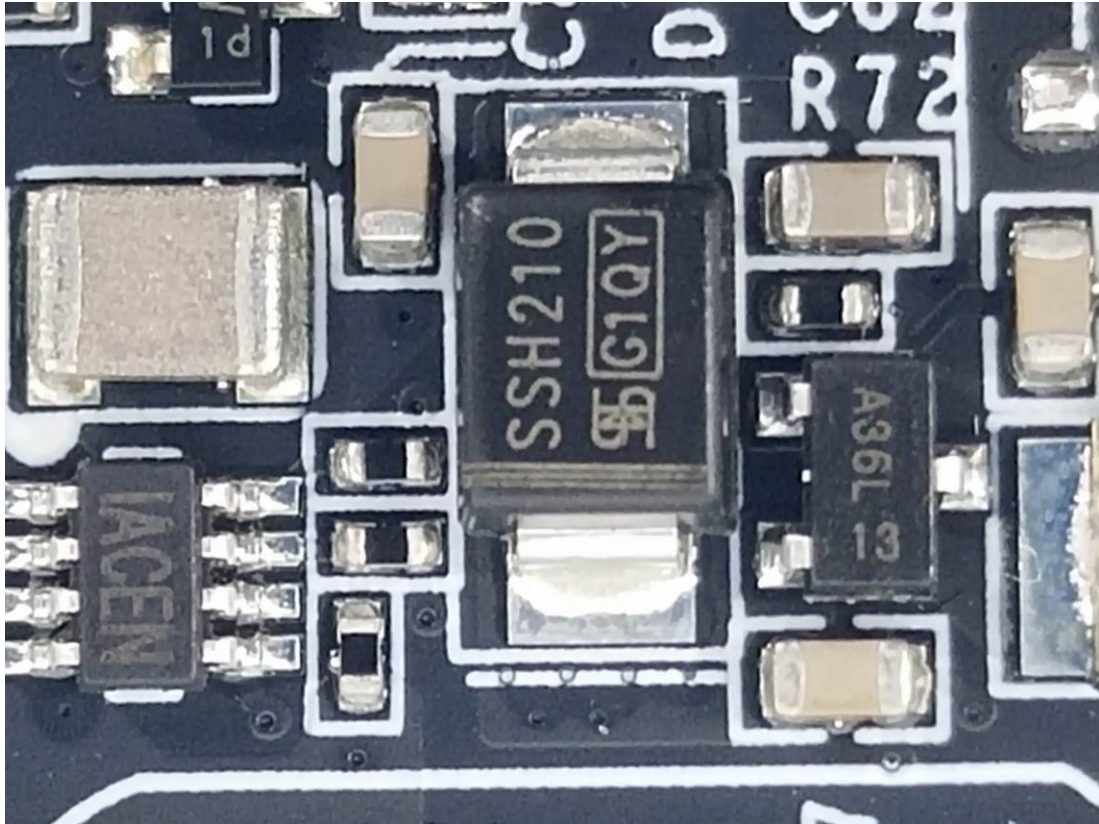




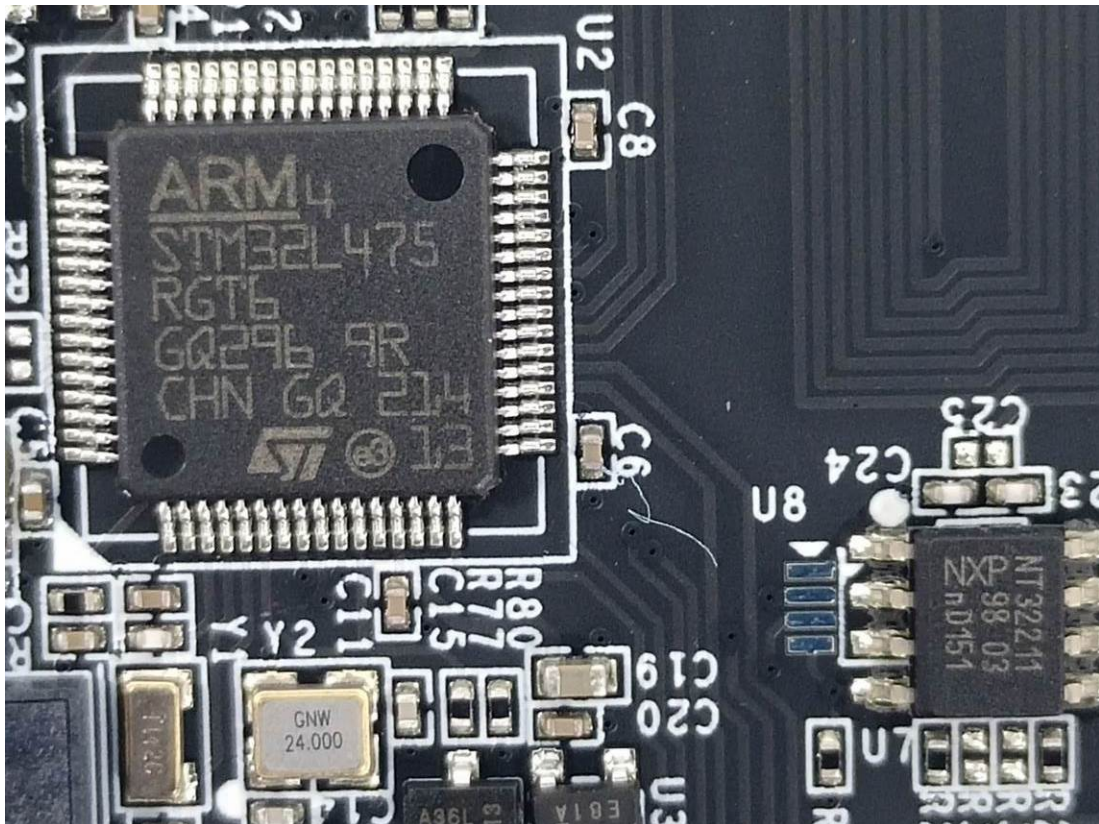
Chip



Chip



Chip



A close-up photograph of a Winbond 25X40CLN1G 2204 serial flash memory chip mounted on a printed circuit board (PCB). The chip is a small, black, square component with eight pins. The text "winbond" is printed in a stylized font, followed by "25X40CLN1G" and "2204" in a standard font. The chip is surrounded by various other components and labels on the PCB, including "C1", "R2", "R95", "R94", "TP2", "TP1", "C4", "U", "6", "69", "67", and "66".

