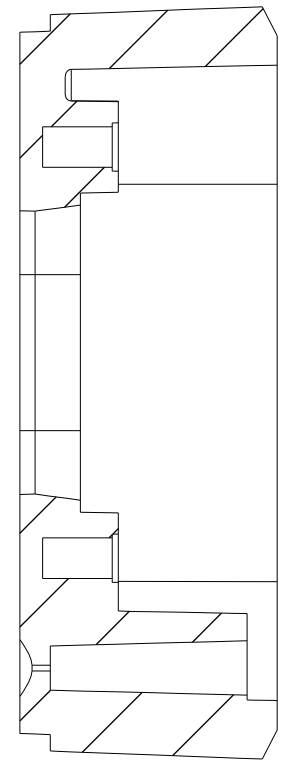
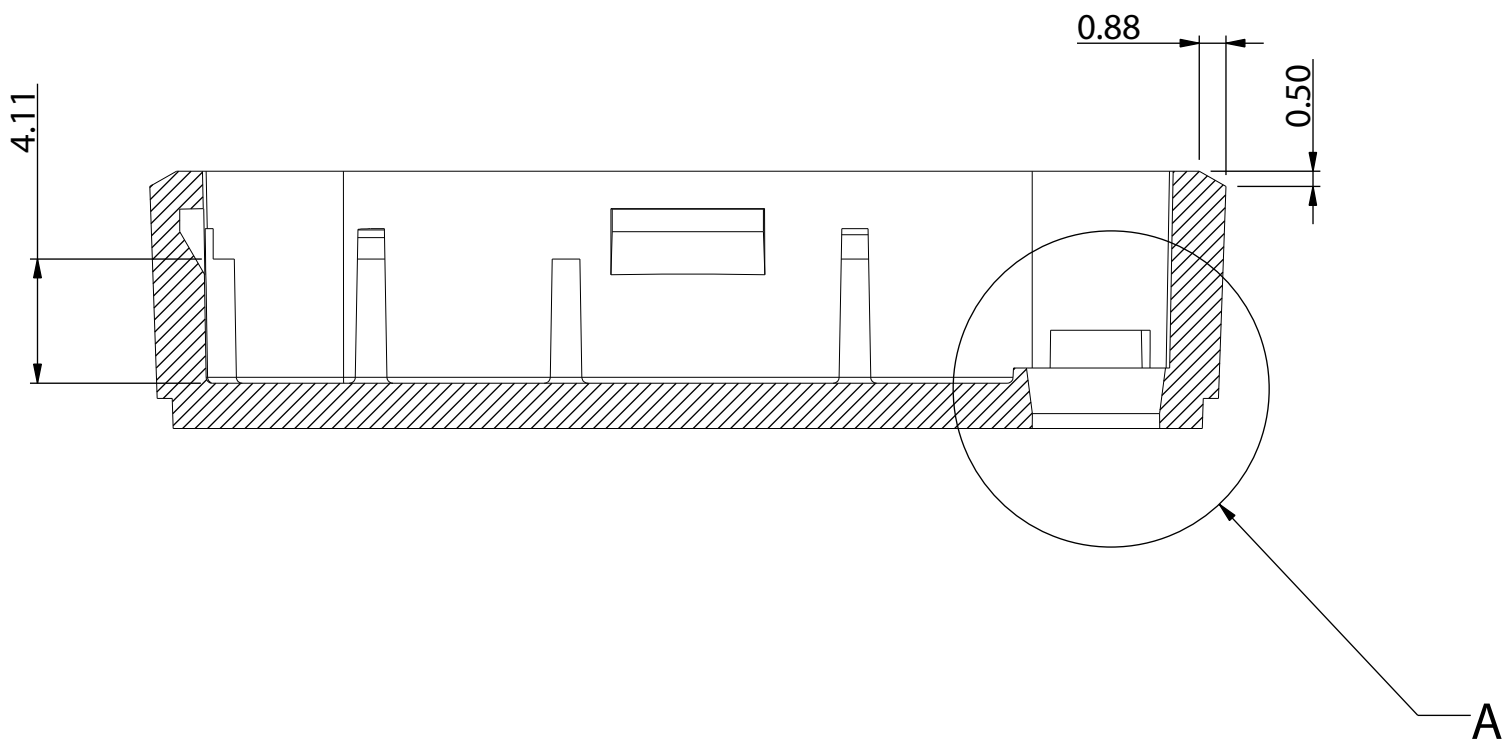
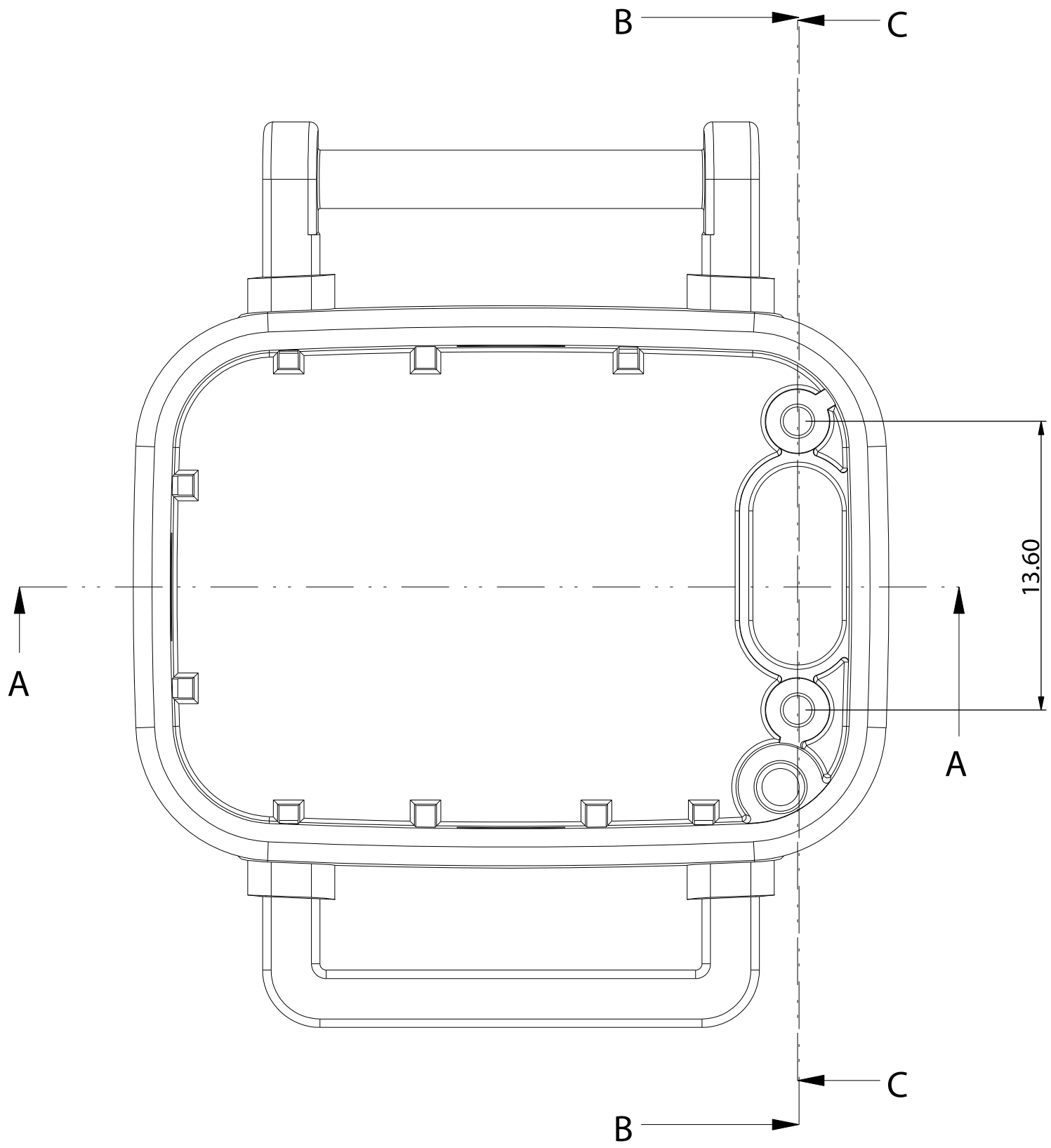


NOTES:
(SEE SHEET 1 UNLESS OTHERWISE NOTED)

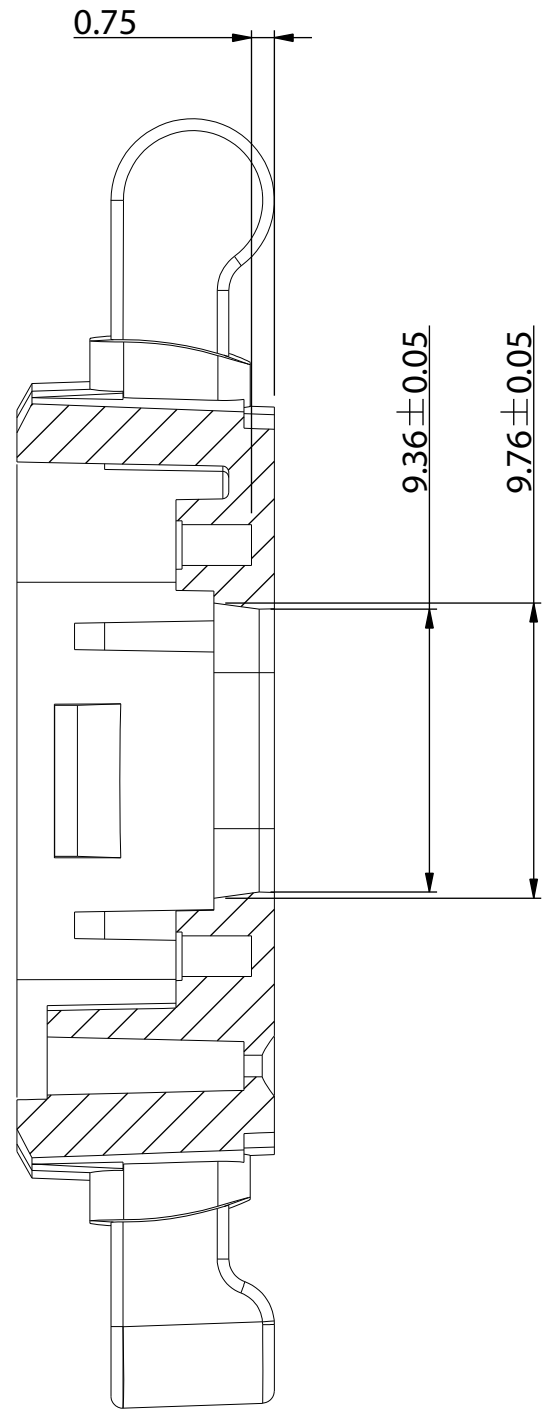
| REVISIONS | | | | | |
|-----------|------|---------|-------------|------|----------|
| ZONE | REV. | ECO NO. | DESCRIPTION | DRFT | APPROVED |
| - | - | - | See Sheet1 | - | - |
| DATE | | | | | |



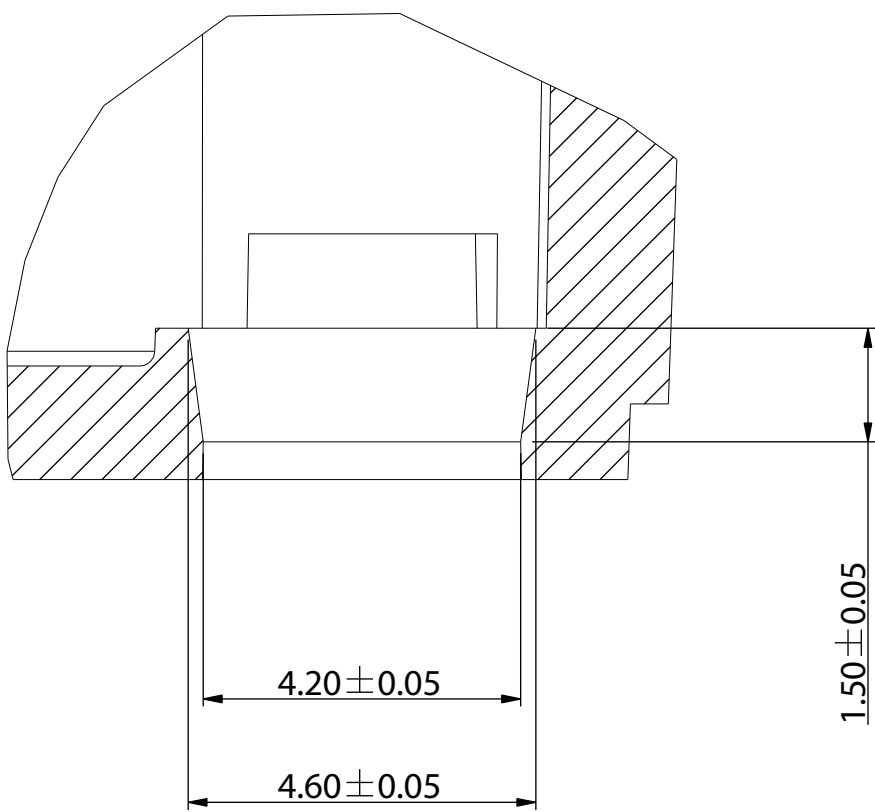
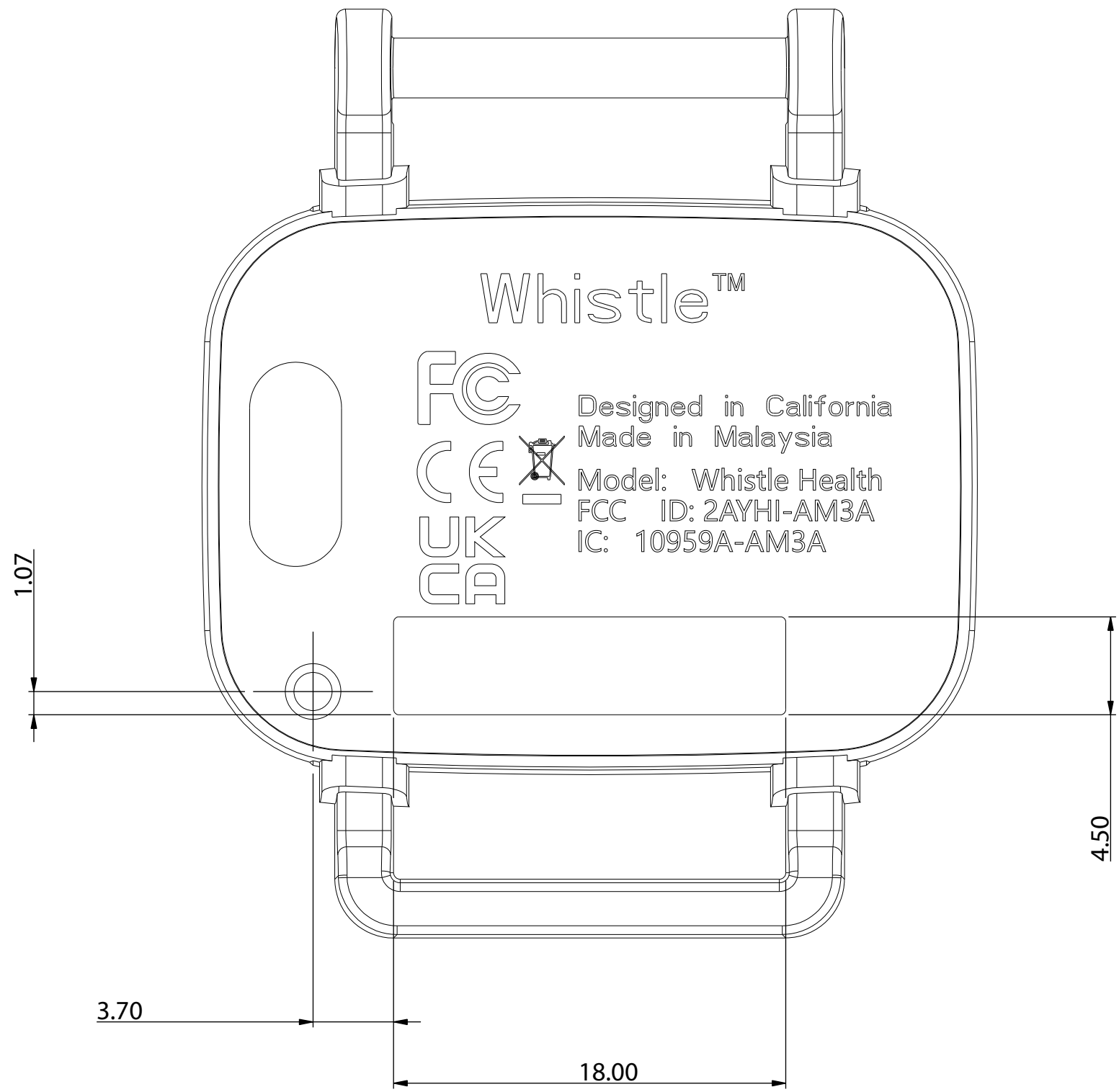
SECTION B-B



SECTION A-A



SECTION C-C



Detail A (10/1)

WHISTLE LAB CONFIDENTIAL
THIS DOCUMENT CONTAINS CONFIDENTIAL
AND PROPRIETARY INFORMATION AND EXCEPT
WITH WRITTEN PERMISSIONS OF WHISTLE LAB
SUCH INFORMATION SHALL NOT
BE PUBLISHED OR DISCLOSED TO OTHERS OR
USED FOR ANY PURPOSE OTHER THAN ON
BEHALF OF WHISTLE LAB. THIS
DOCUMENT SHALL NOT BE COPIED IN WHOLE
OR IN PART, INCLUDING ELECTRONICALLY.

| WHISTLE | | |
|---|--------------|--------------|
| TITLE: | | |
| WAM2_BOTTOM ASSEMBLY PLASTIC WITH OVERMOLDING V3 | | |
| SIZE | DWG. NO. | REV |
| D | 112-30178-00 | A |
| SCALE: 4:1 WEIGHT: | | SHEET 3 OF 3 |