

# 规格书

## SPECIFICATION FOR APPROVAL

客户名称

CUSTOMER NAME: 睿联

产品名称

PRODUCT NAME: 2.4/5G 5dBi 黑色天线 SMA

客户料号



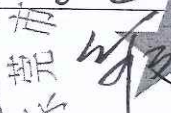
CUSTOMER P/N: 54.07.001.0097A

仁丰料号

Ren Feng P/N: U00T01S010N03637 REV: A

内部结构

Internal structure: PCB+弹簧

	MANUFACTURER SIGNATURE	CUSTOMER SIGNATURE
CHECKED BY:		
AUDITOR BY:		
APPROVED BY:		
DATE:	2023.07.13	

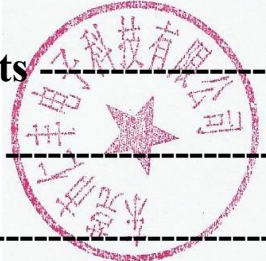
## 2.Resume

Edition No.	Modify chapter	Change recorder

---

# Contents

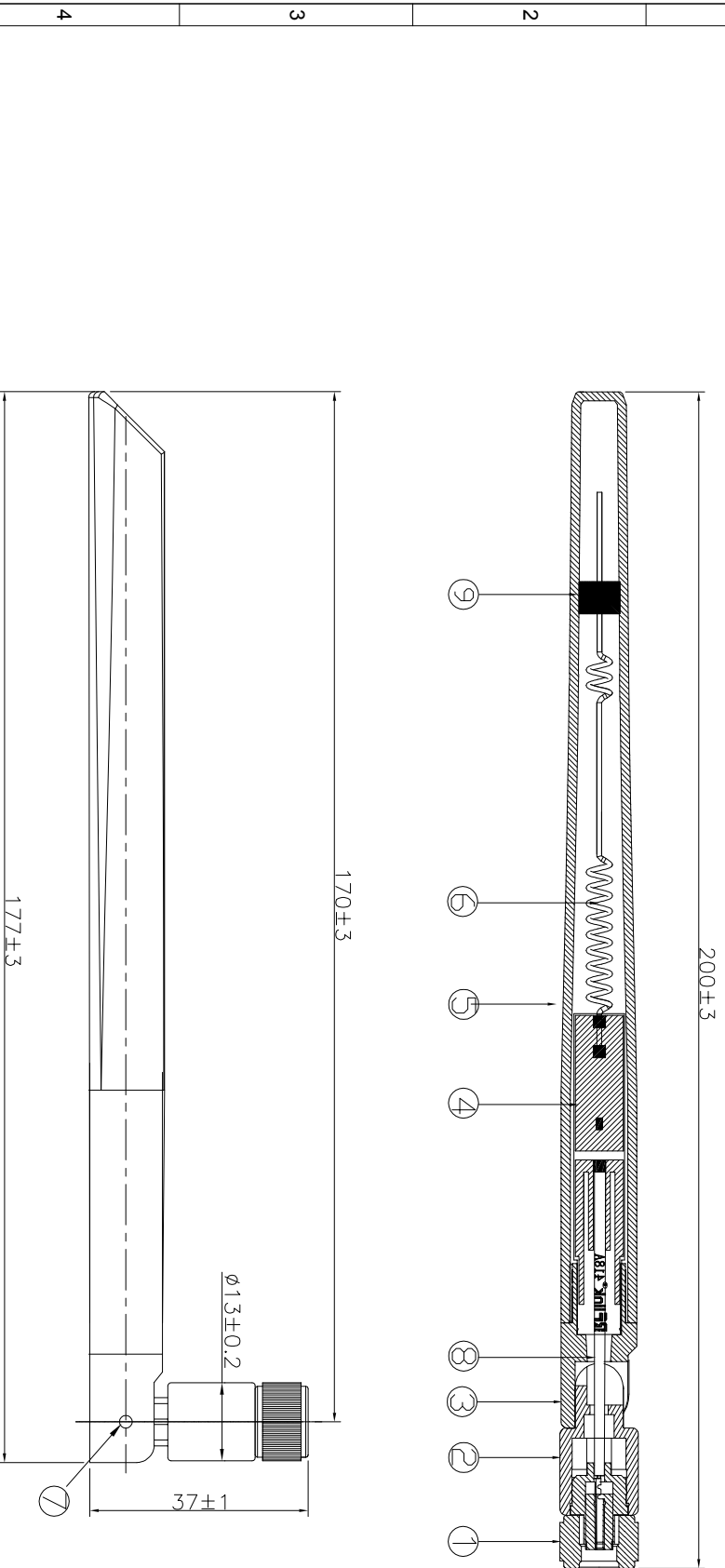
<i>Description</i>	<i>Page</i>
1、 Cover -----	
2、 Resume -----	
3、 Contents-----	
4、 Specifications sheets-----	
5、 End product chart-----	
6、 Testingreport-----	



#### 4.Specificationsheets

Main technical specifications	
Frequency Range (MHZ)	2400-2500
	5150-5850
Impedance( $\Omega$ )	50 $\pm$ 10
Gain(dBi)	2.4G:3.95 5G:4.27
ReTurnLoss(dB)	$\leq$ -9.5
VSWR	$\leq$ 2.0
Admitted Power	1W
Polarization	Linear, Vertical
Radiation	Omni-directional
Connector Type	SMA
Physical Properties	
Antenna Base	PP
Operating Temp	-20 $^{\circ}$ C ~+60 $^{\circ}$ C
Storage Temp	-20 $^{\circ}$ C ~+70 $^{\circ}$ C

REV	DATE	DESCRIPTION
A	2023-06-29	NEW ISSUE



规格Specification:

频率Frequency Range: 2.4~2.483GHz  
 5.15~5.825GHz  
 回波损耗Return loss: -9.5dB or less  
 驻波比VSWR: 2.0 max  
 增益Gain (peak): 5dBi

9	foam	1	EVA,Black
8	Wire rod	1	RG178 Black
7	rivet	2	POM; Black
6	spring	1	Brass
5	Pole sleeve	1	PP; Black
4	POB	1	FR-4
3	Upper fixing	1	PC+ABS; Black
2	Seat fixing seat	1	PC+PBT; Black
1	SMA	1	SMA PLUG -PIN (F); Brass Nickel age

尺寸范围 (mm)	公差 (mm)
0 < L ≤ 6	±0.10
6 < L ≤ 30	±0.10
30 < L ≤ 90	±0.15
90 < L ≤ 180	±0.20
180 < L ≤ 315	±0.25
315 < L ≤ 800	±0.35

角度	公差
±0.5°	

NO.	DESCRIPTION	QTY	REMARK
6			
5			
4			
3			
2			
1			

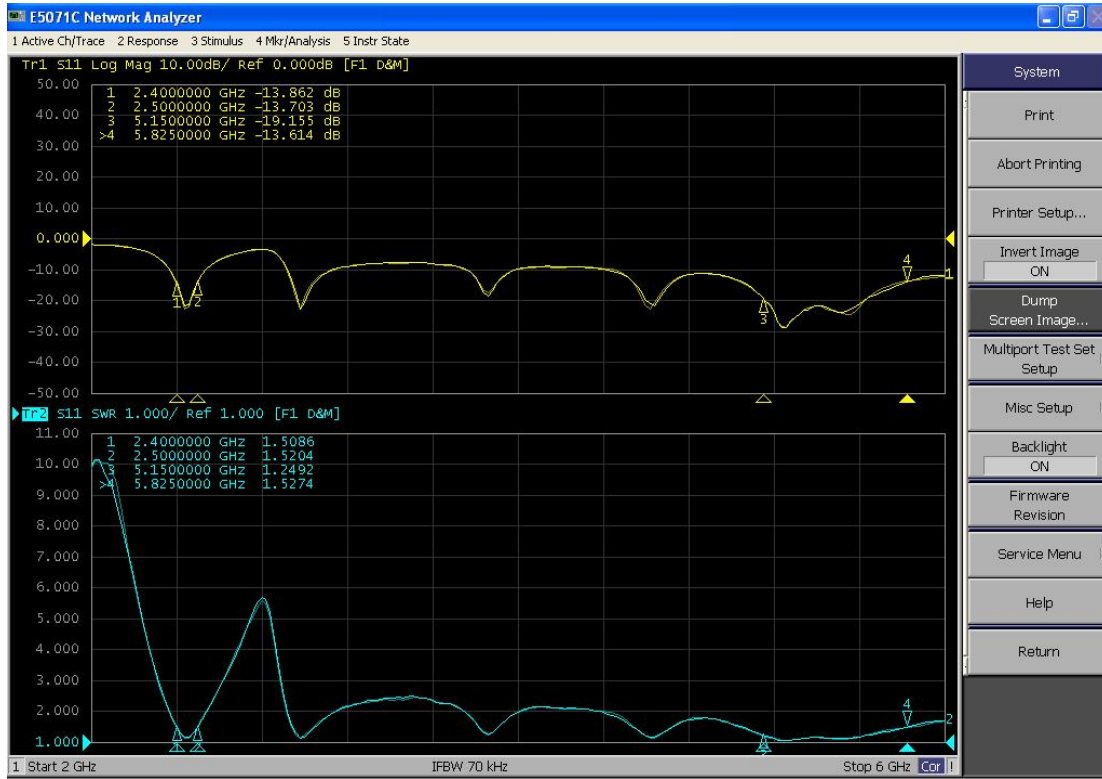
APPROVED	CHECKED	DRAWING

CUSTOMER:	PART NO.:	PARTNAME:
		RF Antenna Assembly
		R.F P/NO : U00T01S010N03637
		REV UNIT SCALE SIZE SHEET
		A mm 1:1 A4 10F1

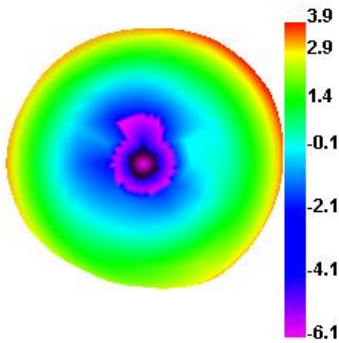
**RF link**

RenFeng Electronic technology  
 Co., LTD.

## 6.1 Testing report

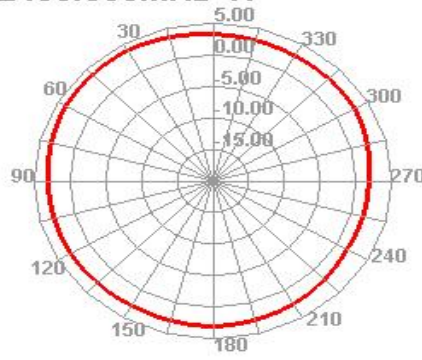


2450.000MHz

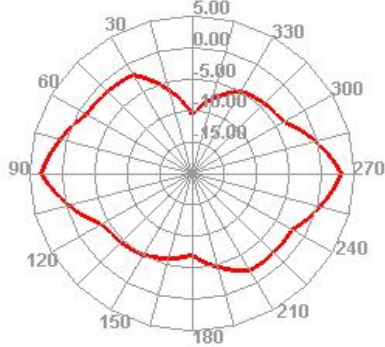


2.4G  
2400MHz

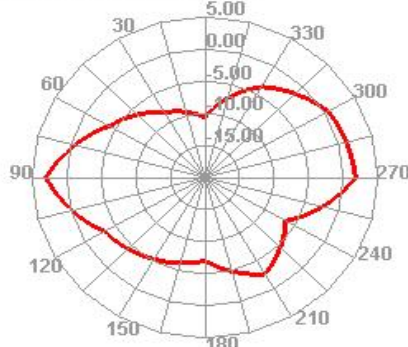
2450.000MHz H



2450.000MHz E1

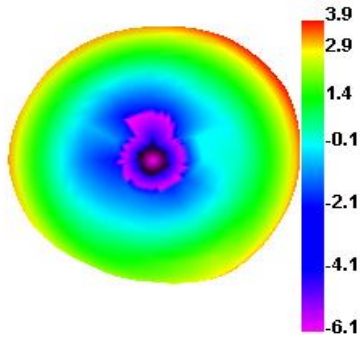


2450.000MHz E2

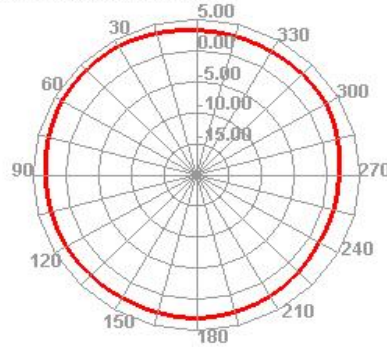




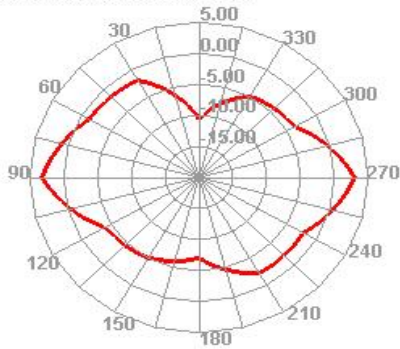
2450.000MHz



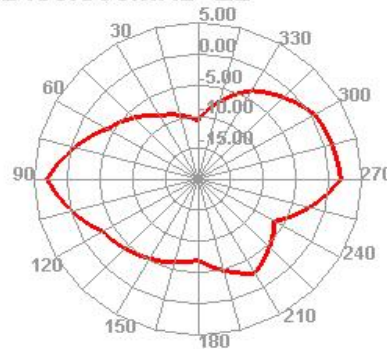
2450.000MHz H



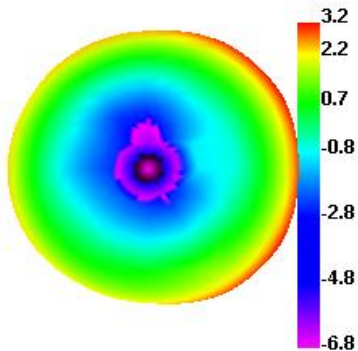
2450.000MHz E1



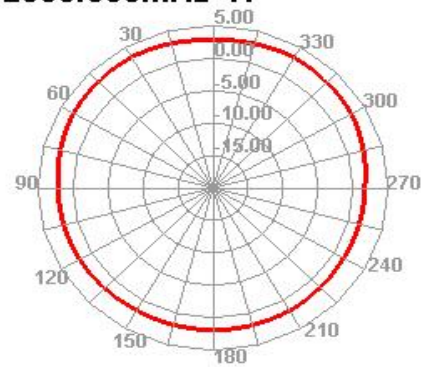
2450.000MHz E2



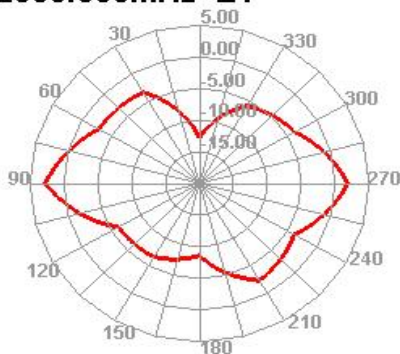
2500.000MHz



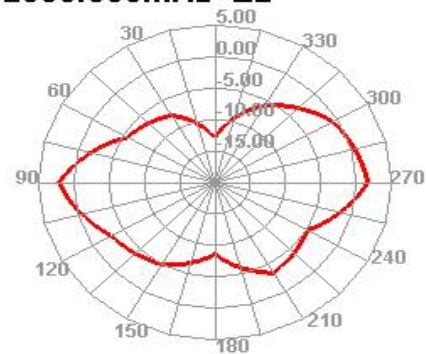
2500.000MHz H



2500.000MHz E1

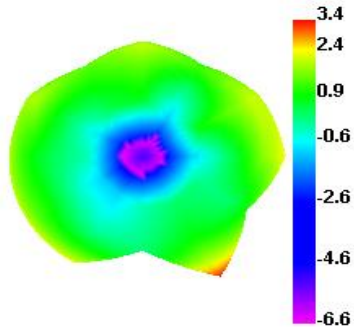


2500.000MHz E2

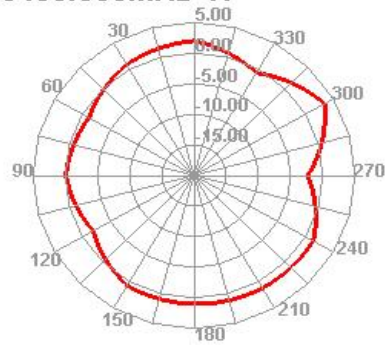


5G  
5500MHz

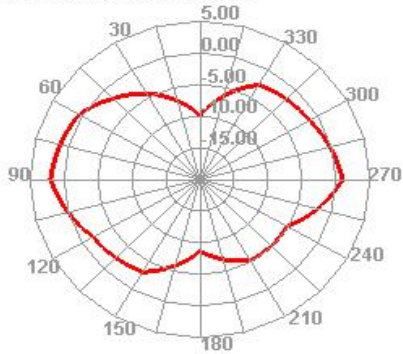
**5400.000MHz**



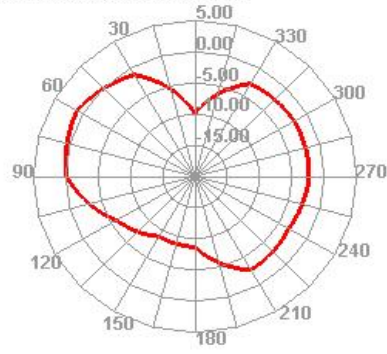
**5400.000MHz H**



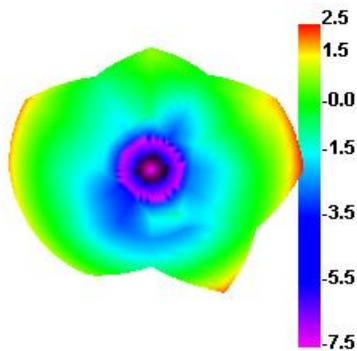
**5400.000MHz E1**



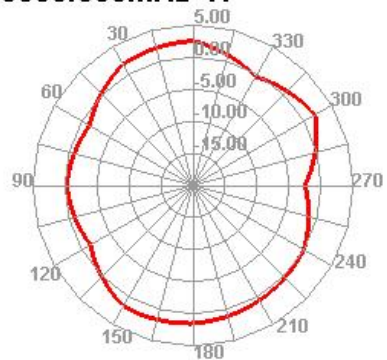
**5400.000MHz E2**



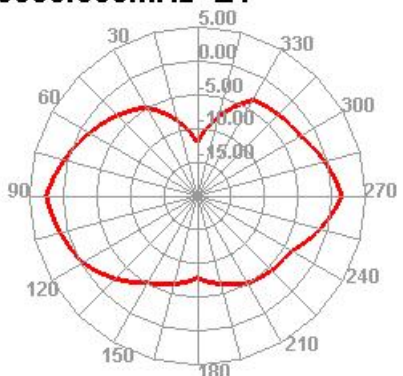
**5500.000MHz**



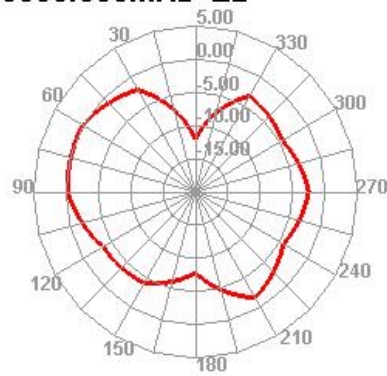
**5500.000MHz H**



**5500.000MHz E1**

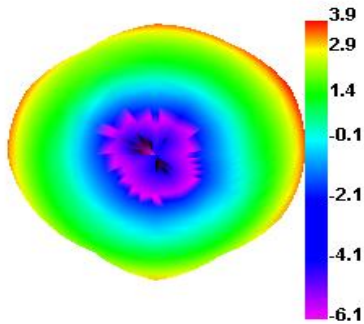


**5500.000MHz E2**

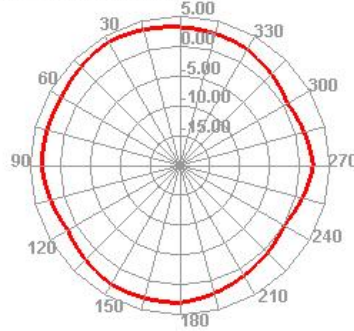




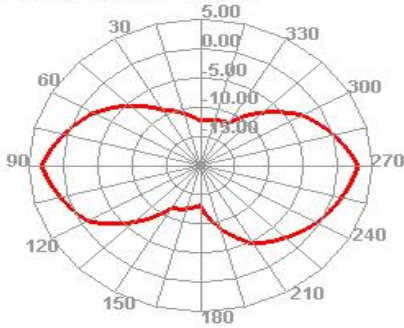
**5850.000MHz**



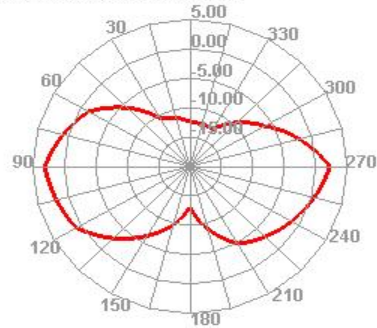
**5850.000MHz H**



**5850.000MHz E1**



**5850.000MHz E2**



Frequency (MHz)	ANT	
	Efficiency (%)	Peak Gain (dBi)
2400	77.21	3.43
2450	79.21	3.95
2500	82.33	3.24
5150	82.65	3.46
5500	83.15	4.27
5850	77.52	3.93